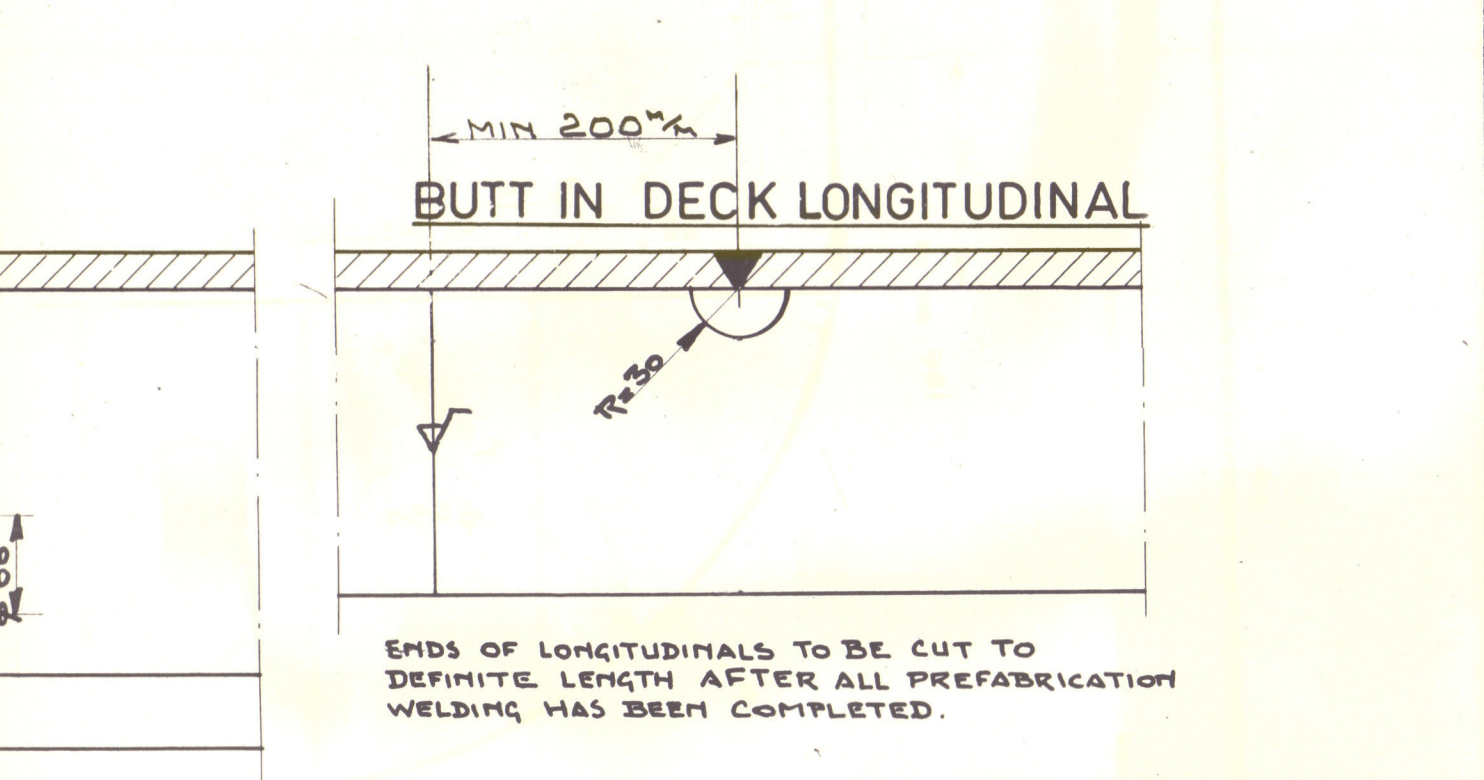


WUZ.	OMSCHRIJVING	DATUM	PAR.
A	AS SUBMITTED TO LLOYD'S	14-9-55	10.
B	LONGITUDINALS, STRENGTHDECK.	16-9-55	10.
C	HATCHWAYS, SHELL, ENGINEERING, STRENGTHDECK	21-9-55	10.
D	BEAMKNEE, BOATDECK.	7-10-55	10.
E	AS SUBMITTED TO LLOYD'S	1-12-55	10.
F	HATCH BEAMS AND COVERS	11-1-56	10.
G	AS CONSTRUCTED FOR 281.	21-9-57	10.



**CLASS: LLOYDS 100 A 1.**

WITH THE SPECIAL NOTATION: LONGITUDINAL FRAMING AT BOTTOM AND AT UPPER DECK. IN ACCORDANCE WITH SECTION 3.4 L.R. (RECOMMENDATIONS ADDITIONAL STRENGTHENING FOR HEAVY CARGOES.) NO HEAVY CARGOES IN DEERTANKS.

**LENGTH B.P.** 142,68 m. = 468'-1 1/2"

**MOULDED BREADTH** 20,00 m. = 65'-7 1/2"

**DEPTH** 12,50 m. = 41'-0 1/8"

**DRAUGHT** 9,30 m. = 30'-6 3/4"

DISPLACEMENT 19438 TONS.

C.B. = 0,72

SERVICE SPEED 15 KNOTS.

WEIGHT OF MACHINERY 700 TONS.

RATIO d/D = 0,744.

**EQUIPMENT**

NUMERAL (ENGLISH) 51130 07

3 BOWER ANCHORS, EACH 4155 kg.

CHAINS, SPECIAL STEEL, 57 mm. AT OTHERS REQ. 60 mm, LENGTH 550 m.

TOWLINE 220 m. 6x24, 44 1/2 CIRC. 5 1/2"

ACTUAL BREAKING STRENGTH 22 TONS

MOORING ROPES 1500 m. 6x12, 22 CIRC. 3 1/4"

ACTUAL BREAKING STRENGTH 21 TONS

**REMAIN**

**P 403**

THE PARTS MARKED WITH AN APOSTROPH ARE TO BE OF STEEL WHICH HAS BEEN SPECIALLY APPROVED UNDER PAR. P 403, FOR 44 ANCHORS.

**FRAME SPACING**

0 - 10	600 mm
10 - 152	760 mm
152 - 183	680 mm
183 - FORW.	600 mm

**APPROVED BY LLOYD'S REGISTER. SEE LETTER OF 22-11-55.**

**N.V. KON. MIJ. „DE SCHELDE“ VLISSINGEN**

AFDELING: SCHEEPSBOUWTEKENKAMER

BESTEMMING: LLOYD'S REG.

**PLAN AS BUILT MIDSHIP-SECTION.**

SCHAAL: 1:25

STUK: BL

GET. 9

GEZ.

CONTR.

VERZ. DAT. 1 JULI 1958

OPDRACHT: 00291-300

HOOFD: TEK. No. 002

AFDELING: A B C D

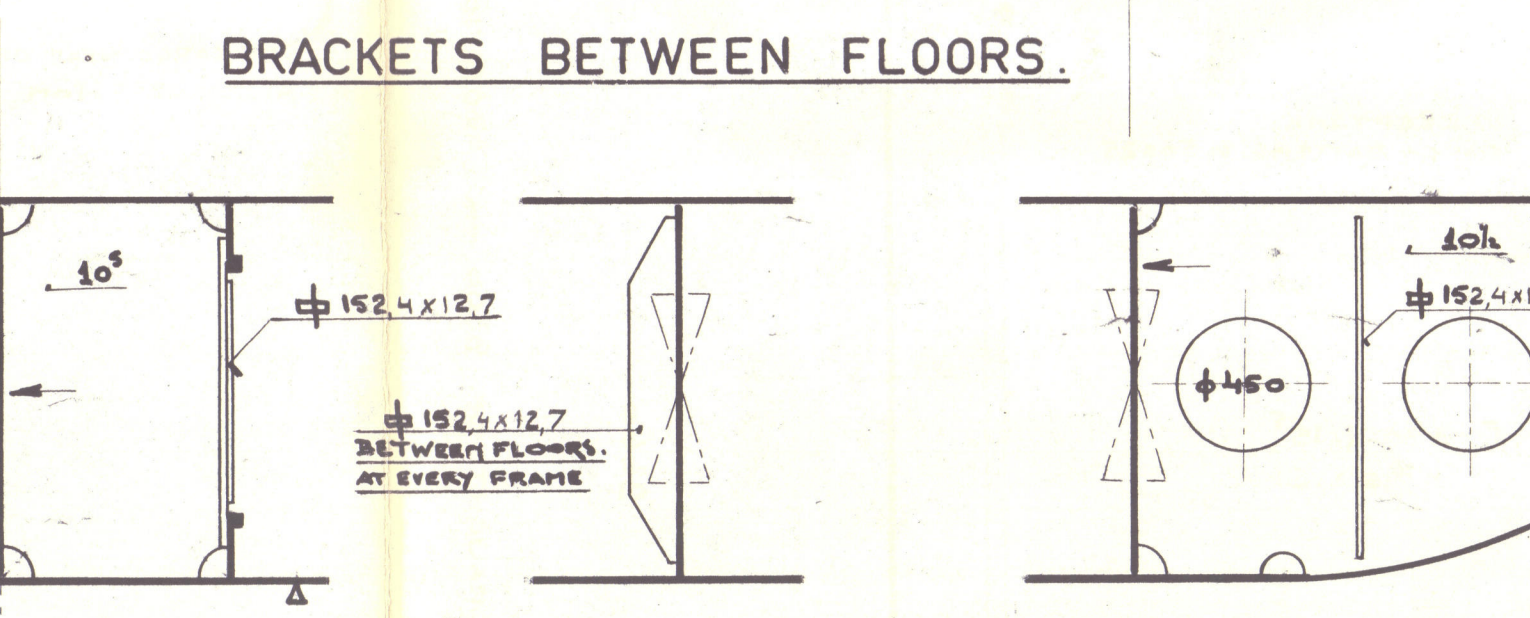
OPDRACHT: 00291-300

HOOFD: TEK. No. 002

AFDELING: A B C D

HATCHWAYS	HATCH N°1	N°2	N°3	N°4	N°5
SPACING "M"	1245	1300	1381	1302	1244
DECKHEIGHT "M"	5130	4275	3765	3240	3240
MODULUS (MIN) CM <sup>4</sup>	4520	3850	3360	3780	2840
BRITISH STANDARD	600x250x15/28	530x250x15/28	530x250x15/28	530x250x15/28	530x250x15/28
WELDED BEAM T THICKNESS HATCH COVERS IN "M"	85	78	73	67	67

FROM FR. 48 TO FR. 67 DISTANCE OF STIFFENERS AND BEAMS 380 "M"



**TANKTOP**

IN HOLDS

APIDSHIPS AT ENDS

IN DEERTANK

IN ENGINE ROOM

16 (11 1/2) mm

16 (10 1/2) mm

1380 x 13 1/2

1580 x 13 1/2

43

43

**LONGITUDINALS:**

FRS. 43-152

FLOORS AT EVERY

2<sup>ND</sup> FRAME

3<sup>RD</sup> FRAME

4<sup>TH</sup> FRAME

5<sup>TH</sup> FRAME

6<sup>TH</sup> FRAME

7<sup>TH</sup> FRAME

8<sup>TH</sup> FRAME

9<sup>TH</sup> FRAME

10<sup>TH</sup> FRAME

11<sup>TH</sup> FRAME

12<sup>TH</sup> FRAME

13<sup>TH</sup> FRAME

14<sup>TH</sup> FRAME

15<sup>TH</sup> FRAME

16<sup>TH</sup> FRAME

17<sup>TH</sup> FRAME

18<sup>TH</sup> FRAME

19<sup>TH</sup> FRAME

20<sup>TH</sup> FRAME

21<sup>TH</sup> FRAME

22<sup>TH</sup> FRAME

23<sup>TH</sup> FRAME

24<sup>TH</sup> FRAME

25<sup>TH</sup> FRAME

26<sup>TH</sup> FRAME

27<sup>TH</sup> FRAME

28<sup>TH</sup> FRAME

29<sup>TH</sup> FRAME

30<sup>TH</sup> FRAME

31<sup>TH</sup> FRAME

32<sup>TH</sup> FRAME

33<sup>TH</sup> FRAME

34<sup>TH</sup> FRAME

35<sup>TH</sup> FRAME

36<sup>TH</sup> FRAME

37<sup>TH</sup> FRAME

38<sup>TH</sup> FRAME

39<sup>TH</sup> FRAME

40<sup>TH</sup> FRAME

41<sup>TH</sup> FRAME

42<sup>TH</sup> FRAME

43<sup>TH</sup> FRAME

44<sup>TH</sup> FRAME

45<sup>TH</sup> FRAME

46<sup>TH</sup> FRAME

47<sup>TH</sup> FRAME

48<sup>TH</sup> FRAME

49<sup>TH</sup> FRAME

50<sup>TH</sup> FRAME

51<sup>TH</sup> FRAME

52<sup>TH</sup> FRAME

53<sup>TH</sup> FRAME

54<sup>TH</sup> FRAME

55<sup>TH</sup> FRAME

56<sup>TH</sup> FRAME

57<sup>TH</sup> FRAME

58<sup>TH</sup> FRAME

59<sup>TH</sup> FRAME

60<sup>TH</sup> FRAME

61<sup>TH</sup> FRAME

62<sup>TH</sup> FRAME

63<sup>TH</sup> FRAME

64<sup>TH</sup> FRAME

65<sup>TH</sup> FRAME

66<sup>TH</sup> FRAME

67<sup>TH</sup> FRAME

68<sup>TH</sup> FRAME

69<sup>TH</sup> FRAME

70<sup>TH</sup> FRAME

71<sup>TH</sup> FRAME

72<sup>TH</sup> FRAME

73<sup>TH</sup> FRAME

74<sup>TH</sup> FRAME

75<sup>TH</sup> FRAME

76<sup>TH</sup> FRAME

77<sup>TH</sup> FRAME

78<sup>TH</sup> FRAME

79<sup>TH</sup> FRAME

80<sup>TH</sup> FRAME

81<sup>TH</sup> FRAME

82<sup>TH</sup> FRAME

83<sup>TH</sup> FRAME

84<sup>TH</sup> FRAME

85<sup>TH</sup> FRAME

86<sup>TH</sup> FRAME

87<sup>TH</sup> FRAME

88<sup>TH</sup> FRAME

89<sup>TH</sup> FRAME

90<sup>TH</sup> FRAME

91<sup>TH</sup> FRAME

92<sup>TH</sup> FRAME

93<sup>TH</sup> FRAME

94<sup>TH</sup> FRAME

95<sup>TH</sup> FRAME

96<sup>TH</sup> FRAME

97<sup>TH</sup> FRAME

98<sup>TH</sup> FRAME

99<sup>TH</sup> FRAME

100<sup>TH</sup> FRAME

