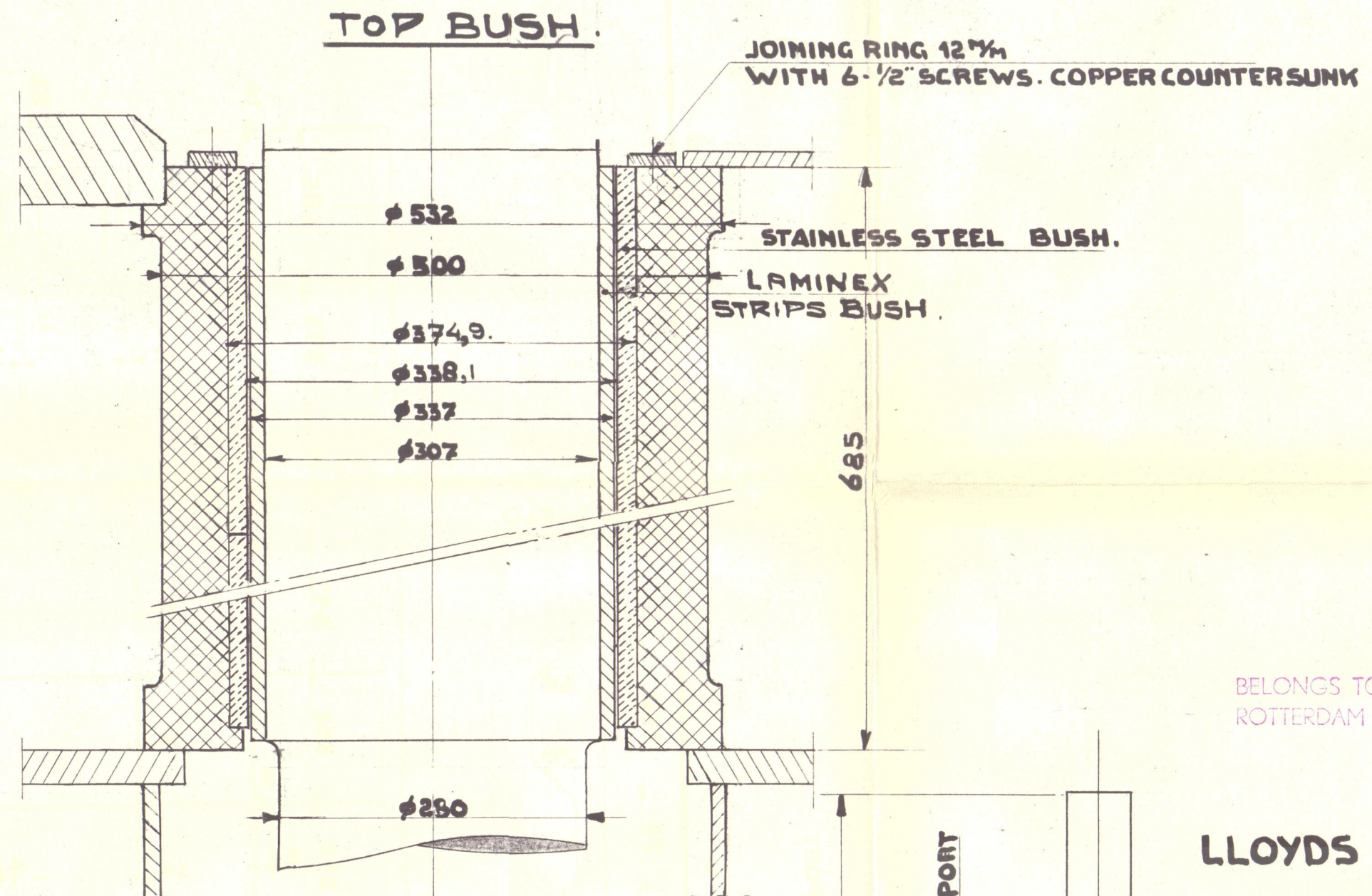
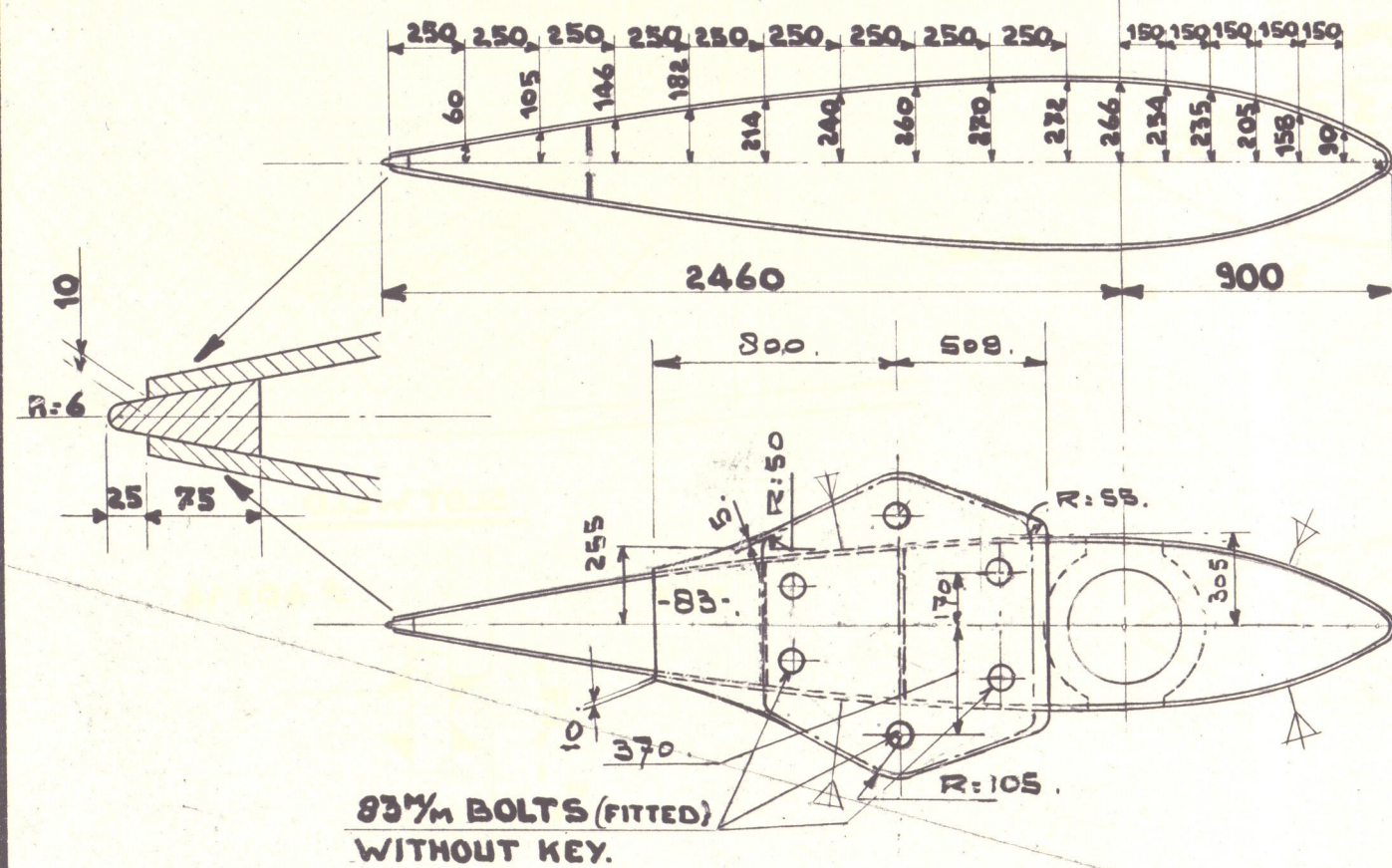
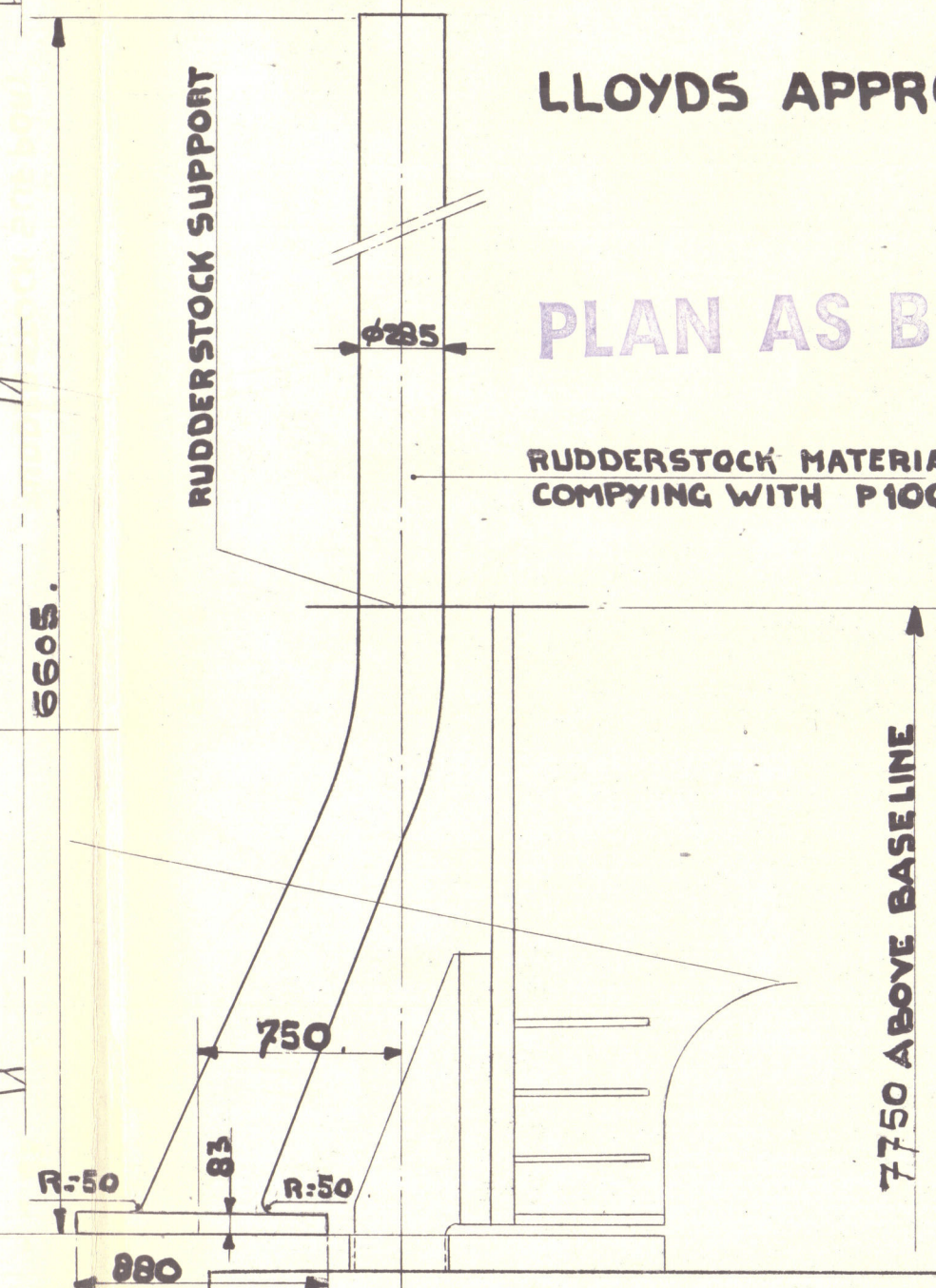
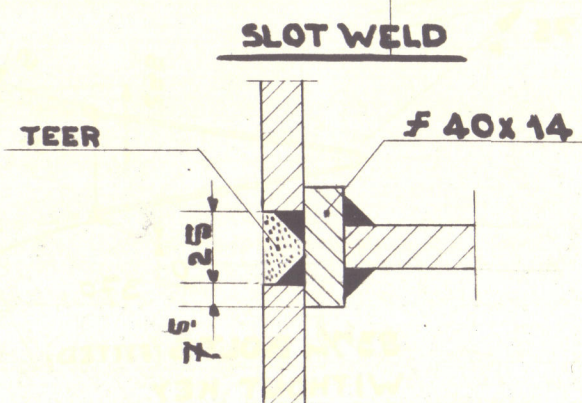
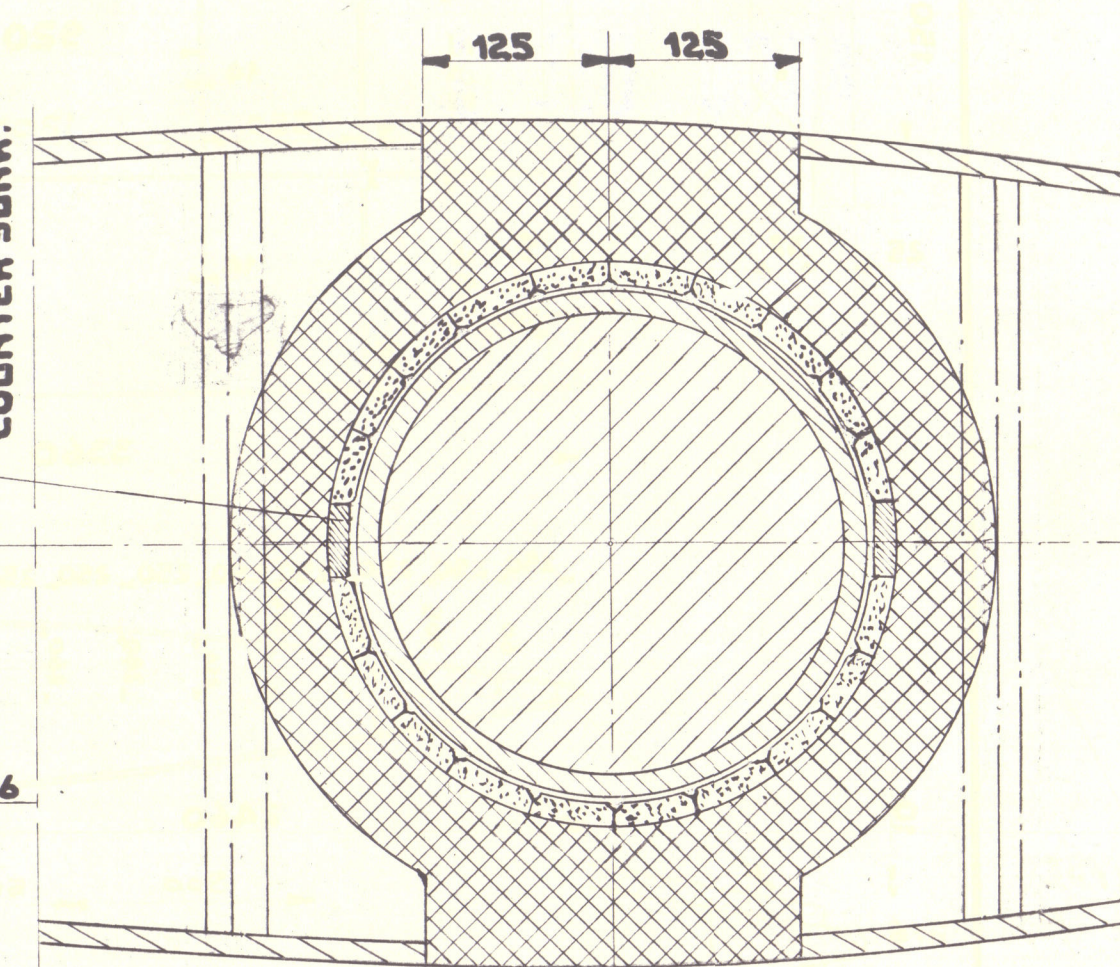


S.B. WELD.



**STAINLESS STRIP
WITH 5-3/4" SCREWS,
COUNTER SUNK.**



PLAN AS BUILT

RUDDERSTOCK MATERIAL COMPLYING WITH P1009

7750 ABOVE BASELINE

[illegible]

RUDDER HEAD

$$A = 182 \text{ Ft}^2$$
$$D = 2,56 \text{ Ft}$$
$$A \times D = 466 \rightarrow \phi = 283,4\%$$

SPEED 16 KNOTS.

BELONGS TO
ROTTERDAM REPORT No. 40244

LLOYDS APPROVAL DATED: 16-3-'56

[illegible]

N.V. KON. MIJ. „DE SCHELDE” VLISSINGEN

AFDELING:		BESTEMMING:	
SCHEEPSBOUW		LLOYD'S REG.	
SCHAAL: 1:25 1:5	BENAMING: RUDDER AND RUDDERSTOCK		
GET.: J.T.	CONTR.:	VERZ. DATUM: 30 JULI 1958	OPDRACHT: 00291/300
GEZ.:	STUKL. BL.	AANT. BL. 12	BLAD No. 12
		HOOFD: TEK. No. 010	

B 003147-003153-0127

u **ARGO DELOS** u

RECORDS DEPT.,
LONDON.

6

Rudder & Radderstock

(as Built)

003147-003153-0127



© 2020

Lloyd's Register
Foundation