

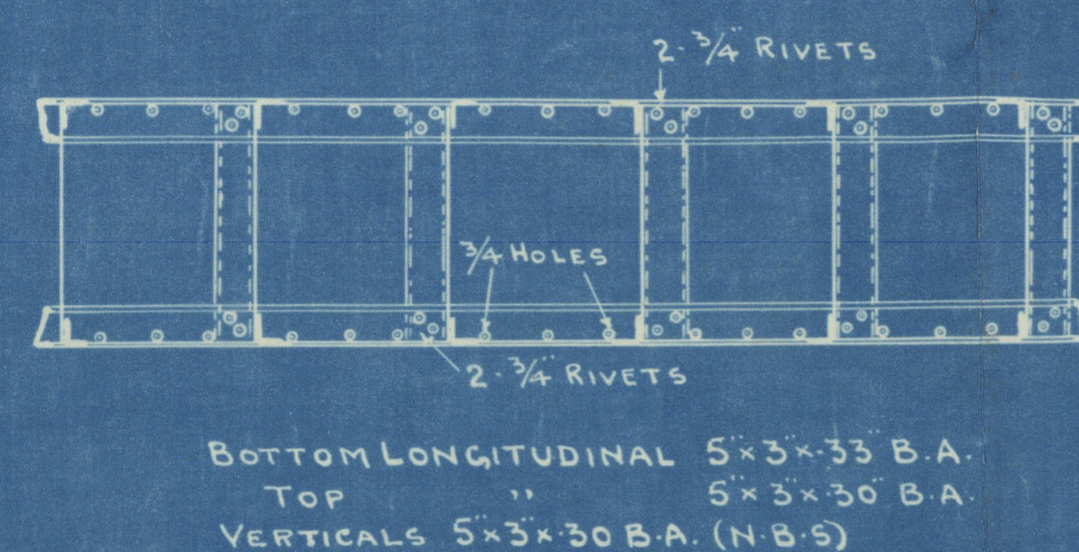
No 346 - S.S. ELEANOR BROOKE **No 347 - S.S. ELIZABETH LYSACHT** **No 348 - S.S. SYLVIA BEALE.**

GENERAL PARTICULARS		EQUIPMENT	
LENGTH ON L.W.L.	"L" 209'00"	Lx (B+D)	10309'47"
BREADTH MOULDED	"B" 34'00"	RQ DECK	119'51x3'75"
DEPTH	"D" 15'33"	BRIDGE	11'33x7'00x7'5"
1 st LONG. NUMBER	(L x D.) 3203'37"	FORECASTLE	19'09x7'00x7'5"
2 nd " "	L x (B+D) 10309'37"	CASINGS	4-25x7'00x50"
PROPORTIONS 1/2 D. UPPER DECK	10309'37"	DECKHOUSE	12'00x7'00x50"
FRAMING DEPTH 1/2 D. TO UPPER DECK	7'72"	EQUIPMENT No	11108'30"
SHEER AT 1/2 L. FOR 1/2 D. DECK	11'47"		
" " COLLISION BHP 3'6" d	9'06"		
" " COLLISION BHP 3'6" d	11'25"		
STERN FRAME AS SUBMITTED		2 BOWER ANCHORS, 2 3/4 CENTS STOCKLESS.	
STEM BAR 6 3/4 x 1 1/2		1 " ANCHOR, 20 1/4 " EX. STOCK.	
REITH'S PATENT HATCH COAMINGS.		210 FATHOMS 1 1/2" STUD CHAIN CABLE.	
		* 60 " 3/2" STEEL WIRE ROPE IN LIEU OF STREAM CHAIN.	
		* 1 @ 30 " 3/4" STEEL WIRE ROPE TOWLINE	
		* 1 @ 30 " 2 1/2 " " " HAWSER	
		* 1 @ 30 " 1 1/2 " " " WARPS	
		* 6x12 FLEXIBLE	

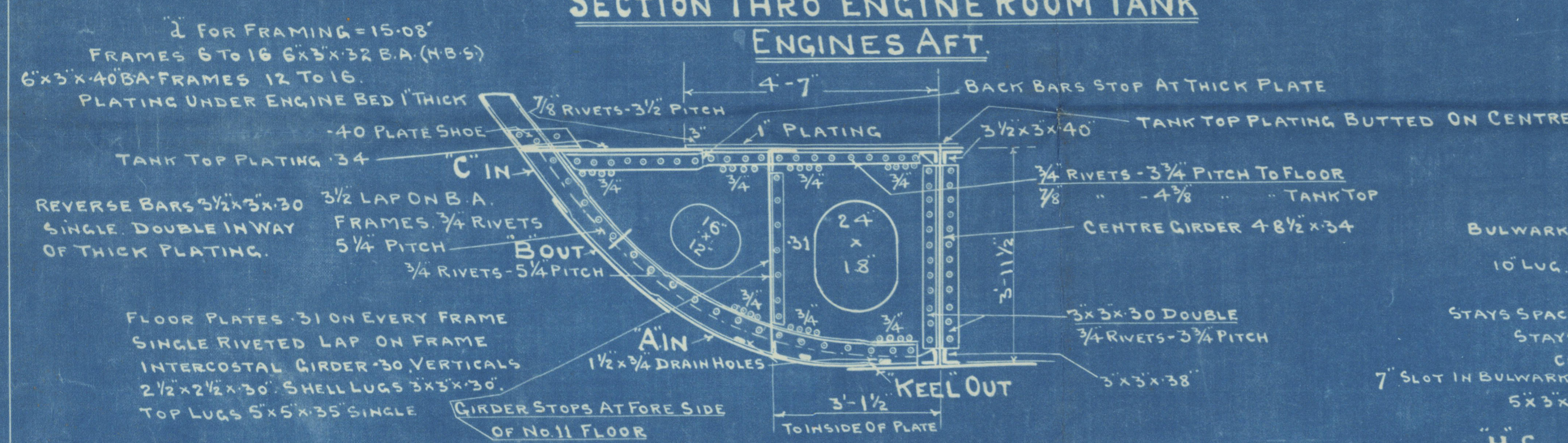
B. P. AUSTIN & SONS, LTD.
 SHIPBUILDERS & ENGINEERS
 11, 13 & 15, QUEEN'S ROAD,
 SUNDERLAND.
 Date June 20th 1928.
 Reference No. 205/246-7-5.

Scale 1/2 = 1 Foot.

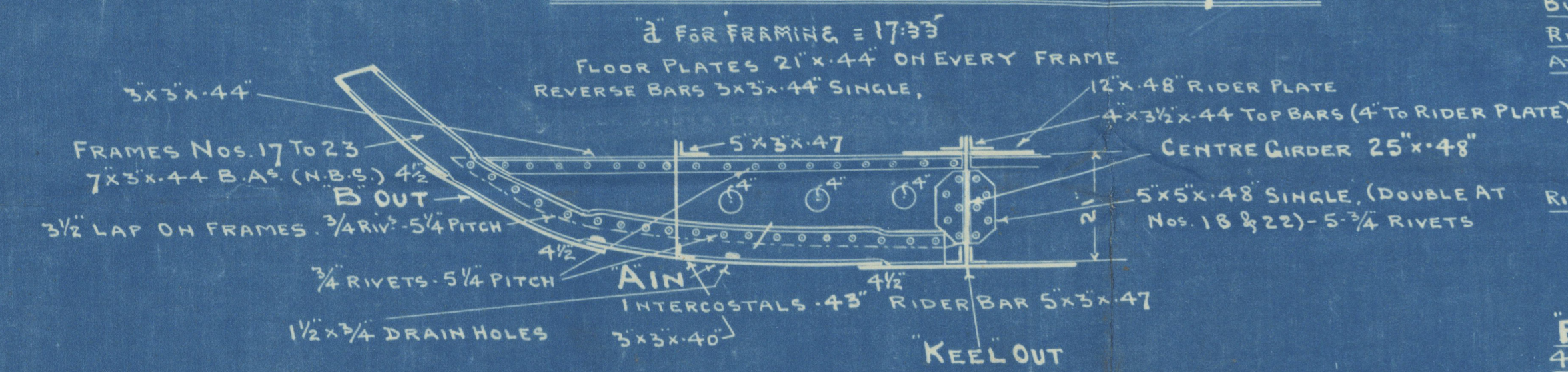
LONGITUDINAL GIRDER IN DOUBLE BOTTOM.



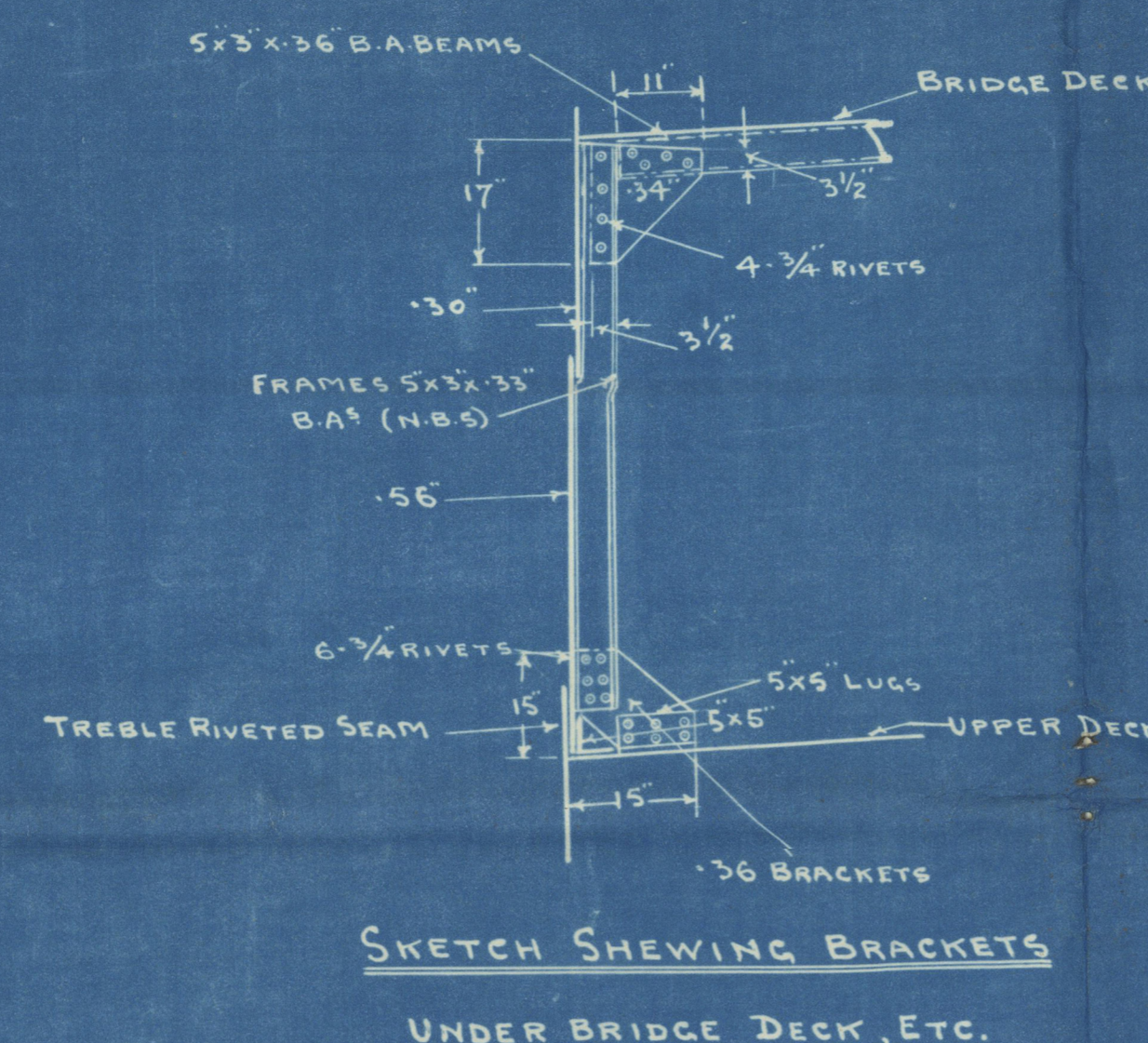
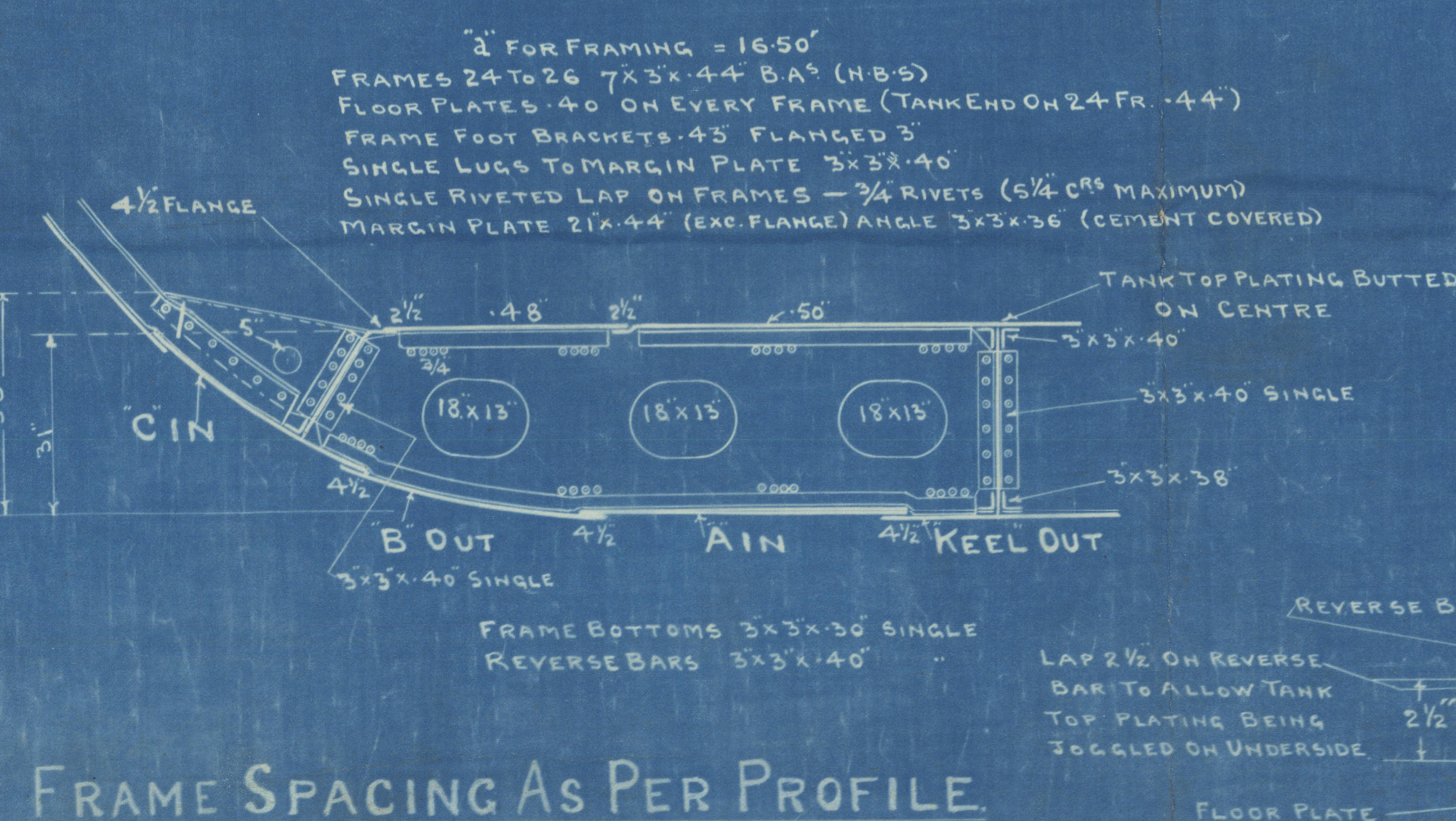
SECTION THRO' ENGINE ROOM TANK ENGINES AFT.



SECTION THRO' BOILER ROOM (17 TO 23)



SECTION THRO' BOILER ROOM TANK (24 TO 27)

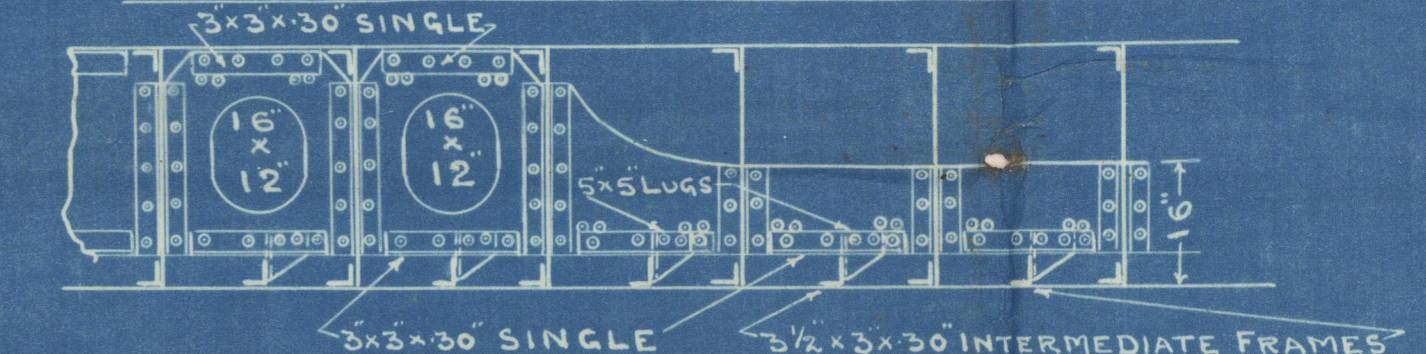


SKETCH SHOWING BRACKETS
UNDER BRIDGE DECK, ETC.

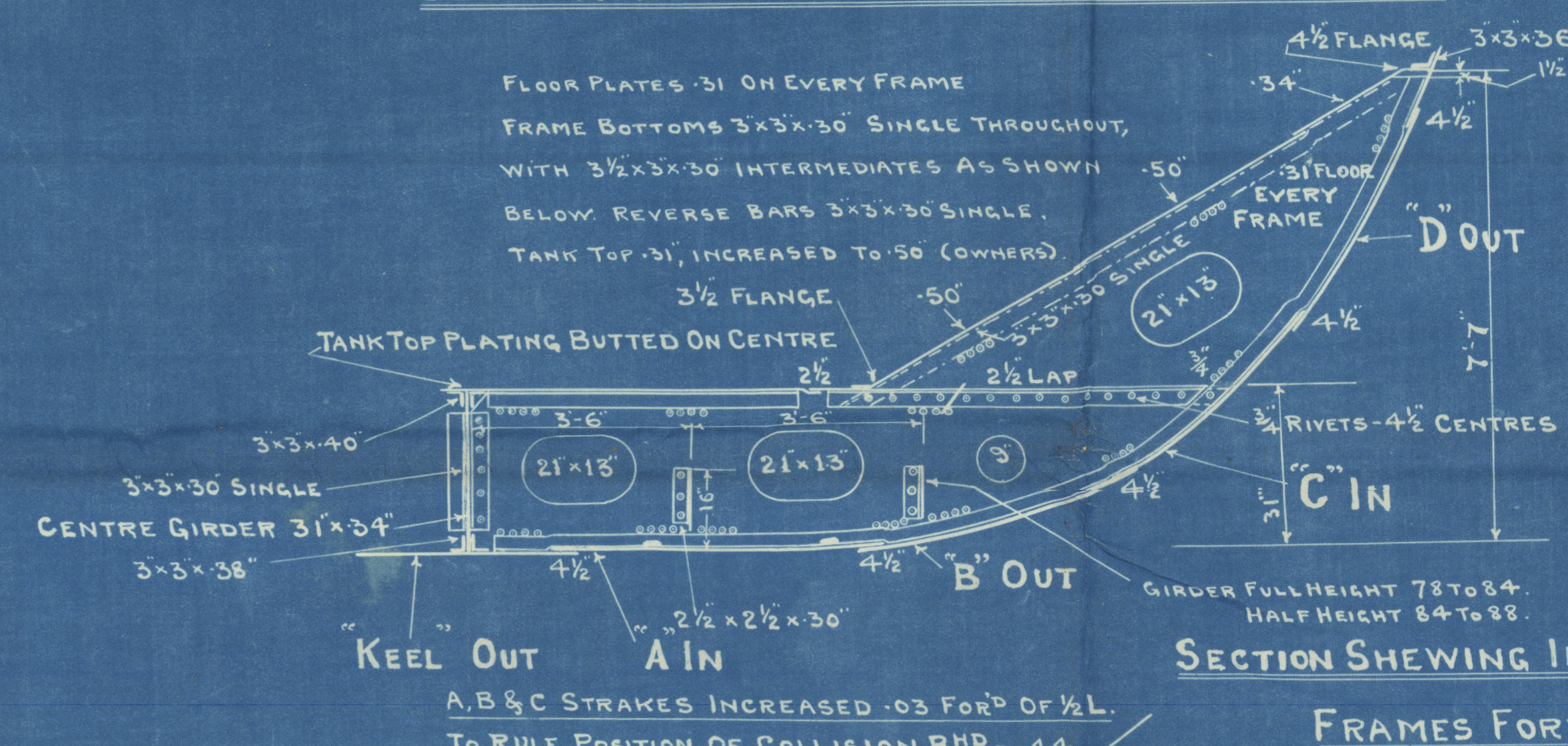
SKETCH OF INTERCOSTAL GIRDER

INTERCOSTAL PLATES .28 VERTICALS 2 1/2 x 2 x 30

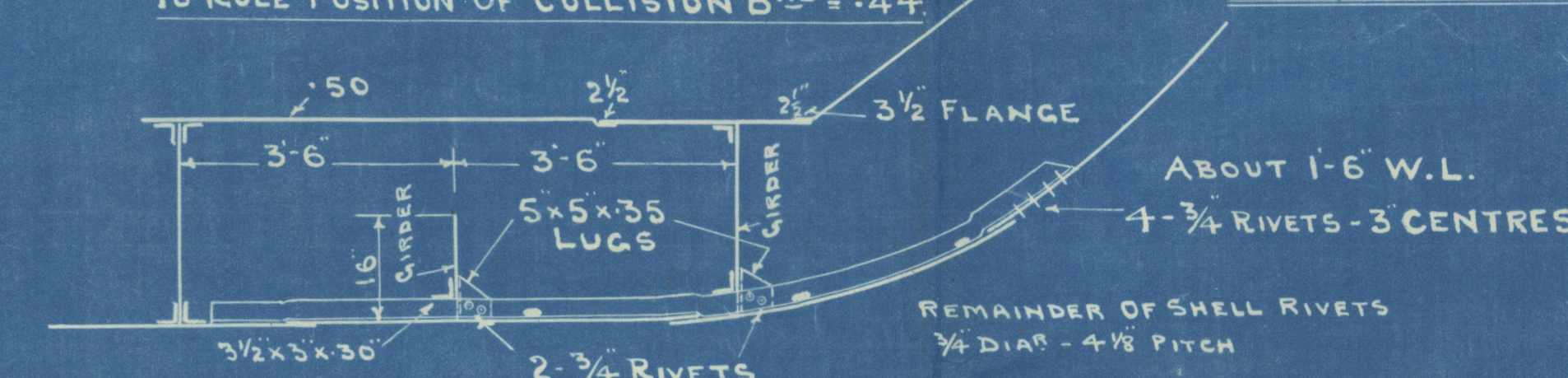
INTERCOSTAL GIRDERS FORWARD OF 1/2 L FORWARD.



SECTION THRO' TANK FORWARD OF 1/2 LENGTH FORD



SECTION SHOWING INTERMEDIATE FRAMES FORWARD



INTERMEDIATE FRAMES 3 1/2 x 3 x 30.
 FRAMES 96 TO 99 DOUBLED TO RULE
 EXTENT OF GIRDERS AS PER PROFILE & TO LOCAL SURVEYORS SATISFACTION

FRAMES TO RAISED QUARTER DECK
 AFTER PEAK STERN TO 4' 5'3" x 33" B.A. (N.B.S) 22 1/2" SPACING
 ENGINE ROOM 6' TO 16' 5'3" x 30" B.A. (N.B.S) 24" SPACING
 BOILER ROOM 17' TO 23' 5'3" x 30" B.A. (N.B.S) 24" SPACING
 CROSS BUNKER 27' TO 29' 5'3" x 30" B.A. (N.B.S) 24" SPACING
 AFTER HOLD 30' TO 50' 5'3" x 30" B.A. (N.B.S) 24" SPACING
 51' BULB ANGLES AT CANTILEVERS

DOUBLE BOTTOM IN HOLDS & CROSS BUNKER

CENTRE GIRDER 3'1" x 38" FOR 1/2 LENGTH TO 34' AT ENDS, BUTTS OVERLAPPED & DOUBLE RIVETED.
 KEEL ANGLES 3'3" x 38" FOR 1/2 L. TO 38' AT ENDS, DOUBLE, TOP ANGLES 3'3" x 40" DOUBLE.
 VERTICAL CONNECTIONS 5'3" x 30" SINGLE THROUGHOUT HOLDS.
 FLOOR PLATES 3'1" ON EVERY FRAME, TANK END FLOORS .38", NO VERTICAL STIFFENERS.
 FRAME BOTTOMS 5'3" x 30" SINGLE THROUGHOUT, REVERSE BARS 5'3" x 30" SINGLE THROUGHOUT.
 INTERCOSTAL GIRDERS AS SHOWN ON DETAIL SKETCH ABOVE, STRENGTHENING FORWARD AS PER SEPARATE SKETCHES.

INNER BOTTOM

BUTTS OF TANK TOP STRAPPED SINGLE STRAPS ON UNDERSIDE 3 1/4" x 50" FOR 1/2 L. TO 5 1/4" x 50" AT ENDS.
 MARGIN PLATE 3'4", BUTTS OVERLAPPED & DOUBLE RIVETED THROUGHOUT, MARGIN ANGLE 3'3" x 36".
 MIDDLE LINE STRAKE 4'1" x 34" FOR 1/2 L. TO 32' AT ENDS, INCREASED TO 50" THROUGHOUT.
 TANK TOP PLATING .31" THROUGHOUT.
 BUTTS OF MIDDLE LINE STRAKE STRAPPED ON UNDERSIDE SINGLE STRAPS 3 1/4" x 50" THROUGHOUT, 2 R¹ TANK TOP PLATING BUTTED ON CENTRE.

D STRAKE (OUT)
 6'1" x 40" AND .36 AFT.
 BUTTS OVERLAPPED & TREBLE RIVETED FOR 1/2 L. TO DOUBLE AT ENDS.

E STRAKE (IN & OUT)
 6'1" x 40" FOR 1/2 LENGTH AMIDSHIPS TO 36' AT AFTER END. BUTTS OVERLAPPED AND DOUBLE RIVETED.

F STRAKE (IN)
 4'5" x 40" FOR 1/2 LENGTH TO 36' AFT.

G STRAKE (OUT)
 4'5" x 40" FOR 1/2 LENGTH TO 40' AT FORE END. BUTTS OVERLAPPED & TREBLE RIVETED TO DOUBLE AT END.

H STRAKE (IN & OUT)
 4'7" x 45" FOR 1/2 L. TO 36' AFT. BUTTS OVERLAPPED & TREBLE RIVETED FOR 1/2 L. TO DOUBLE AT ENDS.

C STRAKE (IN)
 6'2" x 41" FOR 1/2 LENGTH AMIDSHIPS & .38 AFT. BUTTS OVERLAPPED & TREBLE RIVETED TO DOUBLE AFT.

B STRAKE (OUT)
 6'1" x 41" FOR 1/2 LENGTH AMIDSHIPS & .38 AFT. BUTTS OVERLAPPED & TREBLE RIVETED TO DOUBLE AFT.

A STRAKE (IN)
 6'2" x 41" FOR 1/2 L. TO 45' AT ENDS. BUTTS OVERLAPPED & TREBLE RIVETED TO DOUBLE AFT.

KEEL (OUT)
 4'0" x 49" FOR 3/4 L. TO 45' AT ENDS. BUTTS OVERLAPPED & TREBLE RIVETED THROUGHOUT.

A STRAKE (IN)
 6'2" x 41" FOR 1/2 L. TO 35' FORWARD. INCREASED TO 44" FORWARD OF 1/2 L. FORWARD TO RULE POSITION OF COLLISION BULKHEAD.

B STRAKE (OUT)
 6'1" x 41" FOR 1/2 L. TO 35' FORWARD. INCREASED TO 44" FORWARD OF 1/2 L. FORWARD TO RULE POSITION OF COLLISION BULKHEAD.

C STRAKE (IN)
 6'2" x 41" FOR 1/2 L. TO 35' FORWARD. INCREASED TO 44" FORWARD OF 1/2 L. FORWARD TO RULE POSITION OF COLLISION BULKHEAD.

FRAME SPACING AS PER PROFILE.

ENLARGED SKETCH SHOWING
 SIZE OF LAP OF FLOOR PLATE
 ON REVERSE BAR.

S/s SYLVIA BEALE

Messrs. S.P. Austin & Son's Yard No. 348

Midship Section (As built plan)

SENDING NO. 348. No. 3408

RETAIN

Lloyd's Register
Foundation

003162-003174-0154