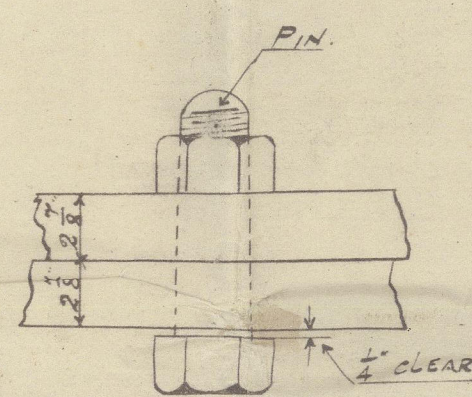
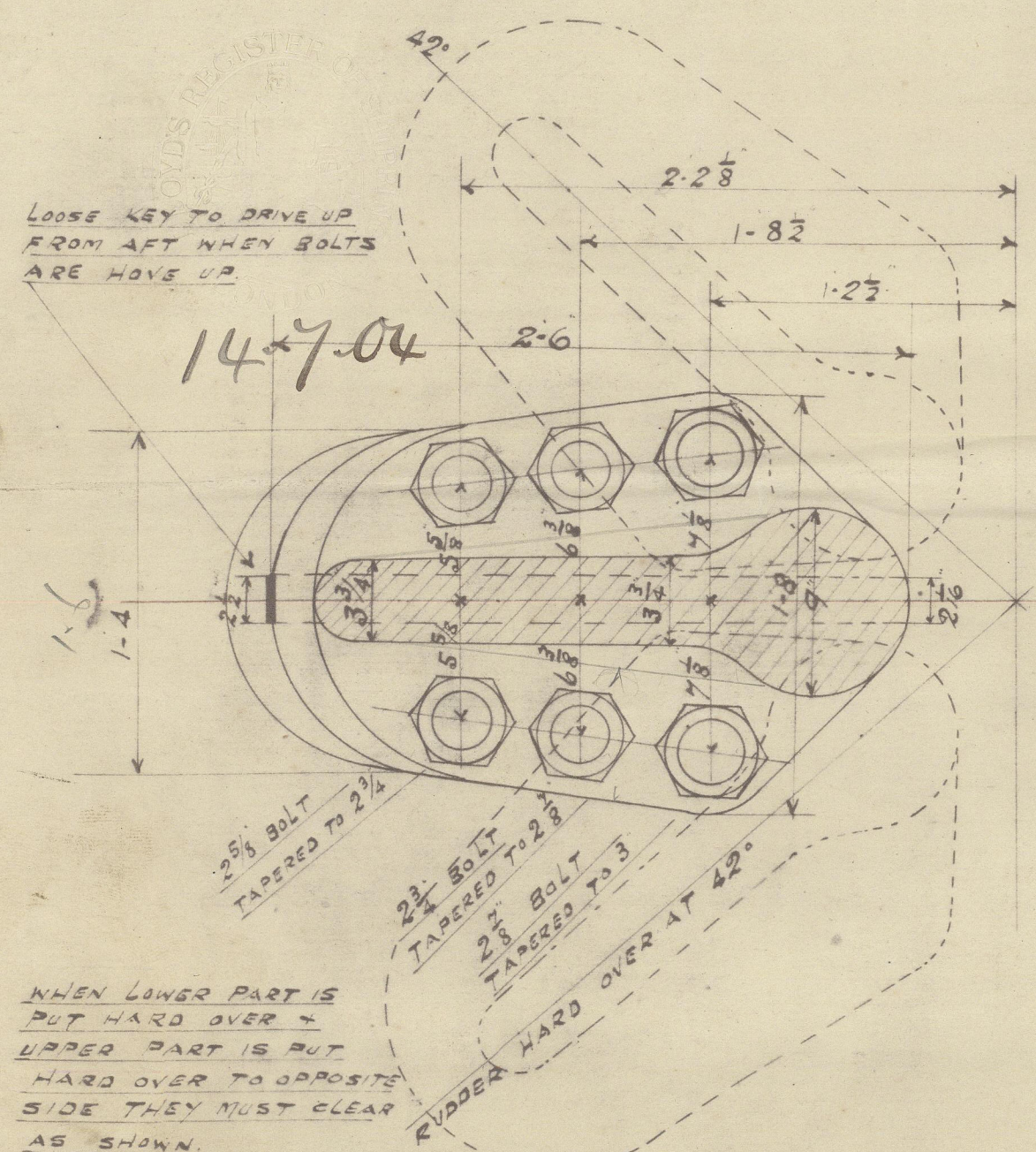

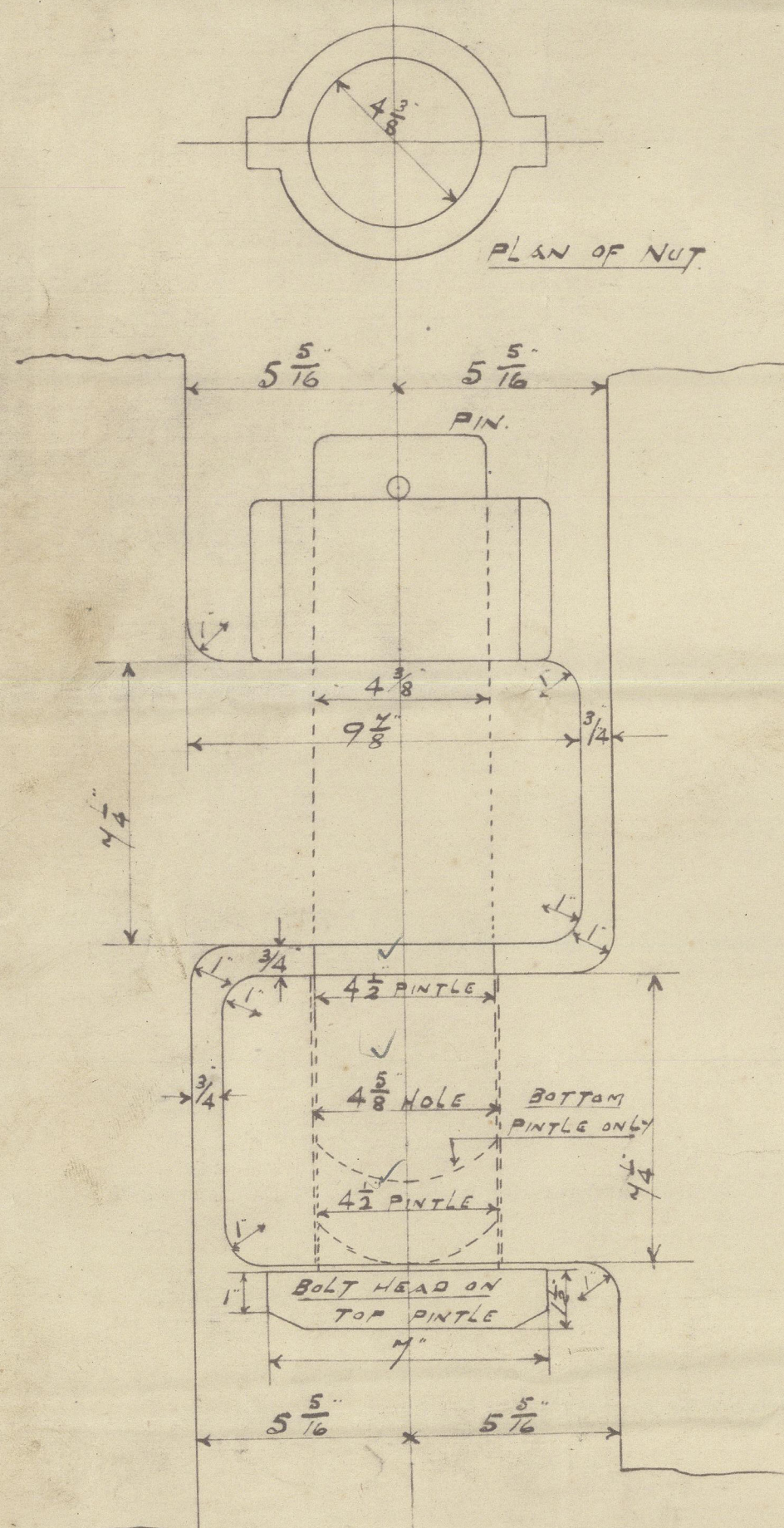


SCALE  $1\frac{1}{2}" = 1$  FOOT.

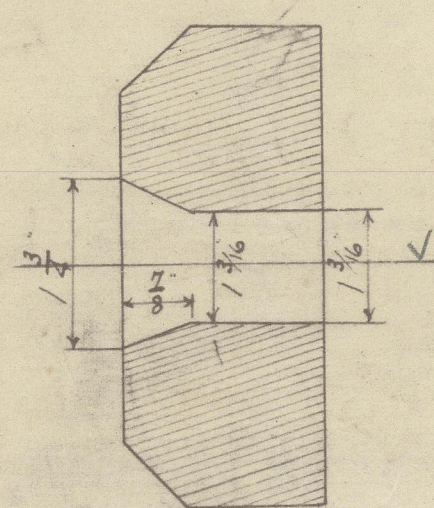


NOTE: THREAD OF COUPLING  
BOLT TO BE WAVE SHAPE  
THUS   
CHECK NUTS FITTED WITH  
TAPERED PINS. BOLTS TO HAVE  
 $\frac{1}{8}$ " TAPER & HEADS TO BE  $\frac{1}{4}$ " CLEAR  
OF BOTTOM OF COUPLING WHEN  
SCREWED UP

DEPTH MLD	27.4
SHEER	4.3
CAMBER	$1\frac{1}{2}$
DECK	$\frac{1}{2}$
	31.9
HEIGHT ABOVE DX	3.7
	35.4
FORE FOOT ABOVE BASE	1.7
	33.9
TWEEN DECKS	7.0
	40.9
	6
	40.3

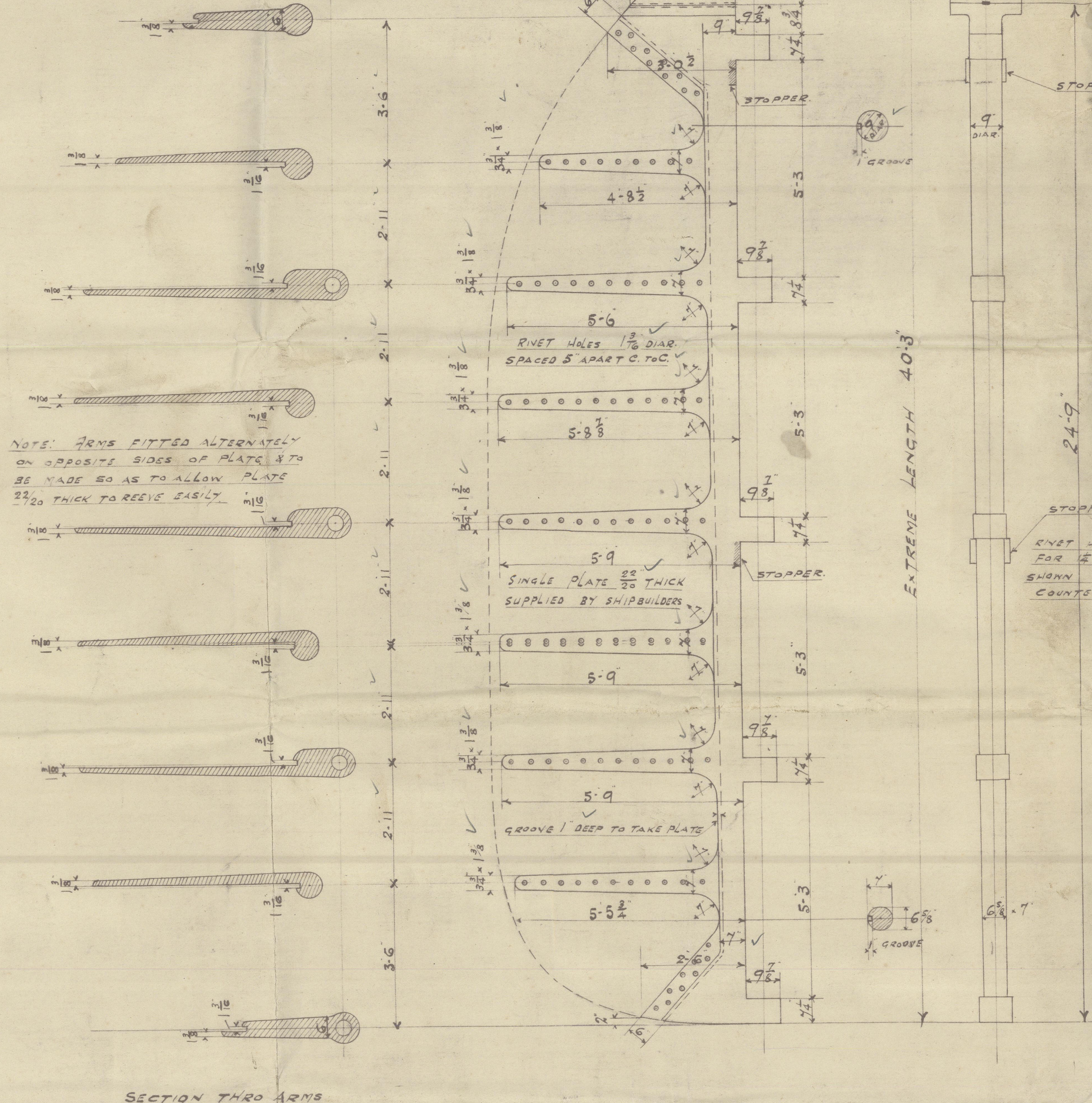


NOTE: CORRECT LENGTH OF TOP PINTLE TO BE MEASURED WHEN RUDDER IS COMPLETE & HEAD TO BE  $\frac{1}{2}$ " CLEAR OF GUDGEON. BOTTOM GUDGEON TO BE SHORT AS SHOWN TO ALLOW FOR  $\frac{1}{2}$ " STEEL DISC.



— S.S. N<sup>o</sup> 122. —

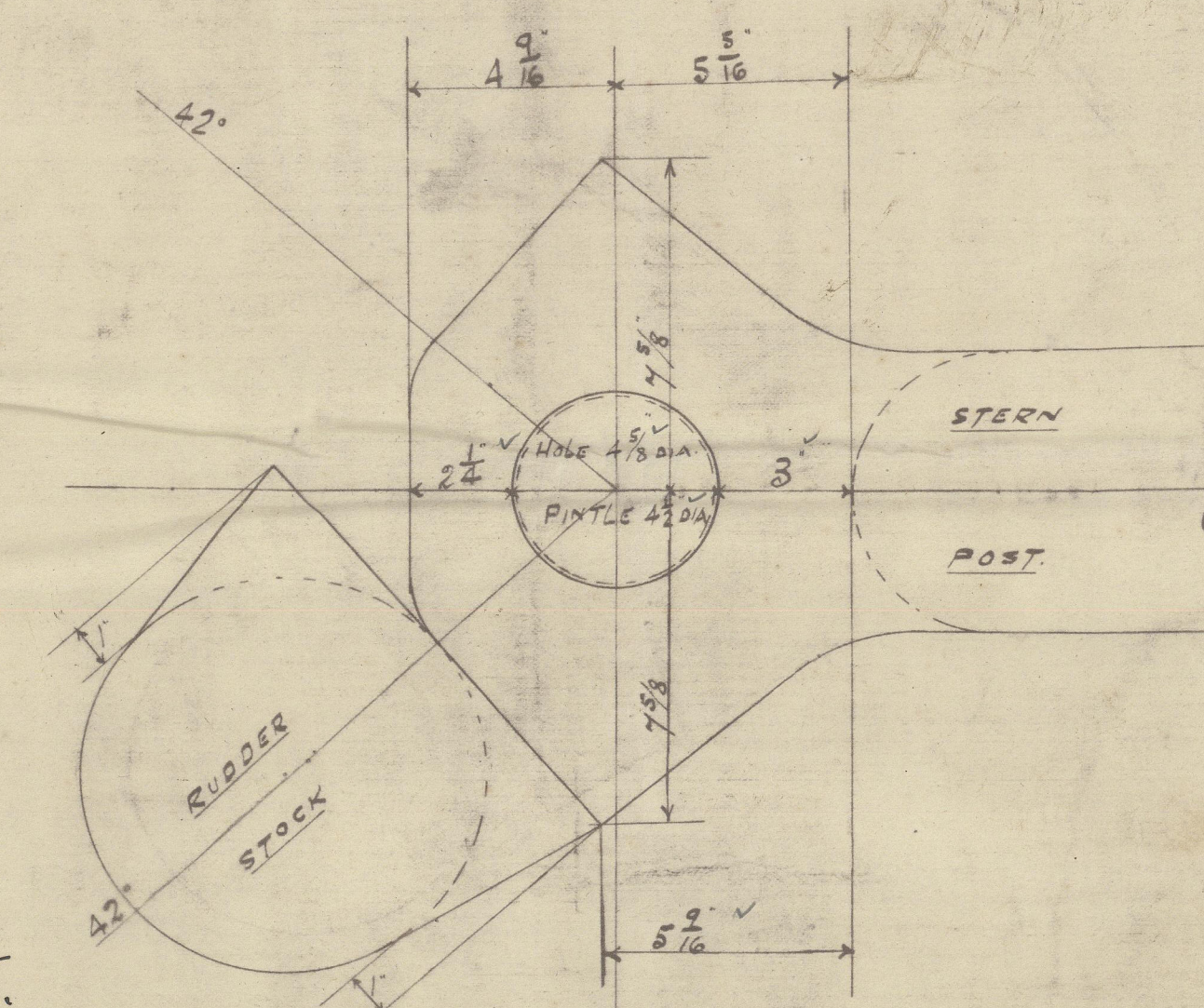
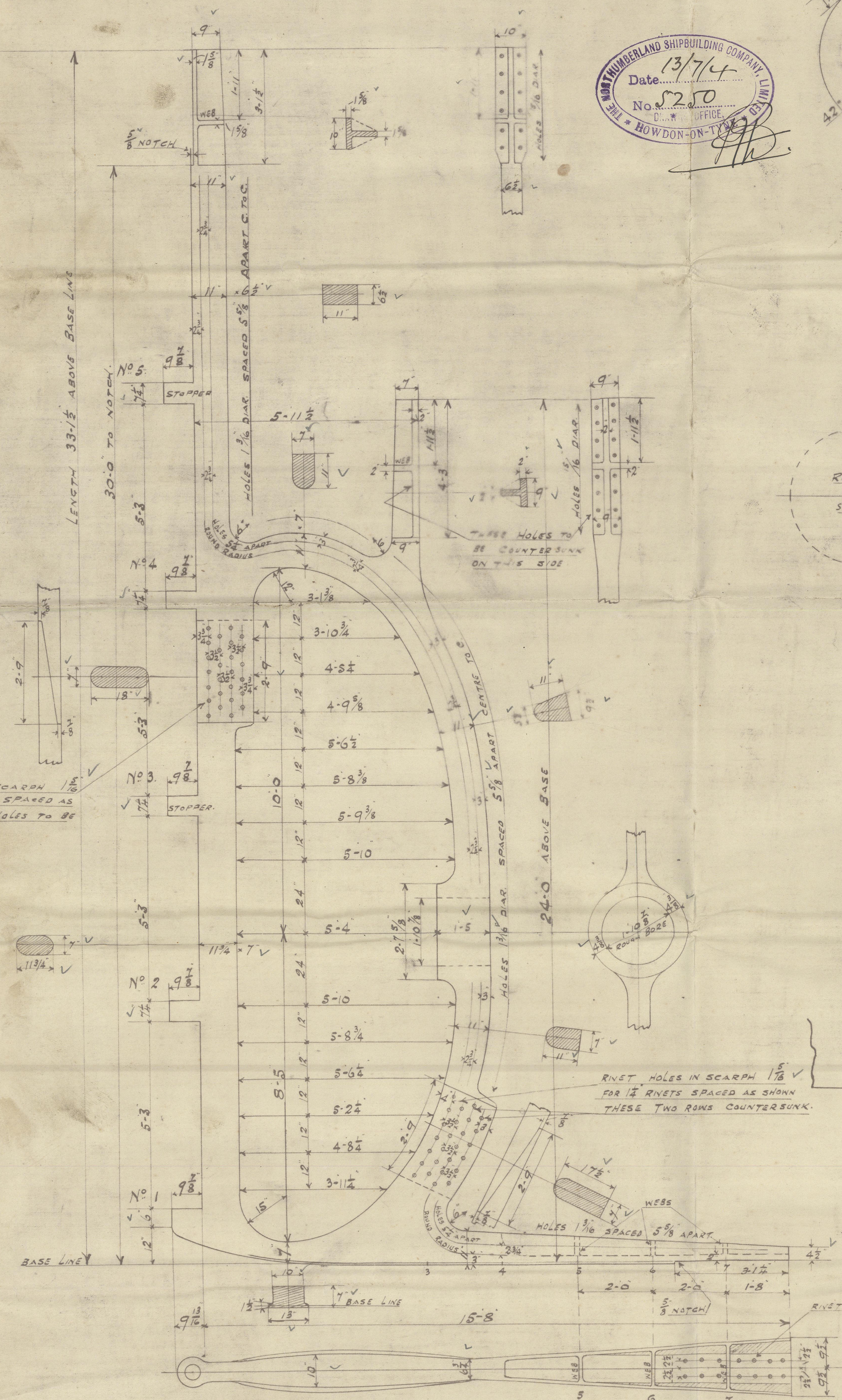
SCALE  $\frac{1}{2}'' = 1 \text{ FOOT}$



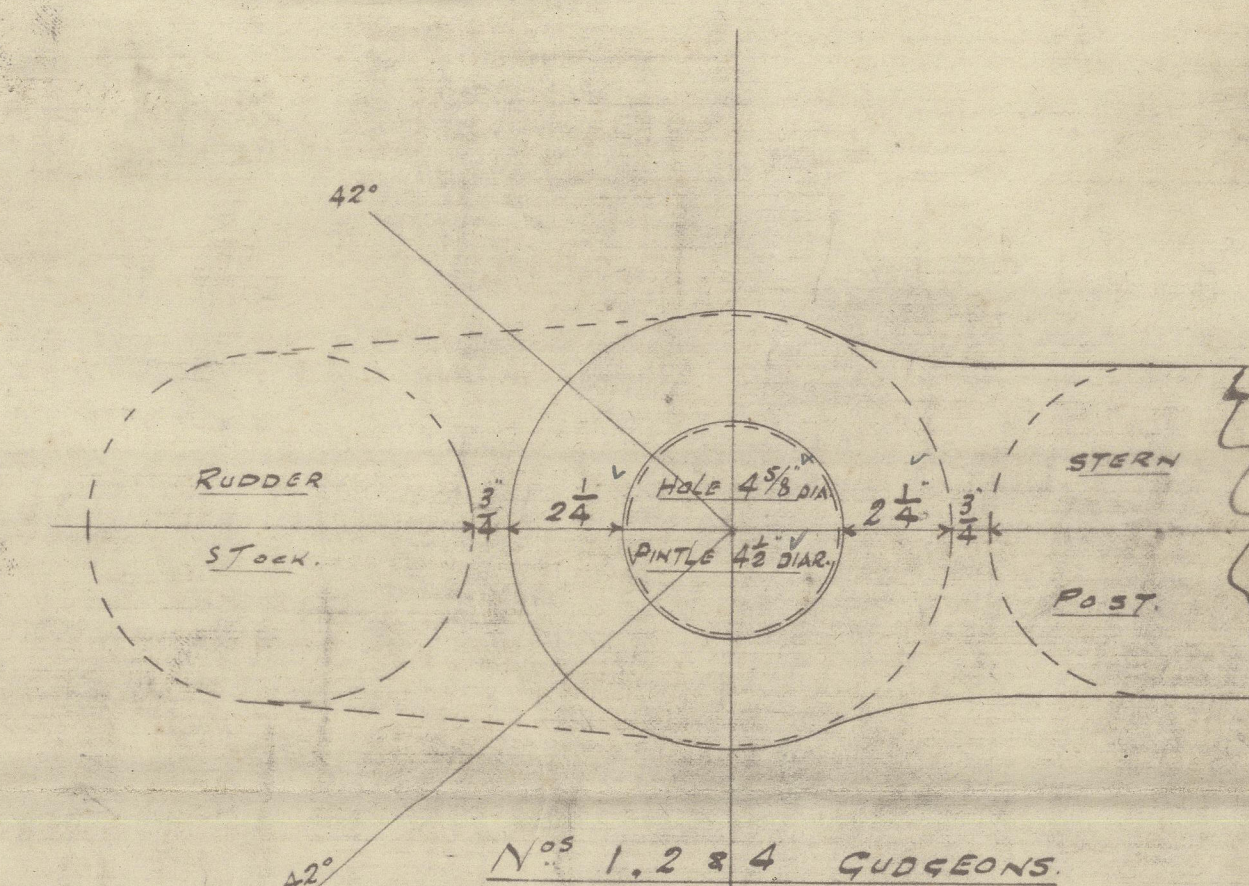
S. S. N<sup>o</sup> 122.

SCALE  $\frac{1}{2}'' = 1$  FOOT

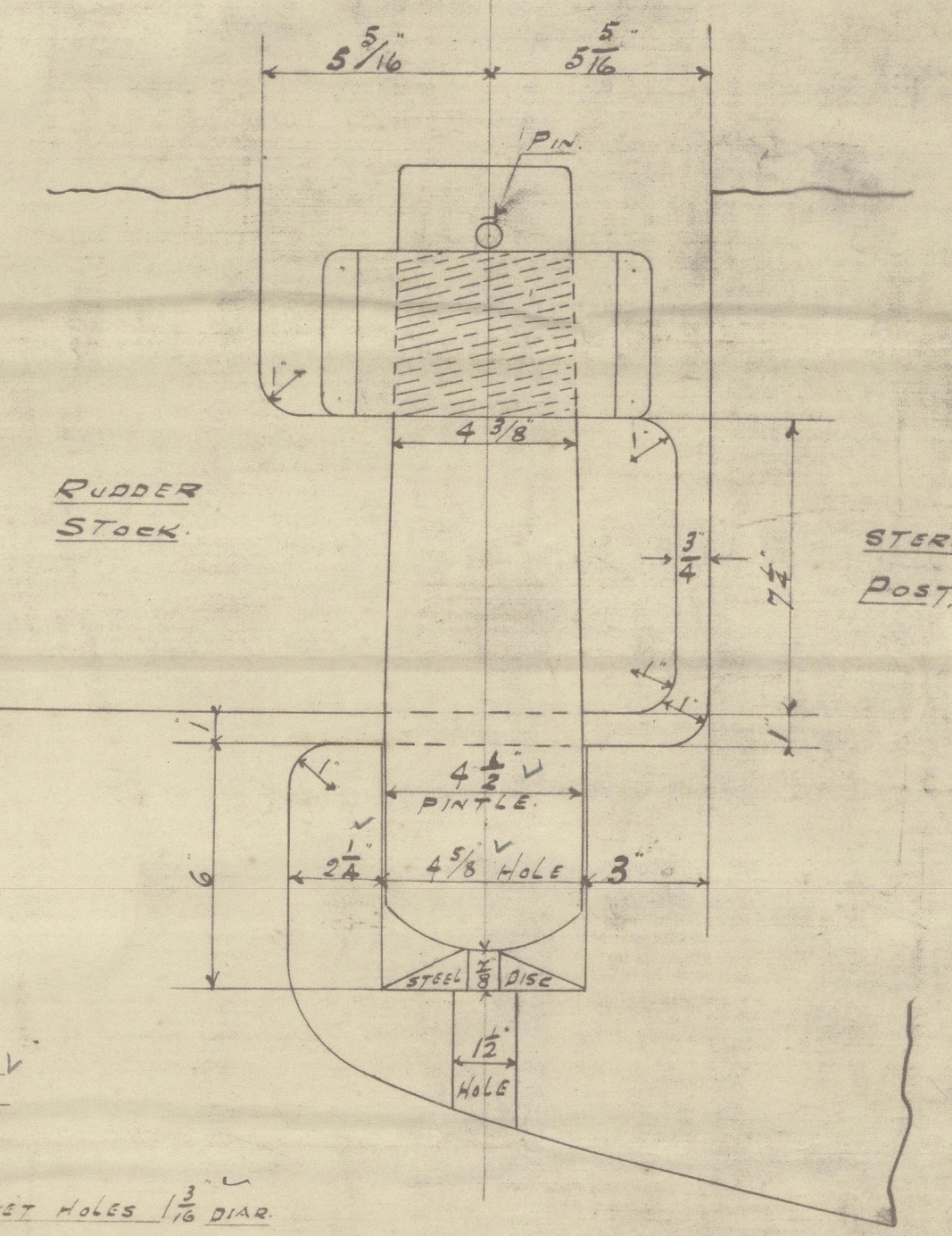
TO PASS LLOYDS TEST.  
FIGURED DIMENSIONS TO BE WORKED TO IN ALL CASES  
CENTRE LINE OF GUDGEONS TO BE IN A PERFECTLY STRAIGHT LINE  
STOPPERS MADE TO ACT TOGETHER WHEN READER IS OVER AT AN ANGLE OF 42°



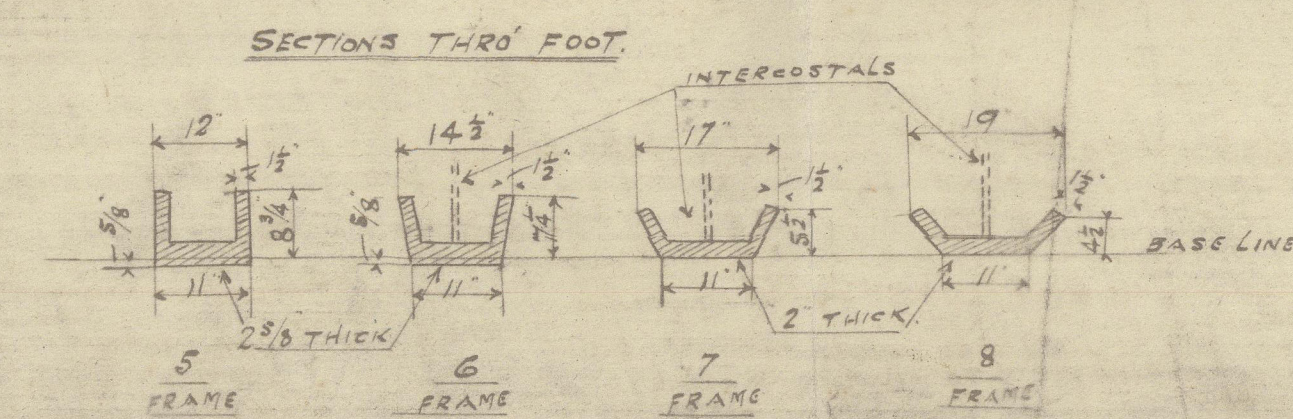
N<sup>os</sup> 3 & 5 GUDGEONS  
WITH STOPPERS.



N<sup>os</sup> 1, 2 & 4. GUDGEONS



SECTION THRO' HEEL



TO PASS LLOYDS TEST.  
FIGURED DIMENSIONS TO BE WORKED TO IN ALL CASES  
CENTRE LINE OF GUDDONS TO BE IN A PERFECTLY STRAIGHT LINE  
STOPPERS MADE TO ACT TOGETHER WHEN RUDDER IS OVER AT AN ANGLE OF  $42^{\circ}$   
RUDDER FACE TO BE A PAIR TAPER FROM FORE TO AFTER EDGES  
THE ARMS TO BE MADE FOR PLATE TO REEVE EASILY.

1844/1844



Northumberland S. Co. Ltd.  
S.S. No. 122

East Street Rudder &  
Sturtevant.

Wm. PRENTISS  
-X-



G. J. Boranka

Newcastle Report

570 48434



© 2020

Lloyd's Register  
Foundation

003175-003180-0034