

Lloyd's Register of Shipping.

19 MAY 1941

SURVEYS FOR FREEBOARD.

N^o 33104

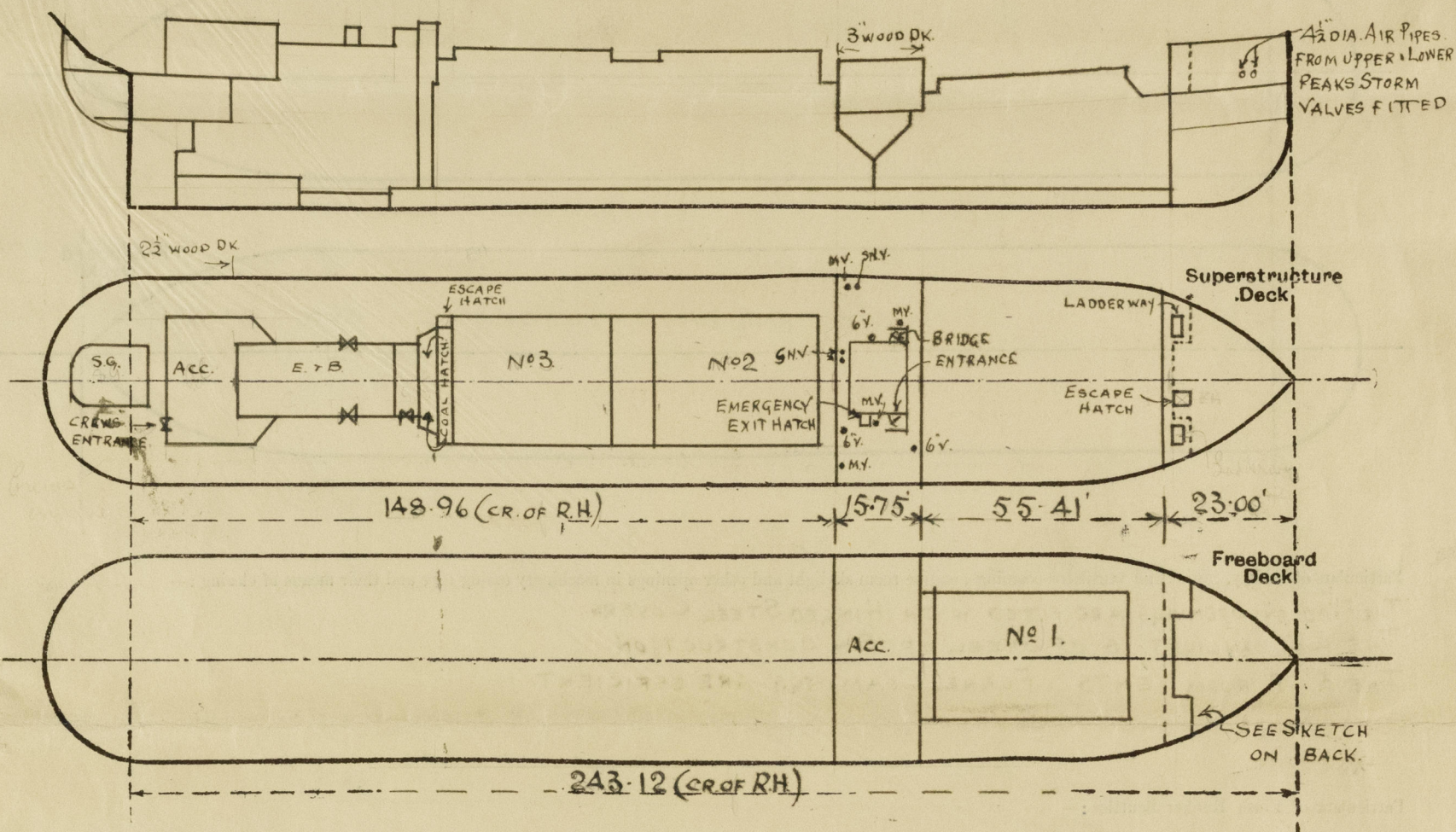
(CONDITIONS OF ASSIGNMENT.)

Ship's Name "CAPITOL"Port of Survey SUNDERLAND.

Official Number

Surveyor's Signature P. HorndaceNationality and Port of Registry BRITISH - LONDON.Date of Survey WHILST BUILDING.

Disposition and dimensions of superstructures, trunks, deckhouses and machinery casings to be inserted in the diagrams and tabular statement: --



Particulars of Superstructures, Trunks, Casings, Deckhouses.

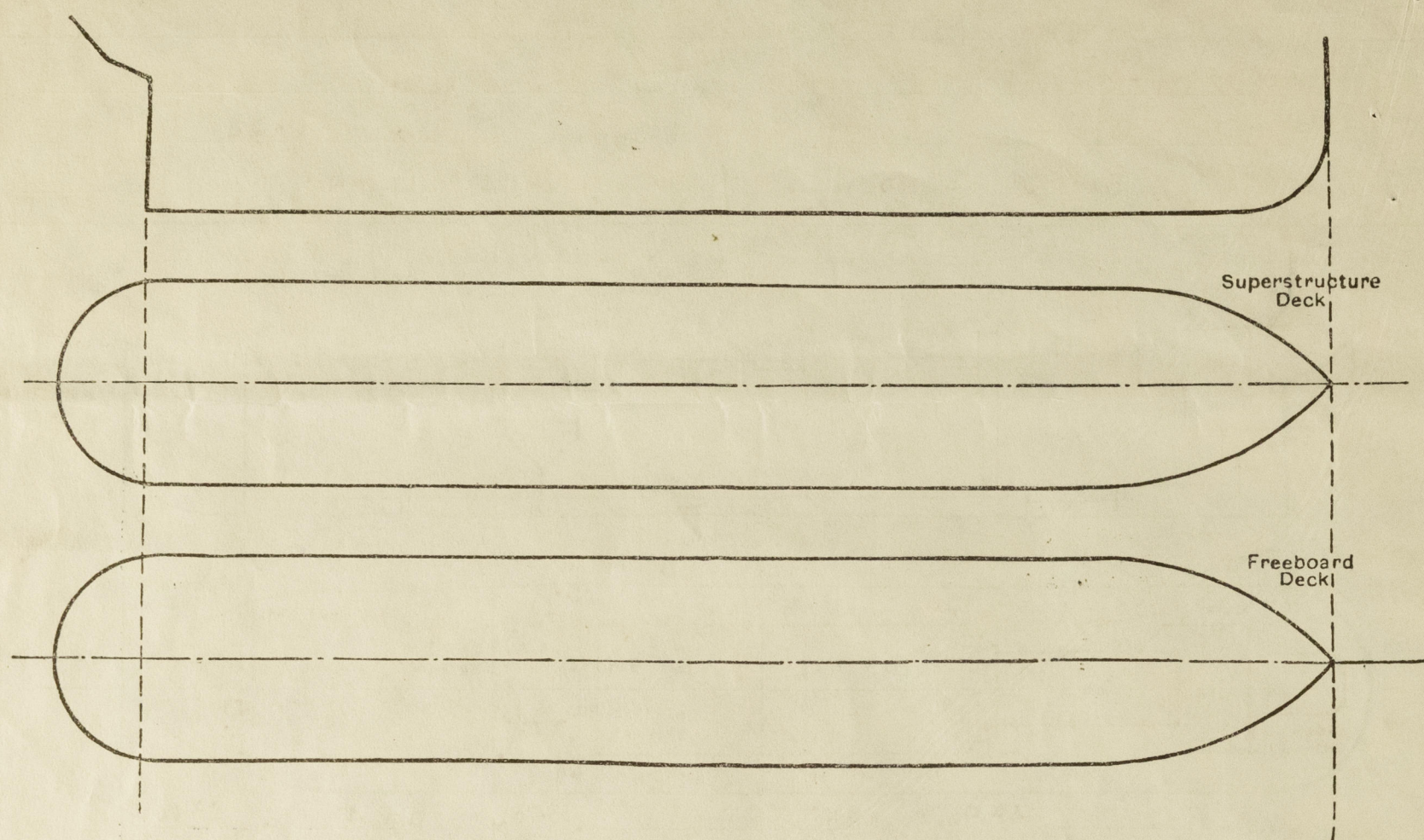
	Coaming	Plating	Stiffeners	Spacing	End Attachments of Stiffeners	Size of Openings	Height of Sills	Height of Casings
Poop Bulkhead ...	-	-	-	-	-	-	-	-
Raised Quarter Deck Bulkhead ...	-	30"	3" x 3" x 5/16"	31"	-	INTACT.	-	7'-0"
Bridge, After Bulkhead ...	-	-	-	-	-	-	-	-
Bridge, Forward Bulkhead ...	-	34"	6 x 3 1/2" x 5/16" BA.	31"	LOGGED.	INTACT	-	7'-0"
Forecastle Bulkhead ...	-	23"	3" x 3" x 3/8"	30"	-	2@ 4'1" x 37"	18"	6'-0"
Trunk, Aft ...	-	-	-	-	-	-	-	-
Trunk, Forward ...	-	-	-	-	-	-	-	-
Exposed Machinery Casings on Freeboard or Raised Quarter Decks ...	B.R. E.R.	32"	3" x 3" x 3/8" 3" x 3" x 5/16"	31" 28"	BKT ² AT TOP.	2@ 4'6" x 24" 1@ 4'6" x 21"	21"	3'-0"
Exposed Machinery Casings on Superstructure Decks ...	-	-	-	-	-	-	-	-
Machinery Casings within Superstructures not fitted with Class I Closing Appliances ...	-	-	-	-	-	-	-	-
Deckhouses on Flush Deck Ships ...	-	-	-	-	-	-	-	-

Particulars of Closing Appliances (state if capable of being manipulated from both sides).

Poop Bulkhead ...	✓
Raised Quarter Deck Bulkhead ...	INTACT. ✓
Bridge, After Bulkhead ...	
Bridge, Forward Bulkhead ...	INTACT. ✓
Forecastle Bulkhead ...	F.H.R. CHANNELS & 3" WEATHER BOARDS. ✓
Exposed Machinery Casings on Freeboard or Raised Quarter Decks ...	HINGED STEEL DOORS - OPERATING BOTH SIDES. ✓
Exposed Machinery Casings on Superstructure Decks ...	✓
Machinery Casings within Superstructures not fitted with Class I Closing Appliances ...	✓
Deckhouses on Flush Deck Ships ...	✓

PARTICULARS OF PROTECTION TO OPENINGS, ETC.

The following diagrams should be used to indicate the positions of cargo and coaling hatchways, gangway, cargo and coaling ports, ventilators, companionways, etc., which would affect the seaworthiness of the ship:—



Particulars of fiddle, funnel and ventilator coamings, engine room skylight and other openings in machinery casing tops and their means of closing:—

THE FIDDLE OPENINGS ARE FITTED WITH HINGED STEEL COVERS.
THE E.R. SKYLIGHT IS OF STEEL OF EW CONSTRUCTION.
THE E.B. ROOM VENTS & FUNNEL COAMINGS ARE EFFICIENT.

Particulars of Flush Bunker Scuttles:—

NIL.

Particulars of Companionways:— ENTRANCE TO CREWS QUARTERS BELOW R.Q.D. ENCLOSED IN AFTER END OF CASING WITH HINGED STEEL DOOR— OPERATING BOTH SIDES. OPENING 4'6" x 21". SILL 18".
ENTRANCE TO BRIDGE ENCLOSED IN STEEL HOUSE ON BRIDGE DK. WITH HINGED TEAK DOOR (P.S.) OPERATING BOTH SIDES. OPENING 5'2" x 26". SILL 6".

Particulars of Ventilators in exposed positions on freeboard and superstructure decks:—

FREEBOARD DECK:— 2 @ 18" DIA. COAMING 15" x 40" ABOVE HATCH.
R.Q. DO:— 2 @ 18" " 15" x 40" "
1 @ 10" " 33" x 34" "
2 @ 8" " 33" x 32" "
1 @ 6" " 33" x 30" "
BRIDGE DK:— 3 @ 6" " 33" x 30" "
3 SWAN NECK 5" DIA x 9" TO MOUTH.
4 MUSH-ROOM 6" " x 6" IN HEIGHT.

THE VENTILATORS ARE IN ACCORDANCE WITH RULE REQUIREMENTS.
CLOSING WOOD PLUGS & CANVAS COVERS.
* FITTED WITH STEEL W/T. COVERS.

Particulars of Air Pipes in exposed positions on freeboard, raised quarter, or superstructure decks:—

FO'CLE DK:— 2 @ 5" DIA x 18" TO MOUTH.
FREEBOARD:— 2 @ 4" " x 36" "
2 @ 3" " x 36" "
1 @ 1 1/4" " x 18" " (ABOVE SHELF PLATE)
R.Q. DK:— 1 @ 4" " LED THRO' BRIDGE END 30" ABOVE R.Q.D.
2 @ 5" " x 30" TO MOUTH.
2 @ 4 1/2" " x 30" "
6 @ 3" " x 30" "

CLOSING:— WOOD PLUGS.

Particulars of Gangway Cargo and Coaling Ports:—

NIL.

Particulars of Scuppers and Sanitary Discharge Pipes:—

ALL DISCHARGE PIPES FITTED WITH STORM VALVES.

Particulars of Side Scuttles:—

HINGED DEAD-LIGHTS FITTED IN BRIDGE SPACE. CREWS QUARTERS AFT.

Vertical distance of Sill of lowest Side Scuttle above top of keel NONE BELOW FREEBOARD DK.

Particulars of Guard Rails:—

FO'CLE DECK:— 2 TIER RAILS 3'3" HIGH. STANCHIONS SPACED ABOUT 4'9" APART.
FREEBOARD DO:— BULWARKS 4'0" " 5'3" x 5/16" BA " 4'6" " RAIL 6'3 1/2" x 5/16" BA.
R.Q. DO:— " 3'0" " 5'3" x 5/16" BA " 6'9" " 6' x 3 1/2" x 5/16" BA.
BRIDGE DO:— " 4'0" EFFICIENTLY SUPPORTED.

Particulars of Gangways, Lifelines, etc.:—

LIFELINE FITTED ACROSS HATCH ON FREEBOARD DECK.

Particulars of Freeing Arrangements.

	Length of Bulwark	Height of Bulwark	Size of Freeing Ports	Number each side	Area each side	Rule area each side
After Well R.Q.D.K. ...	148.96'	3' 0"	12.00' } 7.00' } x .62' 13.50' } 20.25' }	4	32.50 ϕ	29.79 ϕ
Forward Well ...	55.41	4' 0"	12.25' } 13.50' } x .62'	2	15.96 ϕ	11.08 ϕ

State position of each freeing port ... R.Q.D.K. After Well:— 13'6", 47'6", 74'0" & 130'0" FROM BRIDGE END TO FORE END OF OPENING. 10 1/2" ABOVE DK.
(F. and A. position and height above deck edge) Forward Well:— 5'6" & 31'0" " " FRONT " AFTER " " " 11" " "

State whether the freeing ports are fitted with shutters, bars, or rails, and give particulars of such:— SLOTS ONLY.

Additional area where sheer is less than standard.



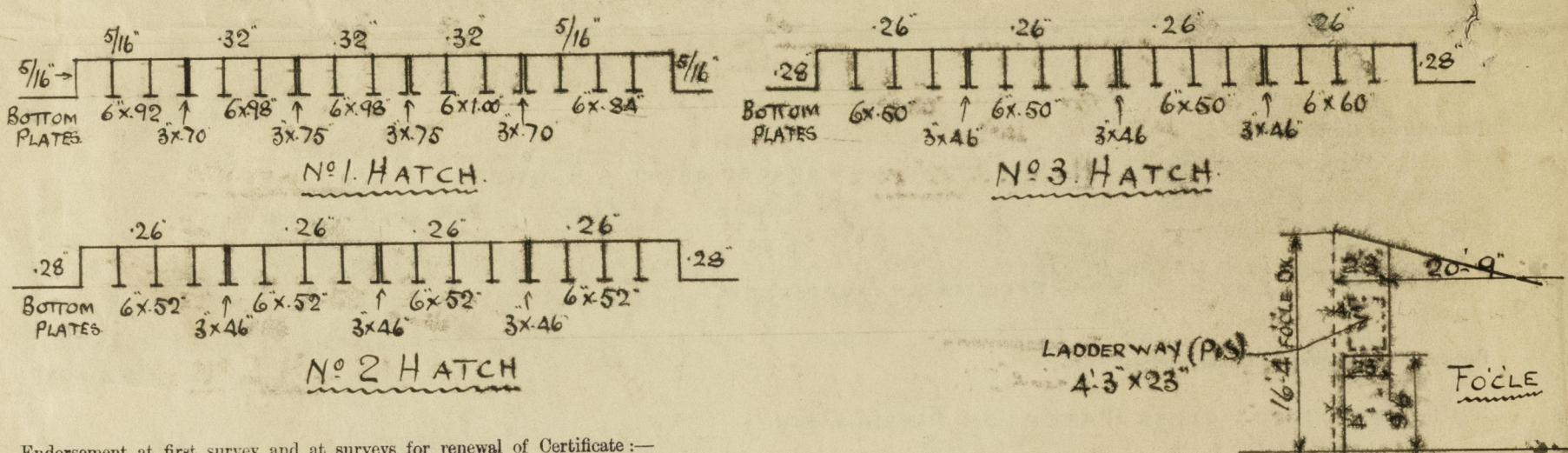
© 2020
Lloyd's Register
Foundation
0117 2 1/2

PARTICULARS OF PROTECTION TO OPENINGS, ETC.

HATCHWAYS ON FREEBOARD AND SUPERSTRUCTURE DECKS.									
FR ² DK. ← RAISED QUARTER DK. → FO ¹ LE DK. BRIDGED DK.									
Description of Hatchway	No. 1	No. 2	No. 3	CASING COAL HATCH	ESCAPE HATCH	ESCAPE HATCH	EMERGENCY EXIT HATCH		
Dimensions of Hatchway	45'3" x 25'8"	36'0" x 25'8"	36'0" x 25'8"	5'10" x 21'6"	1'11" x 23"	1'11" x 30"	1'6" x 19"		
COAMINGS	Height above Deck ... 47" Thickness Sides ... 44" Ends ... 44" ON WIND Stiffeners 12 x 3 1/2 x 45 ... SIDES & FE Brackets, Stays 18 x 34 ... 5 AT SIDE	Height above Deck ... 43" Thickness Sides ... 44" Ends ... 44" ON WIND Stiffeners 12 x 3 1/2 x 45 ... SIDES & FE Brackets, Stays 18 x 34 ... 4 AT SIDE	Height above Deck ... 43" Thickness Sides ... 44" Ends ... 44" ON WIND Stiffeners 12 x 3 1/2 x 45 ... SIDES & FE Brackets, Stays 18 x 34 ... 4 AT SIDE	8'0" 30" 30"	30" 30" 30"	30" 32" 32"	21" 30" 30"		
HATCH BEAMS	Number ... 15 Spacing ... 29'-36" Scantling and Sketch ... 11 1/2" x 32" ALSO SEE BELOW.	Number ... 15 Spacing ... 26 1/2" Scantling and Sketch ... 11 1/2" x 32"	Number ... 15 Spacing ... 25 1/2'-29 1/2" Scantling and Sketch ... 11 1/2" x 32"						
FORE AND AFTERS	Number ... Spacing ... Unsupported Lengths ... Scantling* and Sketch ... Bearing Surface ...								
HATCH COVERS	Material ... STEEL Thickness ... 31'-32" How fitted ... T Bearing Surface ... SEE SKETCH	Material ... STEEL Thickness ... 26" How fitted ... T Bearing Surface ... SEE SKETCH	Material ... STEEL Thickness ... 26" How fitted ... T Bearing Surface ... SEE SKETCH	R.W. 3" F & A 4 1/2"	W/T STEEL COVER	W/T STEEL COVER	W/T STEEL COVER OPERATING BOTH SIDES		
Spacing of Cleats	39"	39'-42"	39'-42"	23"					
Number of Tarpaulins				2					

*Are wood fore and afters steel shod at all bearing surfaces? ✓
 Are battens and wedges efficient and in good condition? AT COAL HATCH - YES.
 Are tarpaulins in good condition and in accordance with rule requirements? AT COAL HATCH. YES.
 Are lashings provided in accordance with rule requirements? ✓

Particulars of any special features: — MAC GREGOR'S HATCH COVERS. ✓



Endorsement at first survey and at surveys for renewal of Certificate:—

The fittings and appliances are in accordance with the particulars shown on this form (or as now modified) and are in good condition.

$$\frac{1.92 \times 5.5}{16.33} = \frac{23'-0" - 2'-9"3" - 20'-3"9"}{21.40}$$



© 2020

Lloyd's Register Foundation