

No. 1358. M. O. S. 65.
EMERGENCY PROGRAMME.
STEAM CARGO VESSEL "Y" TYPE.
MIDSHIP SECTION.

SCALE $\frac{1}{2}$ = ONE FOOT.

TO CLASS 100 AI WITH FREEBOARD AT LLOYDS SPECIAL SURVEY
COMPLETE SUPERSTRUCTURE VESSEL WITH TONNAGE OPENING

DIMENSIONS:- 425'-0" B.P. ON L.W.L. x 56'-0" MLD - 56'-3" EXT. x 27'-0" MLD TO 2ND DK - 36'-0" MLD TO UPPER DK.

ALSO TO CLASS B.S.* WITH FREEBOARD SPECIAL SURVEY BRITISH CORPORATION.

LLOYDS NUMERALS.

FIRST LONGITUDINAL NUMBER L x D = 425'-0" x 35'-75" = 15193.75
SECOND LONGITUDINAL NUMBER L x (B x D) = 425'-0" x (56'-0" x 35'-75") = 38995.75
L/D TO UPPER DECK = 425'-0" ÷ 36'-75" = 11.55
D MOULDED DEPTH = 27'-75" + 8'-0" = 35'-75"
d = 36'-75" (9'-0" + 3'-75") - 3' FOR HIGHER BKT. = 23.9
d AT HALF LENGTH FORWARD = 26.39

EQUIPMENT NUMBER.

SECOND LONGITUDINAL NUMBER = 425'-0" x (560 + 36'-75") = 39418.75
FORECASTLE = 40'-0" x 75' x 34 = 225.00
MIDSHIP ACCOMMODATION & CASING = 72'25" x 8'-0" x $\frac{1}{2}$ " = 289.00
SALOON ACCOMMODATION = 30'-0" x 8'-0" x $\frac{1}{2}$ " = 120.00
EQUIPMENT NUMBER = 40052.75

EQUIPMENT.

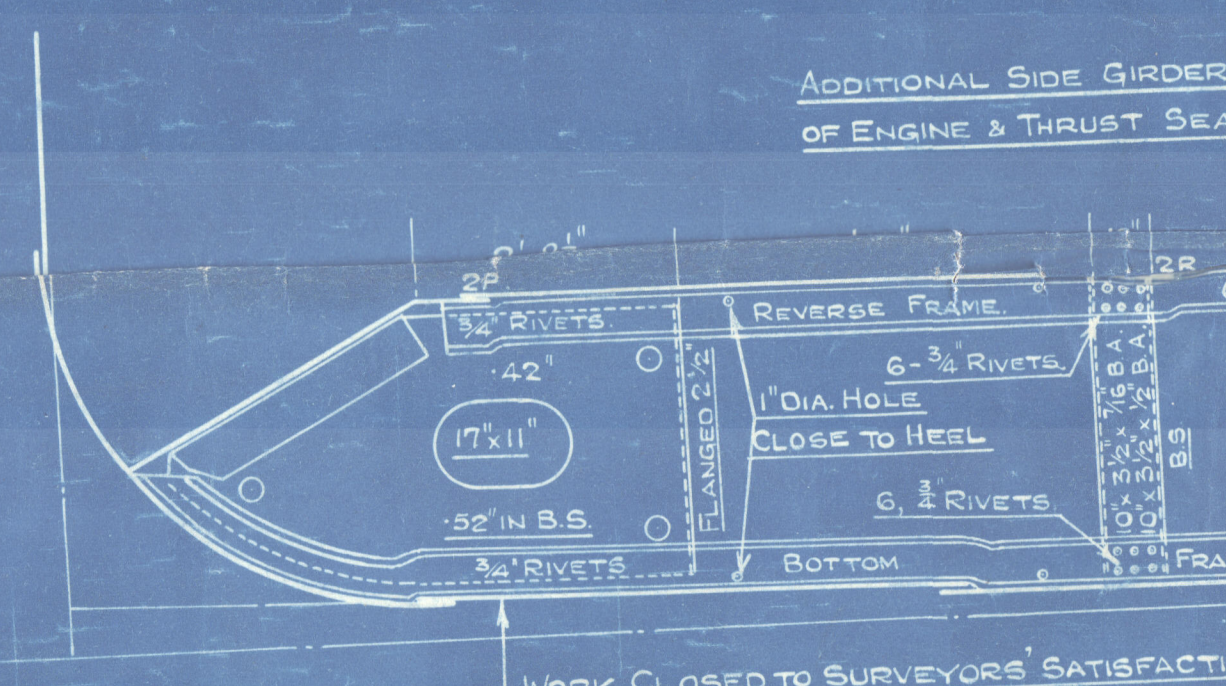
1 BOWER ANCHOR 58 1/2 CWTs. STOCKLESS (NOT FITTED PER EMERGENCY REGS.)
1 STREAM ANCHOR 19 CWTs EX- STOCK
(RULE 270 FATHOMS) 225 FATHOMS 2 1/2" STUD CHAIN CABLE 600 CWTs
90 FATHOMS 1 1/2" STREAM CHAIN OR 5' FLEXIBLE STEEL WIRE 9/12
120 FATHOMS 4 3/4" SPECIAL FLEXIBLE STEEL WIRE 6" x 24"
2 HAWSERS 90 FATHOMS 8' HEMP OR 2 1/2" FLEXIBLE STEEL WIRE 9/12
2 WARPS 90 FATHOMS 7' HEMP OR 2 1/2" FLEXIBLE STEEL WIRE 9/12

RVETING NOTE.

RIVETS IN FRAMES TO FLOORS AND CROSS TIE PLATES IN AFT PEAK SPACED 5 DIAS. APART.
RIVETS IN FRAMES TO SHELL AT FLAT OF DOUBLE BOTTOM FOR HALF LENGTH FOR SPACE
RIVETS IN FRAMES TO SHELL AT FLAT OF DOUBLE BOTTOM FOR HALF LENGTH FOR
RIVETS IN SIDE FRAMES TO SHELL SPACED 6 1/2 DIAS APART 5 1/2 DIAS. APART IN WAY OF FOR
TANKS AND DEEP FRAMING FOR
RIVETS IN BOTTOM FRAMES TO SHELL AFT HALF LENGTH FOR SPACED 7 DIAS. APART CR.
RIVETS IN 3R BUTTS OF OUTSIDE PLATING AND OF DECK STRINGER PLATES SPACED 3 1/2
RIVETS IN 4R BUTTS OF OUTSIDE PLATING AND OF DECK STRINGER PLATES SPACED 4 DIAS.
RIVETS IN BEAMS OF SHELL PLATING, DECK PLATING AND INNER BOTTOM PLATING AS PER
RIVETS IN BEAMS & BUTTS OF BULKHEAD AND TUNNEL PLATING, MARGIN ANGLES AND WE
RIVETS IN BEAMS & BUTTS OF BULKHEAD AND TUNNEL PLATING, MARGIN ANGLES AND WE
RIVETS IN FLAT KEEL ANGLES, VERTICAL ANGLES CONNECTING FLOORS TO CENTRE GIRDER A
OF WATERTIGHT BULKHEAD FRAME SPACED 5 DIAS APART CR. TO CR.
RIVETS IN FRAMES TO FLOORS AFT HALF LENGTH FOR REVERSE FRAMES TO FLOORS AND
VERTICAL ANGLES TO FLOORS AND SIDE GIRDERS, IN BULKHEAD STIFFENERS (EXCEPT
AND IN DECK PLATING TO BEAMS ON EVERY FRAME SPACED 7 DIAS. APART CR. TO CR.
RIVETS IN CENTRE GIRDER TOP ANGLES SPACED 5 DIAS APART CR. TO CR. NON-WATERTIGHT
RIVETS IN CENTRE GIRDER TOP ANGLES SPACED 5 DIAS APART CR. TO CR. WATERTIGHT

THE SCANTLINGS OF ANGLE, BULB, ANGLE AND CHANNEL
SECTIONS GIVEN ON THIS PLAN ARE N.B.S. AND ARE IN ACCORDANCE
WITH THE EMERGENCY PROGRAMME LIST.

STEM 10" x 25" STERN POST 10 1/2" x 8" RUDDER POST 10 1/2" x 8"



SPECIAL PLAN OF BOTTOM STRENGTHENING
FORWARD TO BE SUBMITTED LATER

SOLID FLOORS ON
FOR 1/2 LENGTH
PARTIAL SOLID ON
EVERY THIRD FR

KEEL OUT.

50" x 78" FOR 1/2 LEN. x TO 68"
AT ENDS BUTTS LAPPED &
4R TO 3R AT ENDS.
1" RIVETS IN BUTTS OVER 172"

IN THE EVENT OF SCARCITY OF LABOUR
ELECTRIC WELDING WOULD BE ADOPTED
WHEREVER PRACTICABLE.

CENTRE GIRDER.

43 1/2" x 54" FOR 1/2 LEN. x 46" AT ENDS
60" IN BOILER SPACE BUTTS LAPPED & 3R.
VERTICAL ANGLES 3 1/2" x 36" x 43 1/2" SINGLE 4" x 4" B.S.
5" x 6" x 6" SINGLE UNDER ENGINE SPACE & THRUST
SEATING 6" x 6" x 6" UNDER BOILER BEARERS.

DOUBLE UNDER ENGINES.

12'-0" TO INTERCOSTAL GIRDER

KEEL ANGLES 4" x 4" x 16" FOR 1/2 LEN. x TO 50" AT ENDS.

A. IN.

78" x 63" FOR 1/2 LEN. x
TO 50" AT ENDS.
BUTTS LAPPED & 4R TO 3R

B. OUT.

70" x 63" FOR 1/2 LEN. x
TO 50" AT ENDS.
BUTTS LAPPED & 4R TO 3R

C. CLINKER.

68 1/2" x 63" FOR 1/2 LEN. x
TO 50" AT ENDS.
BUTTS LAPPED & 4R TO 3R

D. IN.

68 1/2" x 63" FOR 1/2 LEN. x
TO 50" AT ENDS.
BUTTS LAPPED & 4R TO 3R

BLISS KEEL 10" x 50" BULB PLATE
FOR ABOUT 110'-0" AMIDSHIPS.

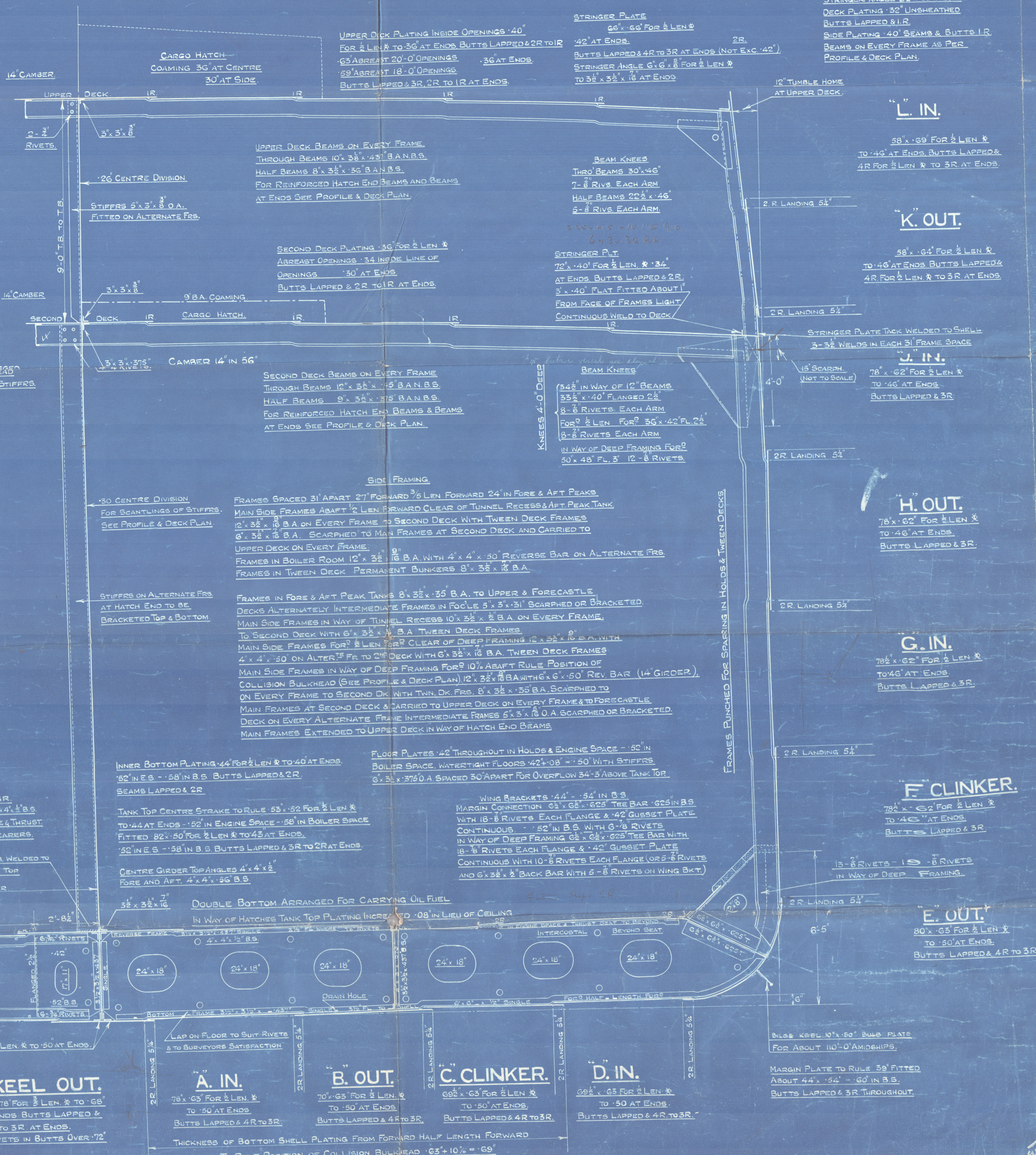
MARGIN PLATE TO RULE 39" FITTED
ABOUT 44" x 54" - 60" IN B.S.
BUTTS LAPPED & 3R THROUGHOUT.

THE SCANTLINGS ARE SUITABLE FOR A DRAUGHT 18" IN
EXCESS OF THAT CORRESPONDING TO THE FREEBOARD WHICH
COULD BE ASSIGNED TO THE VESSEL WITH A TONNAGE OPENING
FITTED AS SHOWN ON THE PLAN.

Nº 1358 TO B.C. CLASSIFICATION

Nº 1358 B.C. CLASSIFICATION

C.Nº
425' x 56' x 35' x 75' = 6516
625' x 44' x 8' x 35' = 119
35' x 60' x 7' x 50' = 69
6704



28 JAN 1941

W. J. DUNN & BROTHERS
DRAWING OFFICE
25 JAN 1941

FORECASTLE

STRINGER PLATE 36" BUTTS 1R.
STRINGER ANGLE 3 1/2" x 3 1/2" x 375"
DECK PLATING 32" UNSHEATHED
BUTTS LAPPED & 1R.
SIDE PLATING 40" BEAMS & BUTTS 1R.
BEAMS ON EVERY FRAME AS PER
PROFILE & DECK PLAN.

L. IN.

58" x 63" FOR 1/2 LEN. x
TO 46" AT ENDS BUTTS LAPPED &
4R FOR 1/2 LEN. x TO 3R AT ENDS.

K. OUT.

58" x 64" FOR 1/2 LEN. x
TO 46" AT ENDS BUTTS LAPPED &
4R FOR 1/2 LEN. x TO 3R AT ENDS.

J. IN.

78" x 62" FOR 1/2 LEN. x
TO 46" AT ENDS.
BUTTS LAPPED & 3R

H. OUT.

78" x 62" FOR 1/2 LEN. x
TO 46" AT ENDS.
BUTTS LAPPED & 3R

G. IN.

78 1/2" x 62" FOR 1/2 LEN. x
TO 46" AT ENDS.
BUTTS LAPPED & 3R

F. CLINKER.

78 1/2" x 62" FOR 1/2 LEN. x
TO 46" AT ENDS.
BUTTS LAPPED & 3R

E. OUT.

80" x 63" FOR 1/2 LEN. x
TO 50" AT ENDS.
BUTTS LAPPED & 4R TO 3R

9

Midship Section

W^m Penny & Bros.

No. 1258. EMPIRE CAMERON

EMPIRE CAMERON

NOW ST MARGARET

Barbours

Steel

RETAIN

003240-003244 0001

© 2020

9

Lloyd's Register
Foundation

From William Denny & Brothers, Ltd.,

For Enclosure to

Messrs

The British Corporation

003240-003244-0001 2