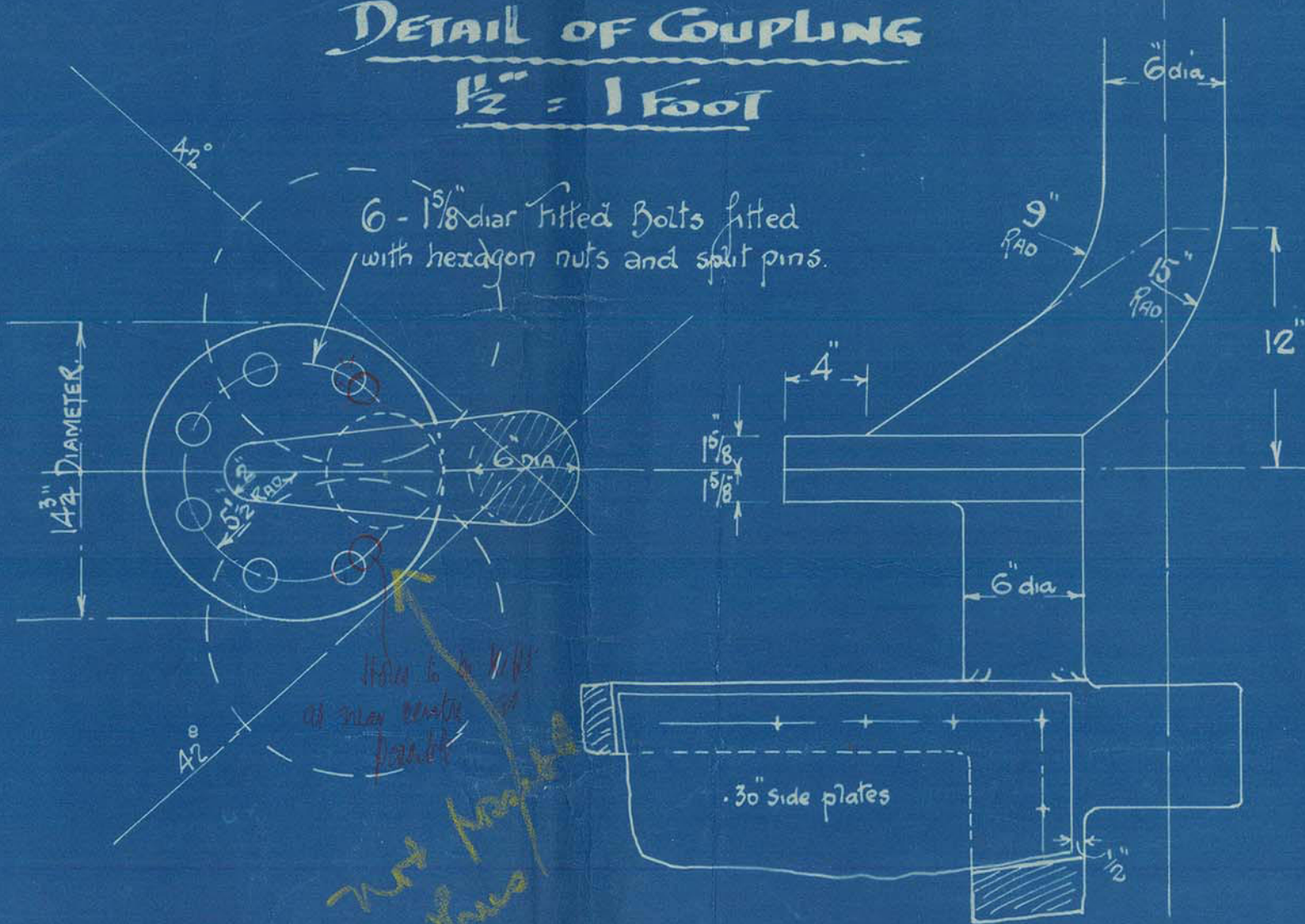


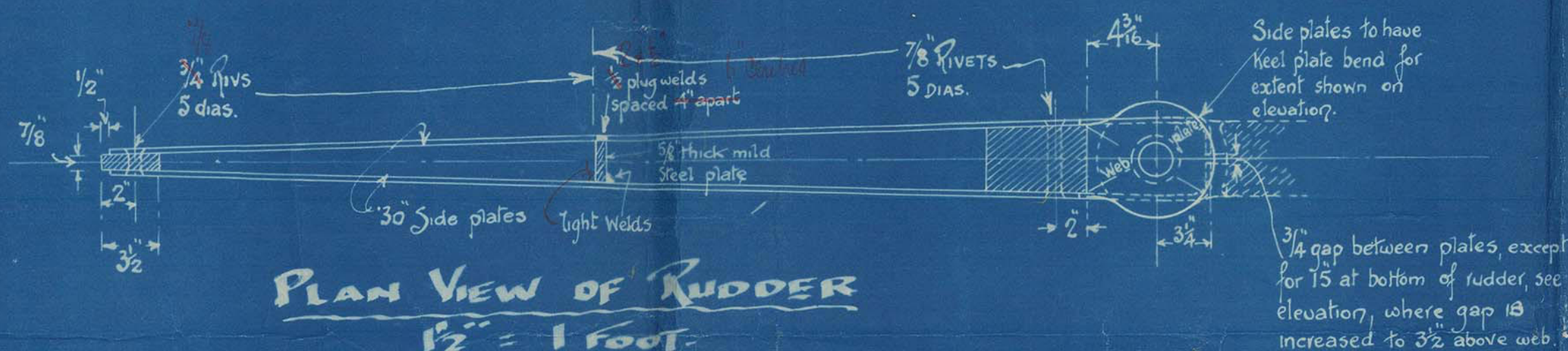
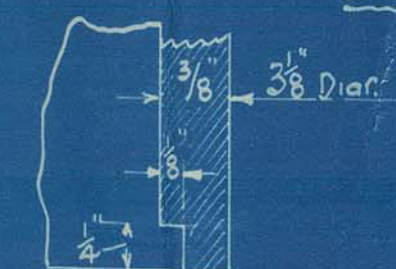
70-12-31

DETAIL OF COUPLING

1/2" = 1 FOOT



DETAIL OF PUSHING AT BOTTOM OF GUDGEONS, SEE PLAN "A" RUDDER GUDGEON "B" STERN FRAME GUDGEON.



PLAN VIEW OF RUDDER

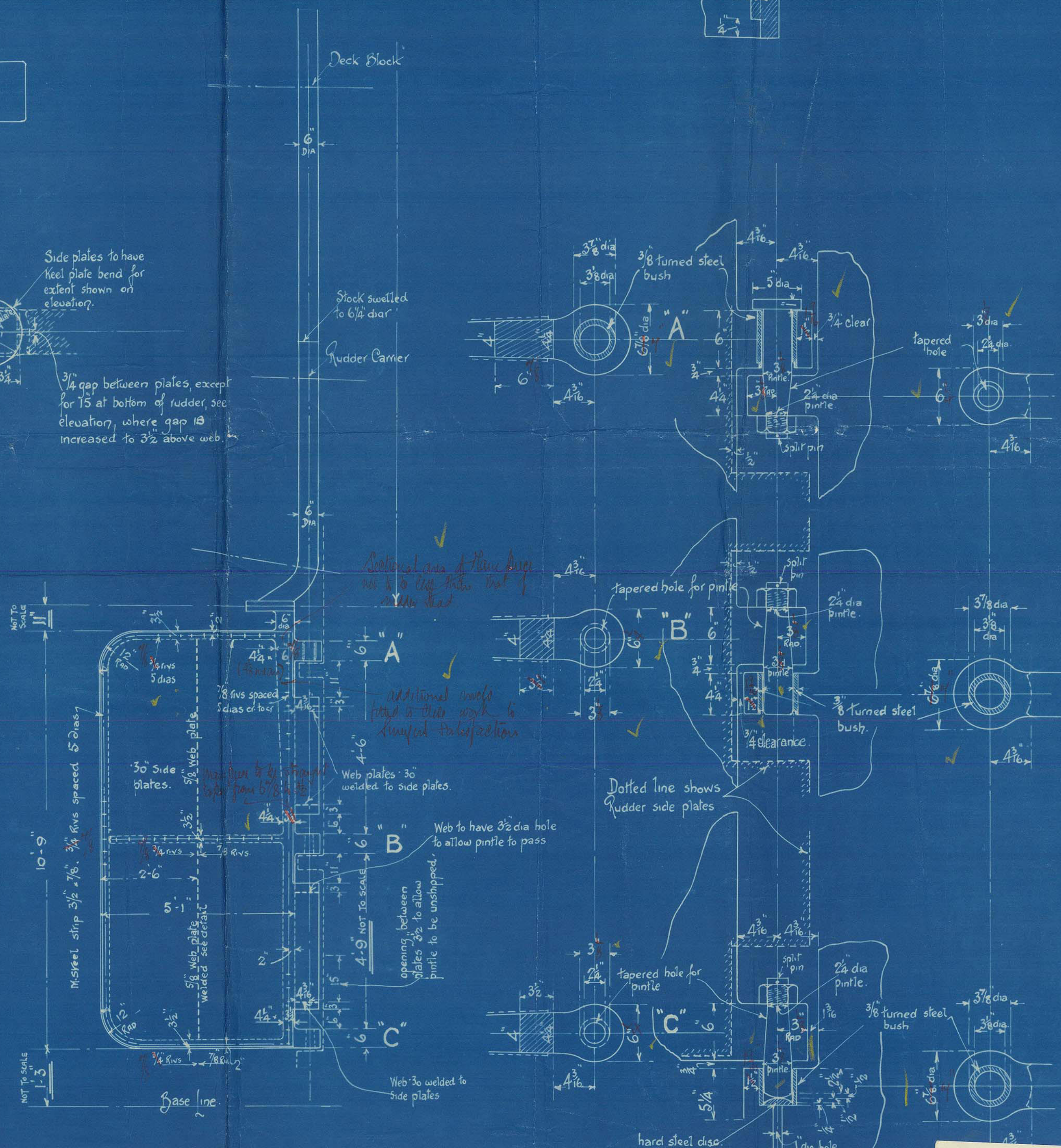
1/2" = 1 FOOT

Nº 596 SHIP. RUDDER PLAN.

Scale 1/2" & 1/2" = 1 FOOT

A = D = 160 - SPEED 10 KNOTS.

Rudder Stock to be of best Forged ingot steel. Mainpiece & Stays to be of best scrap Forged steel. Bow to be of mild steel. Rudder Frame Drilled for rivets to diameters and pitch indicated on plan. Rudder gudgeon "A" to be fitted with 3/8 steel liner, other gudgeons to have tapered holes for pintle, exact spacing of Rudder gudgeons to be taken from Stern frame. Rudder Stock and centre of pintles to be a perfectly fair line. All to Lloyd's Patent Tests and requirements.



DETAIL OF PINTLE & GUDGEONS

1/2" = 1 FOOT

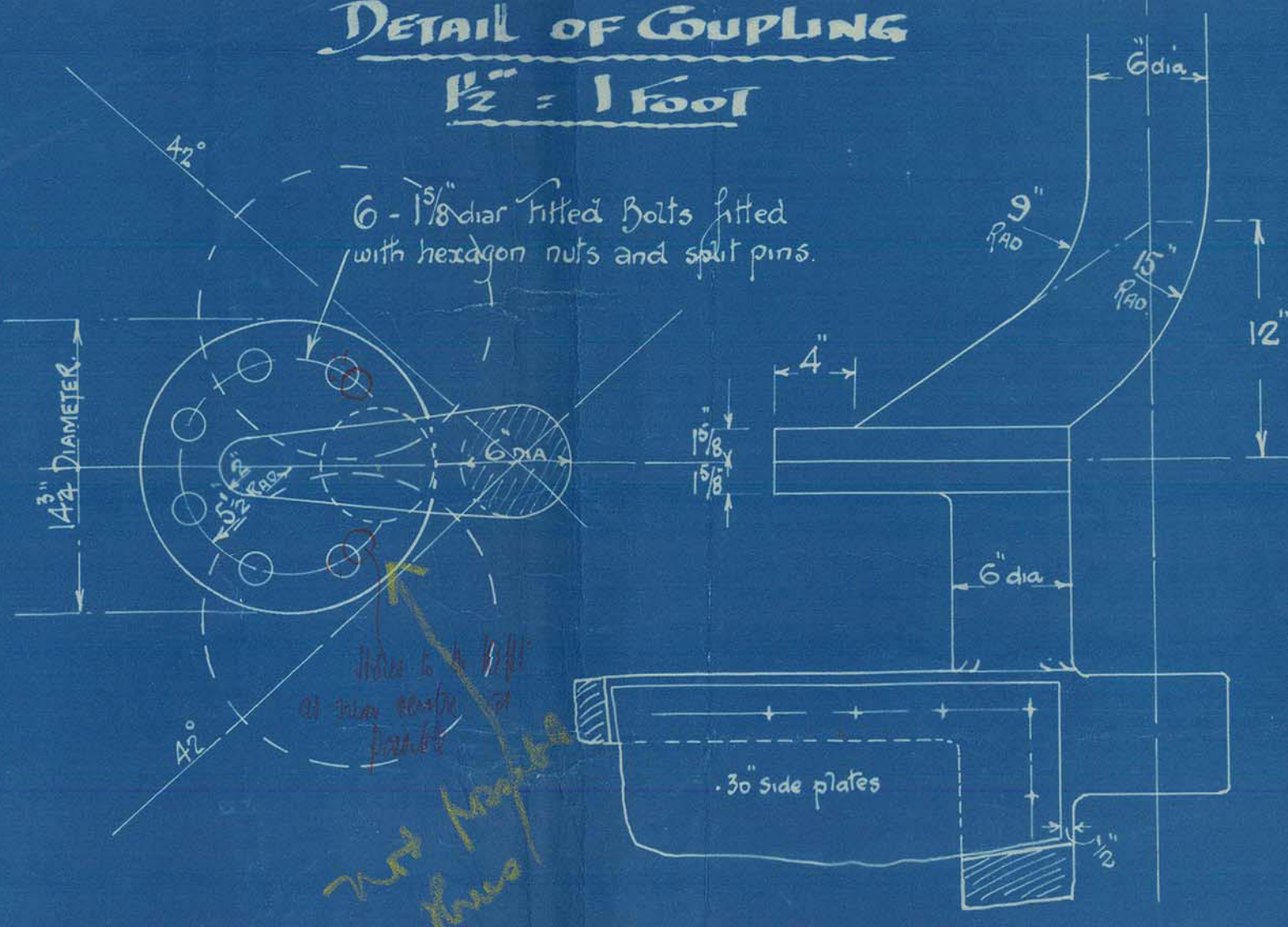
ENCLOSURE TO
Lloyds N/C
FROM R. & W. HAWTHORN, LESLIE & CO. LTD.
HEBBURN-ON-TYNE
003252-003262-0004 1/2



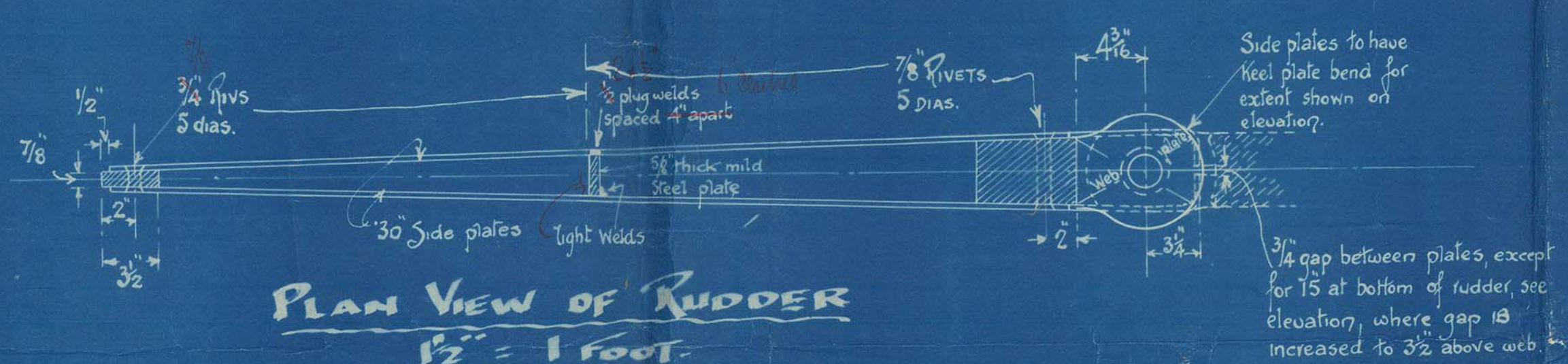
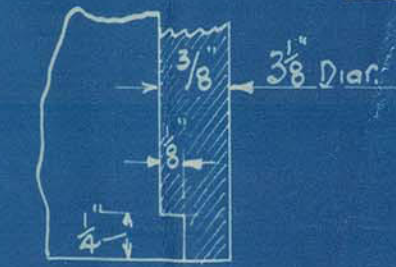
3802
Lloyd's Register
003252-003262-0004 1/2

70 17 34

DETAIL OF COUPLING 1/2" = 1 foot



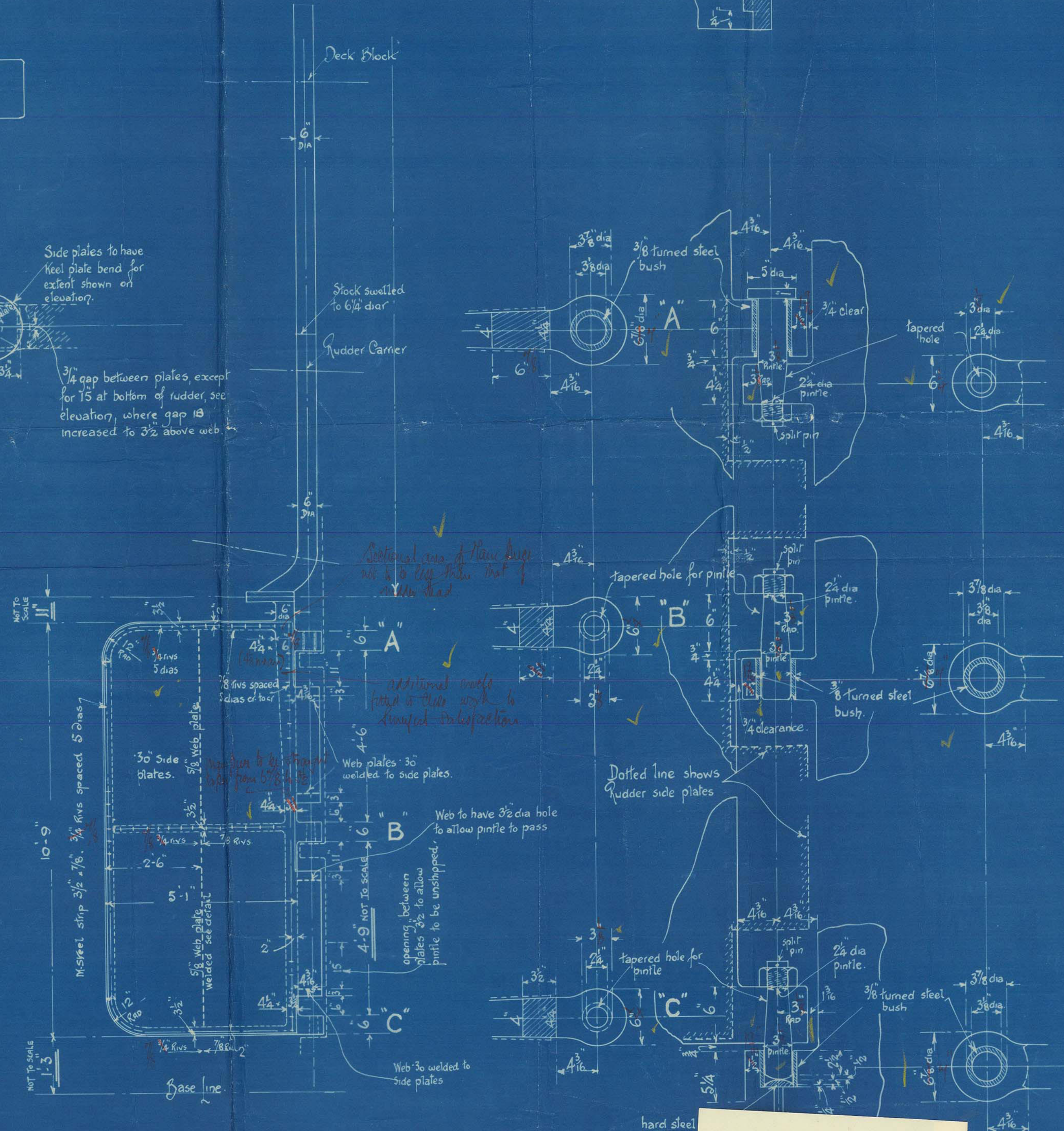
DETAIL OF BUSHING AT BOTTOM OF GUDGEONS, SEE PLAN. "A" RUDDER GUDGEON FULL SIZE "B" STERN FRAME GUDGEON.



Nº 596 SHIP. RUDDER PLAN.

Scale 1/2" x 1/2" = 1 foot
A + D = 160 - SPEED 10 KNOTS.

Rudder Stock to be of best forged ingot steel, Mainpiece & Stays to be of best scrap forged steel. Bow to be of mild steel. Rudder frame drilled for rivets to diameters and pitch indicated on plan. Rudder gudgeon "A" to be fitted with 3/8" steel liner, other gudgeons to have tapered holes for pintle. exact spacing of Rudder gudgeons to be taken from Stern frame. Rudder Stock and centre of pintles to be a perfectly fair line. All to Lloyd's latest Tests and requirements.



hard steel

3872
all

LR

Lloyd's Register
3802
all

003257-003262-003264 2 1/2

596.

Rudder Plan

Hawthorn Leslie

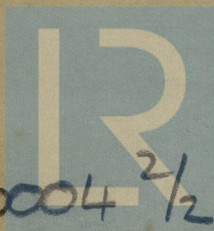
7

Lloyd's Land Land
"Northumbrian Coast"

SS "THORNABY"

NEWCASTLE ON TYNE.

Report No. 92619.



© 2020

Lloyd's Register
Foundation

003252-003262-0004 2 1/2