



— No 241. —

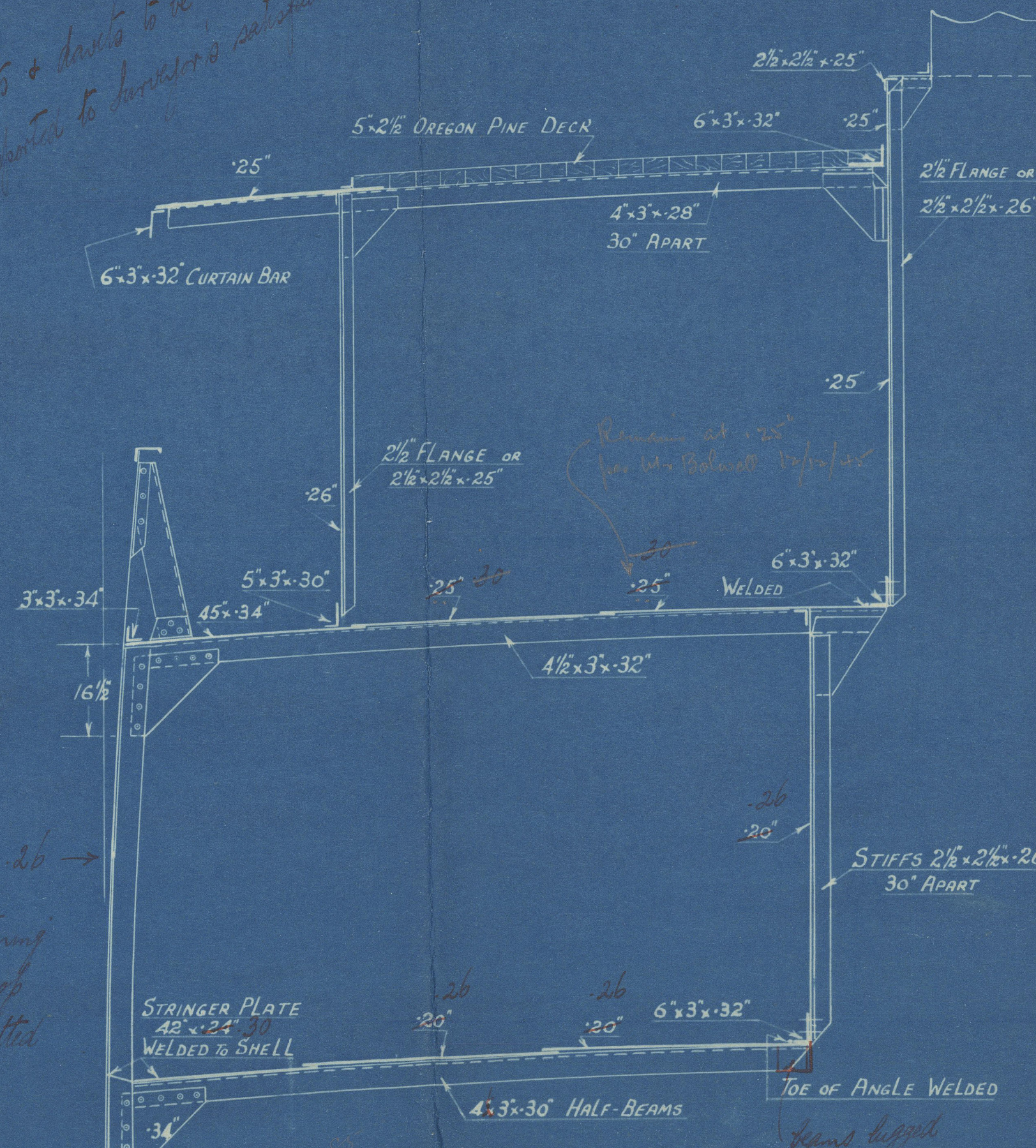
MOTOR COASTER DIMNS - 190'-0" x 32'-6" x 13'-0" MLD.

MIDSHIP SECTION

SCALE - 1/2 IN. = 1 FT.

TO LLOYDS 100 A.I. FOR NAVIGATION IN ICE.

L x D	2470
L x (B + D)	8645
D	13
L/D	14.62

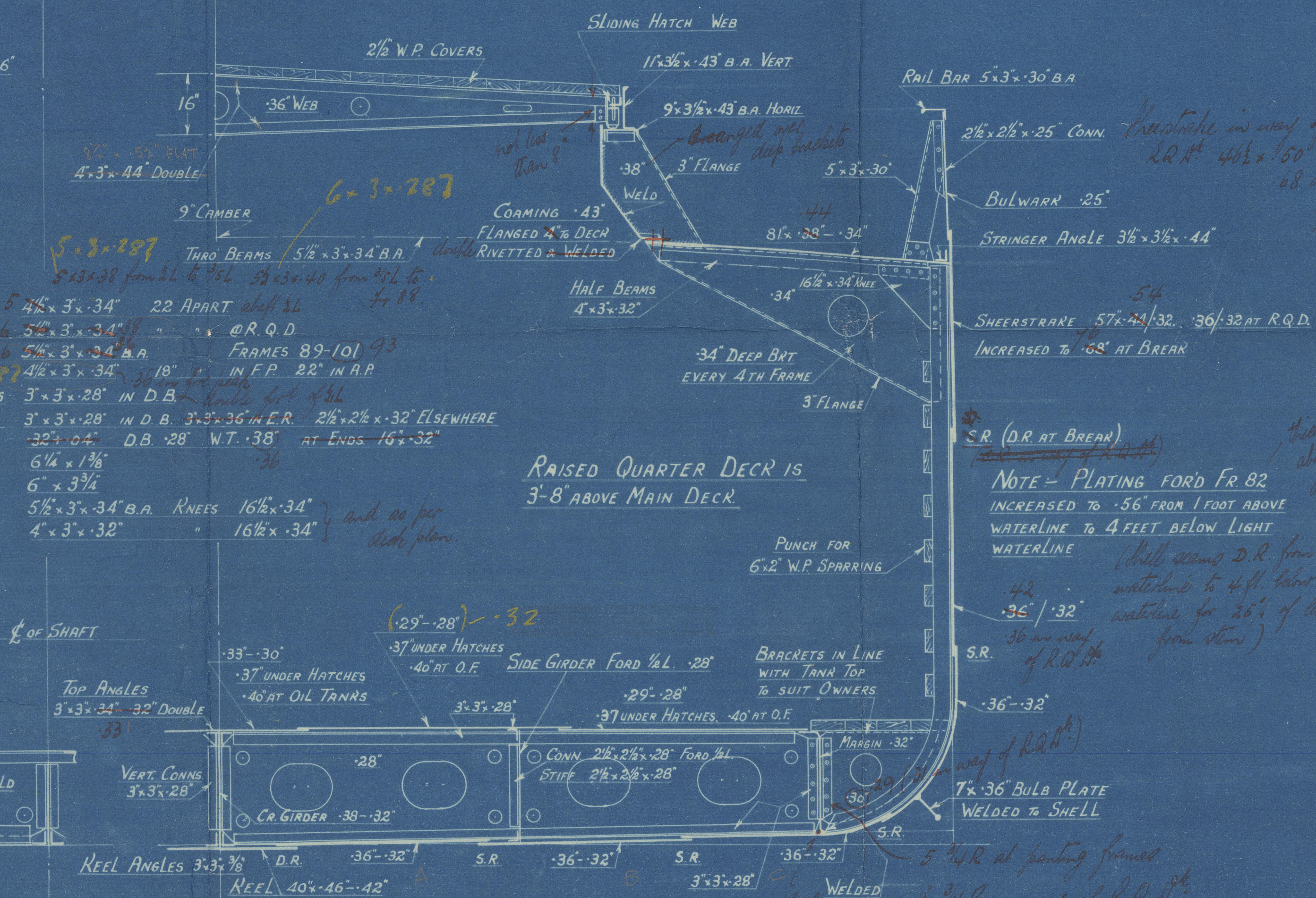


SECTION IN WAY OF ENGINE ROOM.

FRAMES IN E.R. 5" x 3" x 34" WITHOUT WEBS

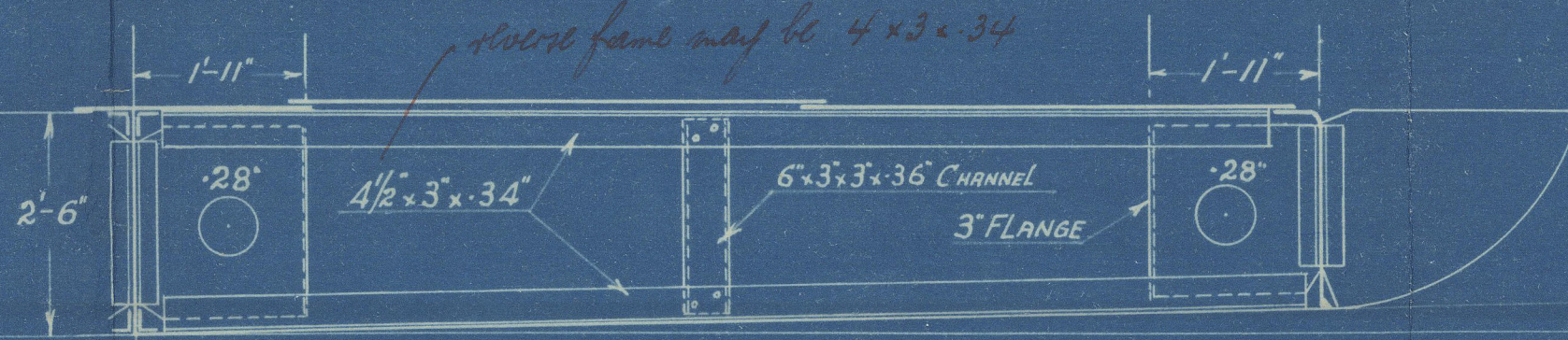
SIDE FRAMES	5" x 3" x 34" 22 APART abt 26
	6" x 3" x 34" " " @ R.Q.D.
	6" x 3" x 34" B.A. FRAMES 89-101 93
	4 1/2" x 3" x 34" 18" IN F.P. 28" IN R.P.
BOTTOM FRAMES	3" x 3" x 28" IN D.B. 36" in f.p. 36"
REVERSE "	3" x 3" x 28" IN D.B. 3" x 3" x 36" IN E.R. 2 1/2" x 2 1/2" x 32" ELSEWHERE
FLOORS IN E.R.	32" x 4" D.B. 28" W.T. 38" AT ENDS 16" x 32"
STEM	6 1/4" x 1 1/2"
STERNPOST	6" x 3 3/4"
BEAMS	5 1/2" x 3" x 34" B.A. KNEES 16 1/2" x 34"
HALF-BEAMS	4" x 3" x 32" 16 1/2" x 34"

RAISED QUARTER DECK IS
3'-8" ABOVE MAIN DECK.



EQUIPMENT:-

2 BOWER ANCHORS	STOCKLESS 19CWT EACH
1 " "	16 1/4 "
1 STREAM "	5 1/4 " EX. STOCK
210 FATHOMS	1 3/8" STUD CHAIN CABLE
60 "	3 1/4" S.W.R. STREAM WIRE
90 "	3" " TOWLINE
1 @ 90 "	2 1/4" " HAWSER
1 @ 90 "	1 3/4" " WARP



BRACKET FLOORS AFT OF 1/3 LENGTH FOR D
SOLID FLOOR EVERY 3RD FRAME



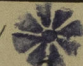
003257-003262-C044



Geo Brown & Co.

No. 241

Midship Section

"TEDDY" 

GREENOCK 1st ENTRY KPT. No. 23493

2



© 2020

Lloyd's Register
Foundation

003252-003262-0044