

REC'D NEW YORK JAN 29 1960

Lloyd's Register of Shipping.

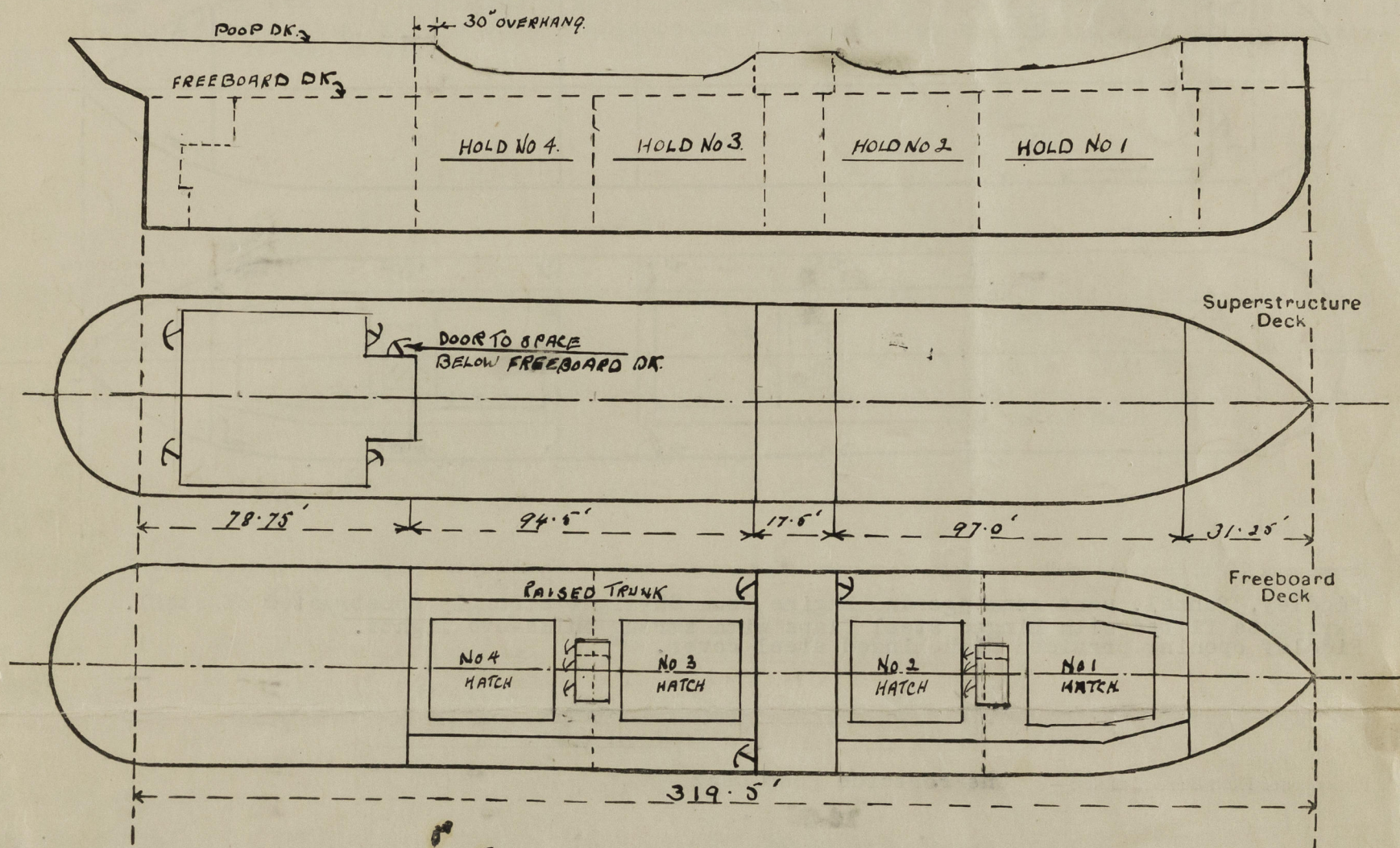
SURVEYS FOR FREEBOARD.

(CONDITIONS OF ASSIGNMENT.)

Index No.
(For London Office only.)

Ship's Name "JONANCY" Port of Survey Newport News, Va.
 Official Number 376 Surveyor's Signature W.D. Wardle
 Nationality and Port of Registry Liberian, Monrovia Date of Survey Dec. 30th 1959. Jan. 4, 14 & 15th 1960.

Disposition and dimensions of superstructures, trunks, deckhouses and machinery casings to be inserted in the diagrams and tabular statement:—



Particulars of Superstructures, Trunks, Casings, Deckhouses.

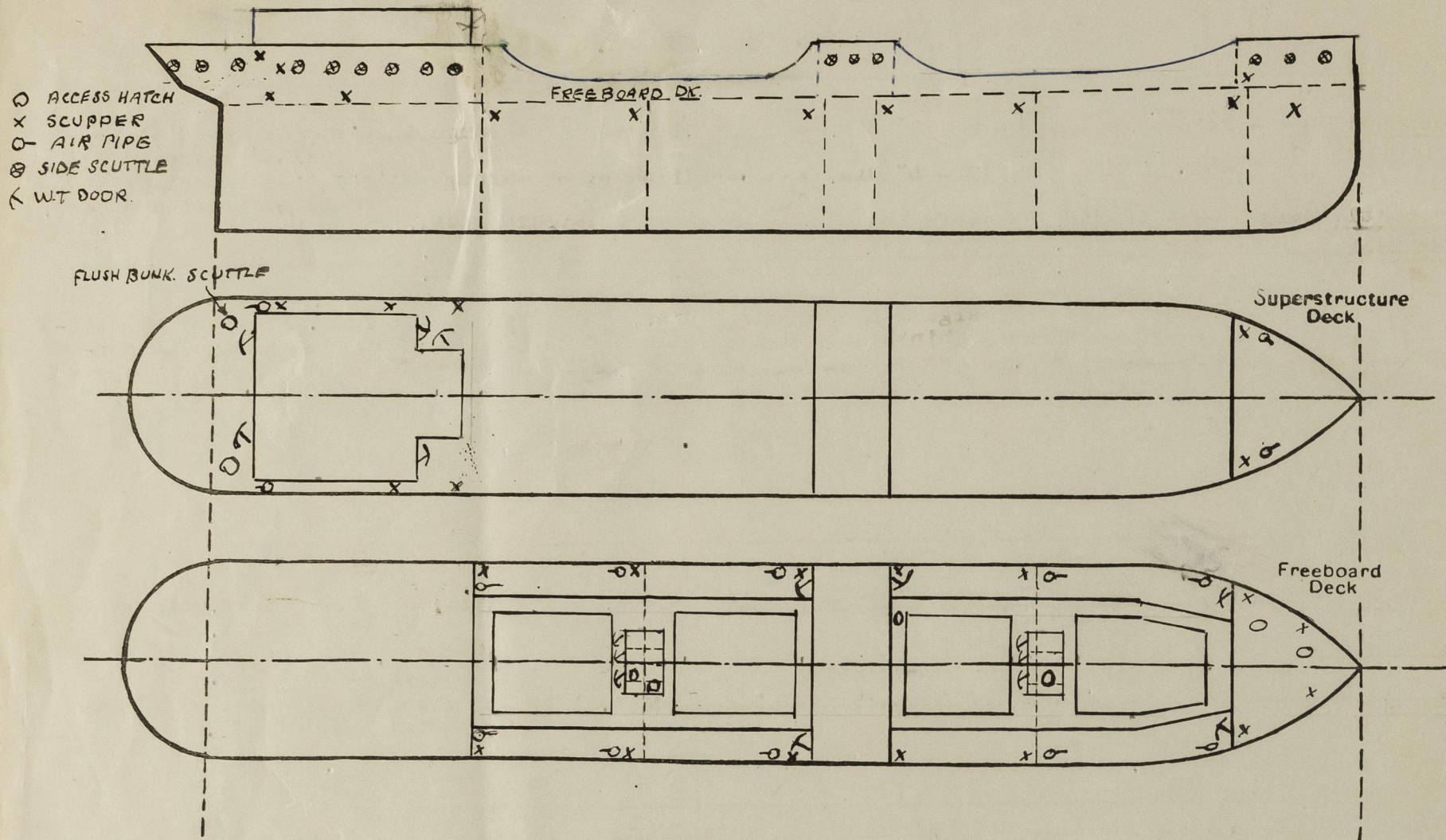
	Coaming	Plating	Stiffeners	Spacing	End Attachments of Stiffeners	Size of Openings	Height of Sills	Height of Casings
Poop Bulkhead ...		1/2"	7x3 1/2"x3/8"	28"	None	None	-	7'-6"
Raised Quarter Deck Bulkhead ...								
Bridge, After Bulkhead ...	1/2"	3/8"	7x3 1/2"x3/8"	28"	None	24" x 60"	18"	9'-6"
Bridge, Forward Bulkhead ...	1/2"	1/2"	7x3 1/2"x1/2"	27" & 32"	Brackets 15"x18"x 1/2"	one p.s. 24" x 60"	18"	9'-6"
Forecastle Bulkhead ...	1/2"	3/8"	6x3 1/2"x3/8"	28"	None	25 1/2" x 63"	15 1/2"	8'-0"
Trunk, Aft ...								
Trunk, Forward ...								
Exposed Machinery Casings on Freeboard or Raised Quarter Decks ...	-	1/2"	7x3 1/2"x3/8"	28"	None	None		7'-6"
Exposed Machinery Casings on Superstructure Decks ...	1/2"	1/2"	7x3 1/2"x3/8"	28"	None	None	-	7'-3"
Machinery Casings within Superstructures not fitted with Class I Closing Appliances ...								
Deckhouses on Flush Deck Ships ...								

Particulars of Closing Appliances (state if capable of being manipulated from both sides).

Poop Bulkhead ...	None NO OPENINGS							
Raised Quarter Deck Bulkhead ...								
Bridge, After Bulkhead ...	2 hinged steel w.t. doors				Operated from both sides.			
Bridge, Forward Bulkhead ...	1	"	"	door (port side)	"	"	"	"
Forecastle Bulkhead ...	2 hinged " " doors				"	"	"	"
Exposed Machinery Casings on Freeboard or Raised Quarter Decks ...								
Exposed Machinery Casings on Superstructure Decks ...	1	"	"	door (port side)	"	"	"	"
Machinery Casings within Superstructures not fitted with Class I Closing Appliances ...								
Deckhouses on Flush Deck Ships ...								

PARTICULARS OF PROTECTION TO OPENINGS, ETC.

The following diagrams should be used to indicate the positions of cargo and coaling hatchways, gangway, cargo and coaling ports, ventilators, companionways, etc., which would affect the seaworthiness of the ship:—



Particulars of fiddley, funnel and ventilator coamings, engine room skylight and other openings in machinery casing tops and their means of closing:—

Fiddley, funnel, vent coamings and Engine Room Skylight strongly constructed of steel. Skylights fitted with hinged steel flaps with strong bulls-eye lights. Fiddley opening provided with hinged steel cover.

Particulars of Flush Bunker Scuttles:— One Portside Poop Deck

Particulars of Companionways:—

One companionway inside poop deckhouse port side giving access to poop space. (Deckhouse of steel with hinged steel w.t. doors).

Particulars of Ventilators in exposed positions on freeboard and superstructure destructure decks:—	None
---	------

Particulars of Air Pipes in exposed positions on freeboard, raised quarter, or supersks:—

<u>Freeboard Deck</u>	2	-	2 $\frac{1}{2}$ "	Dia.	"	16"	Fitted with wooden plugs.
	2	-	2 $\frac{1}{2}$ "	dia.	Height	40"	Fitted with screens and hinged steel covers.
	2	-	4 $\frac{1}{4}$ "	"	"	50"	Fitted with screens and hinged covers.
	2	-	4 $\frac{1}{4}$ "	"	"	35"	" " " " " "
	2	-	4 $\frac{1}{4}$ "	"	"	53"	" " " " " "
<u>Forecastle Dk.</u>	2	-	2 $\frac{1}{2}$ "	"	"	24"	Fitted with wooden plugs. ✓
<u>Poop Deck</u>	2	-	2 $\frac{1}{2}$ "	Dia.	"	16"	Fitted with wooden plugs. ✓

Particulars of Gangway Cargo and Coaling Ports:— **None.**

Particulars of Scuppers and Sanitary Discharge Pipes:—

Freeboard Deck - Fo'castle Space - 4 - 2" dia. scupper discharging through ship's side immediately below freeboard deck. ✓
10 - 6" dia. scupper discharging through ship's side immediately below freeboard deck. ✓

<u>Forecastle Deck</u>	- 2 -	6" dia.	scuppers	led	overboard	above	freeboard	deck.
<u>Poop Deck</u>	4 -	6" dia.	scuppers	led	overboard	above	freeboard	deck.
	3 -	2" dia.	scuppers	led	overboard	above	freeboard	deck.

4 Sanitary discharge pipes, one 2 $\frac{1}{2}$ " dia., one 3" and 2 - 4" dia. from toilets discharging through ship's side below freeboard deck and fitted with automatic non-return valves.

Particulars of Side Scuttles:—

<u>Forecastle Space</u>	- 3 port side and 3 starboard side 10" dia. brass side scuttles fitted with gun-metal dead lights. ✓
<u>Poop Space</u>	- 9 " " " 9 " " " " " side scuttles fitted with gun-metal dead lights. ✓
<u>Bridge Space</u>	- 3 port side and 3 starboard side 10" dia. brass side scuttles fitted with gun-metal dead lights. ✓

Vertical distance of Sill of lowest Side Scuttle above top of keel None below freeboard deck.

Particulars of Guard Rails:—

Freeboard Deck - Bulwark min. height 3'-6" with 7"x3½"x3/8" bulwark brackets.
Forecastle Deck - Bulwark min. height 3'-6" with 3½"x3½"x1/2" bulwark brackets.
Poop Deck - 2 steel rails - 37" high.

Particulars of Gangways, Lifelines, etc:—

Particulars of Freeing Arrangements.						
	Length of Bulwark	Height of Bulwark	Size of Freeing Ports	Number each side	Area each side	Rule area each side
After Well	94'6" ✓	42" min. ✓	26" x 55 min.	10 11	109 sq. ft. ✓	18.9 sq ft
Forward Well	97'0" ✓	42" min. ✓	Between Bulwark Brackets 26" x 55 min.	9-1/2	94 sq. ft. ✓	19.4 sq ft

State position of each freeing port { After Well:— 10' 0" 5' 0" 5' 0" 5' 0" 5' 0" 5' 0" 10' 3" 15' 0" 5' 0" 10' 0" → FORWARD (1)

(F. and A. position and height above deck edge) { Forward Well:— 23' 0" 10' 0" 4' 0" 5' 0" 5' 0" 5' 0" 10' 0" 15' 0" 5' 0" 10' 0" → FORWARD

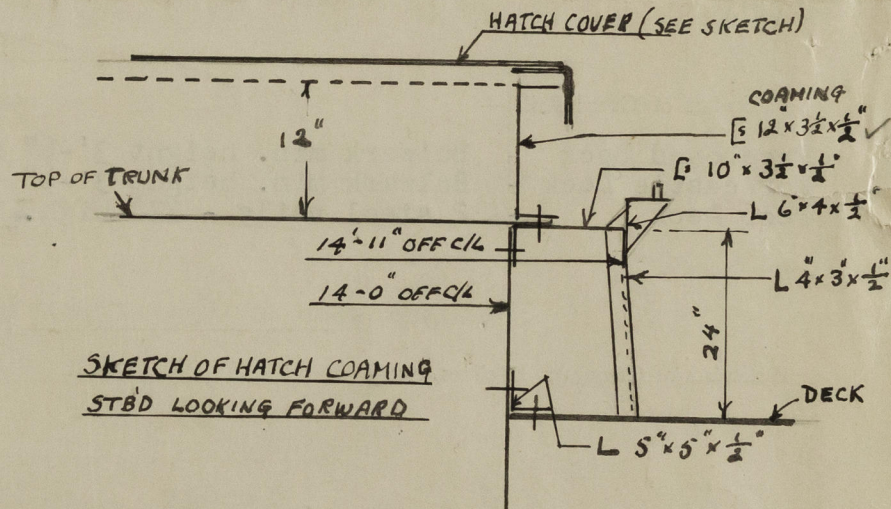
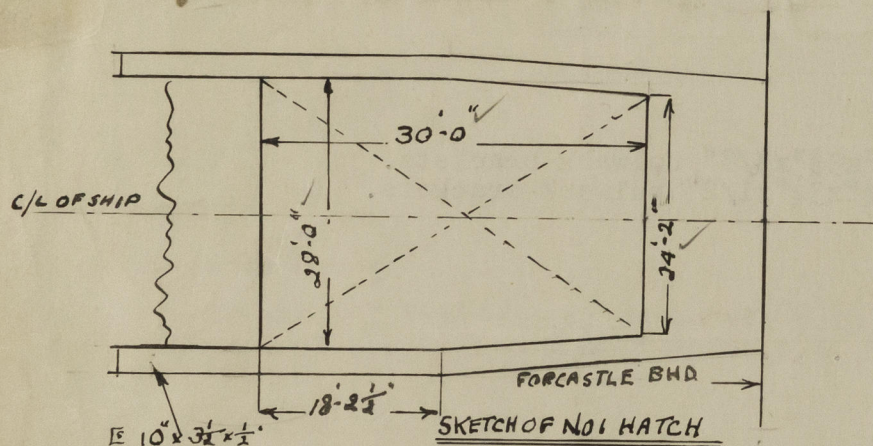
State whether the freeing ports are fitted with shutters, bars, or rails, and give particulars of such:— 3 - 1" horizontal steel bars.

Additional area where sheer is less than standard.

PARTICULARS OF PROTECTION TO OPENINGS, ETC.

HATCHWAYS ON FREEBOARD AND SUPERSTRUCTURE DECKS.									
Description of Hatchway		No. 1	No. 2	No. 3	No. 4				
Dimensions of Hatchway		See sketch below	30" x 28"	30" x 28"	30" x 28"				
COAMINGS	Height above Deck	Trunk	24" above deck	and coaming 12" above trunk.					
	Thickness { Sides ... Ends ...								
	Stiffeners								
	Brackets, Stays	10" x 3 1/2" x 1/2" ea.	side for full length of trunk.						
HATCH BEAMS	Number ... Spacing ... Scantling and Sketch			None					
	Bearing Surface								
FORE AND AFTERS	Number ... Spacing ... Unsupported Lengths ... Scantling and Sketch	11 30'-0"							
	Bearing Surface								
HATCH COVERS	Material	Steel							
	Thickness	3/8							
	How fitted								
	Bearing Surface		Steel Covers hinged at mid length for each hatch 3/8" plating with 11 - 8" x 4" x 7/16" stiffeners.						
Spacing of Cleats		27"							
Number of Tarpaulins									
Spacing of 1" Dia. Securing Bolts		39" Fore and Aft.	39" Port and Starboard.						
*Are wood fore and afters steel shod at all bearing surfaces?		None							
Are battens and wedges efficient and in good condition?		Yes							
Are tarpaulins in good condition and in accordance with rule requirements?		None							
Are lashings provided in accordance with rule requirements?		"							

Particulars of any special features:—



Endorsement at first survey and at surveys for renewal of Certificate:—

The fittings and appliances are in accordance with the particulars shown on this form (or as now modified) and are in good condition.