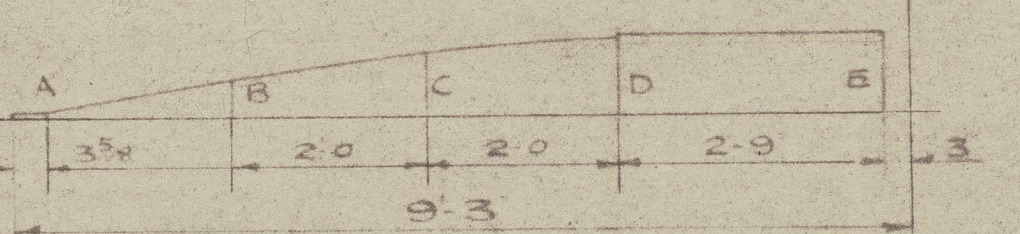


Nos 1198 & 1199.
**STERNFRAME AND
RUDDER PLAN**

SCALE:- 1/2" = 1 FOOT
TO LLOYDS TESTS AND REQUIREMENTS

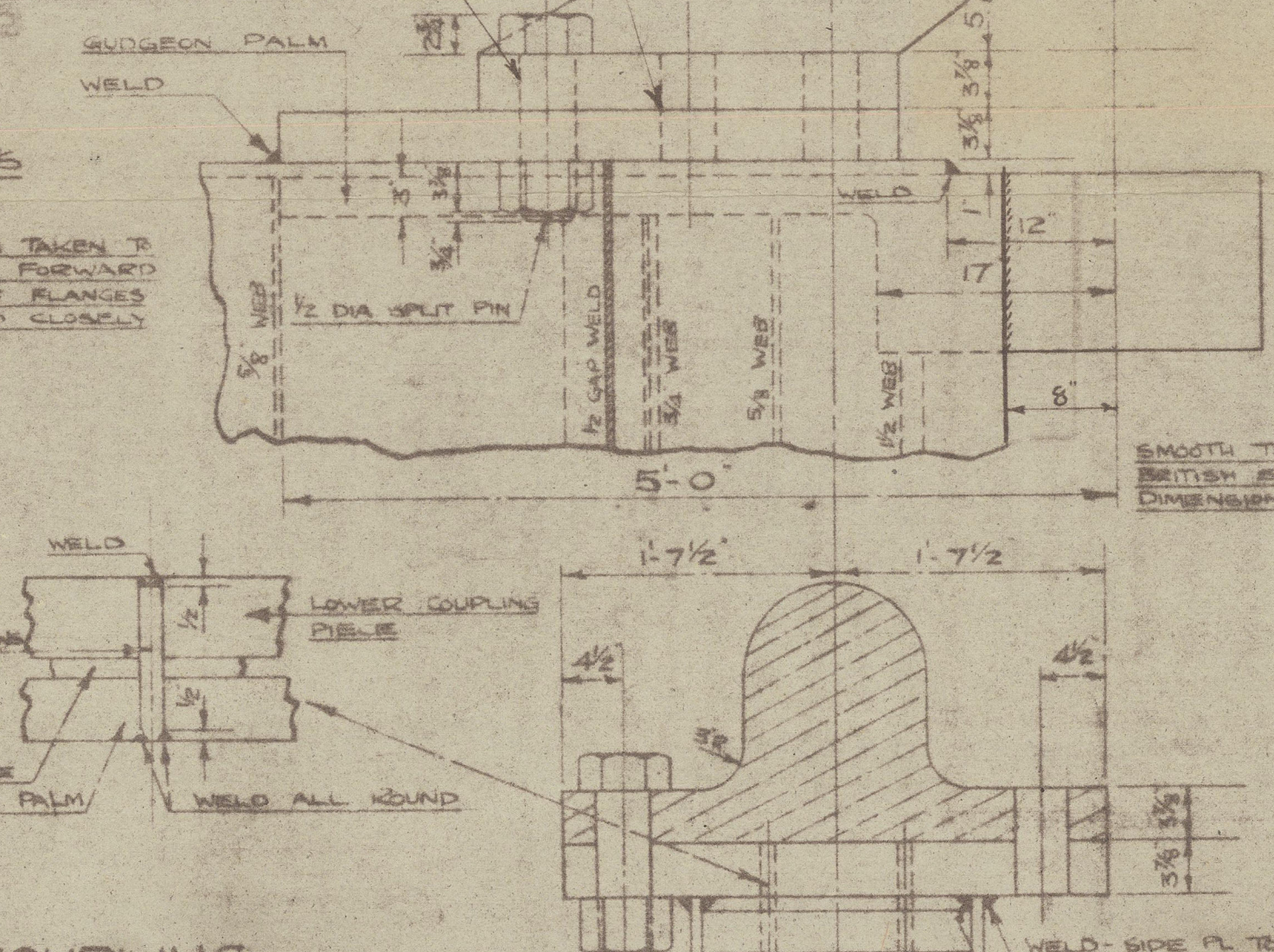
23 NOV 1913



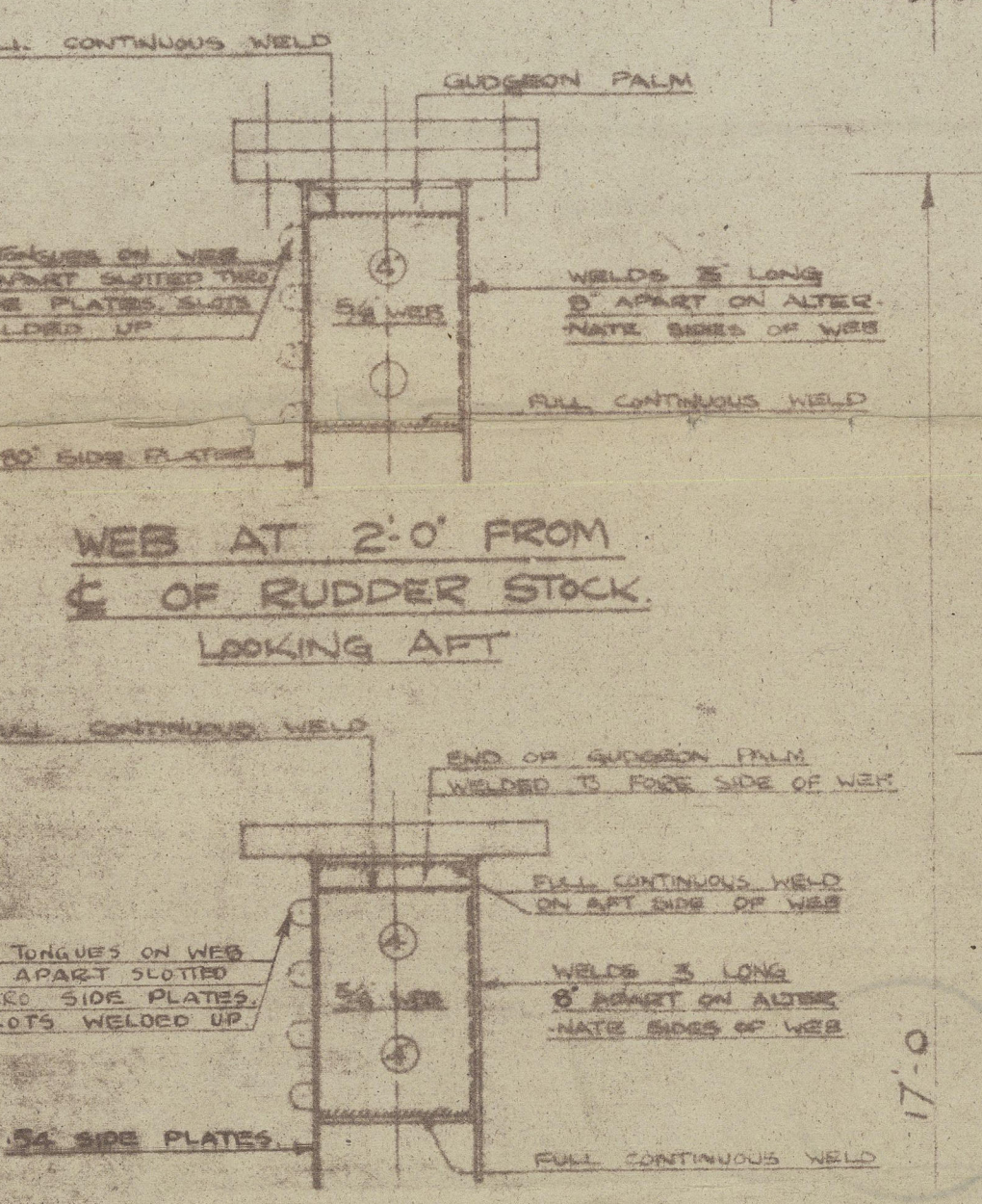
RUDDER OFFSETS
TO OUTSIDE OF PLATING

SECTION	A	B	C	D	E
OFFSET	54	43	8	10 1/2	10 1/2

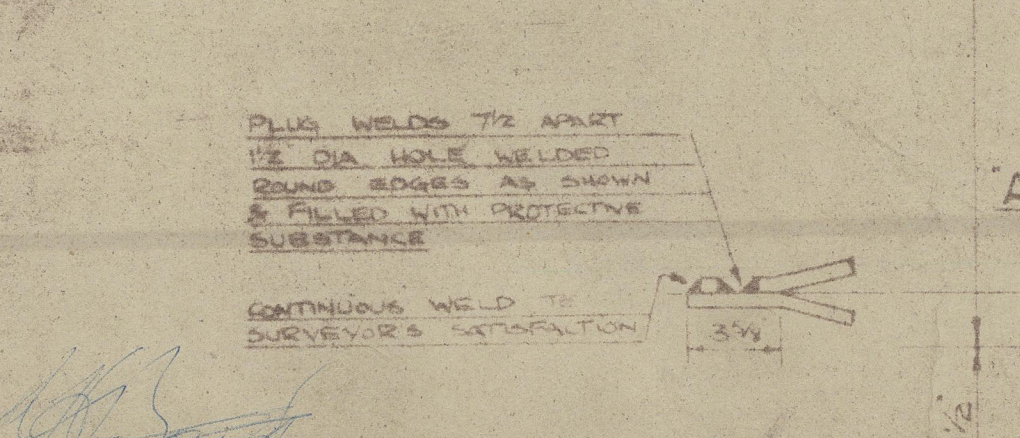
BOTH PLATES OF COUPLING LIFT 1/2 THICKNESS SHOWN
IN PLAN FOR TAPING OF RIVETS. GIVE HOLES IN
PLATE 1/4" DIA. IN WAY OF TAPING. GIVE
HOLES 1/4" DIA. IN WAY OF TAPING. GIVE
HOLES 1/4" DIA. IN WAY OF TAPING.



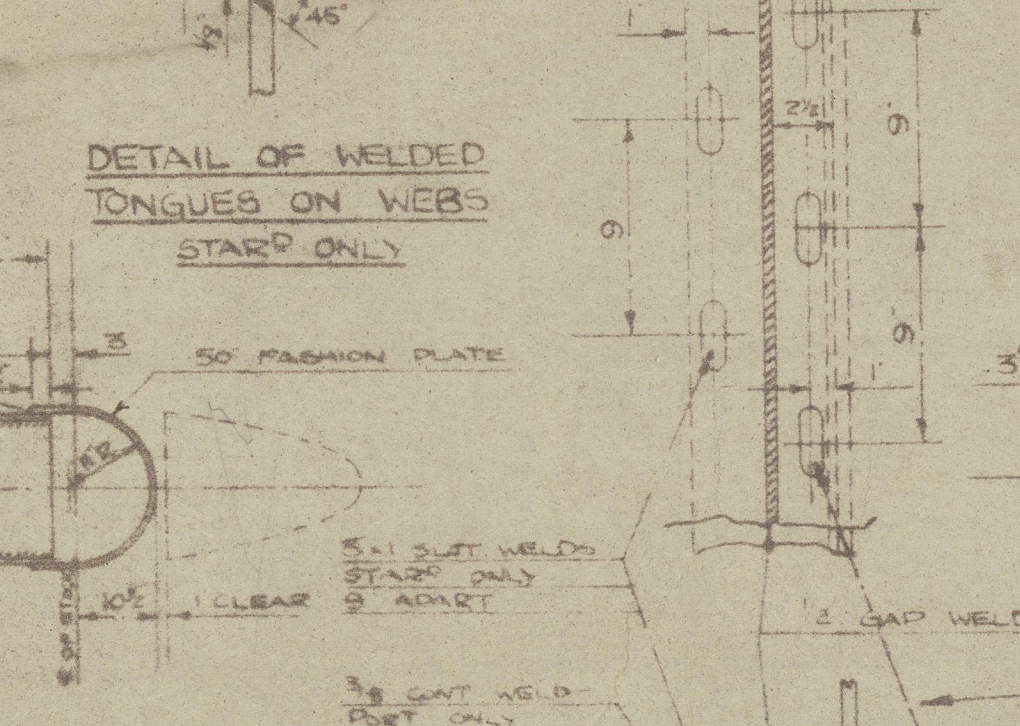
DETAILS OF RUDDER COUPLING
SCALE:- 1" = 1 FOOT



WEB AT 2'0" FROM
C OF RUDDER STOCK
LOOKING AFT



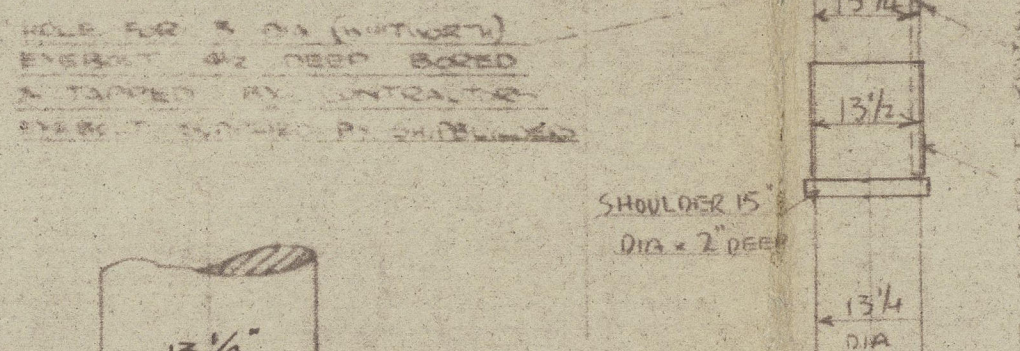
WEB AT 5'0" FROM
C OF RUDDER STOCK
LOOKING AFT



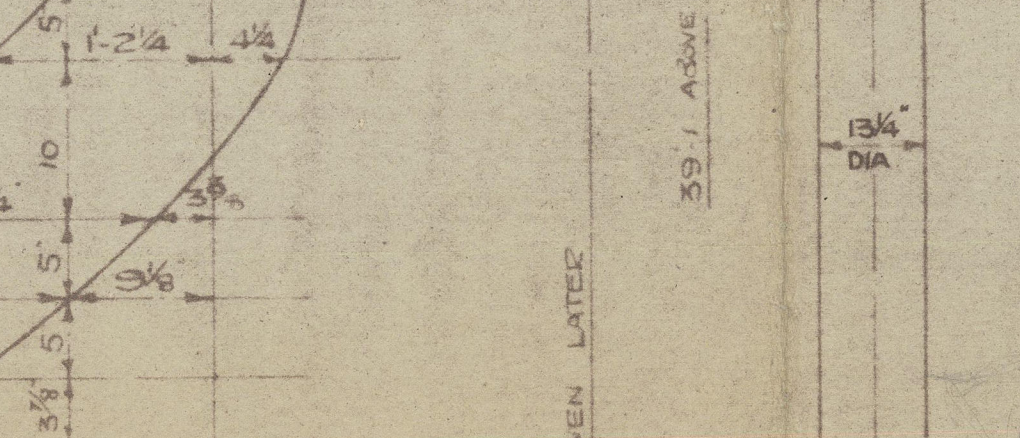
DETAIL OF WELDED
TONGUE ON WEB
STAMP ONLY



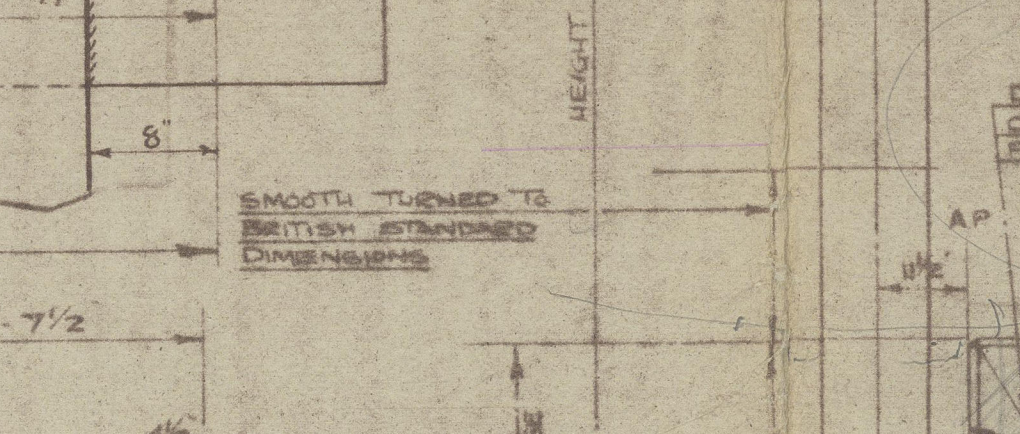
PLAN THRU RUDDER IN WAY
OF HORIZONTAL WEB



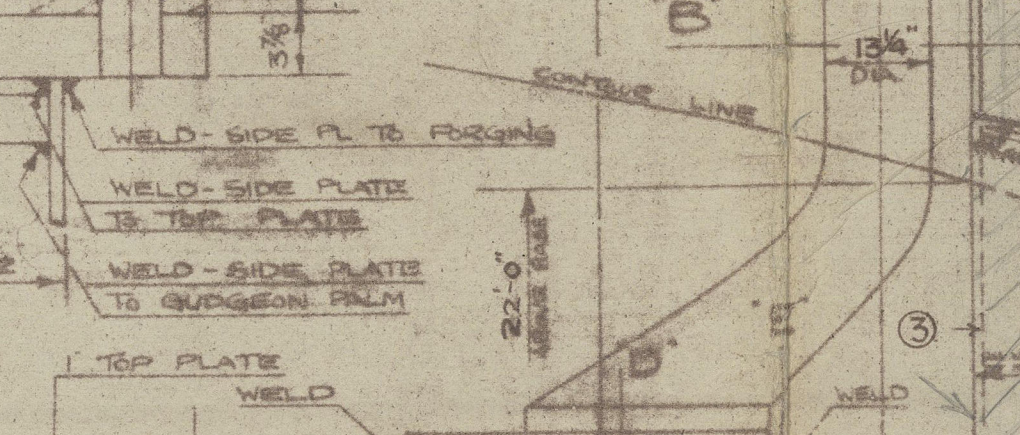
RUDDER STOCK TO BE
INCREASED 1/4" IN WAY OF TILLER
TO FACILITATE REMOVAL



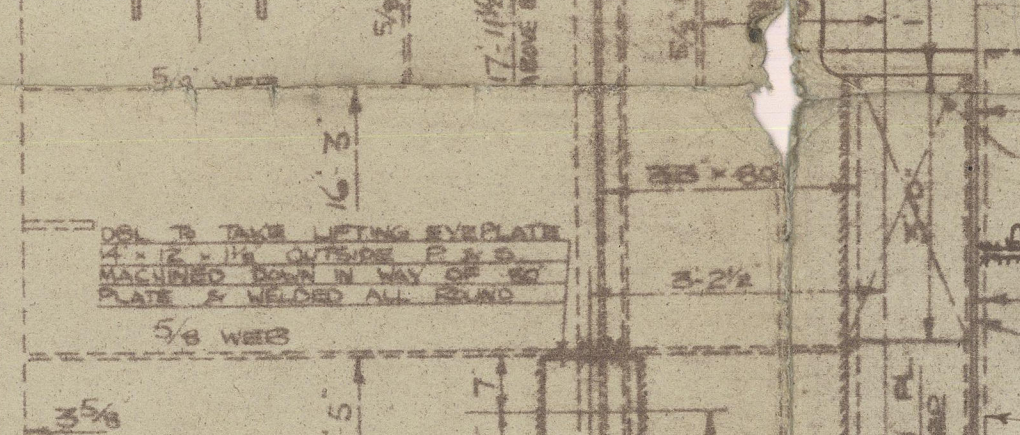
RUDDER STOCK TO BE
INCREASED 1/4" IN WAY OF TILLER
TO FACILITATE REMOVAL



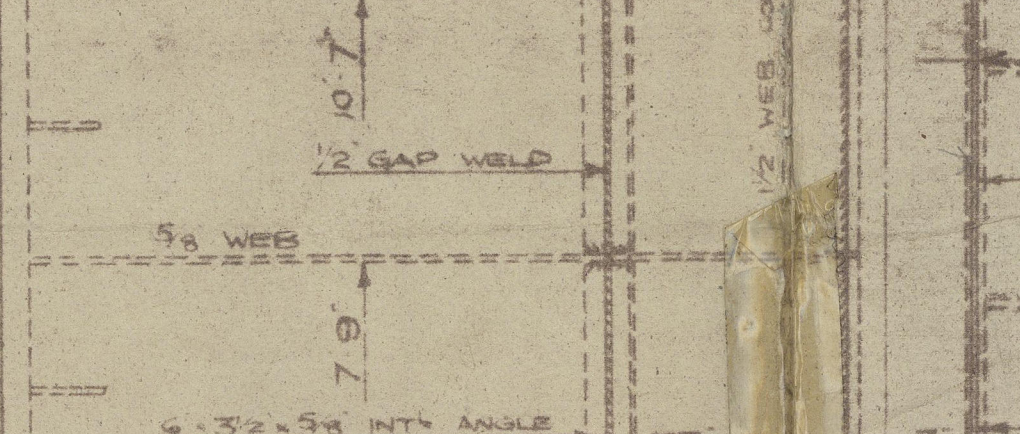
RUDDER STOCK TO BE
INCREASED 1/4" IN WAY OF TILLER
TO FACILITATE REMOVAL



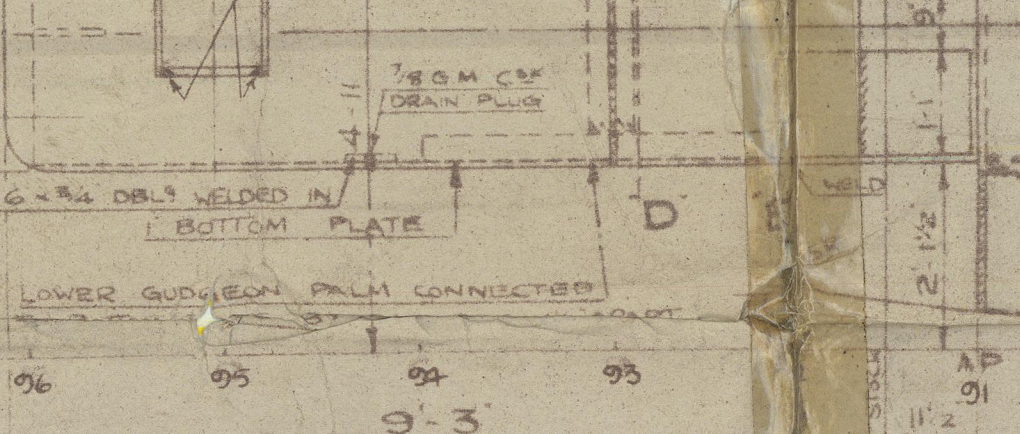
RUDDER STOCK TO BE
INCREASED 1/4" IN WAY OF TILLER
TO FACILITATE REMOVAL



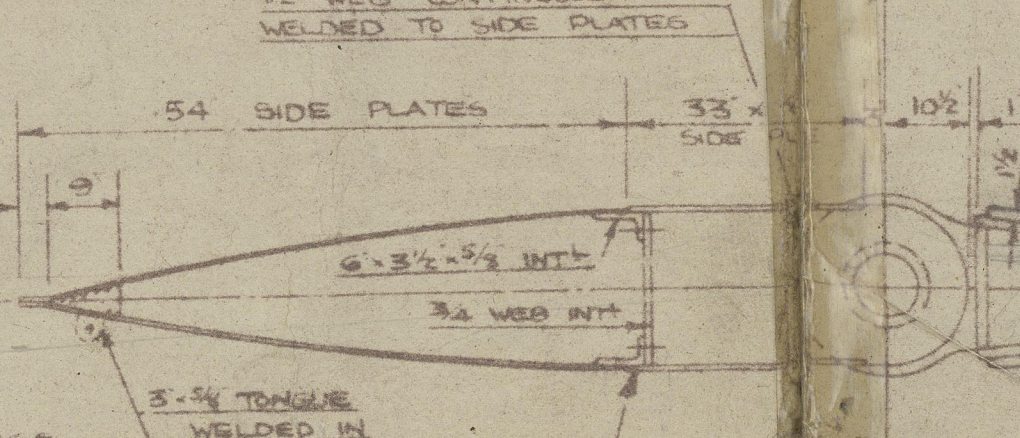
RUDDER STOCK TO BE
INCREASED 1/4" IN WAY OF TILLER
TO FACILITATE REMOVAL



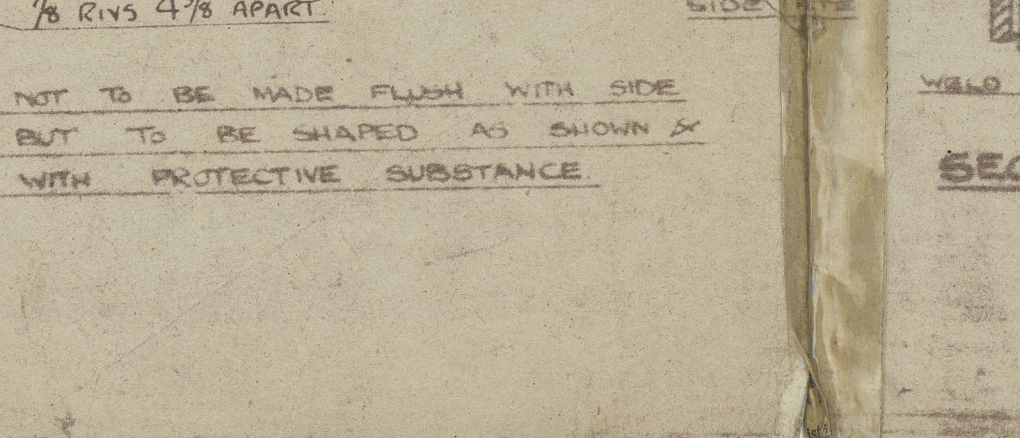
RUDDER STOCK TO BE
INCREASED 1/4" IN WAY OF TILLER
TO FACILITATE REMOVAL



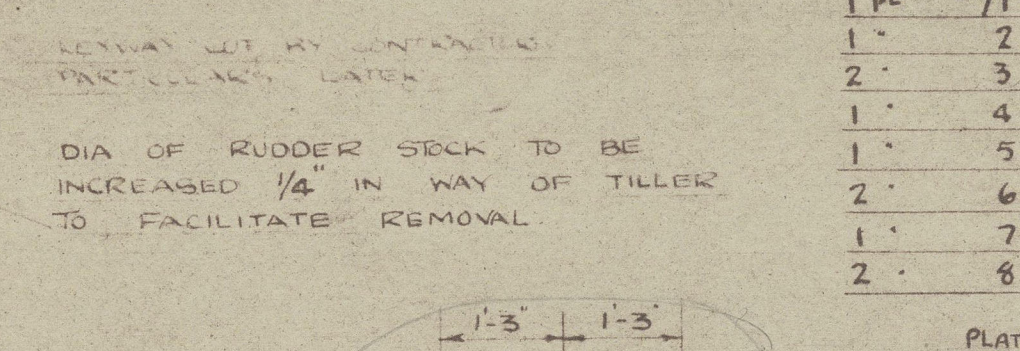
RUDDER STOCK TO BE
INCREASED 1/4" IN WAY OF TILLER
TO FACILITATE REMOVAL



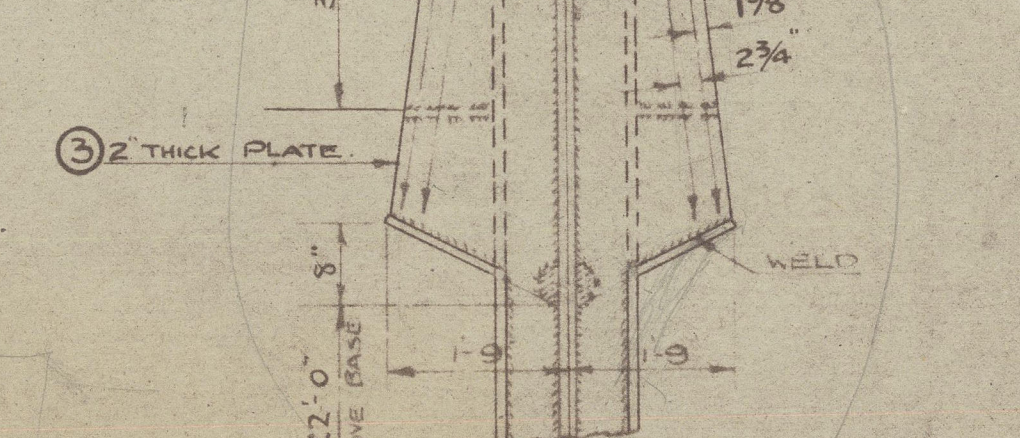
RUDDER STOCK TO BE
INCREASED 1/4" IN WAY OF TILLER
TO FACILITATE REMOVAL



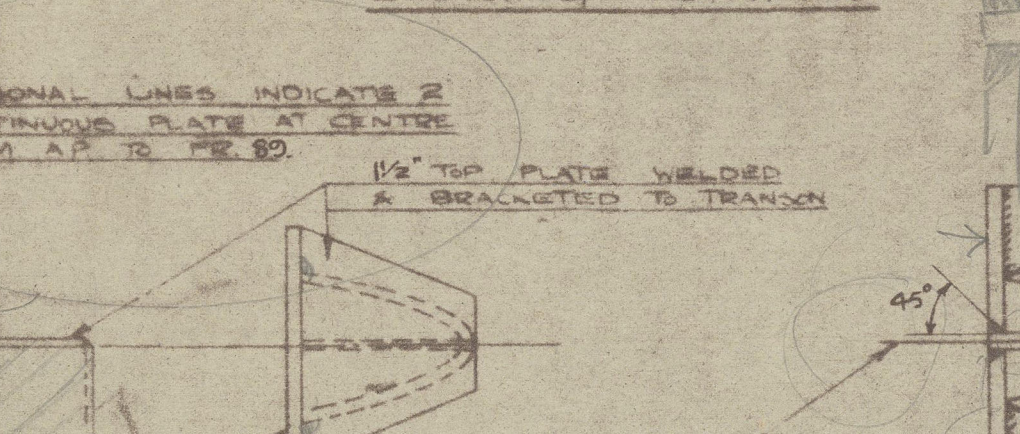
RUDDER STOCK TO BE
INCREASED 1/4" IN WAY OF TILLER
TO FACILITATE REMOVAL



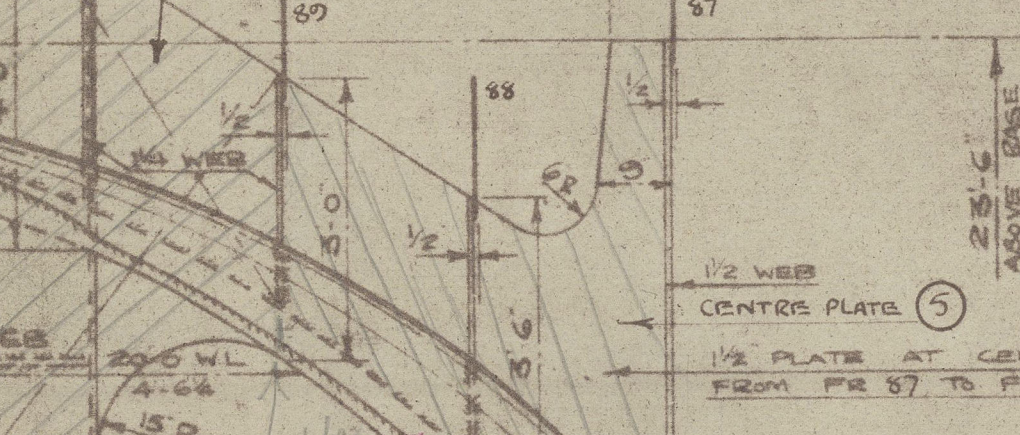
RUDDER STOCK TO BE
INCREASED 1/4" IN WAY OF TILLER
TO FACILITATE REMOVAL



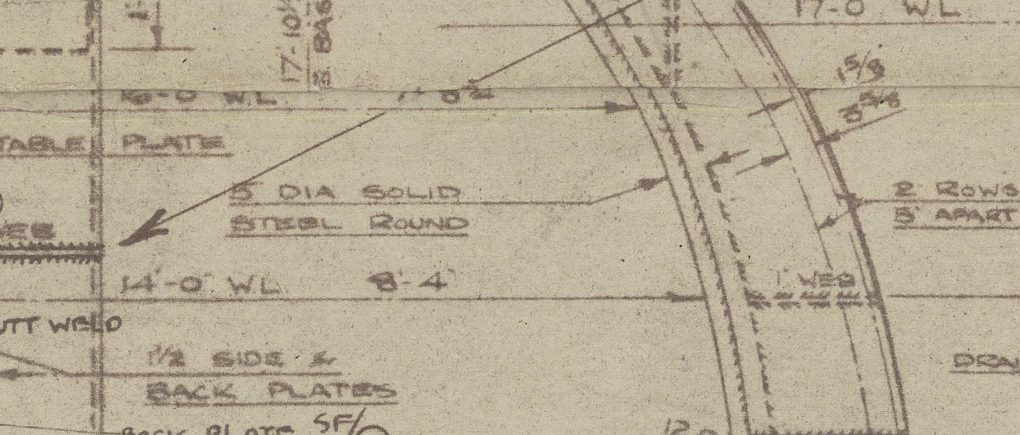
RUDDER STOCK TO BE
INCREASED 1/4" IN WAY OF TILLER
TO FACILITATE REMOVAL



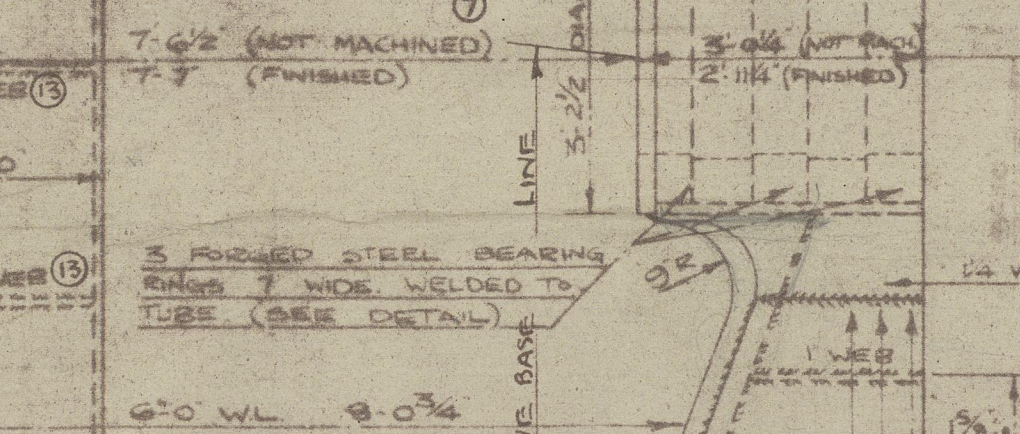
RUDDER STOCK TO BE
INCREASED 1/4" IN WAY OF TILLER
TO FACILITATE REMOVAL



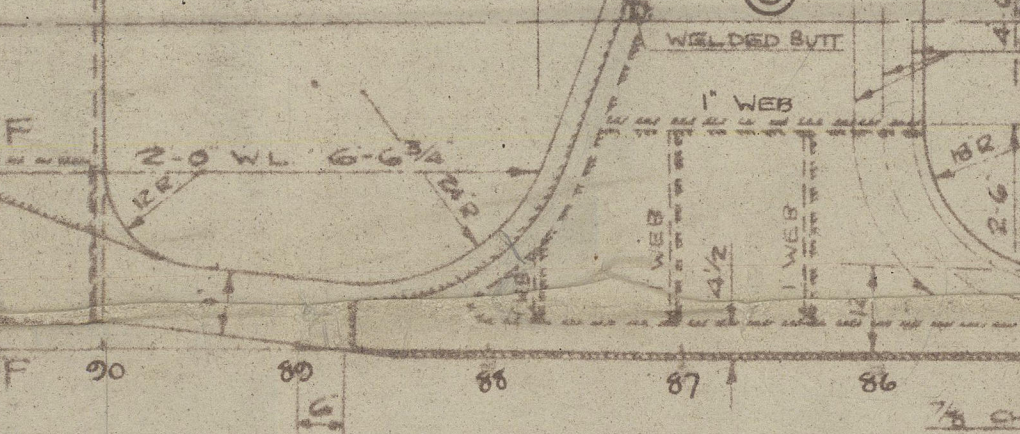
RUDDER STOCK TO BE
INCREASED 1/4" IN WAY OF TILLER
TO FACILITATE REMOVAL



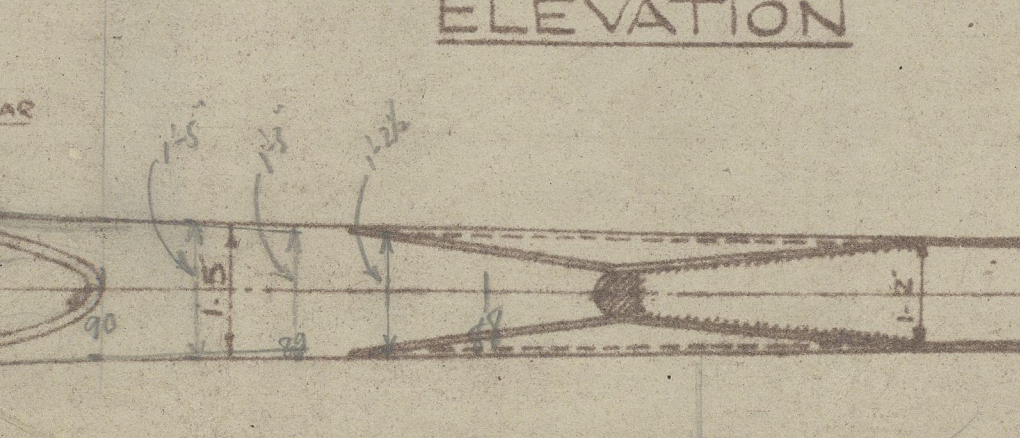
RUDDER STOCK TO BE
INCREASED 1/4" IN WAY OF TILLER
TO FACILITATE REMOVAL



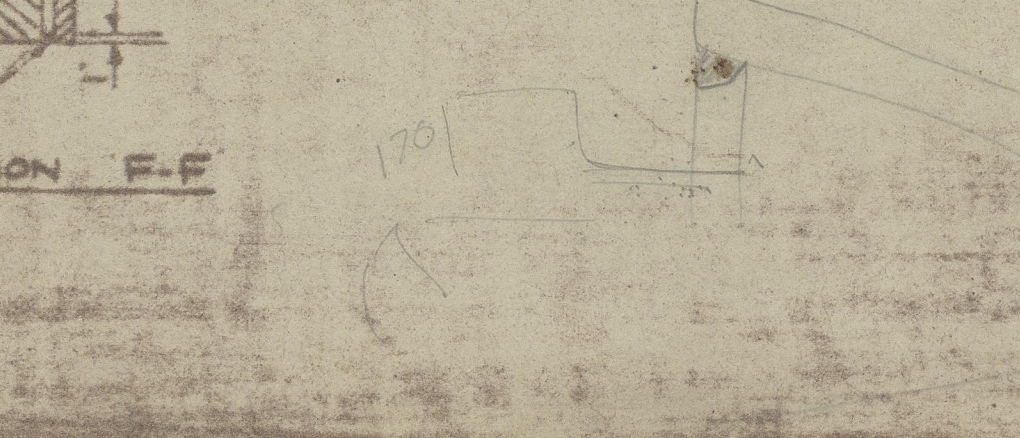
RUDDER STOCK TO BE
INCREASED 1/4" IN WAY OF TILLER
TO FACILITATE REMOVAL



RUDDER STOCK TO BE
INCREASED 1/4" IN WAY OF TILLER
TO FACILITATE REMOVAL



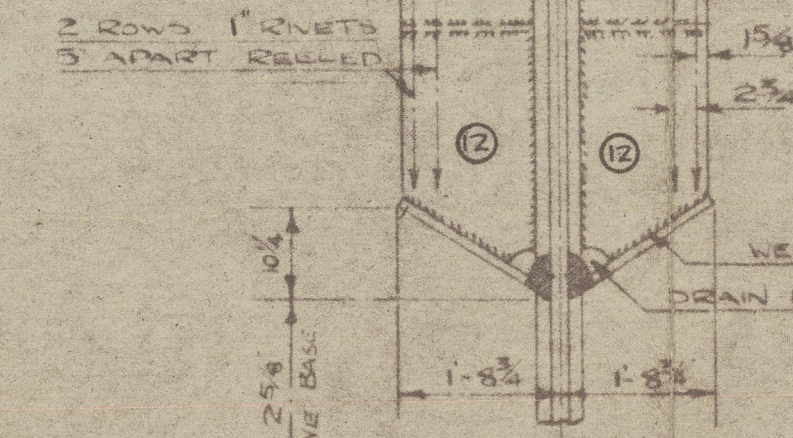
RUDDER STOCK TO BE
INCREASED 1/4" IN WAY OF TILLER
TO FACILITATE REMOVAL



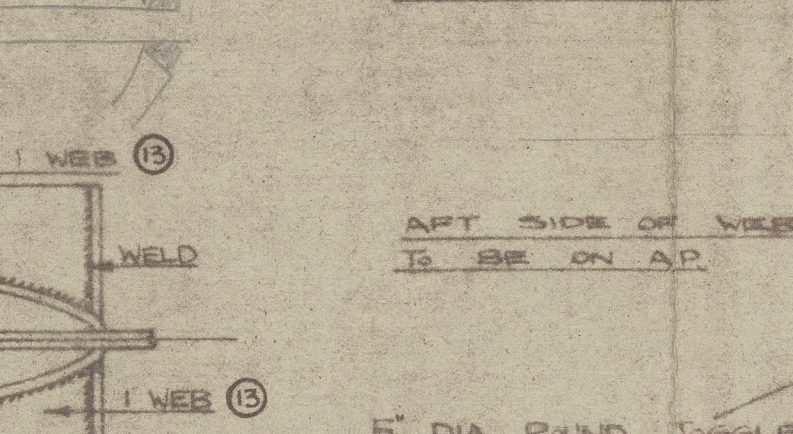
RUDDER STOCK TO BE
INCREASED 1/4" IN WAY OF TILLER
TO FACILITATE REMOVAL

- LIST OF PLATES
- | PL | QTY | SIZE | REMARKS |
|----|-----|----------------------|-------------------|
| 1 | 2 | 14-11 x 16 1/2 x 1/2 | RUDDER POST SIZES |
| 2 | 3 | 9-7 x 16 1/2 x 1/2 | BANK PL |
| 3 | 3 | 9-7 x 16 1/2 x 1/2 | CENTER PL |
| 4 | 3 | 9-7 x 16 1/2 x 1/2 | TOP PL |
| 5 | 3 | 9-7 x 16 1/2 x 1/2 | BOTTOM PL |
| 6 | 3 | 9-7 x 16 1/2 x 1/2 | WRAPPER PLATES |
| 7 | 3 | 9-7 x 16 1/2 x 1/2 | WRAPPER PLATES |
| 8 | 3 | 9-7 x 16 1/2 x 1/2 | WRAPPER PLATES |

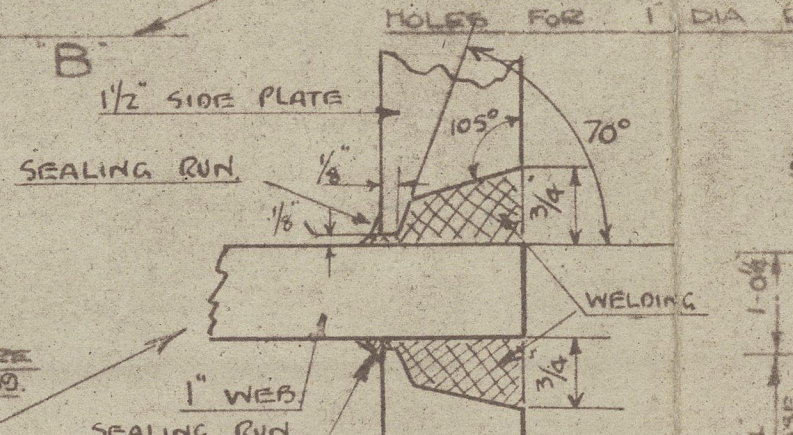
LIST OF PLATES



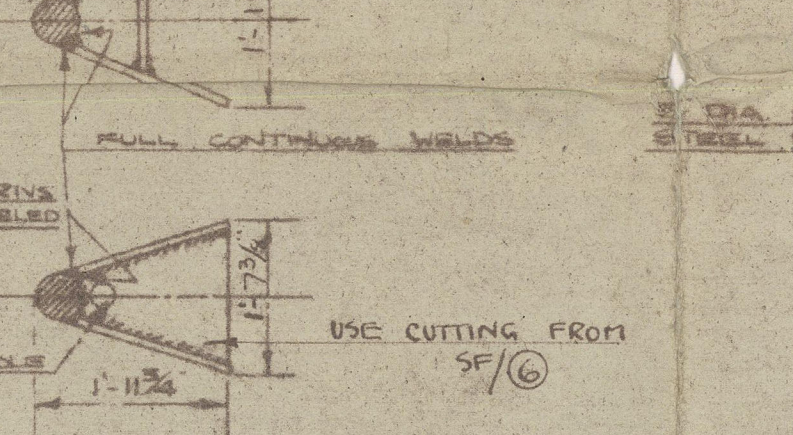
RUDDER STOCK TO BE
INCREASED 1/4" IN WAY OF TILLER
TO FACILITATE REMOVAL



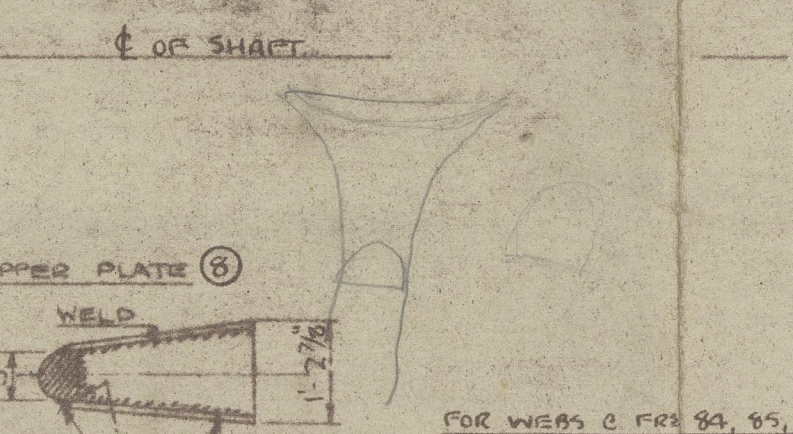
RUDDER STOCK TO BE
INCREASED 1/4" IN WAY OF TILLER
TO FACILITATE REMOVAL



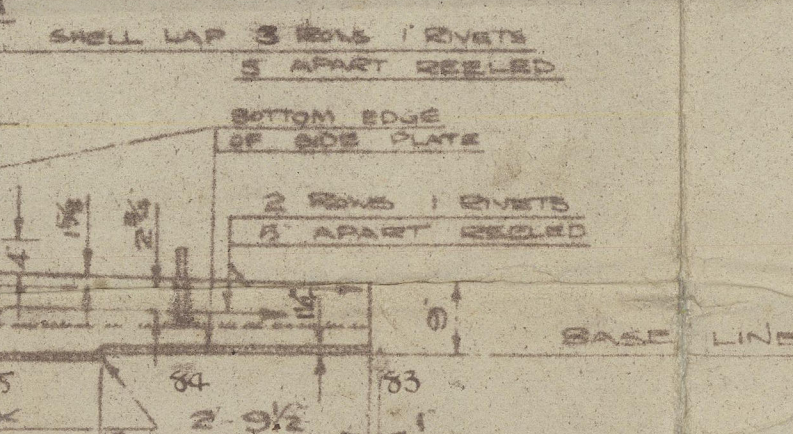
RUDDER STOCK TO BE
INCREASED 1/4" IN WAY OF TILLER
TO FACILITATE REMOVAL



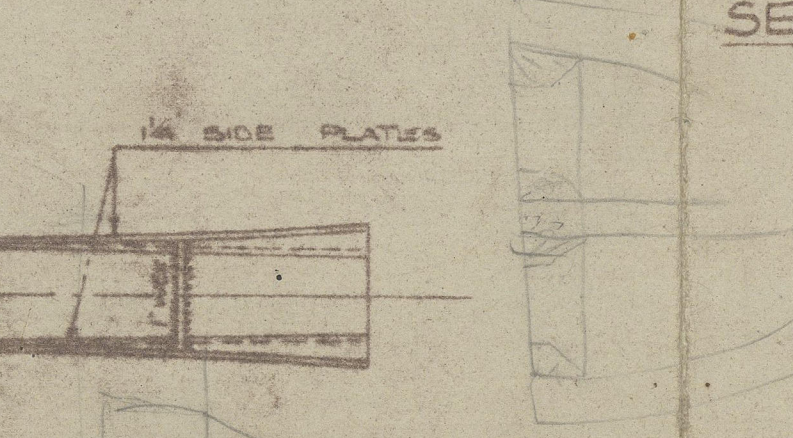
RUDDER STOCK TO BE
INCREASED 1/4" IN WAY OF TILLER
TO FACILITATE REMOVAL



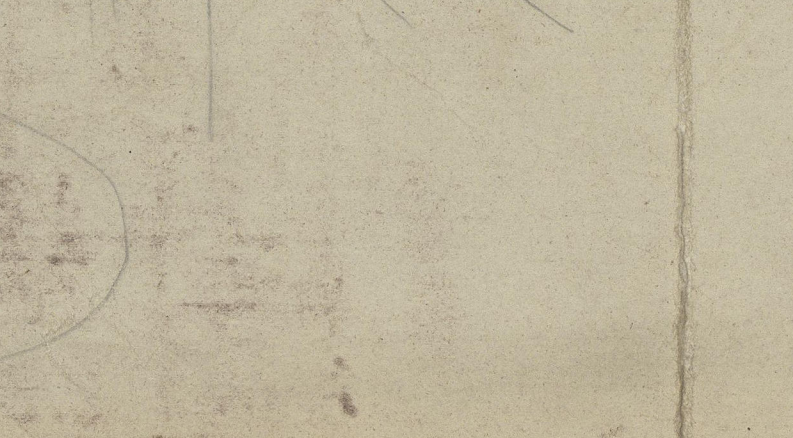
RUDDER STOCK TO BE
INCREASED 1/4" IN WAY OF TILLER
TO FACILITATE REMOVAL



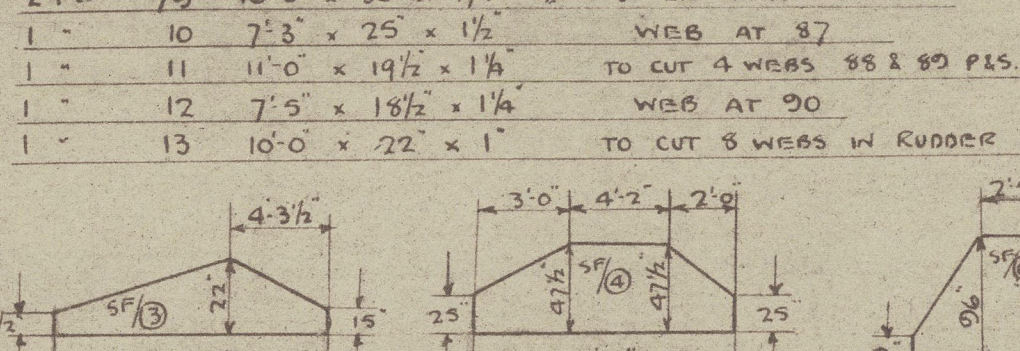
RUDDER STOCK TO BE
INCREASED 1/4" IN WAY OF TILLER
TO FACILITATE REMOVAL



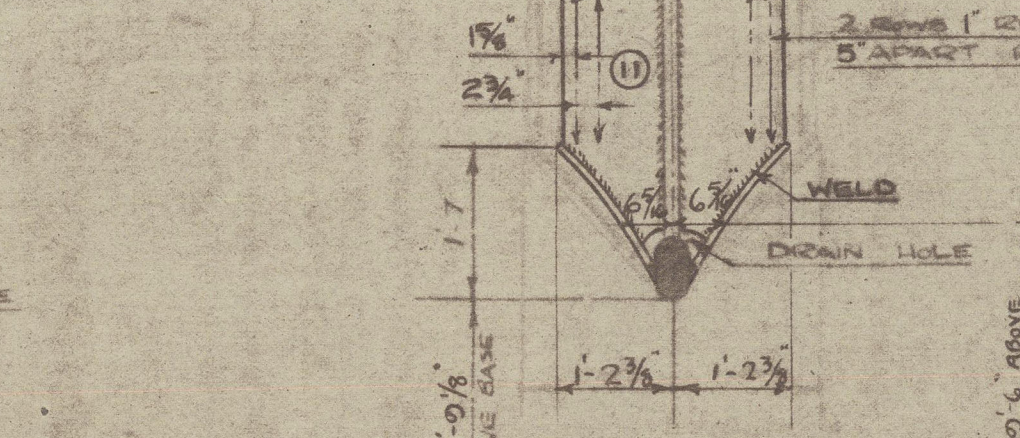
RUDDER STOCK TO BE
INCREASED 1/4" IN WAY OF TILLER
TO FACILITATE REMOVAL



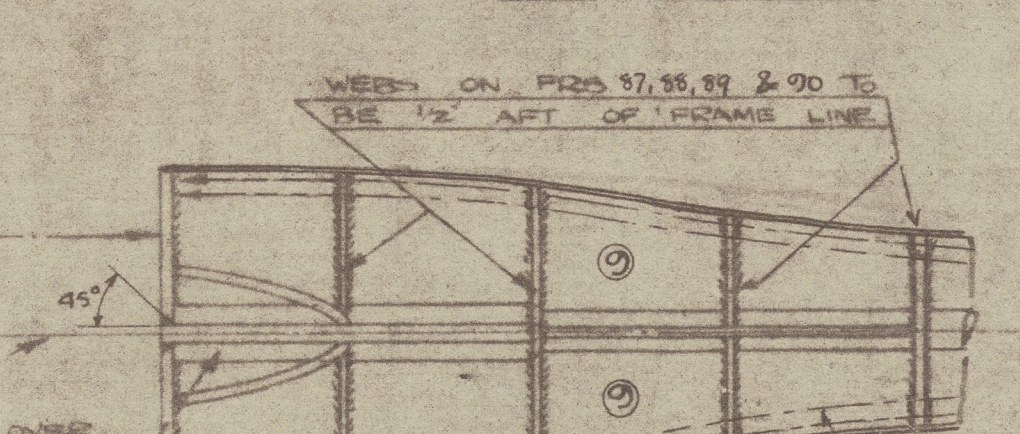
RUDDER STOCK TO BE
INCREASED 1/4" IN WAY OF TILLER
TO FACILITATE REMOVAL



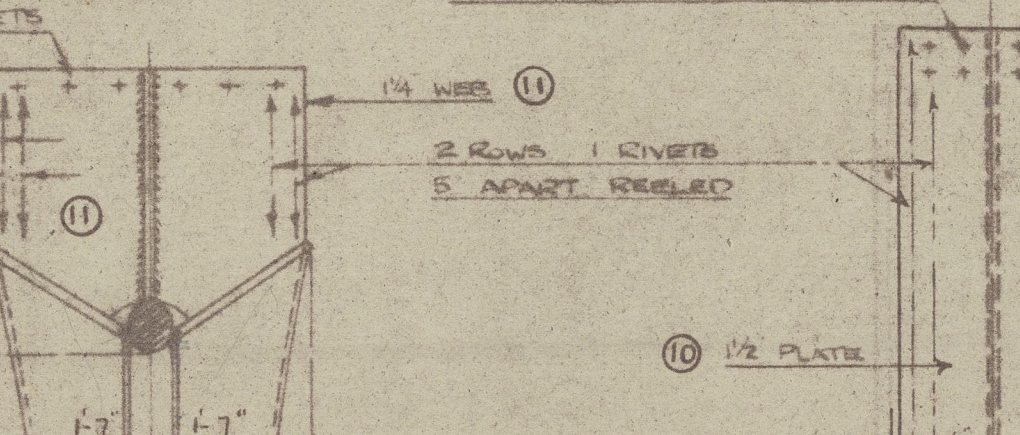
RUDDER STOCK TO BE
INCREASED 1/4" IN WAY OF TILLER
TO FACILITATE REMOVAL



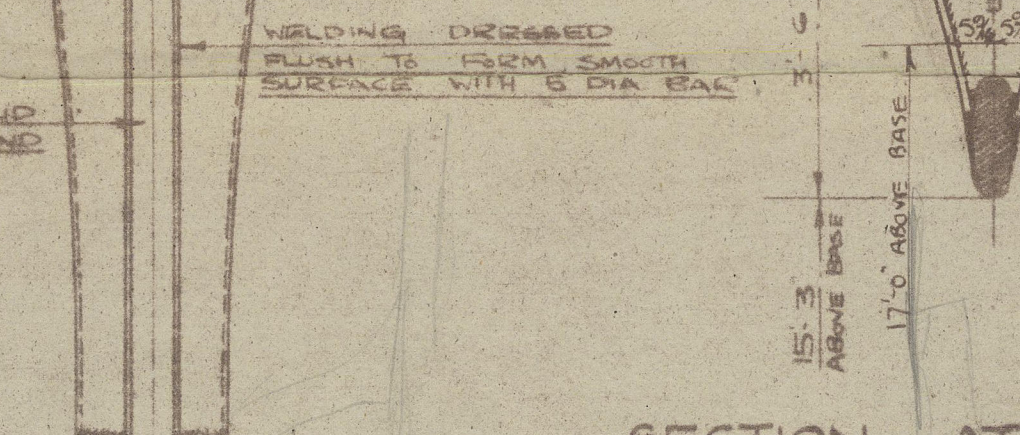
RUDDER STOCK TO BE
INCREASED 1/4" IN WAY OF TILLER
TO FACILITATE REMOVAL



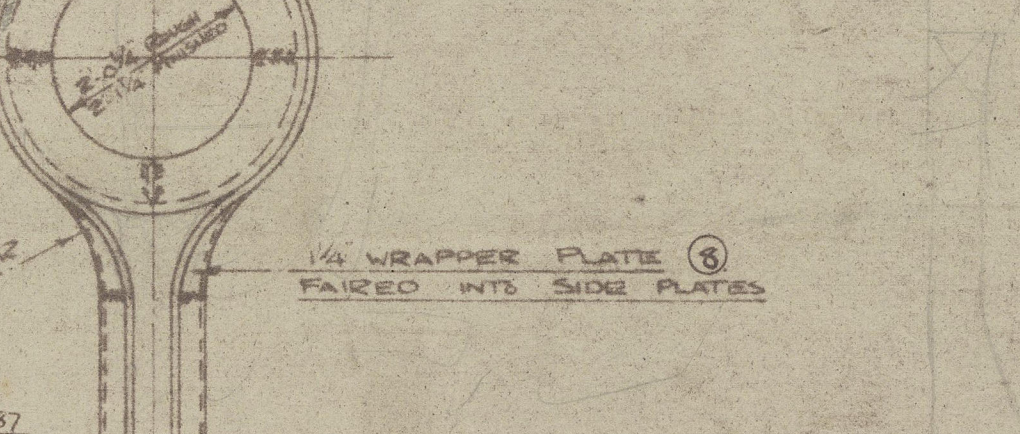
RUDDER STOCK TO BE
INCREASED 1/4" IN WAY OF TILLER
TO FACILITATE REMOVAL



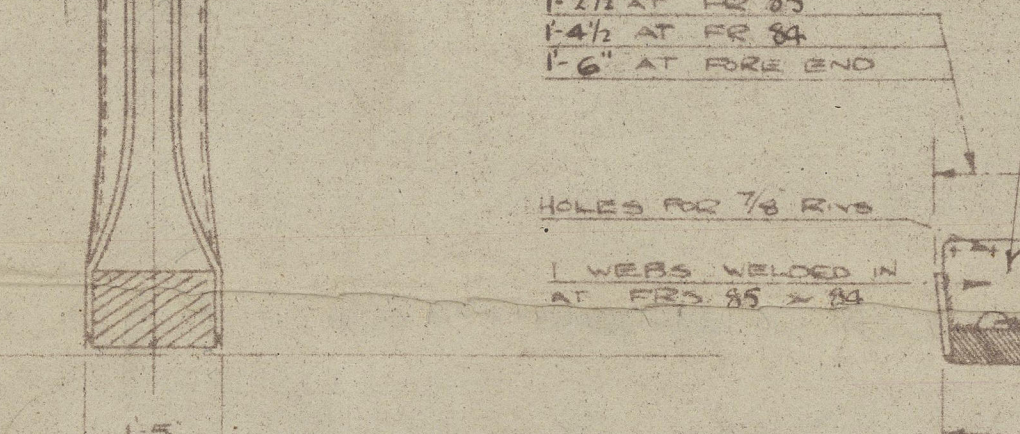
RUDDER STOCK TO BE
INCREASED 1/4" IN WAY OF TILLER
TO FACILITATE REMOVAL



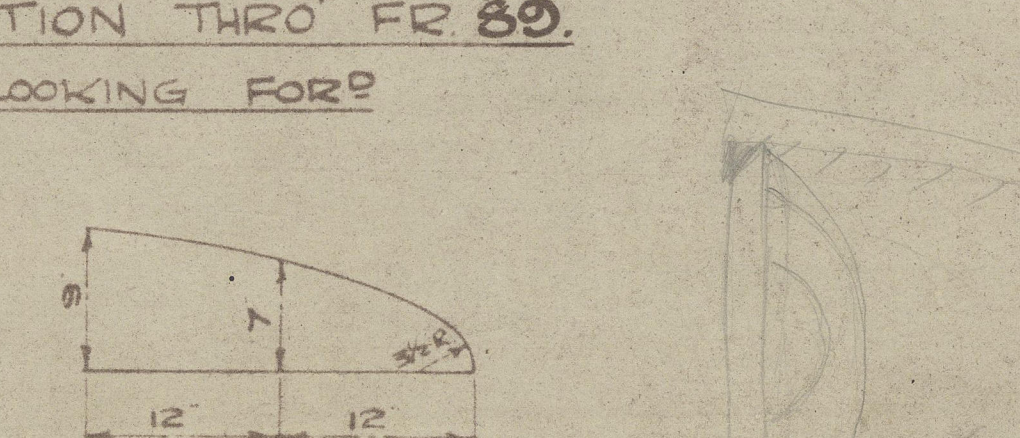
RUDDER STOCK TO BE
INCREASED 1/4" IN WAY OF TILLER
TO FACILITATE REMOVAL



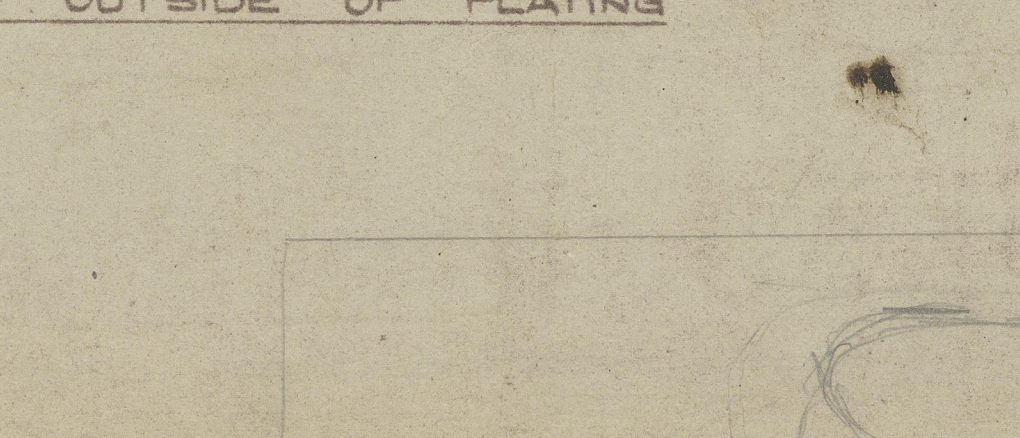
RUDDER STOCK TO BE
INCREASED 1/4" IN WAY OF TILLER
TO FACILITATE REMOVAL



RUDDER STOCK TO BE
INCREASED 1/4" IN WAY OF TILLER
TO FACILITATE REMOVAL



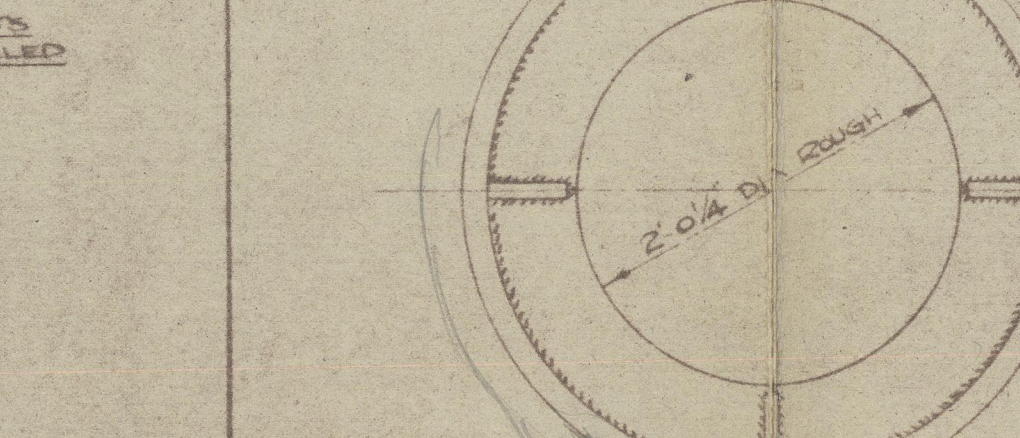
RUDDER STOCK TO BE
INCREASED 1/4" IN WAY OF TILLER
TO FACILITATE REMOVAL



RUDDER STOCK TO BE
INCREASED 1/4" IN WAY OF TILLER
TO FACILITATE REMOVAL



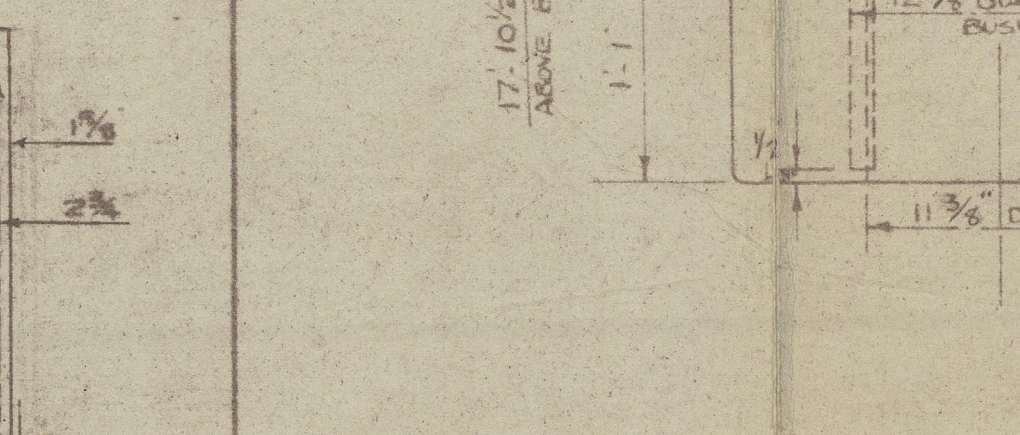
RUDDER STOCK TO BE
INCREASED 1/4" IN WAY OF TILLER
TO FACILITATE REMOVAL



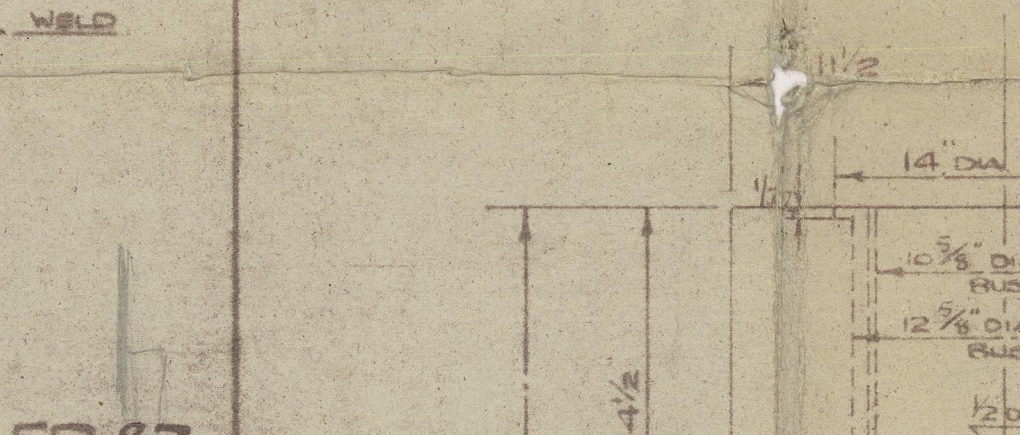
RUDDER STOCK TO BE
INCREASED 1/4" IN WAY OF TILLER
TO FACILITATE REMOVAL



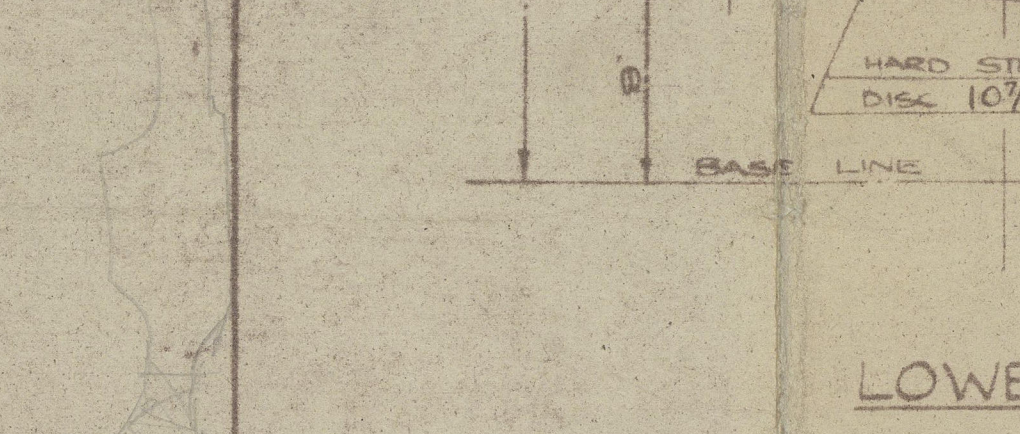
RUDDER STOCK TO BE
INCREASED 1/4" IN WAY OF TILLER
TO FACILITATE REMOVAL



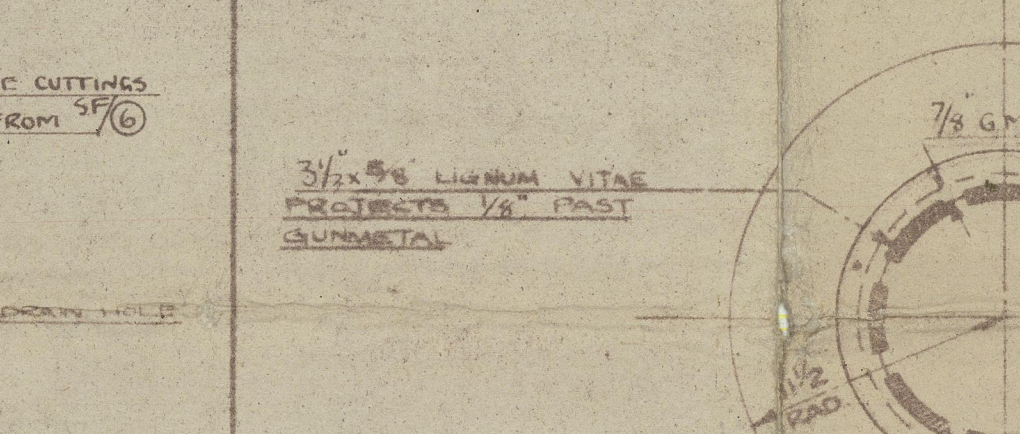
RUDDER STOCK TO BE
INCREASED 1/4" IN WAY OF TILLER
TO FACILITATE REMOVAL



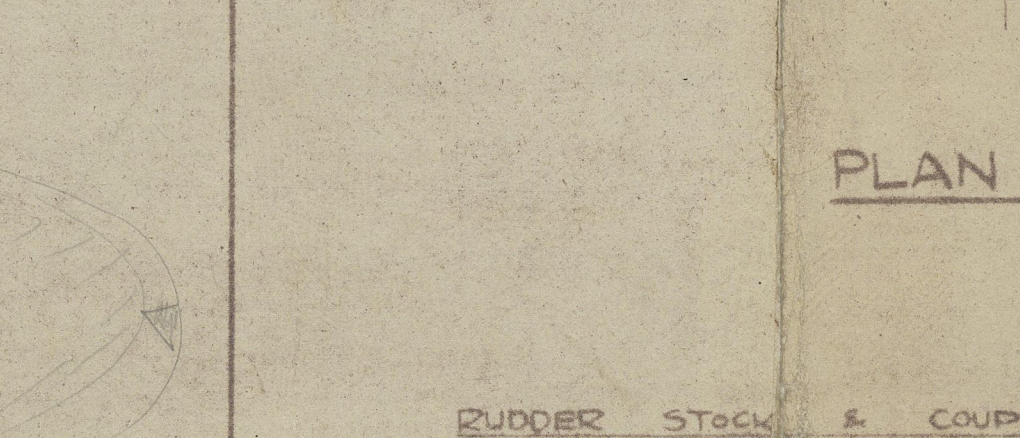
RUDDER STOCK TO BE
INCREASED 1/4" IN WAY OF TILLER
TO FACILITATE REMOVAL



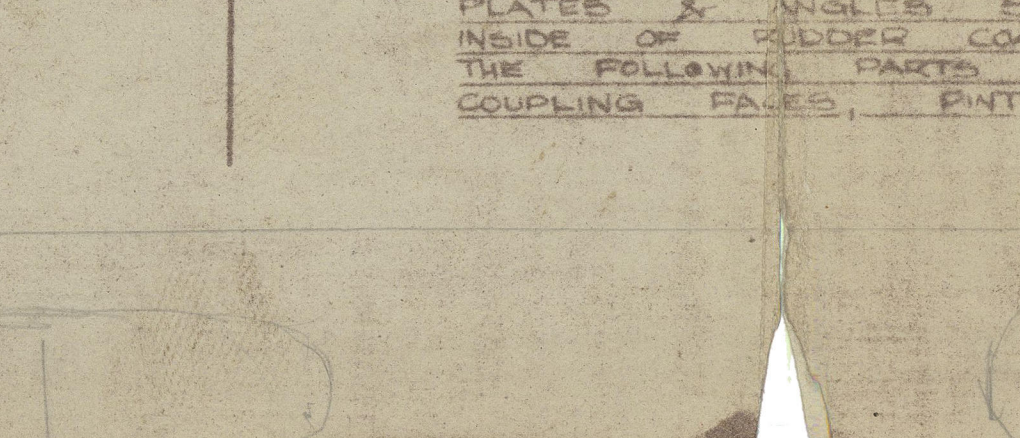
RUDDER STOCK TO BE
INCREASED 1/4" IN WAY OF TILLER
TO FACILITATE REMOVAL



RUDDER STOCK TO BE
INCREASED 1/4" IN WAY OF TILLER
TO FACILITATE REMOVAL



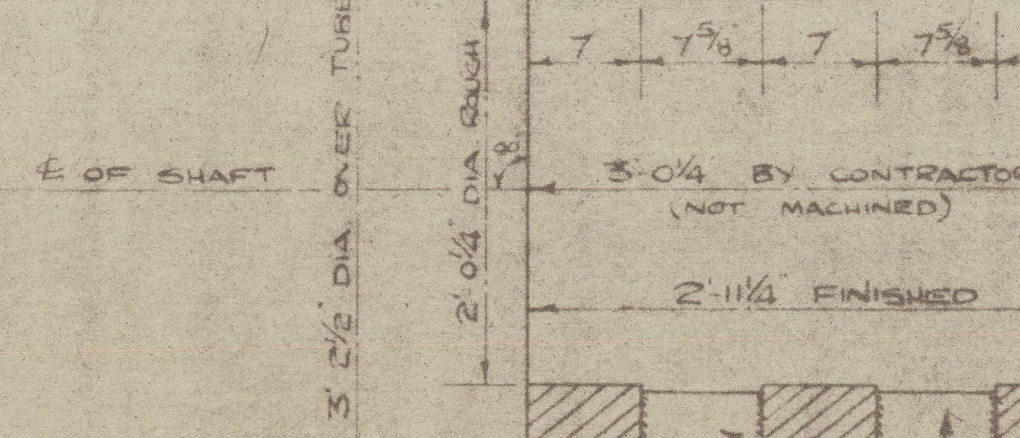
RUDDER STOCK TO BE
INCREASED 1/4" IN WAY OF TILLER
TO FACILITATE REMOVAL



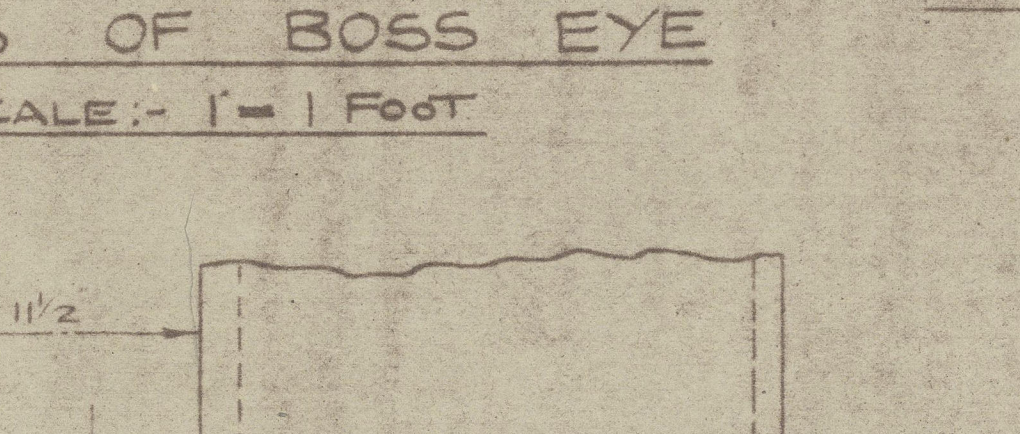
RUDDER STOCK TO BE
INCREASED 1/4" IN WAY OF TILLER
TO FACILITATE REMOVAL



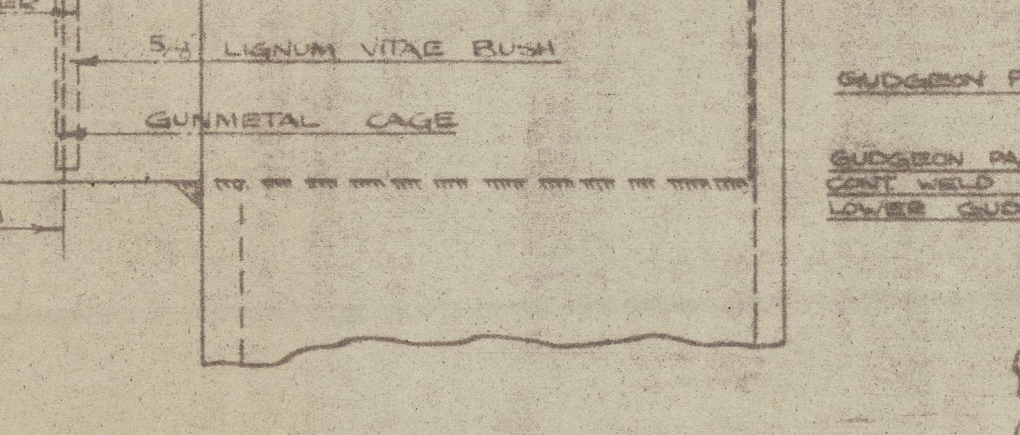
RUDDER STOCK TO BE
INCREASED 1/4" IN WAY OF TILLER
TO FACILITATE REMOVAL



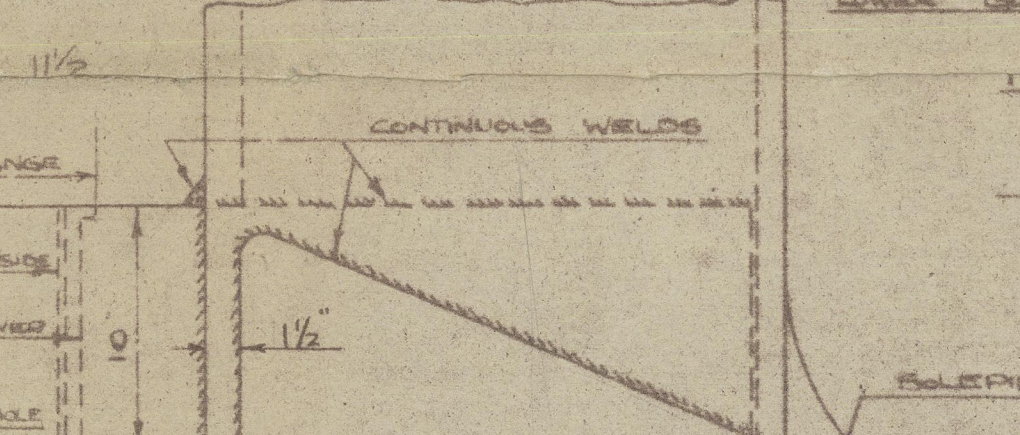
RUDDER STOCK TO BE
INCREASED 1/4" IN WAY OF TILLER
TO FACILITATE REMOVAL



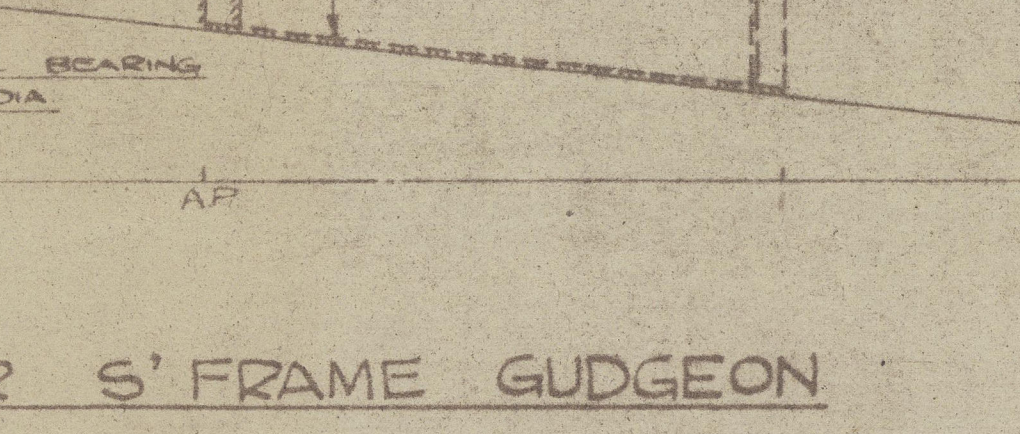
RUDDER STOCK TO BE
INCREASED 1/4" IN WAY OF TILLER
TO FACILITATE REMOVAL



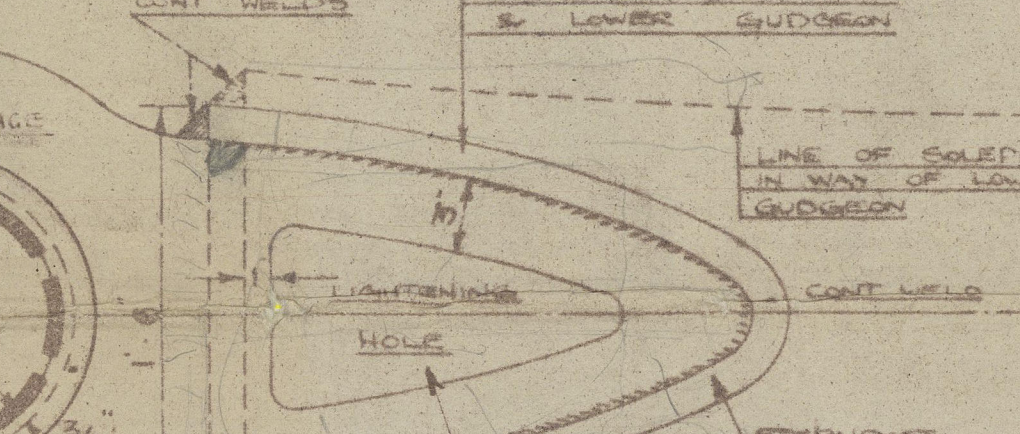
RUDDER STOCK TO BE
INCREASED 1/4" IN WAY OF TILLER
TO FACILITATE REMOVAL



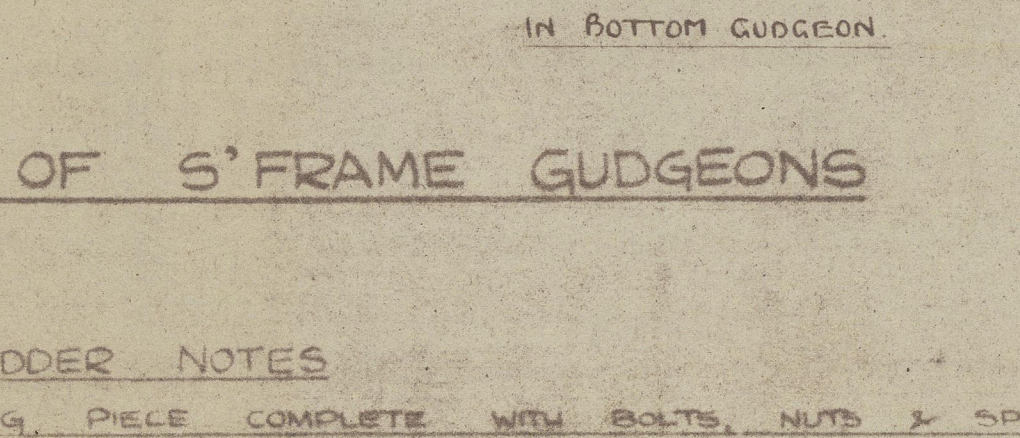
RUDDER STOCK TO BE
INCREASED 1/4" IN WAY OF TILLER
TO FACILITATE REMOVAL



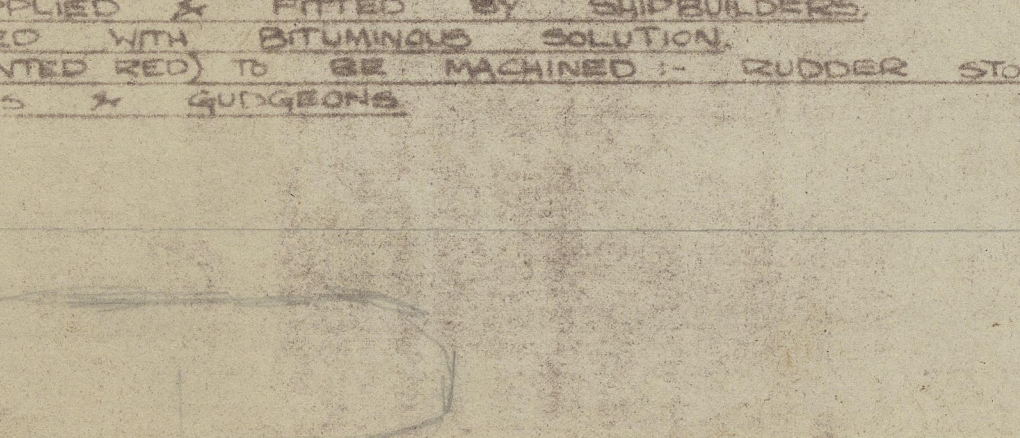
RUDDER STOCK TO BE
INCREASED 1/4" IN WAY OF TILLER
TO FACILITATE REMOVAL



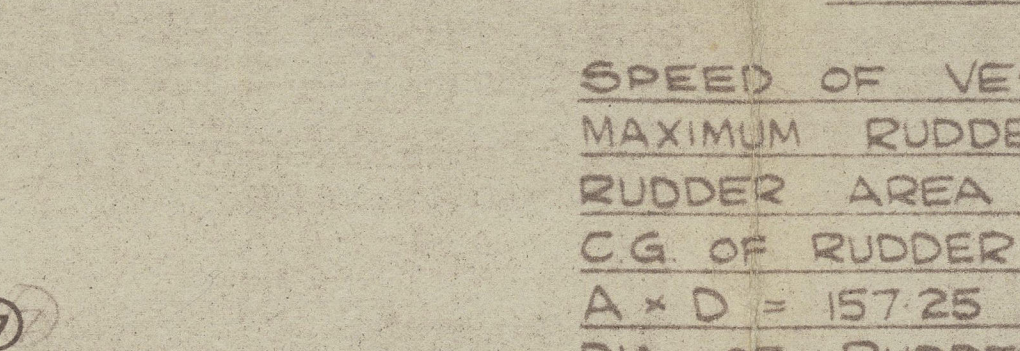
RUDDER STOCK TO BE
INCREASED 1/4" IN WAY OF TILLER
TO FACILITATE REMOVAL



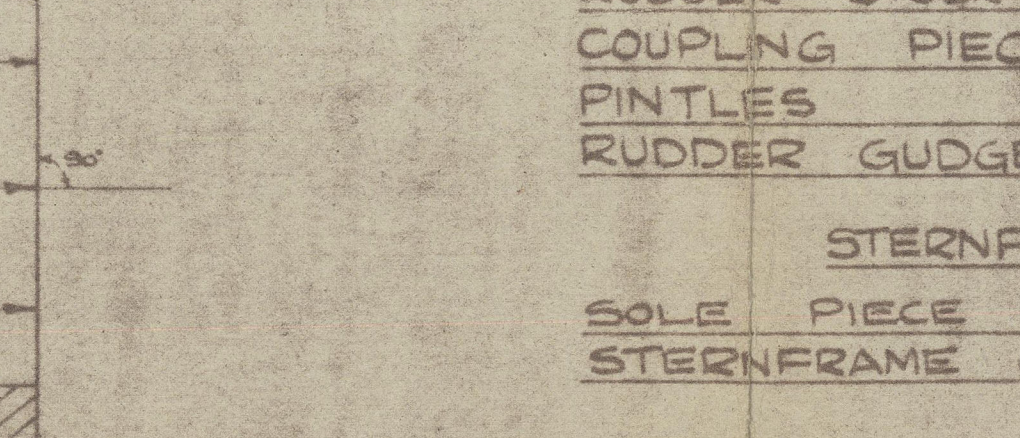
RUDDER STOCK TO BE
INCREASED 1/4" IN WAY OF TILLER
TO FACILITATE REMOVAL



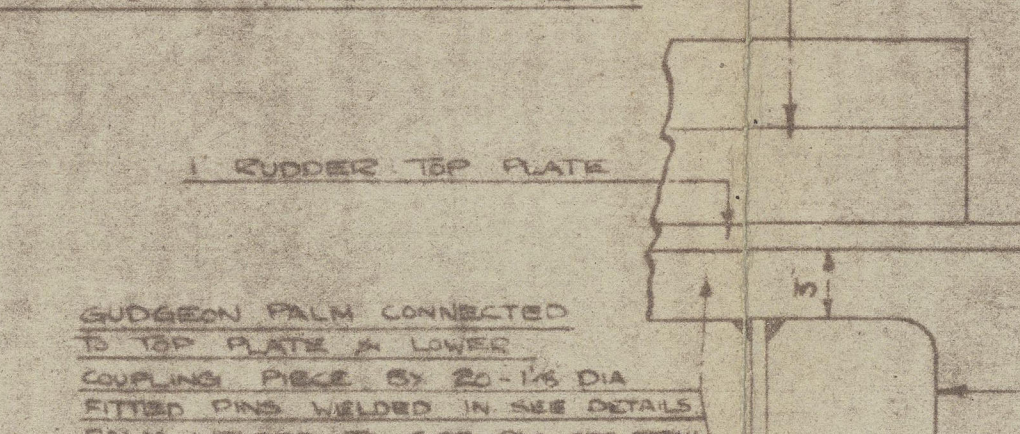
RUDDER STOCK TO BE
INCREASED 1/4" IN WAY OF TILLER
TO FACILITATE REMOVAL



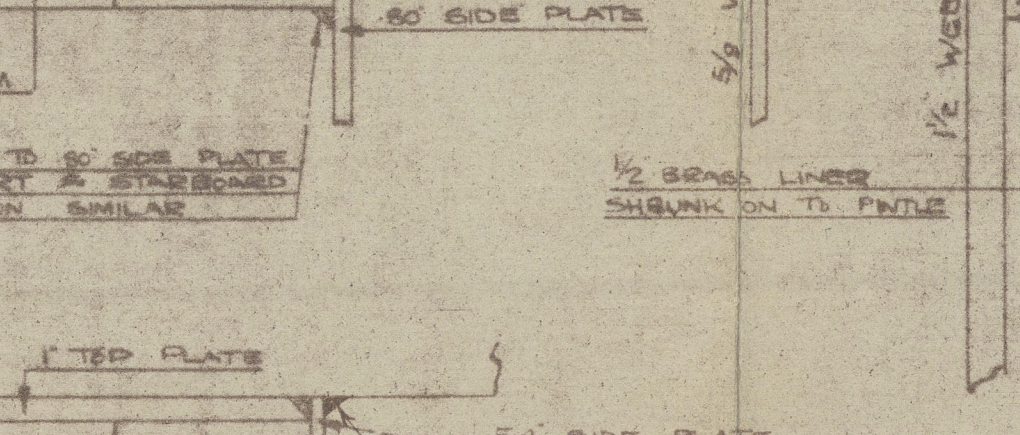
RUDDER STOCK TO BE
INCREASED 1/4" IN WAY OF TILLER
TO FACILITATE REMOVAL



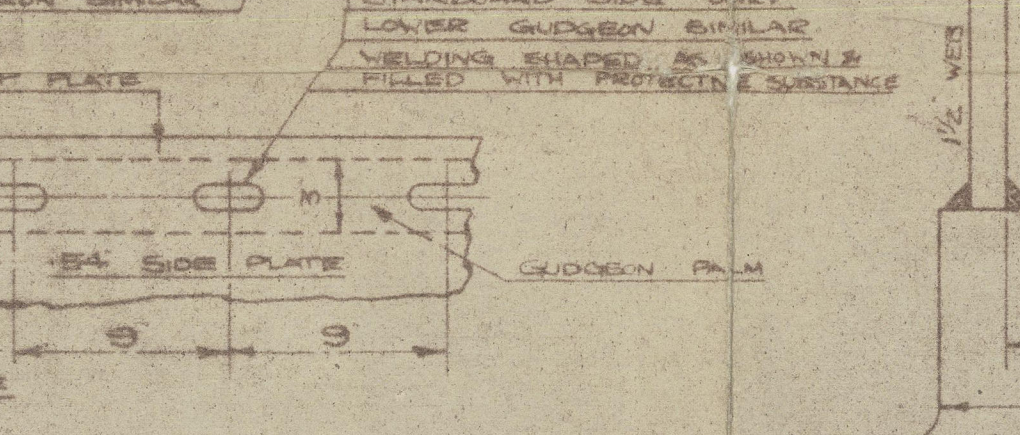
RUDDER STOCK TO BE
INCREASED 1/4" IN WAY OF TILLER
TO FACILITATE REMOVAL



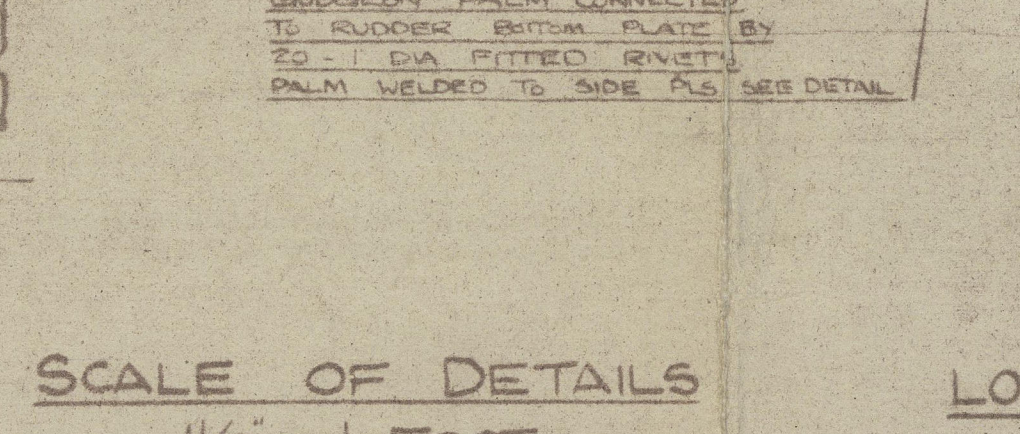
RUDDER STOCK TO BE
INCREASED 1/4" IN WAY OF TILLER
TO FACILITATE REMOVAL



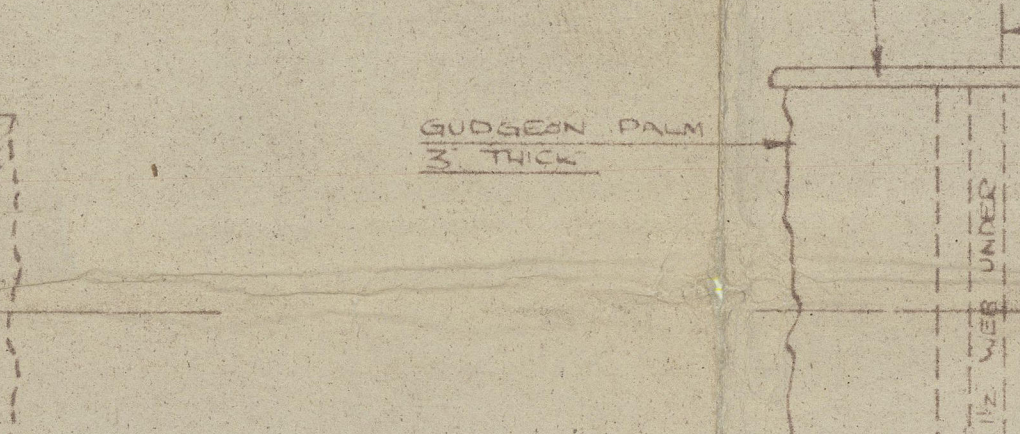
RUDDER STOCK TO BE
INCREASED 1/4" IN WAY OF TILLER
TO FACILITATE REMOVAL



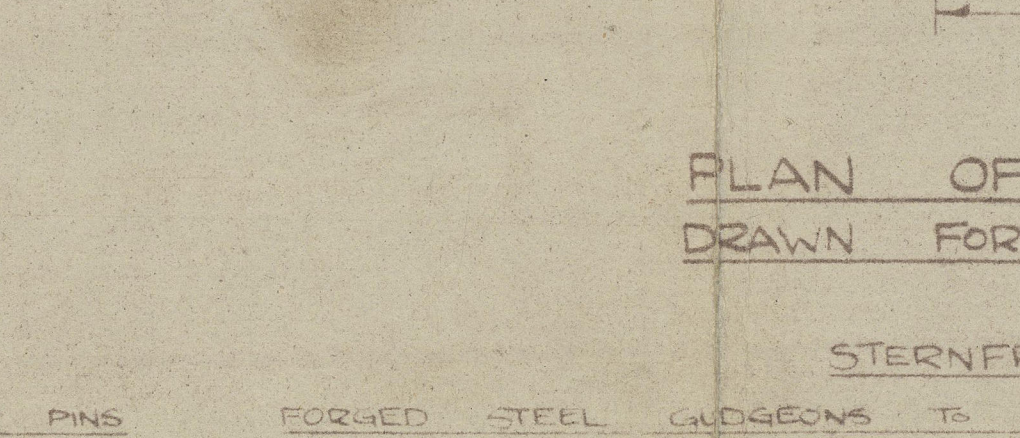
RUDDER STOCK TO BE
INCREASED 1/4" IN WAY OF TILLER
TO FACILITATE REMOVAL



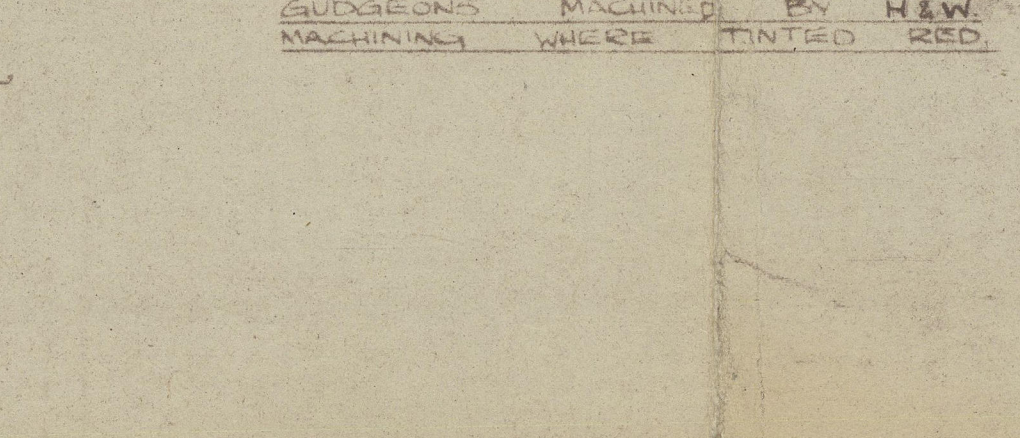
RUDDER STOCK TO BE
INCREASED 1/4" IN WAY OF TILLER
TO FACILITATE REMOVAL



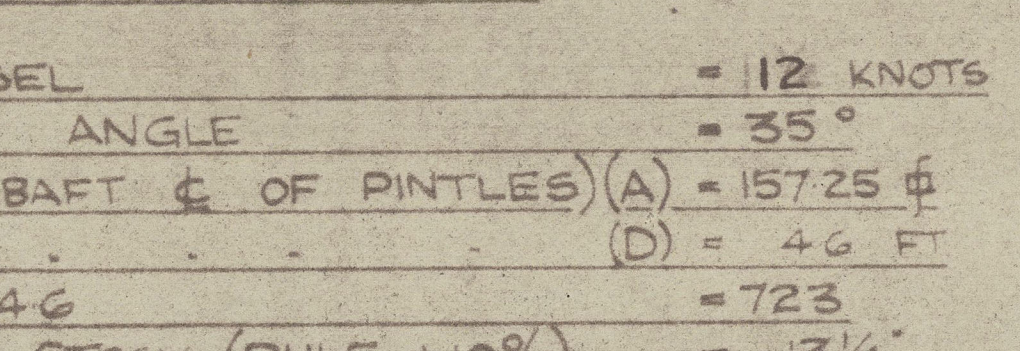
RUDDER STOCK TO BE
INCREASED 1/4" IN WAY OF TILLER
TO FACILITATE REMOVAL



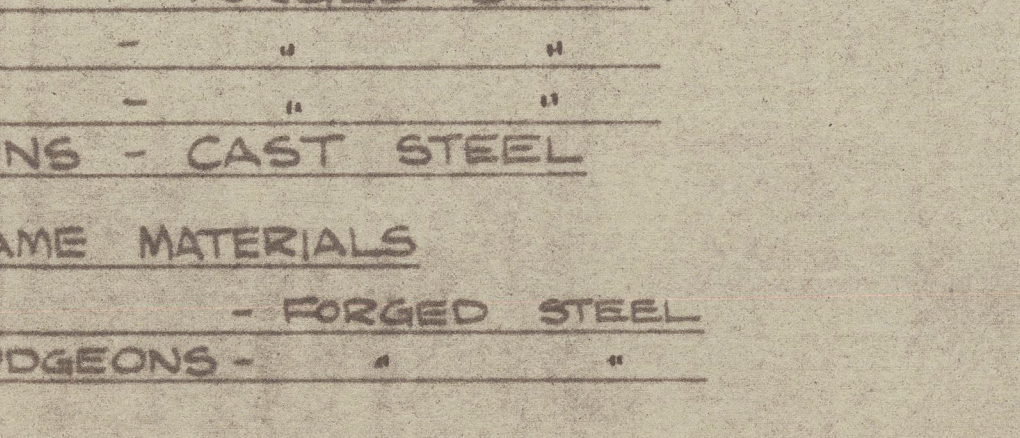
RUDDER STOCK TO BE
INCREASED 1/4" IN WAY OF TILLER
TO FACILITATE REMOVAL



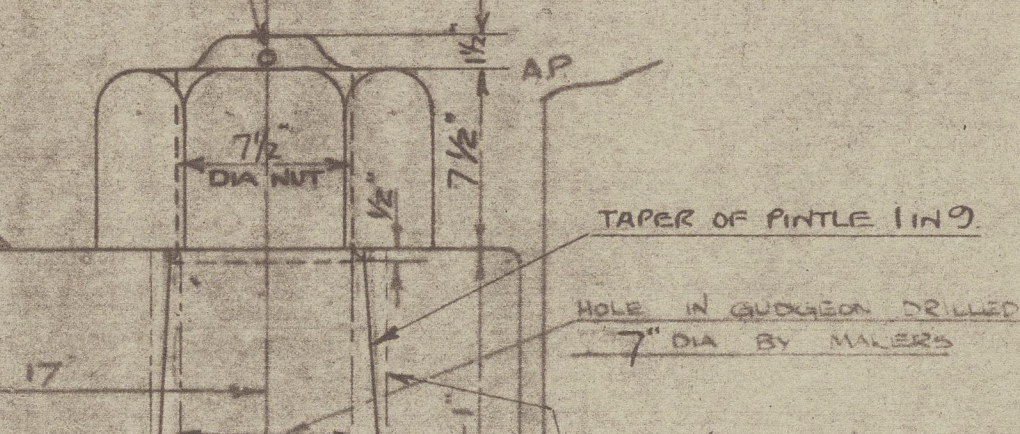
RUDDER STOCK TO BE
INCREASED 1/4" IN WAY OF TILLER
TO FACILITATE REMOVAL



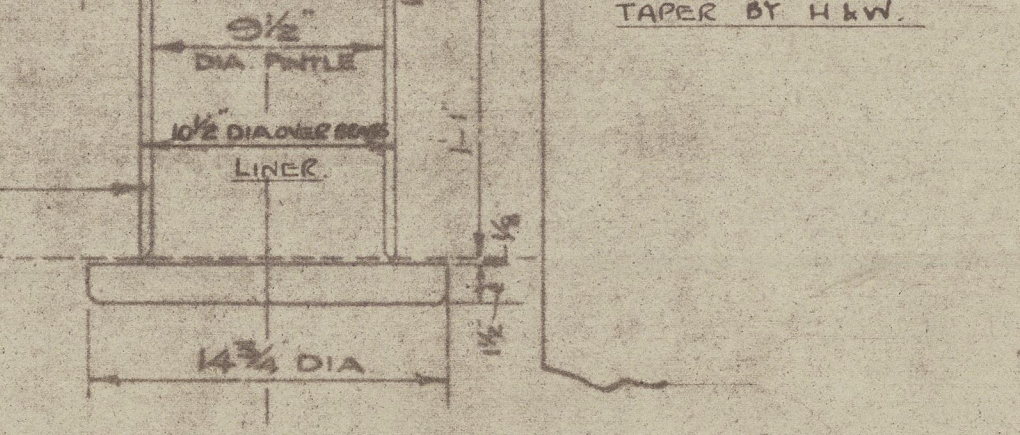
RUDDER STOCK TO BE
INCREASED 1/4" IN WAY OF TILLER
TO FACILITATE REMOVAL



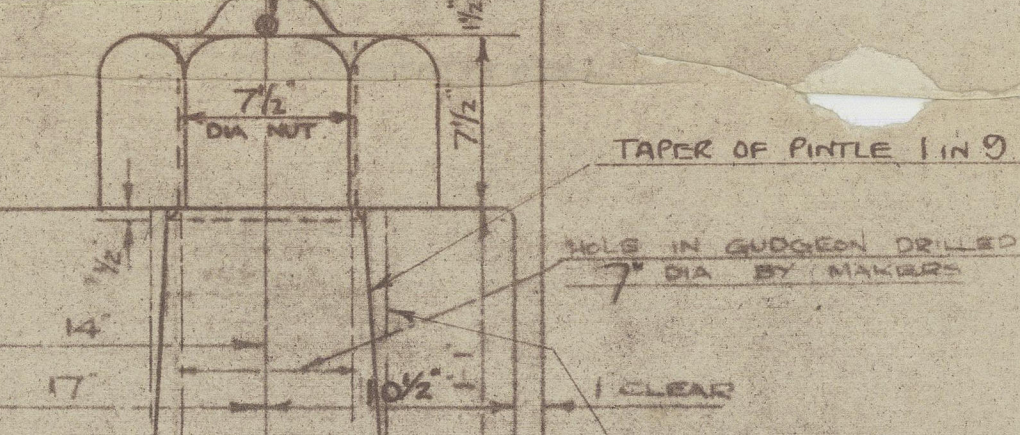
RUDDER STOCK TO BE
INCREASED 1/4" IN WAY OF TILLER
TO FACILITATE REMOVAL



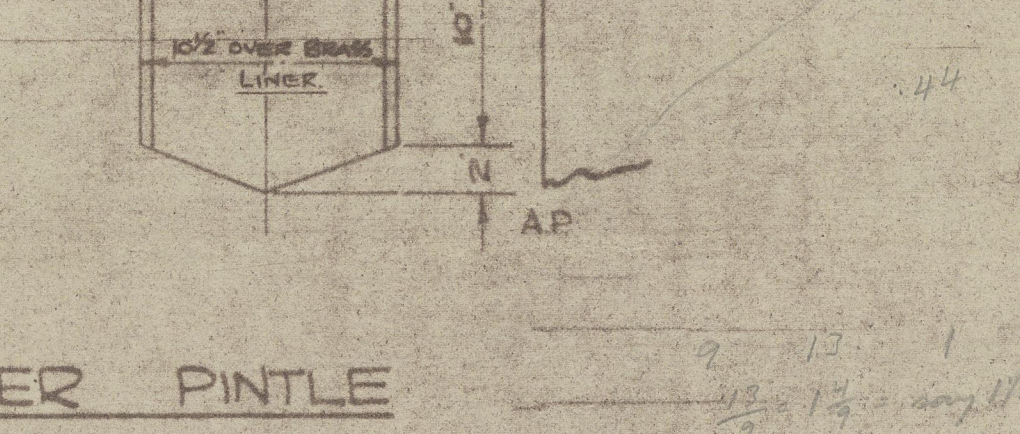
RUDDER STOCK TO BE
INCREASED 1/4" IN WAY OF TILLER
TO FACILITATE REMOVAL



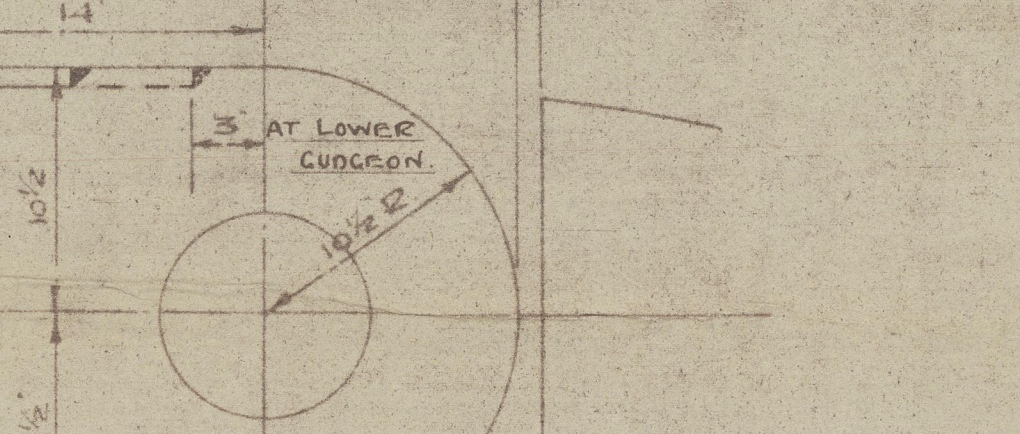
RUDDER STOCK TO BE
INCREASED 1/4" IN WAY OF TILLER
TO FACILITATE REMOVAL



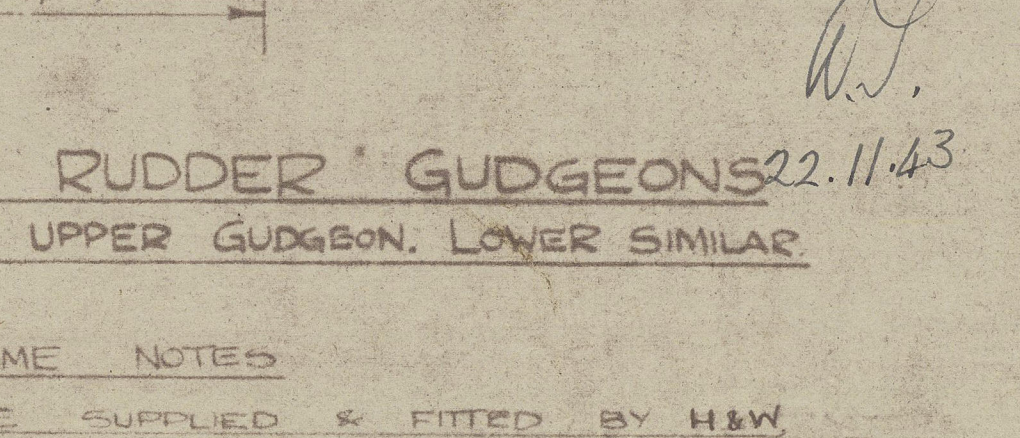
RUDDER STOCK TO BE
INCREASED 1/4" IN WAY OF TILLER
TO FACILITATE REMOVAL



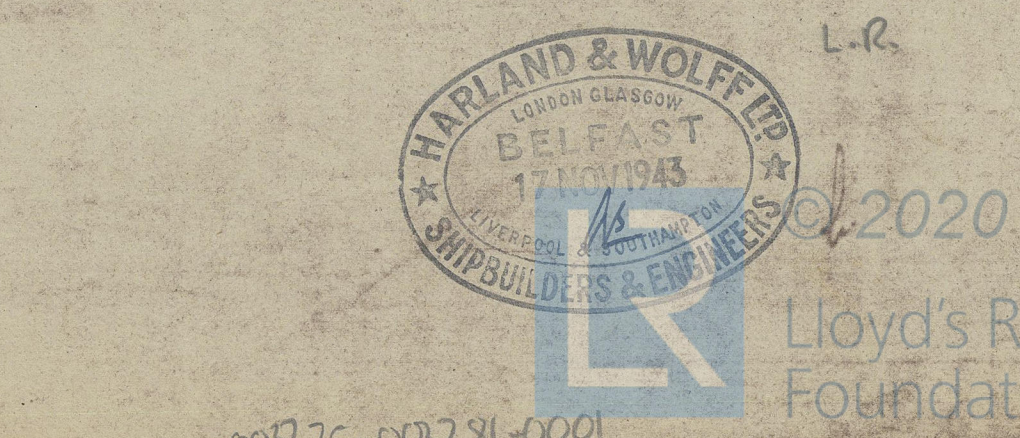
RUDDER STOCK TO BE
INCREASED 1/4" IN WAY OF TILLER
TO FACILITATE REMOVAL



RUDDER STOCK TO BE
INCREASED 1/4" IN WAY OF TILLER
TO FACILITATE REMOVAL



RUDDER STOCK TO BE
INCREASED 1/4" IN WAY OF TILLER
TO FACILITATE REMOVAL



RUDDER STOCK TO BE
INCREASED 1/4" IN WAY OF TILLER
TO FACILITATE REMOVAL

PARTICULARS FOR RUDDER

SPEED OF VESSEL = 12 KNOTS
MAXIMUM RUDDER ANGLE = 35°
RUDDER AREA (ABAFT C OF PINTLES) (A) = 157.25 sq ft
C.G. OF RUDDER (D) = 46 FT
A x D = 157.25 x 46 = 7233
DIA OF RUDDER STOCK (RULE + 10%) = 13 1/4"

RUDDER MATERIALS

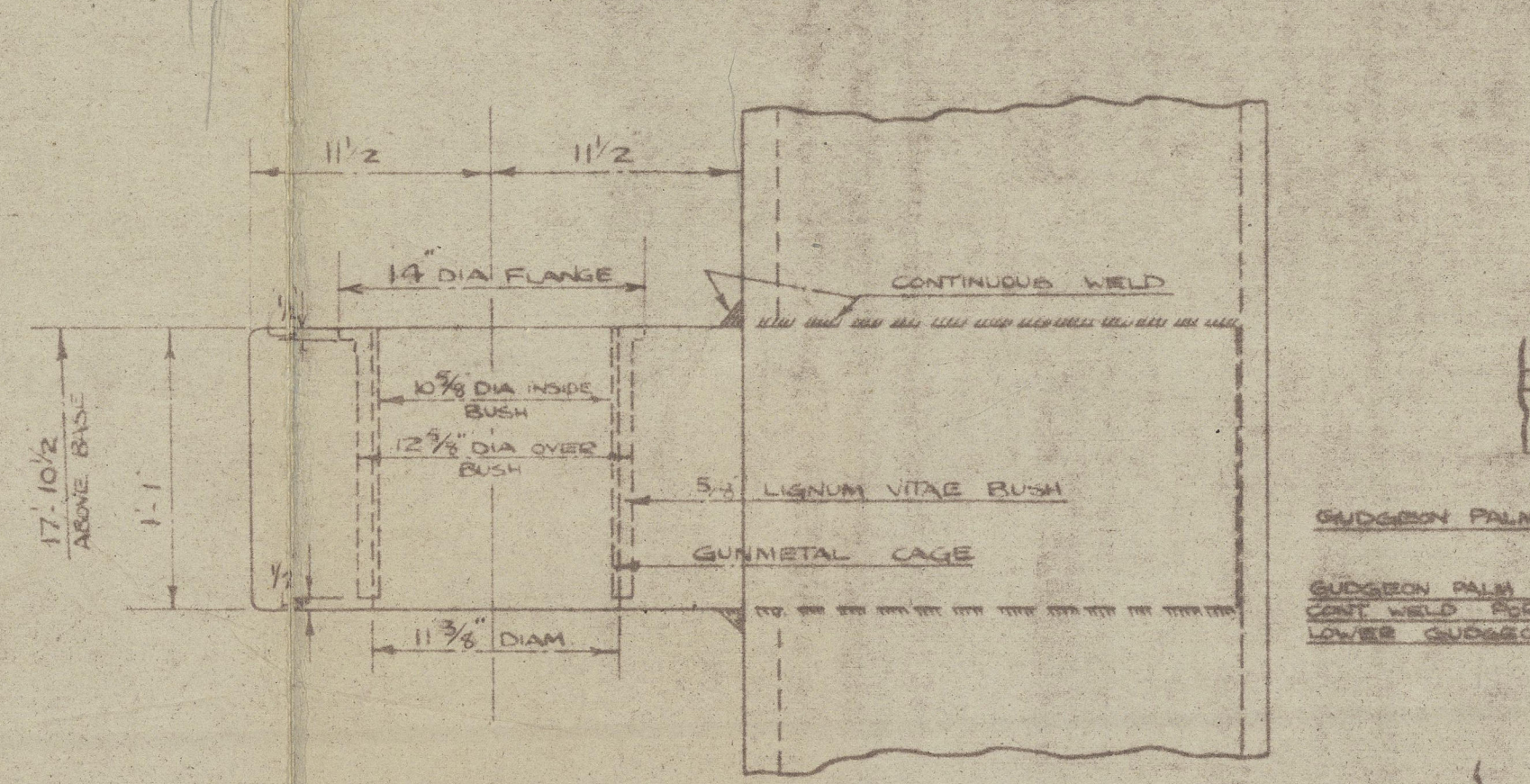
RUDDER STOCK - FORGED STEEL
COUPLING PIECE - " "
PINTLES - " "
RUDDER GUDGEONS - CAST STEEL

STERNFRAME MATERIALS

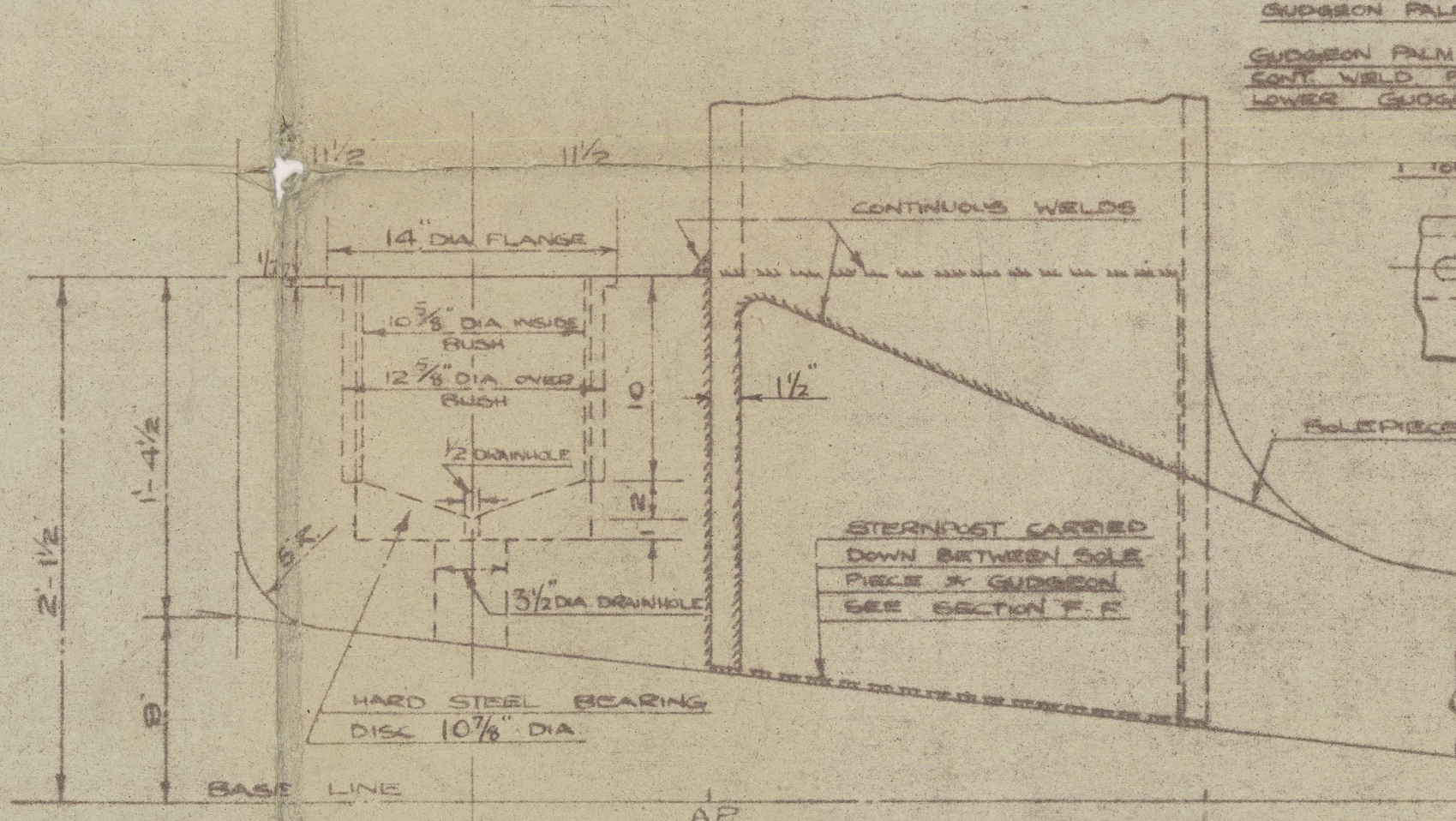
SOLE PIECE - FORGED STEEL
STERNFRAME GUDGEONS - " "

DETAILS OF BOSS EYE

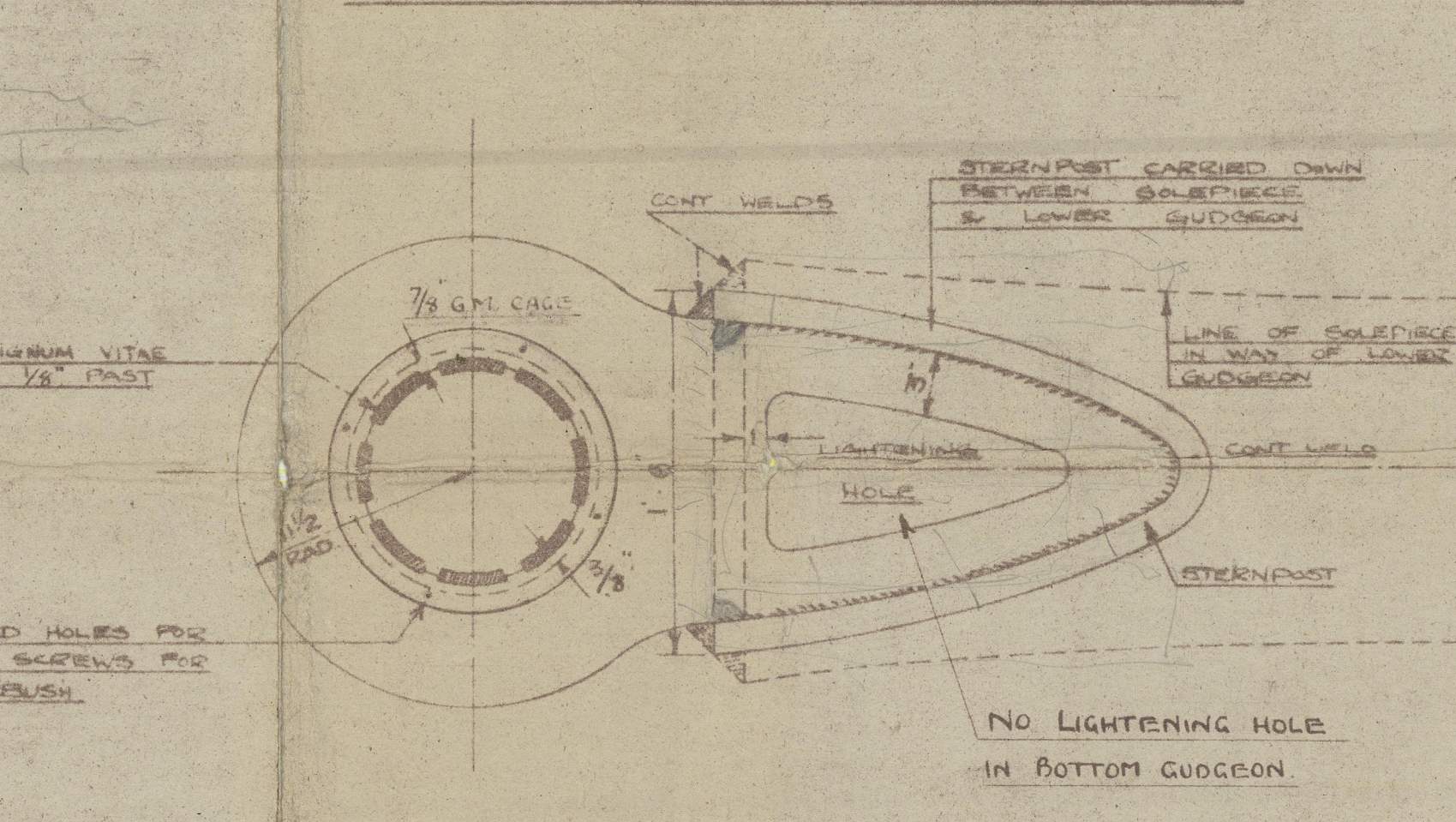
SCALE:- 1" = 1 FOOT



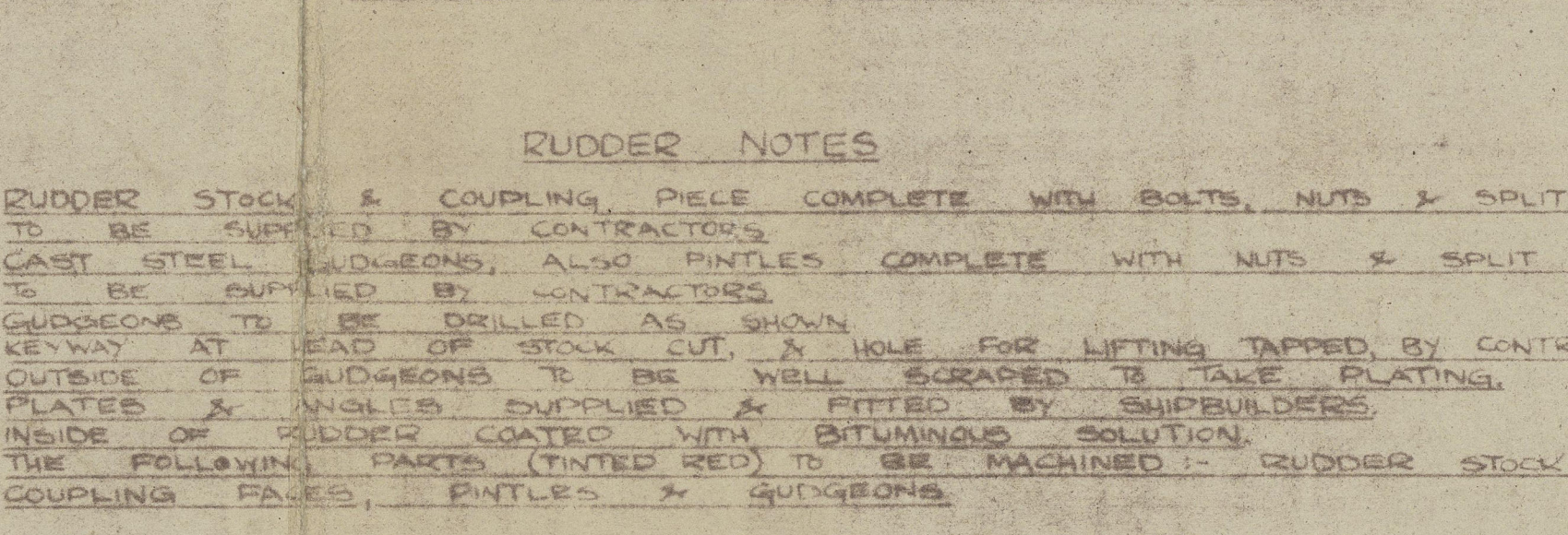
UPPER S'FRAME GUDGEON



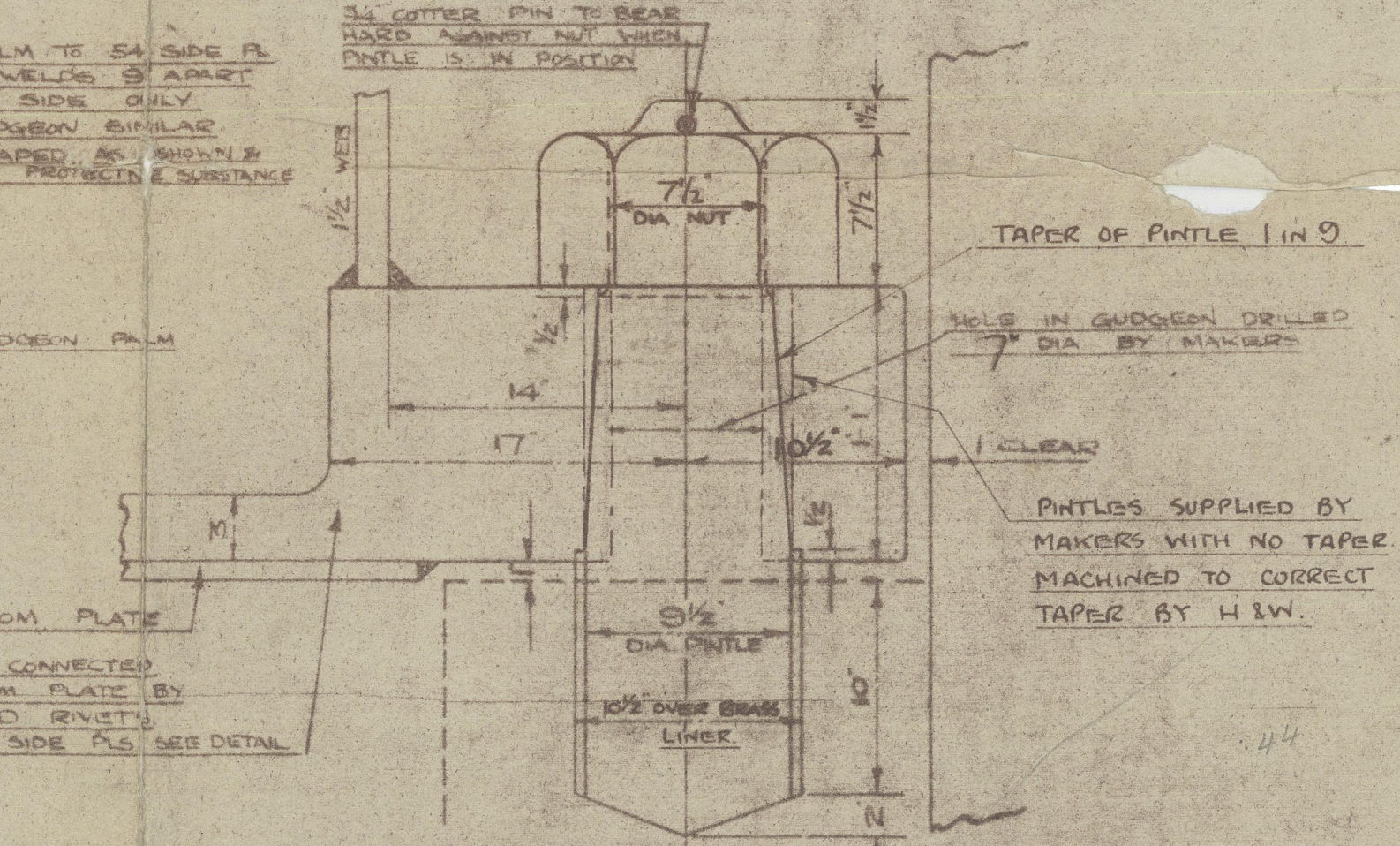
LOWER S'FRAME GUDGEON



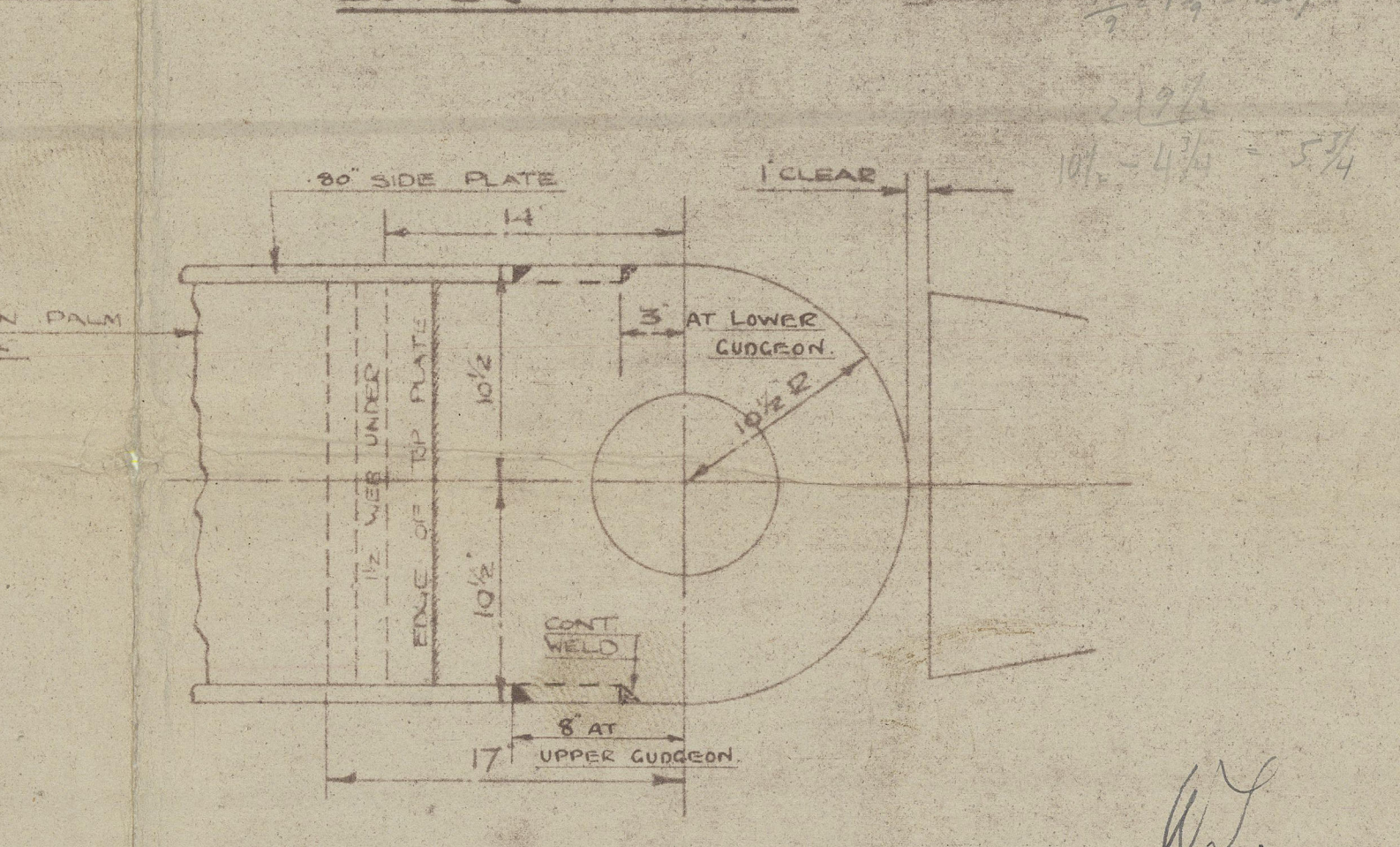
PLAN OF S'FRAME GUDGEONS



UPPER PINTLE (LOCKING)



LOWER PINTLE



PLAN OF RUDDER GUDGEONS

DRAWN FOR UPPER GUDGEON, LOWER SIMILAR

STERNFRAME NOTES

RUDDER STOCK & COUPLING PIECE COMPLETE WITH BOLTS, NUTS & SPLIT PINS
TO BE SUPPLIED BY CONTRACTORS
CAST STEEL GUDGEONS, ALSO PINTLES, COMPLETE WITH NUTS & SPLIT PINS
TO BE SUPPLIED BY CONTRACTORS
GUDGEONS TO BE DELIVERED AS SHOWN
KEYWAY AT HEAD OF STOCK CUT & HOLE FOR LIFTING TAPPED BY CONTRACTORS
OUTSIDE OF GUDGEONS TO BE WELL SCRAPED TO TAKE PLATING
PLATES & NUTS TO BE SUPPLIED & FITTED BY SUBCONTRACTORS
INSIDE OF RUDDER COATED WITH BITUMINOUS SOLUTION
THE FOLLOWING PARTS (UNITED RED) TO BE MACHINED:- RUDDER STOCK,
COUPLING PAGES, PINTLES & GUDGEONS



~~1198~~
~~1199~~

S. 1198/9
Stemframe & Rudder

23/11/43

1198 Belfast RMC No. 13803 - *Niso. * 29th

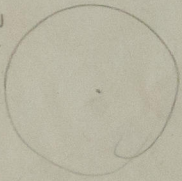
1199 13894 - Newcombia
Eng. lat-

3



© 2020
Lloyd's Register
Foundation

1/2

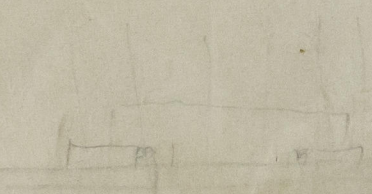
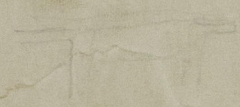


© 2020

Lloyd's Register
Foundation

40 1
this made
OL, NO
18. 18. 18.
18. 18. 18.

5210
500
0.57



© 2020

Lloyd's Register
Foundation