

Nº 1198 · 1199

MIDSHIP SECTION.

DIMENSIONS: 460'-0" B.P. x 59'-0" BREADTH MLD. x 34'-0" DEPTH MLD.

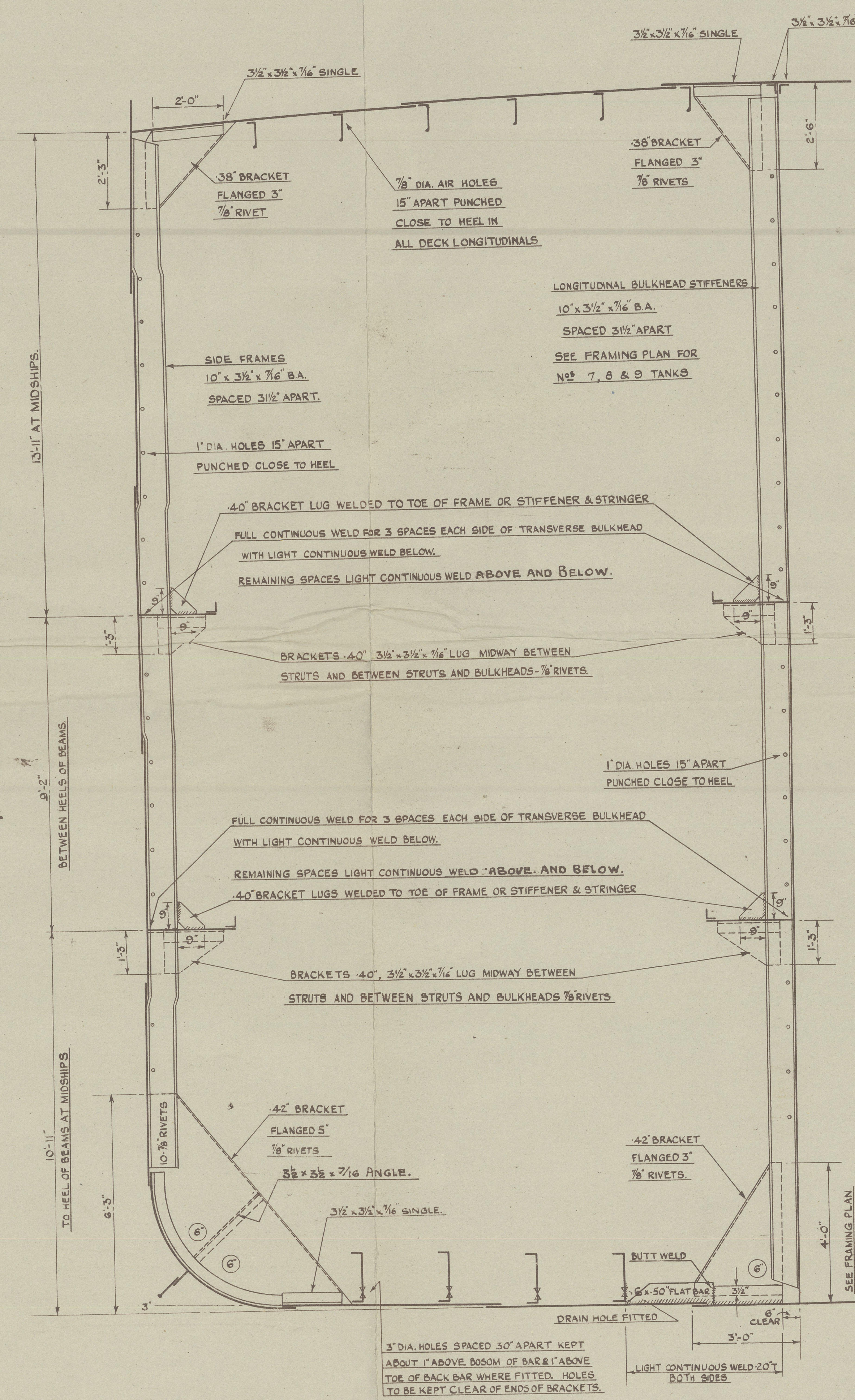
SCALE: - 1/2" = ONE FOOT

TO CLASS LLOYD'S 100 A1.
CARRYING PETROLEUM IN BULK.
LONGITUDINAL FRAMING AT BOTTOM & AT DECK
ALL BULB ANGLES ARE TO NEW BRITISH STANDARD
SCANTLINGS SHOWN APPLY AMIDSHIPS AND ARE
TO BE INCREASED FOR SHEER AS REQUIRED.
SCANTLINGS, INCLUDING SHELL, CLEAR OF CARGO
OIL TANKS TO BE SPECIALLY CONSIDERED.

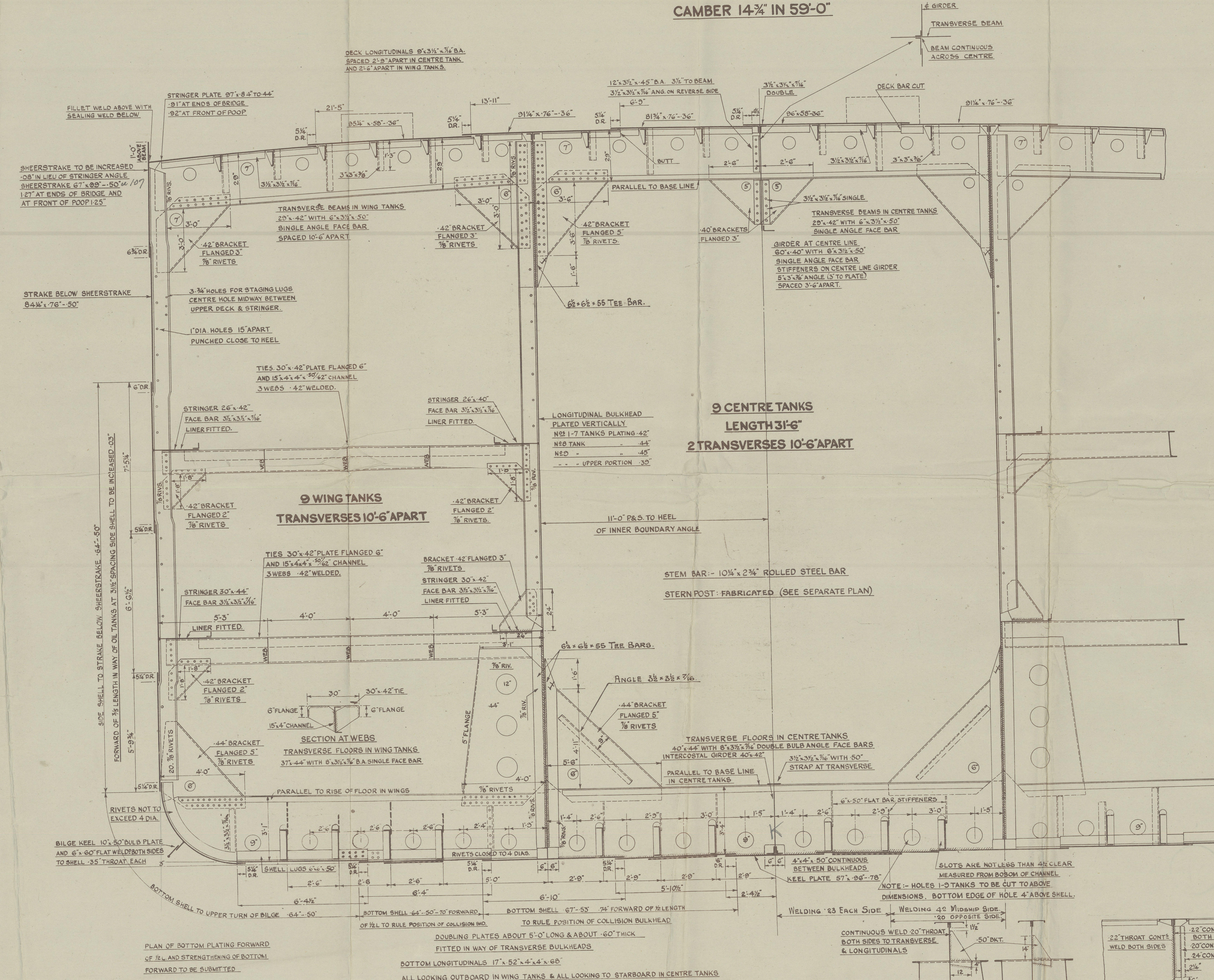
LLOYD'S NUMERALS.
L x D 460' x 34' = 15640
L x (B x D) 460' (59' x 34') = 42780
L/D 460/34' = 13.52

ALL ATTACHMENT ANGLES TO BULKHEADS TO BE HYDRAULICALLY RIVETED ON
THE GROUND PRIOR TO ERECTION. NO PLATE SEAMS OR BUTTS TO BE ARRANGED
IN WAY OF THE CONNECTIONS OF THE TRANSVERSES & STRINGERS TO BULKHEADS.

IN CONNECTIONS MARKED THUS ∇ RIVET HOLES IN BOTH BAR AND BULKHEAD TO BE
PUNCHED 1/16" SMALL AND CAREFULLY REAMERED OUT AFTER ASSEMBLY. CONNECTIONS
TO BE THEN DISMANTLED AND SURFACES CLEANED AND ALL BULBS REMOVED.
ON RE-ASSEMBLY BOLTS TO BE FITTED IN EVERY 3RD HOLE. ALSO IN BOTH HOLES
AT BOTH ENDS OF BARS AND ALL THOROUGHLY HARDENED UP.
END OF BARS ON FACE SIDE OF BULKHEADS TO BE WELDED PRIOR TO RIVETING. SEE SKETCH



SECTION THROUGH WING TANKS.
AT INTERMEDIATE FRAME.



SECTION AT TRANSVERSES LOOKING AFT

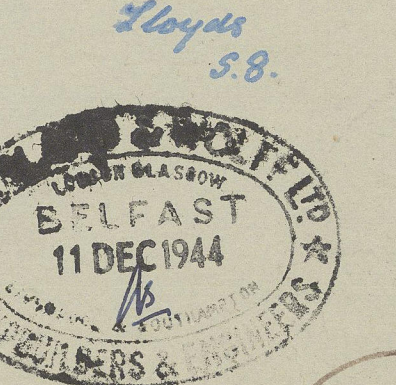
RIVETING

BOTTOM SHELL BUTTS - QUADRUPLE OVERLAPS TO TREBLE AT ENDS
SIDE SHELL BUTTS - DOUBLE RIVETED FORE AND AFT.
SHELL LANDINGS - QUINTUPLE OVERLAPS TO QUADRUPLE AT ENDS.
KEEL PLATE BUTTS - FOR 1/2 LENGTH TO TREBLE.
SHEERSTRAKE BUTTS - AT ENDS WHERE NOT EXCEEDING 98\"/>

RIVET SPACING

RIVETS IN BOTTOM LONGITUDINALS TO SHELL - 3/4 DIAS. APART FOR 11 RIVETS EACH
SIDE OF TRANSVERSES AND BULKHEADS 4/8 DIAS. THROUGHOUT IN NOS
8 & 9 TANKS. 6 DIAS. ELSEWHERE (NOS 8 & 9 TANKS SEE FRAMING PLAN).
RIVETS IN DECK LONGITUDINALS - 6 DIAS. APART.
SIDE FRAMES TO SHELL IN WAY OF OIL - 3/8 DIAS. APART.
FRAMES TO SHELL CLEAR OF OIL AND PEAKS - 1 DIAS. WHERE UNDER 28 1/2\"/>

2 BOWER ANCHORS 73-16 CWTs. EACH STOCKLESS
1 STREAM ANCHOR 22 CWTs. (EX. STOCK)
24-0 FATHOMS 2 1/2\"/>



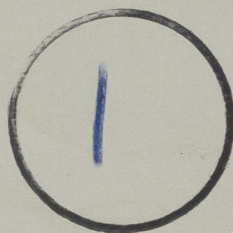
~~1-15~~
92

HARLAND & WOLFF LTD.
BELFAST

No. 1198 only
TITLE Midship Section as built

~~DATE APPROVED~~

Belfast Rkt No 13803 - Niso



NISO