

Lloyd's Register of Shipping.
SURVEYS FOR FREEBOARD.

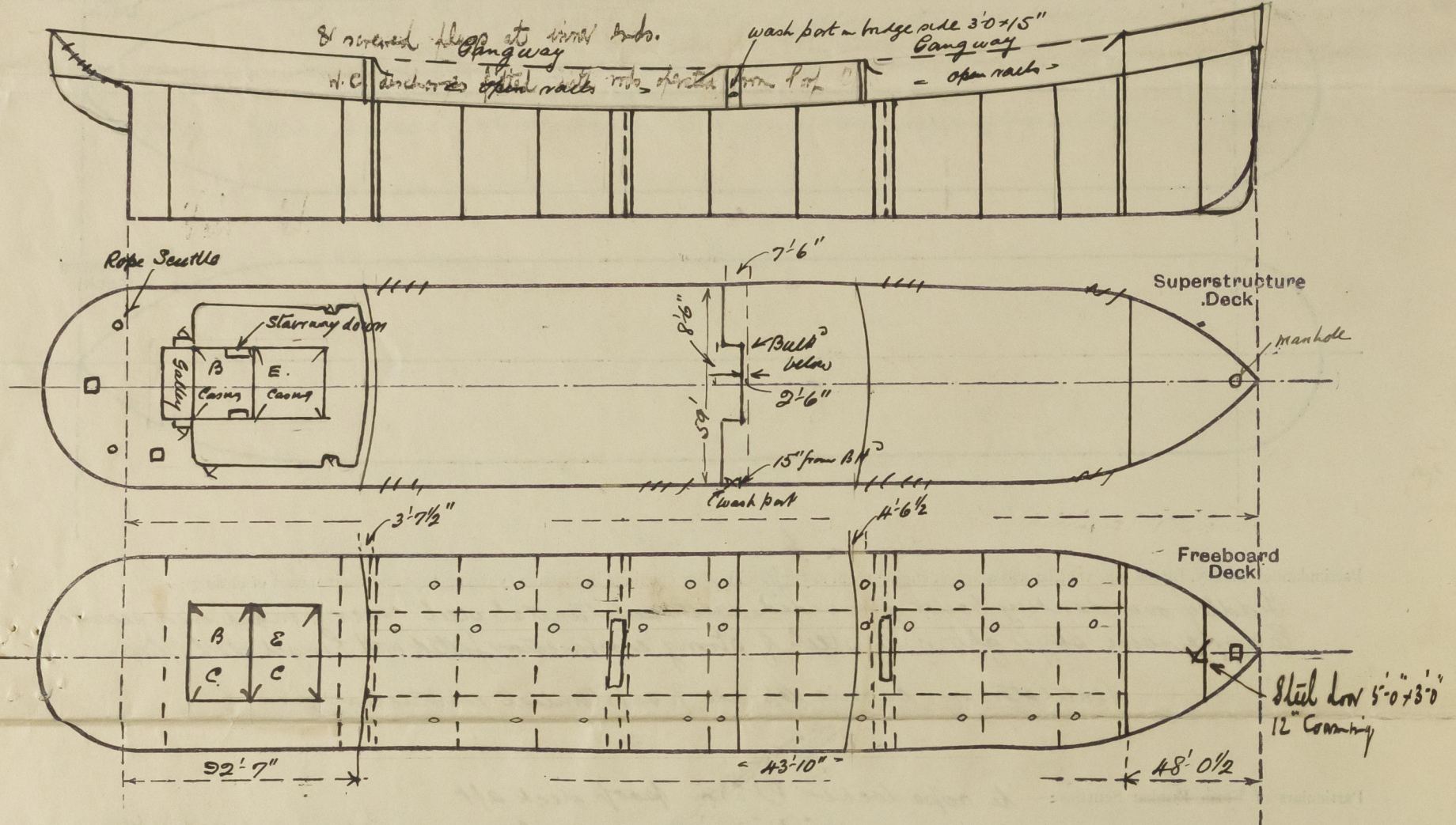
F. 5.8

(CONDITIONS OF ASSIGNMENT) GLASGOW REPORT No 69075

Ship's Name *NISO*
Official Number
Nationality and Port of Registry *British. London*

Port of Survey *Belfast and Glasgow*
Surveyor's Signature *Wm. Balfour and W. J. Pyle.*
Date of Survey *during construction.*

Disposition and dimensions of superstructures, trunks, deckhouses and machinery casings to be inserted in the diagrams and tabular statement :



Particulars of Superstructures, Trunks, Casings, Deckhouses.								
	Coaming	Plating	Stiffeners	Spacing	End Attachments of Stiffeners	Size of Openings	Height of Sills	Height of Casings
Poop Bulkhead		44 welded	8 x 4 x 50 welded	27" to 30"	welded TTB	20'5"0" x 2'6"	18"	7'6"
Raised Quarter Deck Bulkhead	✓							
Bridge, After Bulkhead	✓	30 welded	6 x 5/16 welded	27" to 30"	welded TTB	20'5"3" x 3'0" 10'5" x 2'	18"	7'6"
Bridge, Forward Bulkhead		44 welded	8 x 4 x 50 welded	27" to 30"	welded TTB	10'5"0" x 2'6"	18"	7'6"
Forecastle Bulkhead		30 welded	6 x 5/16 welded	21" to 36"	none	10'5"0" x 2'6"	18"	7'6"
Trunk, Aft						10'5"0" x 2'0"	18"	
Trunk, Forward								
Exposed Machinery Casings on Freeboard or Raised Quarter Decks								
Exposed Machinery Casings on Superstructure Decks								
Machinery Casings within Superstructures not fitted with Class I Closing Appliances								
Deckhouses on Flush Deck Ships								

Particulars of Closing Appliances (state if capable of being manipulated from both sides).	
Poop Bulkhead	2 Hinged steel W.T. doors
Raised Quarter Deck Bulkhead	✓
Bridge, After Bulkhead	one hinged steel W.T. door. Two portable stiffened plates secured by hook bolts
Bridge, Forward Bulkhead	Hinged steel W.T. door
Forecastle Bulkhead	one hinged steel W.T. door; one hinged steel door; one portable stiffened plate secured by hook bolts
Exposed Machinery Casings on Freeboard or Raised Quarter Decks	✓
Exposed Machinery Casings on Superstructure Decks	✓
Machinery Casings within Superstructures not fitted with Class I Closing Appliances	
Deckhouses on Flush Deck Ships	

* operated from both sides

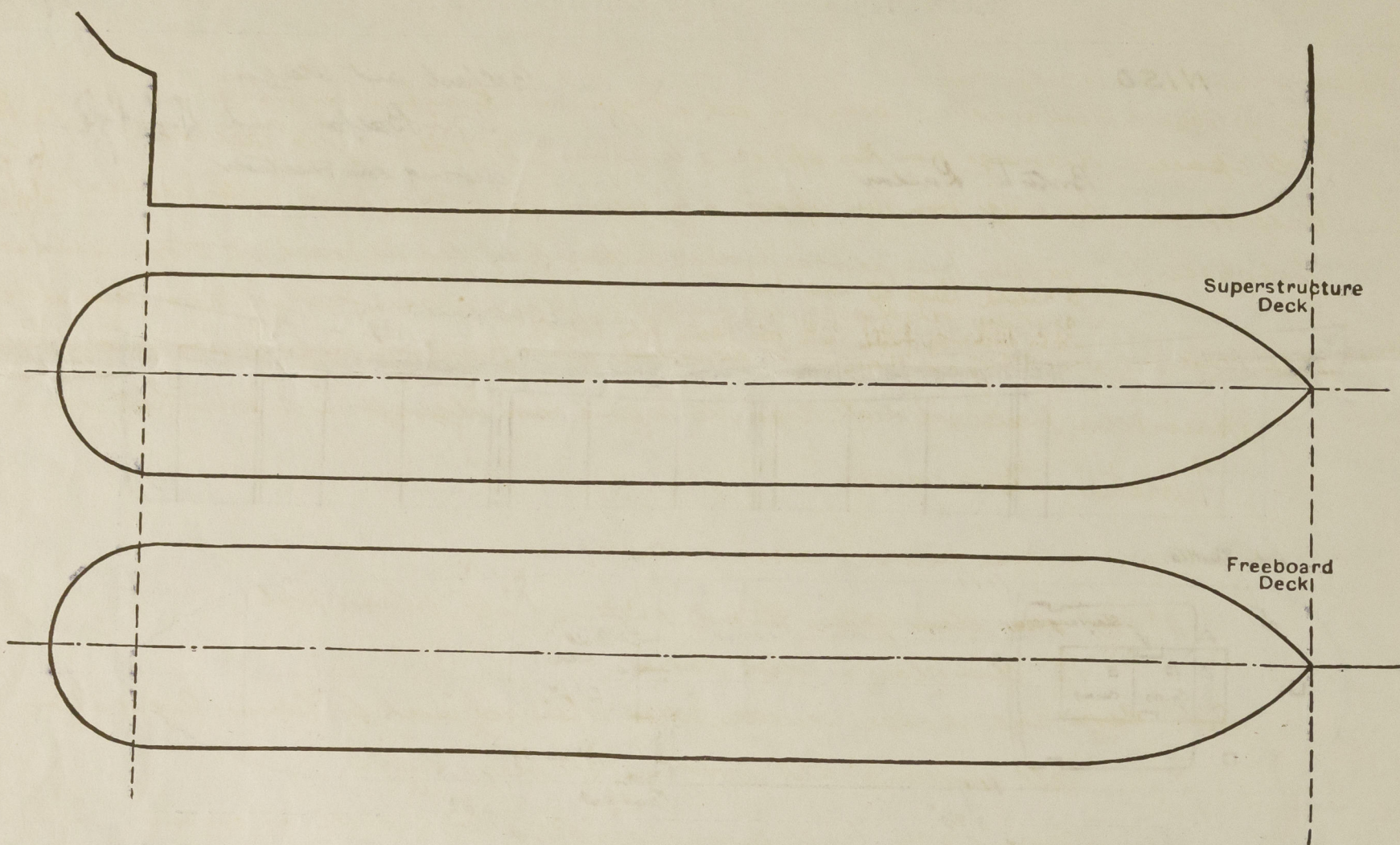


© 2020

Lloyd's Register Foundation

PARTICULARS OF PROTECTION TO OPENINGS, ETC.

The following diagrams should be used to indicate the positions of cargo and coaling hatchways, gangway, cargo and coaling ports, ventilators, companionways, etc., which would affect the seaworthiness of the ship :—



Particulars of fiddley, funnel and ventilator coamings, engine room skylight and other openings in machinery casing tops and their means of closing:—

Huddley over donkey boiler provided with substantial steel covers hinged and secured. Engine room skylight is of steel of strong construction fitted with hinged steel flaps.

Ventilators on casing top are of substantial construction.

Particulars of ~~Flush-Bunker~~ Scuttles:— to rope locker P.S. on poop deck aft

The openings have a 9"x3/4" coaming with flanged steel cover fitted with packing secured by spindle, strong back and butterfly nut. ✓

Particulars of Companionways:— One door in fell keelhead to pump, 5' x 3' o'ull 18", door steel W.T. secured by toggle
Access to pump room (cargoe) on strong steel deck house, one each well, plating .32 welded stiffener
5' x 3' T spaced 27" x 30" door 30" x 58" o'ull 18" hinged steel W.T. secured by toggle.
Deckhouse on poop deck abreast machinery casing has stairway P.B. within, all weather
door have 18" o'ulls openings 26' x 30" x 63" hinged door Oregon pine 3" thick

Particulars of Ventilators in exposed positions on freeboard and superstructure decks:—

On forecastle deck
1 off dia 5' 10", 3' 6" beamings 36" rule thickness to spaces in forecastle & below
2 off 8' 4" GNY, 30" high to Forecastle Store room. 1 off 5' 10" x 7/8 GNY 26" high to Fore Store
On bridge deck.
7' 6". 30" beam x 30" to bridge timber deck
On poop deck.
6' 6", 2' 10" beam. 30" rule thickness. 3 S. N. Yacht coat steel 30"
Fore well.
2 0 24" dia demat ports ventilator to pump room efficiently supported
Off well
2 0 24" dia " " " " " "

Boat deck. 6" dia. 8" dia. 9" dia. 12" dia. ventilator coam 30% plate thickness to prop knee etc

bow ventilator on poop and file provided with steel W.T. cover or wood or steel cover
and canvas cover S. N. V. provided with wood planks

Particulars of Air Pipes in exposed positions on freeboard, raised quarter, or superstructure decks :—

On forecandle deck; 10" to fore peak; 4" to deep tank 30" high & 2 1/2" to magazines in bulk

On foreward deck fore well: 2 @ 3" to fore cofferdam carried up 7 ft. on fore keelhead & clipped there to }
aft well: - 2 @ 3" to aft cofferdam carried up 6' 6" on keelhead and clipped there to }
over with through the rigging.

2 @ 4" to relief bunker earned up about 8 ft on poop keels? & clipped here to
on poop deck!
2 @ 3 1/2 to aft peak; 4 @ 3 1/2 to F.W. tank; 1 @ 3 1/2 to middle trunk

2 @ 2 1/2 to aft peak; 4 @ 2 1/2 to F.W. tank; 1 @ 2 1/2 to main trunk
1 @ 2 1/2 to stem comp.⁶ all 30" high ^{above} provided with canvas covers

on casing top :- Air pipes 2 1/2" to 4" dia from tanks on eng. space height 18" above casing top

Particulars of Gangway Cargo and Coaling Ports:—

None

Niso

Particulars of Scuppers and Sanitary Discharge Pipes :—

From foreboard deck wells. scupper cut at gunwale through clestrake
Yell space: drainage from this space by means of 2" holes in fore bulkhead
Bridge space: drainage from this space by means of 2" holes in bridge after bulkhead
Poop space: - scupper from foreboard deck within poop led overboard with storm valve at side.
Simultaneous discharges led foreboard and below foreboard deck with storm valve at ship's side
Upper bridge: - Simultaneous discharges led foreboard and above foreboard deck with storm valve at ship's side

Spaces below freeboard deck drain to engine room bilge aft and to drain tank forward

Fabricated Storm values of makeable east wind

Particulars of Side Scuttles :—

have below fossils and debris

8" x 10" dia clear glass through shell in f'le. magnet pack

12" clear glass w- deck houses

Also large size escape scuttles fitted where required by Defence Regulations

all scuttles fitted with hinged deadlights

a substantially built escape scuttle fitted in shell at cruiser

stem between freeboard deck and poop deck


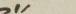
Vertical distance of Sill of lowest Side Scuttle above top of keel

None below freeboard deck

Particulars of Guard Rails :—

On Prop. bridge and forecastle and between bulwarks & wells
3'-8" high. 3 rails standard 4'-6" to 5'-0" apart

Particulars of Gangways, Lifelines, etc.:— Inset-off gangway & wells 7'-0" high. Channel stinger 6' 3" 3' 3/8" PLS connected by 3' 3" 3/8" transverse angles spaced 4'-0" apart. Gangway plated .30 shequenal, with rails (two each side). The gangway is supported by bracing to deck 4' 4" 1/2" spaced 8'-0" apart and spread 5'-3" transversely at deck. Supports braced transversely by 3' 3" 3/8" angles diagonally & longitudinally by bars 3' 1/2" 3' 1/2" 3/8" fitted diagonally at alternate spaces

Particulars of Freeing Arrangements.						
	Length of Bulwark	Height of Bulwark	Size of Freeing Ports	Number each side	Area each side	Rule area each side
Inclusion open bulwark at poop	15ft			1	over 50% open	
After Well 152' - 10"	at bulwark 52ft	3' - 8"	 3'0" x 1'3"	1	rails	✓
Forward Well 120' - 8"	at Bul 14ft	3' - 8"	 3'0" x 1'3"	1	over 50% open	✓
	at side 27ft			1	rails	

State position of each freeing port	{ After Well :—
(F. and A. position and height above deck edge)			

State whether the freeing ports are fitted with shutters, bars, or rails, and give particulars of such:—

Additional area where sheer is less than standard.

PARTICULARS OF PROTECTION TO OPENINGS, ETC.

HATCHWAYS ON FREEBOARD AND SUPERSTRUCTURE DECKS.									
<div style="display: flex; justify-content: space-between;"> Forecastle deck Freeboard deck </div>									
Description of Hatchway	Fore peak	Forehold	To mezzanine	Cargolands	Cofferdam	Under 7'6"	Under 7'6"	Under 7'6"	Under 7'6"
Dimensions of Hatchway	Manhole 14' x 14'	8' x 8'	24' x 30'	21'0" dia	24' x 18"	30' x 30'			33' x 33'
COAMINGS	Height above Deck	9" Ba	30"	9" above steel	10"	5"	9" Ba		9" Ba
	Thickness	.46	.50	about 6"	3/4"	.46	.46		.46
	Stiffeners	Coaming	Franked	about 6"	about 6"	about 6"	about 6"		about 6"
	Brackets, Stays			plastic					
HATCH BEAMS	Number								
	Spacing								
FORE AND AFTERS	Number								
	Spacing								
	Unsupported Lengths								
	Scantling* and Sketch								
HATCH COVERS	Material	Steel	Steel	Steel	Steel	Steel	Steel		Steel
	Thickness	.50	.50	.50	.50	.50	.50		.50
Spacing of Cleats	How fitted	W.T.	hinged	W.T.	hinged	W.T.	hinged		hinged
	Bearing Surface	W.T.	hinged	W.T.	hinged	W.T.	hinged		hinged
Number of Tarpaulins	to gills	to gills	to gills	to gills	to gills	to gills	to gills		to gills
	15' apart	18' apart	18' apart	20' apart	18' apart	18' apart	18' apart		20' apart

*Are wood fore and afters steel shod at all bearing surfaces? ☒

Are battens and wedges efficient and in good condition? ☒

Are tarpaulins in good condition and in accordance with rule requirements? ☒

Are lashings provided in accordance with rule requirements? ☒

Particulars of any special features:—

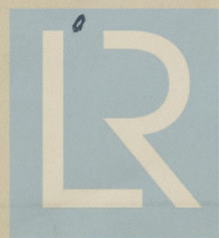
Guard rails fitted round cargo hatches.

Endorsement at first survey and at surveys for renewal of Certificate:—

The fittings and appliances are in accordance with the particulars shown on this form (or as now modified) and are in good condition.

1 off dia

8' x 4' GNV, 30" high to Forecastle Storeroom. 1 off 5' dia x 5'16 GNV, 26" high to Fore Store



© 2020

Lloyd's Register Foundation