

SHIP NO 1212

RUDDER.

JOB NO 19

PLAN NO 2

SCALE: 1/8" = 1 FOOT. DETAILS & SECTIONS AS SHOWN.

PARTICULARS.

LENGTH B.P. 130' 0"
BREADTH MLD. 61' 0"
DEPTH MLD. 31' 0"
WATERLINE 25' 5"
SKEWEL SPEED 12 KNOTS.
RUDDER AREA 1487.01 SQ. FT.
SS. AREA CL. OF PINTLES 119.88
SS. AREA CL. OF PINTLES 3.37
A.D. 404.
RUL. SIZE OF STOCK 11" DIA.
OWNERS REQUIRE 1/2" INCREASE
MAXIMUM ANGLE OF RUDDER 40°

NOTES.

TO LLOYD'S TESTS & REQUIREMENTS.
RUDDER STOCK TO BE ACCURATELY TURNED TO DIMENSIONS
GIVEN.
CARE TO BE TAKEN TO ENSURE THAT CENTRES OF PINTLES
& STOCK ARE PERFECTLY ALIGNED.
KEYWAYS TO BE CUT INTO STOCK TO DIMENSIONS GIVEN
LATER.
PINTLE & KEYWAY GAUGES TO BE SUPPLIED BY CONTRACTOR.
PINTLES COMPLETE WITH BRASS BUSHES ARE TO BE
SUPPLIED BY CONTRACTOR.
THICKNESSES OF METAL FOR CASTINGS TO BE CAREFULLY
WORKED TO CASTINGS DRILLED FOR RIVETS AS INDICATED.
ALL MACHINING TO BE DONE BY HAND.
FOR DETAILS OF PINTLES SEE PLAN OF STEER FRAME.
CASTINGS NOT TO BE PAINTED BUT TO BE GIVEN A COAT OF
OIL.
WEIGHT AND SHIPS' N° TO BE PAINTED ON EACH CASTING.

ON COMPLETION TO BE SUBJECTED TO A PRESSURE OF
15 LBS. SQ. IN.
INSIDE OF RUDDER TO BE COATED WITH ONE COATING OF
BITUMINOUS SOLUTION OR GREASE PAINT.
TAP RIVETS ARE TO BE FINISHED OFF WHEN DRIVEN
HOME & WELDED COMPLETELY OVER.
TAP BOLTS TO BE USED IN WAY OF PORTABLE PLATES
& HEADS SPOT WELDED TO PREVENT TURNING
WELDING TO BE TO SURVEYOR'S SATISFACTION.

MATERIAL

RUDDER ARMS

CAST STEEL (QUALITY SUITABLE FOR WELDING)

UPPER STOCK

FORGED INGOT STEEL

PINTLES

FORGED STEEL.

SECTION THRO' RUDDER

SHOWING DETAILS OF CONSTRUCTION

SCALE: 1/8" = 1 FOOT.

RUDDER OFFSETS.

OVERLAP GIVEN TO OUTSIDE OF PLATE.

SECTION AT 'C-C'
INTERCOSTAL GIERES.

SECTION AT 'B-B'
MAIN GIERES.

SECTION AT 'A-A'
CENTER LINE OF PINTLES.

NOTE:
PINTLES TO BE SHIPPED WITH
EVIDENCE.

PLAN AT TOP ARM.
SCALE: 1/8" = 1 FOOT.

PLAN OF WEB.
SCALE: 1/8" = 1 FOOT.

PLAN AT CENTRE ARM.
SCALE: 1/8" = 1 FOOT.

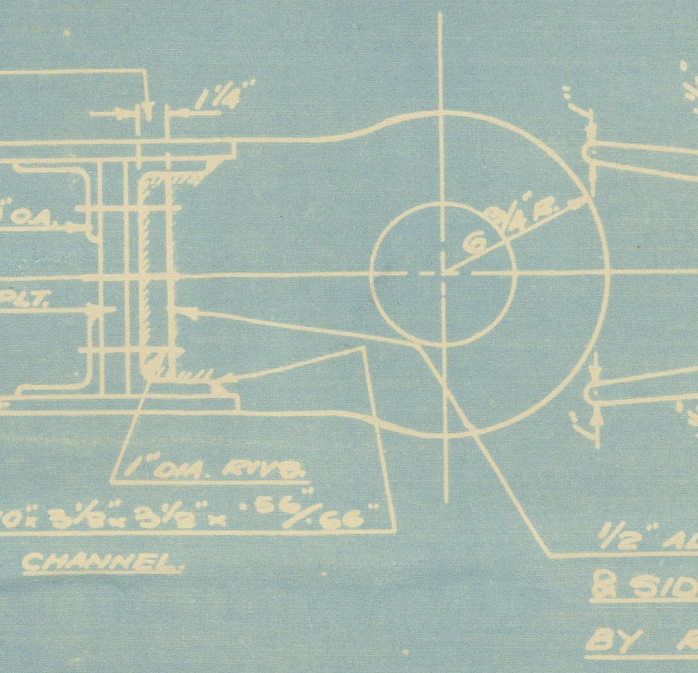
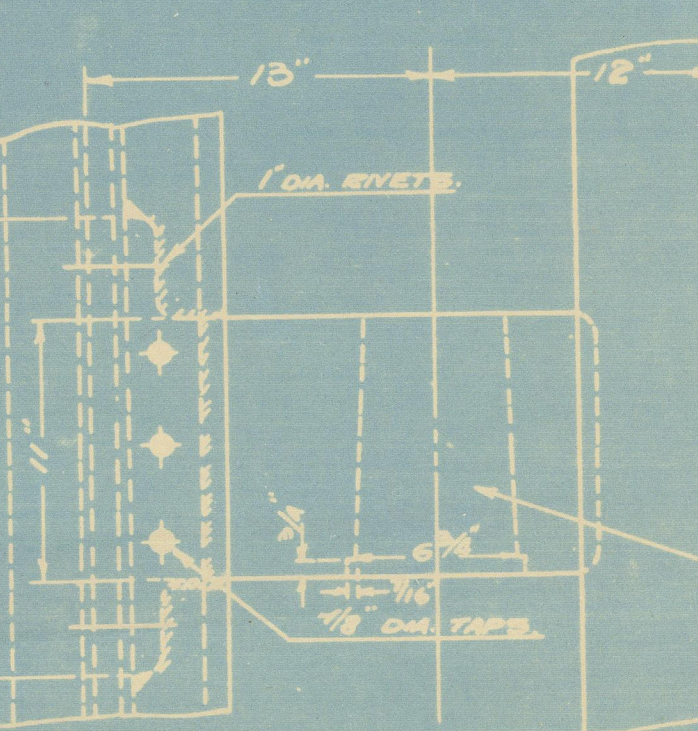
PLAN AT BOTTOM ARM.
SCALE: 1/8" = 1 FOOT.

SECTION THRO' BASE OF
RUDDER
LOOKING FORWARD.

ELEVATION OF STEER SIDE
SHOWING DETAILS OF PLATING.

DETAIL OF CENTRE ARM.

SCALE: 1/8" = 1 FOOT.

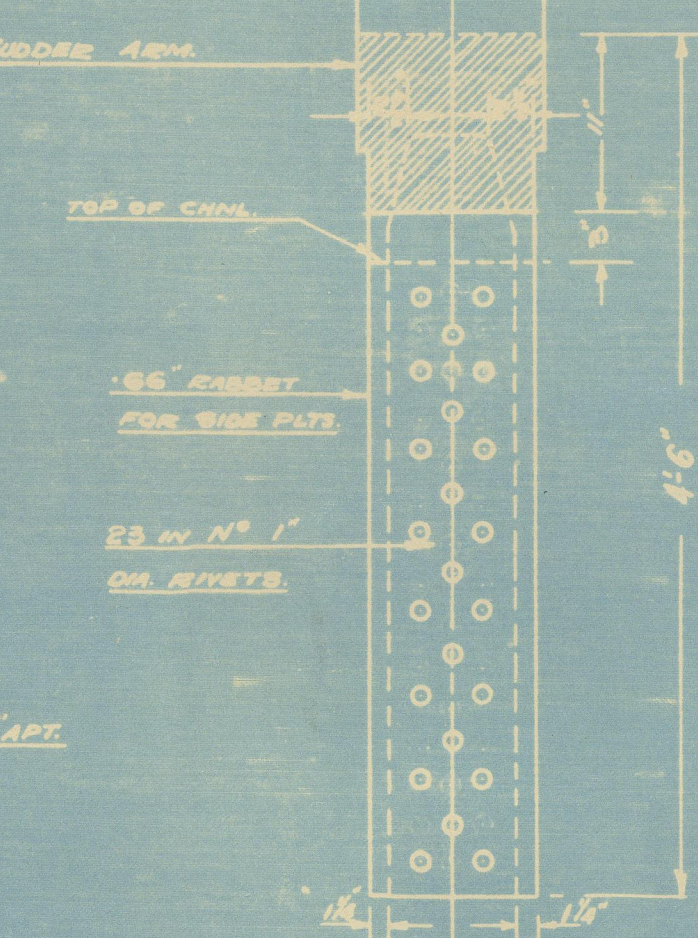


DETAIL OF VERTICAL SCARPHED COUPLING.

SCALE: 1/8" = 1 FOOT.

SECTION ON 'B-B'
IN WAY OF CASTINGS ONLY.

SCALE: 1/8" = 1 FOOT.



SECTION THRO' THUMB
FOR LIFTING EYEBOLT.

SCALE: 1/8" = 1 FOOT.



Messrs Smiths Dock Co. Ltd.

Ship No. 1212

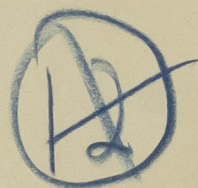
Rudder Plan.

all-elfoam

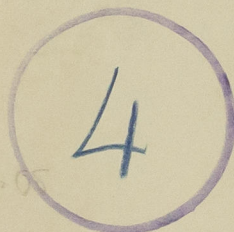


MIDDLEBROUGH

REPORT No. 19490



RECORDS DEPT.
LONDON



003275-003291-0174



© 2020

Lloyd's Register
Foundation

Messrs. Smiths Dock Co. Ltd

Ship No. 1212.

Rudder.

This vessel is a duplicate of
Hawthorn Leslie's Ship No 700.

003275-003281-0174



© 2020

Lloyd's Register
Foundation