

Lloyd's Register of Shipping.

SURVEYS FOR FREEBOARD.

(CONDITIONS OF ASSIGNMENT.)

Ship's Name  
M/s "LA PLATA"

Official Number  
8559

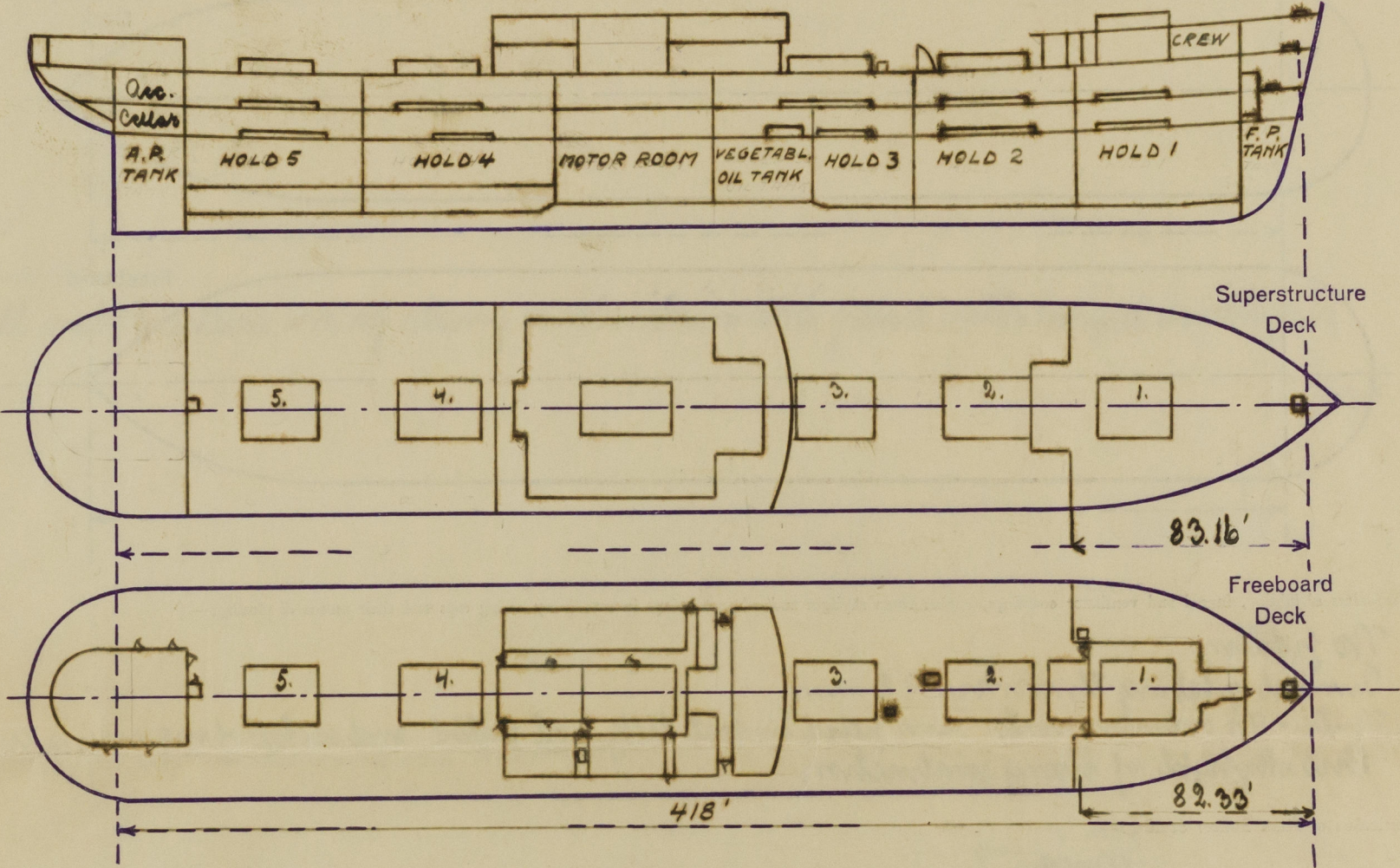
Nationality and Port of Registry  
Swedish, Stockholm.

Port of Survey  
Malmö

Surveyor's Signature  
Aslundén A. Börning

Date of Survey  
Whilst building.

Disposition and dimensions of superstructures, trunks, deckhouses and machinery casings to be inserted in the diagrams and tabular statement:—



Particulars of Superstructures, Trunks, Casings, Deckhouses.

	Coaming mm.	Plating mm.	Stiffeners mm.	Spacing mm.	End Attachments of Stiffeners	Size of Openings mm.	Height of Sills mm.	Height of Casings
Poop Bulkhead .....								
Raised Quarter Deck Bulkhead .....								
Bridge, After Bulkhead .....								
Bridge, Forward Bulkhead .....								
Forecastle Bulkhead (on top of main deck)	75 x 9 FB	8	75 x 50 x 7 L	550 - 600	-	1550 x 650	460	8.0'
Trunk, Aft .....								
Trunk, Forward .....								
Exposed Machinery Casings on Free- board or Raised Quarter Decks .....								
Exposed Machinery Casings on Super- structure Deck (boat deck) .....	75 x 75 x 8 L	7.5	60 x 50 x 7.5 L	710	Boats. top.	None	380	8.0'
Machinery Casings within Superstruc- tures not fitted with Class I Closing Appliances .....	75 x 75 x 8 L	6.5	60 x 50 x 7.5 L	710	Cont. "	1550 x 650	380	8.4"
Deckhouses on Main Deck Ship .....	150 x 10 FB	7.5	60 x 50 x 7.5 L	650 - 1000	-	1550 x 750	460	8.4" 8.0'
	150 x 10 FB	10	125 x 65 x 8.12 L	780	-	None	-	8.4" 8.0'

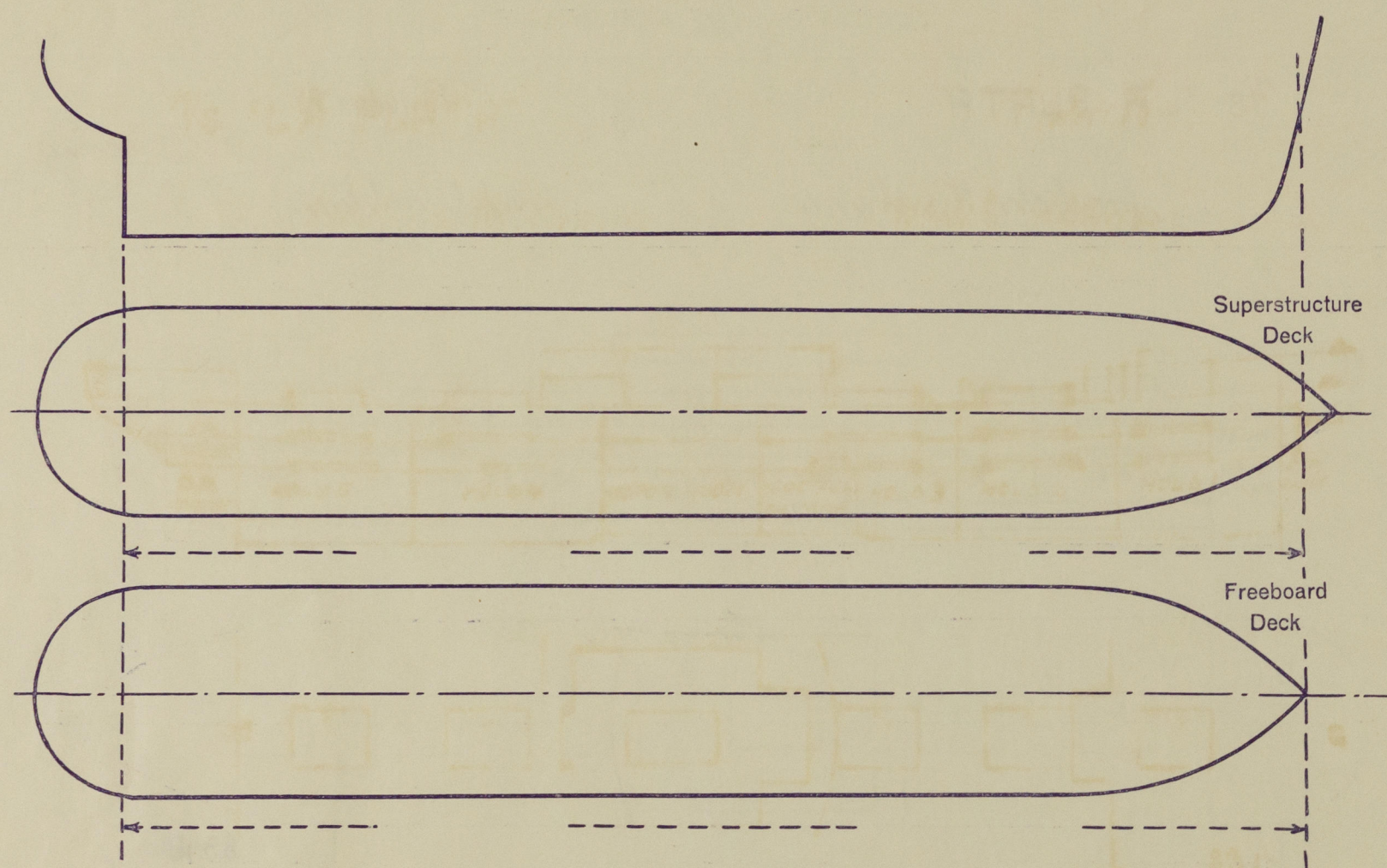
Particulars of Closing Appliances (state if capable of being manipulated from both sides).

Poop Bulkhead .....	
Raised Quarter Deck Bulkhead .....	
Bridge, After Bulkhead .....	
Bridge, Forward Bulkhead .....	
Forecastle Bulkhead .....	Hinged wood doors, operated from both sides.
Exposed Machinery Casings on Free- board or Raised Quarter Decks .....	
Exposed Machinery Casings on Super- structure Decks .....	Hinged steel doors, operated from both sides.
Machinery Casings within Superstruc- tures not fitted with Class I Closing Appliances .....	Strong portable steel covers are supplied for protection, in heavy weather, of the hatch doors in the sides of the deck transverse bulkheads.
Deckhouses on Main Deck Ship .....	Hinged wood doors, operated from both sides.



## PARTICULARS OF PROTECTION TO OPENINGS, ETC.

The following diagrams should be used to indicate the positions of cargo and coaling hatchways gangway, cargo and coaling ports, ventilators, companionways, etc., which would affect the seaworthiness of the ship:—



Particulars of fiddle, funnel and ventilator coamings, engine room skylight and other openings in machinery casing tops and their means of closing:—

No fiddling.  
Funnel plating thickness 7.5 mm.  
Vents: No ordinary vents. Vents fitted on boat deck, port & starboard, and on top of eng. casing, centre.  
Plat. skylight of strong construction.

Particulars of Flush Bunker Scuttles:—

None.

Particulars of Companionways:—

Deck house aft: Openings 1550 x 650 mm. Hgt. of sills above stl. dk. 460 mm. Wood doors, operated from both sides.  
To main space: " 1400 x 600 mm. " " " 520 mm. Steel " " " " "  
Cellar: " 1500 x 600 mm. " " " 460 mm. " " " " "  
To main aft: " 1180 x 540 mm. " " " 460 mm. " " " " "  
To ref. hold fore: " 1240 x 600 mm. " " " 610 mm. " " " " "

Particulars of Ventilators in exposed positions on freeboard and superstructure decks:—

Main. decks: Diam. 12" x 18". Thickness 9 mm. to 6.5 mm. & 10 mm. to 6.5 mm. Height 720 mm. Flanged.  
" 15" x 18" " 10 mm. to 6.5 mm. " 2400 mm.  
" 24" " 10 mm. " 3000 mm.  
" 24" " 10 mm. to 6.5 mm. " 2460 mm.  
Sub. decks: " 6" x 15" " 9 mm. & 10 mm. " 915 mm.  
" 18" x 24" " 10 mm. to 6.5 mm. " 2400 mm.

All vent. coamings are electrically welded to the decks and all are provided with means for closing.  
Thickness of plating of air inlets for refing. Vents 7.5 mm.

Particulars of Air Pipes in exposed positions on freeboard, raised quarter, or superstructure decks:

Freeboard deck: Gunwales 950 mm. in height, provided with means for closing.  
Sub. deck: " 700-920 mm. " " " " " " " " "

Particulars of Gangway Cargo and Coaling Ports:—

None.

La Plata.

Particulars of Scuppers and Sanitary Discharge Pipes:—

No overboard scuppers are fitted below the free. deck.  
Sanitary discharge pipes from fore. space and from deck house amidships are led overboard about 9" above 2nd deck and provided with storm valves.  
Sanitary discharge pipes from accommodations aft are led overboard about 4' below the 2nd deck and fitted with two automatic non-return valves, both always accessible.

Particulars of Side Scuttles:—

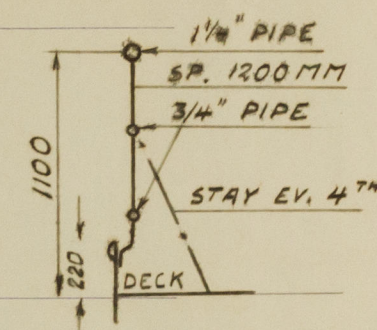
All side scuttles are of strong construction and fitted with hinged draughts.

Vertical distance of Sill of lowest Scuttle above top of keel

About 33'.

Particulars of Guard Rails:—

Open rails except abreast deck house amidships, where bulwarks of strong construction and 1150 mm. in height is fitted.



Particulars of Gangways, Lifelines, etc.:—

None.

## Particulars of Freeing Arrangements.

	Length of Bulwark	Height of Bulwark	Size of Freeing Ports	Number each side	Area each side	Rule area each side
After Well .....						
Forward Well .....						

State position of each freeing port ..... } After Well:—  
(F. and A. position and height above deck edge) } Forward Well:—

State whether the freeing ports are fitted with shutters, bars, or rails, and give particulars of such:—

Additional area where sheer is less than standard.



PARTICULARS OF PROTECTION TO OPENINGS, ETC.

Hatchways on Freeboard and Superstructure Decks.									
Description of Hatchway	Intr.	Inboard deck				Intr.	Intr.	Intr.	Intr.
	No. 1	No. 2	No. 3 & 4	No. 5	S. Peak	Intr. dke. home	Intr. dke. home	Intr. dke. home	Intr.
Dimensions of Hatchway	7810x5400	9230x5400	8520x5400	7810x5400	1000x1250	750x850	825x725	950x1350	
COAMINGS	Height above Deck	815				230			
	Thickness	Ends	11			9	8	460	380
		Sides	11			9	8	7.5	10
	Stiffeners	150x75x10 L						7.5	10
	Brackets, Stays	2	3	2					
HATCH BEAMS	Number	5							
	Spacing	1300	1540	1420	1300				
	Scantling and Sketch	200x15							
		285-400x8.5	245-260x8.5	210-225x8					
	Bearing Surface	75							
FORE AND AFTERS	Number								
	Spacing								
	Unsupported Lengths								
	Scantling* and Sketch								
	Bearing Surface								
HATCH COVERS	Material	Wood.							
	Thickness	75							
	How fitted	F. & A.							
	Bearing Surface	65							
						45			
Spacing of Cleats		max. 600			Clamps				
Number of Tarpaulins		3			1				

\*) Are wood fore and afters steel shod at all bearing surfaces? ☒

Are tarpaulins in good condition and in accordance with rule requirements? *yes.*

Are battens and wedges efficient and in good condition? *yes.*

Are lashings provided in accordance with rule requirements? *yes.*

Particulars of any special features:— *The vessel is electrically welded.*

Endorsement at first surveys and at surveys for renewal of Certificate:—

The fittings and appliances are in accordance with the particulars shown on this form (or as now modified) and are in good condition.

