

Nos 11749.

**SINGLE SCREW MOTOR TANKER**

**SCANTLINGS IN WAY OF OIL TANKS**

**DIMENSIONS:- 460'-0" B.P. x 59'-0" M.L.P. x 34'-0" M.L.D.**

**TO CLASS LLOYDS 100A1 \* "CARRYING PETROLEUM IN BULK"**

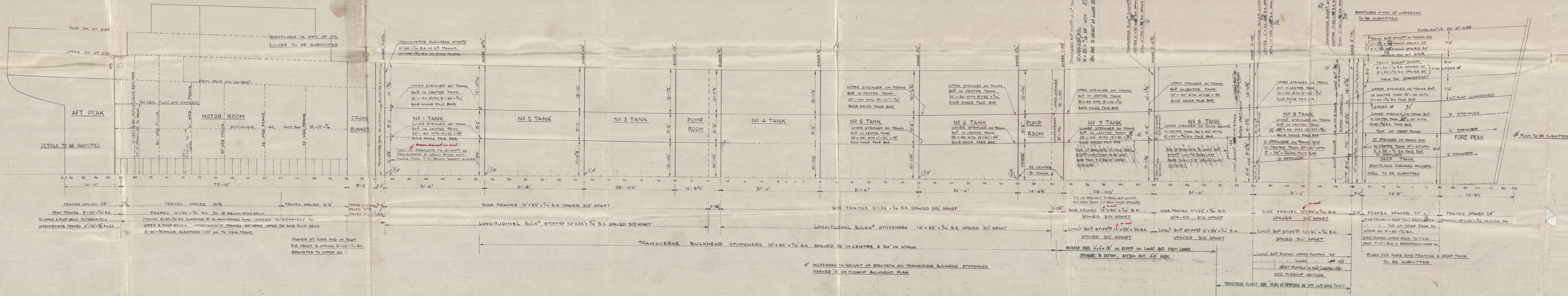
**LONGITUDINAL FRAMING AT BOTTOM AND AT DECK**

**SCALE:- 1/8" = ONE FOOT**

**ALL BULB ANGLE SECTIONS ARE N.B.S.**

NOTE:- SCANTLINGS OF TRANSVERSE BULKHEAD STIFFENERS AND STRINGERS AND THICKNESS OF TRANSVERSE AND LONGITUDINAL BULKHEAD PLATING WHERE NOT OTHERWISE INDICATED TO BE AS APPROVED ON BULKHEAD PLAN AND MIDSHIP SECTION. BULKHEAD BOUNDARY BARS AS PER RULE.

FLA ARMS OF TRANSVERSE BULKHEAD STRINGER BRACKETS TO LONGITUDINAL BULKHEAD TO BE SUITABLY INCREASED WHEN STRINGERS ARE INCREASED CLEAR OF MIDSHIP.



Verified by plan  
and approved  
plan approved  
Signed  
13.3.12  
W.T.  
10.10.12  
1/10/12  
4.2



*[Faint pencil sketch of a diagonal line with small cross-ticks]*



© 2020

Lloyd's Register  
Foundation





HW 11745

2

Scanting away of all tanks

"Neritina" \*

Lbd Ls Rpr No 67758

1174 Neritina  
GLASGOW REPORT No. 67848



PROFILE



© 2020

003307-003310-0001

Lloyd's Register  
Foundation