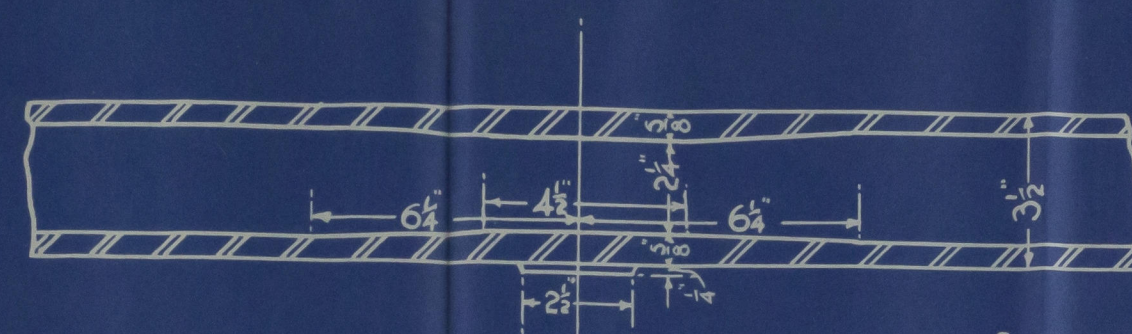


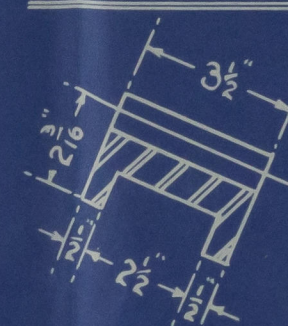
THOMAS REID & SONS (PAISLEY) LTD.
DATE 15.11.36
ENGINEERS, PAISLEY

messrs
Lloyds Register of Shipping
Glasgow

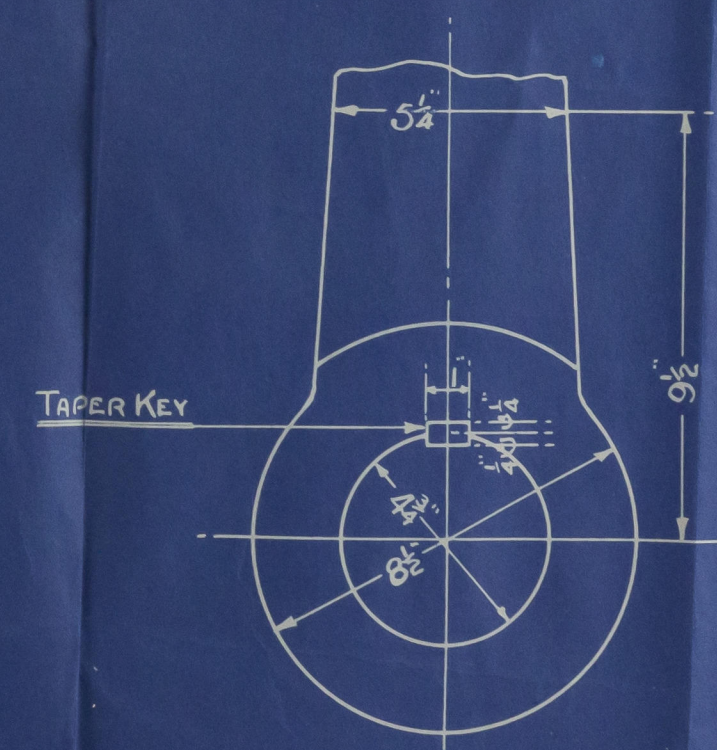
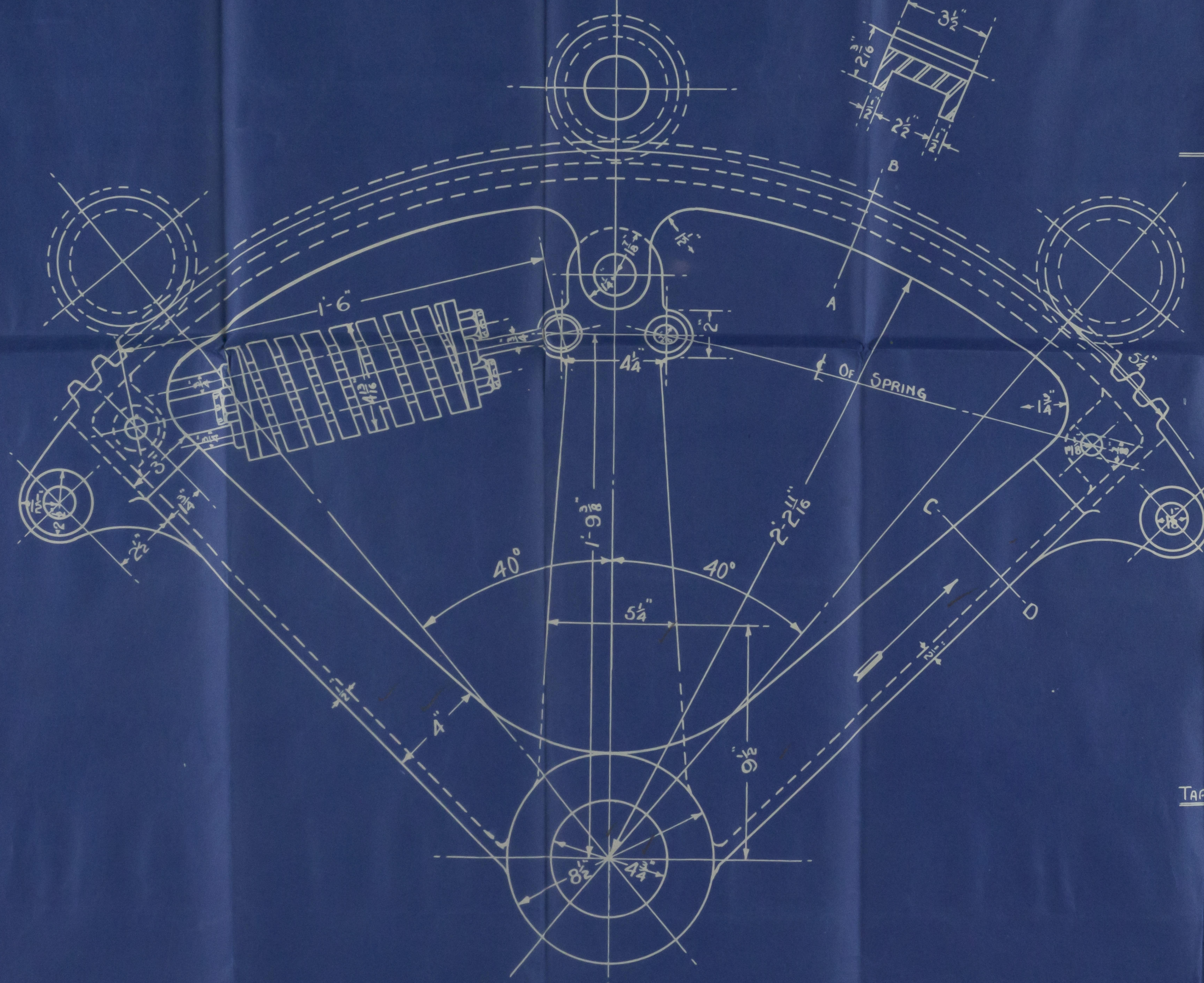
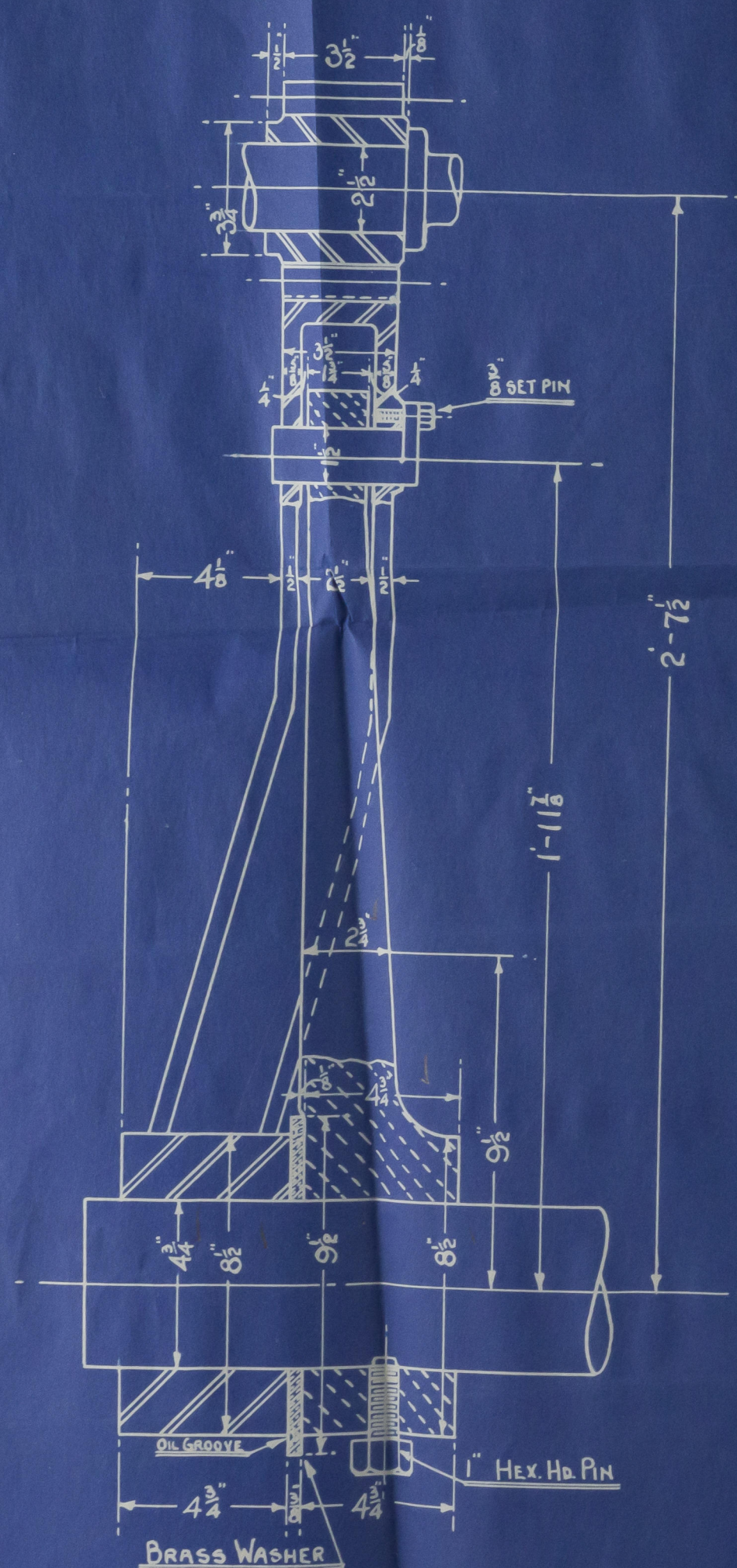
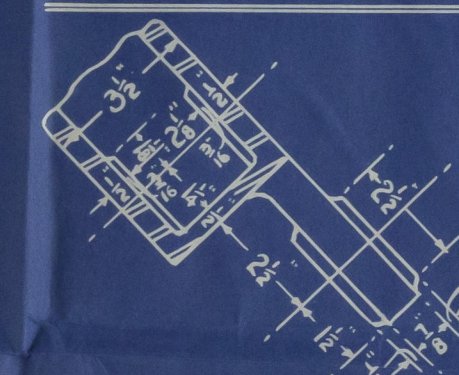
— SCALE 3" = ONE FOOT —



= SECTION ON LINE "AB"



SECTION ON LINE C.D. IN DIRECTION OF ARROW



APPROVED — TILLER BOSS

| | P.C.D. | T. | P | θ^B | O.P. | REMARKS |
|---------------|----------------------|-----|-------------------|-------------------|-----------------------|-----------------|
| SPUR QUADRANT | 4'-9 $\frac{3}{4}$ " | 132 | 1 $\frac{3}{8}$ " | 3 $\frac{3}{8}$ " | 4'-10 $\frac{3}{8}$ " | CAST STEEL M.C. |
| " PINION | 5 $\frac{1}{4}$ " | 12 | 1 $\frac{3}{8}$ " | 3 $\frac{3}{8}$ " | 6 $\frac{1}{8}$ " | " " " " |

TILLER-FORGED STEEL

6154-5

(8)

Quadrant & Tiller Co

421-2

QUADRANT & TILLER

Nº 421. "THE PRESIDENT"

GLASGOW REPORT No. 56986

Nº 422: "THE EARL."

GLASGOW REPORT No. 57137



© 2020

Lloyd's Register
Foundation

003321-003327-0208