

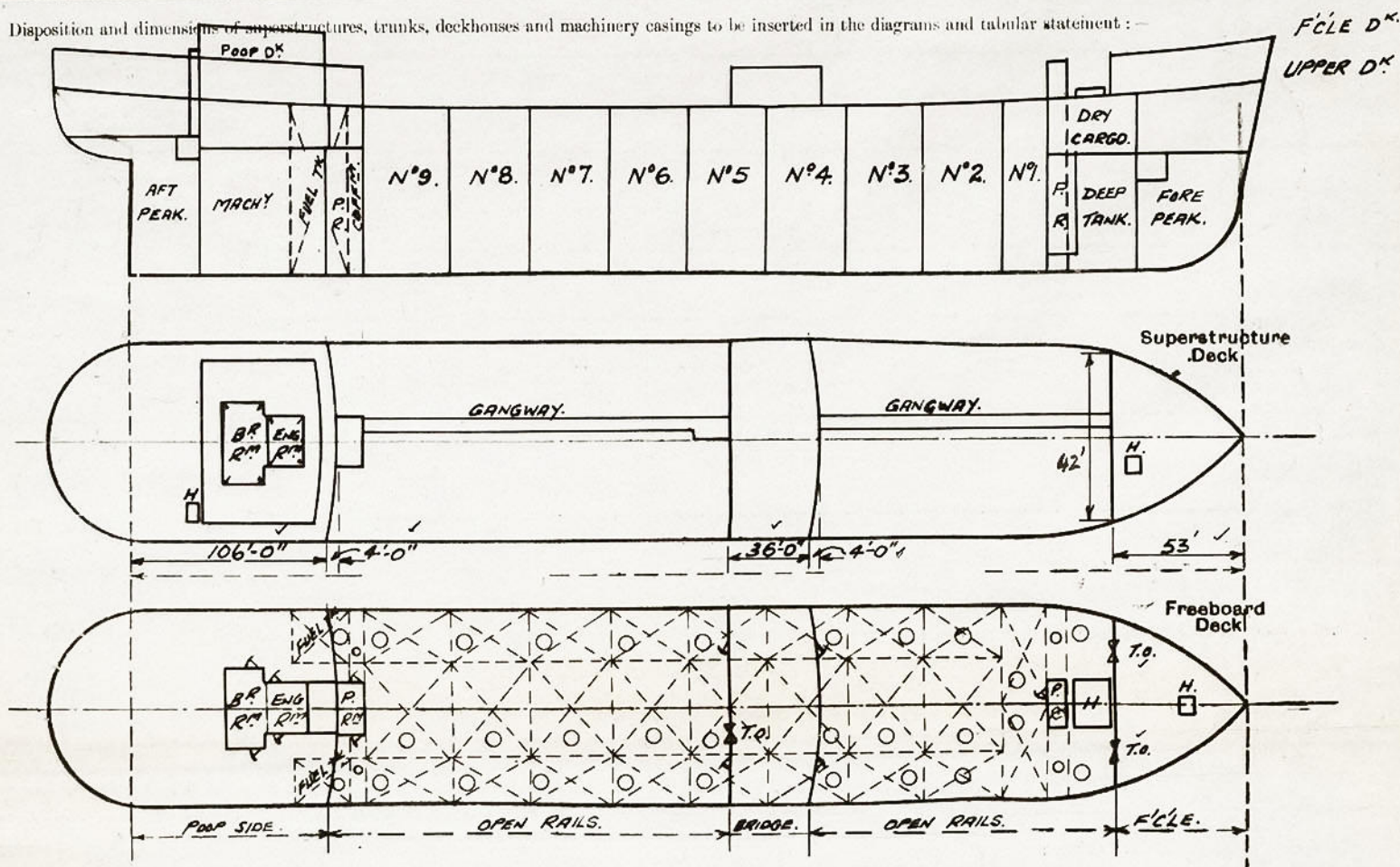
Lloyd's Register of Shipping.

SURVEYS FOR FREEBOARD.

(CONDITIONS OF ASSIGNMENT.)

Ship's Name **TROCHURUS. Ex COUNCIL CREST.**Port of Survey **Cardiff.**Official Number **181823.**Surveyor's Signature **James Sullivan**Nationality and Port of Registry **British London**Date of Survey **18. 12. 47. & subsequently.**

Disposition and dimensions of superstructures, trunks, deckhouses and machinery casings to be inserted in the diagrams and tabular statement:



Particulars of Superstructures, Trunks, Casings, Deckhouses.

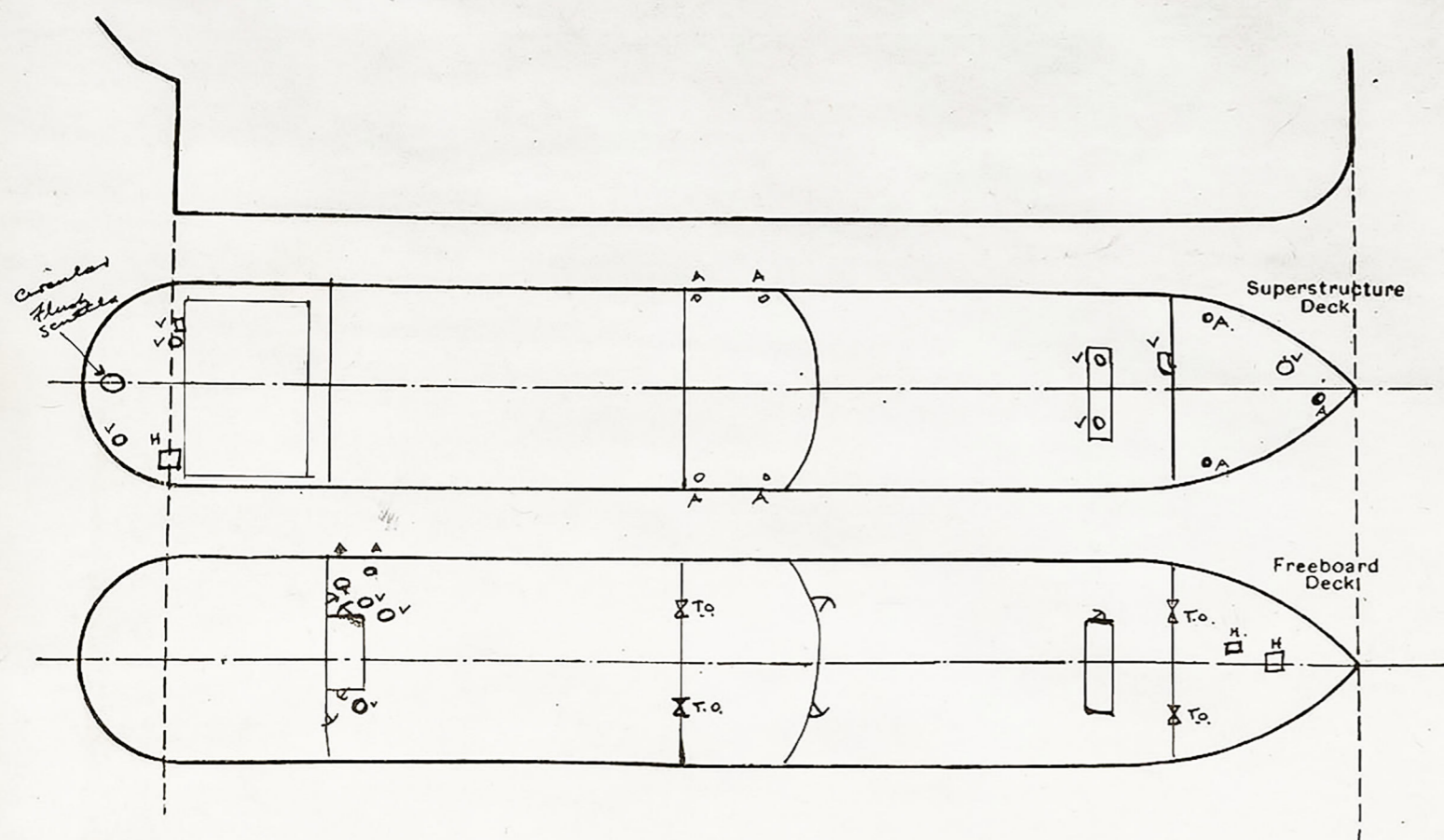
| | Coaming | Plating | Stiffeners | Spacing | End Attachments of Stiffeners | Size of Openings | Height of Sills | Height of Casings |
|---|---------|---------|---|---------|-------------------------------|------------------|-----------------|-------------------|
| Poop Bulkhead ... | .44 | .44 | 9x4 flanged plates | 30" | welded top & bottom | 22 5'-0" x 2'-4" | 18" | 8'-0" |
| Raised Quarter Deck Bulkhead ... | | | | | | | | |
| Bridge, After Bulkhead ... | .30 | .30 | 4x3 angle riv. | 30" | welded top & bottom | 2 4'-1" x 3'-1" | 24" | 8'-0" |
| Bridge, Forward Bulkhead ... | .44 | .44 | 9x4 flanged plates | 30" | ditto. | | | |
| Forecastle Bulkhead ... | .38 | .38 | 4x3 riv. angle | 30" | BKT top, welded B.T.M. | 2 4'-9" x 3'-1" | 24" | 10'-0" |
| Trunk, Aft ... | None | | | | | | | |
| Trunk, Forward Bulkhead ... | | | | | | | | |
| Pump Rm. Aft | .38 | .38 | 9x3 1/2 fl. plates T | 28" | welded top & bottom | 22 5'-0" x 2'-4" | 18" | 8'-0" |
| Exposed Machinery Casings on Freeboard or Raised Quarter Deck For | PR. .38 | .38 | 5x3 1/2 riv. a. Fore-B.H. 3 1/2 x 2 1/2 - aft - | 27" | welded top only. | 12 5'-0" x 2'-4" | 18" | 8'-0" |
| Exposed Machinery Casings on Superstructure Decks ... | | | | | | | | |
| Machinery Casings within Superstructures not fitted with Class I Closing Appliances ... | None | | | | | | | |
| Deckhouses on Flush Deck Ships ... | None | | | | | | | |

Particulars of Closing Appliances (state if capable of being manipulated from both sides).

| | |
|---|--|
| Poop Bulkhead ... | Hinged steel W.T. Door (P.&S.) capable of being manipulated from both sides |
| Raised Quarter Deck Bulkhead ... | Hinged steel W.T. doors capable of being manipulated from both sides. |
| Bridge, After Bulkhead ... | Portable steel plates secured by hook bolts. |
| Bridge, Forward Bulkhead ... | Hinged steel W.T. doors capable of being manipulated from both sides. |
| Forecastle Bulkhead ... | Hinged steel W.T. doors capable of being manipulated from both sides. |
| Exposed Machinery Casings on Freeboard Raised Quarter Deck ... | Portable steel plates secured by hook bolts. |
| Exposed Machinery Casings on Superstructure Decks ... | Pump Rooms - Hinged steel W.T. doors capable of being manipulated from both sides. |
| Machinery Casings within Superstructures not fitted with Class I Closing Appliances ... | No openings. |
| Deckhouses on Flush Deck Ships ... | No openings |

PARTICULARS OF PROTECTION TO OPENINGS, ETC.

The following diagrams should be used to indicate the positions of cargo and coaling hatchways, gangway, cargo and coaling ports, ventilators, companionways, etc., which would affect the seaworthiness of the ship:—



Particulars of fiddle, funnel and ventilator coamings, engine room skylight and other openings in machinery casing tops and their means of closing:—

Fiddle openings fitted with gratings and hinged steel flaps. ✓

E.R. & B.R. ventilator and funnel coamings strongly constructed of steel. ✓

E.R. & Pump Room skylights strongly constructed of steel. ✓

Particulars of Flush Bunker Scuttles:—

Circular flush scuttles on Poop Deck to Bunker Store. Steel cover, bayonet type joint. Cover secured to deck underside by steel chain. ✓

Particulars of Companionways:— Pump Rooms — Hinged steel W.T. doors, manipulated from both sides, openings sill
Poop Deckhouse — plating steel, openings in sides and ends *5'0" x 2'4"*, sills *15"* with hinged steel W.T. doors manipulated from both sides.

Particulars of Ventilators in exposed positions on freeboard and superstructure decks:—

Forecastle Deck:— 2 — 12" diam. *36" high*

Upper Deck:—

3 — 24" diam. aft well
2 — 12" diam. top of Pump Room forward } *36" high*

Bridge Deck:—

4 — 12" diam.

Poop Deck:—

one 12" x 18" } mechanical ventilation *24" high*
one 18" diam. }
one 12" diam. vent. air pipe. }

Efficient closing appliances provided for all ventilator coamings.

Coamings exceeding 36" in height suitably supported. ✓

Particulars of Air Pipes in exposed positions on freeboard, raised quarter, or superstructure decks:—

Forecastle Deck:—

one 4" diam. 30" high. ✓
2 — 2" diam. — 30" high. ✓

Upper Deck:—

2 — 4" diam. fore well 36" high.
2 — 6" diam. to hold. 36" high.

Poop Deck:—

one 12" Vent. air pipe 36" high.

Efficient closing appliances provided for all air escape pipes. ✓

Particulars of Gangway Cargo and Coaling Ports:—

None. ✓

TROCHURUS.

Particulars of Scuppers and Sanitary Discharge Pipes:—

Scuppers and sanitary discharges from Poop accommodation led overboard below the freeboard deck and fitted with substantially constructed storm valves at ship's side. ✓

Scuppers and sanitary discharges from Midship accommodation led overboard above the freeboard deck and fitted with substantially constructed storm valves at ship's sides. ✓

Particulars of Side Scuttles:—

Poop Tween Decks:— side scuttles of strong construction fitted with hinged deadlights permanently attached. ✓

Vertical distance of Sill of lowest Side Scuttle above top of keel

Particulars of Guard Rails:—

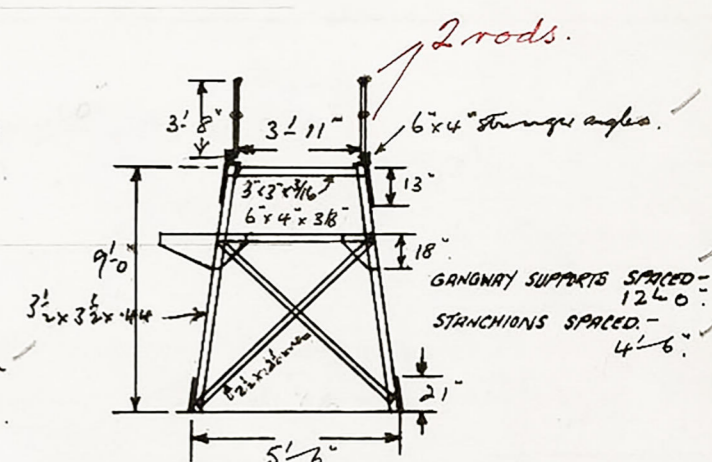
At sides of Upper, Forecastle & Poop Decks

Stanchions 3'-6" in height spaced 5'-0" apart and fitted with 3 rails



Particulars of Gangways, Lifelines, etc.:—

Fore and aft gangway fitted between the forecastle and bridge deck and bridge and poop deck. *welded construction with chequered steel walkway.* ✓



Particulars of Freeing Arrangements.

| | Length of Bulwark | Height of Bulwark | Size of Freeing Ports | Number each side | Area each side | Rule area each side |
|------------------|---------------------|-------------------|-----------------------|------------------|----------------|---------------------|
| After Well ... | <i>guard rails.</i> | | | | | |
| Forward Well ... | <i>- do -</i> | | | | | |

State position of each freeing port ... (After Well:—

(P. and A. position and height above deck edge) (Forward Well:—

State whether the freeing ports are fitted with shutters, bars, or rails, and give particulars of such:—

Additional area where sheer is less than standard.

PARTICULARS OF PROTECTION TO OPENINGS, ETC.

| Description of Hatchway | HATCHWAYS ON FREEBOARD AND SUPERSTRUCTURE DECK | | | | | | | | STR. OTHER SMALL HATCHES | | |
|-------------------------|--|---------------|--------------|---------------|----------------|---------------|------------------|--------------|--------------------------|-------------|-------------|
| | TO STORE | TO CARGO HOLD | TO OIL TANKS | TO FORE & AFT | TO C/O'S | TO DEEP TANKS | TO FORWARD TANKS | TO AFT TANKS | TO STORE | TO FORWARD | TO AFT |
| Dimensions of Hatchway | 3'1" x 3'1" | 11'3" x 14'9" | 14'8" diam | 24" diam | 24" diam | 24" diam | 24" diam | 24" diam | 4'0" x 4'0" | 3'0" x 3'0" | 3'0" x 3'0" |
| COAMINGS | Height above Deck ... 30" | 30" | 30" | 30" | 30" | 30" | 30" | 30" | 24" | 24" | 24" |
| | Thickness60 | .60 | .60 | .60 | .60 | .60 | .60 | .60 | .60 | .60 | .60 |
| | Sides ... 3" | 3" | 3" | 3" | 3" | 3" | 3" | 3" | 3" | 3" | 3" |
| | Stiffeners ... 3" | 3" | 3" | 3" | 3" | 3" | 3" | 3" | 3" | 3" | 3" |
| | Brackets, Stays ... 3" | 3" | 3" | 3" | 3" | 3" | 3" | 3" | 3" | 3" | 3" |
| HATCH BEAMS | Number ... | Steel | Cover | with | 6 x 3 1/2" riv | | | | | | |
| | Spacing ... | NONE | NONE | NONE | NONE | NONE | NONE | NONE | NONE | NONE | NONE |
| | Scantling and Sketch ... | | | | | | | | | | |
| | Bearing Surface ... | | | | | | | | | | |
| FORE AND AFTERS | Number ... | NONE | NONE | NONE | NONE | NONE | NONE | NONE | NONE | NONE | NONE |
| | Spacing ... | | | | | | | | | | |
| | Unsupported Lengths ... | | | | | | | | | | |
| | Scantling and Sketch ... | | | | | | | | | | |
| | Bearing Surface ... | | | | | | | | | | |
| HATCH COVERS | Material ... | STEEL | STEEL | STEEL | STEEL | STEEL | STEEL | STEEL | STEEL | STEEL | STEEL |
| | Thickness ... | .50 | .50 | .50 | .50 | .50 | .50 | .50 | .50 | .50 | .50 |
| | How fitted ... | | | | | | | | | | |
| | Bearing Surface ... | | | | | | | | | | |
| Spacing of Cleats | | - | - | - | - | - | - | - | - | - | - |
| Number of Tarpaulins | | - | - | - | - | - | - | - | - | - | - |

*Are wood fore and afters steel shod at all bearing surfaces? -

Are battens and wedges efficient and in good condition? -

Are tarpaulins in good condition and in accordance with rule requirements? -

Are lashings provided in accordance with rule requirements? -

Particulars of any special features:-

All cargo oil tank hatch covers fitted with ullage doors 10" diameter of strong construction secured by strongbacks. ✓

Endorsement at first survey and at surveys for renewal of Certificate:-

The fittings and appliances are in accordance with the particulars shown on this form (or as now modified) and are in good condition.

MLD



© 2020

Lloyd's Register Foundation