

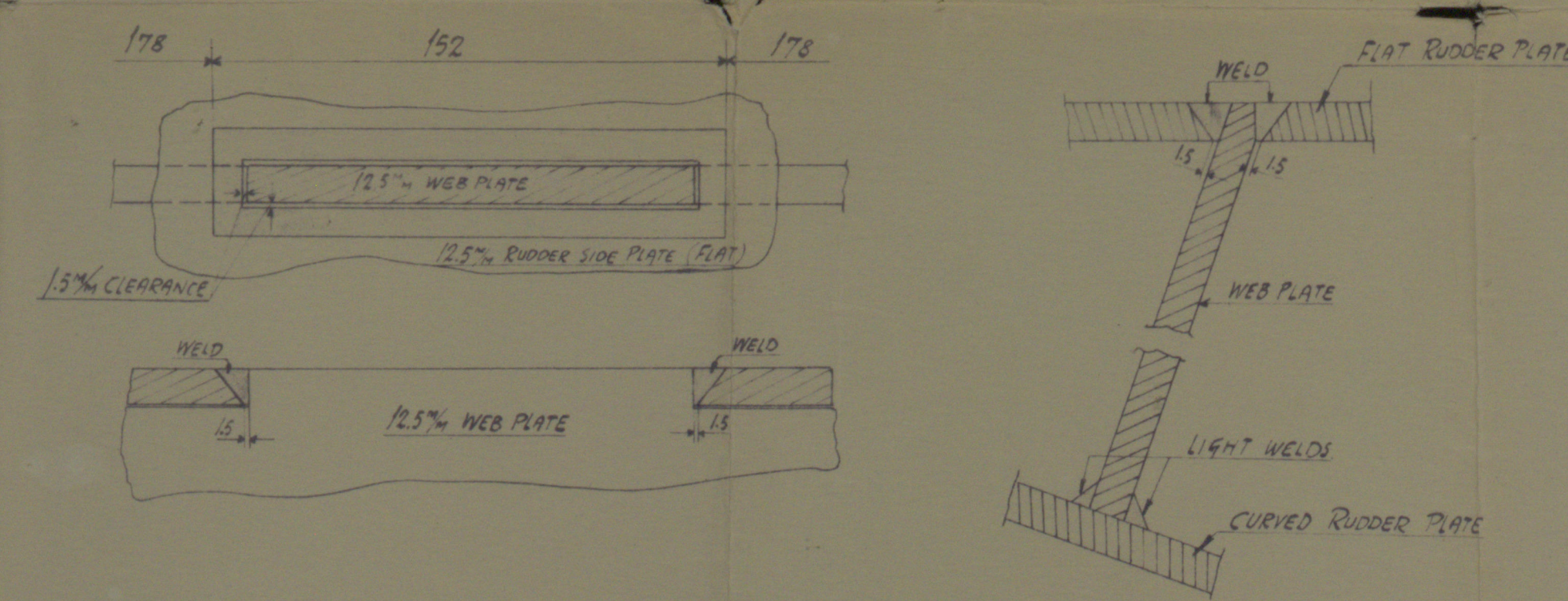
YARD No 57-
BALANCED REACTION RUDDER

SCALES 1/15, 1/10, 1/5

BRITISH LLOYD'S TEST

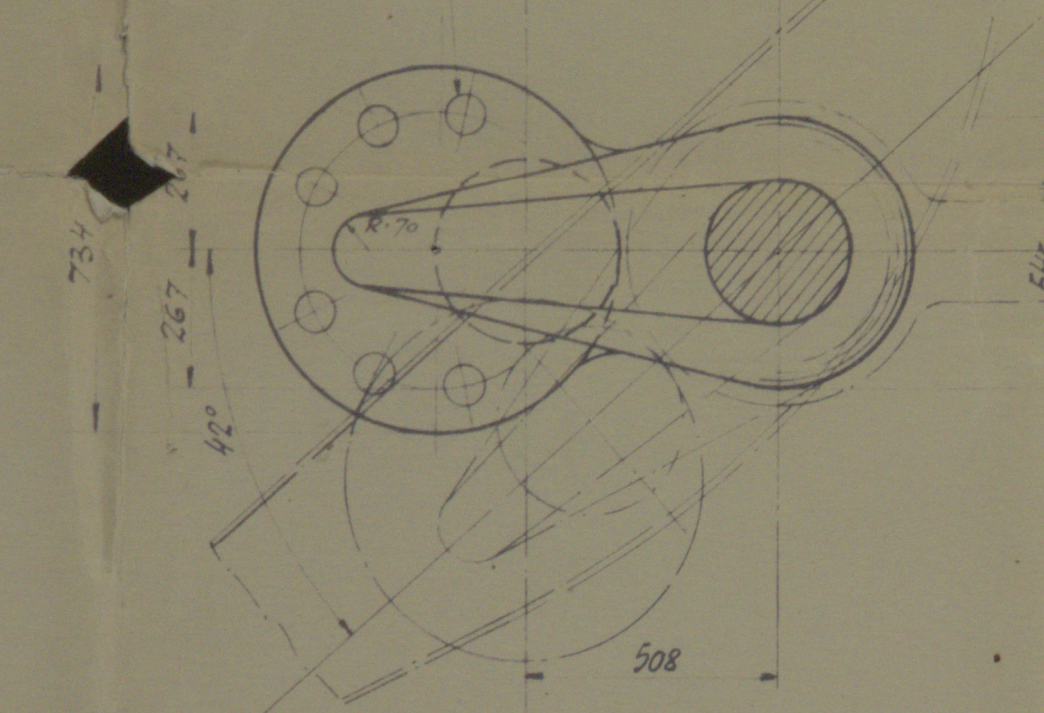
MAINPIECE OF FORGED STEEL.
RUDDERARMS OF CAST STEEL.
RUDDERARMS TO BE SHRUNK ON AND KEYED TO MAINPIECE
PINTLES OF STEEL WITH BRASS SLEEVES.
LIGNUM VITAE GUMMEL AND LOCKING PLATE.
RUDDER TO BE FILLED WITH GRANULATED CORK,
AND TO BE WATERTIGHT.
ADJUSTABLE BEARING TO BE FITTED TO
RUDDERHEAD IN WAY OF TORSION.
— DENOTES ELECTRIC WELDING.
(Sketch of 12. 12. 12.)

DETAILS SHOWING ELECTRIC WELDING OF HEELS TO RUDDER SIDE PLATES
SCALE 1/2

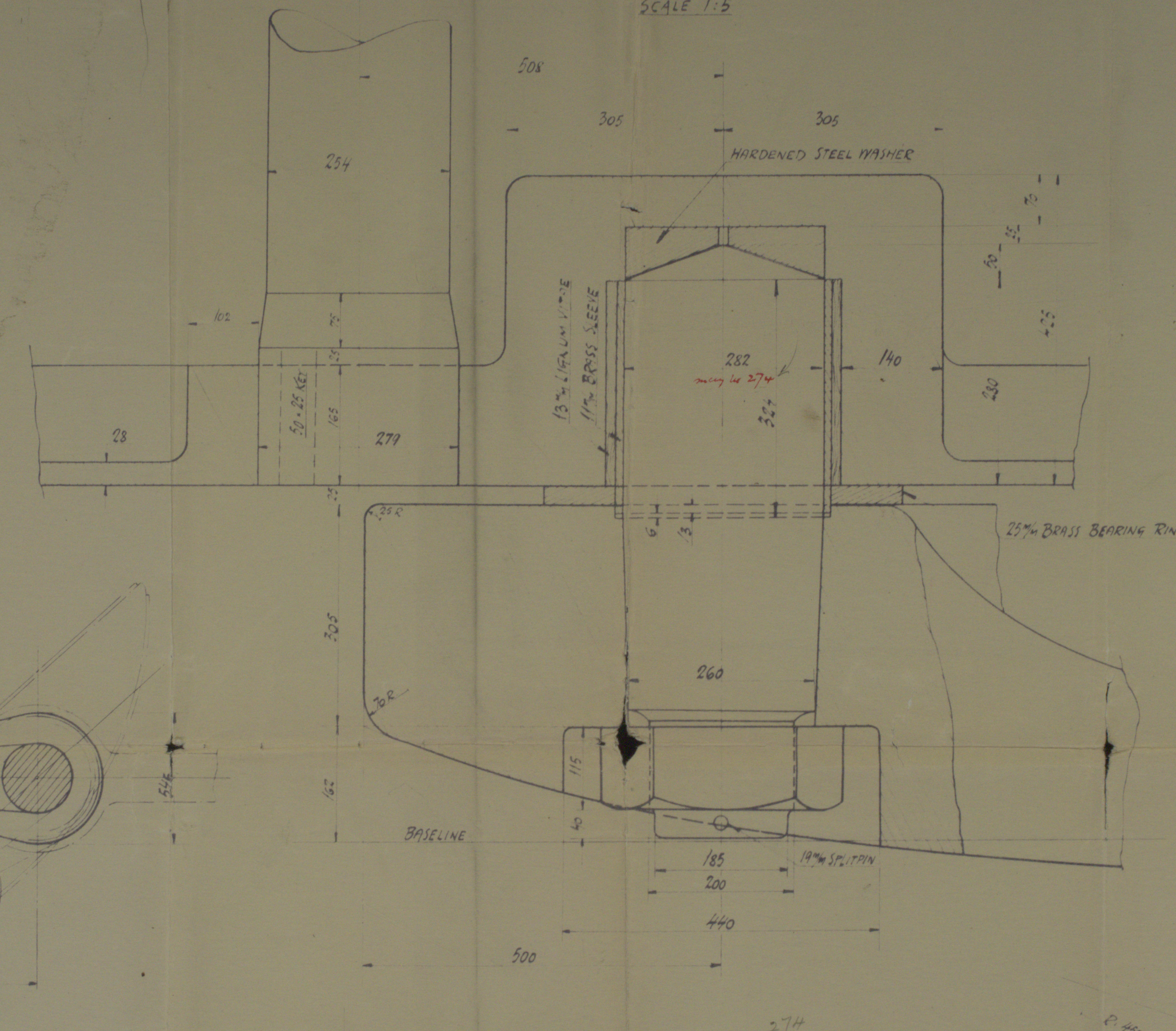


DETAIL OF COUPLING

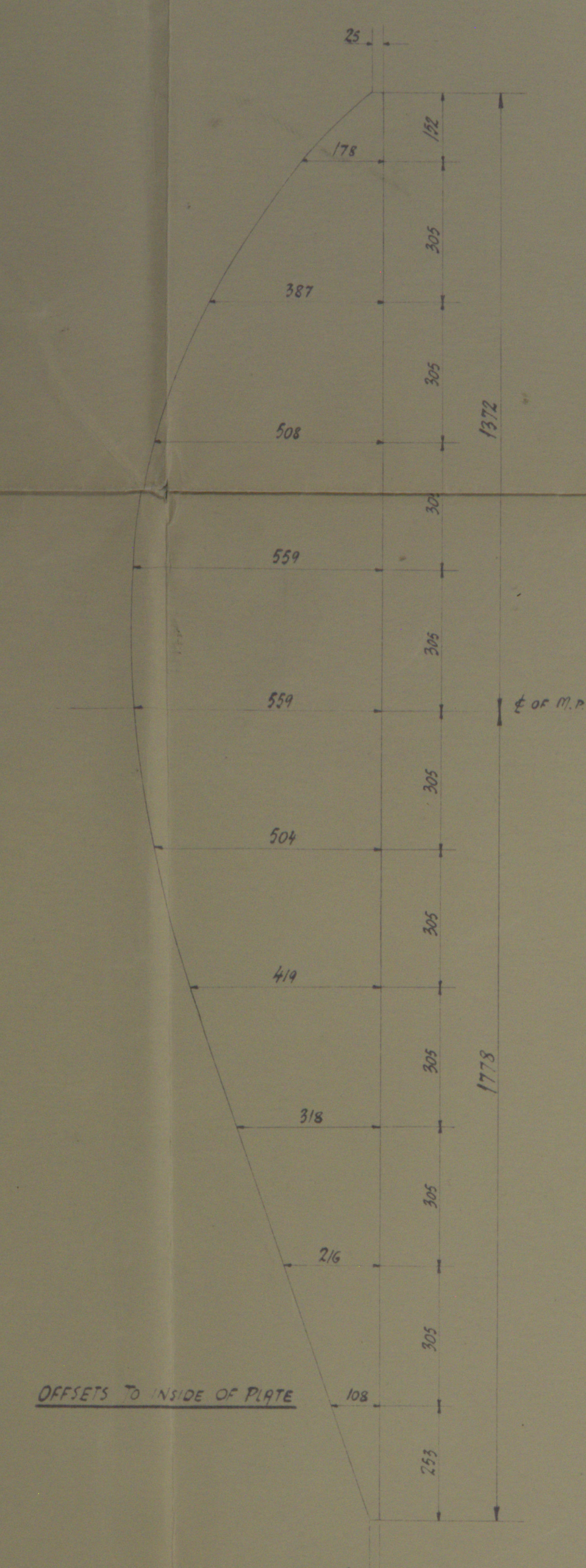
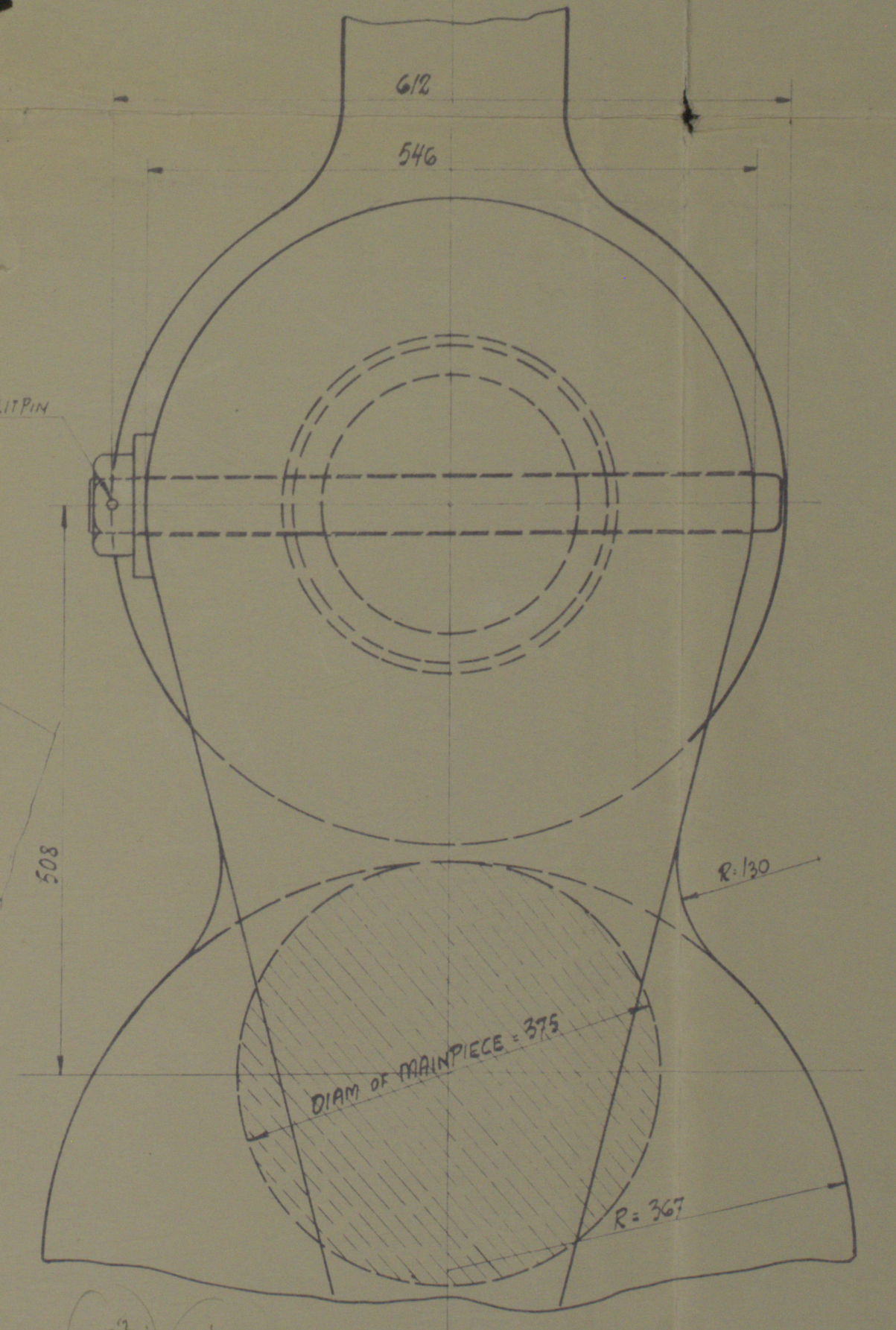
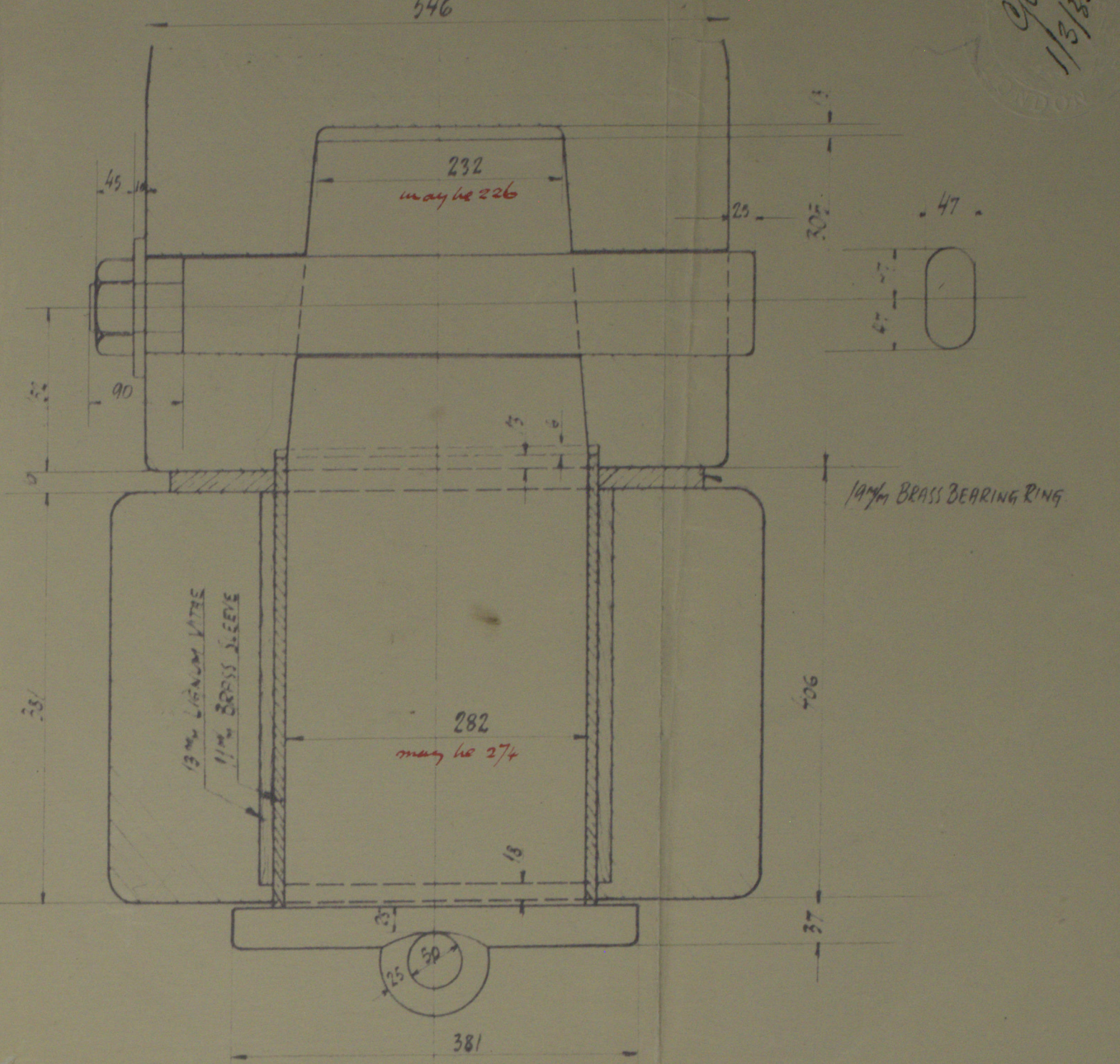
6. 26% DIA FITTED BOLTS



SKETCH OF HEEL GUDGEON
SCALE 1/5



SKETCH OF TOP PINTLE
SCALE 1/5



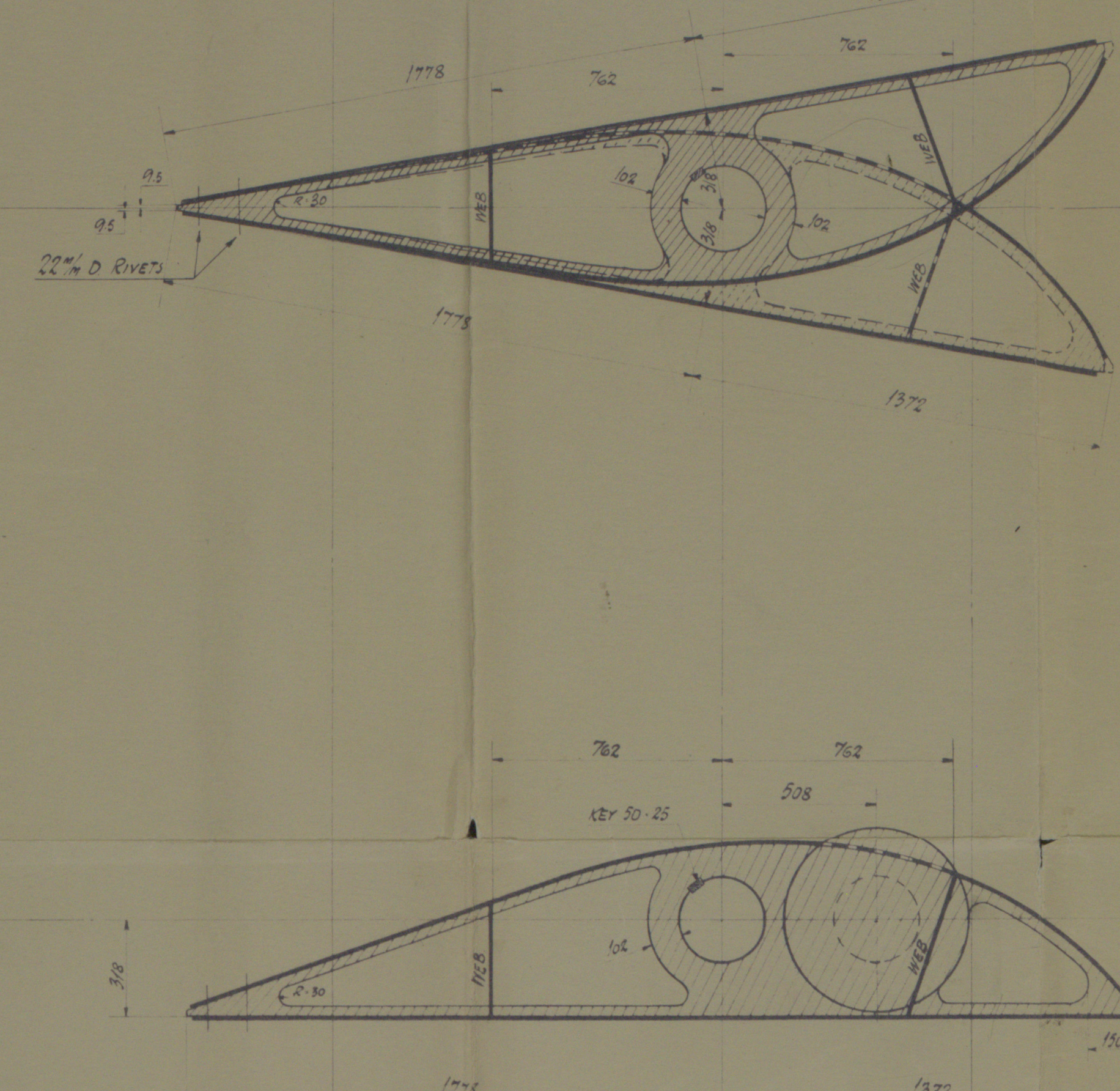
CURVATURE OF RUDDER ARMS
SCALE 1/10



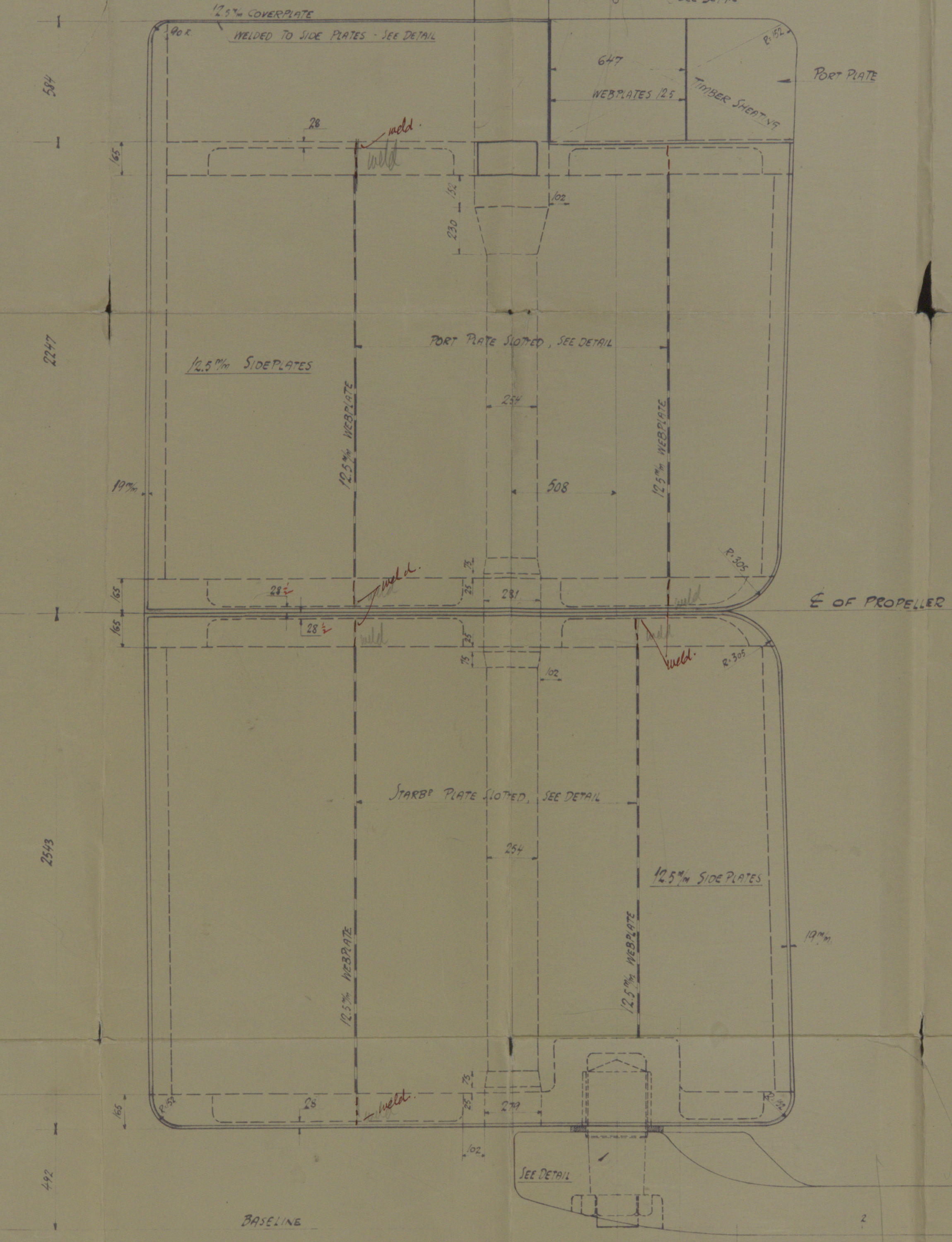
SECTION A
SECTIONS LOOKING FORWARD

W DENOTES WELDING
O DENOTES SLIT WELDING
V DENOTES SINGLE ROW 22% DIA RIVETS, SPACED 5 DIA

MILD STEEL STEEL (AT TAIL)
30 x 51-19 RIVETS TO
SIDE PLATES - 22% DIA RIVETS
SPACED 5 DIA 1/2\"/>



BEVEL AT TIP OF ARMS
LOOKING FORWARD
ZERO BEVEL AT MAINPIECE



ODENSE STAALSKIBSVÆRFT
W. A. P. HANSEN

57-51 W. Hansen
22

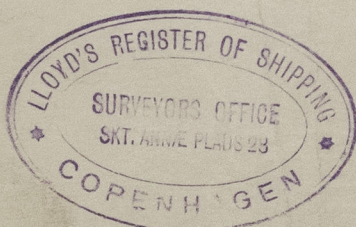
18. 10. 15
5. 2. 35
BALANCED REACTION RUDDER

Lloyd's Register
Foundation

003541-003548-0116

Yard No. 57.

Plan of Rudder.



57-58-65-71-72

m. s. "Laasdrucht" of Rotterdam.
Cpu. Report No. 10002.

m. s. - Haegh Haad of Isla.
Cpn. Report No. 10109.

m.s. Barendrecht of Rotterdam.
Eps. Report No. 10641.

ms. s. Stiklestad of Oslo.
Lpu. Report etc. 10696.

003341-003348-0116