

APPROVED BY LLOYDS
31ST OCT. 1935.

H.Kong Report No 8513.

M.V. "PAUA"
(RE-CONSTRUCTION)
MIDSHIP SECTION AND
O.T. TRANSVERSE BULKHEAD ETC -
SCALE 1/2" = 1 FOOT.

DIMENSIONS.
LENGTH 231'-0" B.P. BREADTH 36'-6" MLD. DEPTH 15'-0" (HARBOUR DK.)
TRUNK 21'-8" WIDE X 4'-6" HIGH

TO CLASS LLOYDS 100A1. "CARRYING PETROLEUM IN BULK."
SPECIAL NOTATION "LONGITUDINAL FRAMING AT BOTTOM AND DECK"
SCANTLINGS CLEAR OF OIL COMPARTMENTS TO BE SPECIALLY CONSIDERED.

ALL RIVETS TO BE 3/4" DIA. EXCEPT WHERE OTHERWISE MARKED
ALL NEW SECTIONS TO BE N.D.S.

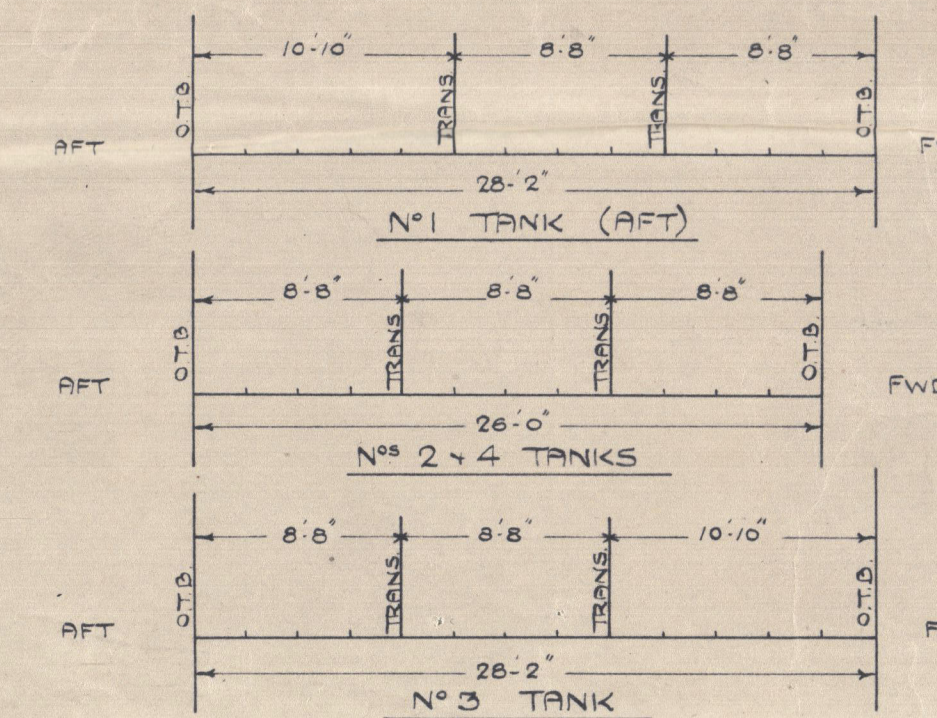
STRICTLY CONFIDENTIAL
NOTE: THIS DRAWING IS THE PROPERTY OF THE ANGLO-SAXON PETROLEUM CO. LTD.
AND IS ISSUED SUBJECT TO THE REQUIREMENTS OF THE SPECIFICATION
AND CONTRACT BEING COMPLIED WITH WITHOUT PREJUDICE
THE ANGLO-SAXON PETROLEUM CO. LTD.

Chas. E. Zulver
MARINE SUPERINTENDENT (C. ZULVER)
OCTOBER 1935.

EQUIPMENT.
THIRD POWER ANCHOR TO BE REPLACED BY AN ANCHOR OF 25 CWTs (STOCKLESS)
AND AN ADDITIONAL 15 FATHOMS OF 1 1/16" DIA. STUD LINK CABLE
TO BE SUPPLIED.

LLOYDS NUMERALS.

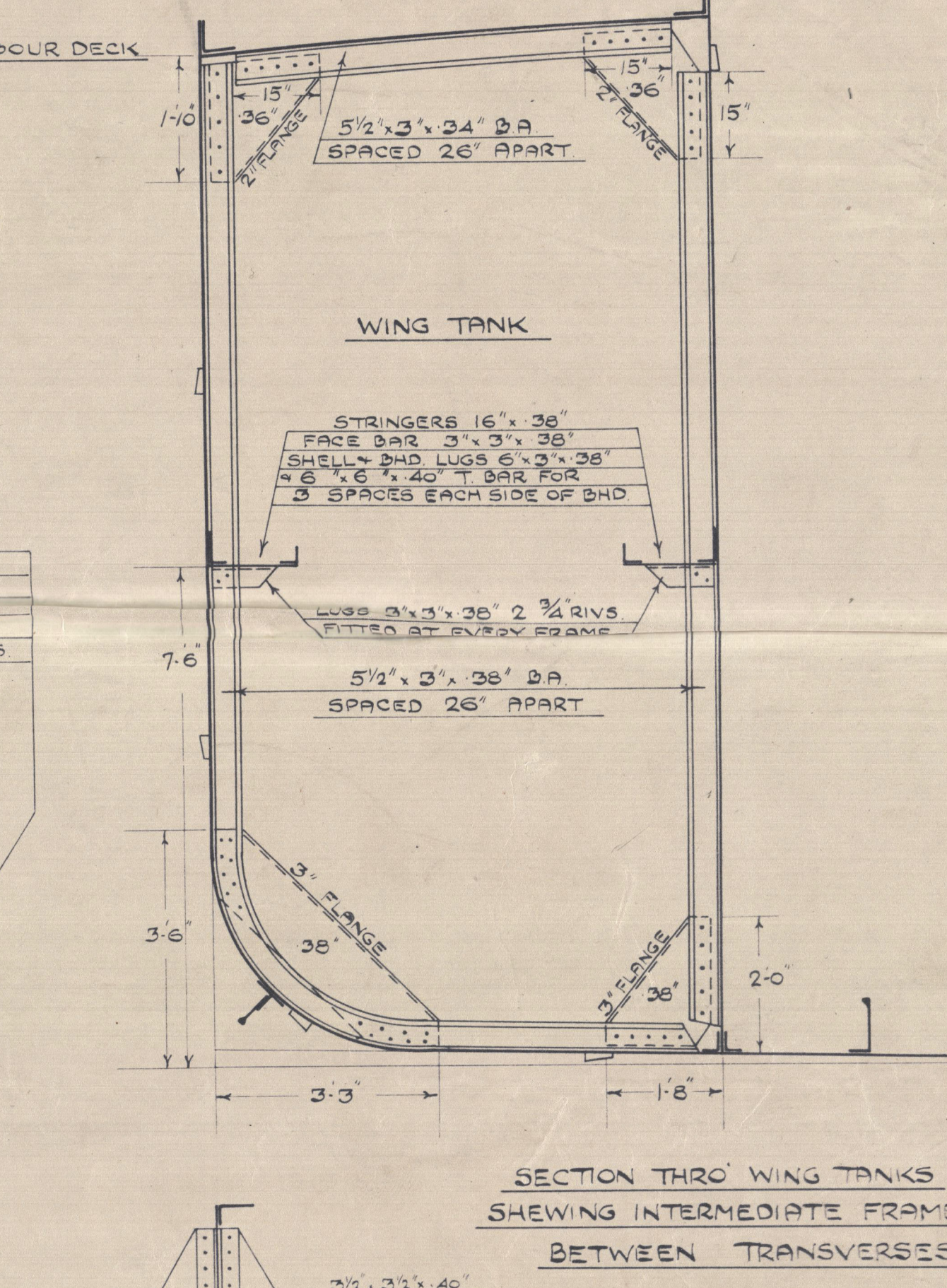
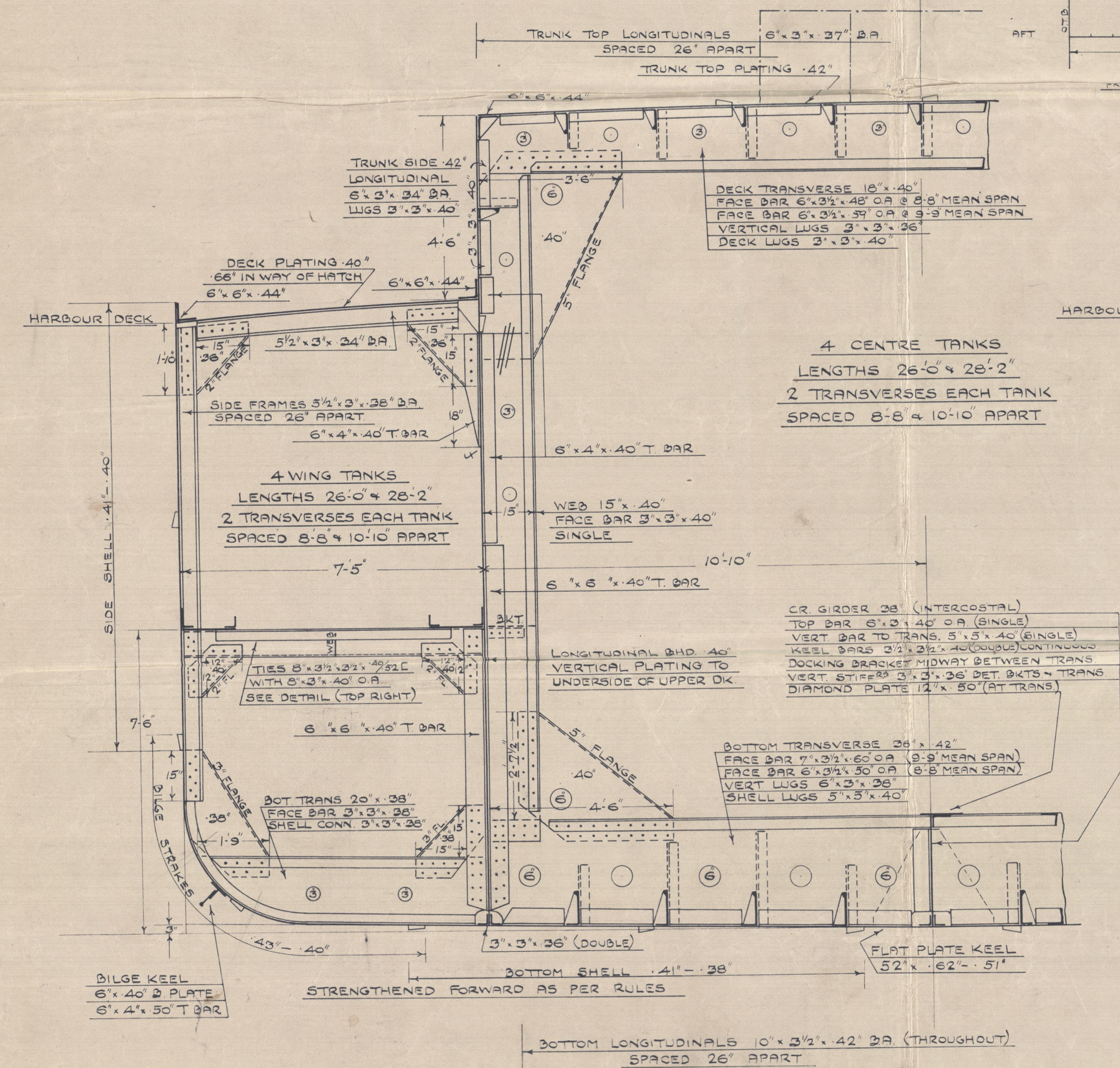
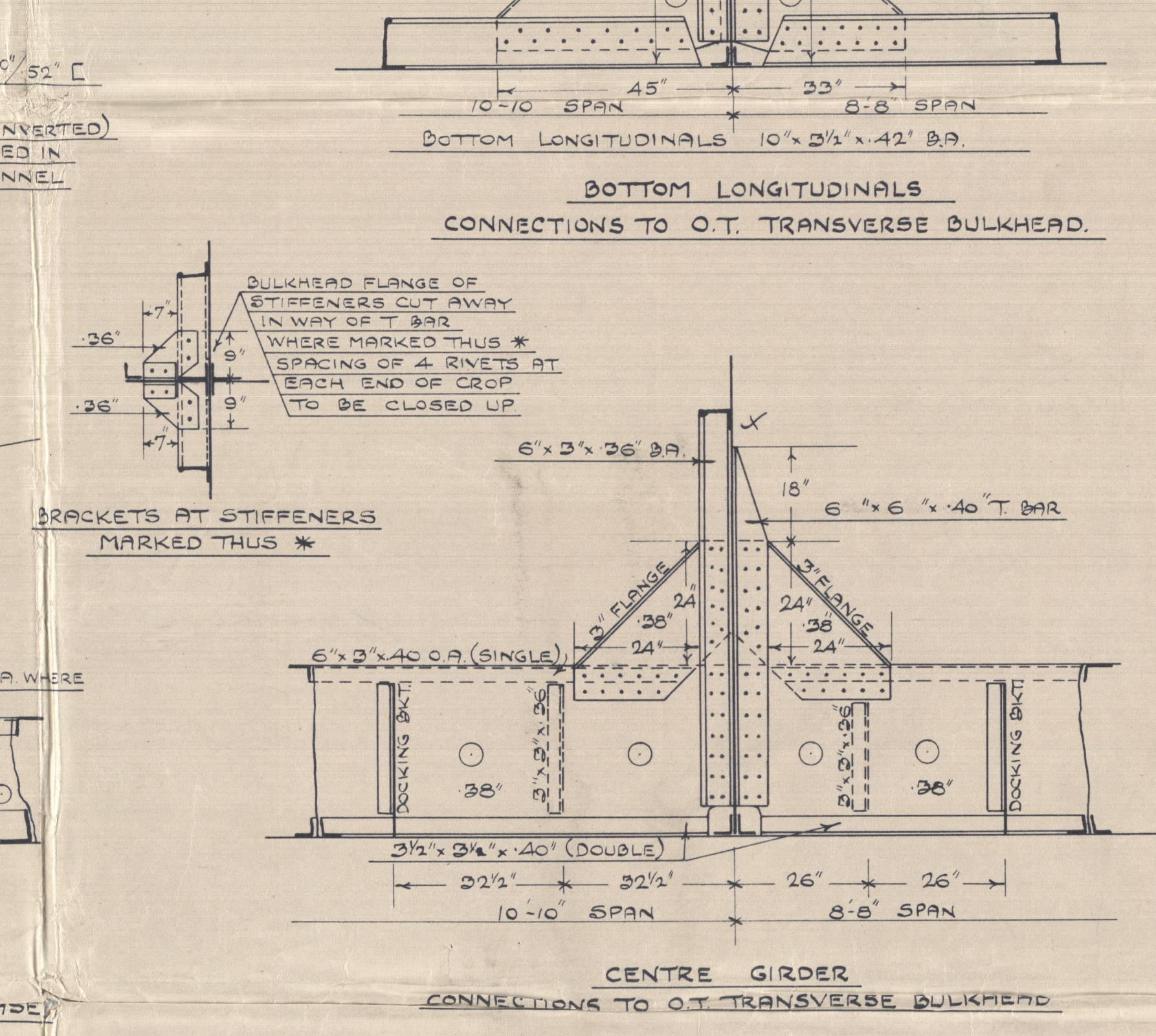
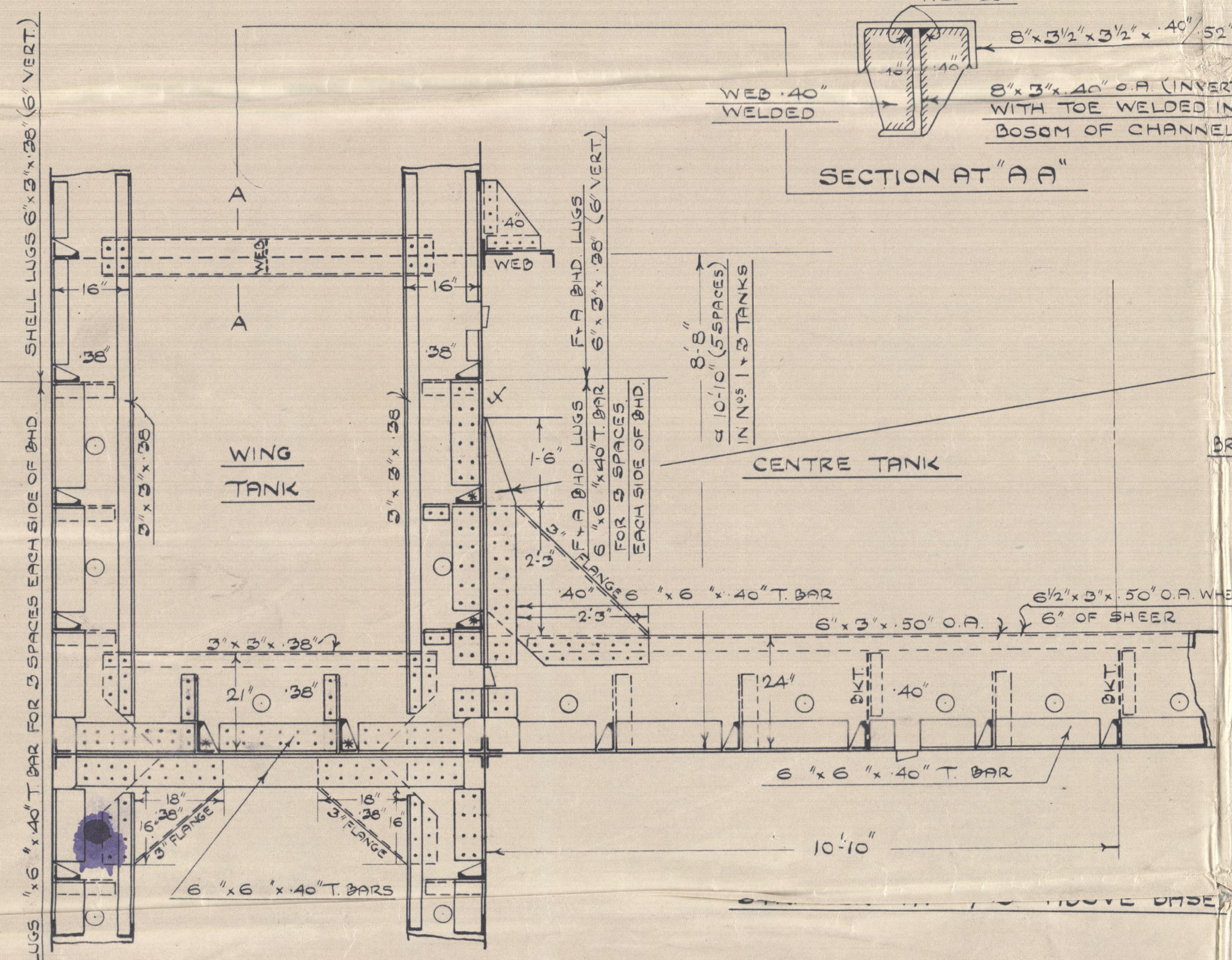
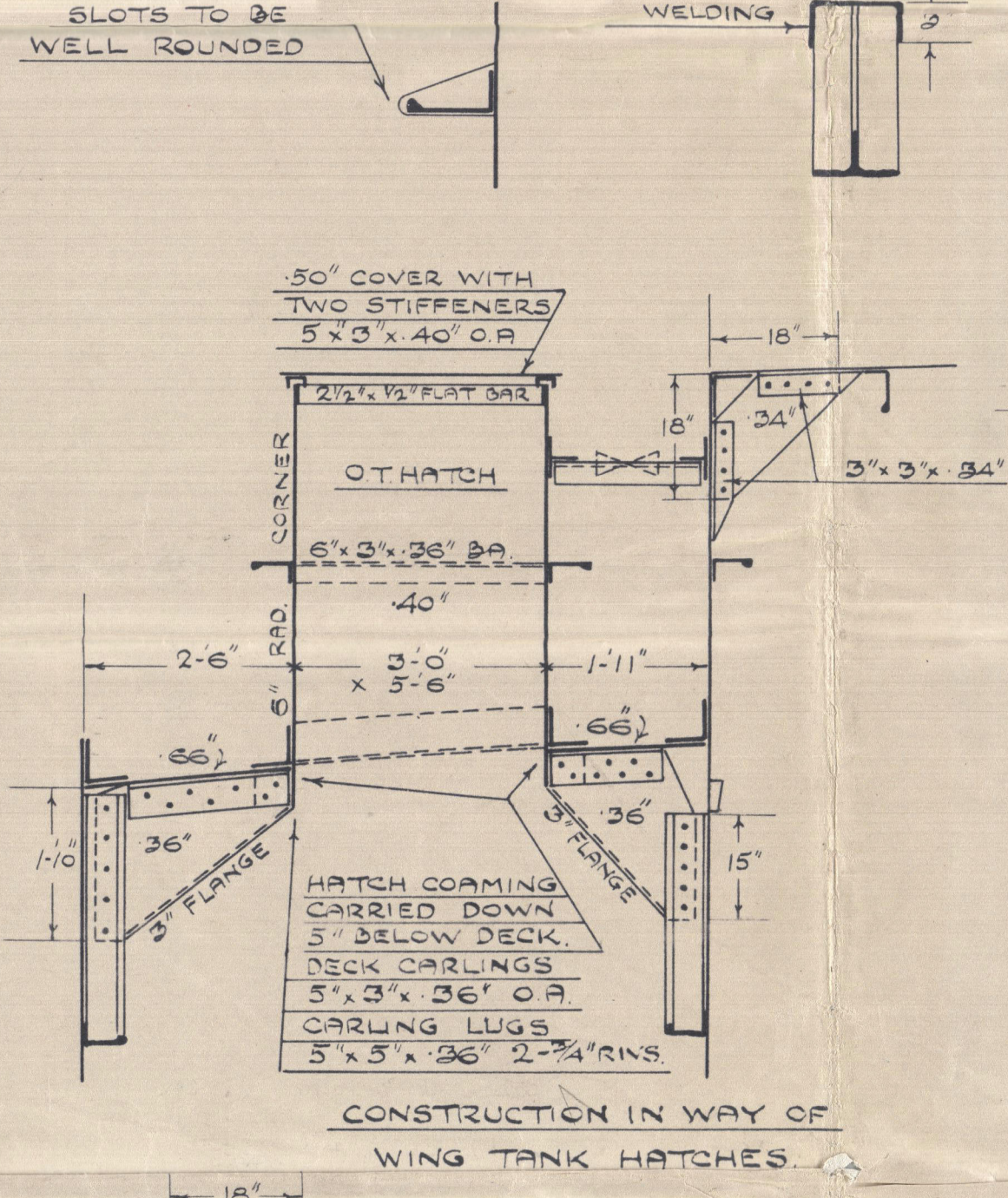
L = 231.0	B = 36.5	D = 15.0	(HARBOUR DK.)
D			= 15.0
L x D	= 231.0 x 15.0		= 2465.0
L x (B + D)	= 231.0 x (36.5 + 15.0)		= 11896.5
L/D	= 231.0/15.0		= 11.55



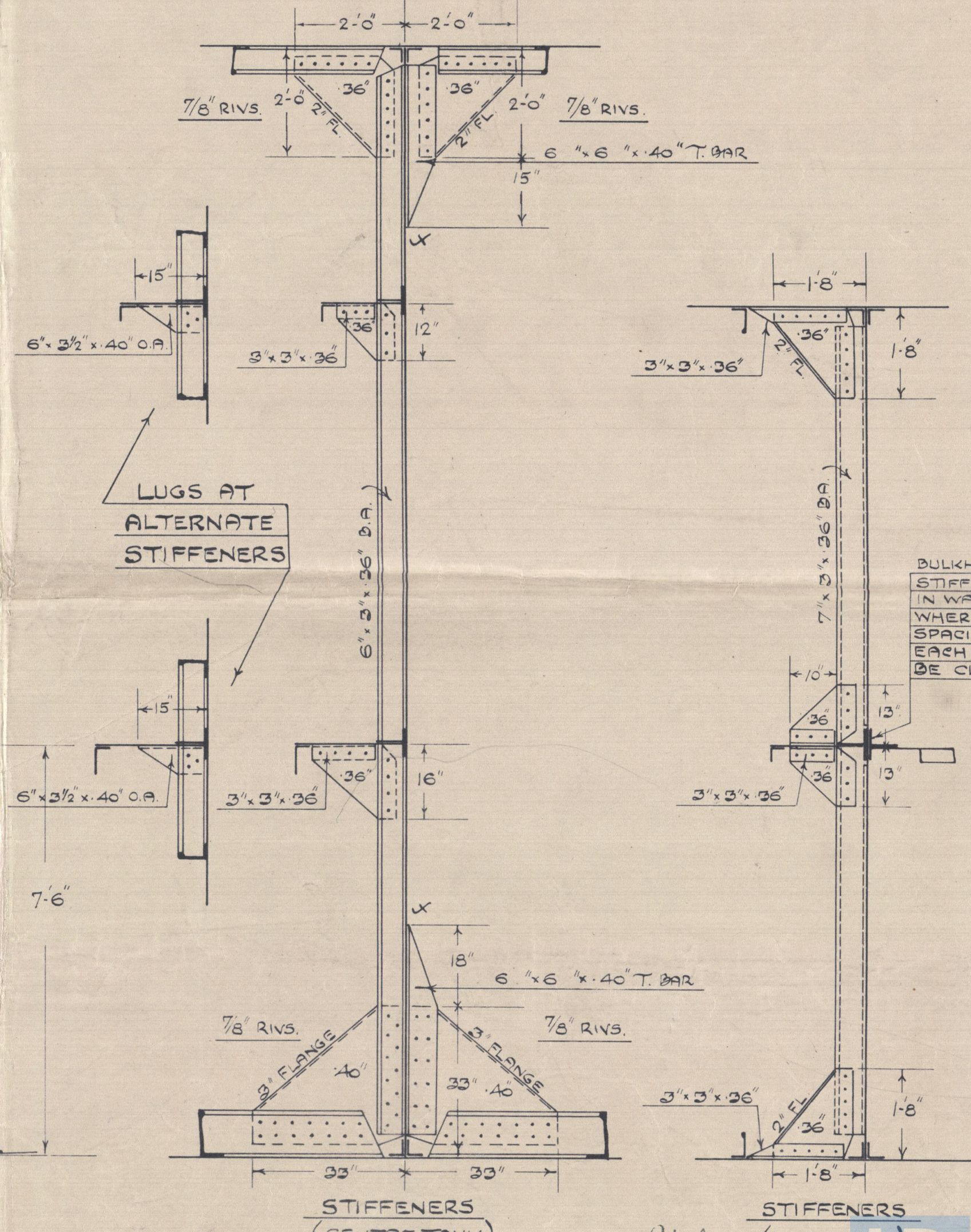
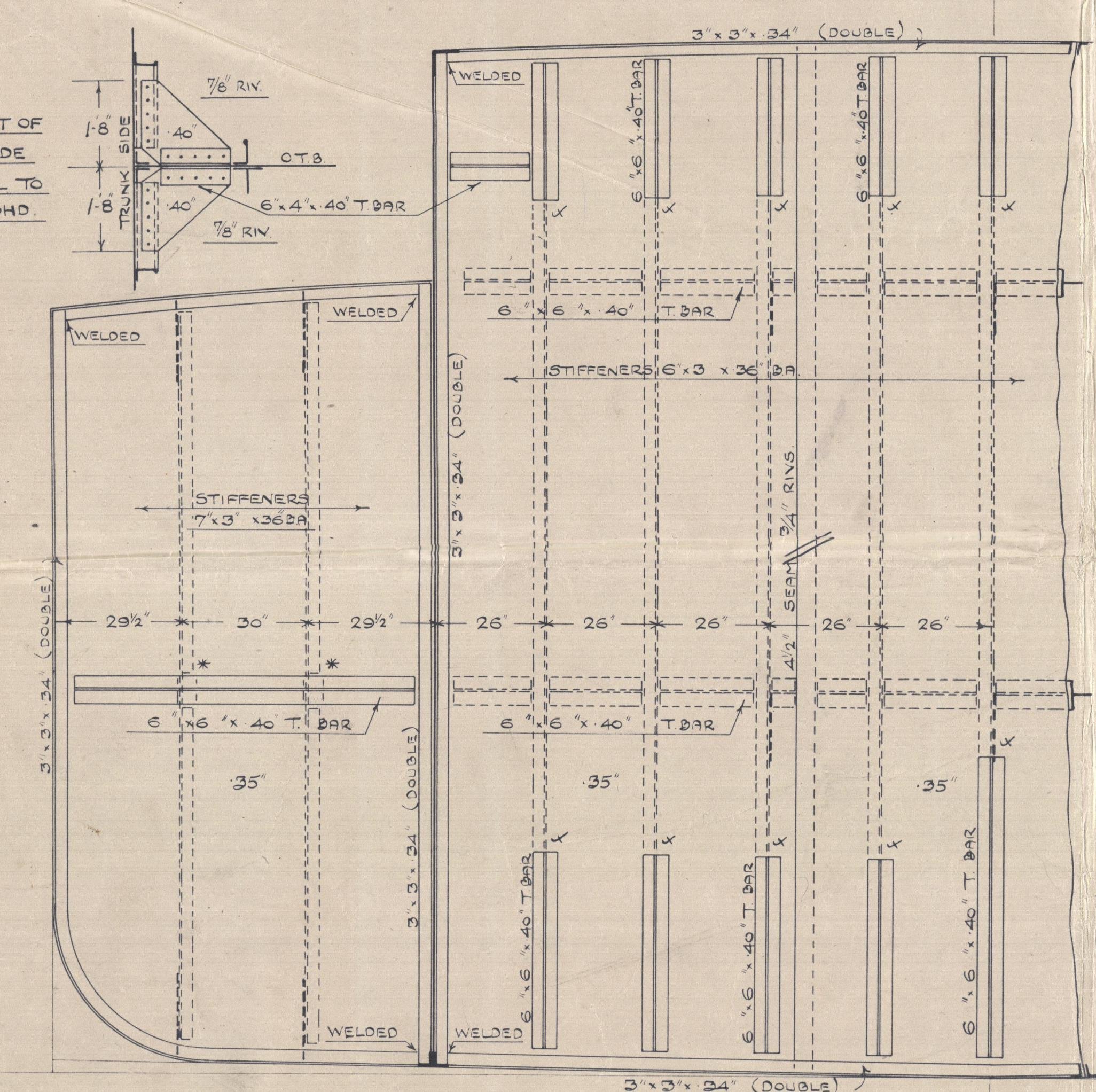
ALL ATTACHMENT ANGLES TO BULKHEADS TO BE HYDRAULICALLY RIVETED ON THE GROUND PRIOR TO ERECTION. NO PLATE SEAMS OR BUTTS TO BE ARRANGED IN WAY OF THE CONNECTIONS OF THE TRANSVERSES AND STRINGERS TO BULKHEADS.

IN CONNECTIONS MARKED THUS X RIVET HOLES IN BOTH BARS & BULKHEAD TO BE PUNCHED 1/16" SMALL & CAREFULLY REAMERED OUT AFTER ASSEMBLY. CONNECTIONS TO BE THEN DISMANTLED AND SURFACES CLEANED AND ALL BURS REMOVED. ON RE-ASSEMBLY BOLT FITTED IN EVERY 3RD HOLE ALSO IN BOTH HOLES AT BOTH ENDS OF BARS AND ALL THOROUGHLY HARDENED UP. END OF BARS ON FACE SIDE OF BULKHEADS TO BE WELDED PRIOR TO RIVETING (SEE SKETCH).

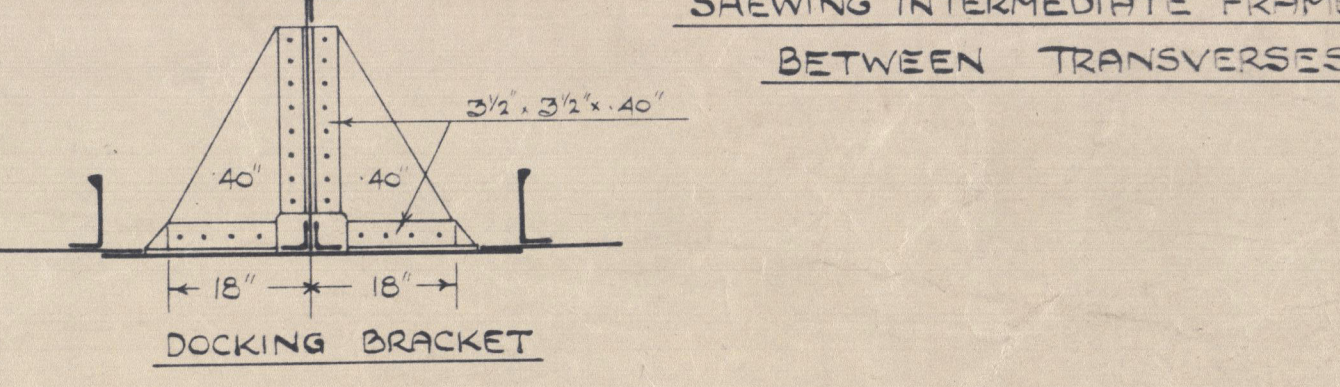
ALL BOUNDARY BAR BUTTS TO BE WELDED.



ATTACHMENT OF
TRUNK SIDE
LONGITUDINAL TO
TRANS. O.T. BHD.



SECTION AT TRANSVERSES.



TYPICAL O.T. TRANSVERSE BULKHEAD

JKL
24/13/39

Approved plan (alterations)

M.S. Para' L.H.Kg. v.m. No. 85-13.

Midship Section & O.T. Transverse
Bulkhead etc.



© 2020

Lloyd's Register
Foundation

003385-003390 0035