

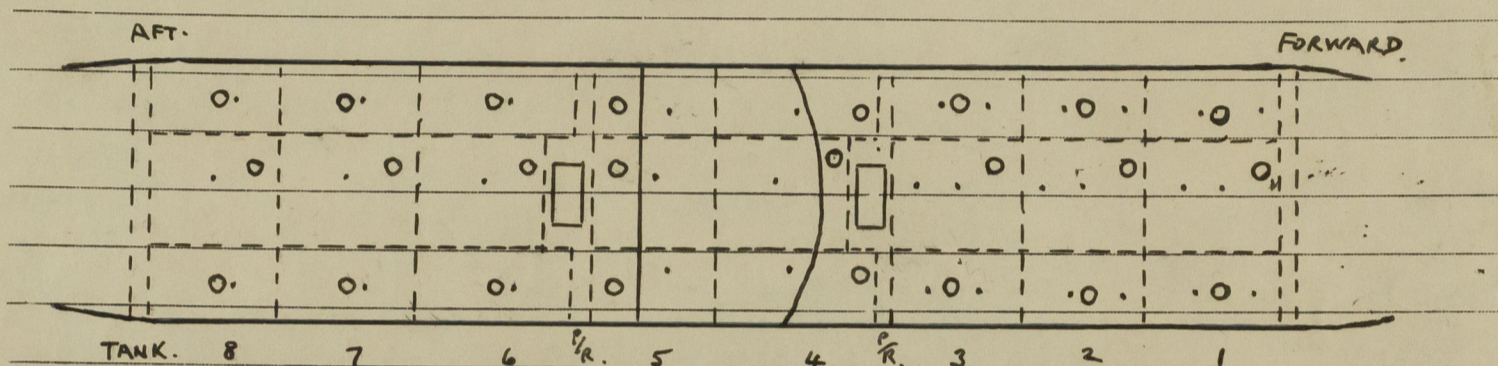
12 JUN 1956

## LLOYD'S REGISTER OF SHIPPING

UNITED WITH THE BRITISH CORPORATION REGISTER

CARDIFF

## ALTERATIONS TO CONDITIONS OF ASSIGNMENT OF LOADLINES

Ship's Name M.V. "LAMPANIA"Official No. 181630Port of Registry LONDONThis ship has been under survey at Newport, Monon 15th May 1956 and the following alterations to the conditions of assignment of loadlines have now been effected/found:—

Butterworth openings 12" diam. are cut in upper deck in way of cargo tanks Nos 1-8.

Openings closed by plates  $\frac{1}{2}$ " thick attached by studs.

Position of cargo tank hatches are shown O in sketch above.

" " Butterworth openings are shown . in sketch above.

James. W. X. Key.

CARDIFF

Rope scuttle to forecastle store fitted on forecastle deck starboard, 16 ins. diameter with coaming 9 ins. high x .55 ins. thick, closed by steel W.T. cover .44 ins. thick, and strongback.

James. W. X. Key.

Cardiff 1st. June 1956.

In order

JWB

25-6-56.

A copy of this Report has been placed on board.



© 2020

Lloyd's Register  
Foundation