

19.9.19.

VICKERS N° 573-4-5

BEARDMORES N° 616-17.

TWIN SCREW STEAMERS FOR THE COMMONWEALTH GOVERNMENT.

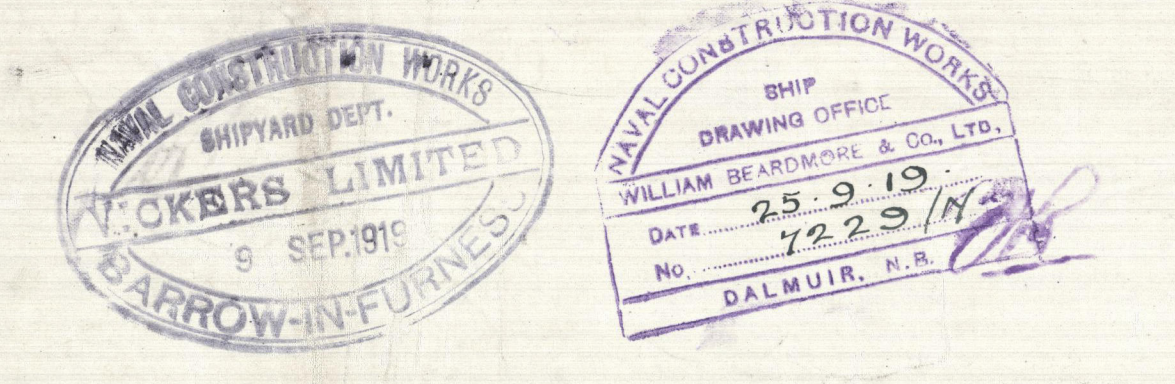
DIMENSIONS 530-0 BP x 68-0 MLD x 43-0 MLD TO B" SHELTER DK.

DECK PLANS

SCALE 1/8" = 1 FOOT.

CLASS 100A.1 LLOYD'S SHELTER DK SPECIAL SURVEY

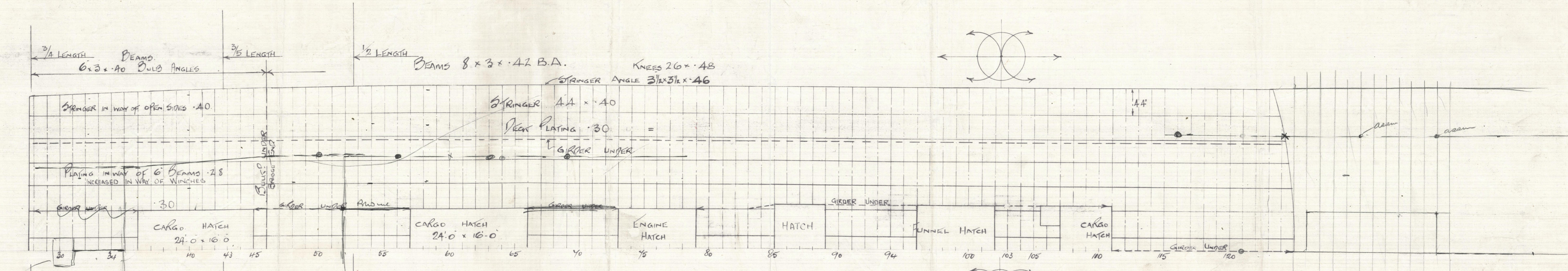
SHEET No. 1.



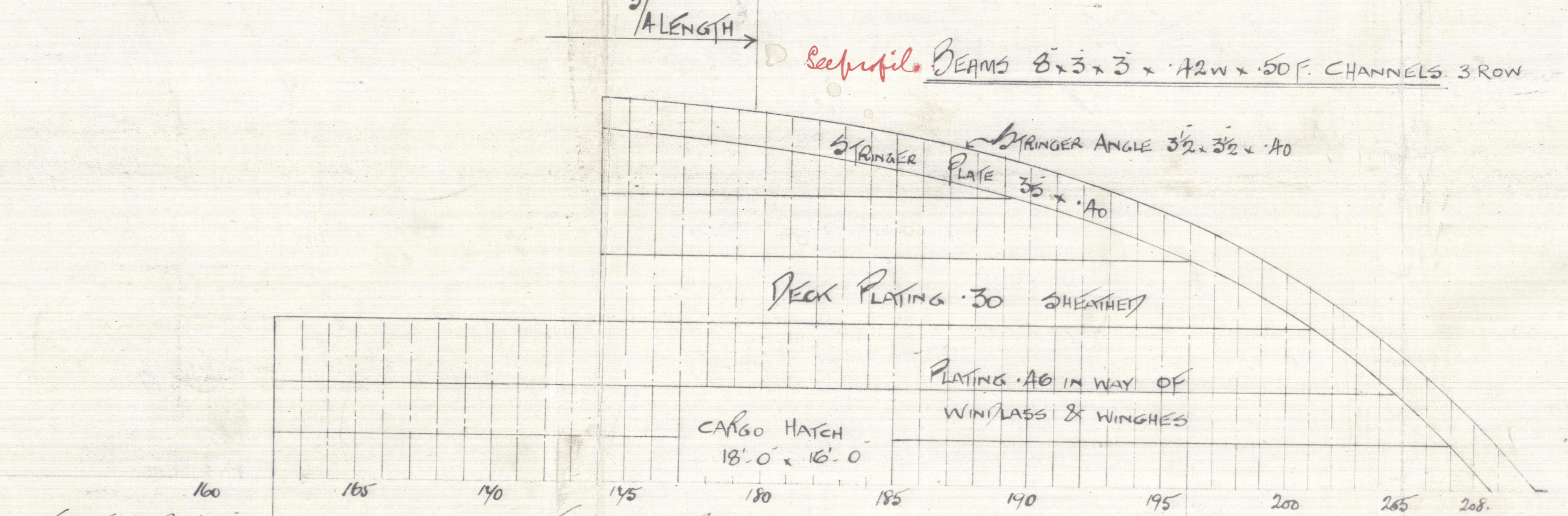
NOTE -

IN VIEW OF MULTIPLE PUNCHING IT IS PROPOSED TO FIT SINGLE KNEED COAMING ANGLES TO ALL WEATHER DECK HATCHES, IN LIEU OF DOUBLE RIVETED ANGLES AS USUALLY FITTED

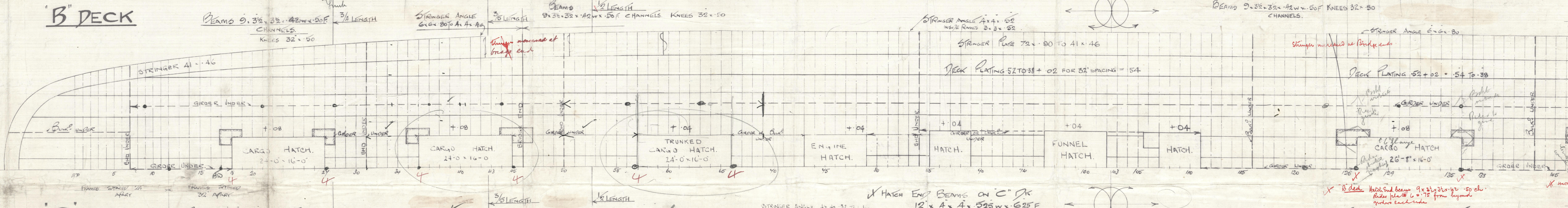
A DECK



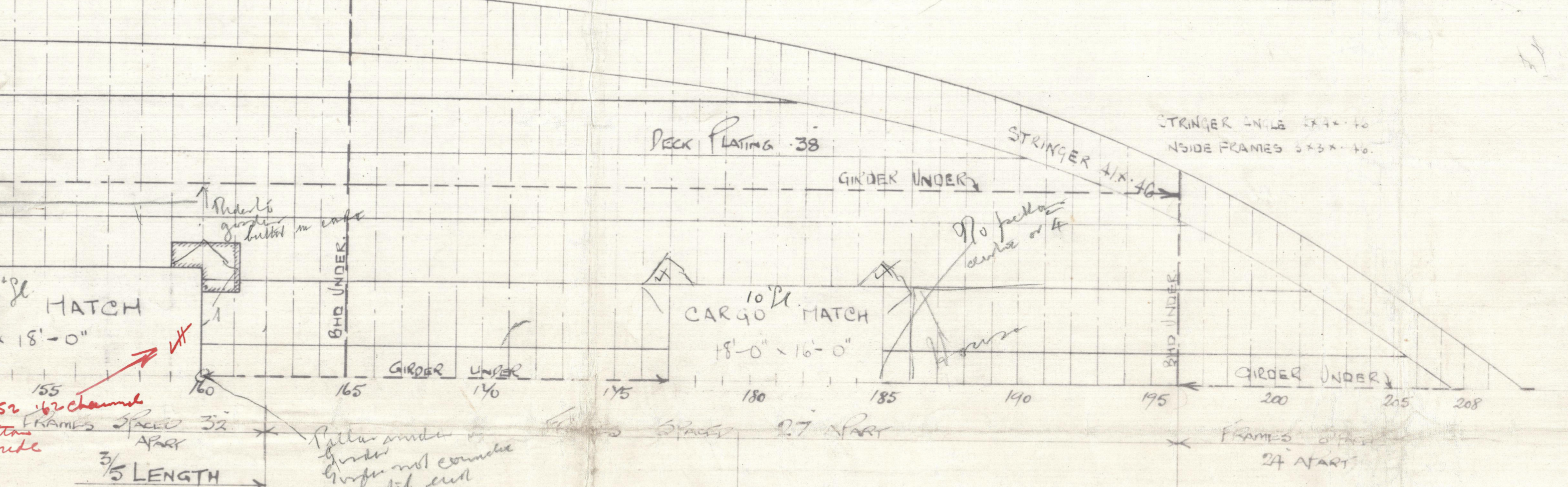
A DECK



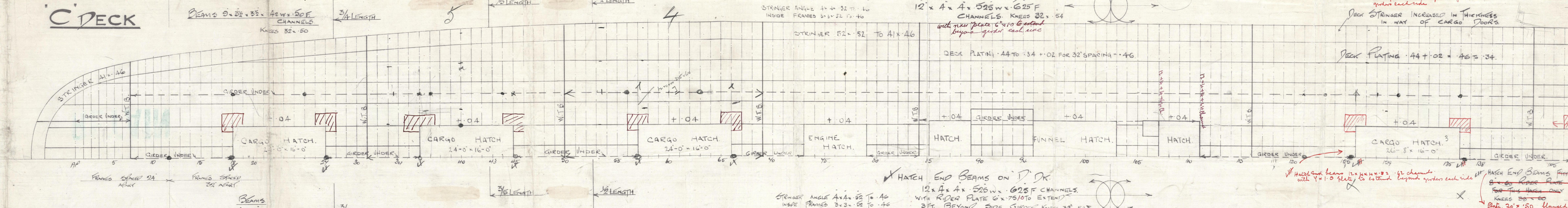
B DECK



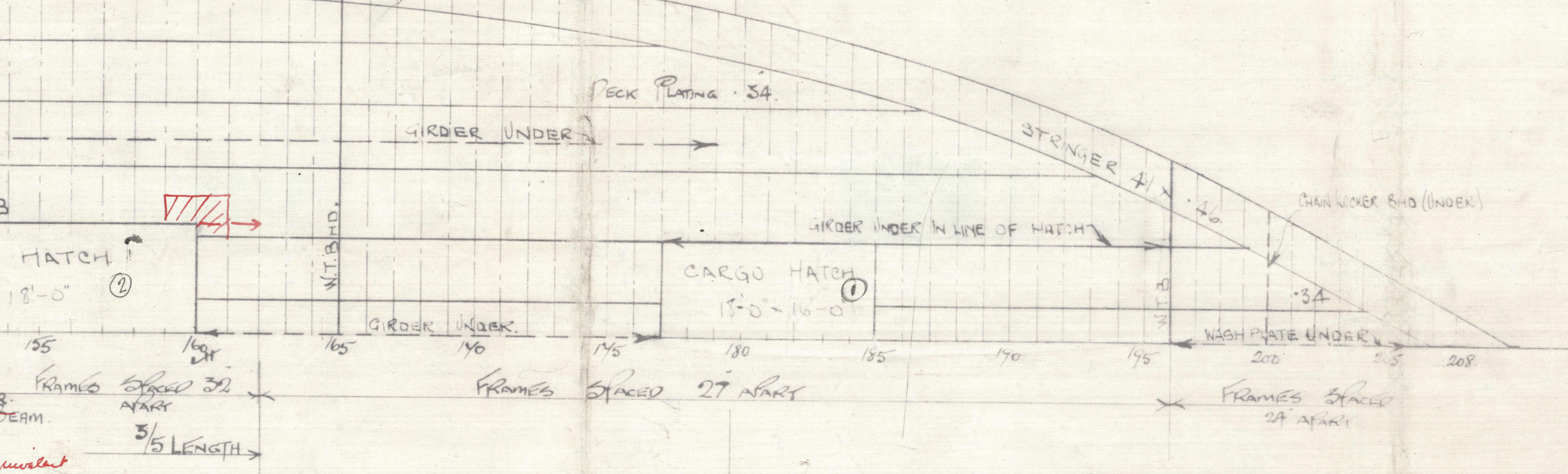
B DECK



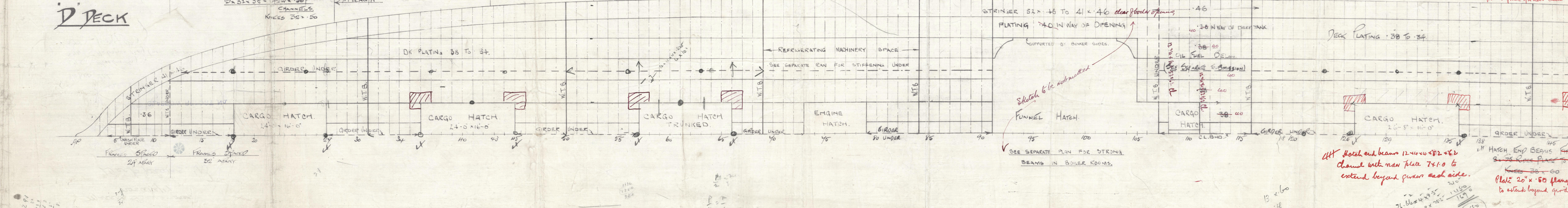
C DECK



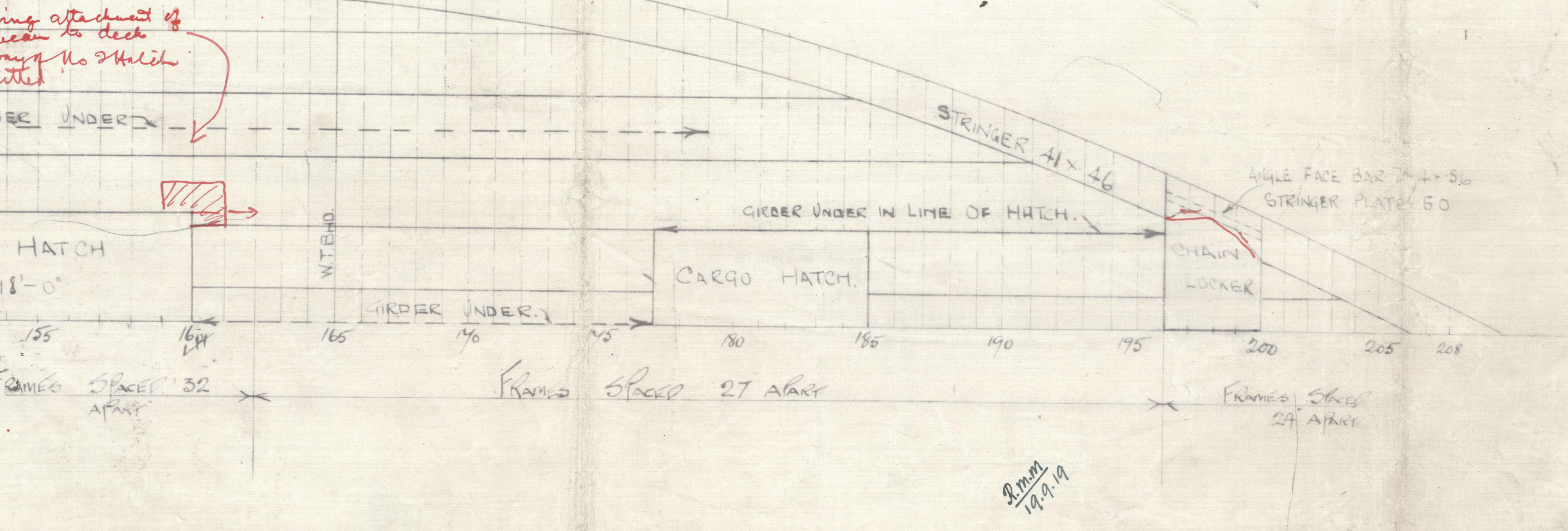
C DECK



D DECK



D DECK




13
14
9-9-19

3
Vickers Ltd
Nos 573, 4, & 5

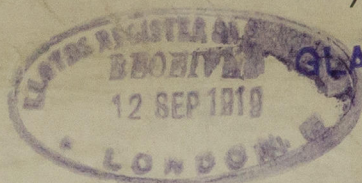
Messrs Beardmores
nos 616/17

Deck plans. (A)

T.S.S. "Lays Bay" 

GLASGOW REPORT No. 41619

T.S.S. "Esperance Bay"



GLASGOW REPORT No. 42050

Vickers, Ltd.

- 573 - Moxton Bay
- 574 - Holsons Bay (now "Esperance Bay")
- 575 - Jervis Bay

RETAIN



© 2020

Lloyd's Register
Foundation

003385-003390-0227