

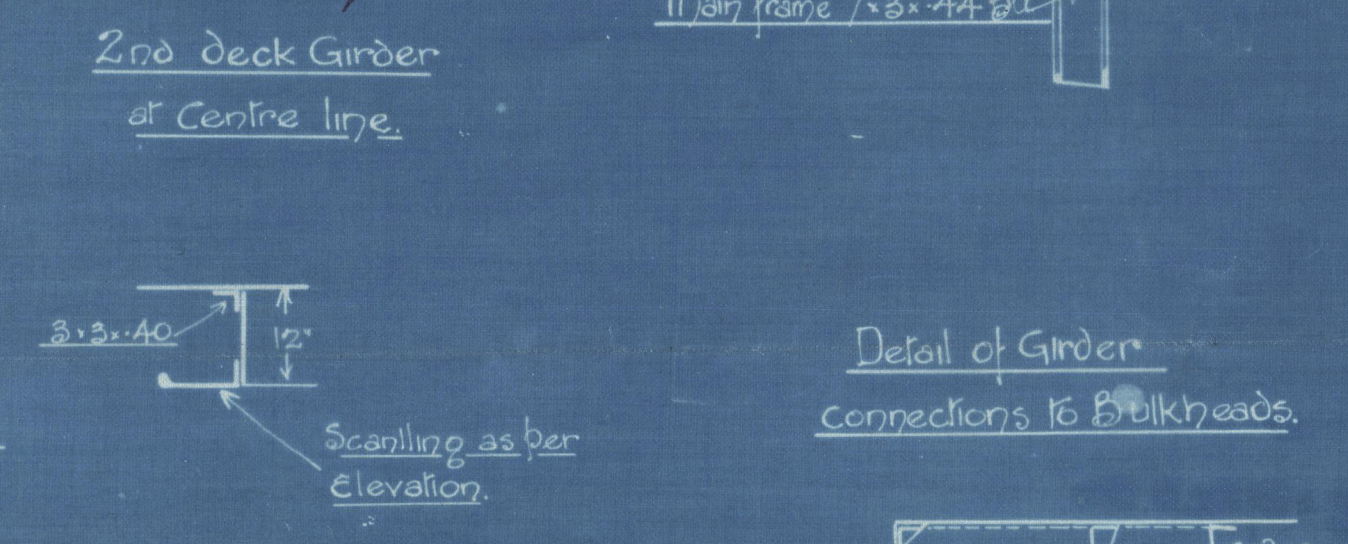
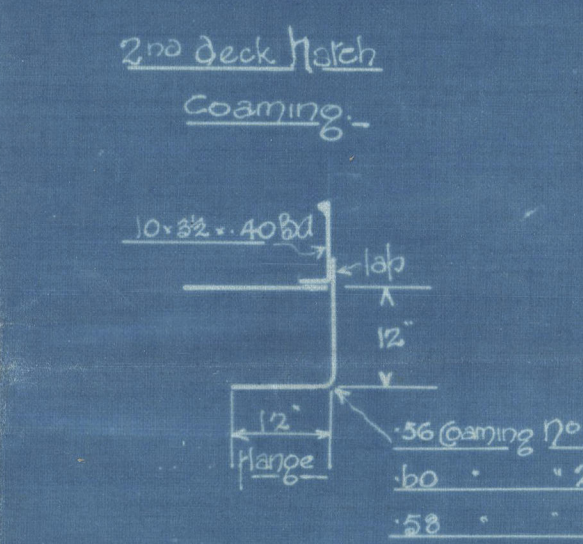
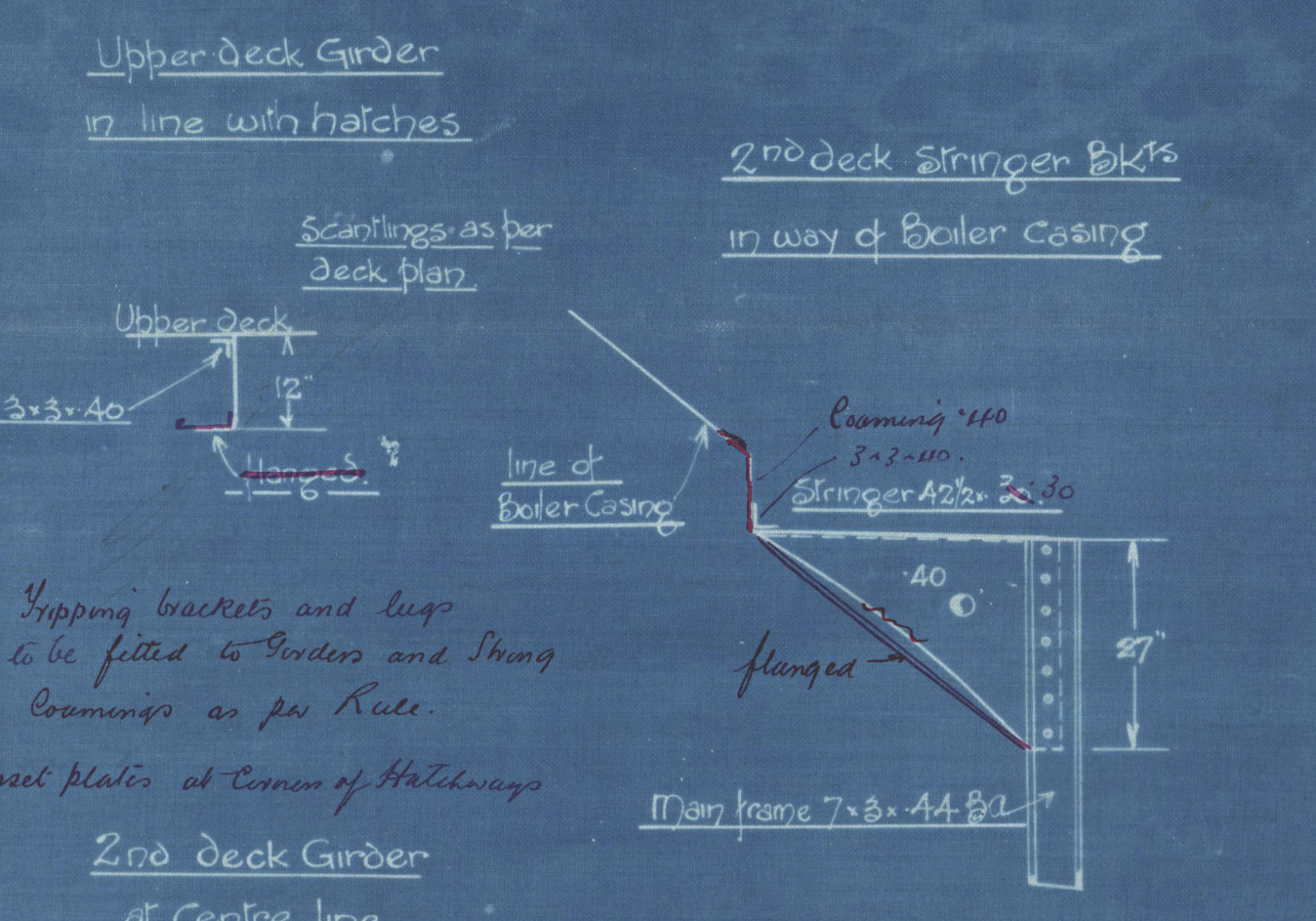
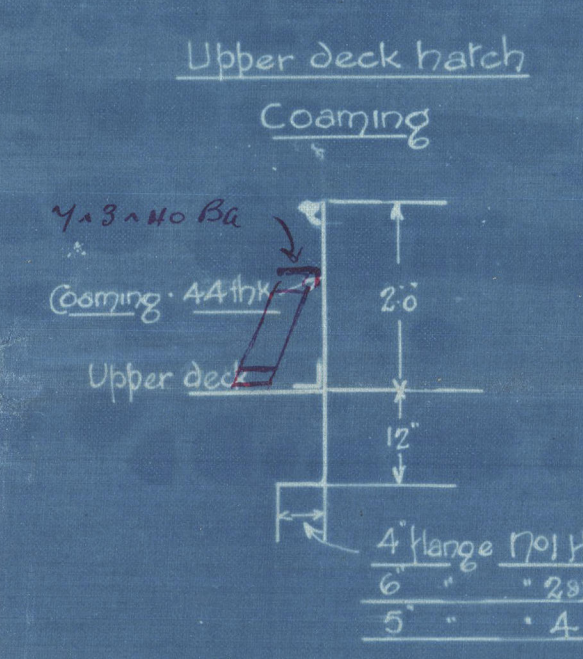
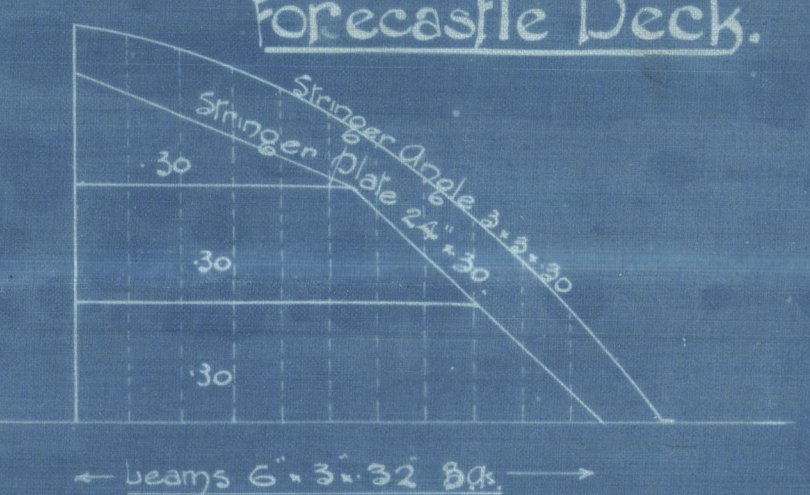
5/2/35.

# Profile & Deck Plans. No 388.

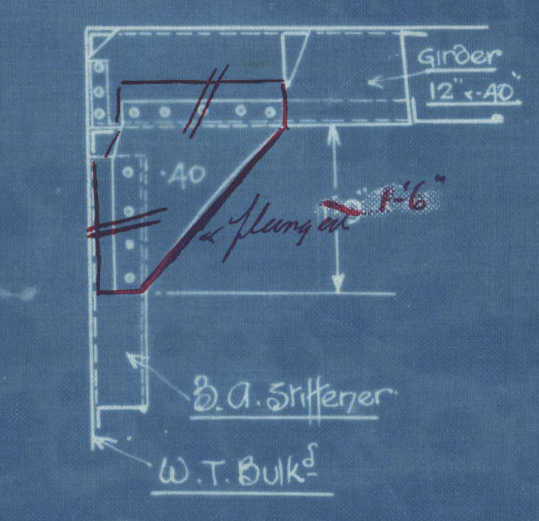
Dimensions Length BP 240'0". Breadth Mid 37'3 1/4". Depth Mid 16'0" + 8'0" Tween Decks.  
Class 100 A1, with a free board corresponding to a maximum draft of 16'8" moulded. (Summer)  
Scale 1/2" = 1'-0".

Note Hatch side coamings, Deck girders, and Hatch end beams, not to exceed a depth of 12".

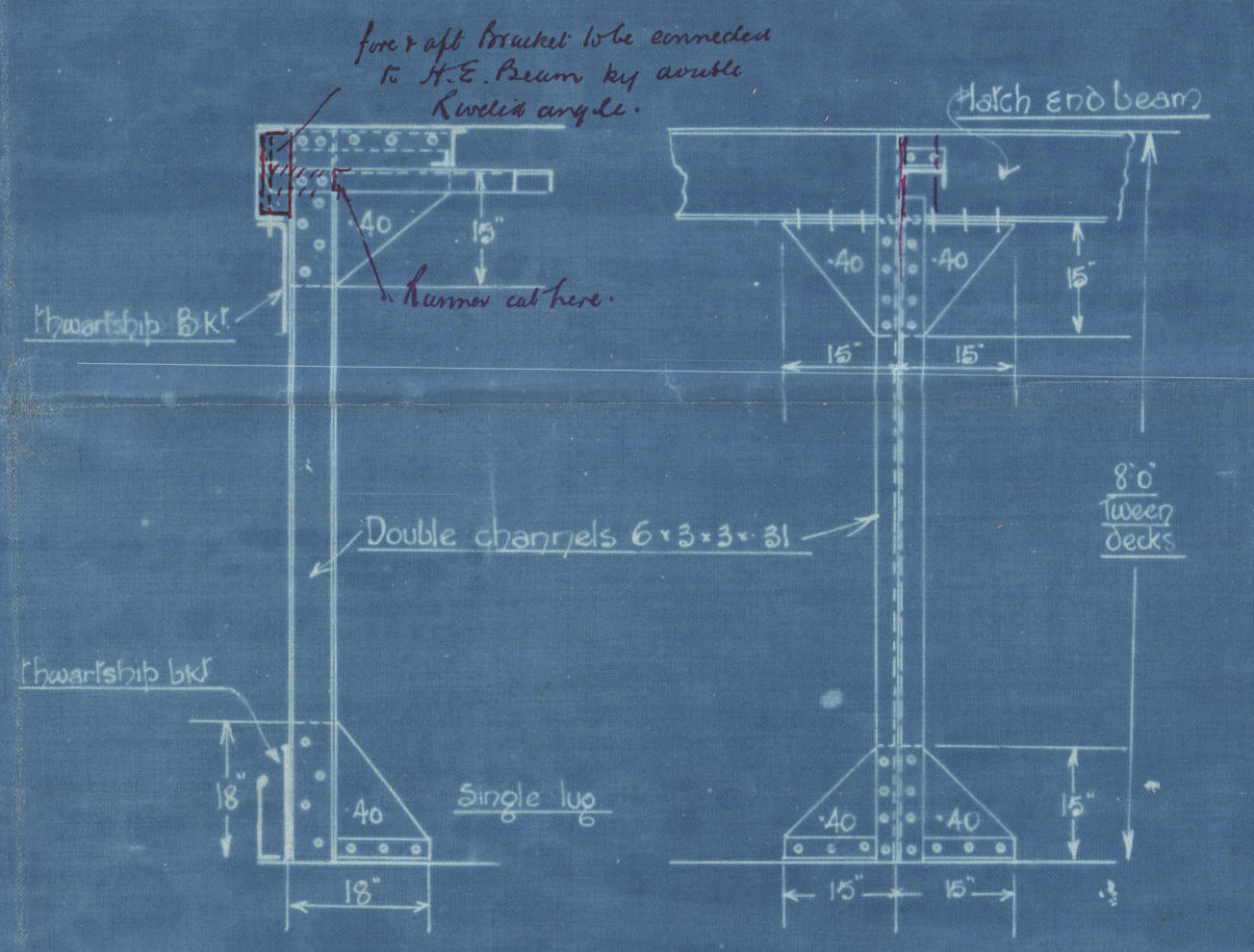
## Forecastle Deck.



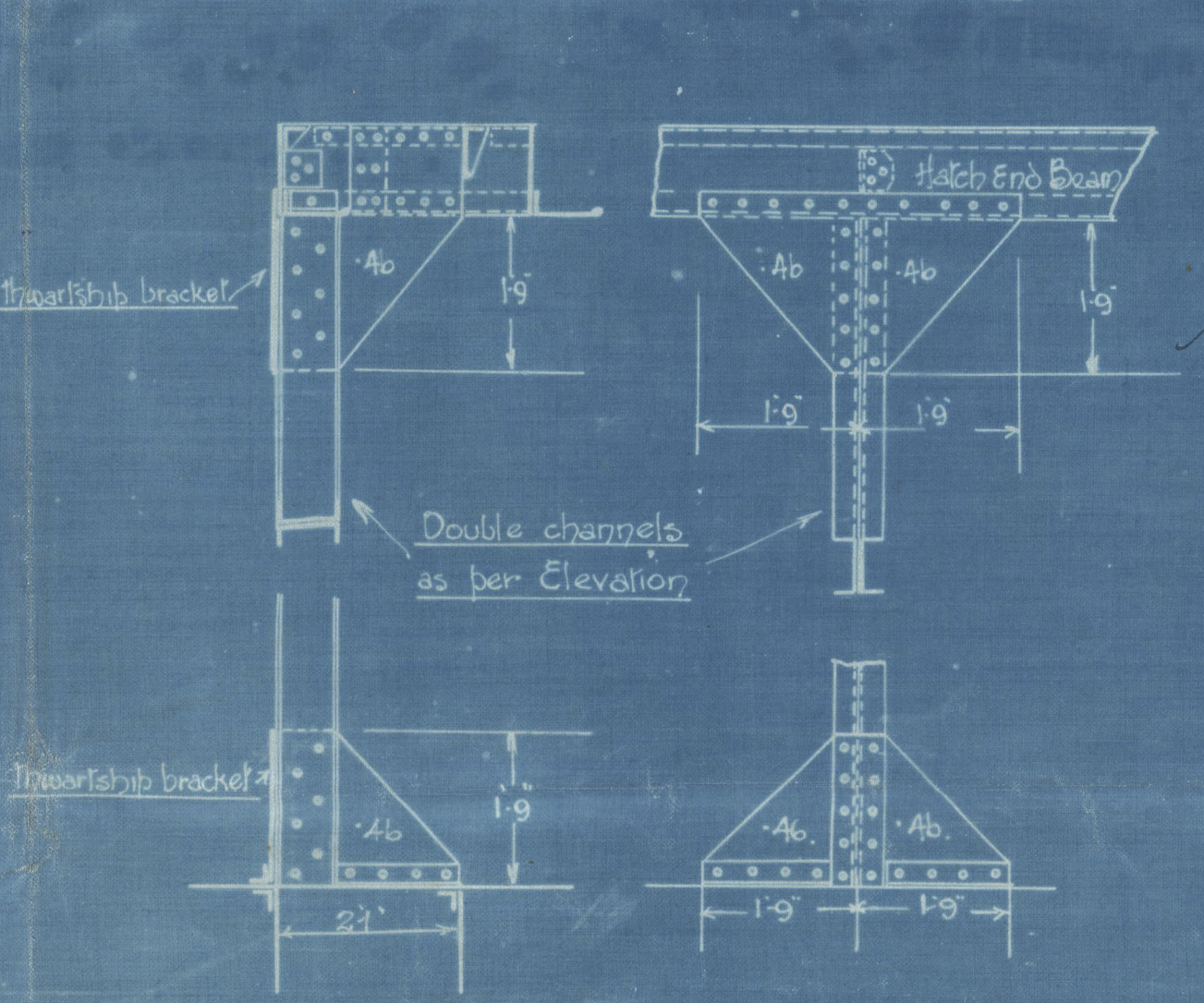
Detail of Girder connections to Bulkheads.



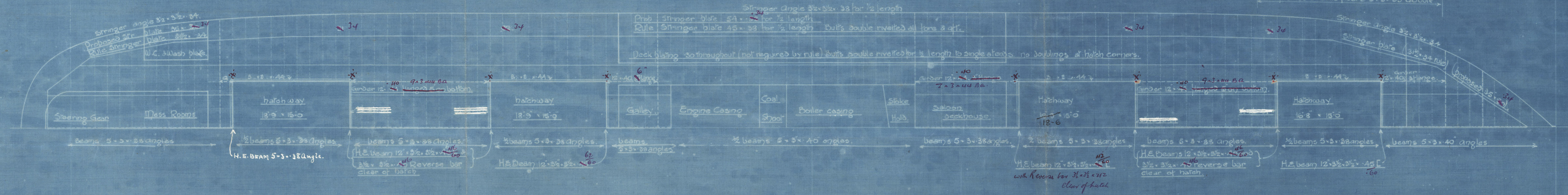
## Tween Deck Hatch End Pillar Connections.



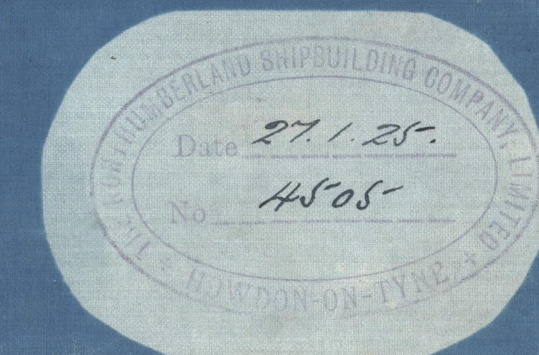
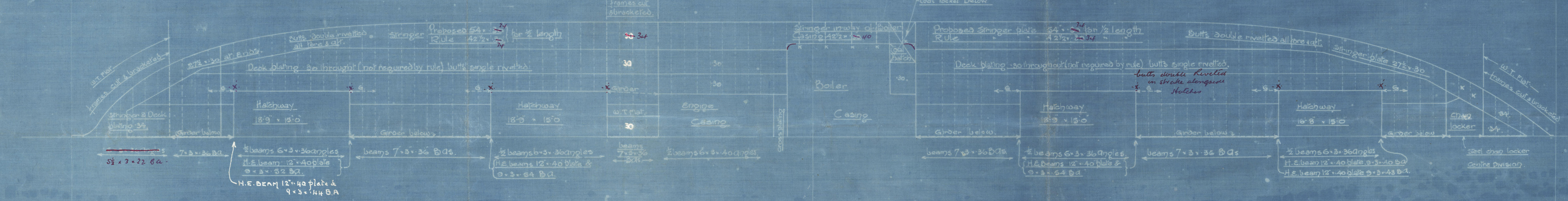
## Hold Hatch End Pillar Connections.



## Upper Deck.



## 2nd Deck.





(2)  
Profiles & deck plans  
No. 388  
Northumberland S.B.C. Ltd.

---

S.S. "WAIPAH" "

NEWCASTLE ON TYNE.

Report No. 79452.

---



© 2020

Lloyd's Register  
Foundation

003401-003408-0122