

# “EMPIRE BAXTER.” Y TYPE STEAM CARGO VESSEL. MIDSHIP SECTION. (AS FITTED) SCALE 1/2 INCH = ONE FOOT

CLASS 100 A.I. WITH FREEBOARD LLOYD'S SPECIAL SURVEY.

425'-0" B.P. ON L.W.L. OF 24'-7 1/2" x 56'-0" MLD. 56'-3" EXT. x 27'-9" MLD. TO 2ND DECK. 36'-10" MLD. TO UPPER DECK.

THE SCANTLING IS SUITABLE FOR A DRAUGHT 18" IN EXCESS OF THAT CORRESPONDING TO THE FREEBOARD.

WHICH COULD BE ASSIGNED TO A COMPLETE SUPERSTRUCTURE VESSEL WITH A TONNAGE OPENING FITTED.

THE SCANTLING OF ANGLE, BULB ANGLE AND CHANNEL SECTIONS GIVEN ON THIS PLAN ARE

N.B.S. AND ARE IN ACCORDANCE WITH THE EMERGENCY PROGRAMME LIST.

LLOYD'S NUMERALS.		
FIRST LONGITUDINAL NUMBER L x D = 425'-0" x 35'-7 1/2"	=	15193.75
SECOND LONGITUDINAL NUMBER L x (B+D) = 425'-0" x (56'-0" + 35'-7 1/2")	=	38993.75
1/2 TO UPPER DECK = 425'-0" x 36'-8 3/8"	=	11.54
D MOULDED DEPTH = 27'-8" x 8'-0"	=	35.75
D = 36'-7 1/2" (3'-0" + 3'-7 1/2") - 3" FOR HIGHER BKT.	=	23.9
D AT HALF LENGTH FORWARD	=	26.39

EQUIPMENT NUMBER		
SECOND LONGITUDINAL NUMBER = 425'-0" x (56'-0" + 36'-7 1/2")	=	39418.75
FORECASTLE = 40'-0" x 7'-5 1/4"	=	228.00
MIDSHIP ACCOMMODATION & CASING = 72'-25" x 8'-0" x 1/2"	=	289.00
SALOON ACCOMMODATION = 80'-9" x 7'-5 1/4"	=	115.00
EQUIPMENT NUMBER	=	40047.75

**EQUIPMENT.**

2 BOWER ANCHORS 68 CWT. EACH STOCKLESS.

DISPENSED WITH AS A WAR MEASURE 1 BOWER ANCHOR 58 1/2 CWT.

SHIPYARD DEPT.

VICKERS-ARMISTRONGS LTD.

20 NOV 1941

BARROW-IN-FURNESS

EQUIPMENT IN ACCORDANCE WITH WAR REQUIREMENT.

**RIVETING NOTE.**

RIVETS IN FRAMES TO FLOORS AND CROSS TIE PLATES IN AFT PEAK SPACED 5 DIAS. APART CR. TO CR.

7/8 DIA. RIVETS IN FRAMES TO SHELL AT FLAT OF DOUBLE BOTTOM, FORWARD HALF LENGTH FORWARD SPACED 5 1/2 DIAS. (TWO ROWS).

3/4 DIA. RIVETS IN FRAMES TO FLOORS AT FLAT OF DOUBLE BOTTOM FORWARD HALF LENGTH FORWARD SPACED 6 1/2 DIAS. (TWO ROWS).

RIVETS IN SIDE FRAMES TO SHELL SPACED 6 1/2 DIAS. APART. 5 1/2 DIAS. APART IN WAY OF FORE & AFT PEAK TANKS AND DEEP FRAMING FORWARD.

RIVETS IN BOTTOM FRAMES TO SHELL AFT HALF LENGTH FORWARD 7 DIAS. APART CR. TO CR.

RIVETS IN SEAMS OF BULKHEAD AND TUNNEL PLATING MARGIN ANGLES AND WEATHER STRINGER ANGLES AND BULKHEAD TO BULKHEAD SPACED 4 1/2 DIAS. APART CR. TO CR.

RIVETS IN FLAT KEEL ANGLES, VERTICAL ANGLES CONNECTING FLOORS TO CENTRE GIRDER AND SHELL FLANGE OF WATERTIGHT BULKHEAD FRAME SPACED 5 DIAS. APART CR. TO CR.

RIVETS IN FRAMES TO FLOORS AFT HALF LENGTH FORWARD REVERSE FRAMES TO FLOORS AND INNER BOTTOM PLATING.

VERTICAL ANGLES TO FLOORS AND SIDE GIRDERS IN BULKHEAD STIFFENERS (EXCEPT PEAK BULKHEADS) AND IN DECK PLATING TO BEAMS ON EVERY FRAME SPACED 7 DIAS. APART CR. TO CR.

RIVETS IN CENTRE GIRDER TOP ANGLES BOTH FLANGES SPACED 7 DIAS. APART CR. TO CR. NON-WATERTIGHT.

5 DIAS. IN WAY OF CENTRE LINE BULKHEAD.

RIVETS IN CENTRE GIRDER TOP ANGLES BOTH FLANGES SPACED 5 DIAS. APART CR. TO CR. WATERTIGHT.

**SCHEME OF WELDING.**

BUTTS OF SHELL PLATING.

BUTTS OF DECK PLATING.

BUTTS OF TANK TOP PLATING.

BUTTS OF CENTRE GIRDER AND MARGIN PLATES.

BUTTS OF W.T. BULKHEADS.

BUTTS OF TUNNEL PLATING.

VENTILATOR COAMINGS TO DECK AND COAMINGS.

**STEM.** OF FLANGED PLATES TO SUIT PLANING SHOE SEE PROFILE.

**STERNPOST.** CAST STEEL WITH 5 GUDGEONS.

**RUDDER.** WELDED DOUBLE PLATES 5 1/2" AND 1" STOCK 1 1/2 DIA. CAST STEEL (RULE 11) TOP GUDGEON CAST STEEL. OTHER GUDGEONS MILD STEEL.

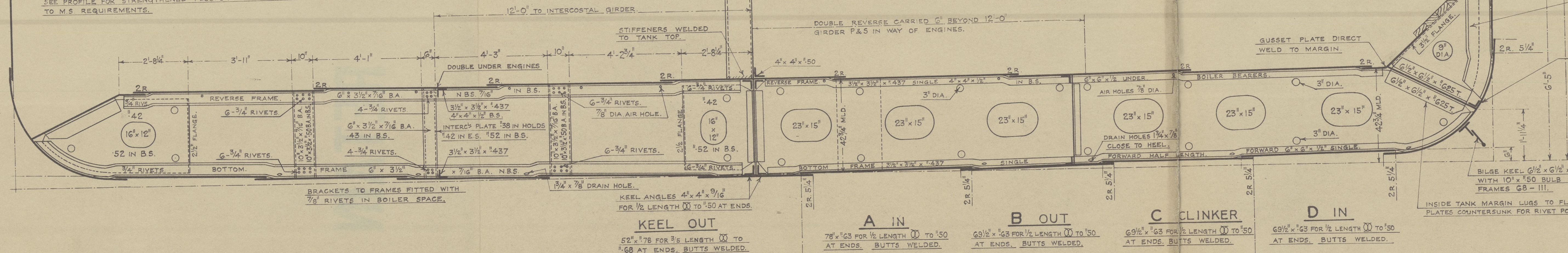
## DISPOSITION OF FLOORS.

SOLID FLOORS ON EVERY FRAME IN ENGINE SPACE AND FORWARD 3/8 LENGTH FORWARD UNDER BOILER BEARERS. PARTIAL SOLID UNDER THRUST.

ELSEWHERE SOLID FLOORS ON EVERY THIRD FRAME. BRACKET FLOORS INTERMEDIATE.

SEE PROFILE FOR STRENGTHENED FLOORS IN WAY OF WATERTIGHT BULKHEADS.

TO M.S. REQUIREMENTS.



## CENTRE GIRDER.

43 1/2" x 154 FOR 1/2 LENGTH TO 146 AT ENDS

16 IN BOILER SPACE. ALL BUTTS WELDED.

VERTICAL ANGLES 3 1/2" x 3 1/2" x 1437 SINGLE.

4 1/2" x 1 1/2" IN B.S. 6" x 6" x 1/2" SINGLE.

UNDER ENGINE SPACE AND THRUST.

SEATING 6" x 6" x 1/2" UNDER BOILER BEARERS.

SEE PROFILE WHERE WATERTIGHT.

CENTRE GIRDER TOP ANGLES 4 1/2" x 4 1/2" x 1/2" FOR AFT AND 4 1/2" x 156 B.S.

DOUBLE BOTTOM PLATING ARRANGED FOR CARRYING OIL FUEL.

INWAY OF HATCHES, TANK TOP PLATING INCREASED 3/8" IN LIEU OF CEILING.

INNER BOTTOM PLATING 144 FOR 1/2 LENGTH TO 140 AT ENDS 152 IN E.S.

158 IN B.S. BUTTS WELDED. SEAMS LAPPED AND CR.

INNER BOTTOM PLATING 1" THK UNDER ENGINES (2 PLATES).

TANK TOP CENTRE STRAKE 82" x 150 FOR 1/2 LENGTH TO 144 AT ENDS.

RULE 58" x 152 TO 144 INCREASED IN WAY OF HATCHES 152 IN E.S.

158 IN B.S. ALL BUTTS WELDED.

TANK TOP NOT COATED WITH ANY MATERIAL.

MARGIN PLATE 43 1/2" MOULDED x 54 - 160 IN B.S. (RULE 39) ALL BUTTS WELDED.

WING BRACKETS 144 - 154 IN B.S.

MARGIN CONNECTION 6 1/2" x 6 1/2" x 1625 TEE BAR 1625 IN B.S.

WITH 18-7/8 RIVETS EACH FLANGE AND 24" x 142 CONTINUOUS GUSSET PLATE - 152 IN B.S. WITH 6-7/8 RIVETS TO BRACKET.

IN WAY OF DECK PLATING (SEE PROFILE) 6 1/2" x 6 1/2" x 1625 TEE BAR WITH 18-7/8 RIVETS EACH FLANGE AND 24" x 142 CONTINUOUS GUSSET PLATE WITH 5-7/8 RIVETS TO BRACKET AND 5-7/8 RIVETS IN 6" x 3 1/2" x 150 BACK BAR.

## KEEL OUT

52" x 178 FOR 1/2 LENGTH TO 168 AT ENDS. BUTTS WELDED.

## A IN

78" x 63 FOR 1/2 LENGTH TO 150 AT ENDS. BUTTS WELDED.

## B OUT

69 1/2" x 63 FOR 1/2 LENGTH TO 150 AT ENDS. BUTTS WELDED.

## C CLINKER

69 1/2" x 63 FOR 1/2 LENGTH TO 150 AT ENDS. BUTTS WELDED.

## D IN

69 1/2" x 63 FOR 1/2 LENGTH TO 150 AT ENDS. BUTTS WELDED.

## FORECASTLE.

STRINGER PLATE 136 BUTTS WELDED.

STRINGER ANGLE 3 1/2" x 3 1/2" x 1375.

DECK PLATING 132 UNHEATED BUTTS WELDED.

SIDE PLATING 140. IR SEAMS BUTTS WELDED.

BEAMS ON EVERY FRAME SEE PROFILE.

BULWARK VERTICAL FRG. 59-113

PLATE 28 WITH 6" x 3 1/2" x 135 B.A.

RAIL HOOKED. STIFFERS 3" x 3" x 1375 O.A.

STAYS 8" x 150 B.P.

## L IN

58" x 69 FOR 1/2 LENGTH TO 146 AT ENDS. BUTTS WELDED.

## K OUT

58" x 64 FOR 1/2 LENGTH TO 146 AT ENDS. BUTTS WELDED.

## J IN

78" x 62 FOR 1/2 LENGTH TO 146 AT ENDS. BUTTS WELDED.

## H OUT

78" x 62 FOR 1/2 LENGTH TO 146 AT ENDS. BUTTS WELDED.

LINERS FITTED IN WAY OF OUTSIDE STRAKES AT WATERTIGHT BULKHEADS. BROAD LINERS FITTED AT FORE AND AFT PEAK BULKHEADS AND BULKHEAD DIVIDING THE FORWARD HOLD.

## G IN

78 1/2" x 62 FOR 1/2 LENGTH TO 146 AT ENDS. BUTTS WELDED.

**NOTE.**

SEE PROFILE FOR 158 SHELL IN LIEU OF SIDE STRINGERS.

ROSS PLATE ROLLED AND WELDED - 62.

## F CLINKER

80 1/2" x 62 FOR 1/2 LENGTH TO 146 AT ENDS. BUTTS WELDED.

## E OUT

78 1/2" x 63 FOR 1/2 LENGTH TO 150 AT ENDS. BUTTS WELDED.

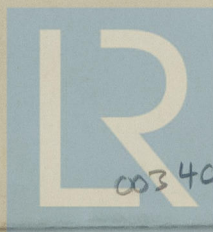
RADIUS OF BILGE 3'-9"



Empire Baxter — "Paris City"  
midship section  
is fitted

Barrow Report no 2855.

RETAIN



© 2021

Lloyd's Register  
Foundation

003 409-003416-0192