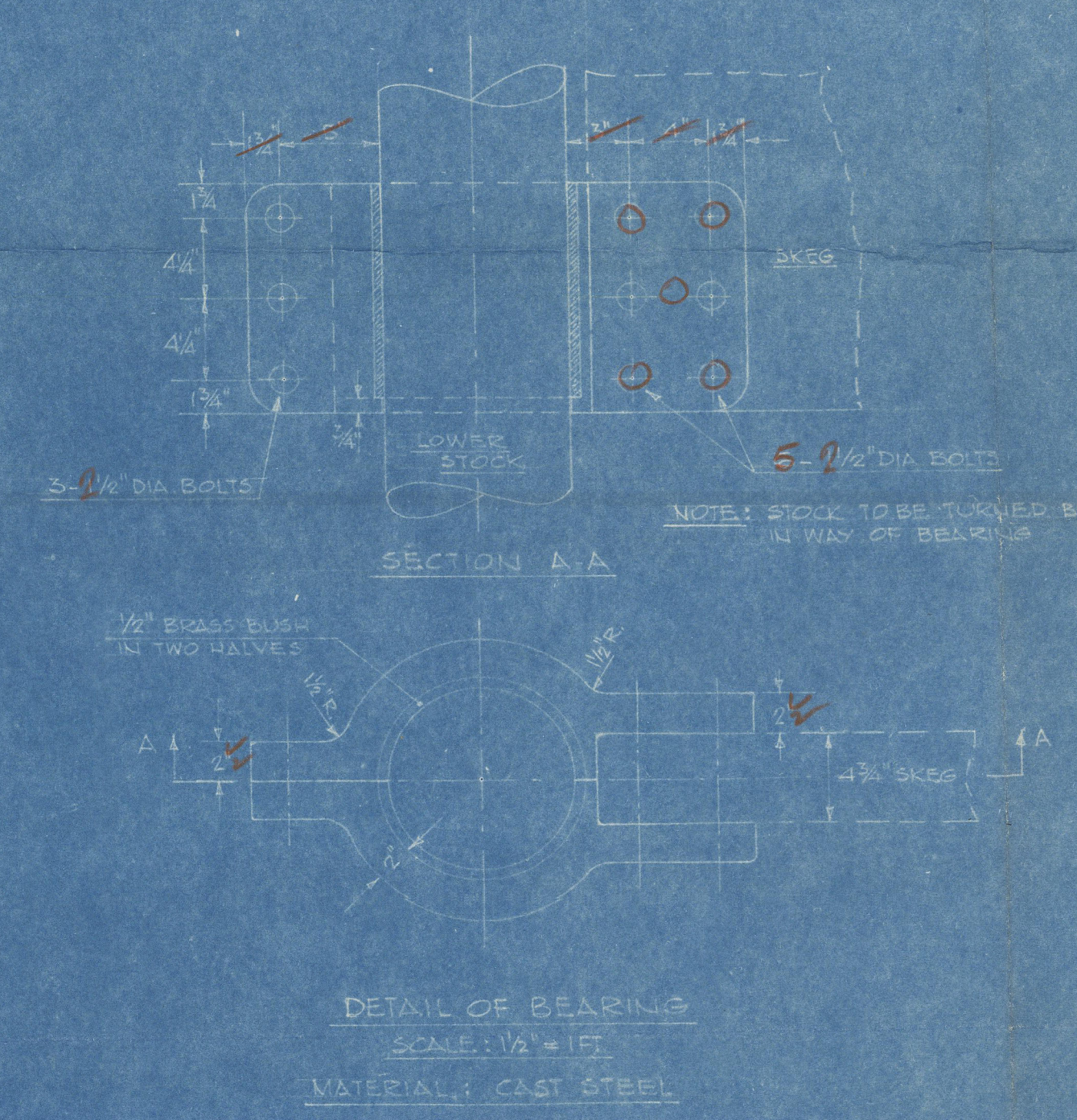
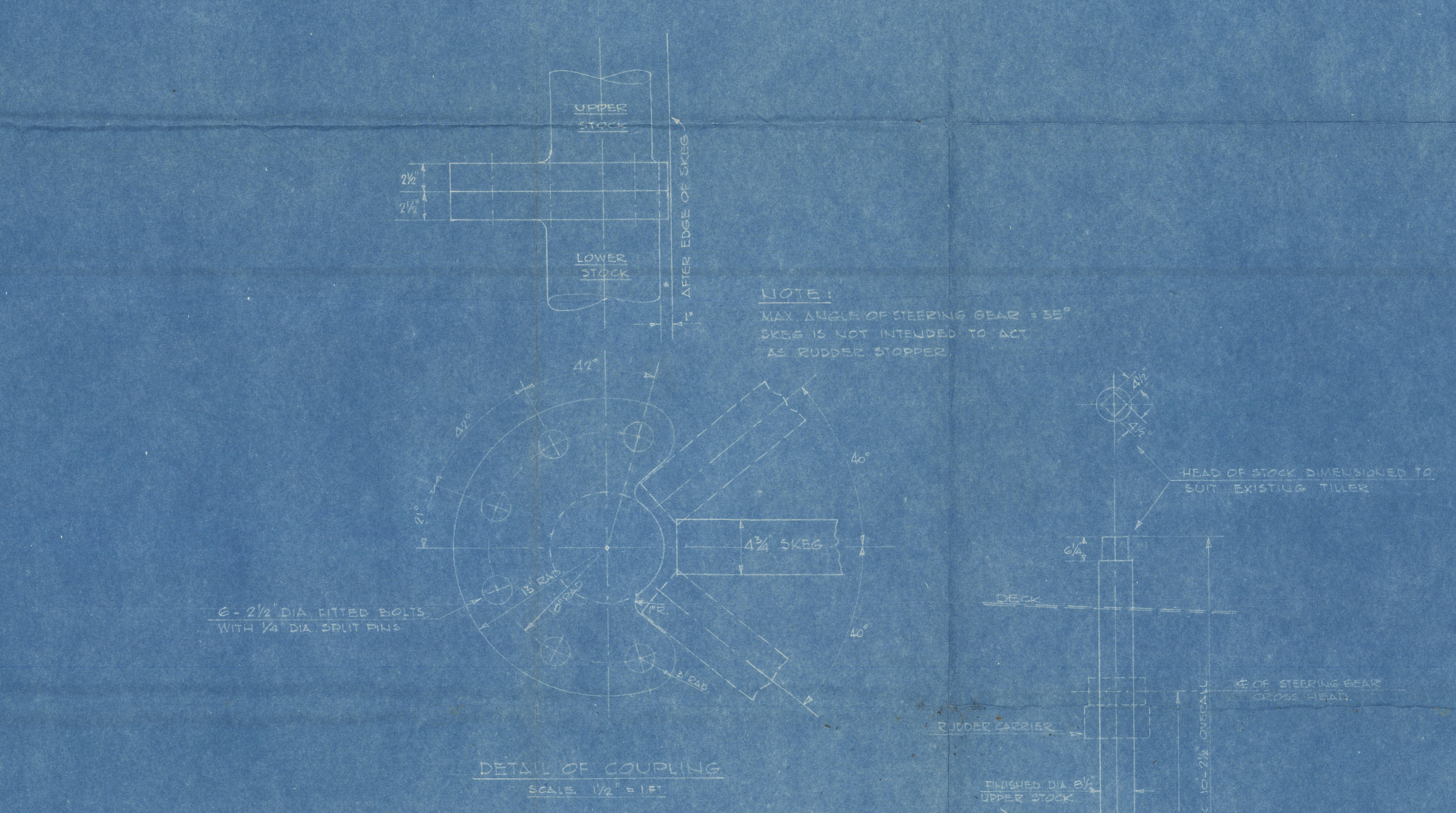


15 FEB 1947



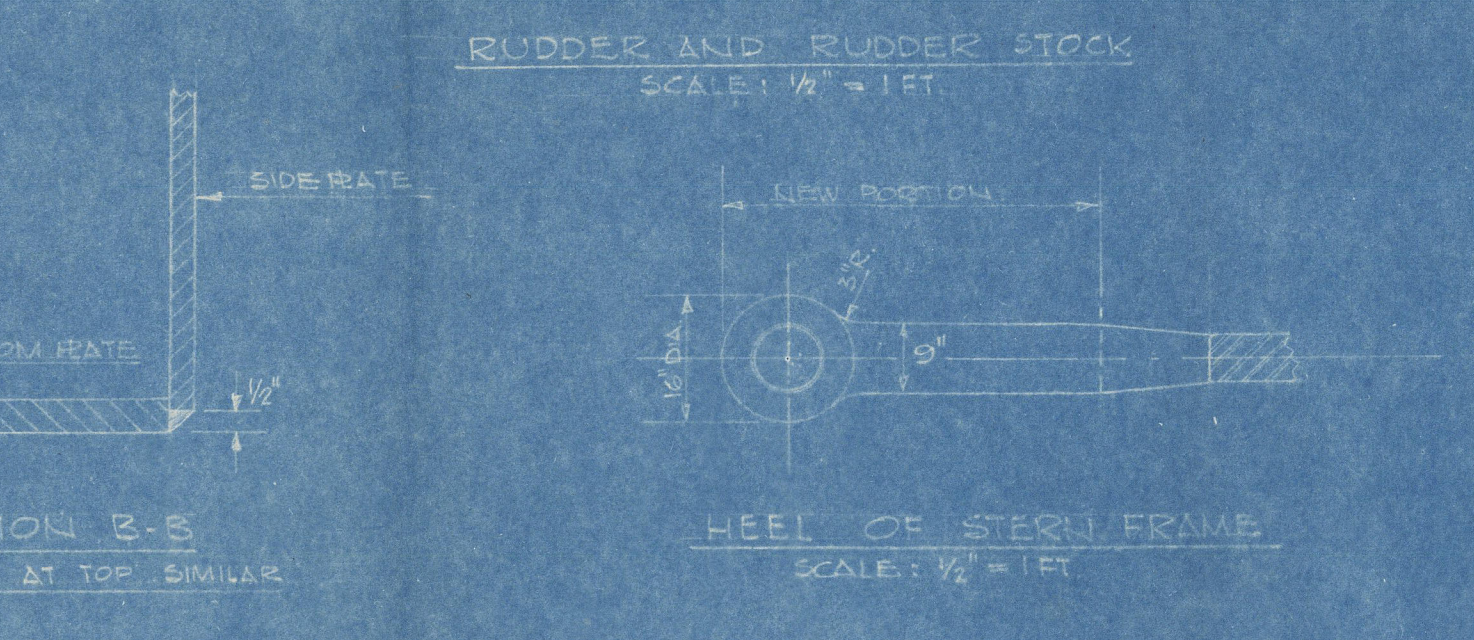
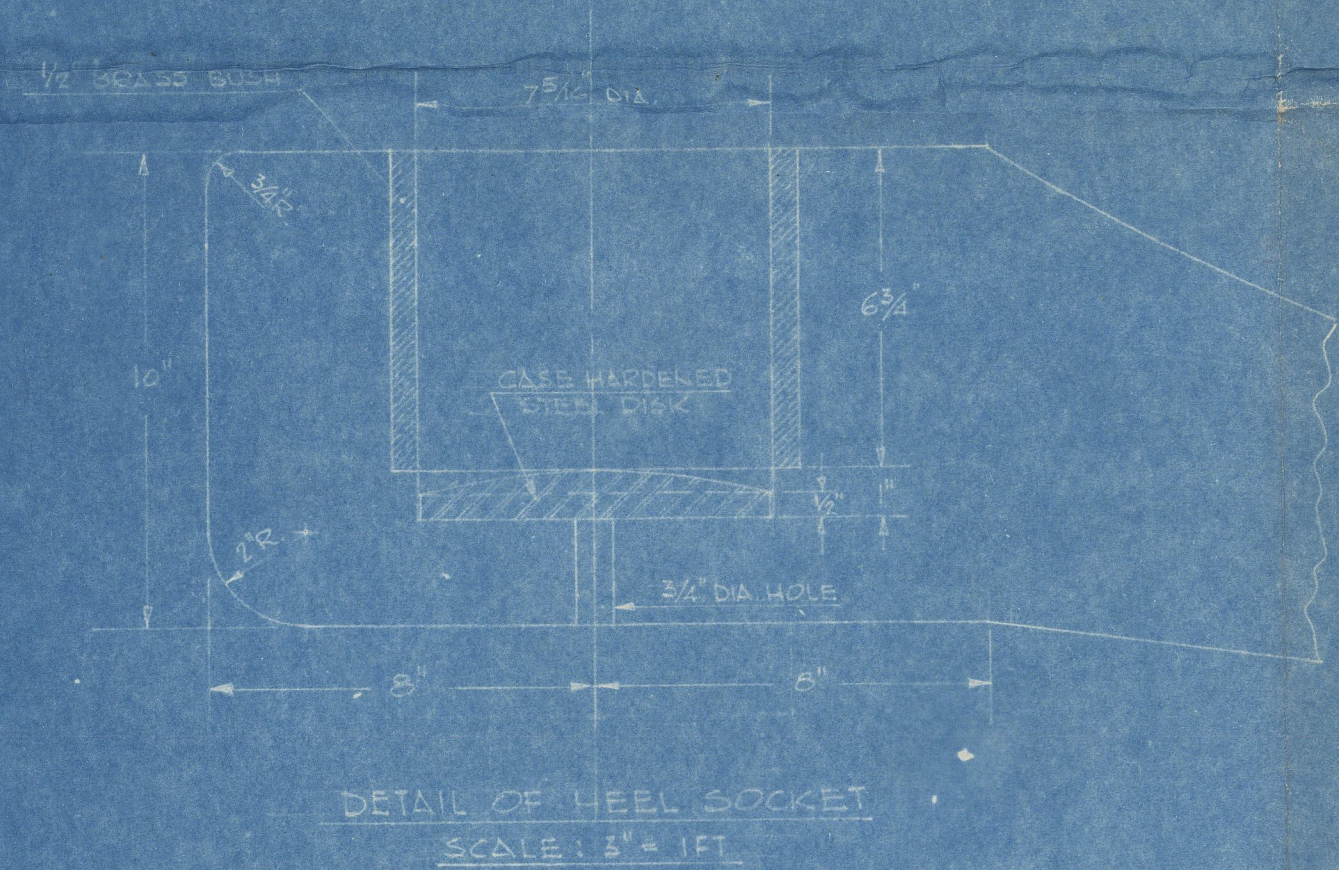
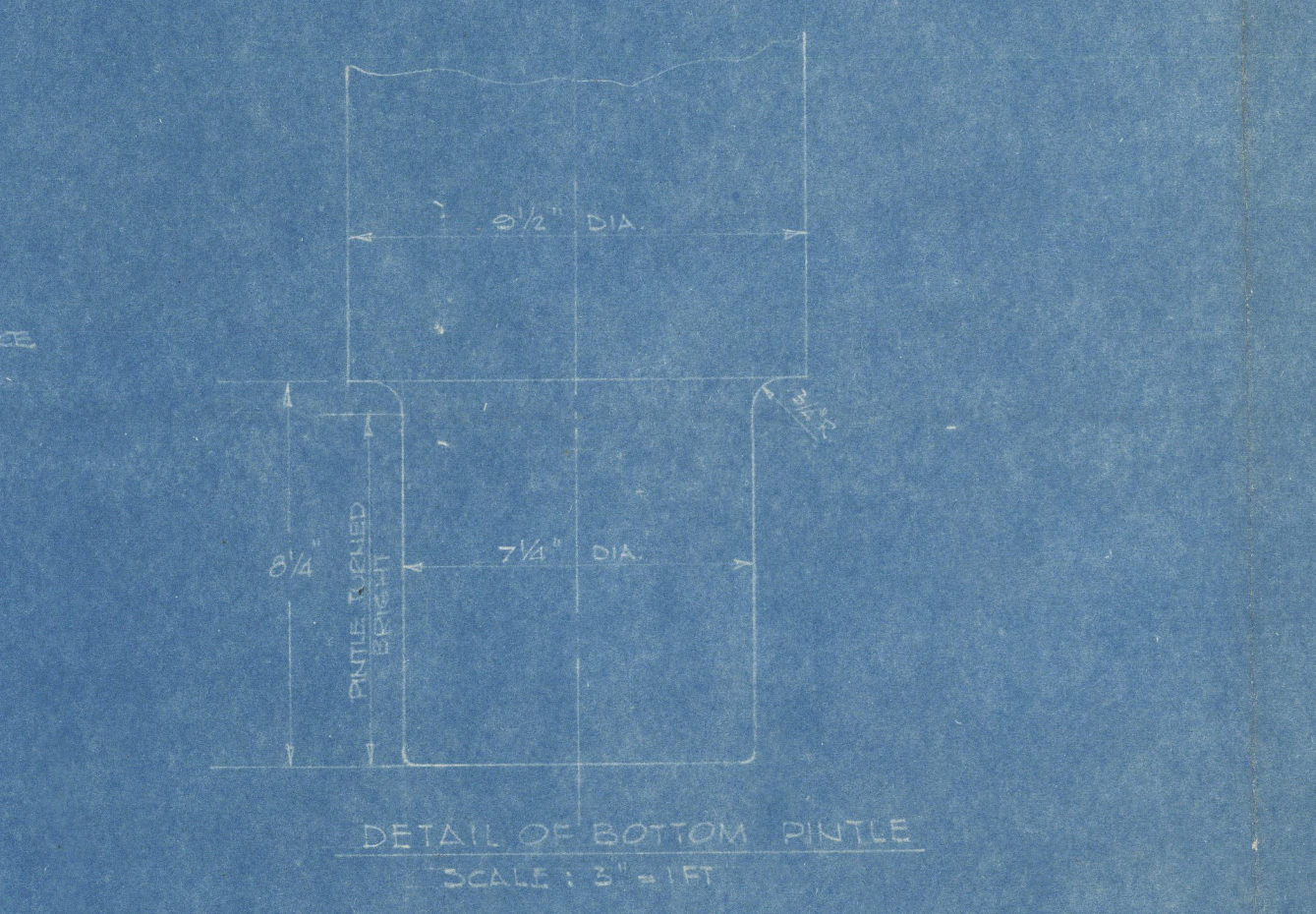
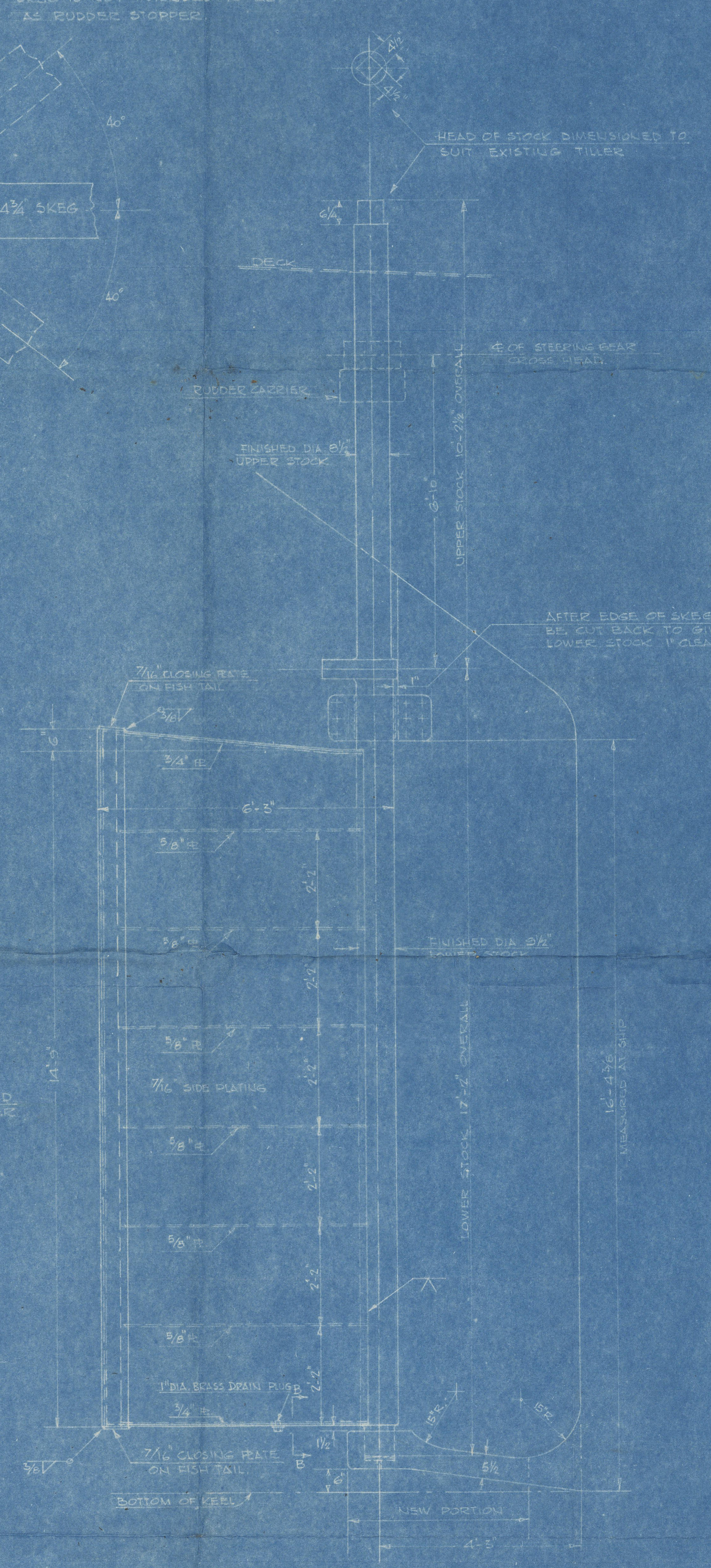
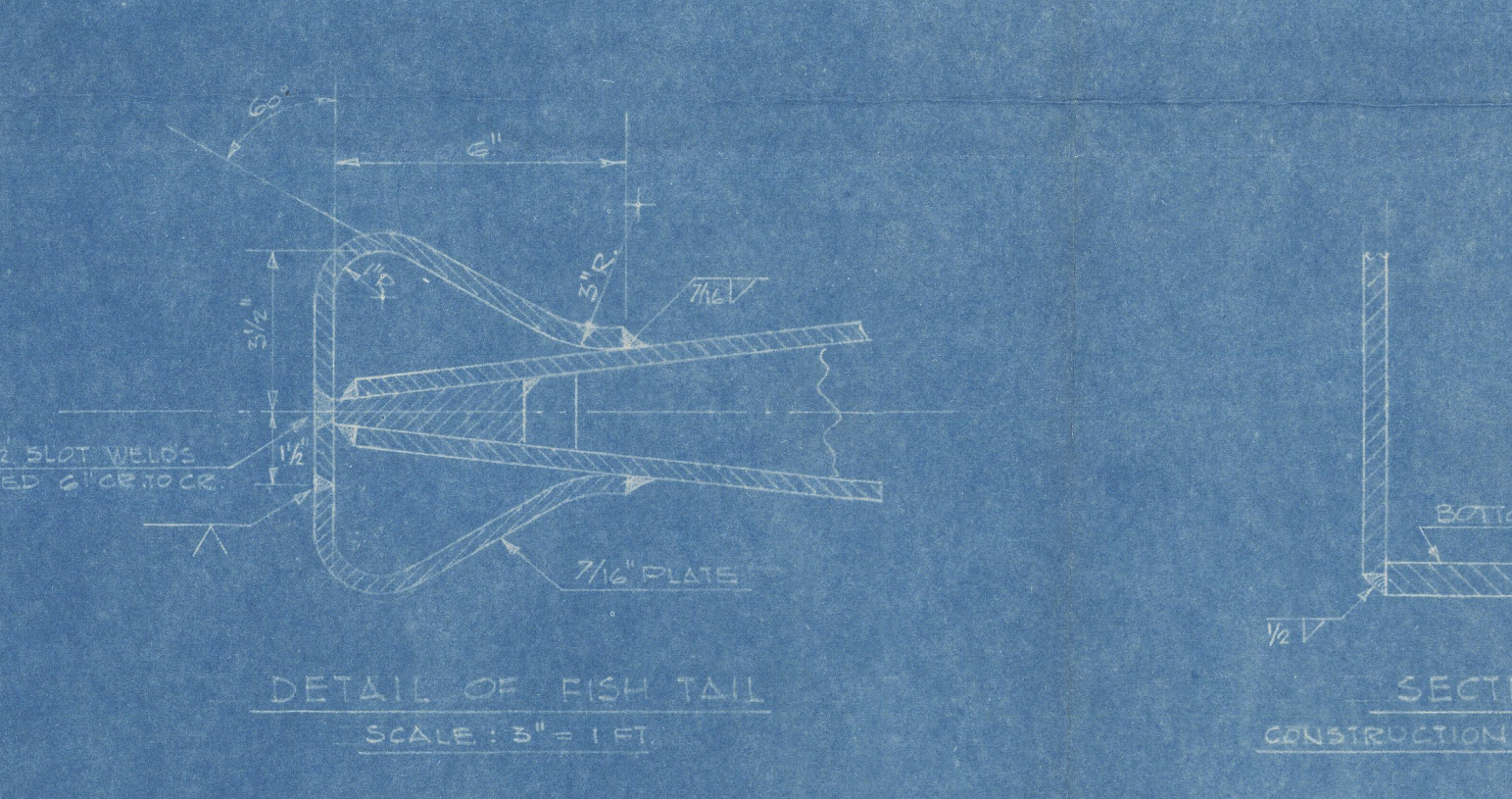
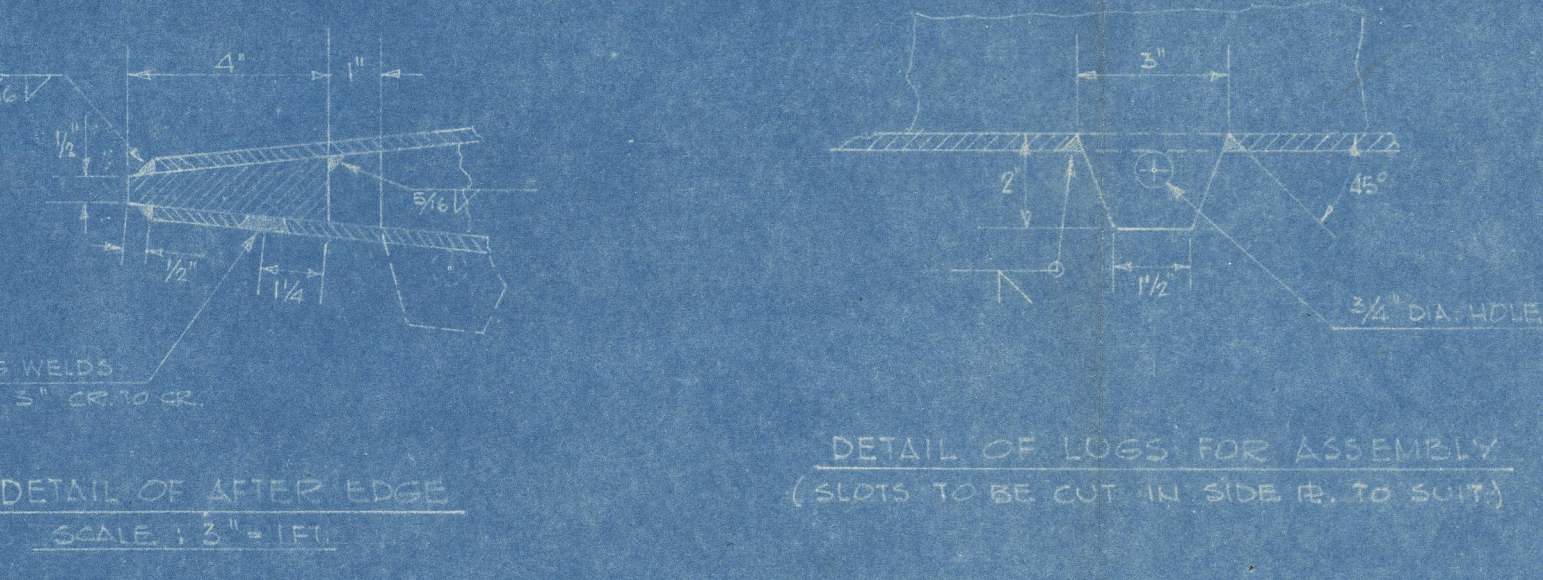
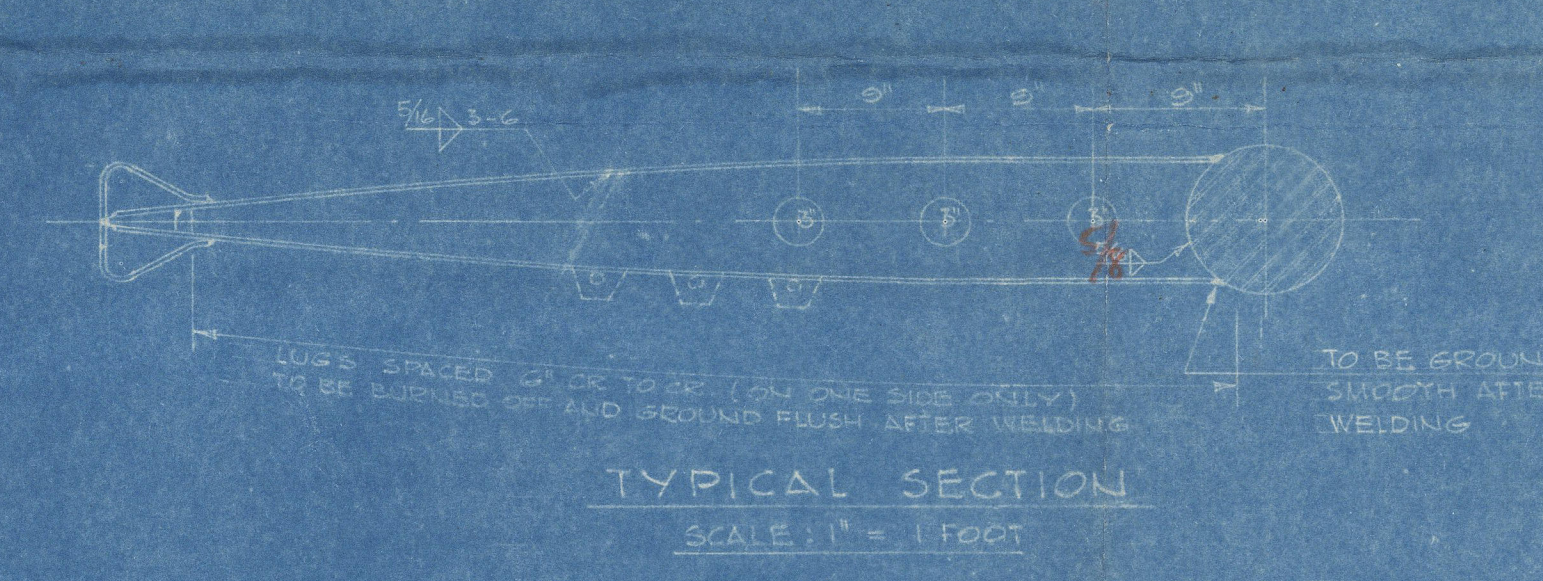
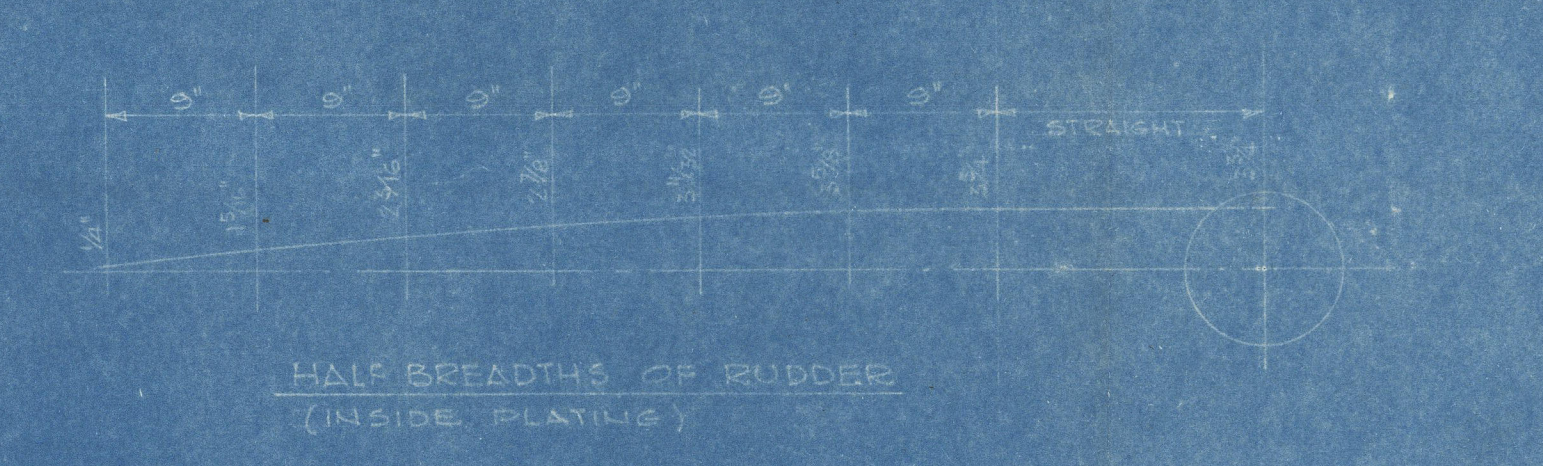
GENERAL NOTES

UPPER STOCK AND PALM OF COUPLING:
MATERIAL: FORGED STEEL (TO B.C. TESTS AND REQUIREMENTS)
APPROX. WT.:
MACHINING: STOCK TURNED THROUGHOUT AND MACHINED TO SUIT. CROSSHEAD OF STEERING GEAR AND RUDDER CARRIERS, PALM AND HEAD OF STOCK TO BE MACHINED TO FINISHED DIMENSIONS.

LOWER STOCK AND PALM OF COUPLING:
MATERIAL: FORGED STEEL (TO B.C. TESTS AND REQUIREMENTS)
APPROX. WT.:
MACHINING: STOCK TO BE TURNED THROUGHOUT. PALM AND BOTTOM PINTLE TO BE MACHINED TO FINISHED DIMENSIONS.

DIMENSIONS: ALL DIMENSIONS GIVEN ARE FINISHED DIMENSIONS.

TESTING OF RUDDER: RUDDER TO BE FILLED AND TESTED FOR WATERTIGHTNESS ON COMPLETION WITH 8'-0" HEAD OF WATER.



With reference to reinforcing plates fitted on the stern frame, shiplane above and below the weld, these plates were approximately 18" long and they covered the width of the shiplane, but about one inch each side.

See letter 3-4-47

MARINE INDUSTRIES LIMITED
SOREL, QUE.
OCT 3 1946

| | |
|--|--------------------------|
| MARINE INDUSTRIES LIMITED SOREL, P.Q. | |
| S.S. "PINEBRANCH" | |
| RUDDER & RUDDER STOCK | |
| Drawn: <i>W. H. H.</i> | Checked: <i>W. H. H.</i> |
| Traced: <i>W. H. H.</i> | AS GIVEN |
| Checked: <i>W. H. H.</i> | 1020 |
| JOB NO. 20321 (ITEM 1150) | 2-132 |

Rudder & Lock

5 in PINEBRANCH

montreal 15.2.47.

Boag

15 FEB 1947

PINEBRANCH.

Marine Industries Ltd

Rudder & Lock

5500-021500-814300

© 2020

Lloyd's Register
Foundation