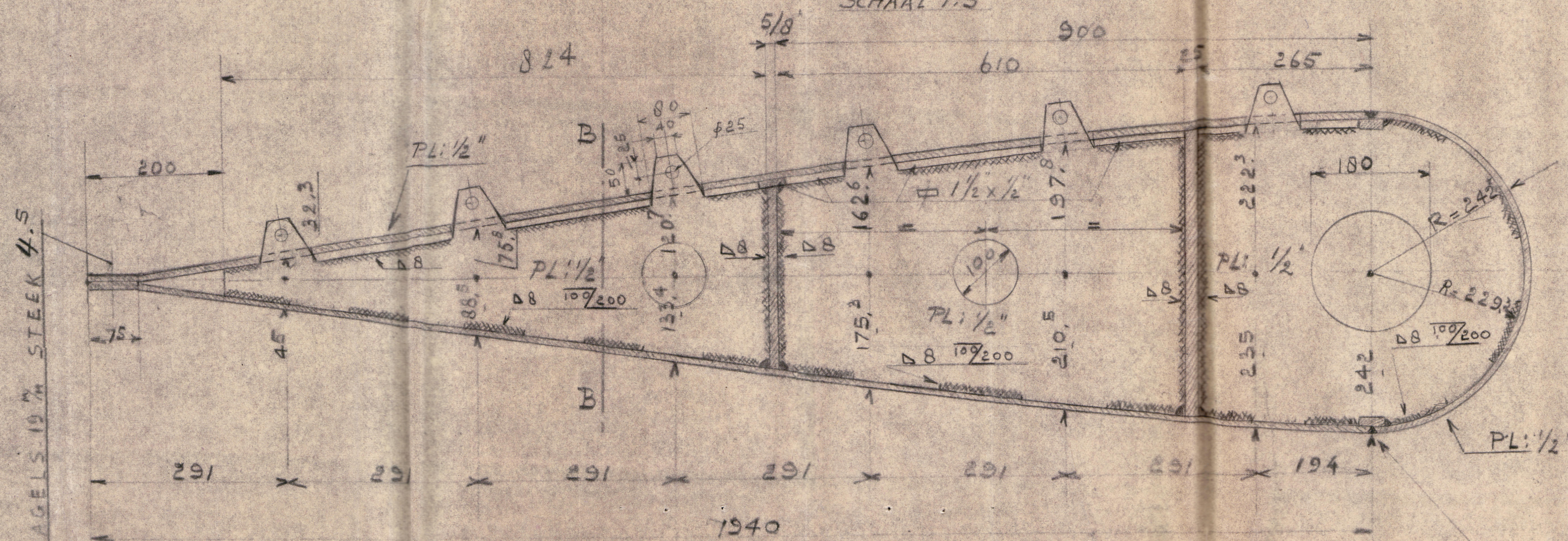
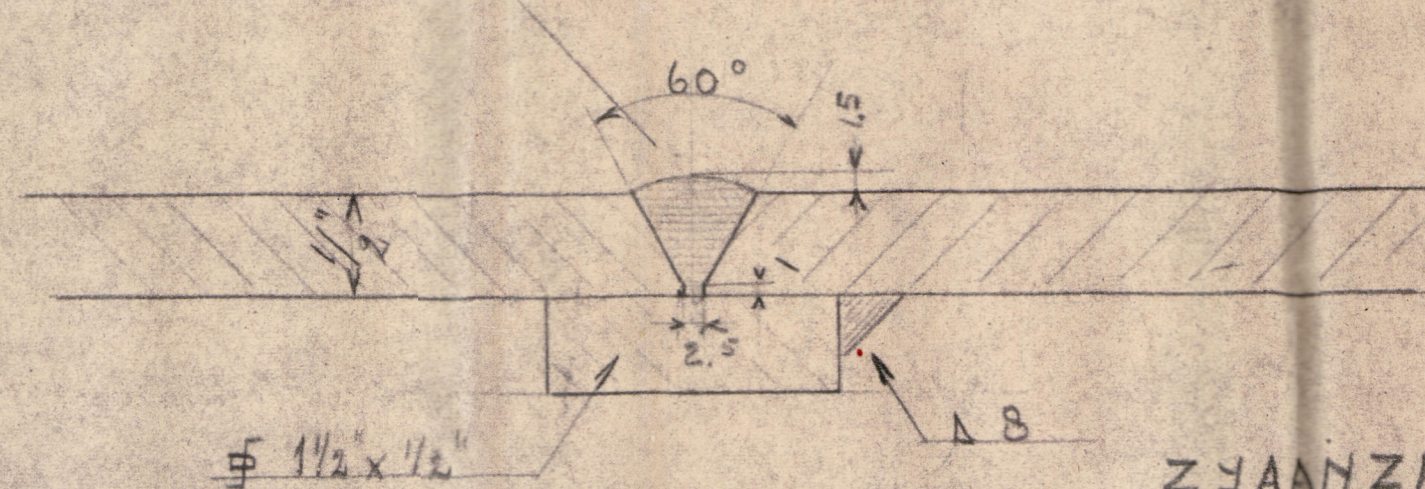


Technical drawing of a vertical support structure. It shows a vertical post with a horizontal crossbar. The post has a diameter of  $\frac{1}{2}$ " at its base. The crossbar has a width of  $1\frac{1}{2} \times \frac{1}{2}$ ". The distance from the base of the post to the center of the crossbar is  $\frac{1}{2}$ ". The distance from the center of the crossbar to the edge of the base is  $\frac{1}{2}$ ". A vertical line with a crossbar is shown above the main structure, possibly representing a different view or a related component.

SCHAAL 1:5



"Kota Inter"  
Sta. 4330



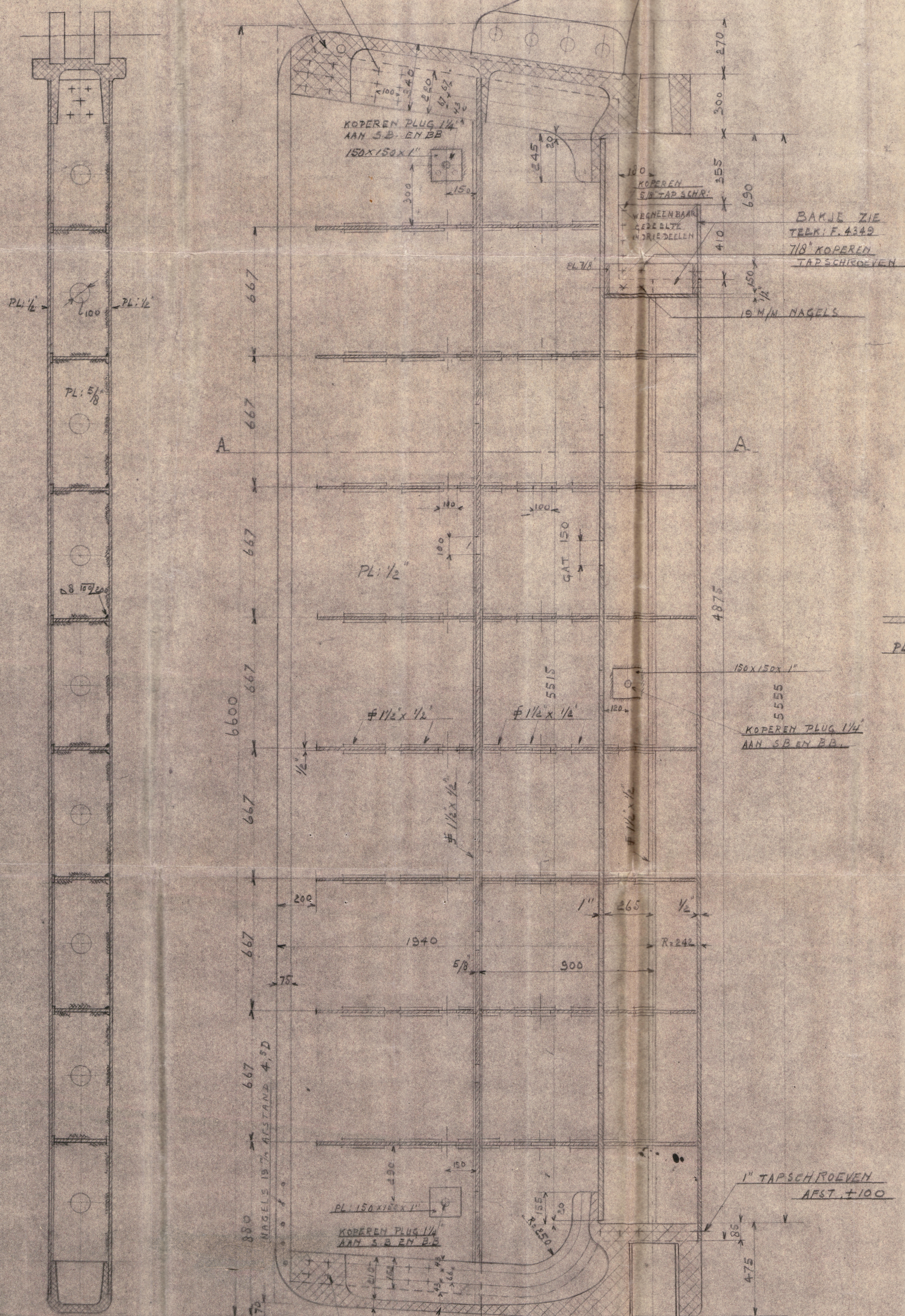
ZYAA NZICHT ROER B.B.

SEHAAL 1:20

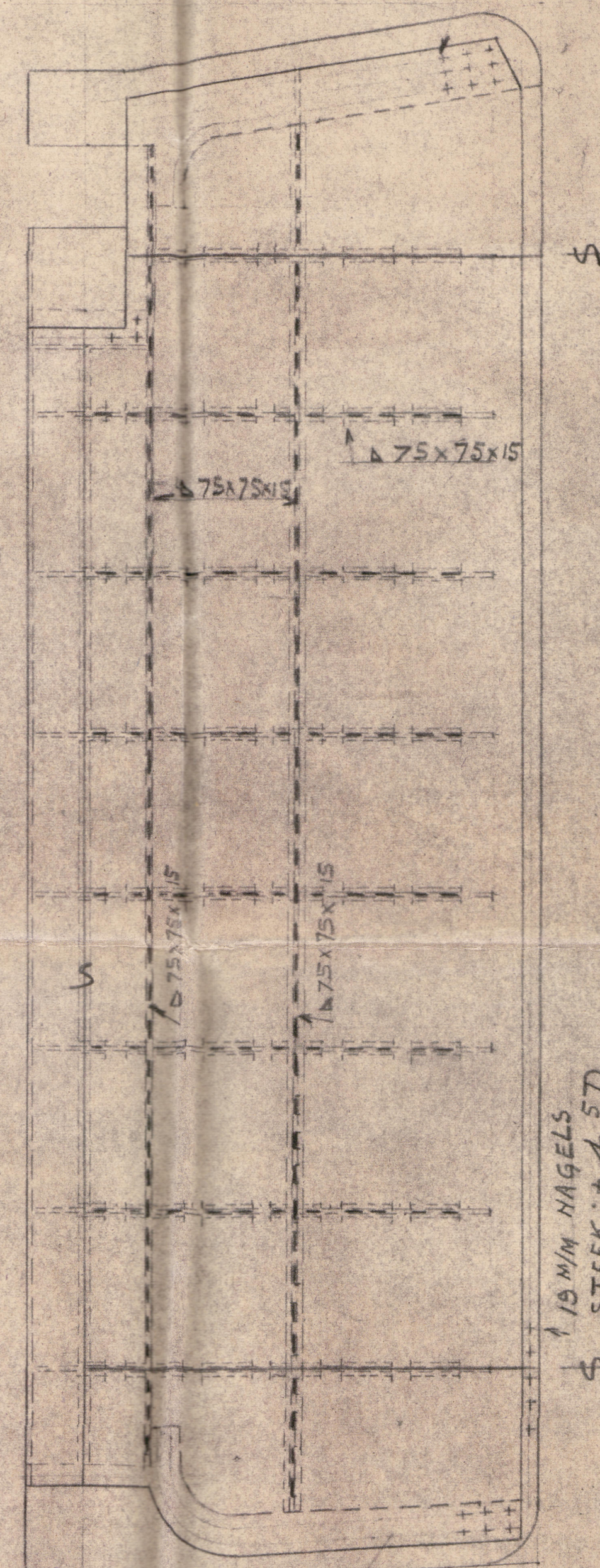
1" TAP SCH. 40  
STEEL: 100

DOORSNEDE C.C.

AAN S.B. 25<sup>M</sup>/M NAGELS  
" BB. 1" TAPSCHROEVEN

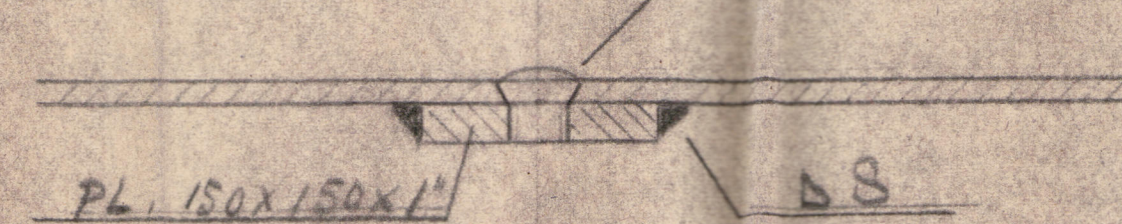


AAN 5 B 25 M NAGELS  
1 B B 1" TAPSCHROEVEN



1<sup>st</sup> TAP SCHR:  
STEAK: ± 100

KOPEREN PLUG 1 1/4"



M.S. KOTA INTEN

1	ROER				FL: 1ZER		1
KAN. TAL	OMSCHRIJVING				MATERIAAL		BEREKENING
N.V. DROOGDOK MIJ. SOERABAJA							
DAT. BESTEMMING		ROER				No. B-2810	
GEB. GED. DATUM		SCHAAL		AFGEBOV. AAN AFD.		DATUM GEEN	
24/11/15		1:10		1:5		19/12/15	

003458-003465-0061