

Lloyd's Register of Shipping

 Index No. *12576*
 (For London Office only).

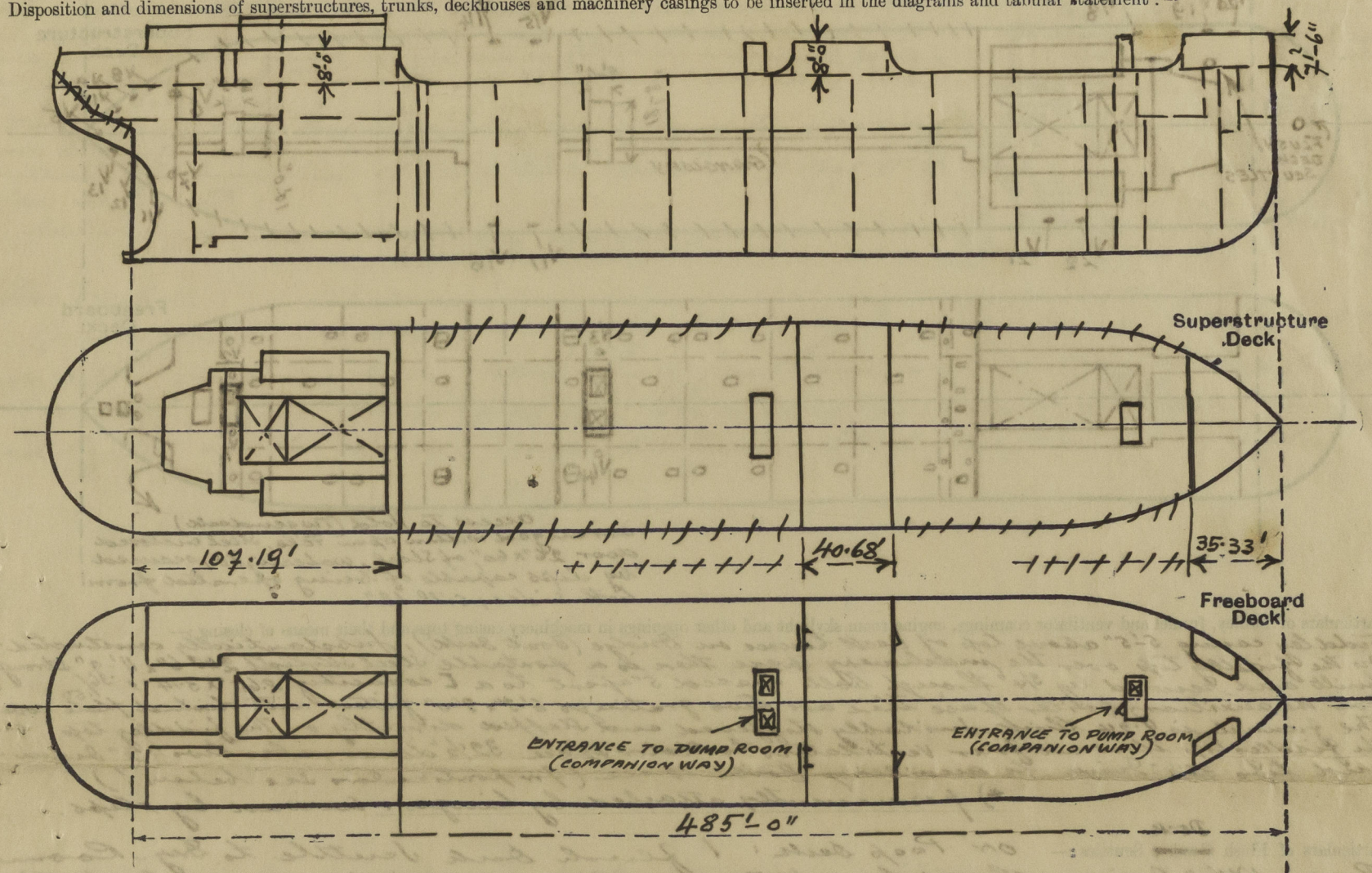
SURVEYS FOR FREEBOARD.

(CONDITIONS OF ASSIGNMENT.)

(As built)

Ship's Name *JAMES J. MAGUIRE*Port of Survey *Treite*Official Number *167242*Surveyor's Signature *M. Miceli*Nationality and Port of Registry *LONDON, BRITISH*Date of Survey *During construction*

Disposition and dimensions of superstructures, trunks, deckhouses and machinery casings to be inserted in the diagrams and tabular statement:—



Particulars of Superstructures, Trunks, Casings, Deckhouses.

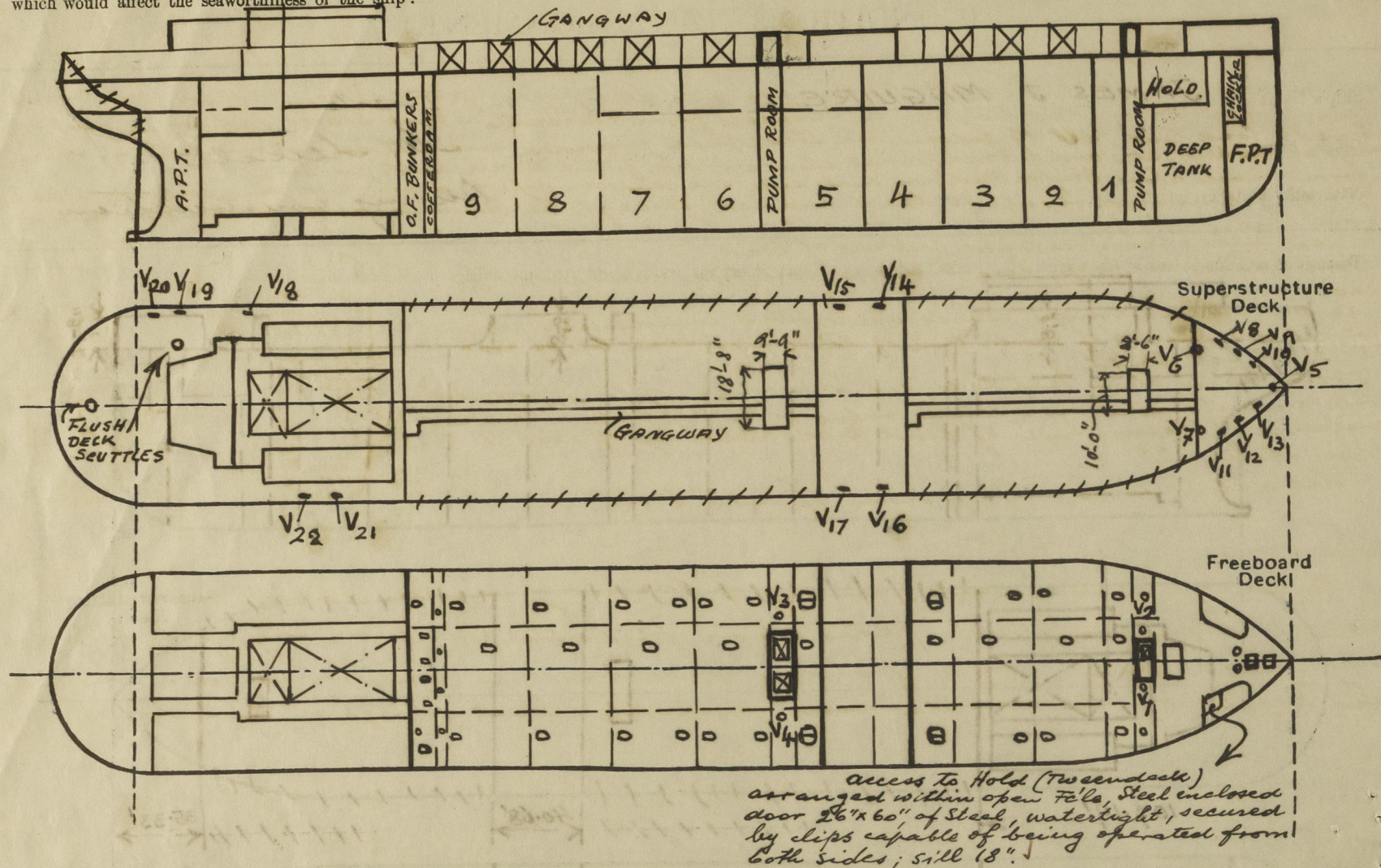
	Coaming	Plating	Stiffeners	Spacing	End Attachments of Stiffeners	Size of Openings	Height of Sills	Height of Casings
Poop Bulkhead ...	14x.50	.50	L 11x3 1/2x.54 + 2 LONG. BREADS	30" + 32"	TOP: BRACKETED HEEL: ELECT. WELDED TO DECK	2 OFF 60"x28"	18"	8'-0"
Raised Quarter Deck Bulkhead ...								
Bridge, After Bulkhead ...	12x.41	.36	L 7x3 1/2x.34 + 2 LONG. BREADS	41 1/2 - 42 1/2	TOP AND BOTTOM ELECT. WELDED TO BRIDGE RESTR. UPPER DECK	2 OFF 52 3/4"x40"	18"	8'-0"
Bridge, Forward Bulkhead ...	12x.50	.50	L 10x3 1/2x.50 + 2 LONG. BREADS	41 1/2 - 42 1/2	TOP: BRACKETED ELECT. WELDED TO UPPER DECK	2 OFF 60"x28"	18"	8'-0"
Forecastle Bulkhead ...				OPEN				7'-6"
Trunk, Aft ...								
Trunk, Forward ...								
Exposed Machinery Casings on Freeboard or Raised Quarter Decks ...	14x.50	.50	L 11x3 1/2x.54	30" + 32 1/2"	BRACKETED AT TOP AND BOTTOM	1 OFF 60"x3 1/2"	18"	8'-0"
Exposed Machinery Casings on Superstructure Decks (FRONT HEAD) ...	6 1/2x.36	.34	L 6x3x.36	30" + 31 1/2"	TOP: CONTINUOUS HEEL: BRACKETED	NO OPENINGS		7'-6"
Machinery Casings within Superstructures not fitted with Class I Closing Appliances ...								
Deckhouses on Flush Deck Ships ...								

Particulars of Closing Appliances (state if capable of being manipulated from both sides).

Poop Bulkhead ...	2 W.T. hinged Steel Doors secured by clips capable of being operated from both sides.
Raised Quarter Deck Bulkhead ...	
Bridge, After Bulkhead ...	2 portable strong framed Steel plates secured by hook bolts spaced 13" apart, not passing through the Bulkhead plating (Tonnage openings).
Bridge, Forward Bulkhead ...	2 W.T. hinged Steel Doors secured by clips capable of being operated from both sides.
Forecastle Bulkhead ...	OPEN
Exposed Machinery Casings on Freeboard or Raised Quarter Decks ...	1 opening closed by a hinged Steel plate, made W.T. by hemp packing & secured by 1/2" bolts passing through the Bulkhead plating & spaced about 4 1/2" apart.
Exposed Machinery Casings on Superstructure Decks ...	No openings
Machinery Casings within Superstructures not fitted with Class I Closing Appliances ...	
Deckhouses on Flush Deck Ships ...	

PARTICULARS OF PROTECTION TO OPENINGS, ETC.

The following diagrams should be used to indicate the positions of cargo and coaling hatchways, gangway, cargo and coaling ports, ventilators, companionways, etc., which would affect the seaworthiness of the ship:-



Particulars of fiddle, funnel and ventilator coamings, engine room skylight and other openings in machinery casing tops and their means of closing:-
Fiddle casing 5'-5" above top of deck houses on bridge (boat deck), substantially constructed. On the fiddle top over the machinery space there is a portable steel skylight 3'-0" x 11'-9" strongly built and secured by 3/4" through bolts spaced 5" apart to a T coaming 8'-6" x 3'-14" x 1/2" over the auxiliary boiler space there are two gratings 6'-3" x 3'-0" fitted with dished plate covers. The funnel is 0.24 thick, suitably stiffened and stepped directly on the fiddle top. The fiddle top there are four ventilators to motor space 32 1/2" diam., also two 4 1/2" diam. and two 3 1/2" diam. to auxiliary boiler space (for particulars see below).
*) permanently attached by hinges & secured by clips.

Particulars of Flush Deck Scuttles:-
ON POOP DECK: 1 flush deck scuttle to Dry Room in Poop 17 1/2" diam., closed by a W.T. cover (rubber packing) secured by 4 clips; 1 flush deck scuttle to Poop space aft 14" diam. closed by W.T. cover (rubber packing) secured by 3 clips.

Particulars of Companionways:-
ON FREEBOARD DECK: Entrance to forward Pump Room 8'-6" length x 10'-0" breadth x 7'-6" height, coaming plate 6'-4" x 3'-2" spaced @ 3 1/2" in side. 3 leads and 30" in end boards, bracketed at top & electrically welded to bulk at bottom. In after board one opening 54 1/2" x 28" closed by a hinged steel W.T. door secured by clips capable of being operated from both sides. Entrance to Pump Room amidships 9'-4" length x 18'-8" breadth x 8'-0" height coaming 6'-4" x 18" spaced @ 3 1/2" in side. 3 leads and 30" in end boards, bracketed at top & electrically welded to bulk at bottom. In after board one opening 54 1/2" x 28" closed by hinged steel W.T. door, secured by clips capable of being operated from both sides; sill 18".

Particulars of Ventilators in exposed positions on freeboard and superstructure decks:-

No.	POSITION	DIAM.	THICKNESS	HEIGHT	LEADING TO:	MEANS OF CLOSING	REMARKS
1-2	ON FREEBOARD DECK	16 1/2"	1/4"	10'-3"	PUMP ROOM FORWARD	HINGED STEEL W.T. COVERS	FASTENED TO BULKHEAD BY DERRICK POSTS
3-4	"	24"	1/4"	30'-3"	PUMP ROOM AMIDSHIPS	"	"
5-6	"	16 1/2"	1/4"	36"	FORE PEAK SPACE & HOLD	HINGED STEEL W.T. COVERS	"
7	"	16 1/2"	1/4"	44"	HOLD	"	"
8-13	"	8 3/4" OVAL	1/4"	36"	STEEL ENCLOSED SPACE IN OPEN RIG	"	"
14-17	"	8 3/4" OVAL	1/4"	18"	SPACES IN BRIDGE	"	"
18-22	"	8 3/4" OVAL	1/4"	18"	VARIOUS STAIR ROOMS IN POOP	"	"
23-39	"	9"	1/4"	18"	PORTABLE STEEL SCREEN DOWN W.T. COVERS	"	"
40	"	4"	1/4"	22"	VARIOUS ACCOMMODATION SPACES	DETTO	"
41-45	"	4"	1/4"	20 1/2"	"	DETTO	"
46-48	"	13 1/2"	1/4"	22"	"	DETTO	"
49-50	"	4"	1/4"	24"	"	DETTO	"
51-53	"	16 1/2"	1/4"	30"	STEERING ENGINE ROOM	DETTO	"
54-55	"	18 1/2"	1/4"	31 1/2"	"	DETTO	"
56-58	"	14 1/2"	1/4"	23 1/2"	"	DETTO	"
59	"	3"	1/4"	19 1/2"	VARIOUS ACCOMMODATION SPACES	DETTO	"
60-61	ON TOP OF DECKHOUSE	18 1/2"	1/4"	34"	AND PASSAGEWAYS	DETTO	"
62-63	"	22 1/2"	1/4"	34"	"	DETTO	"
64-65	"	32 1/2"	1/4"	41'-10"	MOTOR SPACE	"	"
66-67	"	32 1/2"	1/4"	41'-10"	"	"	"
68-69	"	32 1/2"	1/4"	41'-10"	CLUX. BOILER SPACE	"	"
70-71	"	48"	1/4"	61'-4"	"	"	"
72-74	"	48"	1/4"	18"	PORT. STEEL SCREEN DOWN W.T. COVERS	"	"

Particulars of Air Pipes in exposed positions on freeboard, raised quarter, or superstructure decks:-

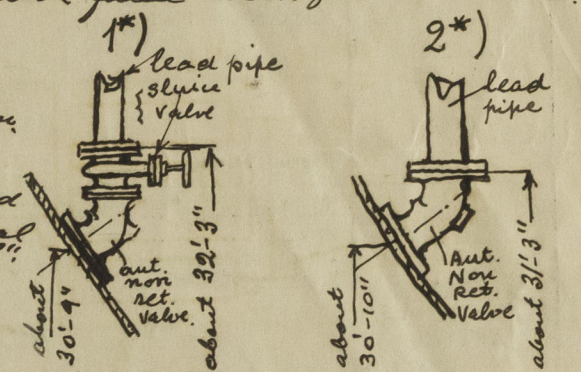
ON FREEBOARD DECK	2 OFF	2 DIM.	TO COFFERDAM FORWARD	HEIGHT OF OPENINGS ABOVE DECK	36"
"	1 OFF	4"	TO SETTLING TANKS	"	9'-0"
"	6"	"	TO OIL FUEL BUNKERS	"	9'-6"
"	2 OFF	6"	TO COFFERDAM AFT	"	36"
ON FREEBOARD DECK WITHIN OPEN FORECASTLE	2 OFF	4"	TO DEEP TANK	"	36"
ON FORE DECK	1 OFF	6"	TO FORE PEAK TANK	"	36"
ON POOP DECK	15 OFF	2"	TO D.B.T., A.P.T. & COFFERDAM	"	18"
"	1 OFF	4"	TO AFTER PEAK SPACE	"	36"

All above pipes substantially constructed and provided with hinged W.T. lids, secured by butterfly nuts, except those marked * which are provided with automatic closing appliances.
Air pipes from Centre & Wing Cargo Tanks substantially constructed and carried up to Fore & Main masts.

Particulars of Gangway Cargo and Coaling Ports:-

NONE

Particulars of Scuppers and Sanitary Discharge Pipes:-
No Scuppers or soil pipes from spaces below freeboard deck. Scuppers from Forecastle & Poop spaces discharging near or above the load line, all of galvanized steel; pipes provided each with an automatic non return valve on the ship's side, and an additional sluice valve fitted in accessible position. From spaces above Bridge Deck, on each side, one scupper pipe 4" diam. and one soil pipe 6" diam. both of galvanized steel 1/4" thick and led through the Summer tanks to ship's side above load line, each provided with an automatic non return valve fitted above freeboard deck. The soil pipes above freeboard deck are of lead.
From spaces in Poop, two 5" diam. soil pipes each side, of lead; provided each with an automatic non return valve on ship's side and an additional sluice valve fitted in accessible position. Vertical distance of lower end of lead pipe above top of keel 31'-3". See Sketch 1.
From spaces above Poop Deck, one 4" soil pipe, of lead, provided with an automatic non return valve on the ship's side. Vertical distance of lower end of lead pipe above top of keel 31'-3". See Sketch 2.
All value chests on ship's sides of cast steel.



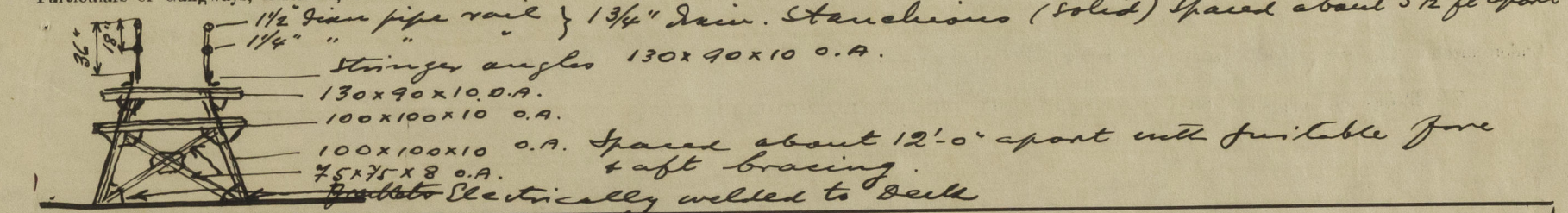
Particulars of Side Scuttles:-

Below freeboard deck, in way of steering engine space, between 2nd deck aft & freeboard deck, also above freeboard deck in way of Poop, Bridge & Fore, 15" diam. brass framed side scuttles with screw down hinged dead lights on the inside and portable steel plugs on the outside.

Vertical distance of Sill of lowest Side Scuttle above top of keel 40'-5 1/2"

Particulars of Guard Rails:-
ON FREEBOARD DECK, height 41", stanchions 1 1/2" diam. electrically welded to bulk and spaced about 5 feet apart; top rail 1 3/8" outer diam. pipe and 2nd & 3rd rail 1 1/4" outer diam. pipes equally spaced.
ON POOP & Fore Deck same as on freeboard deck.
ON BRIDGE DECK, same as on freeboard deck, but stanchions spaced about 5'-6".

Particulars of Gangways, Lifelines, etc.:-



Particulars of Freeing Arrangements.

	Length of Bulwark	Height of Bulwark	Size of Freeing Ports	Number each side	Area each side	Rule area each side
After Well	OPEN RAILS
Forward Well	"
State position of each freeing port (F. and A. position and height above deck edge)	After Well:-
State whether the freeing ports are fitted with shutters, bars, or rails, and give particulars of such:-	Forward Well:-
Additional area where sheer is less than standard.

PARTICULARS OF PROTECTION TO OPENINGS, ETC.

HATCHWAYS ON FREEBOARD AND SUPERSTRUCTURE DECKS									
Description of Hatchway		WITHIN OPEN POOLS 2 OFF TOP PEAK + CHARTLOCKER	1 OFF HOLD FLD	2 OFF Nos 1, 2, 3, 6, 7, 8, 9 WING + SUMMER TANKS COMBINED + ALL CENTRE T. Nos 4 + 5	4 OFF WING + SUMMER TANKS COMBINED Nos 4 + 5	6 OFF OIL FUEL BUNKERS	9 OFF CARGO BAYS + DECK TANKS + O.F. BUNKER ST.		
Dimensions of Hatchway		3' 7 1/2" x 3' 11"	10' 4" x 20' 0"	7' 0 1/2" x 4' 0 1/2"	7' 0 1/2" x 9' 6"	4' 1" x 2' 1"	2' 0" Round D.		
COAMINGS	Height above Deck	18"	31 1/2"	31 1/2"	31 1/2"	31 1/2"	23 1/2"		
	Thickness	.38 ✓	.44 ✓	.44 ✓	.44 ✓	.40 ✓	.38		
	Stiffeners	—	—	—	—	—	—		
	Brackets, Stays	—	—	—	—	—	—		
HATCH BEAMS		NONE							
FORE AND AFTERS		NONE							
HATCH COVERS		STEEL 1/40 STIFFENED HINGED W.T. HEMP PACKING	STEEL 1/48 STIFFENED HINGED W.T. HEMP PACKING	STEEL 1/50 STIFFENED HINGED O.T. HEMP PACKING	STEEL 1/50 STIFFENED 2 HINGED COVERS EACH O.T. HEMP PACKING	STEEL 1/50 HINGED O.T. HEMP PACKING	STEEL 1/40 HINGED O. of W.T. HEMP PACKING		
Spacing of FASTENINGS		22" x 24"	19 1/2"	17"	17"	16"	3 FASTENINGS		
Number of Tarpaulins		—	—	—	—	—	—		
*Are wood fore and afters steel shod at all bearing surfaces? _____ Are battens and wedges efficient and in good condition? _____ Are tarpaulins in good condition and in accordance with rule requirements? _____ Are lashings provided in accordance with rule requirements? _____									

Particulars of any special features:— *Longitudinally framed Tanker with two longitudinal Bulkheads, and Summer tanks in way of No 4, 5, 6 + 7 Tanks. Cruiser Stern.*

Endorsement at first survey and at surveys for renewal of Certificate:—
 The fittings and appliances are in accordance with the particulars shown on this form (or as now modified) and are in good condition.