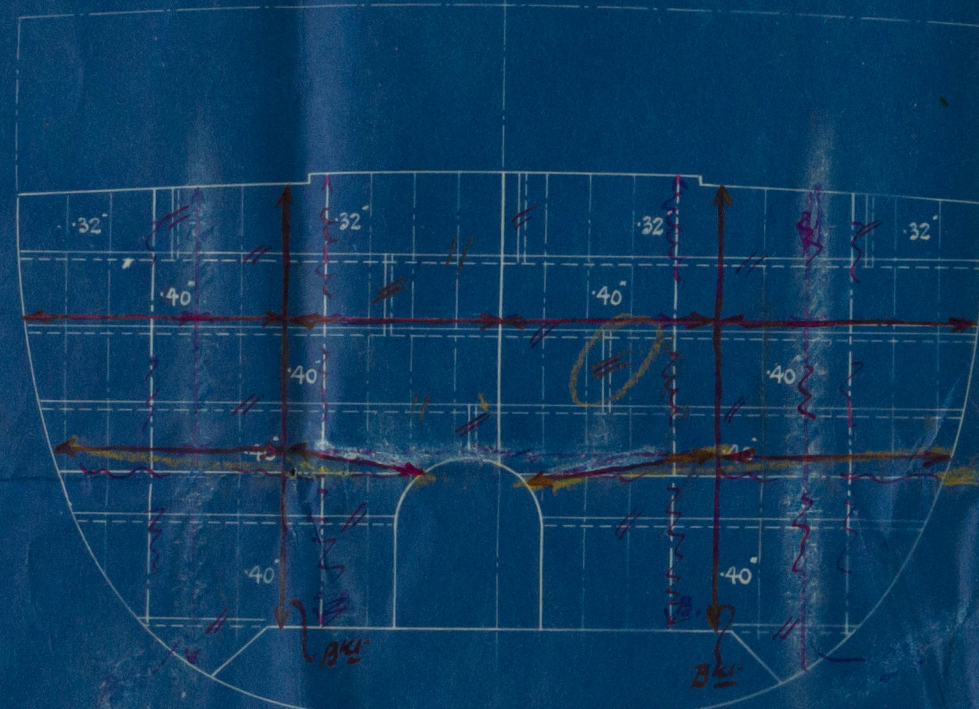


BULKHEAD FRAME 14.

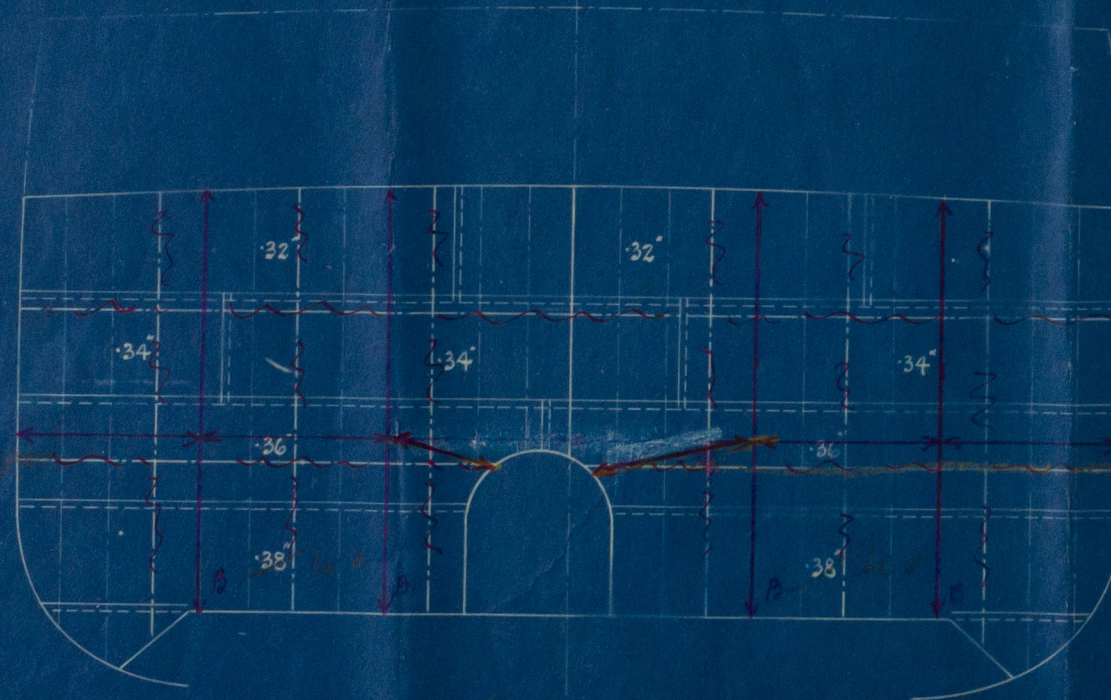
STIFFENERS 7" x 3" x 42" I. ABOUT 24" APART.



BULKHEAD FRAME 27.

2 WEB FRAMES ON EACH SIDE OF $\frac{1}{2}$ DEPTH AT BOTTOM 32" x 36" THICK.
STIFFENERS 7" x 3" x 42" I. ABOUT 24" APART.
BRACKETS AT TOP AND BOTTOM 21" x 21" x 42"
2 HORIZONTAL GIRDERS OF FLANGED PLATE .32" THICK
DEPTH 27" AND 25"

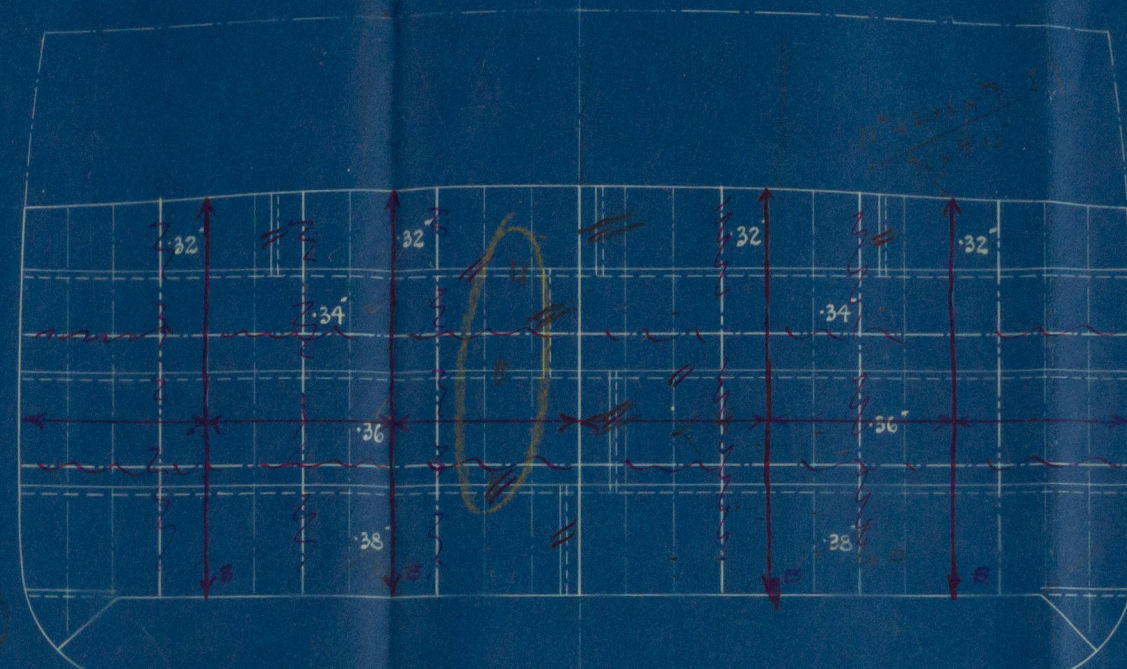
ALL BOUNDING BARS TO BE DOUBLE ANGLES $3\frac{1}{2}$ " x $3\frac{1}{2}$ " x 36".
OR SINGLE ANGLE $3\frac{1}{2}$ " x $3\frac{1}{2}$ " x 36" IN CONNECTION WITH BULB FRAME OR BEAM.
SEE ALSO DETAIL PLANS NO. D. 274.



BULKHEAD FRAME 41.

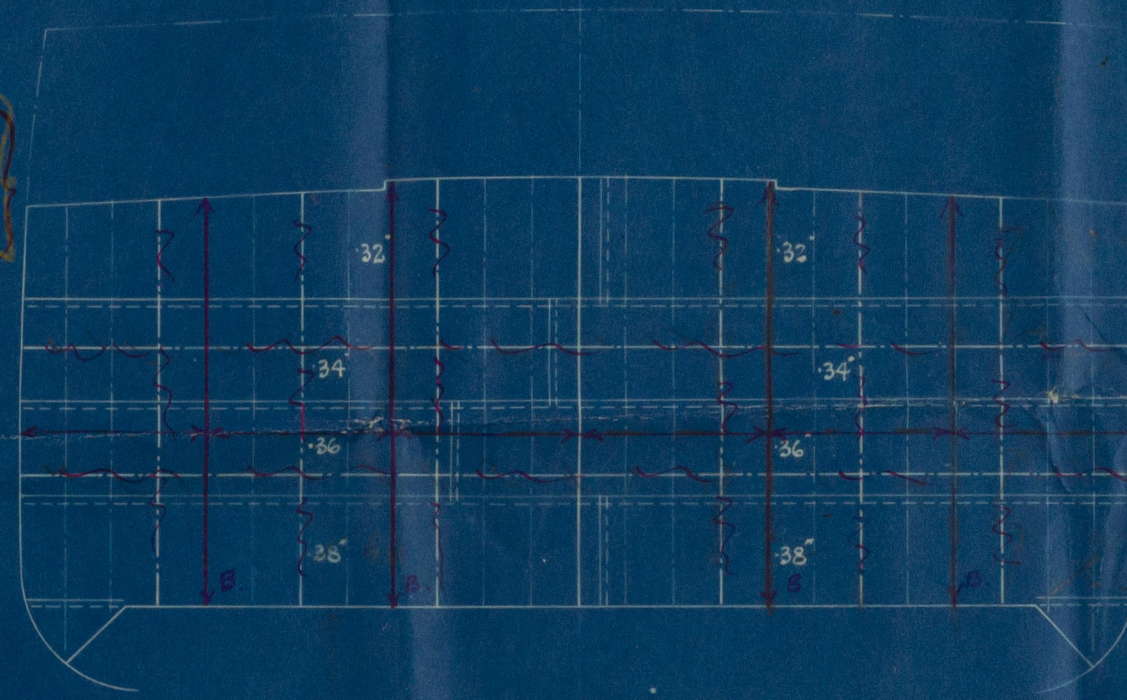
2 WEB FRAMES ON EACH SIDE OF $\frac{1}{2}$ DEPTH AT BOTTOM 30" x 36" THICK.
STIFFENERS 7" x 3" x 42" I. ABOUT 24" APART.
BRACKETS AT TOP AND BOTTOM 21" x 21" x 42"
2 HORIZONTAL GIRDERS OF FLANGED PLATE .32" THICK.
DEPTH 27" AND 25"

TRANSVERSE NUMBER $B + D = 51 - 9 + 29 - 3 = 81$
LONGITUDINAL NUMBER $B + D \times L = 81 \times 385 = 31185$



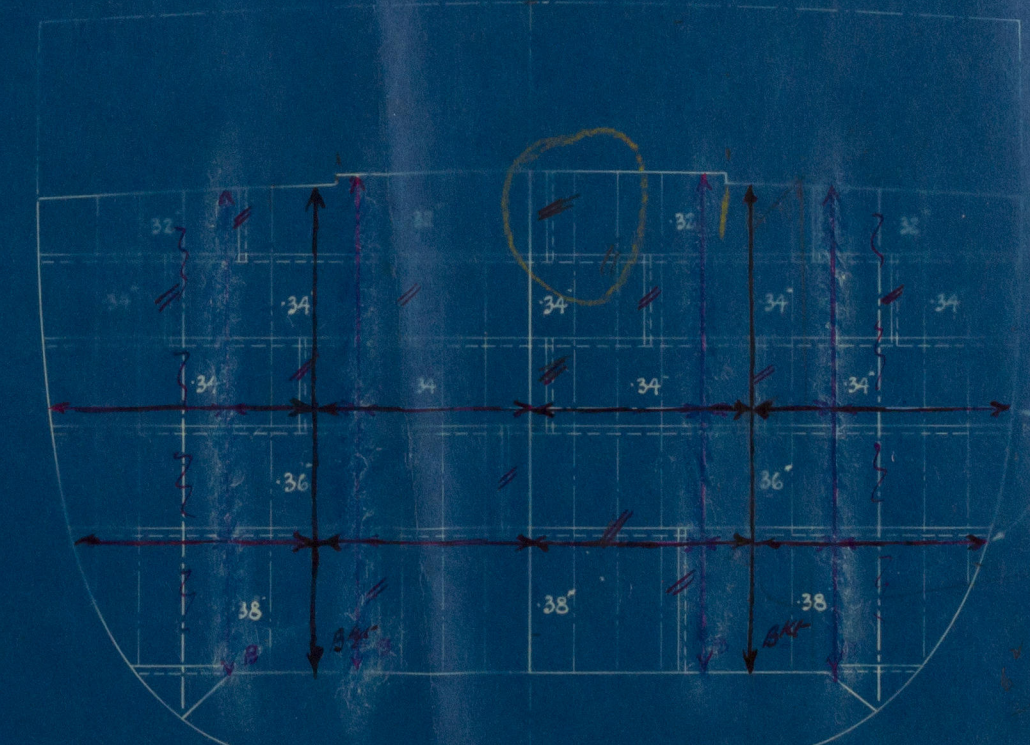
BULKHEAD FRAME 108.

2 WEB FRAMES ON EACH SIDE OF $\frac{1}{2}$ DEPTH AT BOTTOM 28" x 36" THICK.
STIFFENERS 6" x 3" x 42" I. ABOUT 26" APART.
BRACKETS 19" x 19" x 42" AT TOP AND BOTTOM.
2 HORIZONTAL GIRDERS OF FLANGED PLATE .32" THICK.
DEPTH 27" AND 25"



BULKHEAD FRAME 122.

2 WEB FRAMES ON EACH SIDE OF $\frac{1}{2}$ DEPTH AT BOTTOM 30" x 36" THICK.
STIFFENERS 6" x 3" x 42" I. ABOUT 26" APART.
BRACKETS 19" x 19" x 42" AT TOP AND BOTTOM.
2 HORIZONTAL GIRDERS OF FLANGED PLATE .32" THICK.
DEPTH 27" AND 25"



BULKHEAD FRAME 149.

2 WEB FRAMES ON EACH SIDE OF $\frac{1}{2}$ DEPTH AT BOTTOM 30" x 36" THICK.
STIFFENERS 6" x 3" x 42" I. ABOUT 26" APART.
BRACKETS 19" x 19" x 42" AT TOP AND BOTTOM.
2 HORIZONTAL GIRDERS OF FLANGED PLATE .32" THICK.
DEPTH 27" AND 25"

GIRDERS CONNECTED TO PRESENT STRINGERS
WITH BRACKETS AS USUAL
Top Stringer 6" x 6" reinforced as shown on profile
Web 2" x 2" x 42" at bottom

S/S MAUDIE
TRANSVERSE BULKHEADS
(WHALE OIL TANKS)
SCALE $\frac{3}{8}$ " = 1 FOOT.

A/S JARLSØ VERFT 1543-22



TR.J.

TRANSVERSE

BROS

003474-003478-0122

© 2020

Lloyd's Register
Foundation