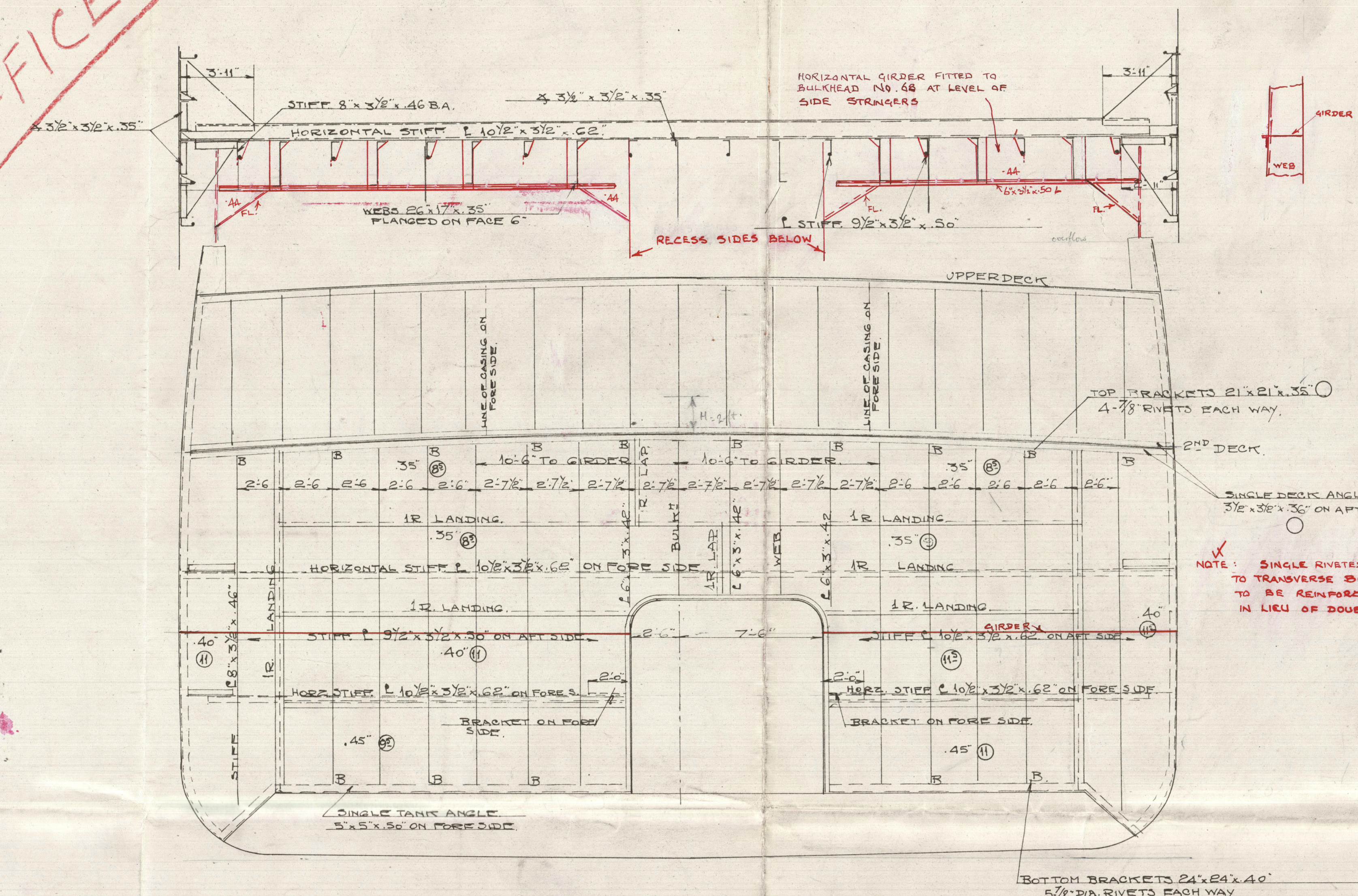
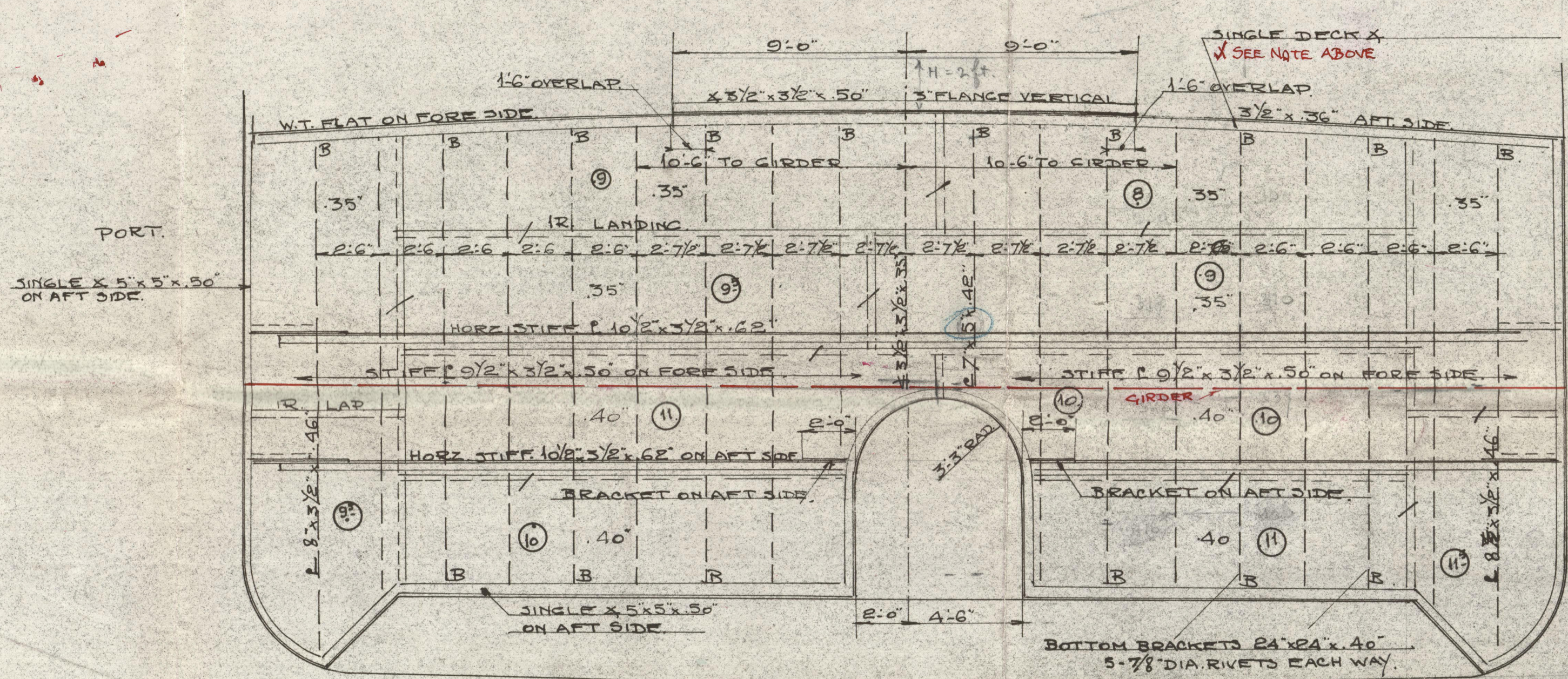
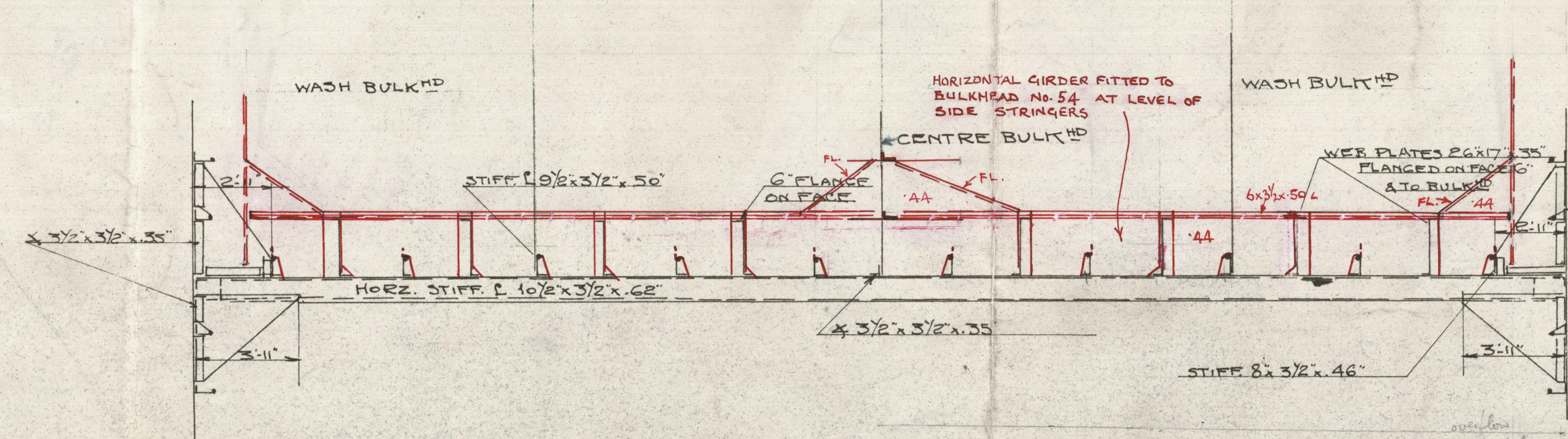


OFFICE

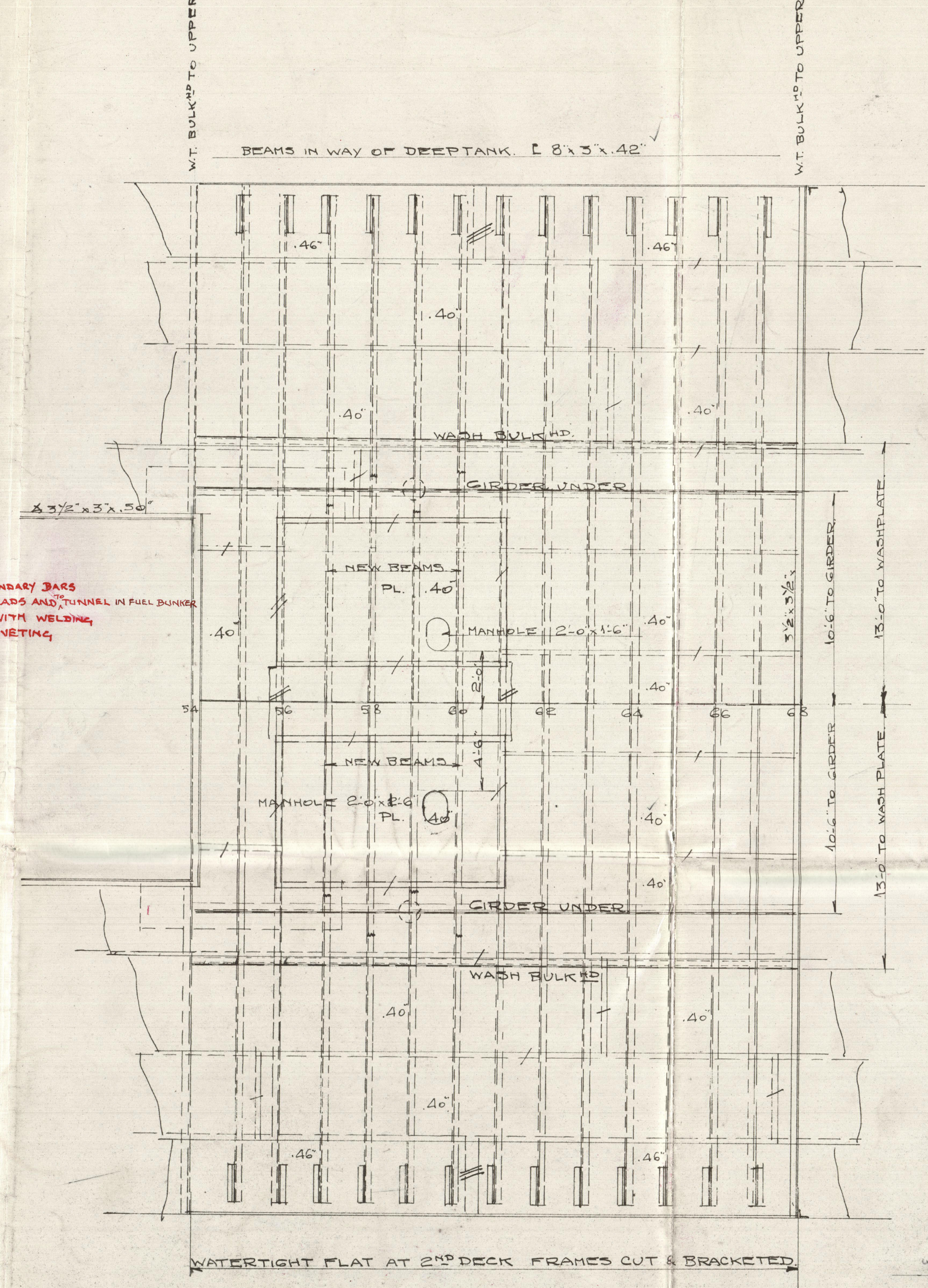


W.T. BULKHEAD ON FR. 68
LOOKING FORWARD.

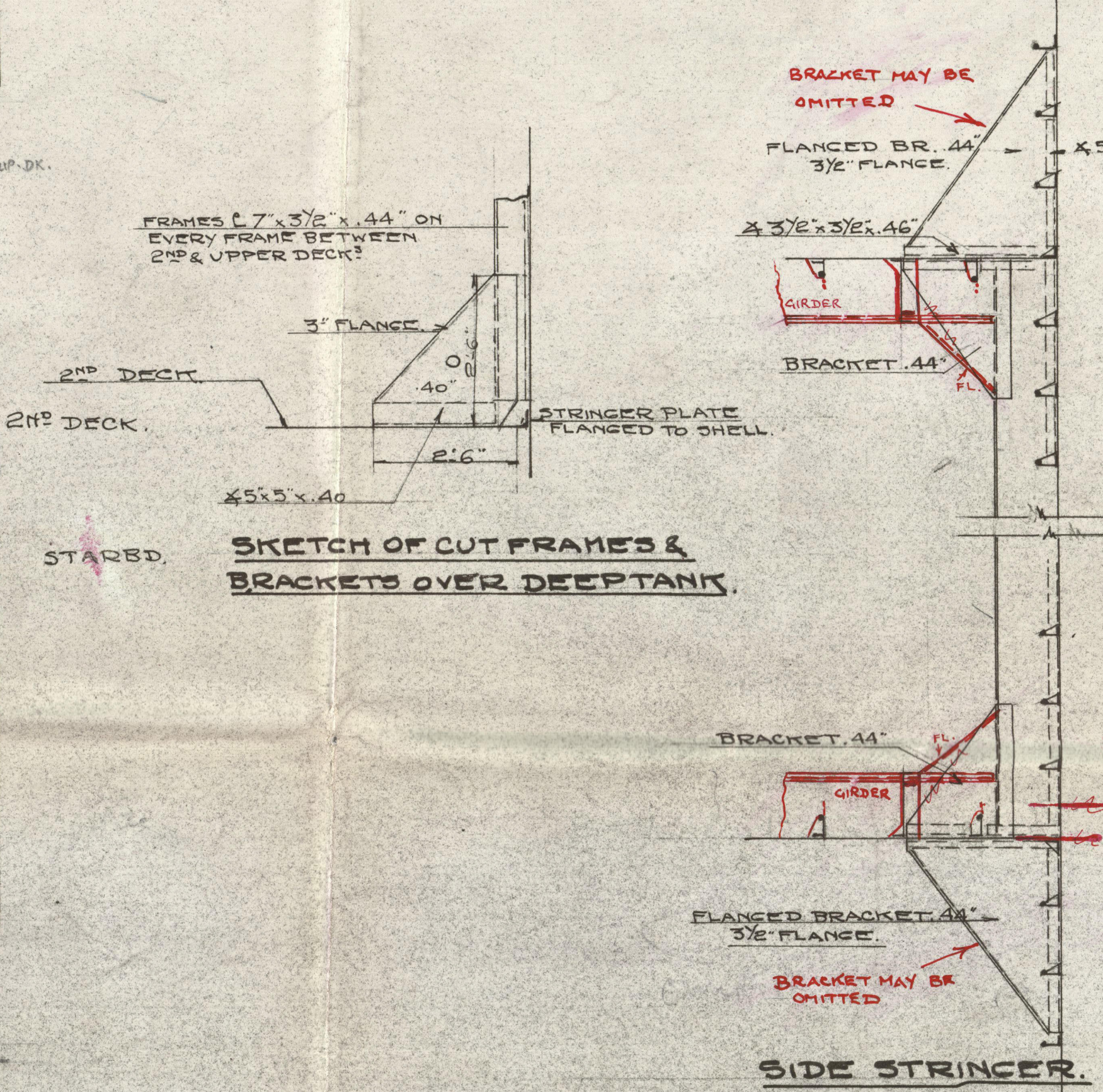


W.T. BULKHEAD ON FR 54

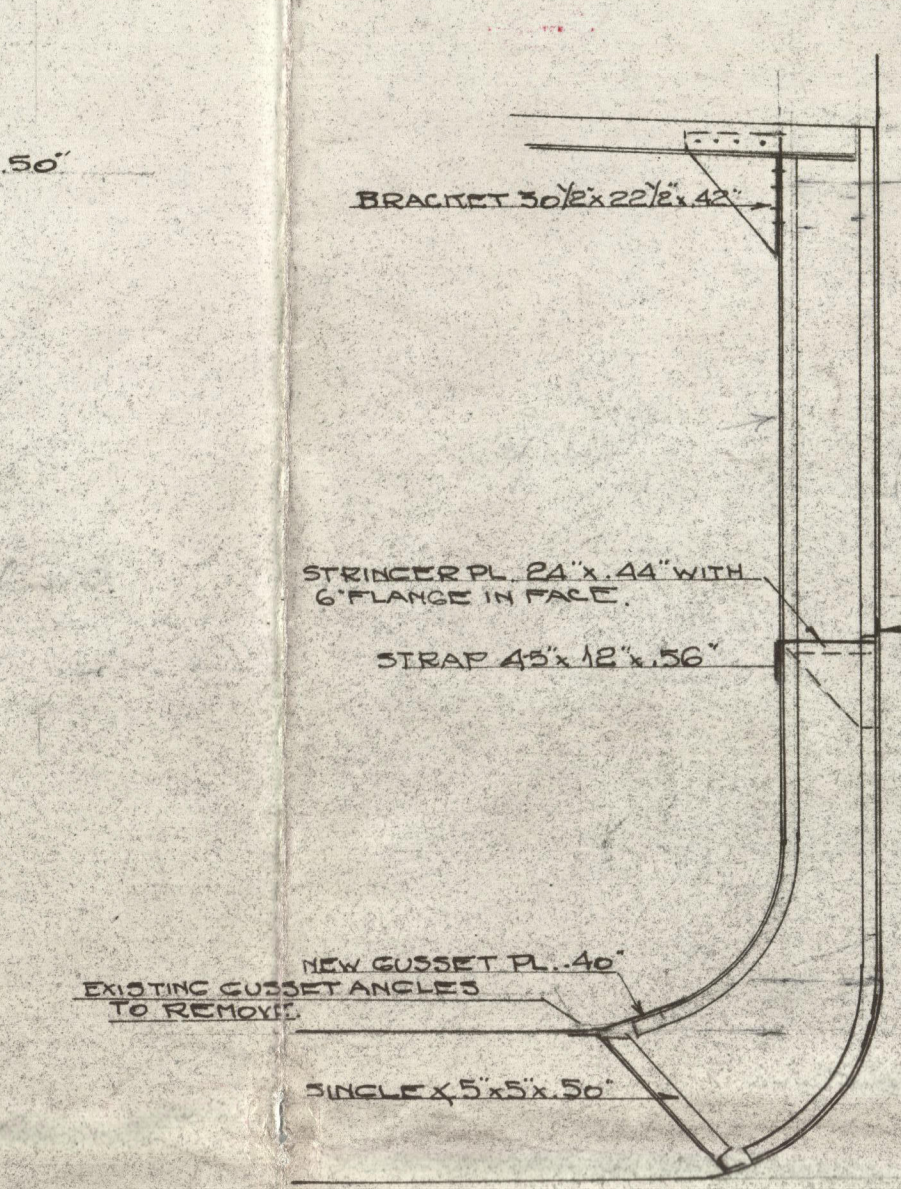
LOOKING FORWARD.



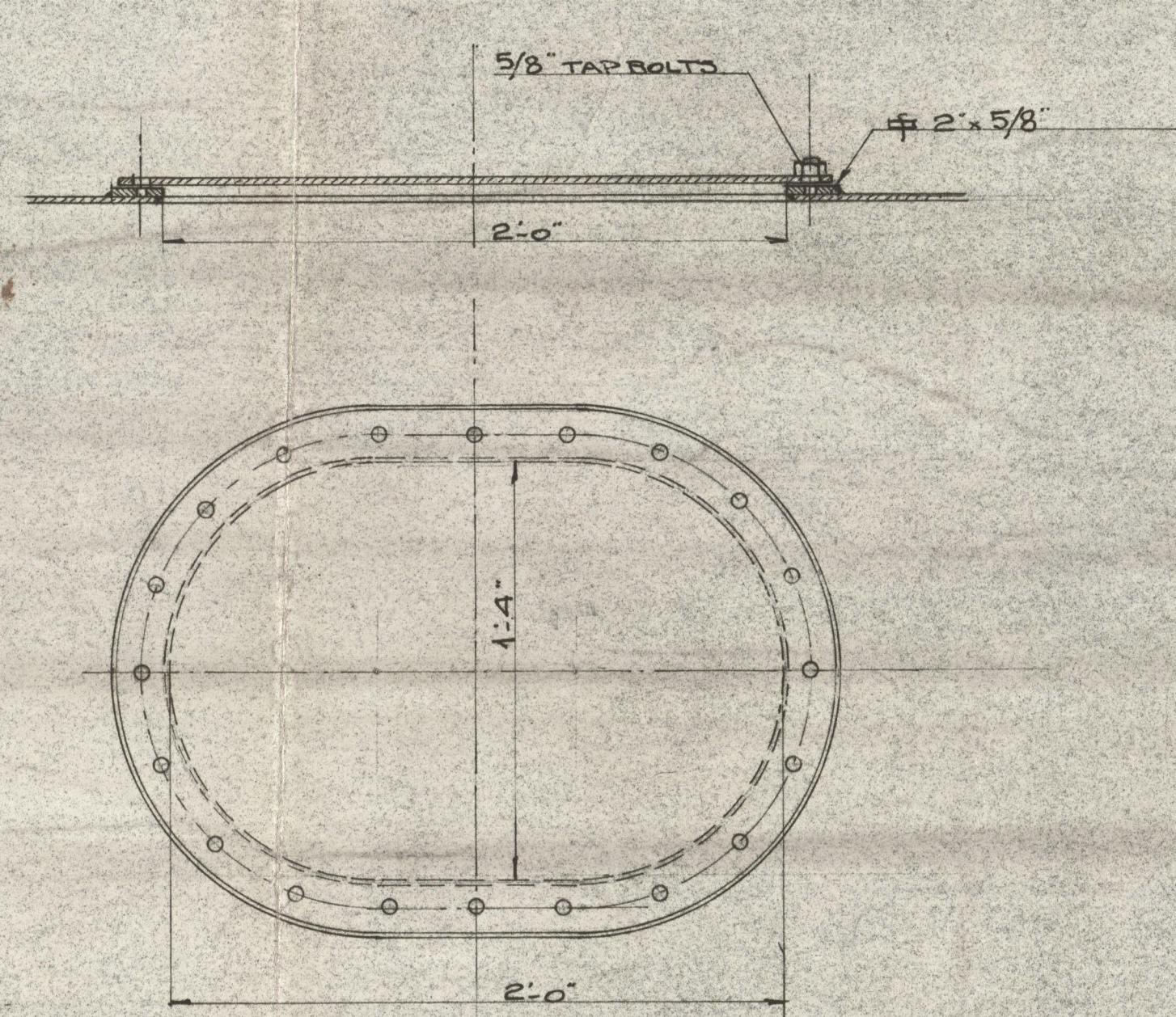
WATERTIGHT FLAT AT 2ND DECK FRAMES CUT & BRACKETED.



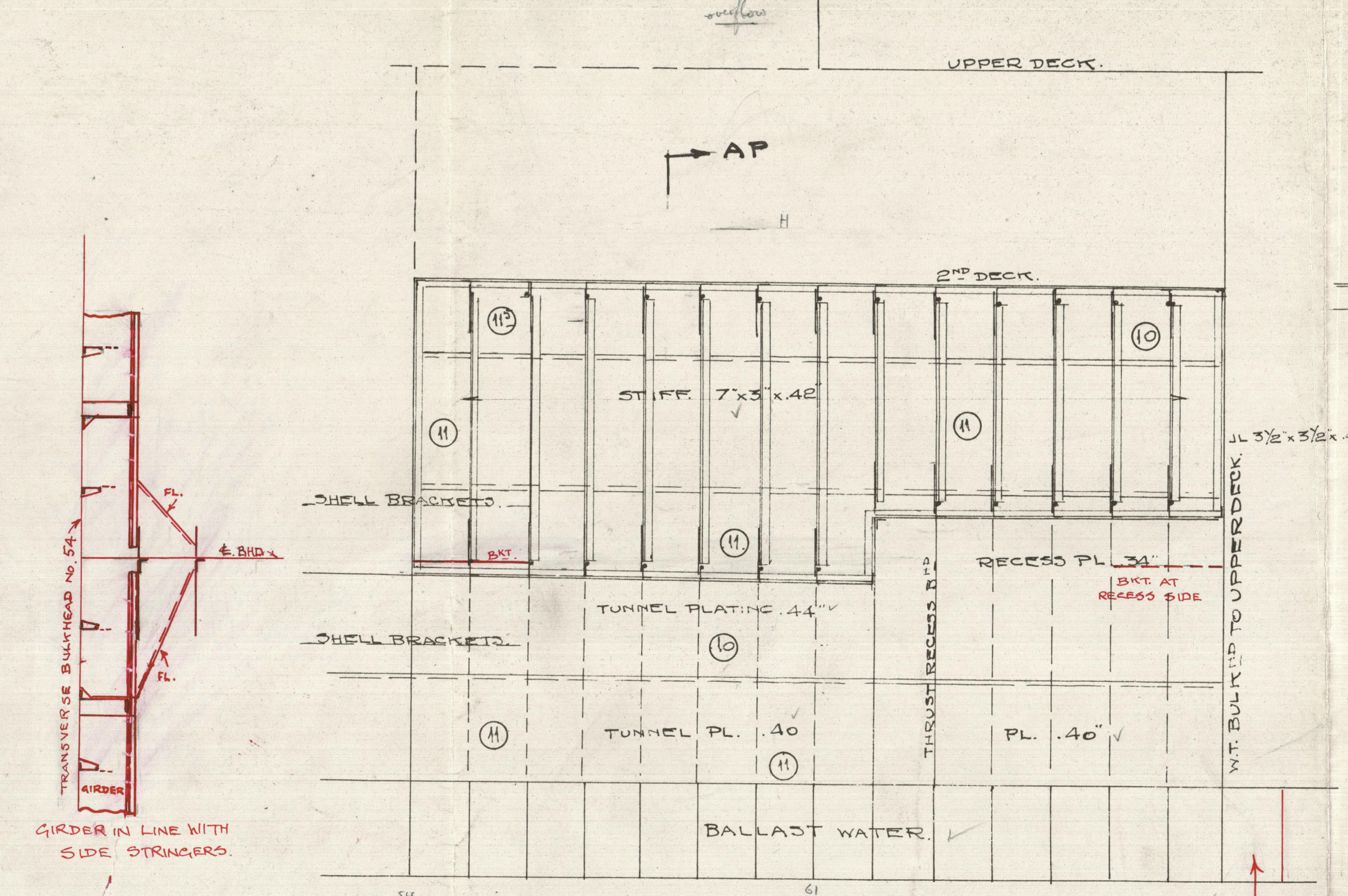
SKETCH OF CUT FRAMES &
BRACKETS OVER DEEPTANK.



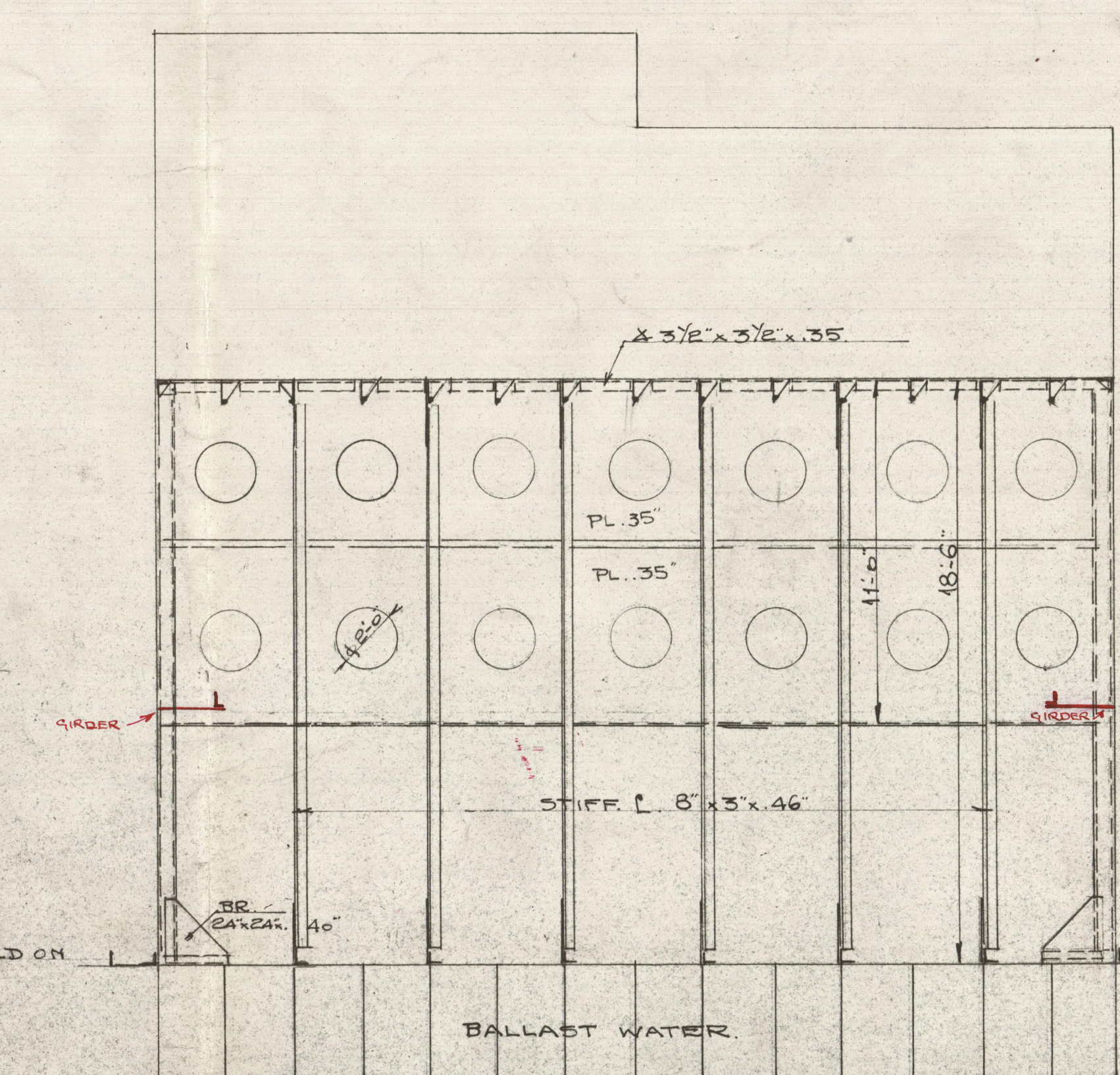
WEBFRAME ON N° 61.



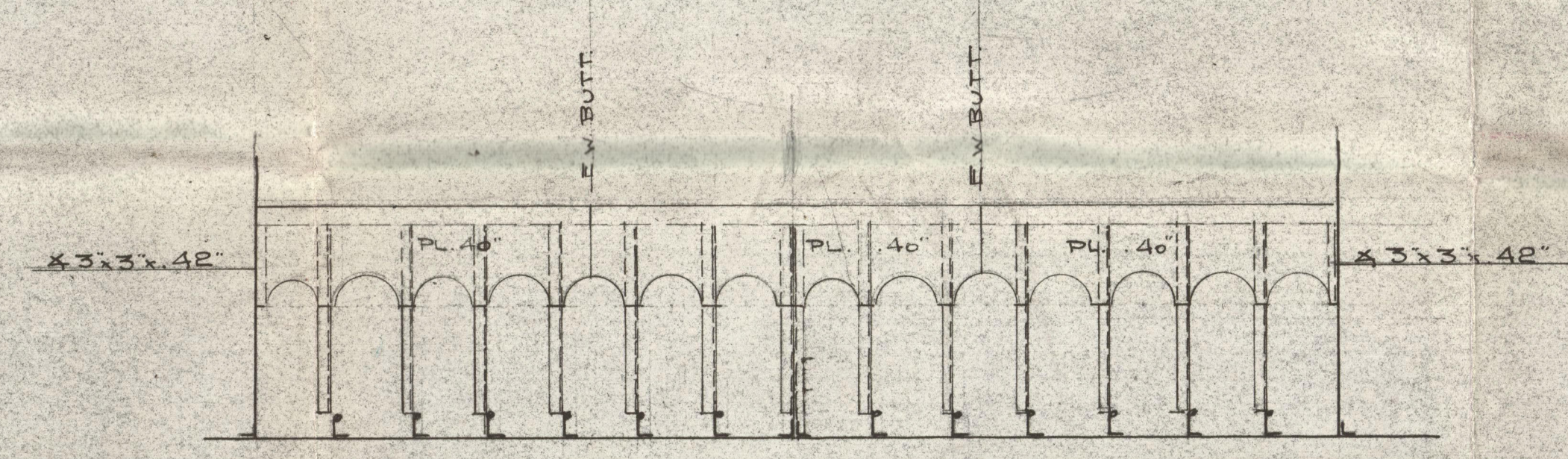
DETAIL OF MANHOLE COVERS.



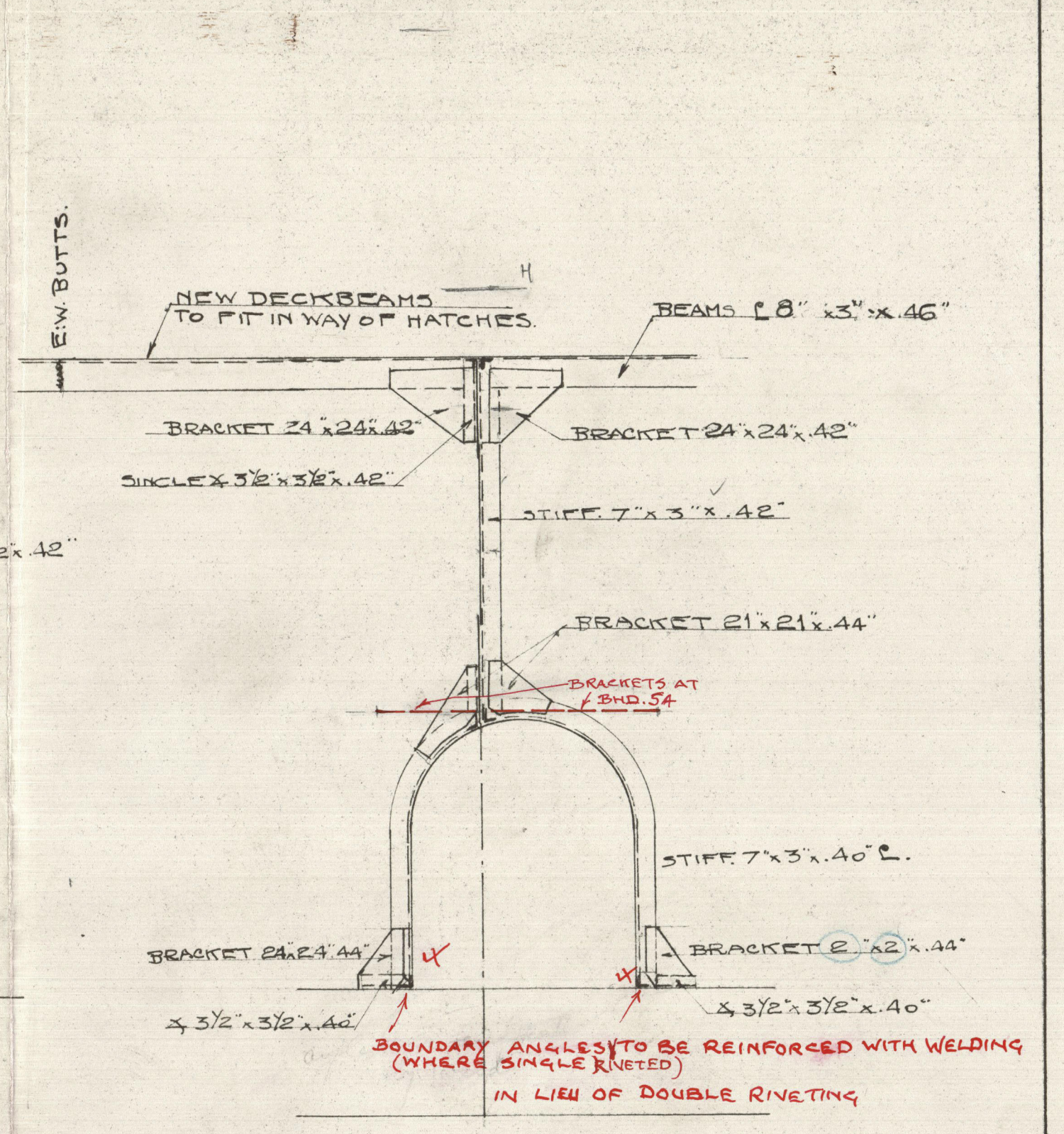
LONGITUDINAL & BULKHEAD.



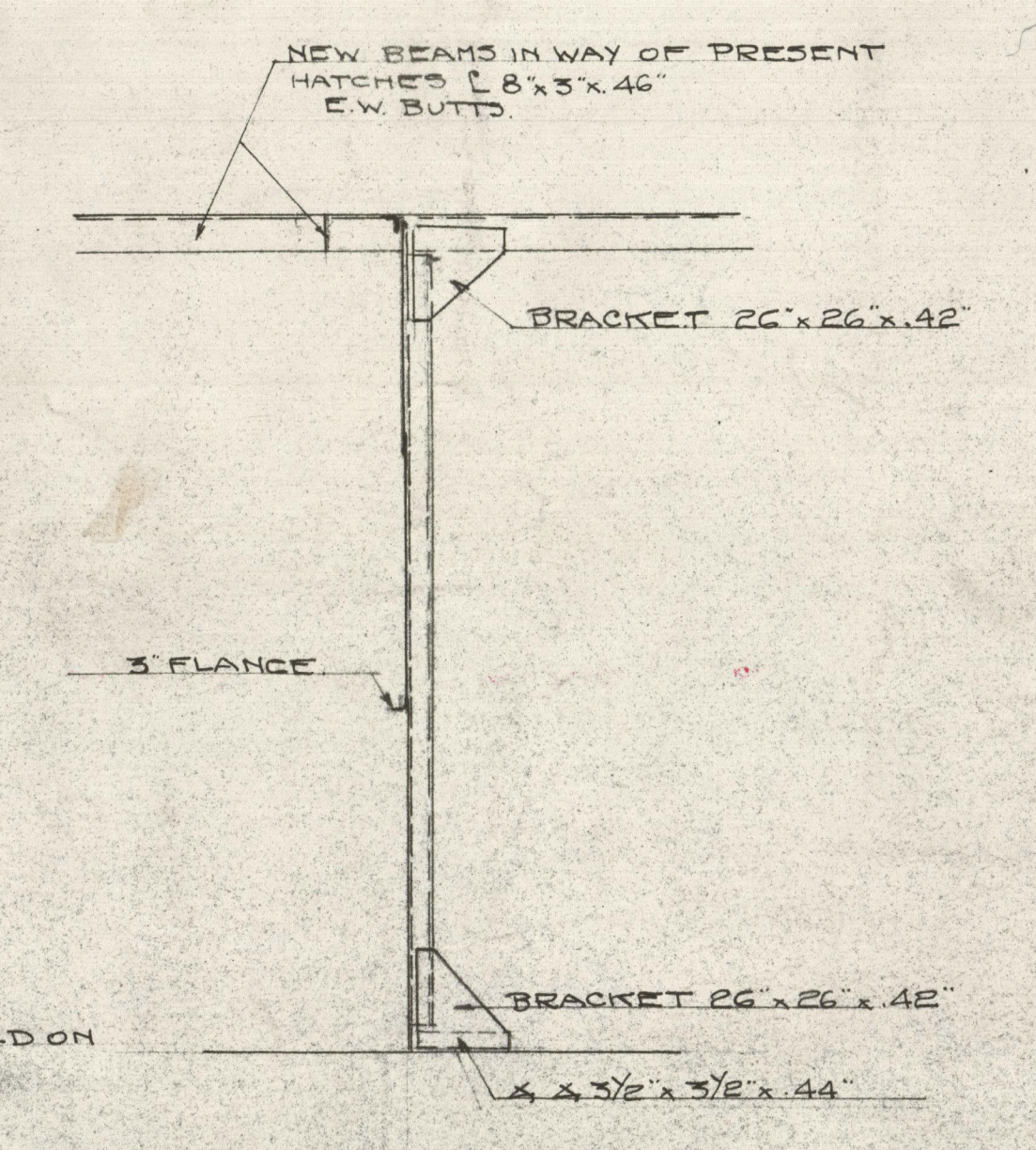
WASH BULKHEAD 13'-0 OUT OF CENTRE



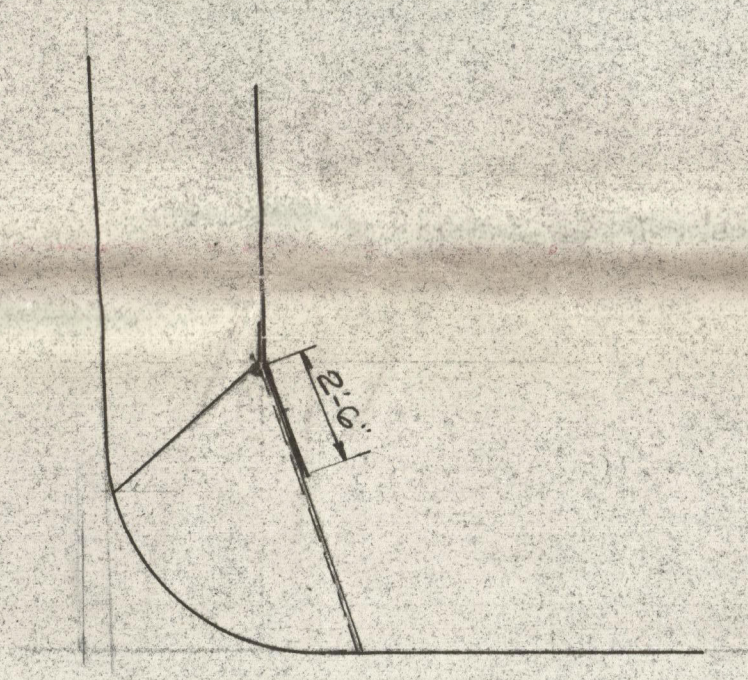
GUSSET PLATES.



SECTION A-B.



SECTION A-B.




SIDE VIEW OF GUSSET PLATES.

To accompany Antwerp Report NF 24851
5, 48

Al
5.3.48

TEST HOLES IN $\frac{M}{m}$.

S.S. MERCATOR..			VOLLE NO. 1050
DEEPTANK. (NOW FOR FUEL OIL)			SSN 1/4" 40"
BELLIARD, CRIGHTON & CO			Nº
ANTWERP			
GETEKEND	WAFZEN	GOEDKEURD	1222-11
<i>LB</i>			DATUM. 10-2-48
003474- 003478- 0125			Foundation

Miegester

Deep tank for fuel oil

Rev 24851



© 2020

Lloyd's Register
Foundation

003474-003478-0125