

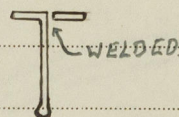
Lloyd's Register of Shipping.

Ship's Name PLAVNIKOfficial No. 86

Memorandum of alterations reported since ship was surveyed for assignment of Load Lines in accordance with Wokingham letter to New York dated March 12, 1943

(1) Two 6" x 3-1/2" x 1/2" bulb angle bar stays fitted to each side coaming of each cargo hatchway.

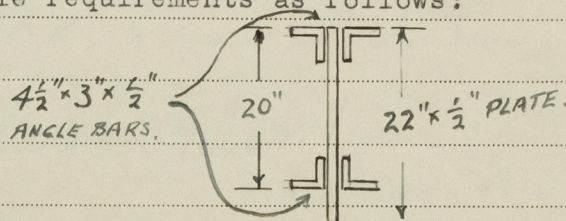
(2) One 8" x 3-1/2" x 3/8" bulb angle bar fore and after with 3" x 3/8" flat plate fitted to 5' x 9'3" bunker hatch on boat deck; see sketch



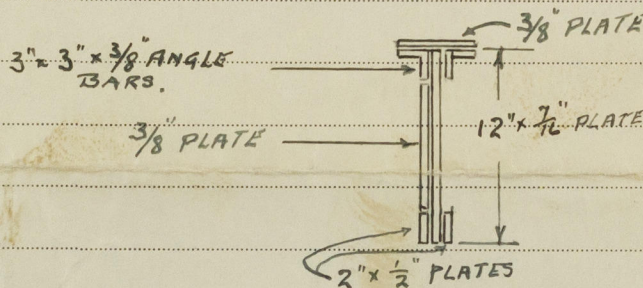
(3) Hatchway beams in Nos. 2 and 3 hatchways on freeboard deck and the fore and afters in Nos. 2 and 3 hatchways on the bridge deck and freeboard deck and No. 4 hatchway on the raised quarter deck found or made equivalent to Rule requirements as follows:

Nos. 2 and 3 hatchways on freeboard deck have 2

hatchways beams each spaced 9'6" as per sketch



Nos. 2 and 3 hatchways on the bridge deck and freeboard deck and No. 4 hatchway on the raised quarter deck have 3 fore and afters each spaced 5'-1-1/2" as per sketch



unsupported lengths are 8'9"

Noted
[Signature]
29 JUN 1943

[Signature]
SURVEYOR TO LLOYD'S REGISTER OF SHIPPING
NEW ORLEANS, LOUISIANA
April 24, 1943