

Lloyd's Register of Shipping.

20 JUL 1948

Ship's Name **S.S. " U E I C E "**

Official No. _____

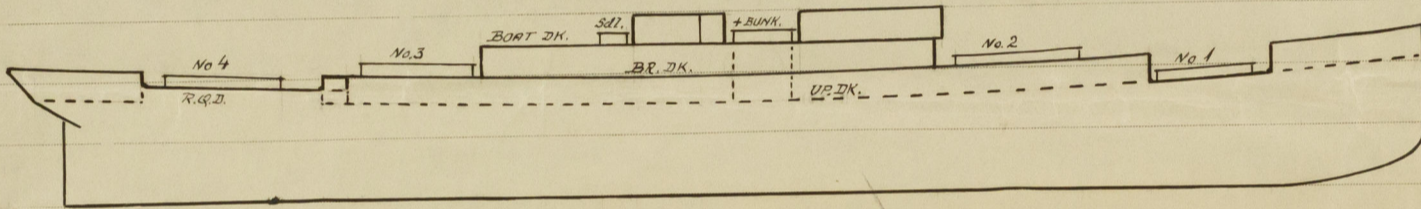
Memorandum of alterations reported since ship was surveyed for assignment of Load Lines
in _____

New arrangement of hatch shifting beams on exposed Upper, R.Q. and Boat Deck was
now carried out as per plan approved London 18/3/48. For particulars see below.

J. H. W.

Split, 14th July, 1948

Surveyor to Lloyd's Register.

J. H. W.
20 JUL 1948

HATCHWAYS ON FREEBOARD AND SUPERSTRUCTURE DECKS.

		No. 1	No. 2	+ BUNKER	COALING H.	No. 3	No. 4				
Description of Hatchway		UPPER DK.	BRIDGE DK.	BOAT DK.	BOAT DK.	BRIDGE DK.	R.Q. DK.				
Dimensions of Hatchway		7295x6100	8550x6100	3480x4013	1524x2794	8550x6100	8550x6100				
COAMINGS	Height above Deck	1000	890	762	912	870	860				
	Thickness	13	13	13	10	11	11				
	Sides	11	11	9	10	11	11				
	Stiffeners	ONE	ONE	—	—	ONE	ONE				
	Brackets, Stays	TWO	TWO	—	—	TWO	TWO				
HATCH BEAMS	Number	4	5	1	—	5	5				
	Spacing	1459	1425	1740	—	1425	1425				
	Scantling and Sketch	455x9	100x75x11	343x12	90x75x10	SAME AS Nos. 1+2					
	Bearing Surface	90	90	90	90	90	90				
FORE AND AFTERS	Number	/		2	1	/					
	Spacing			1338	1397						
	Unsupported Lengths			1740	1524						
	Scantling* and Sketch			75x75x9	75x75x9						
HATCH COVERS	Material	Wood	Wood	Wood	Wood	Wood	Wood				
	Thickness	75	75	75	75	75	75				
	How fitted	f+a	f+a	Thush.	Thush.	f+a	f+a				
	Bearing Surface	70	70	70	65	70	70				
Spacing of Cleats		560	560	580	600	560	560				
Number of Tarpaulins		2	2	2	2	2	2				

*Are wood fore and afters steel shod at all bearing surfaces? —

Are battens and wedges efficient and in good condition? YES

Are tarpaulins in good condition and in accordance with rule requirements? YES

Are lashings provided in accordance with rule requirements? YES

Ends of hatch covers protected by galvanised steel
bands efficiently secured.

© 2020