

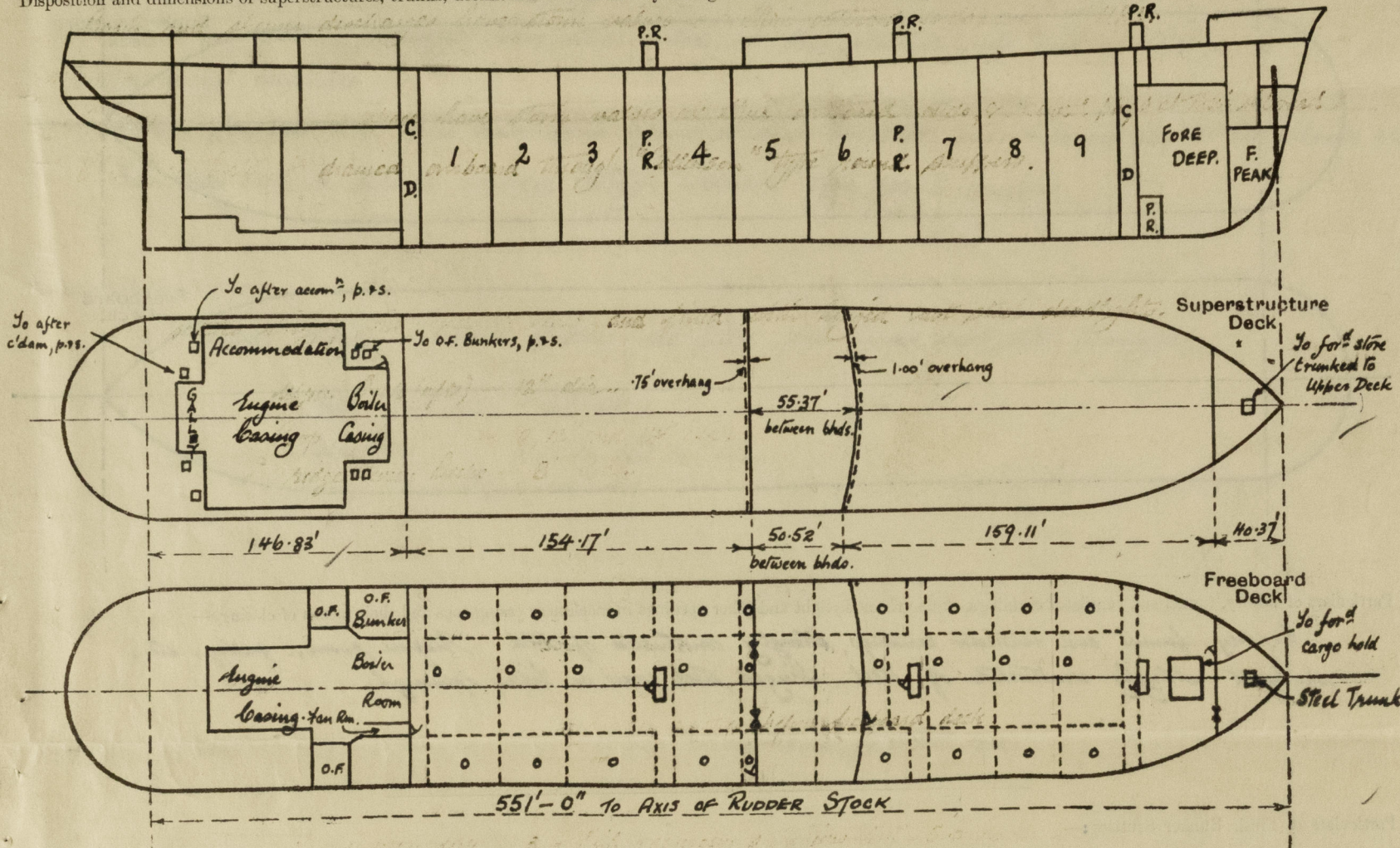
# Lloyd's Register of Shipping.

## SURVEYS FOR FREEBOARD.

(CONDITIONS OF ASSIGNMENT.)

Ship's Name **"HYALINA"** Port of Survey **NEWCASTLE-ON-TYNE**  
Official Number **181843** Surveyor's Signature *J. McCallum, W.T. Pope*  
Nationality and Port of Registry **British: London** Date of Survey **During Construction.**

Disposition and dimensions of superstructures, trunks, deckhouses and machinery casings to be inserted in the diagrams and tabular statement :-



Particulars of Superstructures, Trunks, Casings, Deckhouses.

	Coaming	Plating	Stiffeners	Spacing	End Attachments of Stiffeners	Size of Openings	Height of Sills	Height of Casings
Poop Bulkhead	.44	.44	T 9x4x.64 O.A. - Boiler Rm. 10x50 B.A. - in Wing	30"	Bld. at top. E.W. at bottom	1 at 3'0"x2'0"	2 1/2"	8'-0"
Raised Quarter Deck Bulkhead	-	-	-	-	-	-	-	-
Bridge, After Bulkhead	.30	.30	T 3x2 1/2 x 25 O.A.	28"-32"	Elec. welded top & bottom	2 at 5'1"x3'1" 1 at 5'0"x2'0"	18"	7'-6"
Bridge, Forward Bulkhead	.44	.44	12"x.42 B.P.	28"-33"	-do-	1 at 5'0"x2'0" 1 at 5'1"x4'1"	18"	7'-6"
Forecastle Bulkhead	.30	.30	T 3x2 1/2 x 25 O.A.	25"-30"	-do-	1 at 5'0"x2'6"	18"	7'-6"
Trunk, Aft	-	-	-	-	-	-	-	-
Trunk, Forward	-	-	-	-	-	-	-	-
Exposed Machinery Casings on Freeboard or Raised Quarter Deck	-	-	-	-	-	-	-	-
Exposed Machinery Casings on Superstructure Decks	.34 front .30 sides	.34 .30	T 8x3 1/2 x 44 O.A. T 6x3 x 40 O.A.	29" 32 1/2"	Bld. at top, attached to beams at bottom.	1 at 5'0"x2'0"	18"	12'-0"
Machinery Casings within Superstructures not fitted with Class I Closing Appliances	-	-	-	-	-	-	-	-
Pump Room Entrances.	.40, .34, .30	-	T 6x3 x 34 O.A.	24"-36"	Elec. welded top and bottom.	4'6"x2'3" (front) 4'6"x2'0"	18"	7'-6"

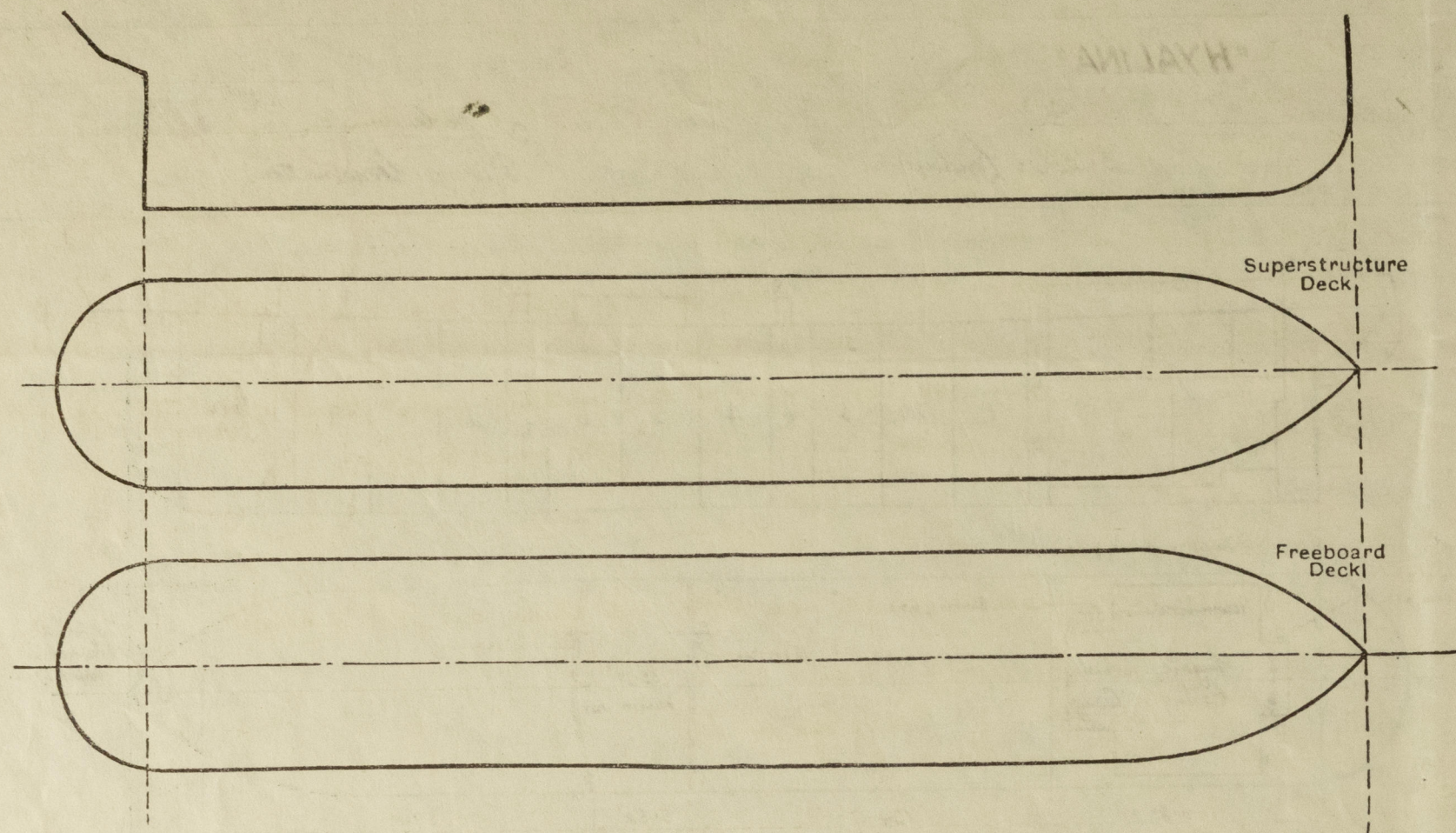
Particulars of Closing Appliances (state if capable of being manipulated from both sides).

Poop Bulkhead	One hinged steel W.T. door capable of being manipulated from both sides.
Raised Quarter Deck Bulkhead	-
Bridge, After Bulkhead	One hinged steel W.T. door capable of being manipulated from both sides. Two openings closed by portable plates with hook bolts not passing thro' bulkhead.
Bridge, Forward Bulkhead	One hinged steel W.T. door capable of being manipulated from both sides.
Forecastle Bulkhead	One hinged steel W.T. door capable of being manipulated from both sides. One opening closed by portable plate with hook bolts not passing through bulkhead.
Exposed Machinery Casings on Freeboard or Raised Quarter Deck	Do Poop Front.
Exposed Machinery Casings on Superstructure Decks	One hinged steel door capable of being manipulated from both sides. (Door fitted with handles all round and rubbered).
Machinery Casings within Superstructures not fitted with Class I Closing Appliances	Steel doors inside poop.
Pump Room Entrances.	Hinged steel W.T. doors capable of being manipulated from both sides.



# PARTICULARS OF PROTECTION TO OPENINGS, ETC.

The following diagrams should be used to indicate the positions of cargo and coaling hatchways, gangway, cargo and coaling ports, ventilators, companionways, etc., which would affect the seaworthiness of the ship:—



Particulars of fiddle, funnel and ventilator coamings, engine room skylight and other openings in machinery casing tops and their means of closing:—

Fiddle, funnel and ventilator coamings, strongly constructed of steel. Engine room, galley, etc., skylights strongly constructed of steel. Hinged steel covers on fiddle openings.

Particulars of Flush Bunker Scuttles:—

None.

Particulars of Companionways:—

Pump Room Entrances - strongly constructed steel houses with steel hinged W.T. doors capable of being manipulated from both sides.  
Poop entered from strongly constructed steel deckhouse on poop deck. Hardwood doors, 5'-0" x 2'-0", sills 18" above wood deck, capable of being manipulated from both sides.

Particulars of Ventilators in exposed positions on freeboard and superstructure decks:—

**Forecastle Deck**  
1 at 8" dia. 36" x 36" coaming.  
2 at 10" dia. 36" x 36" "  
2 at 12" dia. 36" x 36" "  
**Upper Deck**  
4 at 24" dia. Lower 9'-0" x 4'-0" } 20' high derrick posts, carried  
Remainder 25" }  
On top of Forward Pump Room  
1 at 15" dia., 36" x 36" coaming.

Two Upper Deck brackets 5'-0" below Upper deck.  
1 at 12" dia. 36" x 36" coaming.

**Bridge Deck**  
7 at 6" dia. 30" x 30" coaming.

**Poop Deck**  
3 at 6" dia. 36" x 30" coaming.  
1 at 6" dia. 33" x 30" coaming.

Particulars of Air Pipes in exposed positions on freeboard, raised quarter, or superstructure decks:—

**Forecastle Deck**  
4" to deep tanks, 19" high, mushroom top, p.s.s.  
4" to fore peak tank, 20" high, p.  
**Upper Deck**  
3" to fore c'dam 36" high, p.s.s.  
3" to aft c'dam 9'-2" high, p.s.s. { attached to poop front  
**Poop Deck**  
3" to No. 1 D.B. tank, 18" high, mushroom top, p.s.s.  
6" to F.W. tank, 18" high, p.s.s.  
6" to settling tank, 18" high, mushroom top, p.s.s.  
**Poop Deck (contd.)**  
3" to c'dam 18" high, p.s.s.  
3" to F.W. tanks, 18" high, p.s.s.  
3" " " 18" " p.s.s.  
3" " distilled water tank, 18" high, p.s.s.  
4" " aft peak tank, 18" high, p.s.s.  
3" " rudder tank, 18" high, p.s.s.  
2 1/2" " engine stern, 18" " , p.s.s.  
Air pipes marked or closed by hinged plates with butterfly nuts.  
Mushroom top air pipes fitted with gauge.  
All other air pipes closed by wood plugs and canvas covers.

Particulars of Gangway Cargo and Coaling Ports:—

None

Particulars of Scuppers and Sanitary Discharge Pipes:—

Forecastle and Bridge spaces drained on to Upper Deck through 1" dia. holes in after bulkhead fitted with screwed plugs.

W.C. discharges from Poop space have storm valves fitted at their outboard ends with positive means of closing from poop deck, and are fitted with indicators.

Basin and shower discharges have storm valves at their outboard ends and a N.R.V. in a position always accessible.

Scuppers from the Poop space have storm valves at their outboard ends, & screwed plugs at their inboard ends.

The Upper Deck is drained on board through "Collinson" type round scuppers.

Particulars of Side Scuttles:—

Side scuttles strongly constructed of brass and fitted with hinged cast steel deadlights.

Upper Deck (aft) - 12" dia..

Poop Deck - 10", 12" and 14" dia..

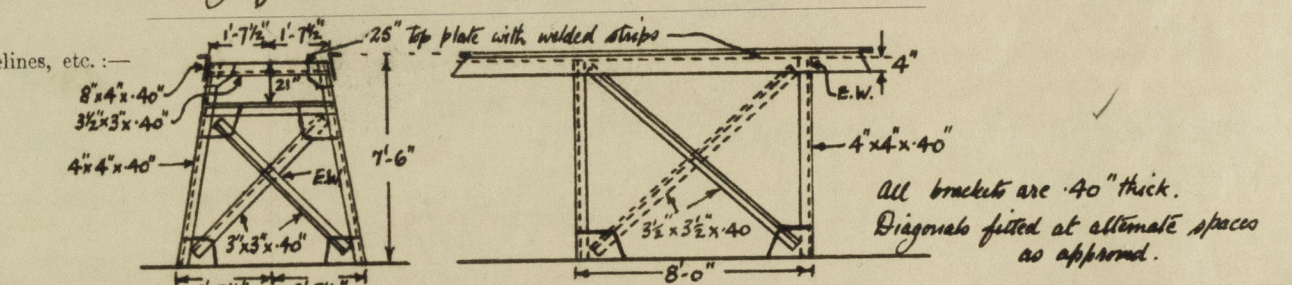
Bridge Deck - 8" dia..

Vertical distance of Sill of lowest Side Scuttle above top of keel No side scuttles below freeboard deck.

Particulars of Guard Rails:—

Round Upper Deck - 3'-6" high; generally standards 4'-9" - 5'-0" apart. 3 rails.  
" Poop Deck - 3'-9" " " " 4'-0" - 5'-0" " 3 rails.  
" Fore Deck - 3'-6" " " " 4'-6" - 5'-6" " 3 rails.  
" Bridge Deck - 3'-6" " " " 4'-0" - 4'-6" " 3 rails.  
" F.O.A. Gangway - 3'-2" " " " 5'-0" apart. 2 rails.

Particulars of Gangways, Lifelines, etc.:—



Particulars of Freeing Arrangements.

Particulars of Freeing Arrangements.						
	Length of Bulwark	Height of Bulwark	Size of Freeing Ports	Number each side	Area each side	Rule area each side
After Well ... ..	50% open rails. See sketch below.					
Forward Well ... ..						
State position of each freeing port ... ..	After Well:—					
(F. and A. position and height above deck edge)	Forward Well:—					
State whether the freeing ports are fitted with shutters, bars, or rails, and give particulars of such:—						
Additional area where sheer is less than standard.						

2-7 1/2"      2-7 1/2"

9" overhang

12" overhang

15'4"-2" between bulkheads.

15'9"-1 1/2" between bulkheads.

17" x 11" freeing pipes.

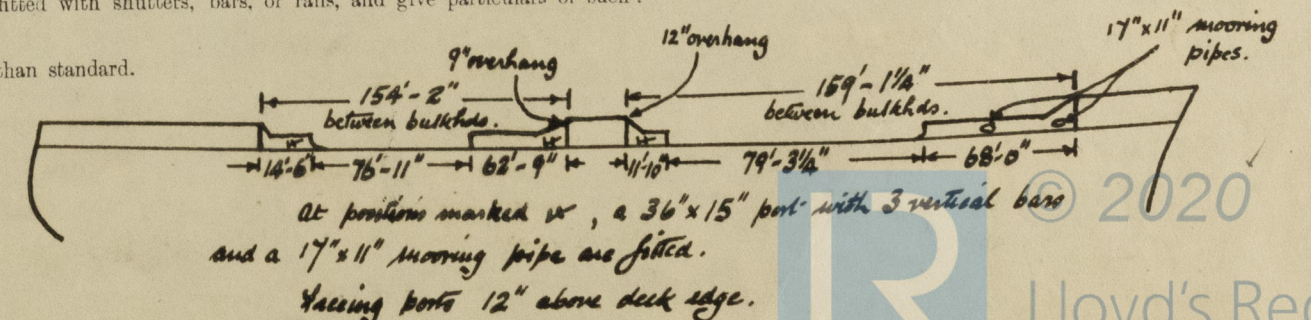
14'6" 7'6"-11" 6'3"-9" 11'10" 7'9"-3 1/4" 6'8"-0"

at positions marked 'x', a 36" x 15" port with 3 vertical bars and a 17" x 11" freeing pipe are fitted.

freeing ports 12" above deck edge.

© 2020

Lloyd's Reg





## PARTICULARS OF PROTECTION TO OPENINGS, ETC.

HATCHWAYS ON FREEBOARD AND SUPERSTRUCTURE DECKS.										
UPPER DECK										
File Draw Poop Deck										
Description of Hatchway ... ..			batten & wing S.F. lanks.	To fore hold	To copperdams	To fore & after copperdams	To aft copperdams	To after accommodation bunkers	To O.P.	Hatchway to Rope Store
Dimensions of Hatchway ... ..			4'-0" diam. (circular)	8'-0" x 8'-0"	23' x 18"	30' x 30"	28' x 28"	30' x 30"	24' x 18"	15' diam. (circular)
COAMINGS	{	Height above Deck ... ..	10"	30"	7' x 3 1/2' x .46"	9' x 8 1/2' x .50"	4' x .46"	6 1/2"	7' x 3 1/2' x .50"	8' x .38"
		Thickness { Sides ... ..	.75"	.44"	inverted angle.	B.A.	above wood deck.	above wood deck.	inverted angle	Bull Plate.
		Stiffeners ... ..	-	-	-	-	(7" inverted angle on steel deck)	(9' x 3 1/2' x .50" B.A.)	-	-
		Brackets, Stays ... ..	-	-	-	-	-	-	-	-
HATCH BEAMS	{	Number ... ..	none	none	none	none	none	none	none	none
		Spacing ... ..								
		Scantling and Sketch ... ..								
		Bearing Surface ... ..								
FORE AND AFTERS	{	Number ... ..	none	none	none	none	none	none	none	none
		Spacing ... ..								
		Unsupported Lengths ... ..								
		Scantling* and Sketch ... ..								
Bearing Surface ... ..										
HATCH COVERS	{	Material ... ..	Steel	Steel	Steel	Steel	Bolted	Steel W.T.	Bolted	Steel
		Thickness ... ..	.42"	.40" W.T. covers	.50"	W.T.	Steel W.T.	covers, .40"	Steel O.T.	hinged W.T.
		How fitted ... ..	O.T. covers	available	bolted	Covers, .40"	covers, .40"	thick, Yoggled	covers, .40"	cover, .38"
		Bearing Surface ... ..	Toggles 20" apart.	with bolted W.T. members 36" x 30" on top	W.T. covers	Toggles 16" apart.	Thick, 16" apart.	thick, 16" apart.	thick, 16" apart.	Strong back
Spacing of Cleats ... ..			-	Toggles 19" apart.	Bols spaced 14" apart.	-	Bolts spaced 4" apart.	-	Bols spaced with 6" fly 4" apart, on underside	-
Number of Tarpaulins ... ..			-	-	-	-	-	-	-	-
*Are wood fore and afters steel shod at all bearing surfaces? -										
Are battens and wedges efficient and in good condition? -										
Are tarpaulins in good condition and in accordance with rule requirements? -										
Are lashings provided in accordance with rule requirements? -										

Particulars of any special features :—

Endorsement at first survey and at surveys for renewal of Certificate :—

The fittings and appliances are in accordance with the particulars shown on this form (or as now modified) and are in good condition.

© 2020

Lloyd's Register  
Foundation