

18.5.36

№. 1525

RUDDER & STERN FRAME

SCALE $\frac{1}{2}" = 1'1"$

STERN FRAME-UPPER PORTION CAST STEEL, LOWER PORTION, FORGED STEEL

RUDDER MAIN PIECE, FORGED STEEL

ALL TO PASS LLOYD'S TESTS & 100 A1 & BOARD OF TRADE TESTS FOR PASSENGER VESSELS

AREA OF RUDDER AHEAD 4 OF STOCK = 123.2 SQ FT

AREA OF RUDDER AHEAD 4 OF STOCK = 38.8

AREA OF RUDDER AHEAD 4 OF STOCK = 123.2 x 3.52 = 433

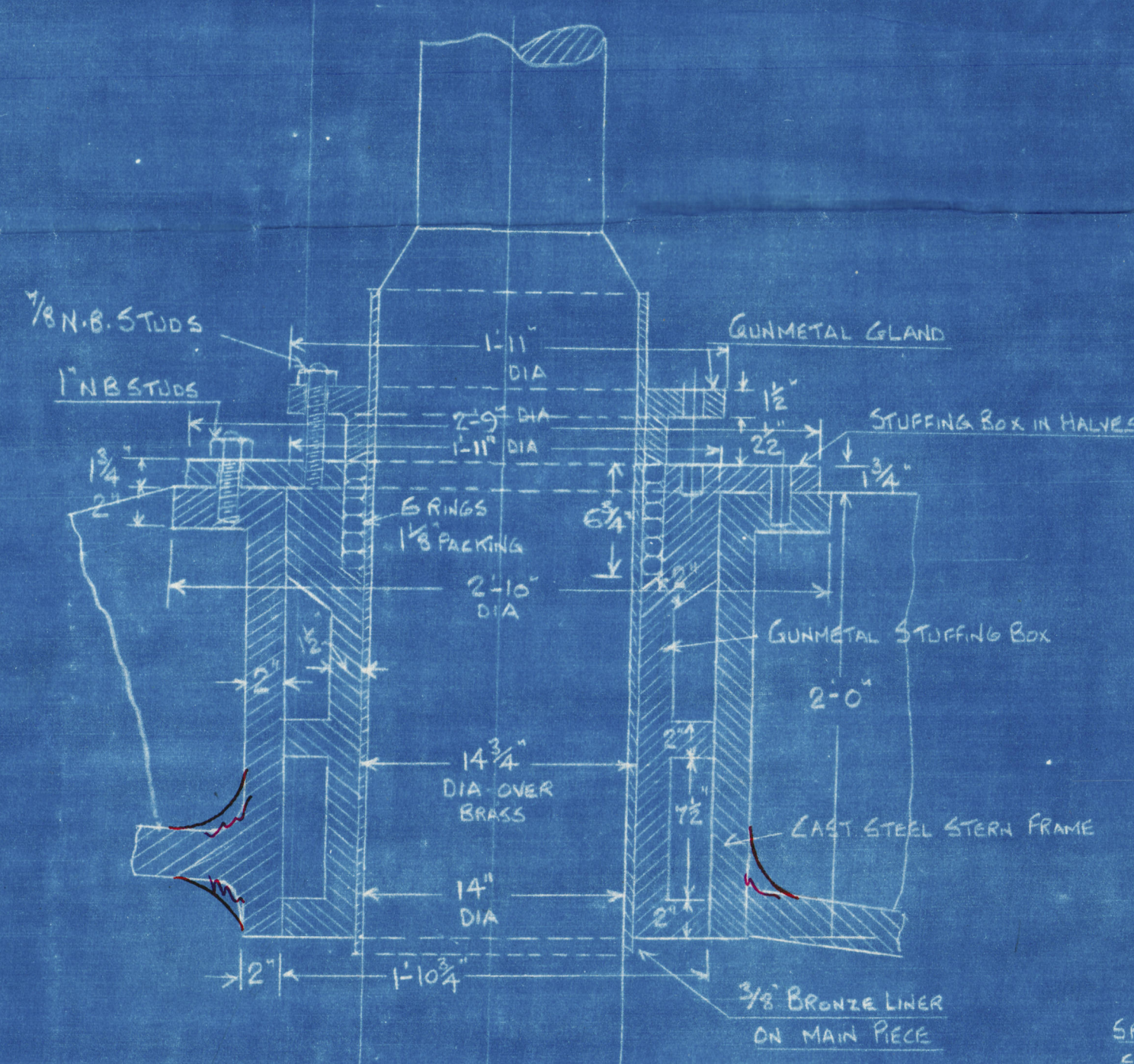
AREA OF RUDDER AHEAD 4 OF STOCK = 38.8 x 1.048 = 38

AREA OF RUDDER AHEAD 4 OF STOCK = 123.2 x 3.52 = 433

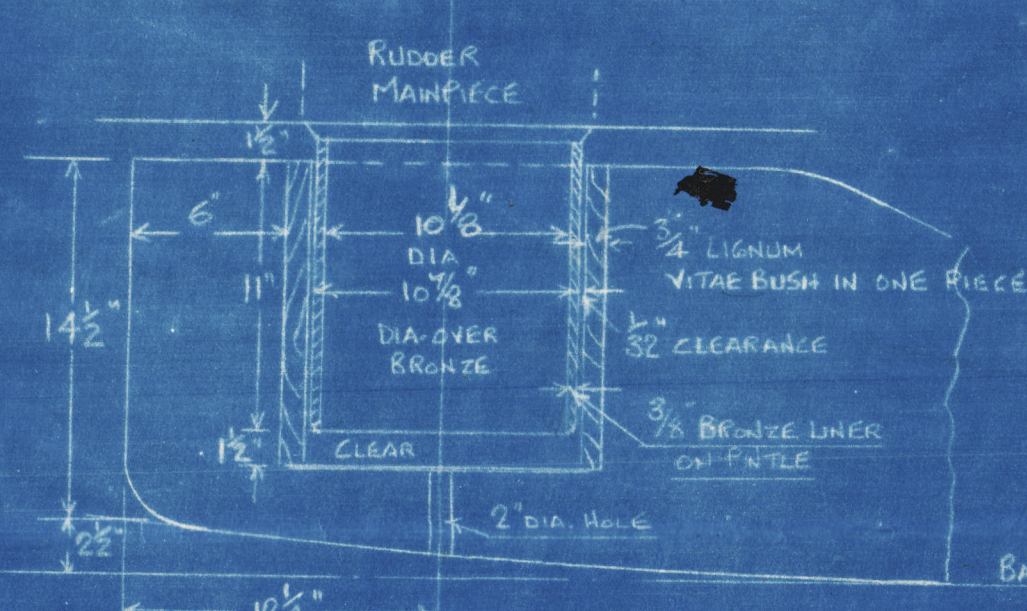
AREA OF RUDDER AHEAD 4 OF STOCK = 38.8 x 1.048 = 38

SPEED 14½ KNOTS

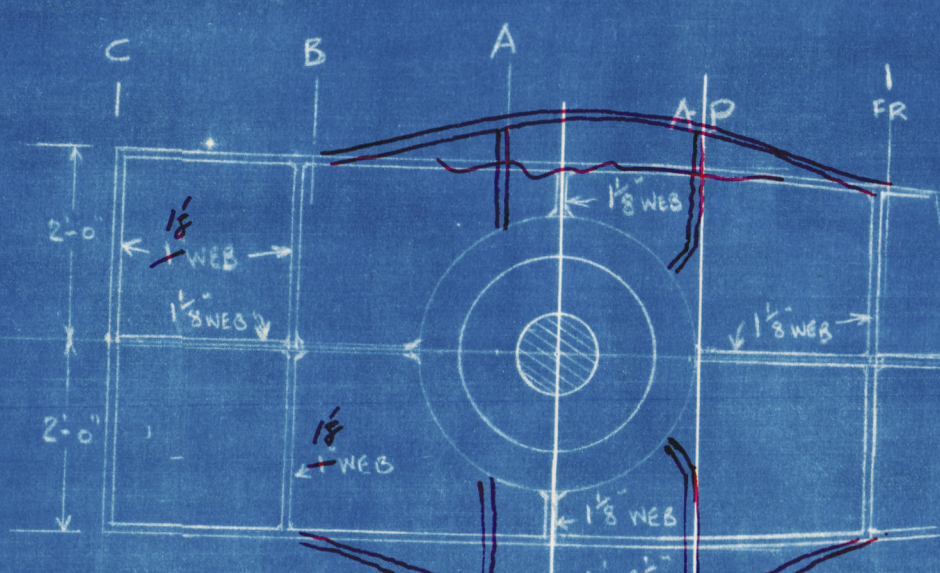
LLOYD'S DIA. OF STOCK = 10½



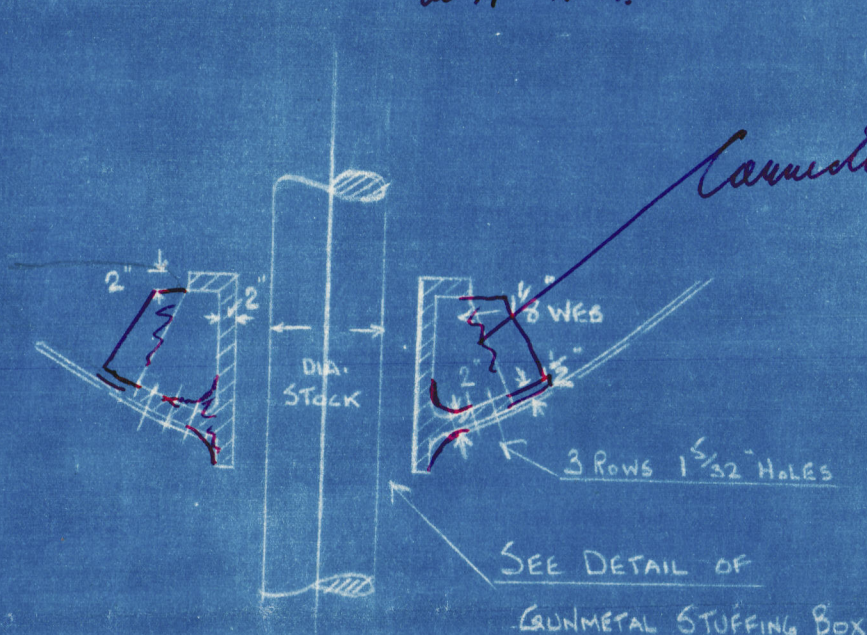
DETAIL OF STUFFING-BOX & GLAND
OF GUNMETAL TO BE SUPPLIED
BY STERN-FRAME MAKERS
SCALE $\frac{1}{2}" = 1'1"$



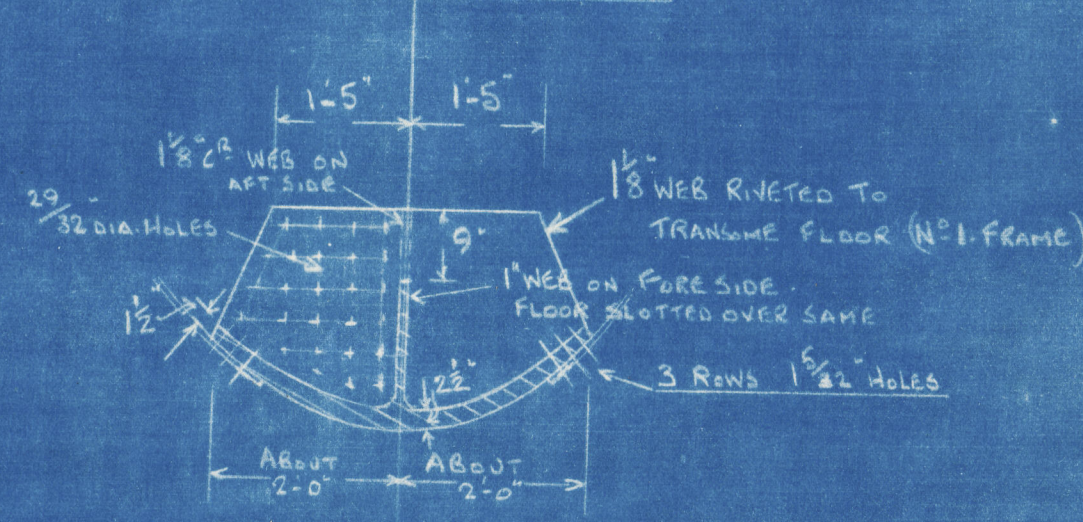
DETAIL OF BOTTOM BEARING
SCALE $\frac{1}{2}" = 1'1"$



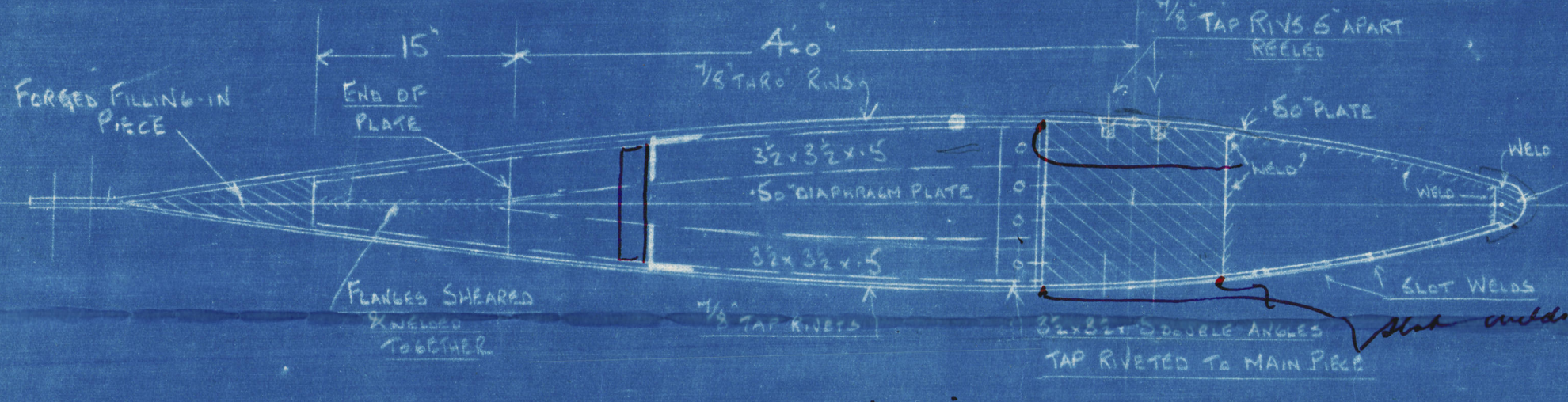
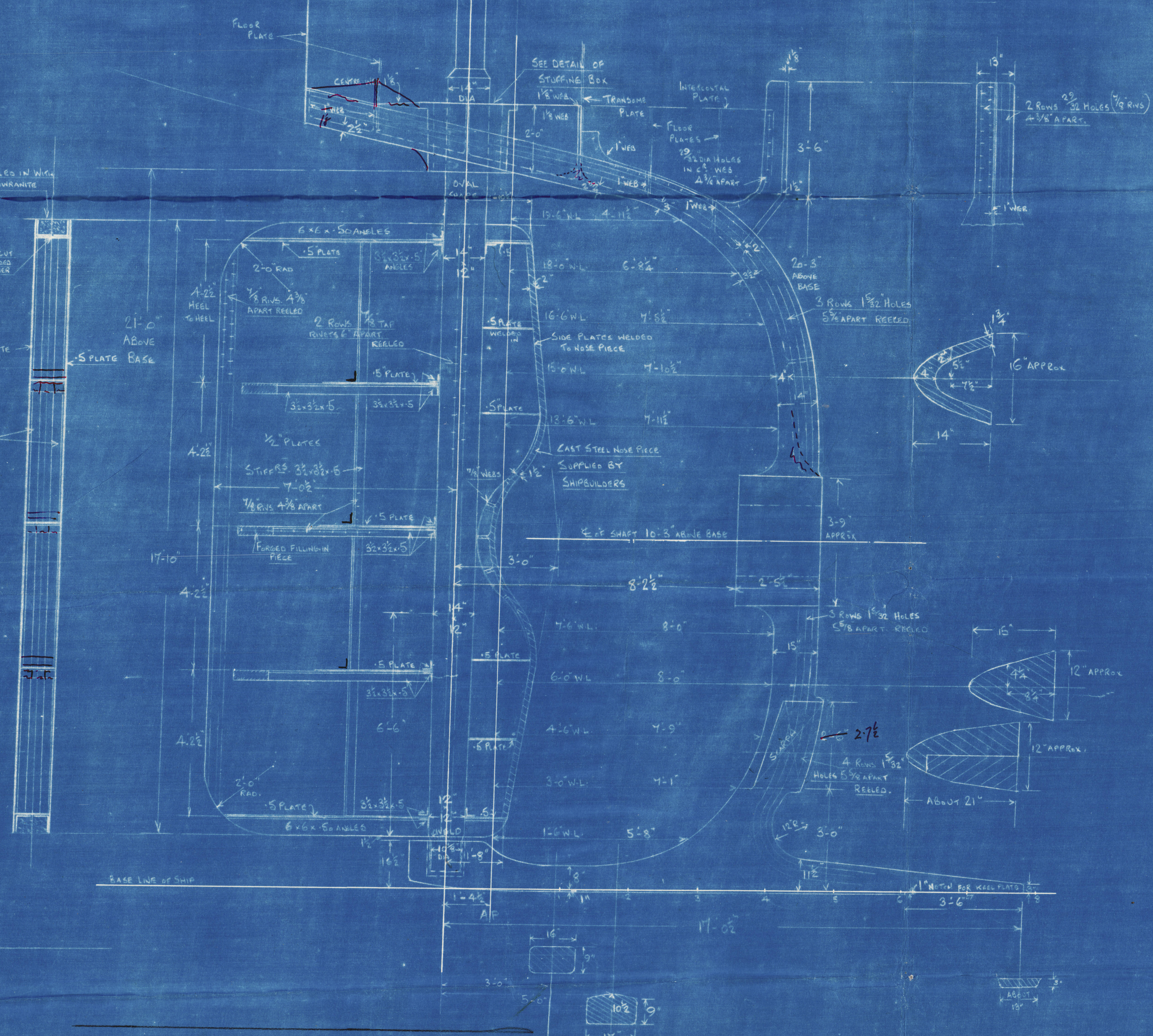
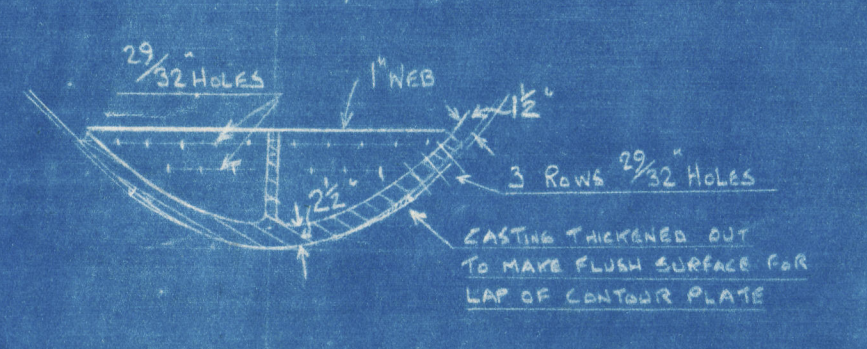
SECTION THROUGH CENTRE
OF STOCK & A.P.



SECTION AT NO. 1 FRAME



SECTION AT C. FRAME
(END OF CASTING)



all top rivets welded on
to prevent working loose

WALLSEND SHIPBUILDING & ENGINEERING CO. LTD.
WALLSEND-ON-TYNE
18.5.36

WALLSEND SHIPBUILDING & ENGINEERING CO. LTD.
WALLSEND-ON-TYNE
18.5.36

(4)

Swan Hunters No 1525

Rudder & Stern frame

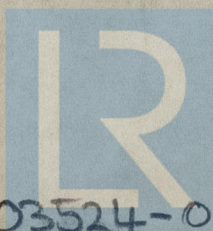
"Empire Chivalry"

ex.

S.S. Inkosi

NEWCASTLE ON TYNE.

Report No. 95130.



© 2020

Lloyd's Register
Foundation

003513-003524-0188