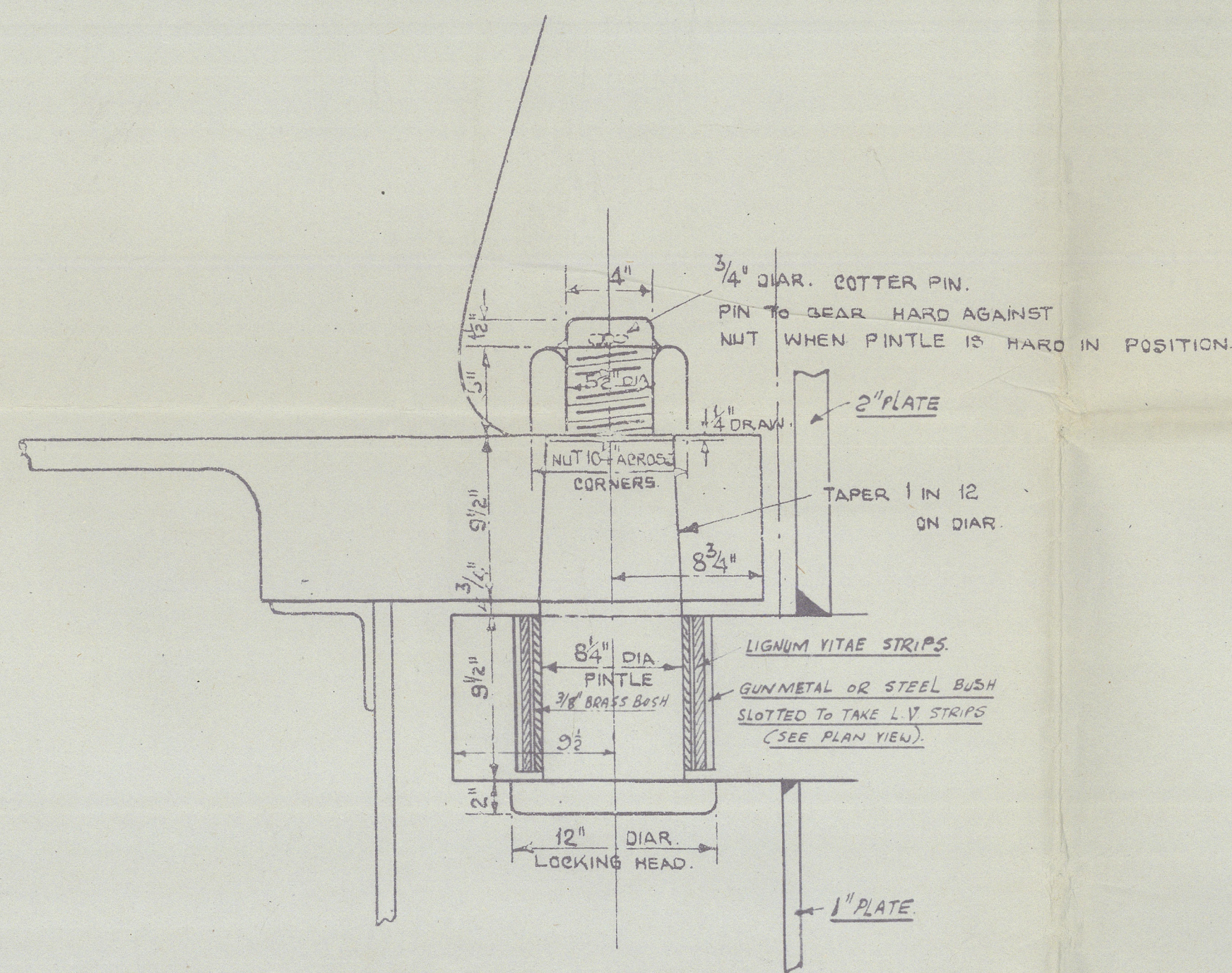


12 APR 1944

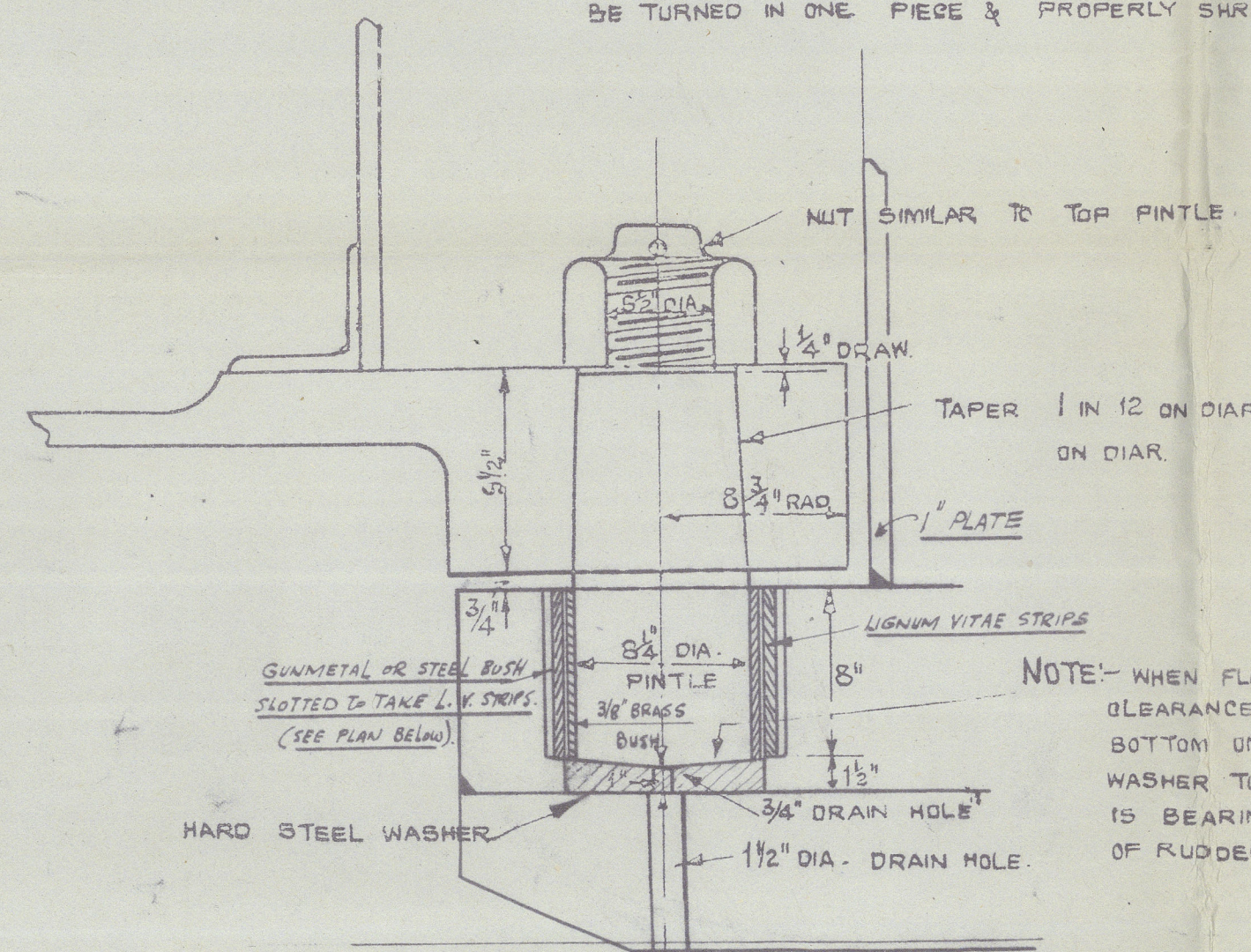
## RUDDER PLAN.

SCALE :-  $\frac{3}{4}" = 1 \text{ FOOT.}$

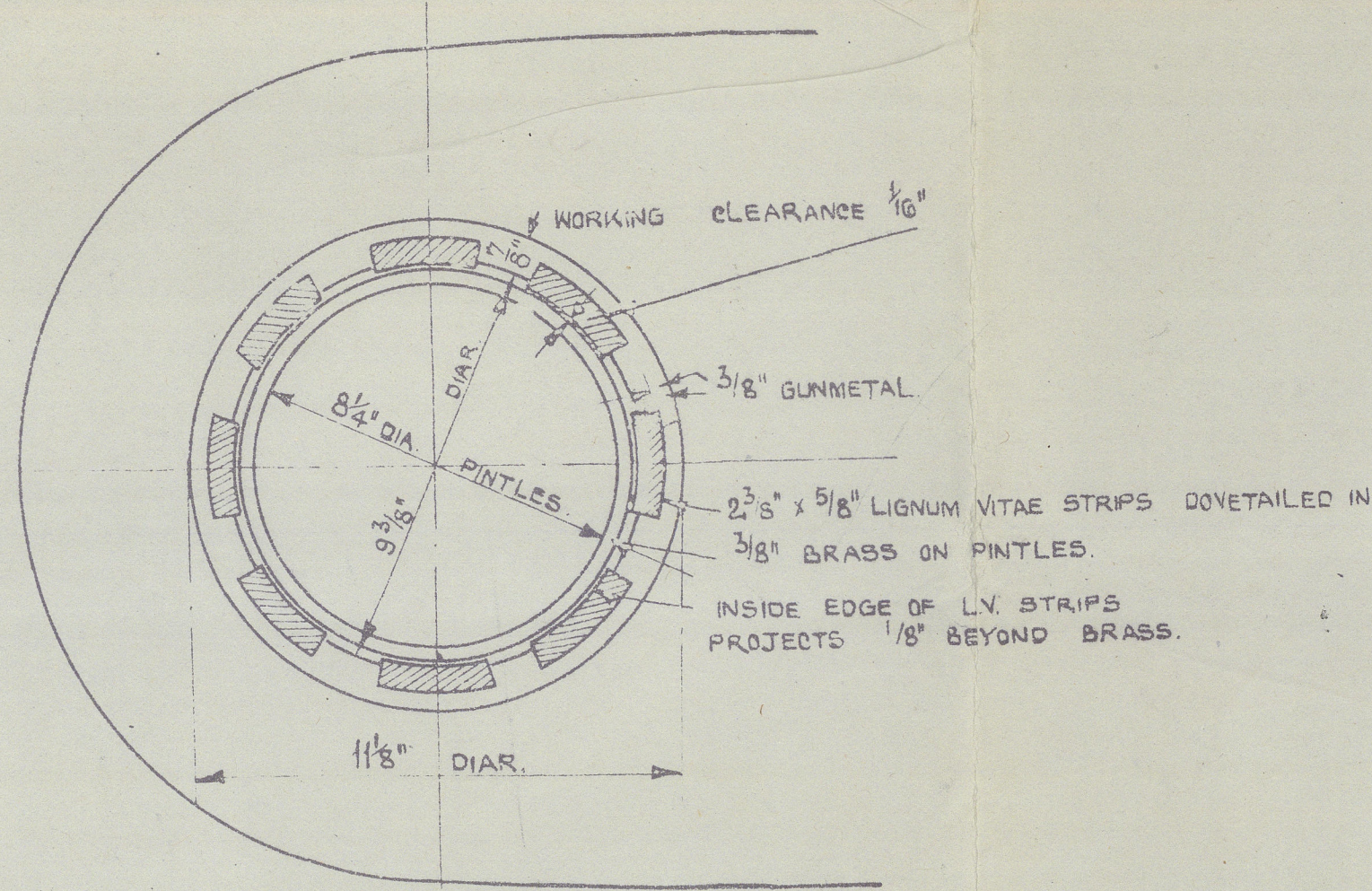


DETAIL OF TOP GUDGEON & PINTLE  
SCALE: - 1/2" = 1 FOOT.

NOTE:- PINTLES TO BE OF STEEL EFFICIENTLY  
"FITTED" AS SHOWN, BRASS BUSHES MUST  
BE TURNED IN ONE PIECE & PROPERLY SHRUNK ON.



DETAIL OF BOTTOM GUDGEON & PINTLE  
SCALE :-  $1\frac{1}{2}" = 1\text{FOOT}$



PLAN OF GUDGEONS  
SCALE:- 3" = 1 FOOT.

PLAN NO. \_\_\_\_\_ P.F.(C) 32  
DEPARTMENT \_\_\_\_\_ ADMIRALTY DMB  
DATE \_\_\_\_\_ 27<sup>th</sup> APRIL 43.

RUDDER:-

TO LLOYD'S REQUIREMENTS.

LOAD DRAFT 26'-9", SHIPS SPEED 11 KNOTS.

AREA OF RUDDER (TO  $\frac{1}{2}$  OF PINTLES) = A = 146 SQ FT

C.G. OF AREA ABAFT  $\phi$  OF PINTLES =  $D = 3.96$  FT

$$A \times B = 578$$

DATE OF SURVEY: 11/1/1981 25 SECTIONS

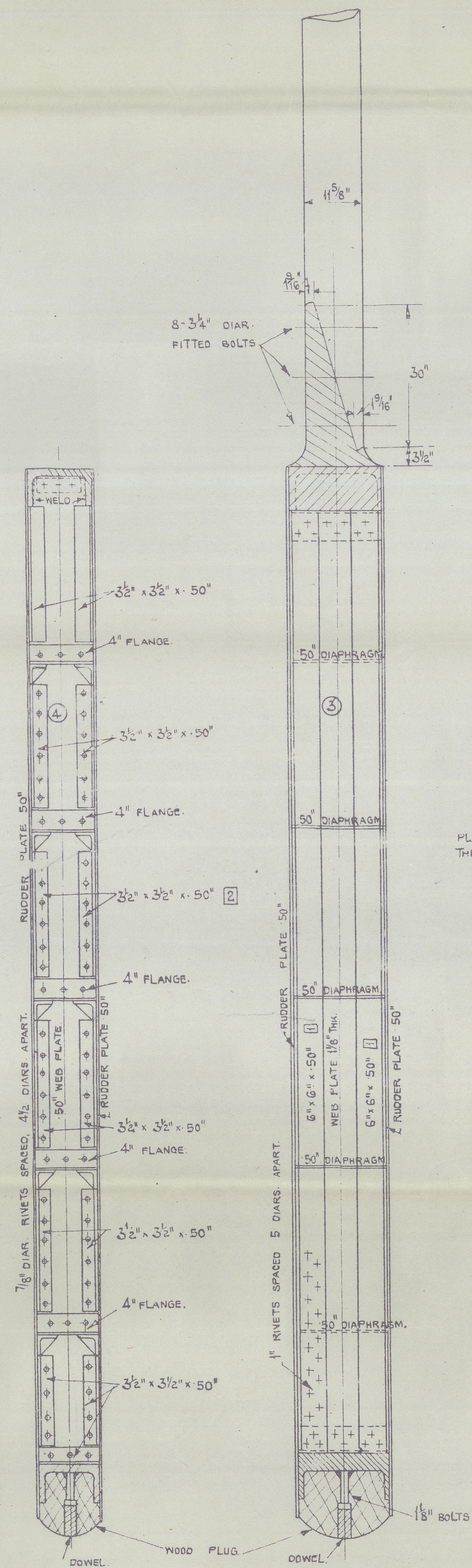
DIAG. OF RUDDER STOCK : II 4 10/6 OF SECTIONAL

RUDDER STOCK OF BEST FORGED STEEL.

RUBBER CASTINGS OF STEEL.

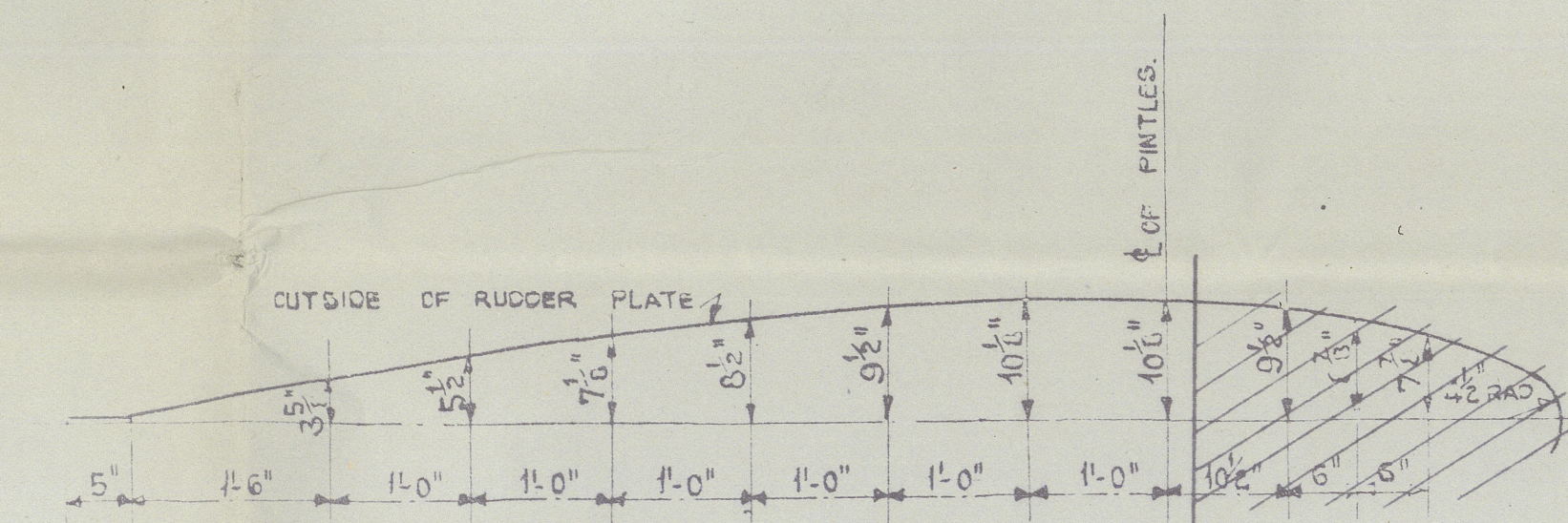
RUDDER & RUDDER POST TO BE TESTED  
WITH BITUMINOUS SOLUTION

WITH BITUMINOUS SOLUTION



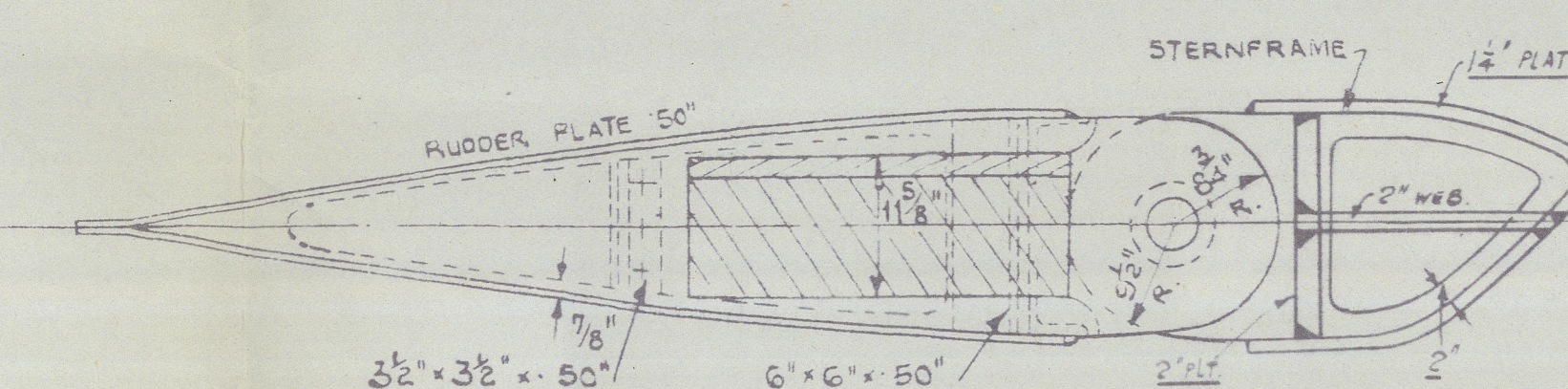
SECTION AT AFTER WEB.  
LOOKING AFT.

SECTION AT FORD WEB.  
LOOKING AFT.



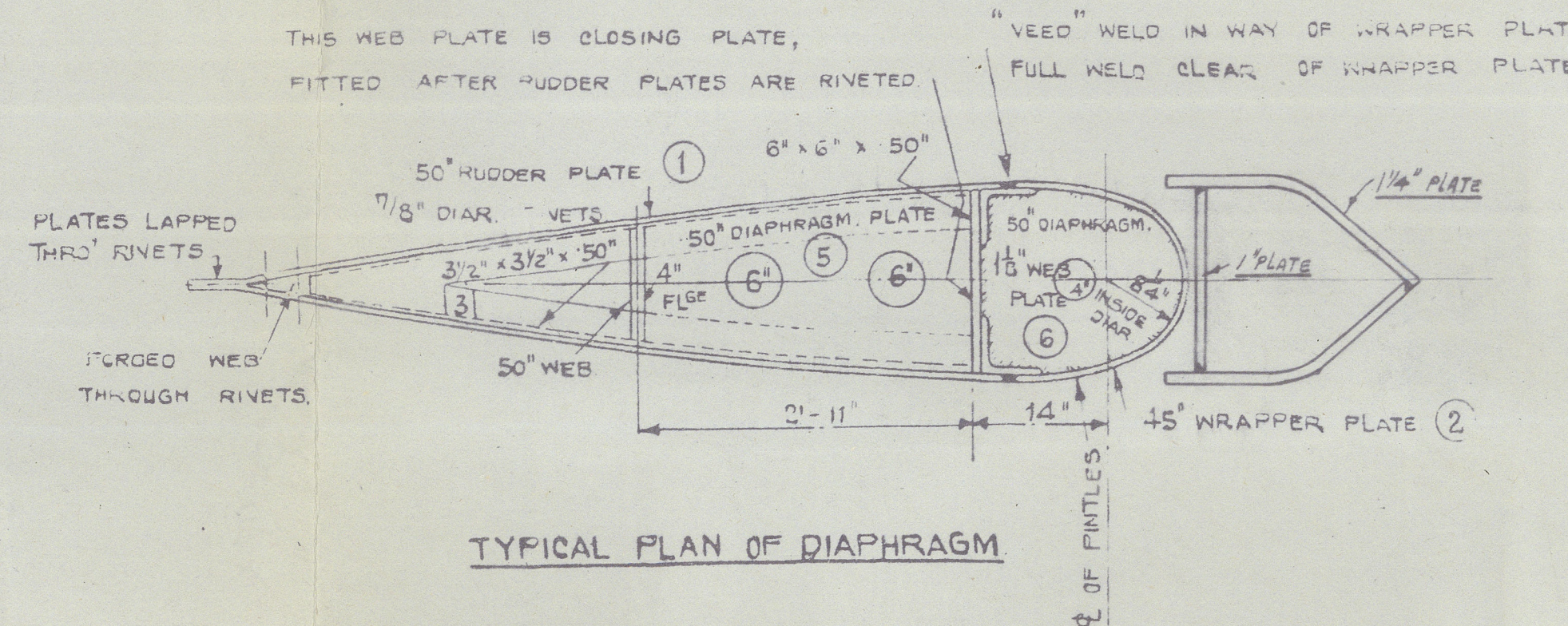
### OFFSETS FOR RUDDER & RUDDER POST.

NOTE:- LEVEL LINE SCRIBED ON TOP  
AND BOTTOM CASTINGS BY MAKERS

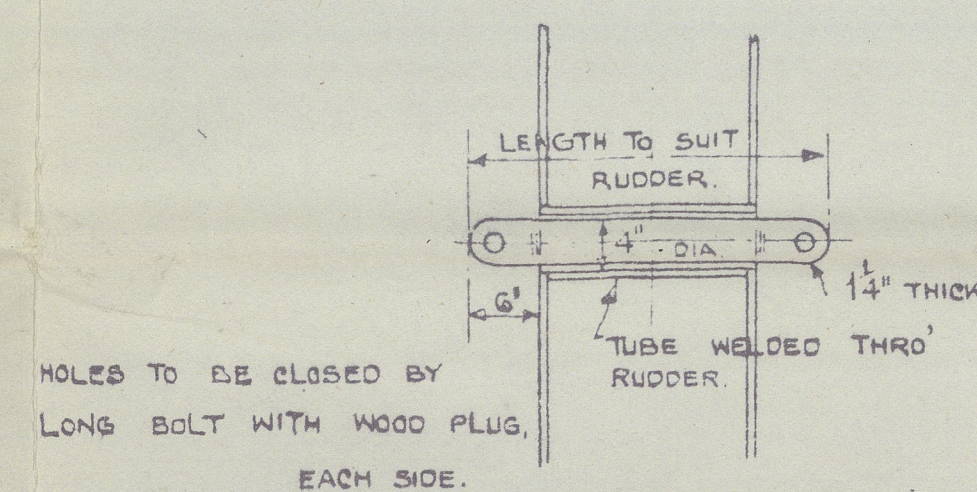


PLAN VIEW OF TOP CASTING

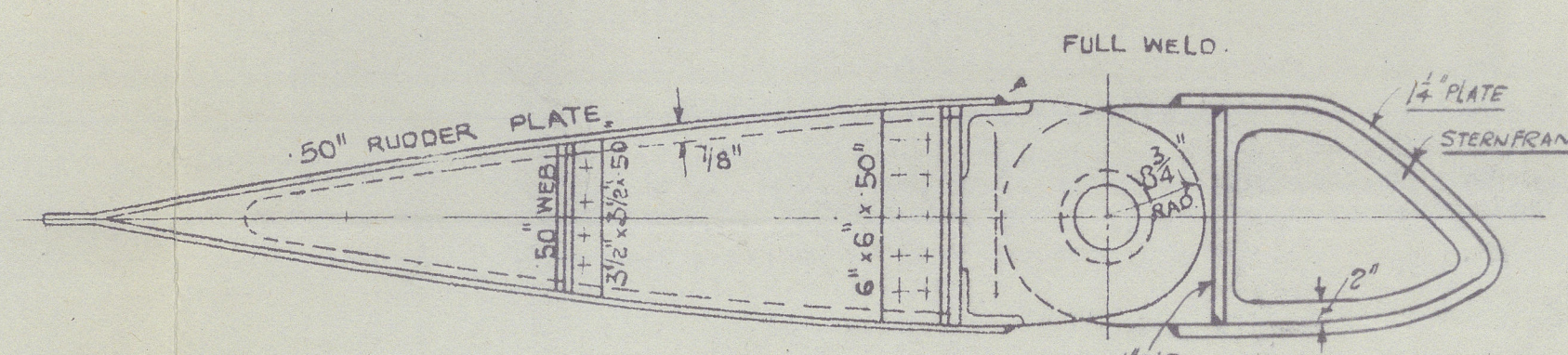
THIS WEB PLATE IS CLOSING PLATE, "VEED" WELD IN WAY OF WRAPPER PLATE  
FITTED AFTER RUDDER PLATES ARE RIVETED, FULL WELD CLEAR OF WRAPPER PLATE



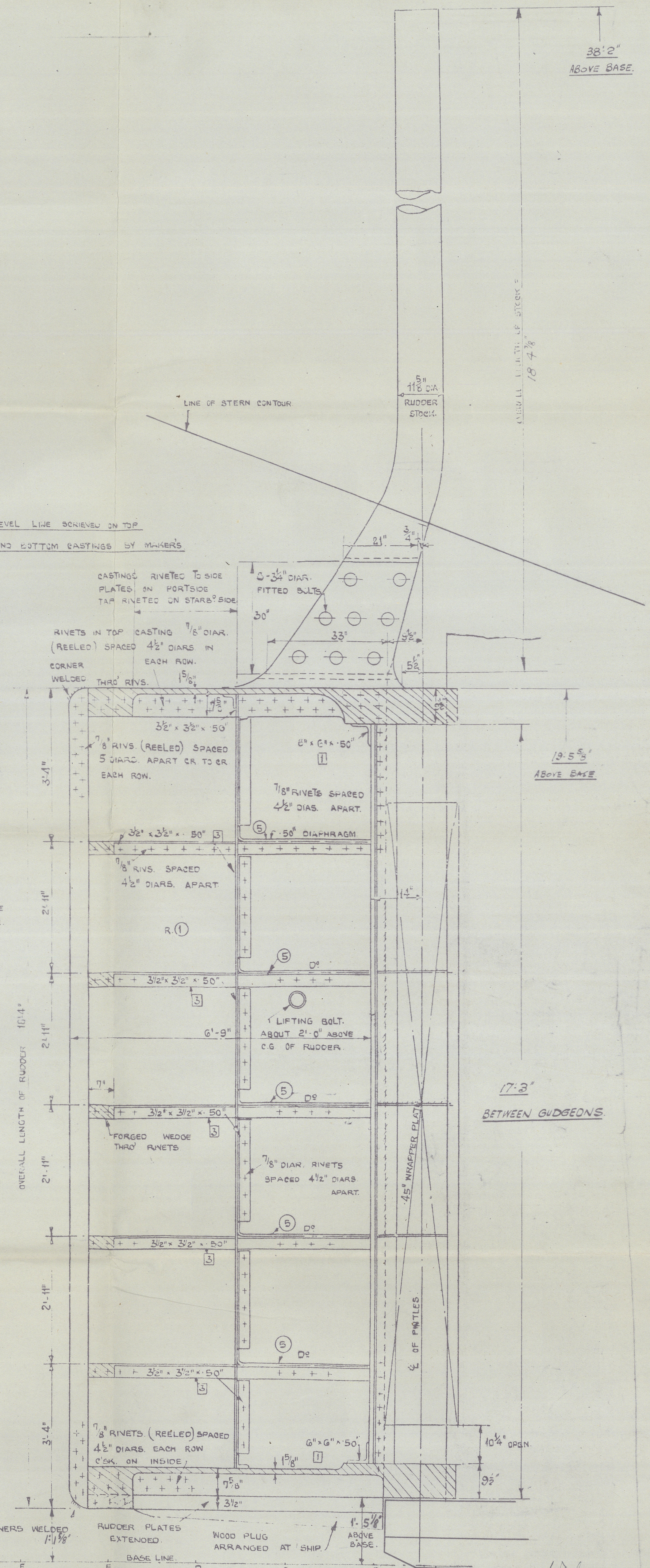
TYPICAL PLAN OF DIAPHRAGM



DETAIL OF RUDDER LIFTING BOLT



PLAN VIEW OF LOWER CASTING.



47

12. 4. 44 2020

20. P. T.S. FORSTER (544-5-6) 14-1-44  
18 & W. SUNDERLAND Forge (544-5-6) 25-1-44  
3 B.P.  
20 W. LLOYD'S 2-4-44 (544-5-6) 1-2-44



26

JOHN READHEAD &  
SONS LTD.,

*Rudder*

*Nos 544, 5, 6*

*PALIKONDA*

*"Shakistan"*

15

280 W LLOYDS 4-4-44 (544-86)



© 2020

Lloyd's Register  
Foundation

003541-003548-0201