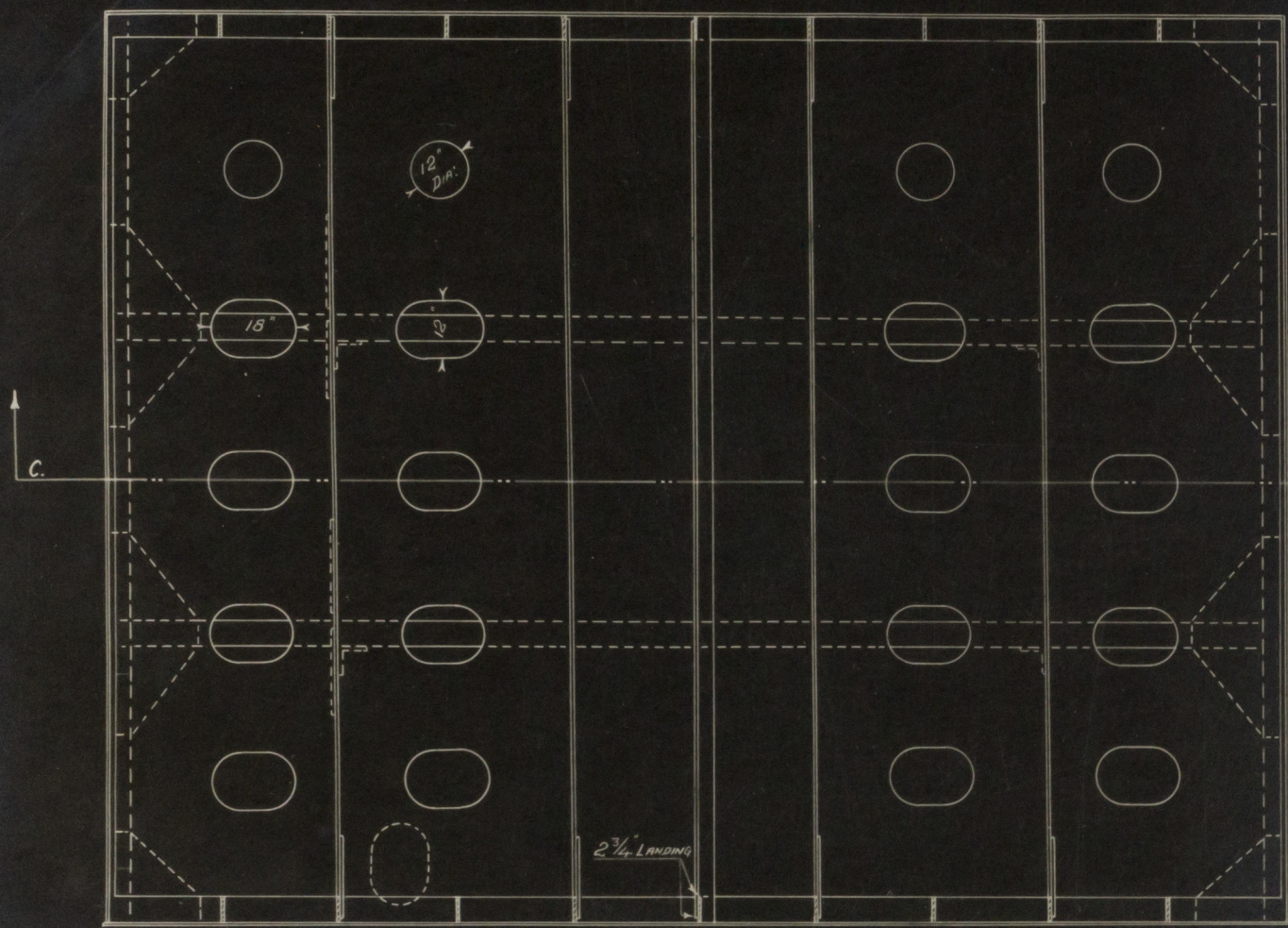


— S.S. "CHARLES DICKENS" —

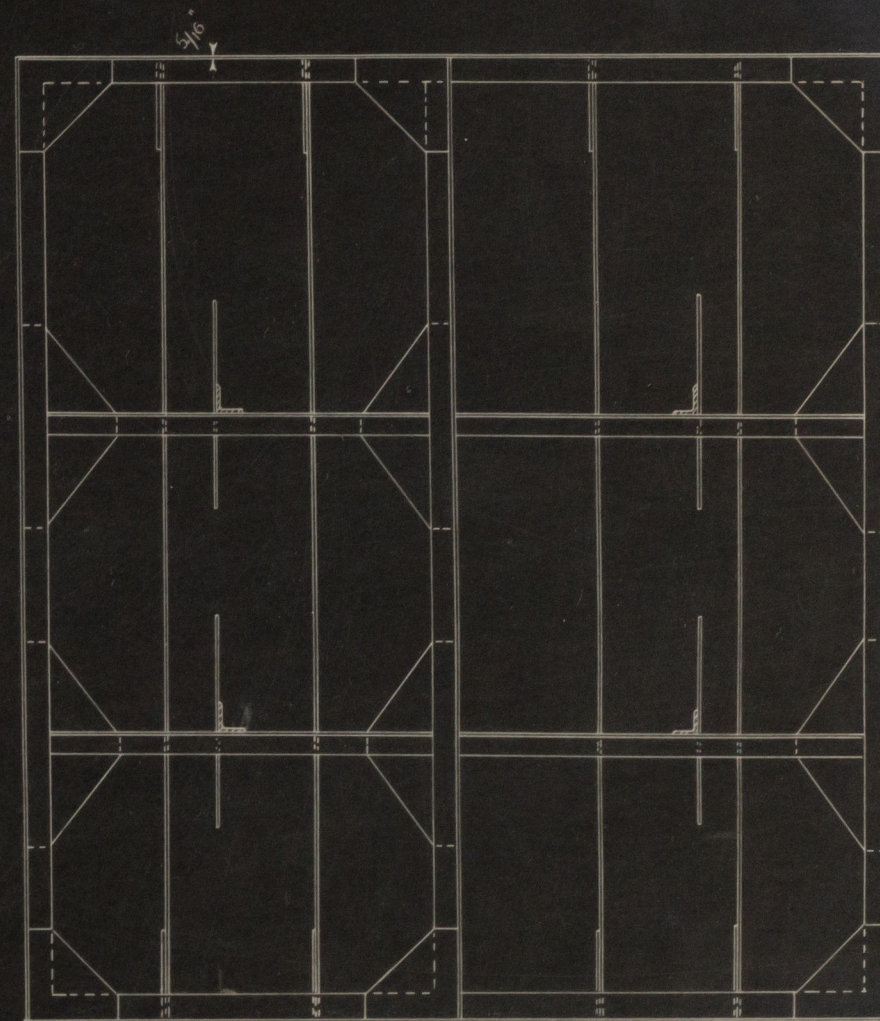
OIL FUEL STORAGE TANK AS FITTED IN LOWER
CROSS-BUNKER, PORT & STARBOARD

2 - OFF



FRONT ELEVATION THRO' LINE A.A.

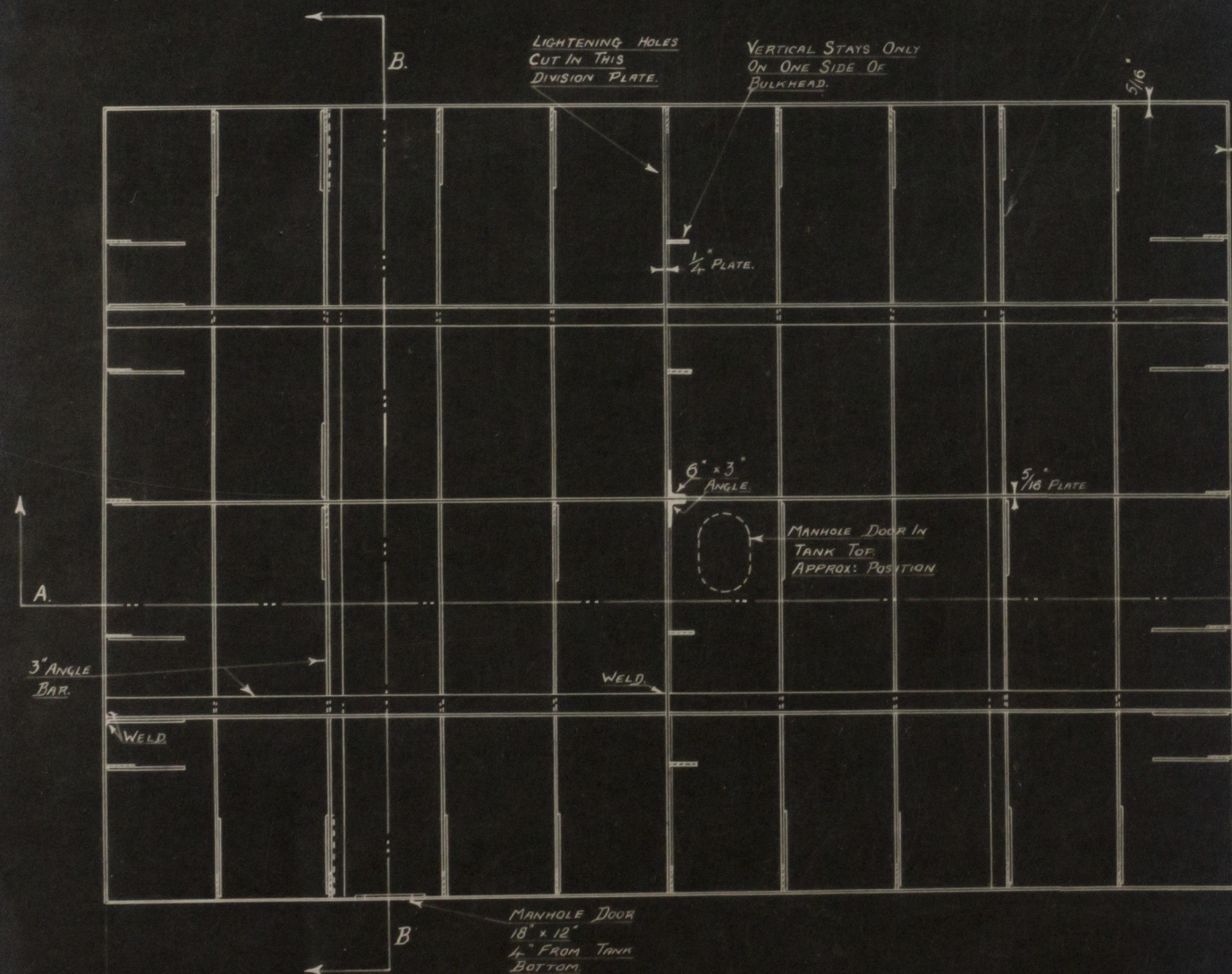
Scantlings suitable
for overflow 4 ft
above tank top



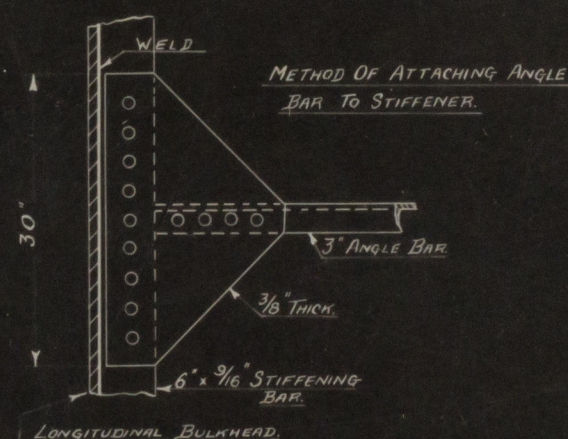
SIDE ELEVATION THRO' LINE B.B.

TANK SHELL ALL WELDED.

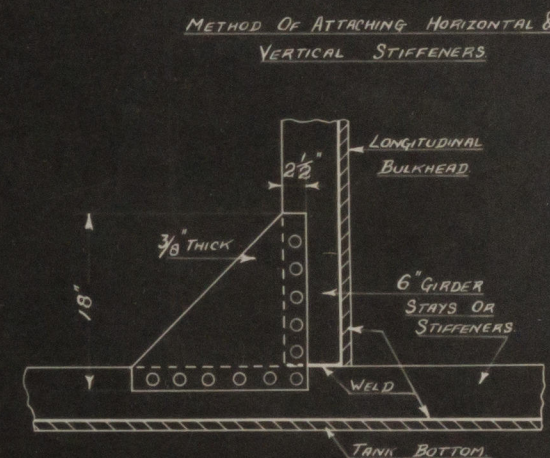
all stiffeners assumed
to be 6" x 9/16" plate



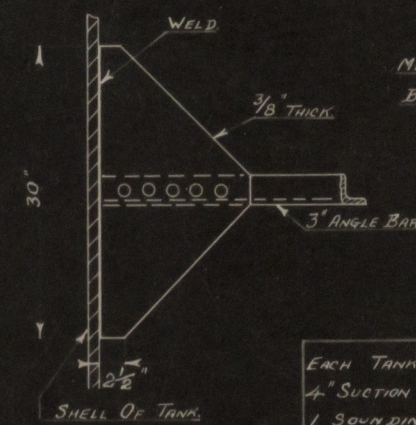
PLAN THRO' C.C.



METHOD OF ATTACHING ANGLE
BAR TO STIFFENER.



METHOD OF ATTACHING HORIZONTAL &
VERTICAL STIFFENERS

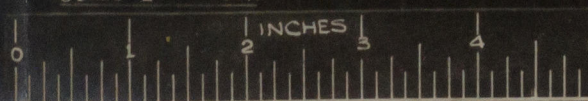


METHOD OF ATTACHING ANGLE
BAR TO BULKHEAD.

EACH TANK IS FITTED WITH 4" FILLING,
4" SUCTION & 4" AIR PIPE, ALSO
1 SOUNDING PIPE & 1 OVERFLOW
FROM SETTLING TANKS.
TANKS CAN BE LEVELLED THROUGH
SUCTION LINES.

BULKHEADS HAVE VERTICAL STIFFENERS ON
ONE SIDE ONLY.
2" MANHOLE DOORS 18" x 12" COMPENSATING
RING FITTED ON TANKS.
BULKHEAD STIFFENING BARS 6" x 9/16", WELDED
TO SHELL & BULKHEADS.
TRANSVERSE BULKHEAD RIVETED TO STIFFENERS
ON THREE SIDES, RIVETED TO ANGLE PLATE ON
ONE SIDE, SINGLE RIVETING.
LONGITUDINAL BULKHEAD RIVETED TO TWO SIDE
STIFFENERS, 6" CLEAR AT TOP & BOTTOM.

SCALE 1/2" = 1 FOOT.



TRACING No 6976

S/s "Charles Dickens."

Oil fuel storage tank as fitted
hwc rept No. 103883.



© 2020

Lloyd's Register
Foundation

003549-003555-0196