

PLAN OF FORGED RUDDER

S.S. N° 826-539

SCALE 1" = 1 FOOT.

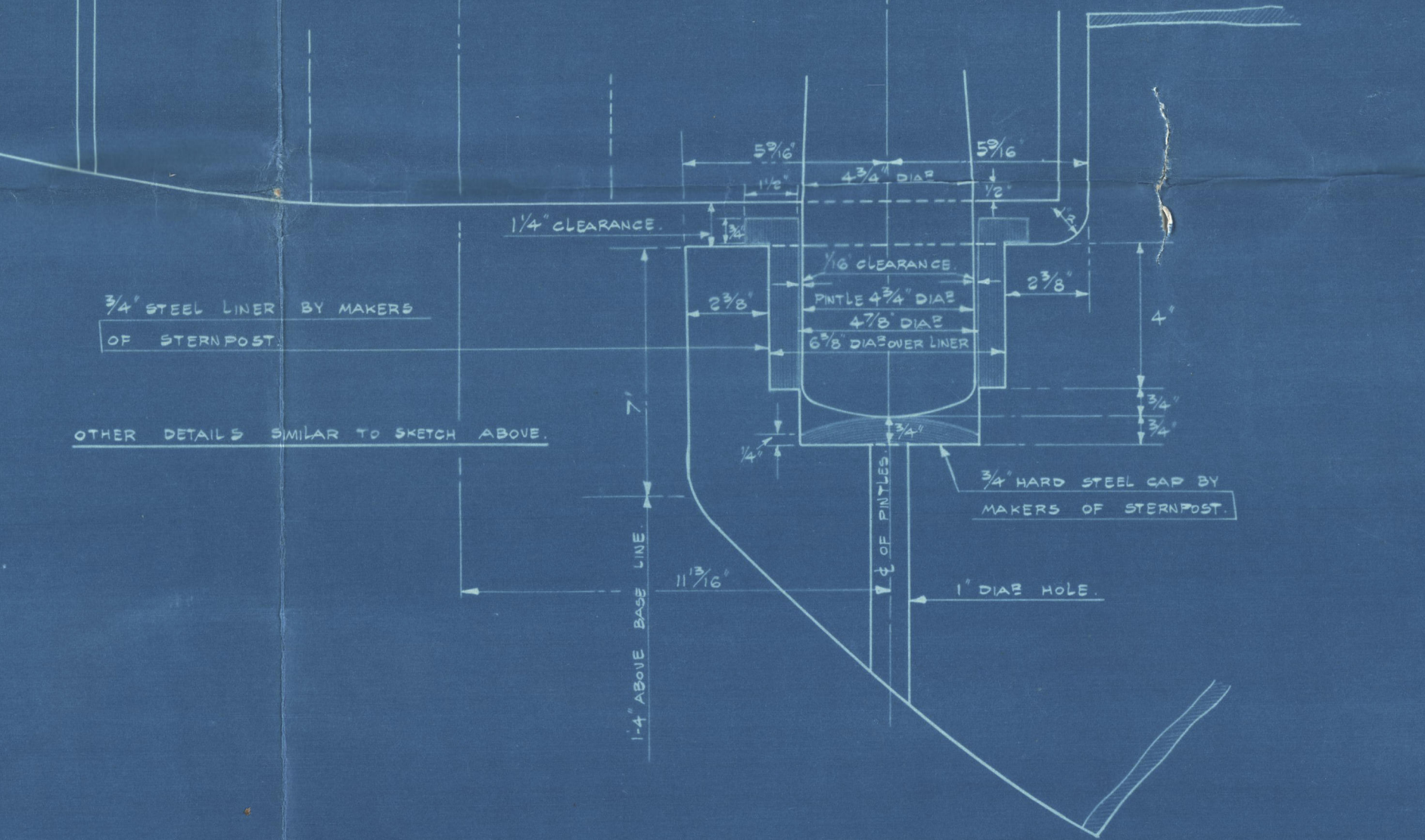
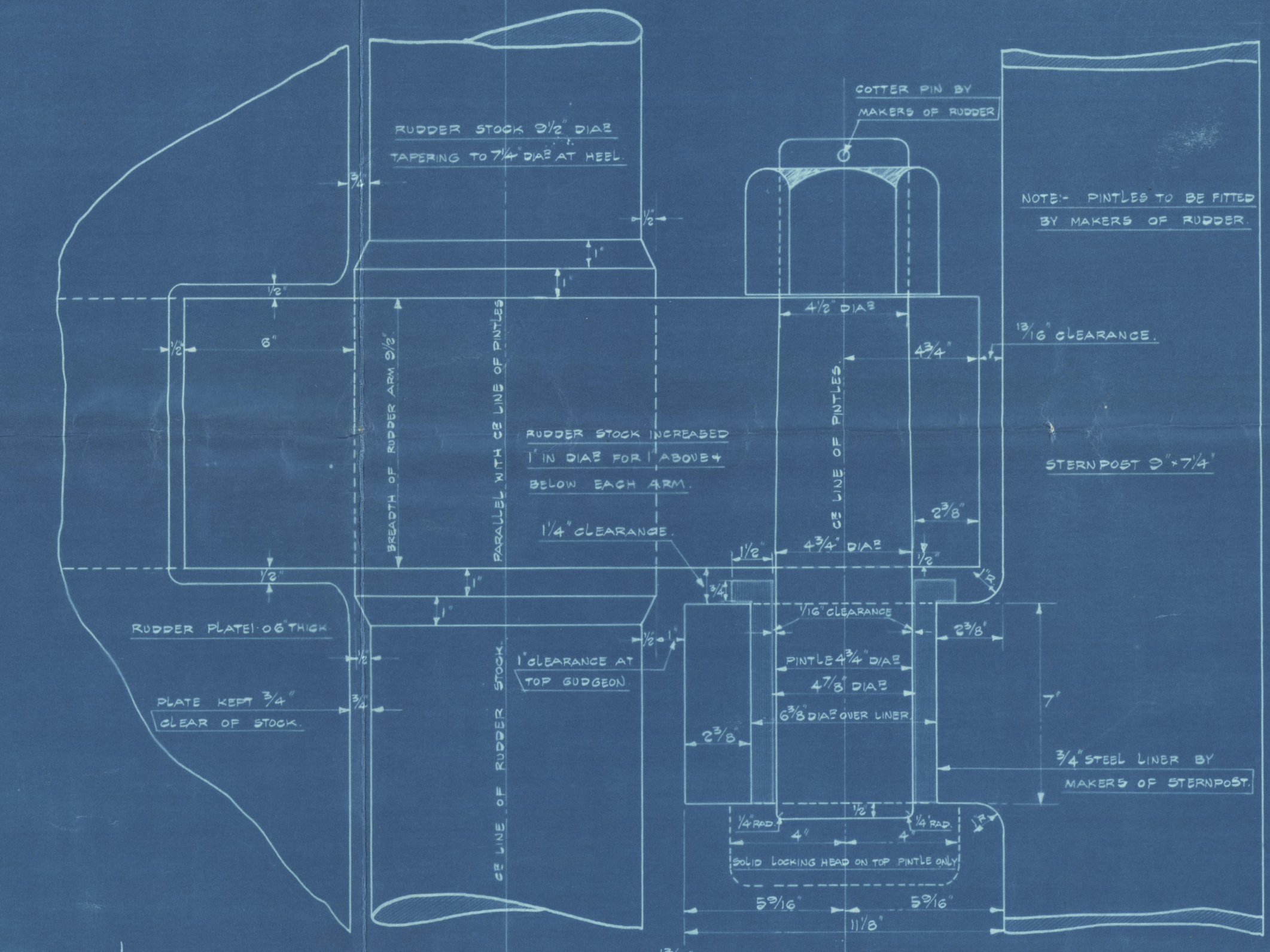
DIMENSIONS - 355.0 B.P. x 58.6 EXT. x 33.3 MLD. x 27.6 MOUNTED TO UPPER DECK.
AREA OF RUDDER FROM FORE SIDE OF POST = 122.94 FT.
CENTRE OF GRAVITY FROM CENTRE LINE OF PINTLES = 3.4 FT.
SPEED UNDER 10 KNOTS. DIAMETER OF RUDDER STOCK, 30".
TO CLASS 100 A.I. AT LLOYD'S SPECIAL SURVEY.
NUTS ON PINTLES 7" ACROSS FLATS x 4" DEEP.
SIZE OF RIVET HOLES MUST NOT BE LESS THAN GIVEN.
ANY EXCESS ON THE GIVEN DIMENSIONS WILL NOT BE PAID FOR.



DETAIL SKETCH OF GUDGEON & PINTLE.

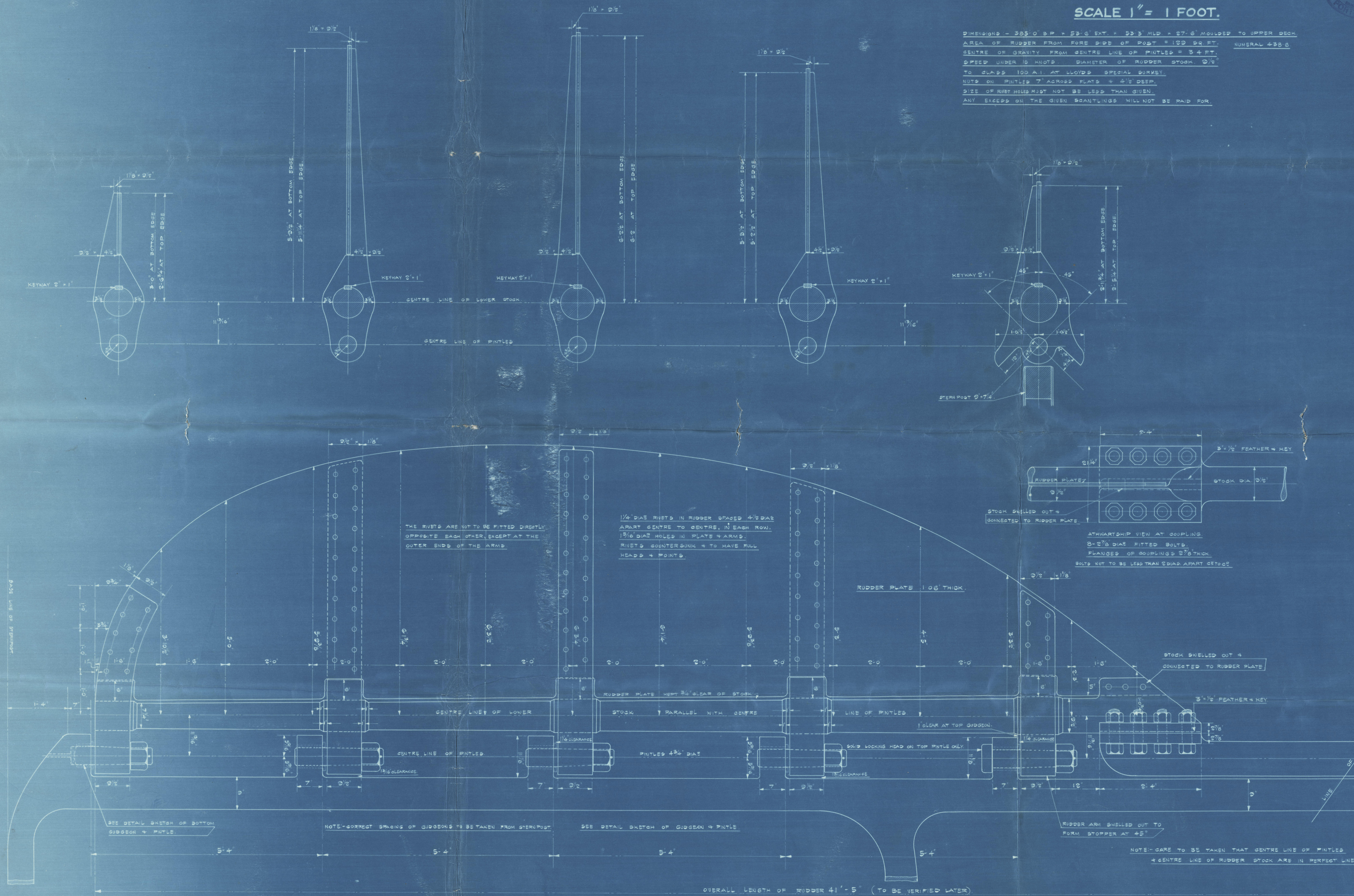
SCALE 3" = 1 FOOT.

FOR BOTTOM GUDGEON SEE OTHER DETAIL.



DETAIL SKETCH OF BOTTOM GUDGEON.

SCALE 3" = 1 FOOT.



APPROVED for 826
LLOYD'S REGISTER OF SHIPPING

APPROVED for 839
LLOYD'S REGISTER OF SHIPPING

003549-003555-0198

LITHGOWS LTD

Nº 826. ✓ 839

RUDDER

806

FUKUTO MARU 'X'

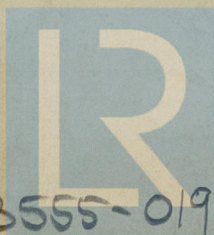
S.S. "Greyvale"



Greenock Report: N. 19090.

S.S. "Donagh"

Lat. First entry Report N. 20174.



© 2020

Lloyd's Register
Foundation

003549-003555-0198