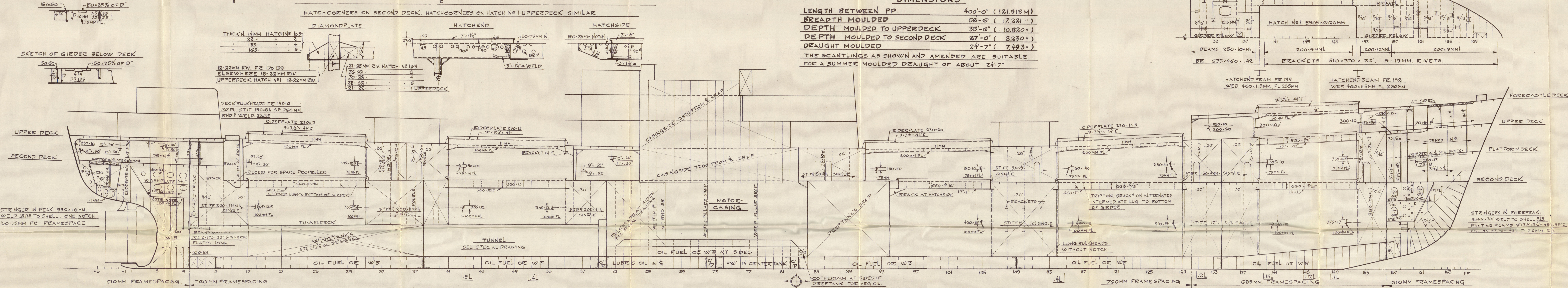


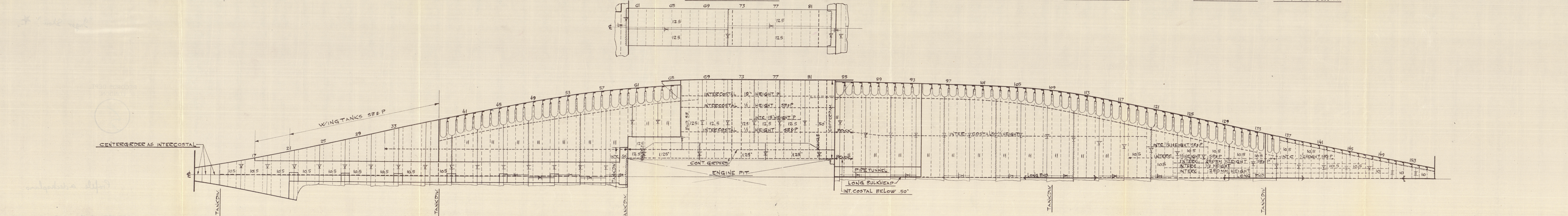
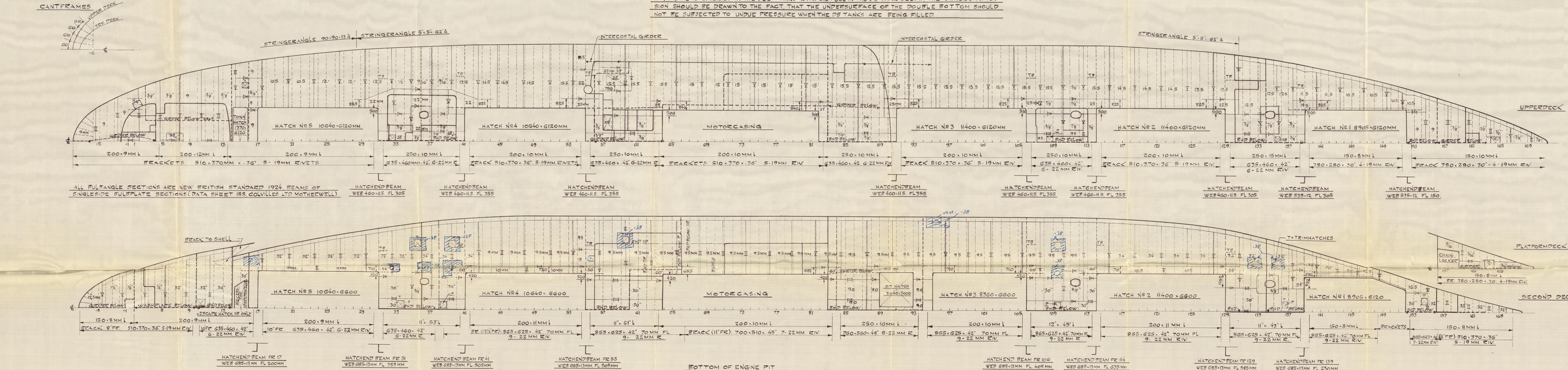
CLASS
SINGLE SCREW CARGO MOTOR VESSEL WITH FORECASTLE AND TWO CONTINUOUS
DECKS WITH TONNAGE OPENING AFT. VESSEL BUILT TO CLASS
LLOYDS REGISTER OF SHIPPING #100A1
WITH SCANTLINGS CORRESPONDING TO A MEAN DRAUGHT OF 24'-7" DEEPTANK
AND WINGTANKS TO CARRY WATERBALLAST, VEGETABLE OIL OR FUEL OIL DOUBLE BOT-
TOM TO CARRY WATERBALLAST OR FUEL OIL. (FLASHPOINT ABOVE 150° FAHR.)

DIMENSIONS

LENGTH BETWEEN PP	400'-0" (121.918 M)
BREADTH MOULDED	58'-6" (17.241 ")
DEPTH MOULDED TO UPPERDECK	33'-6" (10.280 ")
DEPTH MOULDED TO SECOND DECK	27'-0" (8.230 ")
DEAUGHT MOULDED	24'-7" (7.493 ")
THE SCANTLINGS AS SHOWN AND AMENDED ARE SUITABLE FOR A SUMMER MOULDED DEAUGHT OF ABOUT 24'-7"	

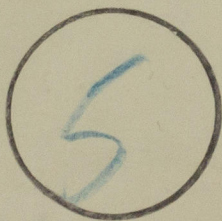


IF VEG OIL IS CARRIED IN THE DEEPTANKS WITH OIL FUEL IN THE DB TANK BELOW, THE OWNER'S ATTENTION SHOULD BE DRAWN TO THE FACT, THAT THE UNDERSURFACE OF THE DOUBLE BOTTOM SHOULD NOT BE SUBJECTED TO UNDUE PRESSURE WHEN THE DB TANKS ARE BEING FILLED.



"Inger Skou" ★

RECORDS DEPT.,
LONDON.



Profile & deckplans.

003581-003590-0169



© 2020

Lloyd's Register
Foundation