

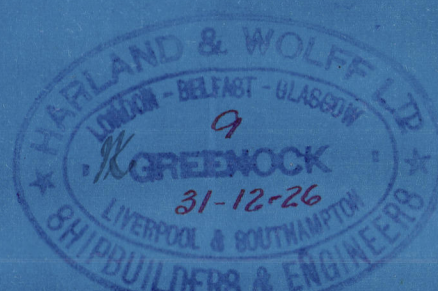
# TWIN SCREW TUG. Nº 796 GK. RUDDER & STERNPOST.

SCALE 1" = 1 FOOT.

PLAN Nº 14

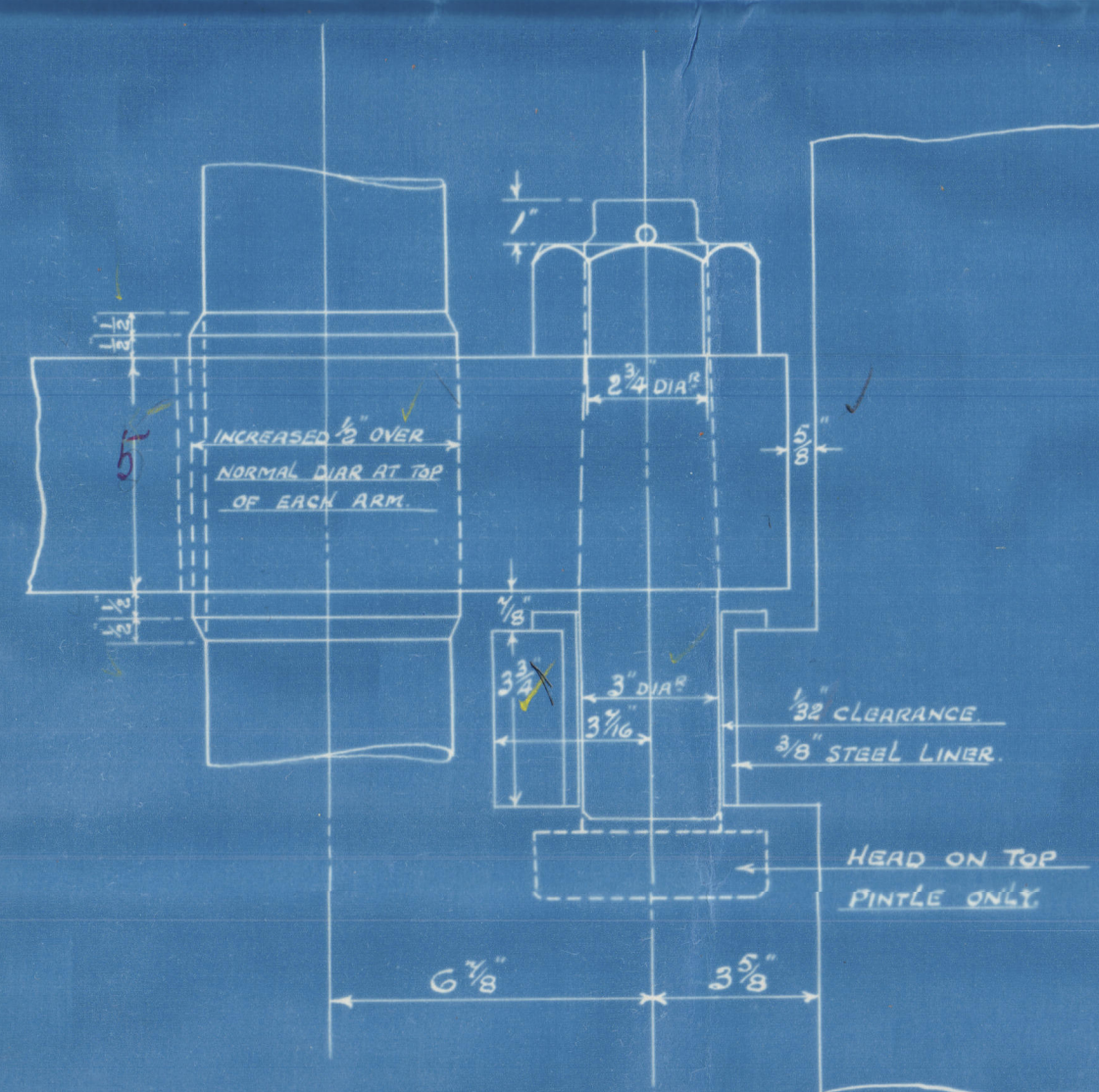
L x D = 1560  
A : AREA OF RUDDER TAKEN FROM FORE SIDE OF MAIN PIECE = 35 SQ. FT.  
D : CENTRE OF GRAVITY OF AREA A AHEAD CENTRE LINE OF PINTLES = 2.34 FT.  
A x D = 82  
SPEED OF VESSEL = 11 KNOTS.  
RUDDER HEAD = 5 1/2" DIAM. PINTLES = 3" DIAM. STERNPOST = 6 1/2" x 2 1/2".

RUDDER STOCK & ARMS TO BE OF FORGED IRON; ARMS TO BE SHRUNK & KEYED ON.  
STERNPOST TO BE OF FORGED IRON WITH GUDGEONS FORGED ON.



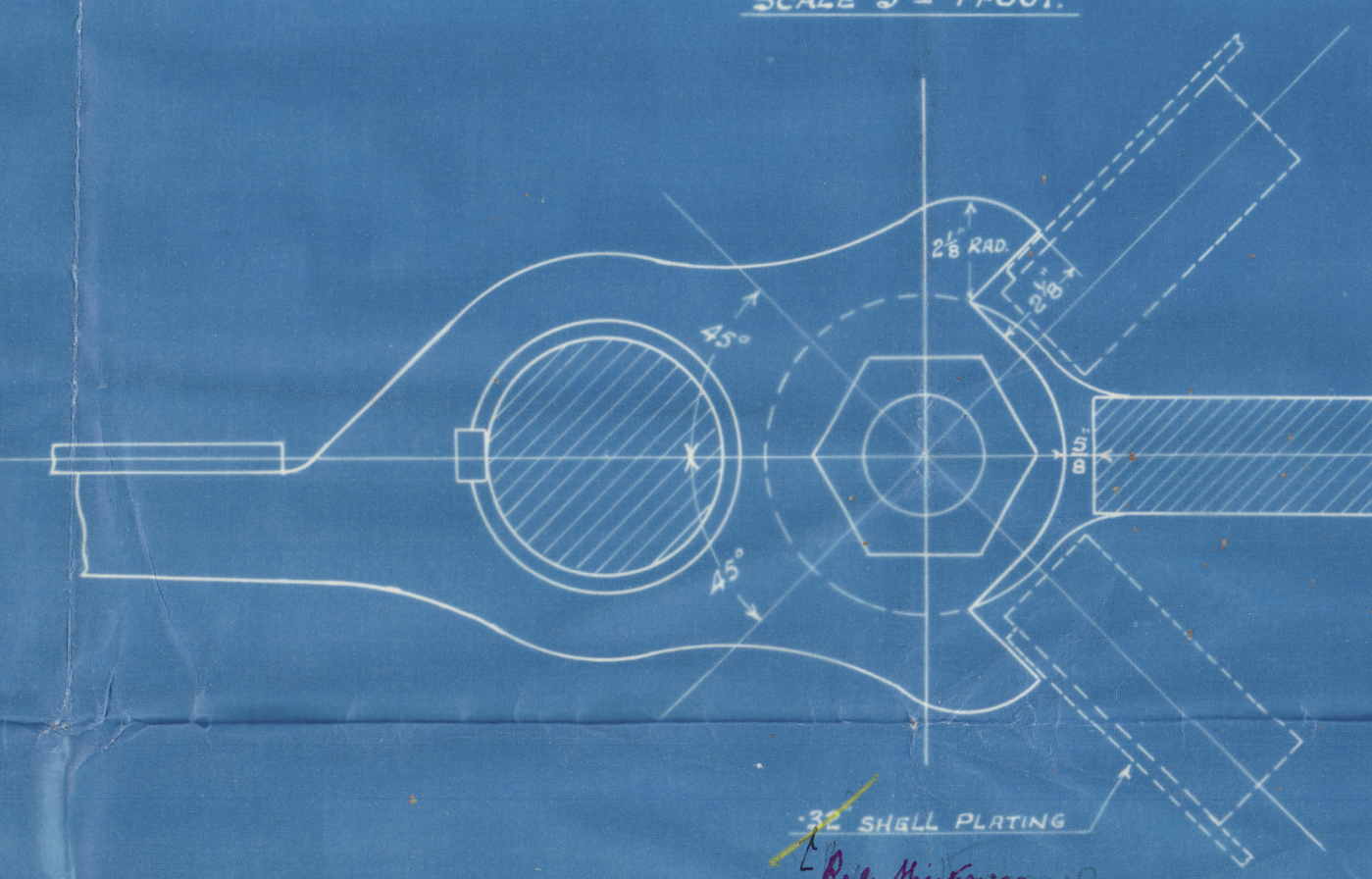
DETAILS OF PINTLES AT A & B.

SCALE 3" = 1 FOOT



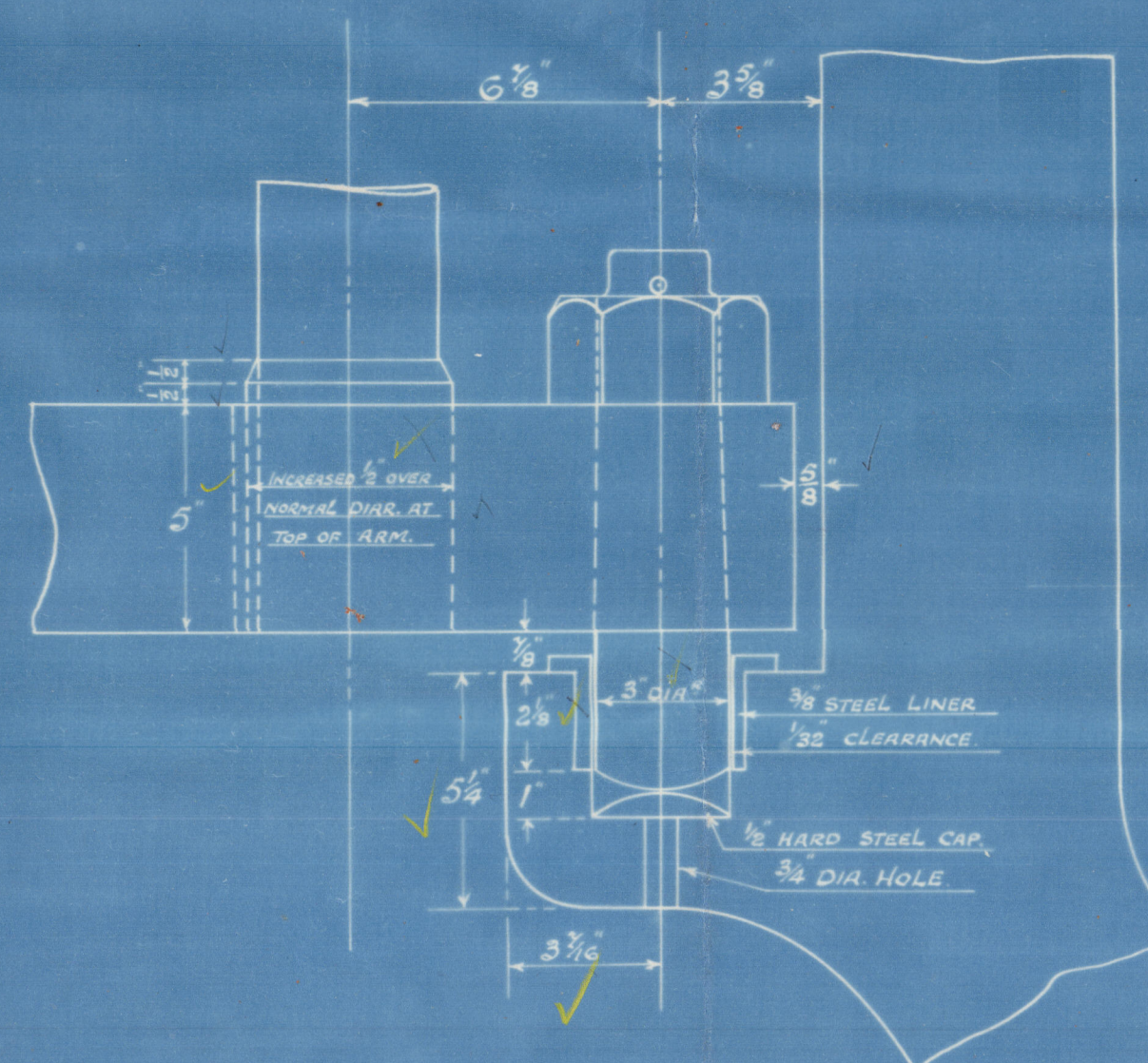
DETAIL OF STOPPER ARM

SCALE 3" = 1 FOOT.



DETAIL OF PINTLE AT C

SCALE 3" = 1 FOOT.



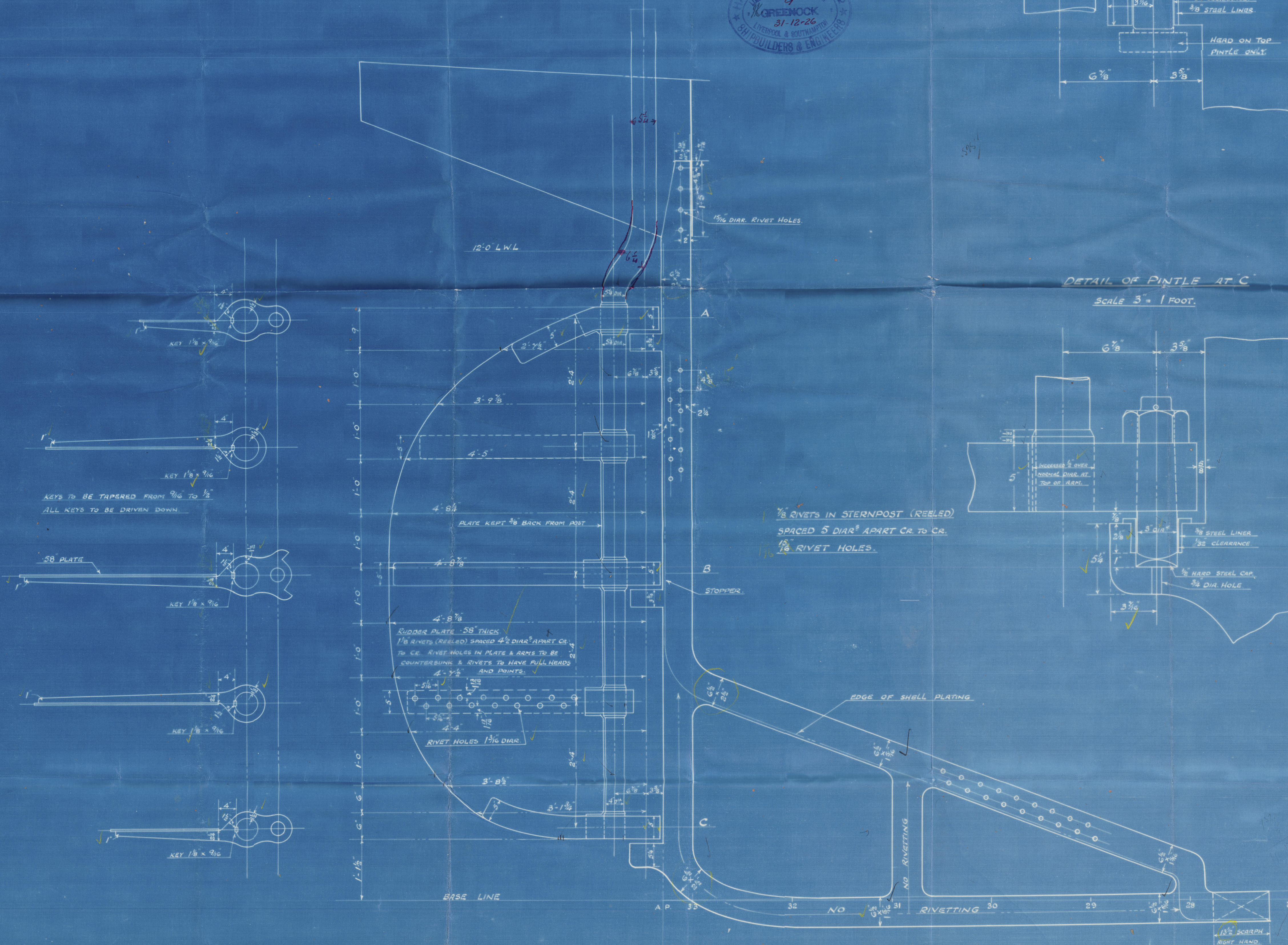
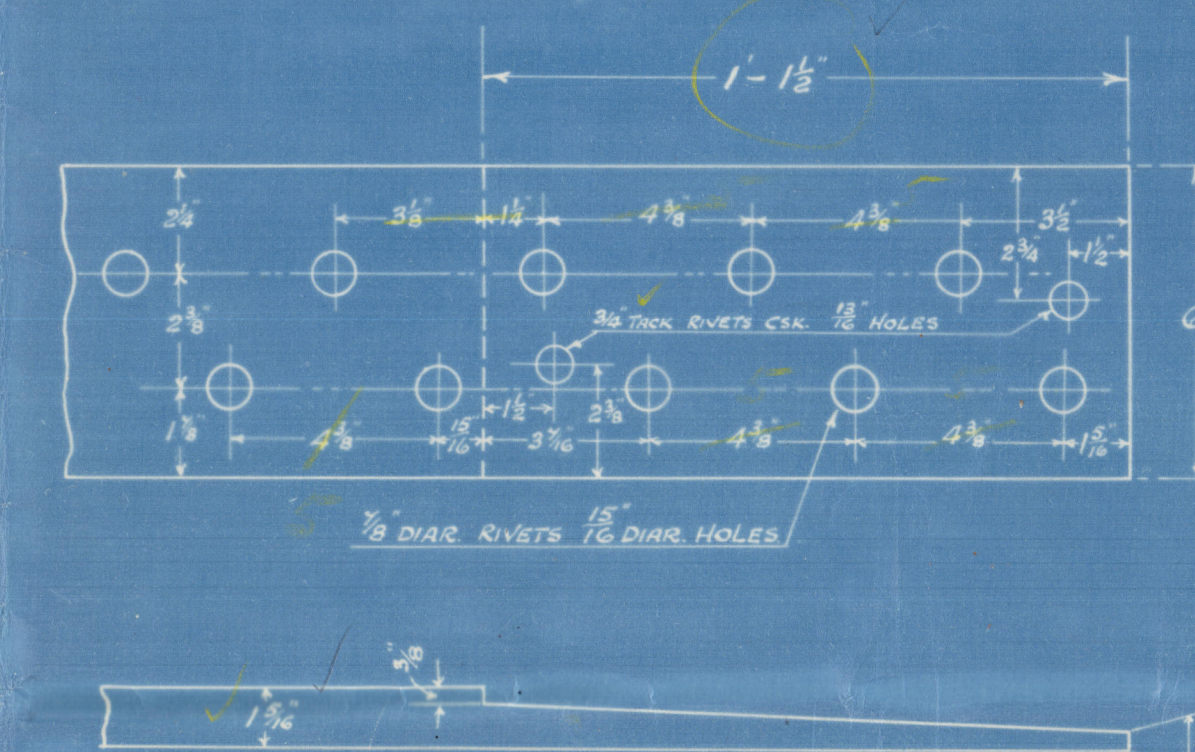
APPROVED

LOYDS REGISTER OF SHIPPING

DATE 11.1.27

DETAIL OF SCARPH.

SCALE 3" = 1 FOOT.



003581-003590-0261



PLAN. OF. STERN. FRAME & RUDDER.

HARLAND AND WOLFF'S No 796.

T. S. T. LAHEJ.

GRK. RPT. No. 18462.

003581-003590-0261



© 2020

Lloyd's Register  
Foundation