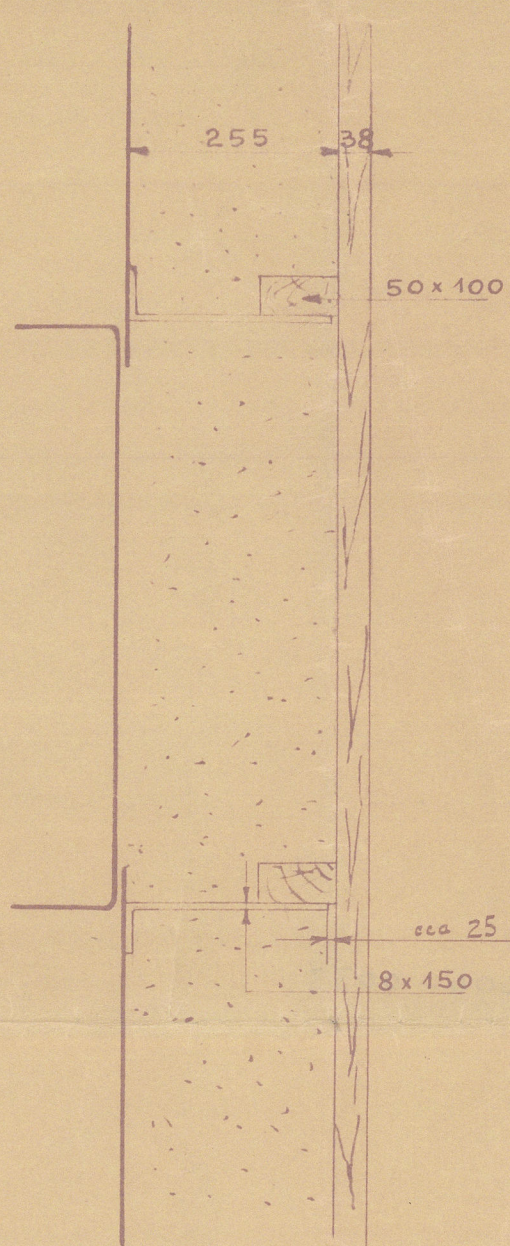
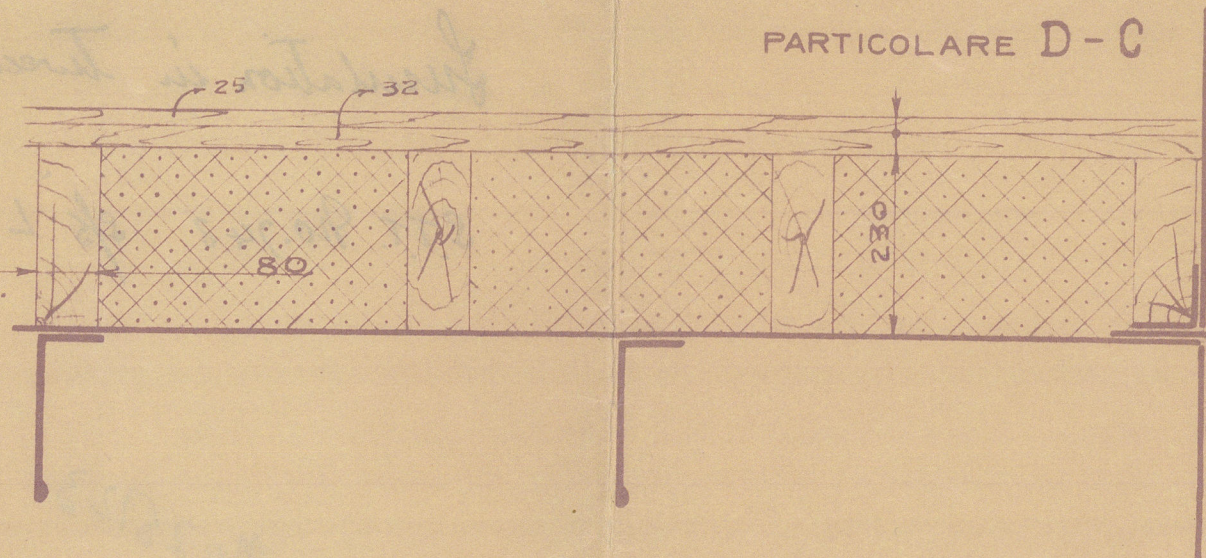


18/3/26

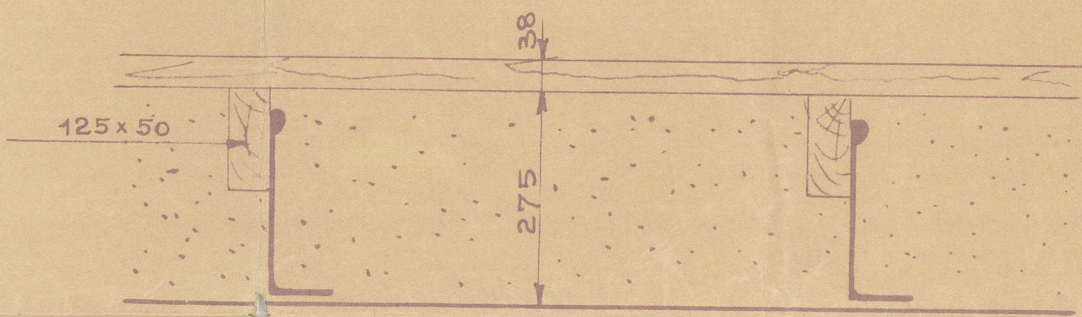
PARTICOLARE A



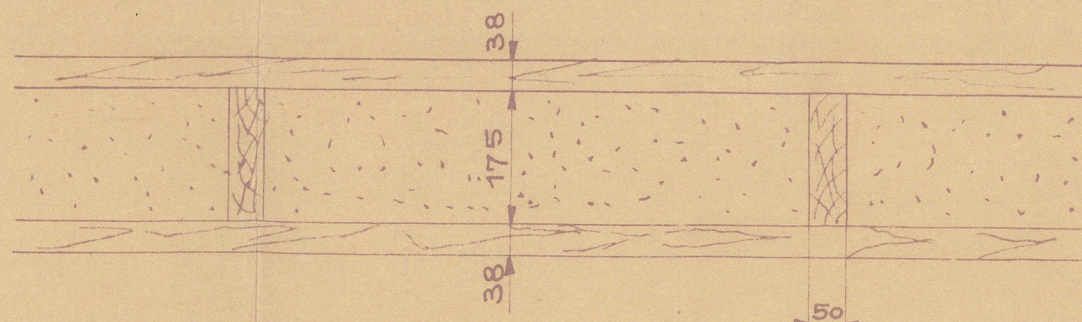
PARTICOLARE D-C



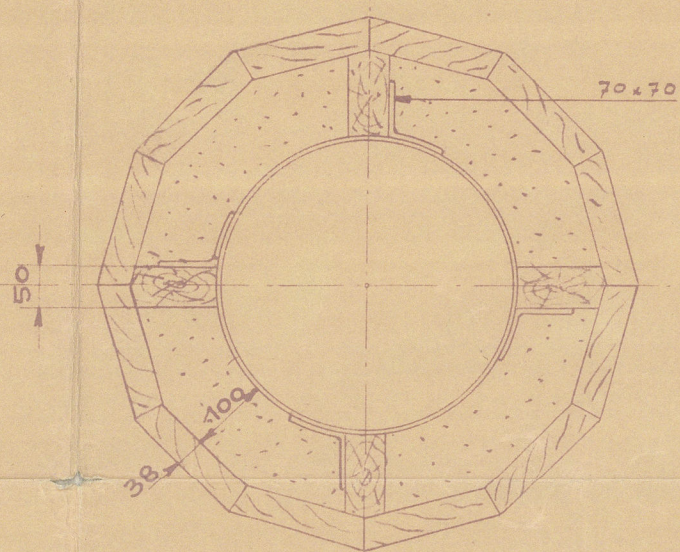
PARTICOLARE E



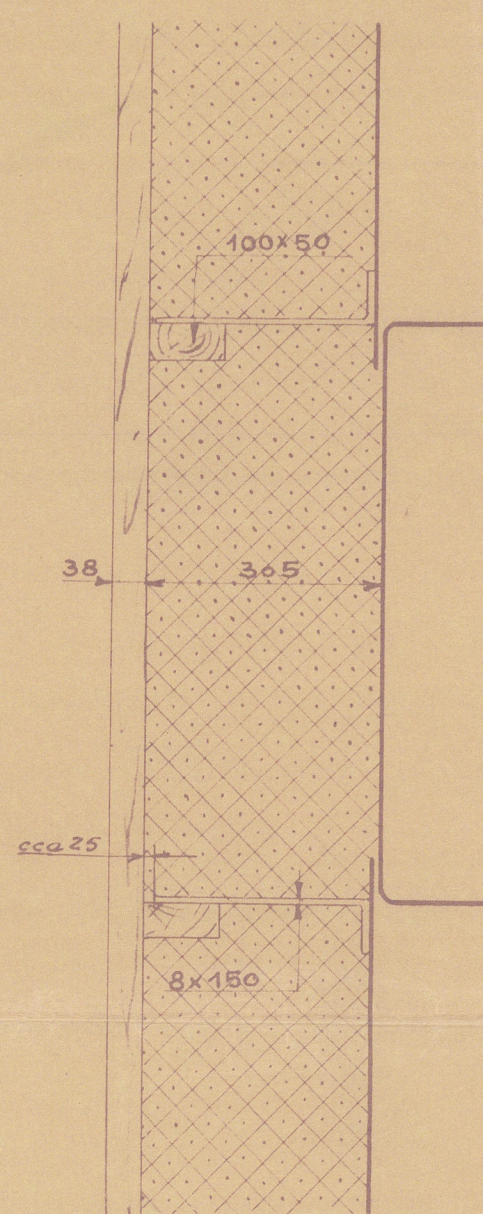
PARTICOLARE F



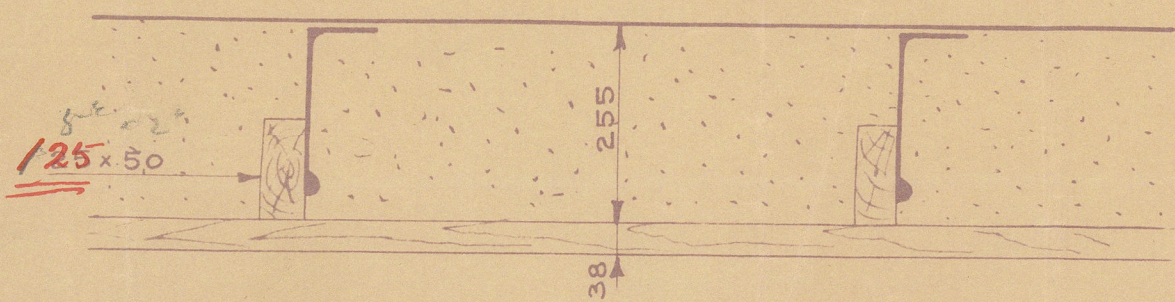
PARTICOLARE G



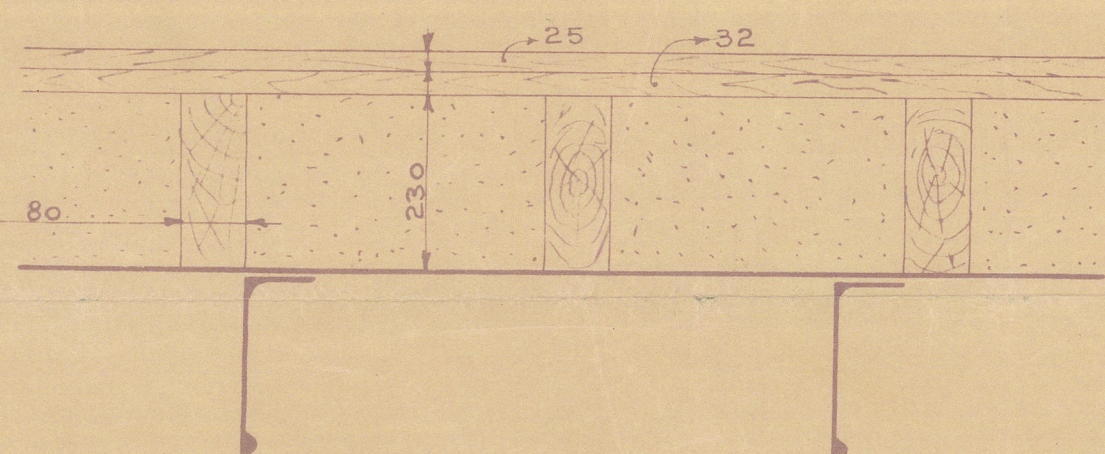
PARTICOLARE H



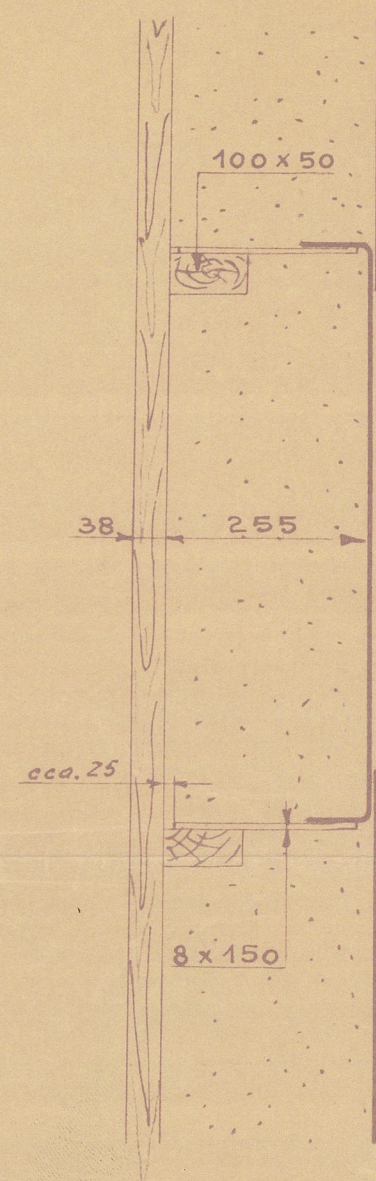
PARTICOLARE B



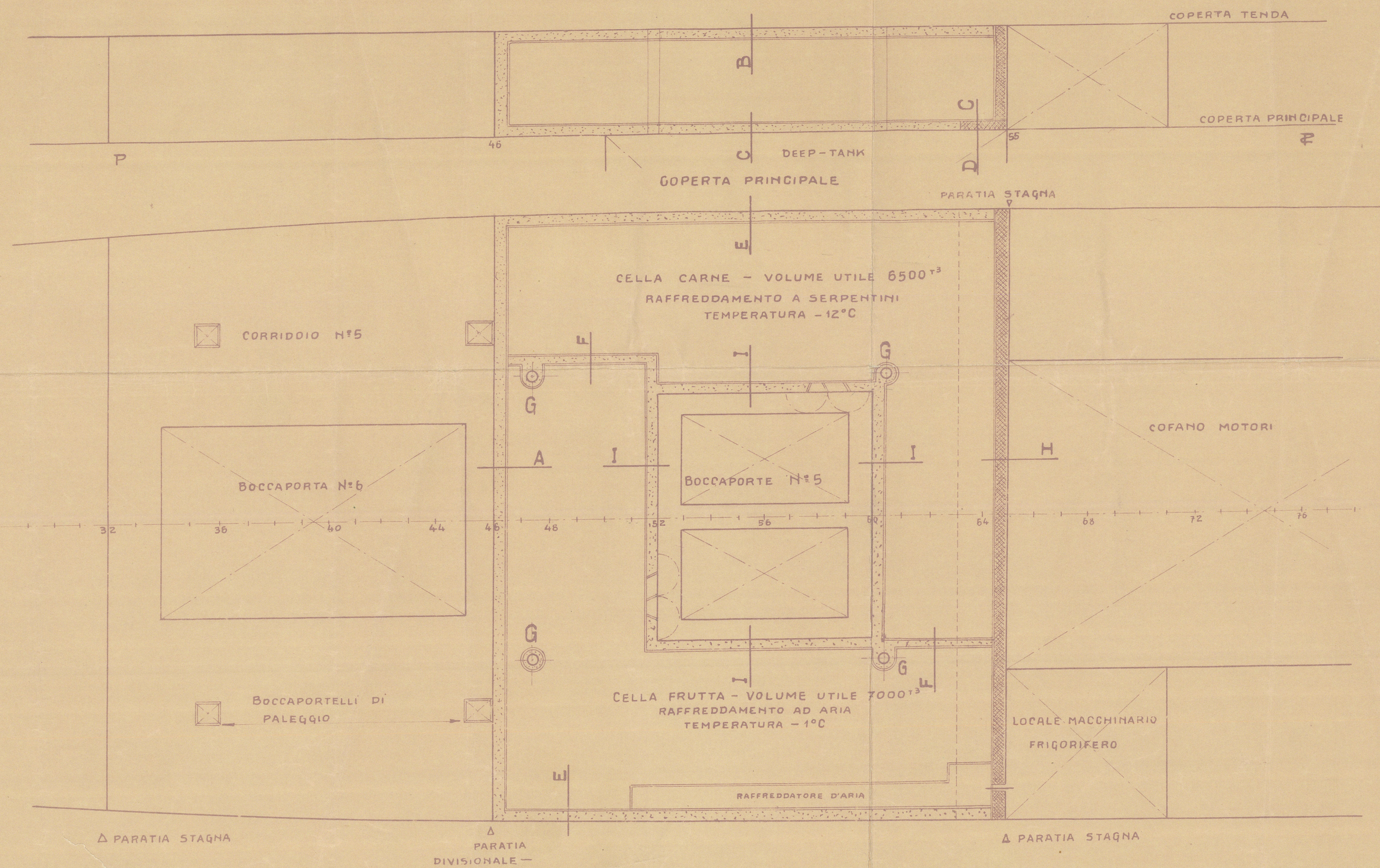
PARTICOLARE C



PARTICOLARE I



SEZIONE LONGITUDINALE



- LEGGNO ABETE, TAVOLE AD INCASTRO
- SUGHERO GRANULATO
- COTONE SILICATO

17-3-26

STABILIMENTO TECNICO TRIESTINO	
CANTIERE S. MARCO	
COSTR. N°	743
DISPOSIZIONE GENERALE DELLE ISOLAZIONI	
DJS. N° M 547	REP.
SSALA:	9-2020 100
DATA:	1-III-26
DISEGNATO	CONTROLLATO
APPROVATO	

Amended plan

Simulation in Tween decks

S.T.T. No. 743 of 'LEME'

RMC No 25723



© 2020

Lloyd's Register
Foundation

003599-003604-0033