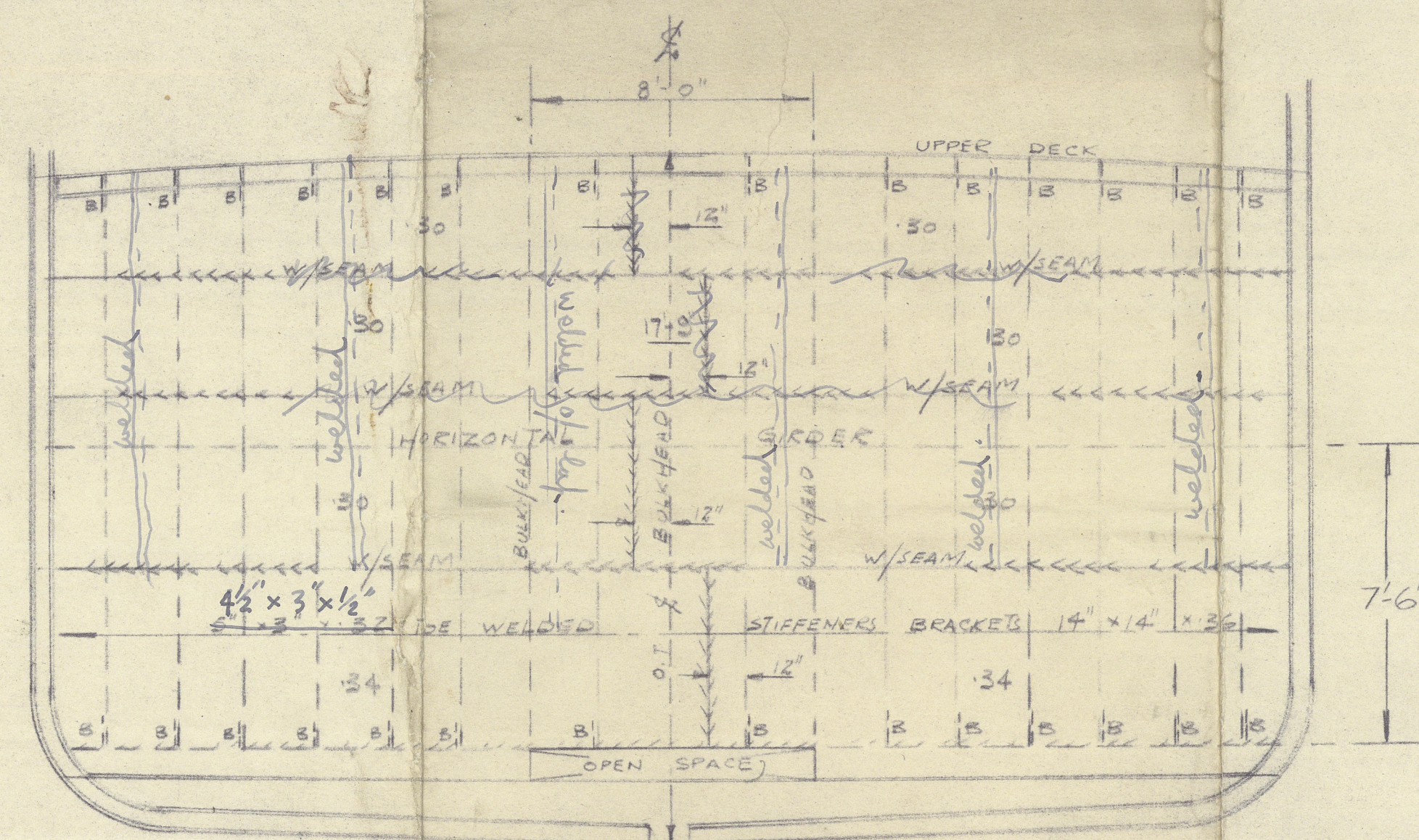
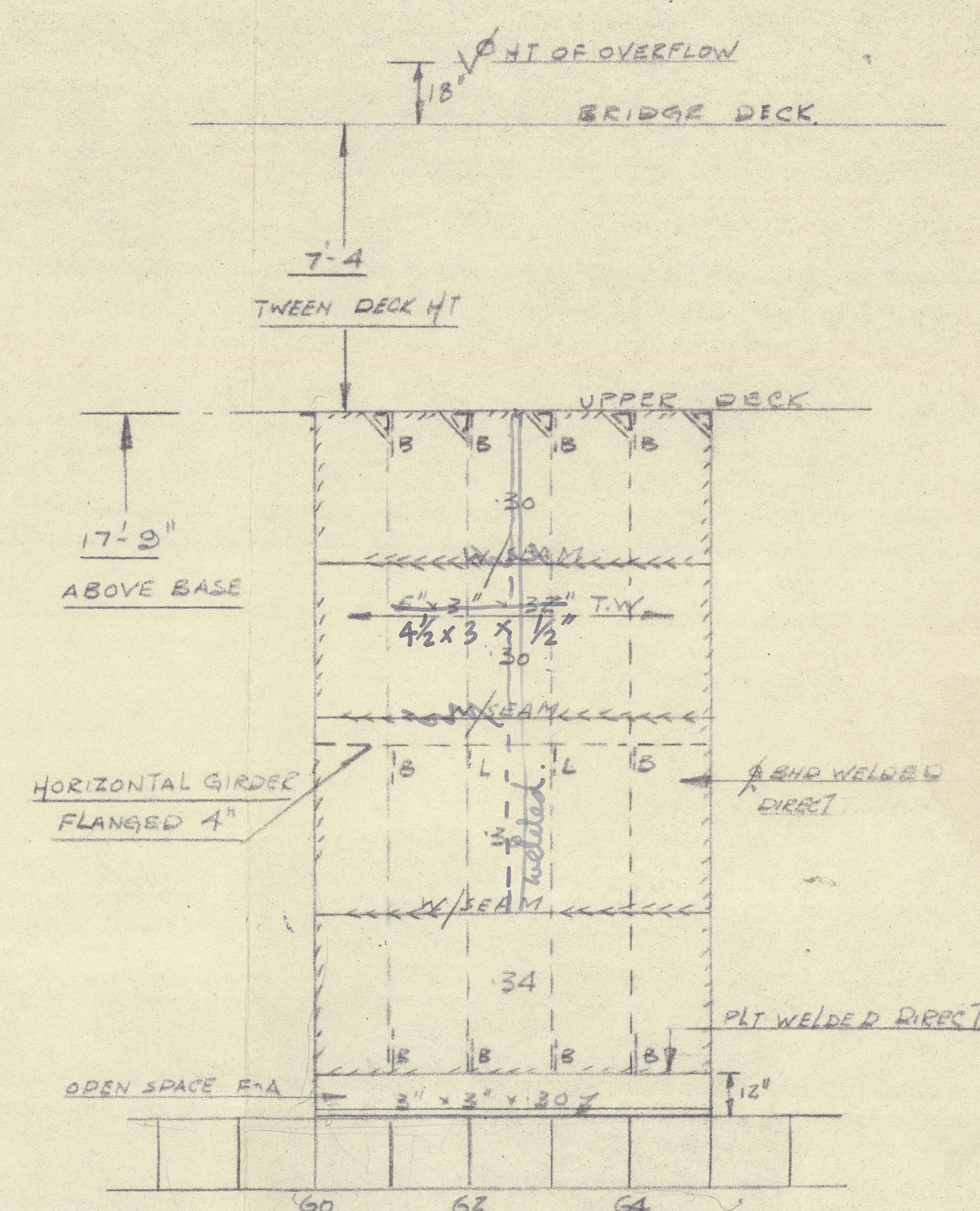
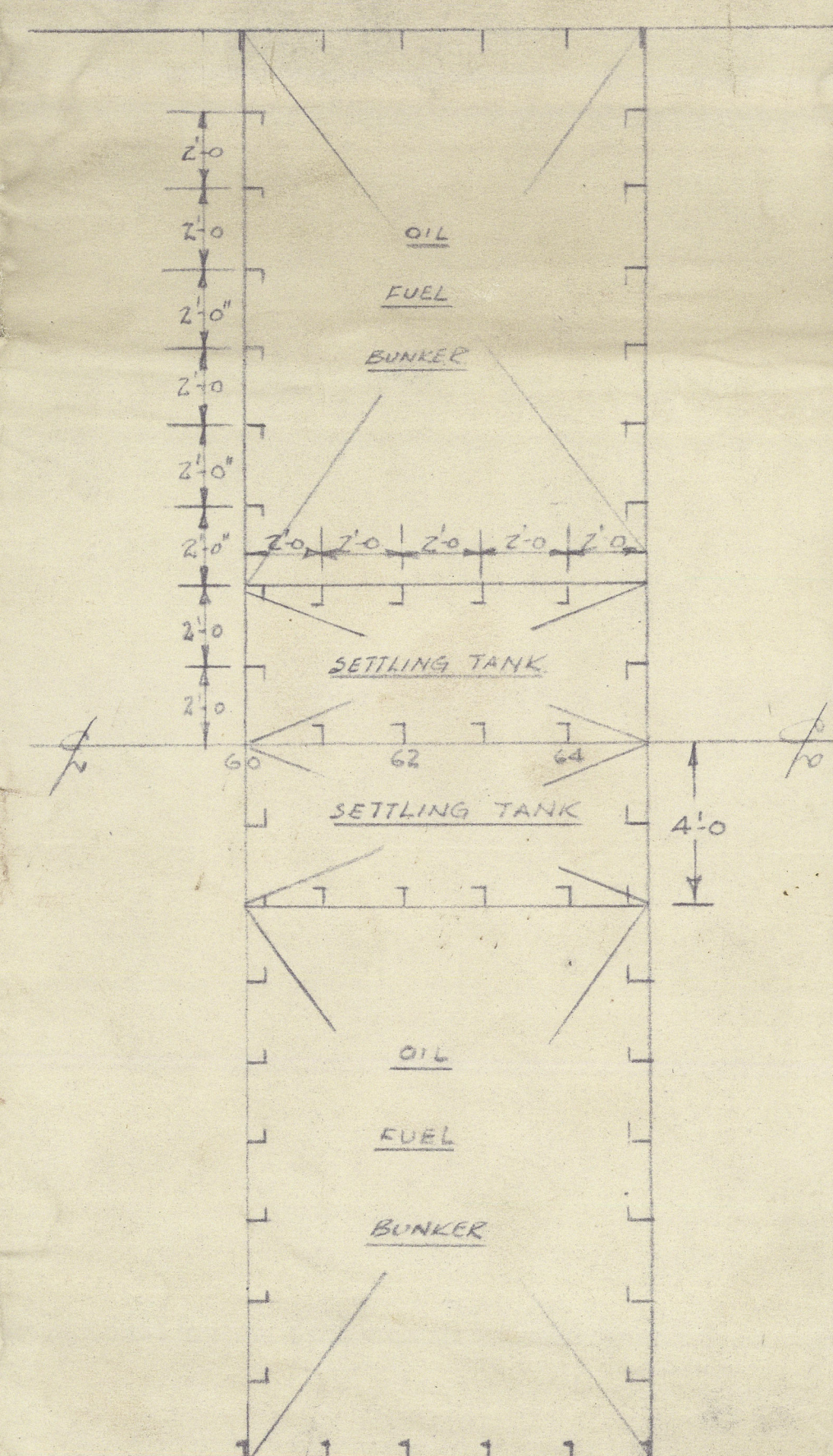


— SS ORCHY —
PROPOSED OIL FUEL BUNKER

SCALE: 1/4" = 1 FOOT

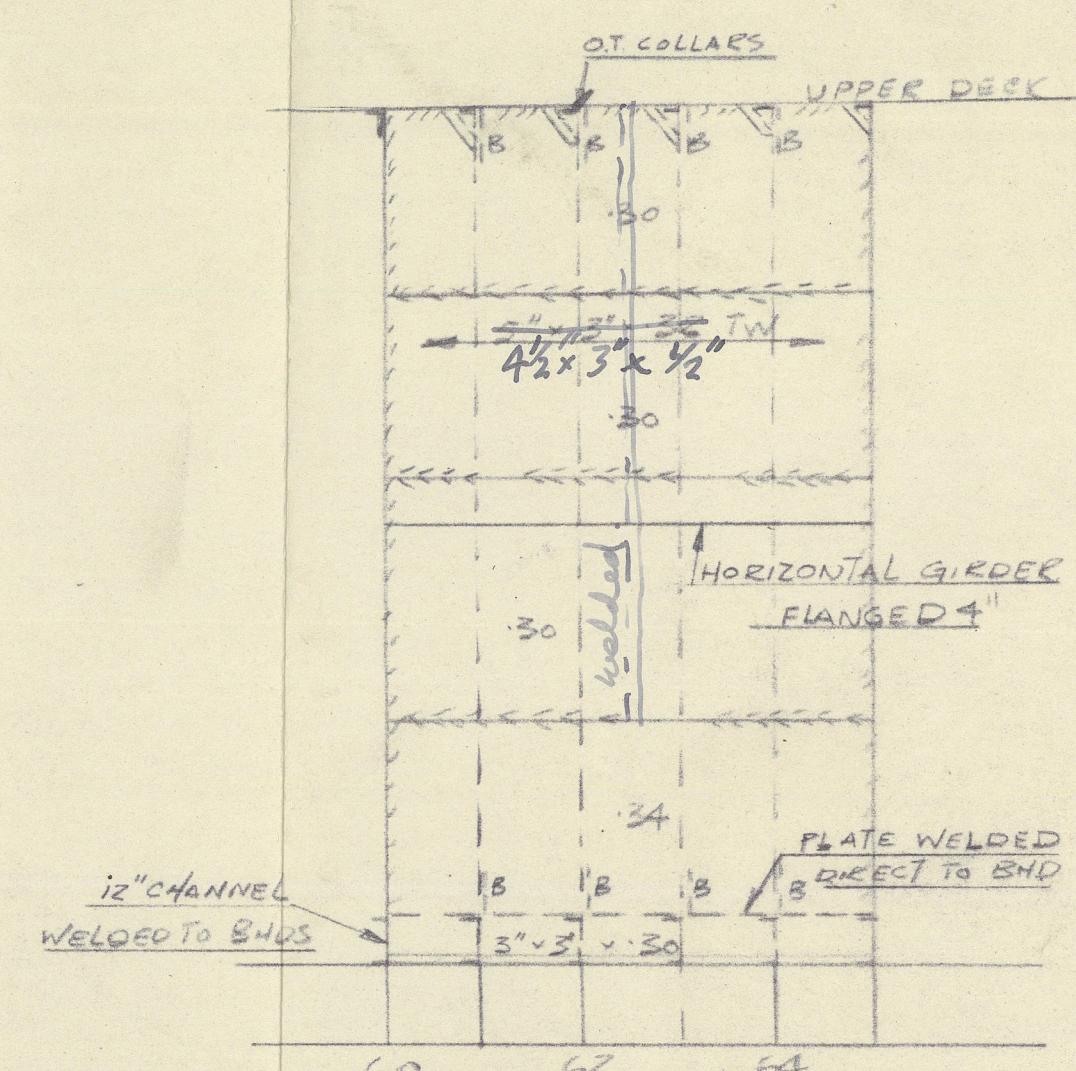


O.T. BULKHEAD FR 60 N.T.S.
 LOOKING FORWARD

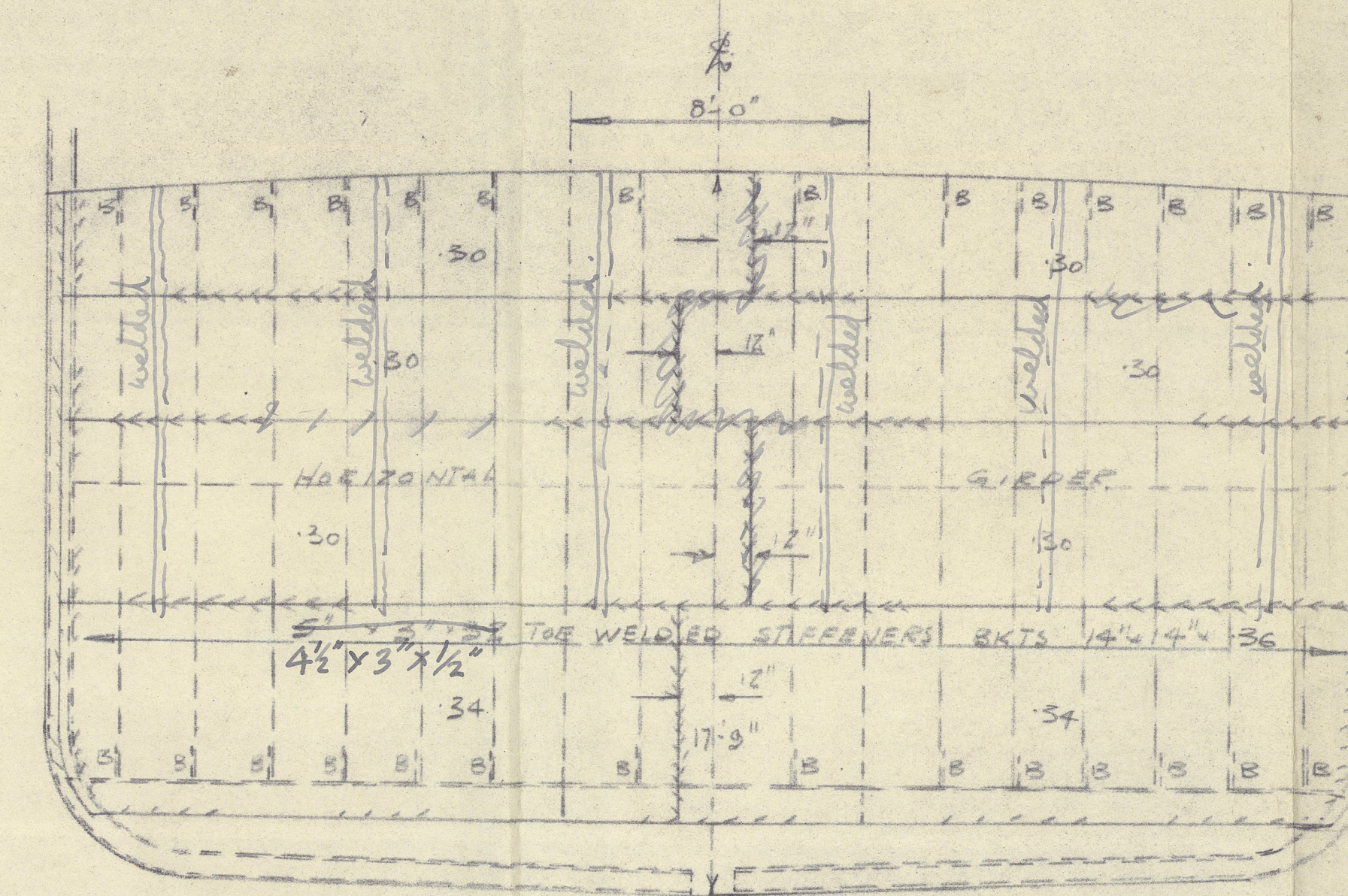


ELEVATION of O.T. BULKHEAD N.T.S.
 LOOKING TO PORT

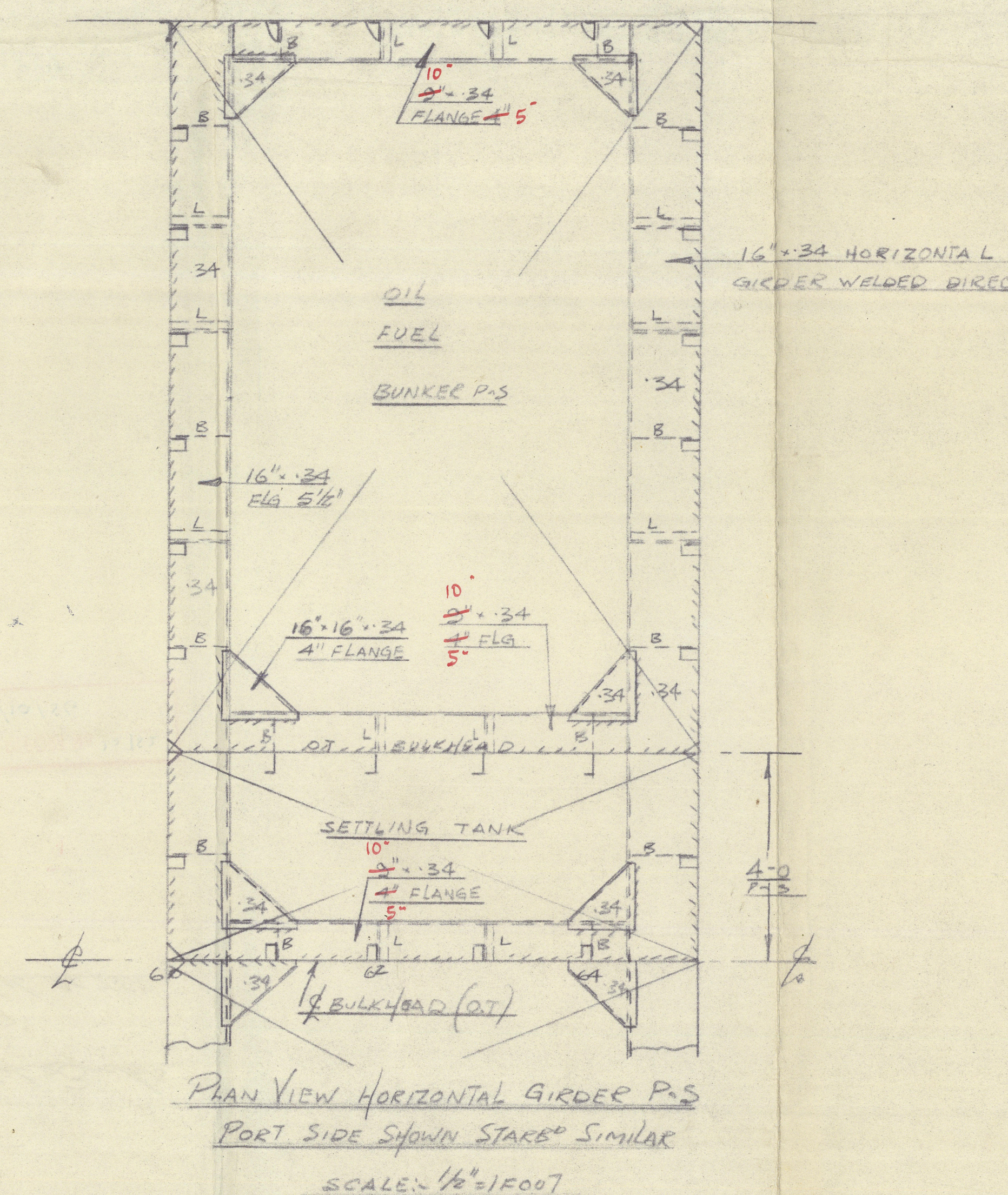
NOTE
 FRAME SPACING 24"
 OVERFLOW 1'-6" ABOVE BRIDGE DECK



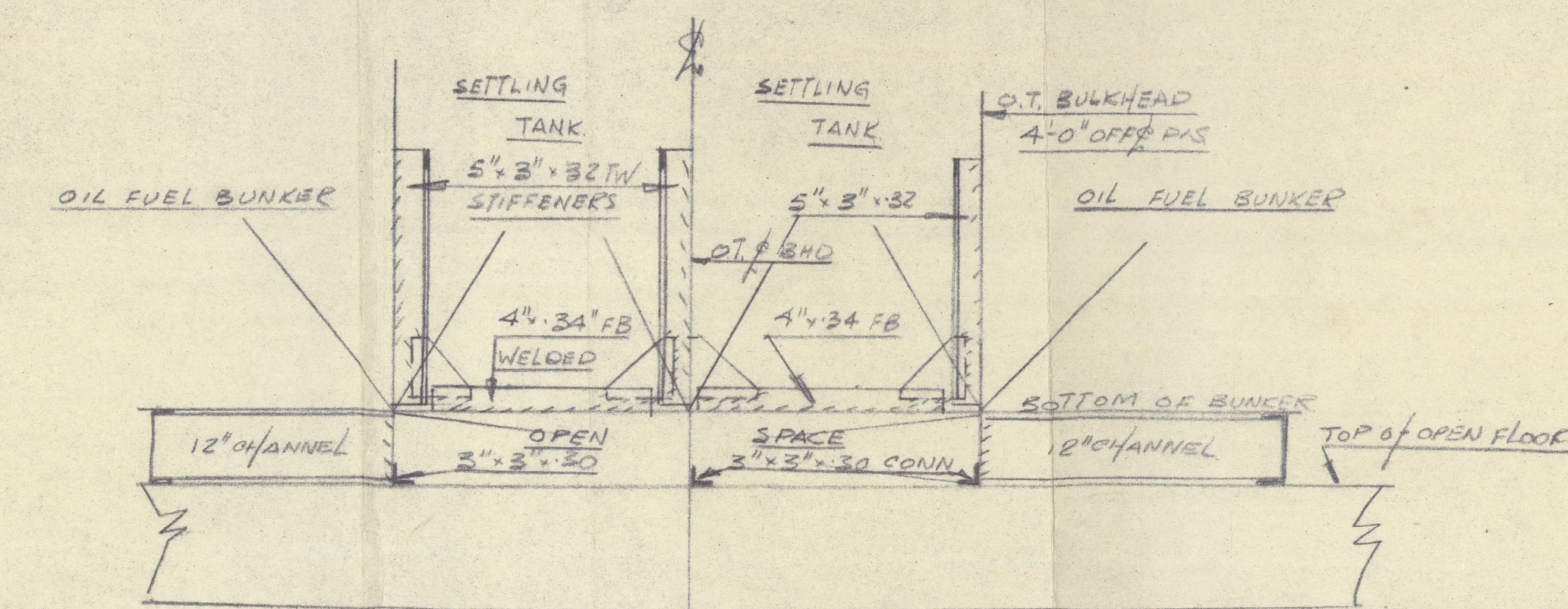
O.T. BULKHEAD 40' OFF P.S.
 STARP SIDE SHOWN PORT SIMILAR



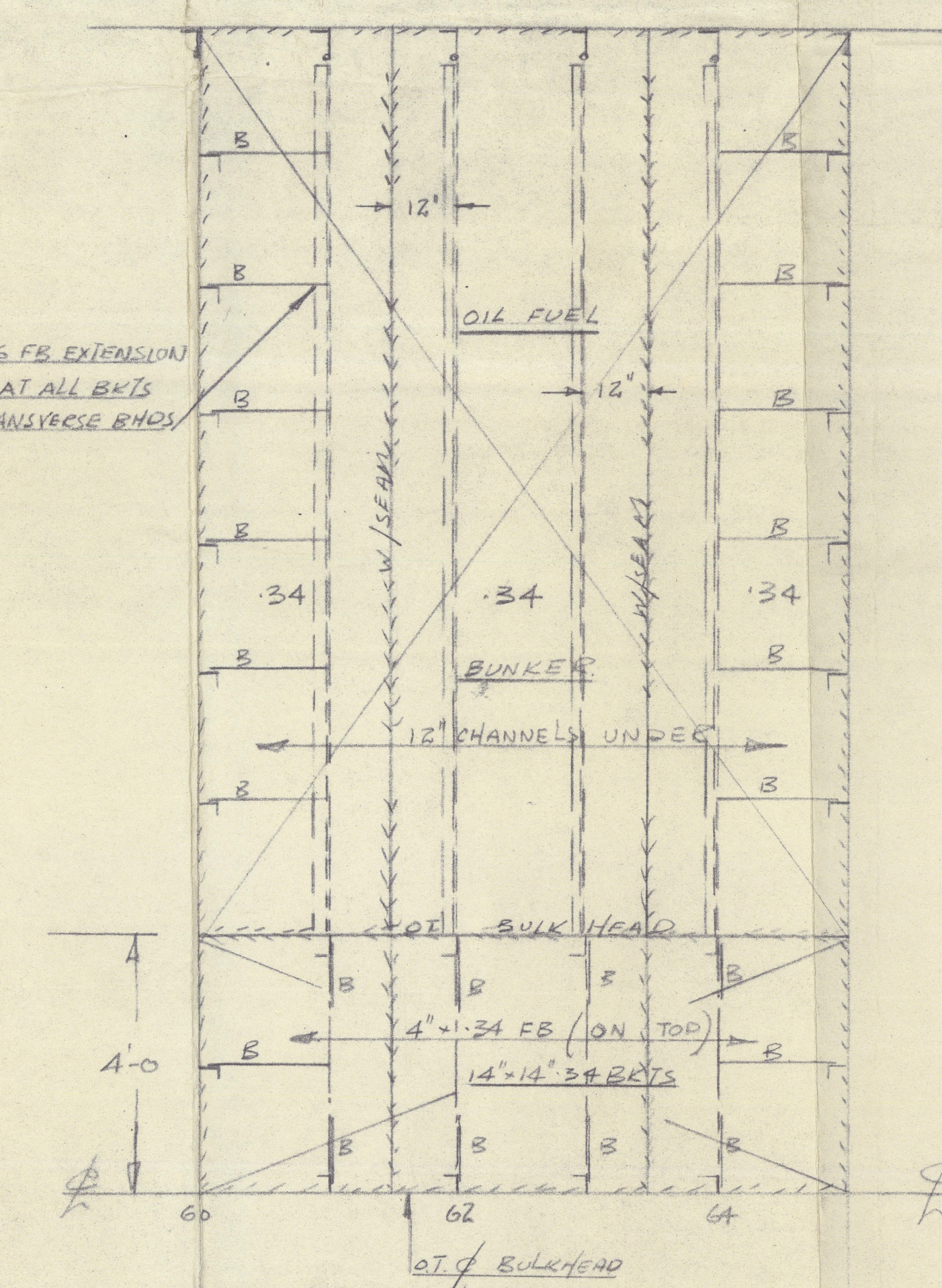
O.T. BULKHEAD 65
 LOOKING AFT



PLAN VIEW HORIZONTAL GIRDER P.S.
 PORT SIDE SHOWN STARP SIMILAR
 SCALE: 1/8" = 1 FOOT



NOTE: OPEN FLOORS TO BE STIFFENED
 TO SURVEYOR'S SATISFACTION
SECTION IN WAY OF SETTLING TANKS
 LOOKING FORWARD



PLAN VIEW OF BOTTOM OF O.T. BUNKER
 SCALE 1/2" = 1 FOOT

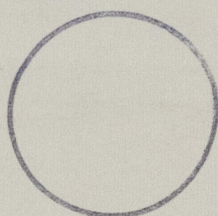
"Orchy"

Refined Oil Fuel Tanks

Greenock Report 25752.

TO ACCOMPANY	<u>Lyle</u>	REPORT No	<u>25752</u>
DATED	<u>10/10/56</u>		

RECORDS DEPT.
LONDON.



© 2020

Lloyd's Register
Foundation

003599-003604-0141