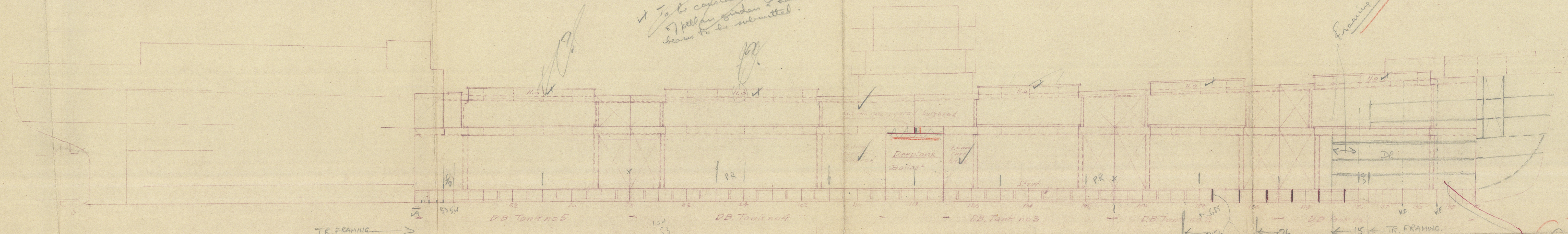


M/S. PARNASOS ex M.T. BUCCINUM

Proposed alteration into a dry cargo carrier

To be considered with plan of ballast girders to be submitted.

Framing in this region?



Doubling upon stringers like 1020

27 Riweted

Main gir. 250x90x11

Floor already fitted on every 2nd for forward of 1st 158.

Main gir. 200x100x16

Part of arrangement to be submitted.

Upper deck

Riweted hatch corner doublings

Riweted hatch corner doublings 16 1/2 mm thick.

10 10 10 10 10 10 10 10 10 10

2nd deck

Intermediate girders in D.B.

Inner bottom

27/11/58

Office

Approved by the
M.T. PARNASOS ex BUCCINUM
Longitudinal section 5/12/58
Proposed alterations
Lloyd's Register
Foundation

003599-003604-0293