

12 SEP 1952

Index No.
(For London Office only).

Lloyd's Register of Shipping.

SURVEYS FOR FREEBOARD.

(CONDITIONS OF ASSIGNMENT.)

No 35264

Ship's Name

M/V "NYON"

Port of Survey

ROTTERDAM

Official Number

Surveyor's Signature

G. J. de Jong

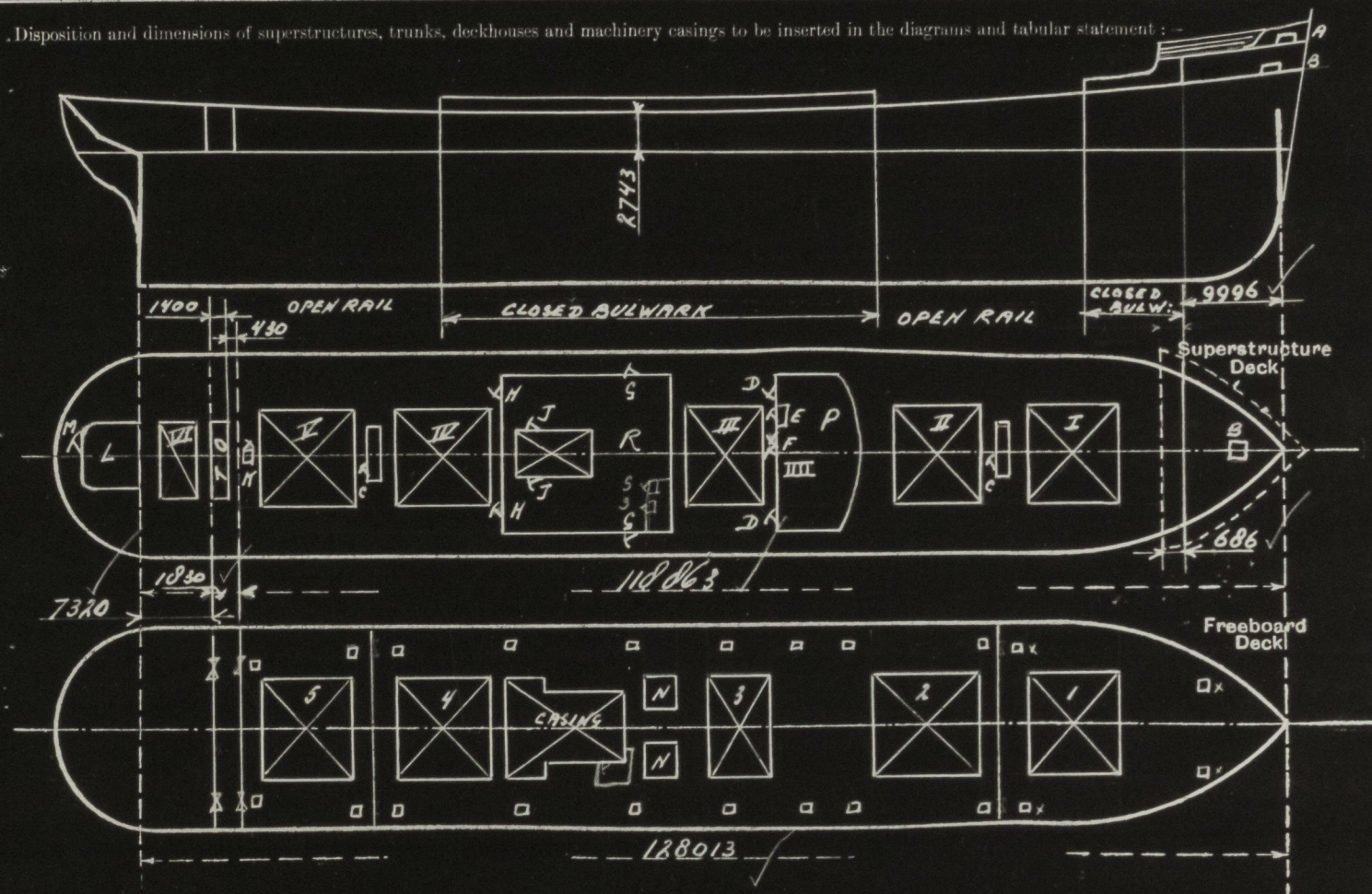
Nationality and Port of Registry

SWISS BALE

Date of Survey

BUILDING.

Disposition and dimensions of superstructures, trunks, deckhouses and machinery casings to be inserted in the diagrams and tabular statement :-



Particulars of Superstructures, Trunks, Casings, Deckhouses.

	Coaming	Plating	Stiffeners	Spacing	End Attachments of Stiffeners	Size of Openings	Height of Sills	Height of Casings
Poop Bulkhead	6 1/2 ✓	6 1/2 ✓	100.90.7	685.	E.W. ✓	1250.950	600 ✓	
Raised Quarter Deck Bulkhead ...	✓							
Bridge, After Bulkhead	6 1/2 ✓	6 1/2 ✓	100.90.7	725	E.W. ✓	1250.950	600 ✓	
Bridge, Forward Bulkhead	✓							
Forecastle Bulkhead (SUPERIMPOSED)	8.	6 1/2 ✓	75.65.7	517	E.W. ✓	1550.1250	240. ✓	
Trunk, Aft	✓							
Trunk, Forward	✓							
Exposed Machinery Casings on Freeboard or Raised Quarter Decks ...								
Exposed Machinery Casings on Superstructure Decks								
Machinery Casings within Superstructures not fitted with Class I Closing Appliances	ENCLOSED IN STEEL DECKHOUSE							
	6.5	6.5 ✓	76.8	710	E.W. ✓	1850.760	150	2745
Deckhouses on Flush Deck Ships ...	150.0	6.5	75.65.9 75.150.6	730	E.W. ✓			

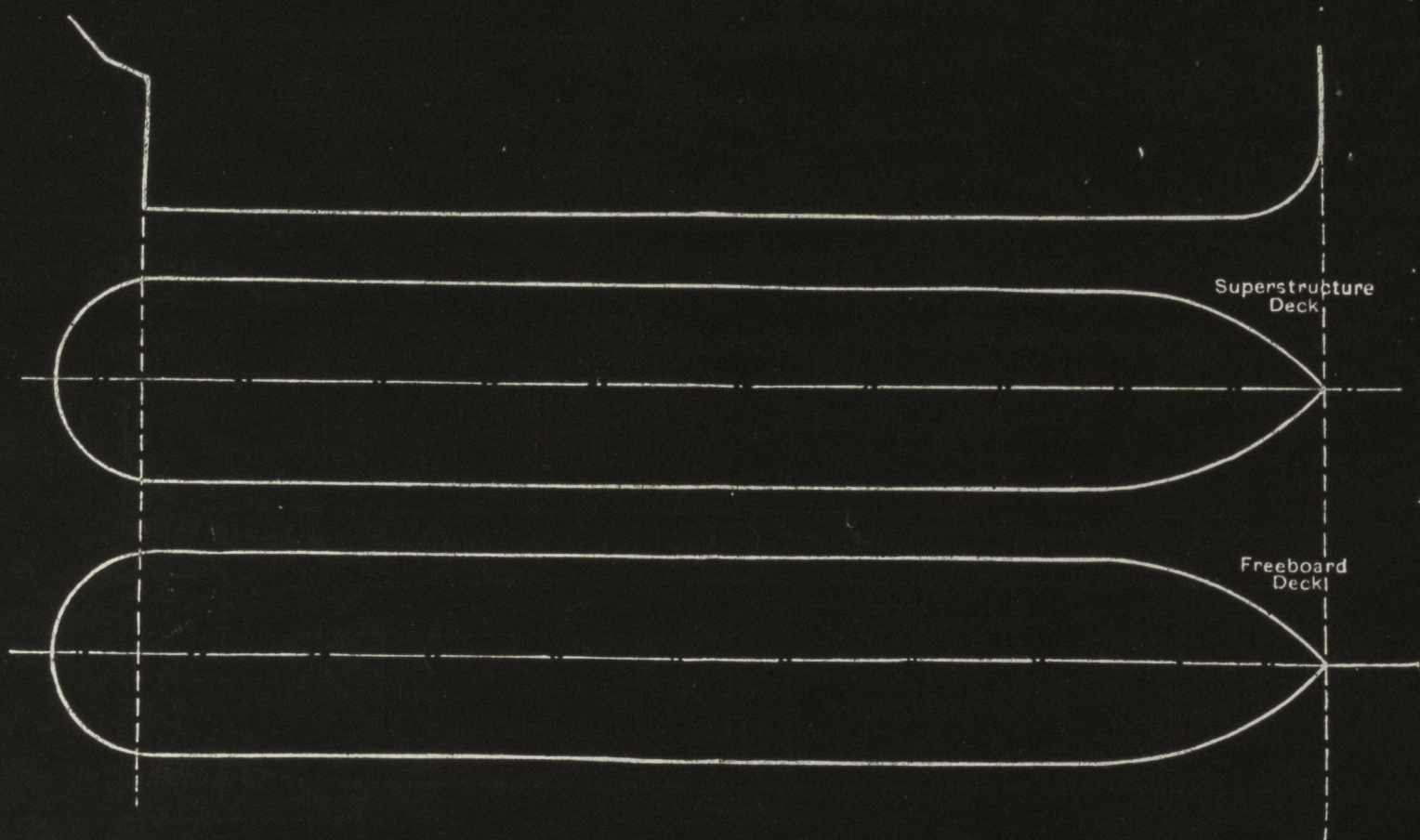
Particulars of Closing Appliances (state if capable of being manipulated from both sides).

Poop Bulkhead	WOODEN SHIFTING BOARDS IN E.W. CHANNELS
Raised Quarter Deck Bulkhead ...	✓
Bridge, After Bulkhead	WOODEN SHIFTING BOARDS IN E.W. CHANNELS.
Bridge, Forward Bulkhead	✓
Forecastle Bulkhead	PORTABLE STEEL PLATE ON HOOK BOLTS NOT PASSING THROUGH BULKHEADS.
Exposed Machinery Casings on Freeboard or Raised Quarter Decks ...	
Exposed Machinery Casings on Superstructure Decks	2 OPENINGS J. 1650.620 SILL 390 mm O.B.S. WITH STEEL DOORS
Machinery Casings within Superstructures not fitted with Class I Closing Appliances	ONE FL. STEEL DOOR. O.B.S. ✓
Deckhouses on Flush Deck Ships ...	PLEASE SEE BACKSIDE



PARTICULARS OF PROTECTION TO OPENINGS, ETC.

The following diagrams should be used to indicate the positions of cargo and coaling hatchways, gangway, cargo and coaling ports, ventilators, companionways, etc., which would affect the seaworthiness of the ship:—



Particulars of fiddley, funnel and ventilator coamings, engine room skylight and other openings in machinery casing tops and their means of closing:—

FIDLEY - FUNNEL VENTILATOR COAMINGS GOOD.
ENGINE ROOM SKYLIGHT OF STEEL WITH STRONG STEEL HINGED FLAPS

Particulars of Flush Bunker Scuttles:— *NONE FITTED.*

Particulars of Companionways:— *ONE STEEL STRONG DECKHOUSE AFT (L) WITH ONE OPENING 1450 x 650 SILL 460 mm WITH FL. STEEL DOOR O.B.S.*
ONE STEEL DECKHOUSE (P) WITH 2 OPENINGS 1020 x 750 SILL 460 mm AND HARDWOOD DOOR O.B.S.
ONE OPENING F. 1510 x 950 SILL 470 mm
ONE OPENING E. 1500 x 620 SILL 460 mm
FL. STEEL PLATE DOOR O.B.S.

Particulars of Ventilators in exposed positions on freeboard and superstructure decks:—

FREE DECK 2 VENT. COAMINGS 920 mm x 250 8 mm THICK
2 " " 920 mm x 500 10 mm "
2 " " 920 mm x 500 10 mm "
2 " " 920 mm x 500 10 mm "
UPPER DECK 2 VENT. COAMINGS 920 mm x 250 8 mm THICK
2 " " 920 mm x 350 10 mm "
6 " " 920 mm x 500 10 mm "
WOODEN PLUGS AND CANVAS COVERS SUPPLIED FOR ALL COAMINGS.

Particulars of Air Pipes in exposed positions on freeboard, raised quarter, or superstructure decks:—

ALL AIRPIPES OF PLANTAINS AND DOUBLE BOTTOM TANKS MIN 460 mm
ABOVE UPPER DECK
ALL AIRPIPES TO OIL FUEL TANKS FITTED WITH WIRE SAUS
WOODEN PLUGS AND CANVAS COVERS SUPPLIED FOR ALL REMAINDER

Particulars of Gangway Cargo and Coaling Ports:—

NONE FITTED.

Particulars of Scuppers and Sanitary Discharge Pipes:—

SCUPPERS IN TONNAGE WELL 2 NON RETURN VALVES 5" DIA. OPERATED FROM UPPER DECK WITH INDICATOR
IN TWEEN DECK SCREEN DOWN VALVES TO HOLD DO.
FOREPEAK DECK AND CHAIN LOCKER DRAINABLE BY HAND PUMP.
ALL SANITARY DISCHARGES ABOVE FREEBOARD DECK FITTED WITH CAST STEEL
NON RETURN VALVES AT SHIPS SIDES.

Particulars of Side Scuttles:—

STRONG STEEL SIDE SCUTTLES IN STEERING HOUSE ONLY FITTED WITH EFF. HINGED DEADLIGHTS.

Vertical distance of Sill of lowest Side Scuttle above top of keel *ABOVE FREEBOARD DECK ONLY.*

Particulars of Guard Rails:— *ON FREE DECK PART OPEN RAIL 1070 mm HIGH WITH 3 RODS SUFF. SUPPORTED.*
ON UPPER DECK PART CLOSED 1070 mm x 6 mm } SUFF. SUPPORTED.
PART OPEN 1070 mm

Particulars of Gangways, Lifelines, etc.:—

NONE FITTED.

Particulars of Freeing Arrangements.

	Length of Bulwark	Height of Bulwark	Size of Freeing Ports	Number each side	Area each side	Rule area each side
After Well ...	<i>CLOSED 41850</i>	<i>1070 x 6</i>	<i>1500 x 230</i>	<i>4</i>	<i>1.30 m²</i>	<i>1.274</i>
	<i>OPEN 44025</i>				<i>+ open rails.</i>	
Forward Well ...	<i>CLOSED 4000</i>	<i>1070 x 6</i>	<i>—</i>	<i>—</i>		
	<i>OPEN 20142</i>					

State position of each freeing port ... (After Well:—

(F. and A. position and height above deck edge) (Forward Well:— *150 mm*)

State whether the freeing ports are fitted with shutters, bars, or rails, and give particulars of such:—

Additional area where sheer is less than standard.



© 2020

Lloyd's Register
Foundation

PARTICULARS OF PROTECTION TO OPENINGS, ETC.

HATCHWAYS ON FREEBOARD AND SUPERSTRUCTURE DECKS.										
SHELTER DECK						FREEBOARD DECK				
Description of Hatchway	I	II	III-IV-V	T.O.	VI	1	2	3	4-5	N.
Dimensions of Hatchway	8900	10060	10060	1400	2741	8897	10850	5400	10050	3070
Height above Deck	700	700	700	200	700	345	345	320	320	230
COAMINGS										
Thickness	11	11	11	12	11	10	10	10	10	12
Stiffeners	250 x 90 x 11				250 x 90 x 11					
Brackets, Stays	170 x 9				170 x 9					
HATCH BEAMS										
Number	5	5	5	-	1	5	5	3	5	-
Spacing	1483	1693	1693	-	1371	1499	1022	1302	1693	-
Scantling and Sketch	250.10 460.11	260.20 460.12	200.12 405.12	200.16 381.0	200.16 265.23	250.23 560.12	250.23 560.12	165.23 510.12	230.23 510.12	-
Bearing Surface	90	90	90	7	90	90	90	90	90	-
FORE AND AFTERS										
Number										
Spacing										
Unsupported Lengths										
Scantling and Sketch										
Bearing Surface										
HATCH COVERS										
Material					PINE					
Thickness					73					
How fitted					F-A					
Bearing Surface					100					
Spacing of Cleats					NOT EXCEEDING 610 mm					
Number of Tarpaulins					TWO					

*Are wood fore and afters steel shod at all bearing surfaces? ☒
 Are battens and wedges efficient and in good condition? ☒ YES
 Are tarpaulins in good condition and in accordance with rule requirements? ☒ YES
 Are lashings provided in accordance with rule requirements? ☒ YES

COVER STEFFNS
 150x85 SPACED
 750 mm APART

100% OILTIGHT STEEL
 HATCH COVERS
 WITH TUGGLES
 440 mm APART

Particulars of any special features:—

ON FLE DECK ONE HATCHWAY (A) 1050 x 800 x 610 mm HIGH WITH W.T. STEEL FL. COVER AND TUGGLES.
 IN FLE SPACE " (B) 1350 x 850 x 460 mm HIGH WOODEN COVERS-TARPAULINS CLEATS ETC. AS PER RULE
 IN MAST DECK HOUSE DOOR OPENING (C) GIVING ACCESS TO HOLDS 1530 x 650
 SILL 460 mm WITH FL. STEEL DOOR OPERABLE BOTH SIDES.
 IN DECK HOUSE (R) 2 OPENINGS (G) 1860 x 750 SILL 180 mm WITH PLATE STEEL DOOR O.B.S.
 2 " (H) 1850 x 750 SILL 170 mm " HARD WOOD DOOR "
 2 ESCAPE TRUNKS (S) 1570 x 600 SILL 460 mm " FL. STEEL DOORS "
 1 ESCAPE TRUNK (K) 1460 x 600 SILL 460 mm " DO DO
 ON FREE BOARD DECK 18 TRIMMING HATCHES (Q) 610 x 610 x 230 mm WITH W.T. STEEL FL. COVERS AND TUGGLES
 4 " (Z) 500 x 760 x 230 mm DO DO

Endorsement at first survey and at surveys for renewal of Certificate:—

The fittings and appliances are in accordance with the particulars shown on this form (or as now modified) and are in good condition.

25613352



© 2020

Lloyd's Register
Foundation