

# Lloyd's Register of Shipping.

## SURVEYS FOR FREEBOARD.

(CONDITIONS OF ASSIGNMENT.)

Index No. \_\_\_\_\_  
(For London Office only).

*Nº 35264*

Ship's Name *M/V "NYON"*

Port of Survey *ROTTERDAM*

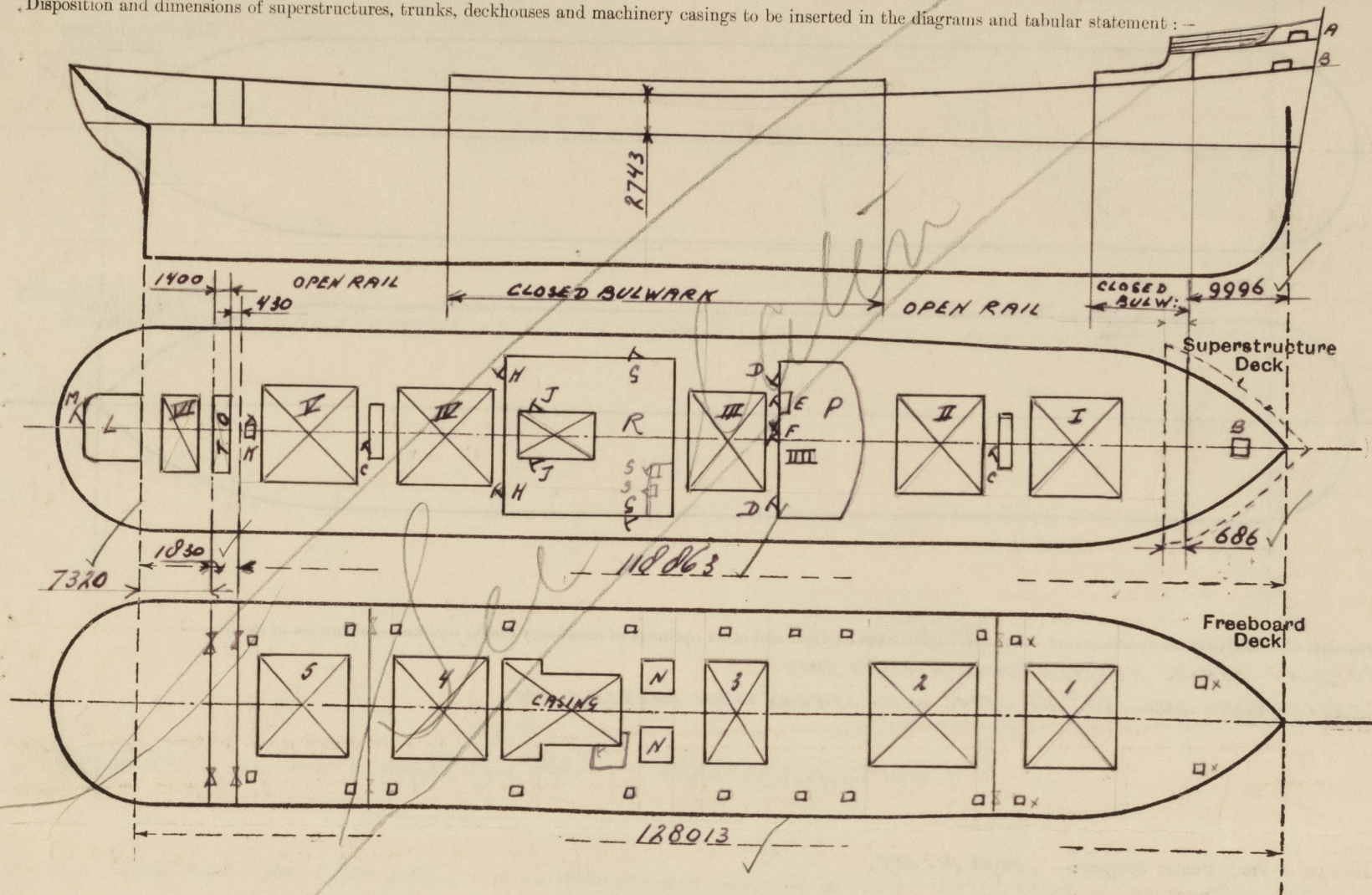
Official Number \_\_\_\_\_

Surveyor's Signature *G. J. de Jong*

Nationality and Port of Registry *SWISS BALE*

Date of Survey *BUILDING*

Disposition and dimensions of superstructures, trunks, deckhouses and machinery casings to be inserted in the diagrams and tabular statement:—



Particulars of Superstructures, Trunks, Casings, Deckhouses.

	Coaming	Plating	Stiffeners	Spacing	End Attachments of Stiffeners	Size of Openings	Height of Sills	Height of Casings
Poop Bulkhead ...	6 1/2 ✓	6 1/2 ✓	100.90.7 ✓	685	E.W. ✓	1250.950	600 ✓	
Raised Quarter Deck Bulkhead ...	✓							
Bridge, After Bulkhead ...	6 1/2 ✓	6 1/2 ✓	100.90.7 ✓	725	E.W. ✓	1250.950	600 ✓	
Bridge, Forward Bulkhead ...	✓							
Forecastle Bulkhead (SUPERIMPOSED)	8.	6 1/2 ✓	75.65.7 ✓	517	E.W. ✓	1550.1250	240. ✓	
Trunk, Aft ...	✓							
Trunk, Forward ...	✓							
Exposed Machinery Casings on Freeboard or Raised Quarter Decks ...								
Exposed Machinery Casings on Superstructure Decks ...								
Machinery Casings within Superstructures not fitted with Class I Closing Appliances ...	ENCLOSED IN STEEL DECKHOUSE							
	6 5	6 5 ✓	76.8 ✓	710	E.W.	1050.760	150	2743
Deckhouses on Flush Deck Ships ...	150.0	6 5	75.65.9 ✓ 75.150.6	730	E.W.			

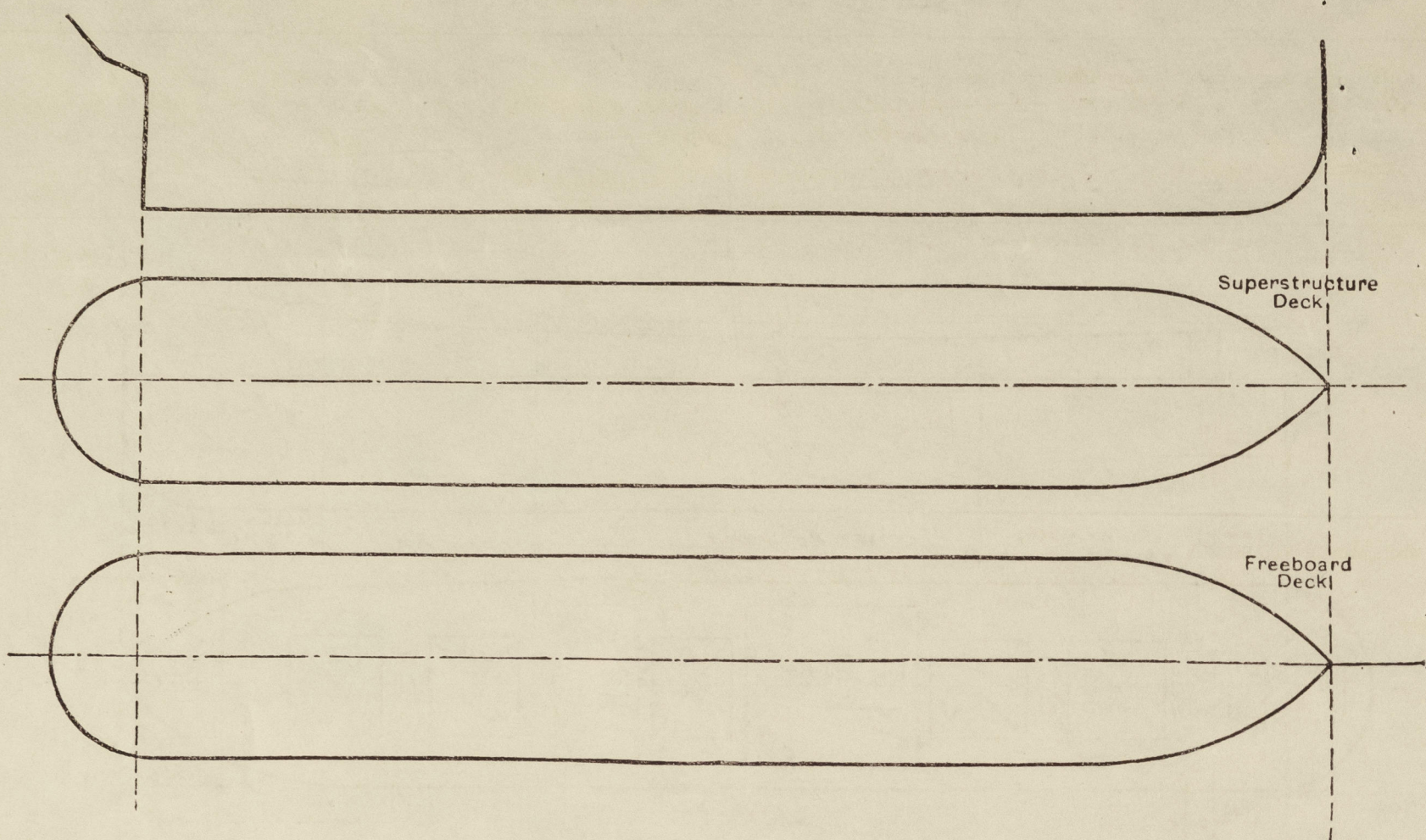
Particulars of Closing Appliances (state if capable of being manipulated from both sides).

Poop Bulkhead ...	WOODEN SHIFTING BOARDS IN E.W. CHANNELS
Raised Quarter Deck Bulkhead ...	✓
Bridge, After Bulkhead ...	WOODEN SHIFTING BOARDS IN E.W. CHANNELS.
Bridge, Forward Bulkhead ...	✓
Forecastle Bulkhead ...	PORTABLE STEEL PLATE ON HOONBOLTS NOT PASSING THROUGH BULKHEAD.
Exposed Machinery Casings on Freeboard or Raised Quarter Decks ...	✓
Exposed Machinery Casings on Superstructure Decks ...	2 OPENINGS J. 1050.620 SILL 390 mm O.B.S. WITH STEEL DOORS
Machinery Casings within Superstructures not fitted with Class I Closing Appliances ...	ONE FL. STEEL DOOR. O.B.S. ✓
Deckhouses on Flush Deck Ships ...	PLEASE SEE BACKSIDE.



# PARTICULARS OF PROTECTION TO OPENINGS, ETC.

The following diagrams should be used to indicate the positions of cargo and coaling hatchways, gangway, cargo and coaling ports, ventilators, companionways, etc., which would affect the seaworthiness of the ship:—



Particulars of fiddle, funnel and ventilator coamings, engine room skylight and other openings in machinery casing tops and their means of closing:—

FIDLEY - FUNNEL VENTILATOR COAMINGS GOOD.  
ENGINE ROOM SKYLIGHT OF STEEL WITH STRONG STEEL HINGED FLAPS

Particulars of Flush Bunker Scuttles:— NONE FITTED.

Particulars of Companionways:— ONE STEEL STRONG DECKHOUSE AFT (L) WITH ONE OPENING 1450 x 650 SILL 460 mm WITH FL. STEEL DOOR O.B.S.  
ONE STEEL DECKHOUSE (P) WITH 2 OPENINGS D. 1820 x 750 SILL 460 mm AND HARDWOOD DOOR O.B.S.  
ONE OPENING F. 1510 x 950 SILL 470 mm  
ONE OPENING E. 1500 x 620 SILL 460 mm  
DO FL. STEEL PLATE DOOR O.B.S.

Particulars of Ventilators in exposed positions on freeboard and superstructure decks:—

FELEDECK 2 VENT. COAMINGS 920 mm x 250 8 mm THICK  
2 " " 920 mm x 500 10 mm "  
2 4" GOOSENECKS 920 mm HIGH.  
UPPERDECK 2 VENT. COAMINGS 920 mm x 250 8 mm THICK  
2 " " " " 350 10 mm "  
6 " " " " 500 " "  
WOODEN PLUGS AND CANVAS COVERS SUPPLIED FOR ALL COAMINGS.

Particulars of Air Pipes in exposed positions on freeboard, raised quarter, or superstructure decks:—

ALL AIRPIPES OF PEAKTANKS AND DOUBLE BOTTOMTANKS MIN 460 mm  
ABOVE UPPERDECK  
ALL AIRPIPES TO OILFUELTANKS FITTED WITH WIRE GAUGE CANVAS COVERS  
WOODEN PLUGS AND CANVAS COVERS SUPPLIED FOR ALL REMAINDER

Particulars of Gangway Cargo and Coaling Ports:—

NONE FITTED.

Particulars of Scuppers and Sanitary Discharge Pipes:—

SCUPPERS IN TONNAGEWELL 2 NON RETURN VALVES 5" DIA. OPERATED FROM UPPERDECK WITH INDICATOR IN TWEENDECK SCRENDOWN VALVES TO HOLD DO.  
FOREPEAK DECK AND CHAINLOCKER DRAINABLE BY HANDPUMP.  
ALL SANITARY DISCHARGES ABOVE FREEBOARD DECK FITTED WITH CAST STEEL NON RETURN VALVES AT SHIPS SIDES.

Particulars of Side Scuttles:—

STRONG STEEL SIDE SCUTTLES IN STEERINGHOUSE ONLY FITTED WITH EFF. HINGED DEADLIGHTS.

Vertical distance of Sill of lowest Side Scuttle above top of keel ABOVE FREEBOARD DECK ONLY.

Particulars of Guard Rails:— ON FELEDECK PART OPEN RAIL 1070 mm HIGH WITH 3 RODS SUFF SUPPORTED.  
ON UPPERDECK PART CLOSED 1070 mm x 6 mm } SUFF. SUPPORTED.  
PART OPEN 1070 mm

Particulars of Gangways, Lifelines, etc.:—

NONE FITTED.

## Particulars of Freeing Arrangements.

		Length of Bulwark	Height of Bulwark	Size of Freeing Ports	Number each side	Area each side	Rule area each side
After Well	CLOSED	41850	1070 x 6	1500 x 230	4	1.30 m <sup>2</sup>	1.274
	OPEN	44025				+ open rails.	
Forward Well	CLOSED	4000	1070 x 6	—	—	—	
	OPEN	28142					

State position of each freeing port ...

(F. and A. position and height above deck edge) After Well:—  
Forward Well:— 150 mm.

State whether the freeing ports are fitted with shutters, bars, or rails, and give particulars of such:—

Additional area where sheer is less than standard.



PARTICULARS OF PROTECTION TO OPENINGS, ETC.

HATCHWAYS ON FREEBOARD AND SUPERSTRUCTURE DECKS.											
SHELTER DECK						FREEBOARD DECK					
Description of Hatchway	I	II	III-IV-V	T.O.	VI	1	2	3	4-5	N.	
Dimensions of Hatchway	8900 x 7000	10060 x 7000	10060 x 7000	1400 x 5000	2742 x 5000	8897 x 7000	10030 x 7000	5400 x 7000	10050 x 7000	3070 x 3030	
COAMINGS	Height above Deck ... 700 x	700 x	700 x	200 x	700 x	345 x	345 x	320 x	320 x	230 x	
	Thickness ... 11 x	11	11	12	11	10	10	10	10	12	
	Sides ...										
	Ends ...										
	Stiffeners ...	250 x 90 x 11			250 x 90 x 11						
	Brackets, Stays ...	170 x 9			170 x 9						
HATCH BEAMS	Number ... 5	5	5	-	1	5	5	3	5	-	
	Spacing ... 1403	1693	1693	-	1371	1499	1022	1302	1693	-	
	Scantling and Sketch ...	250.10	260.20	200.12	200.16	265.23	250.23	465.23	230.23	-	
		460.11	460.12	405.12	301.0	500.12	500.12	510.12	510.12	-	
		250.18	260.20	200.20	200.16	265.23	250.23	465.23	230.23	-	
	Bearing Surface ...	90	90	90	90	90	90	90	90		
FORE AND AFTERS	Number ...										
	Spacing ...										
	Unsupported Lengths ...										
	Scantling* and Sketch ...										
	Bearing Surface ...										
HATCH COVERS	Material ...				PINE						
	Thickness ...				73						
	How fitted ...				F-A						
	Bearing Surface ...				100						
Spacing of Cleats											
Number of Tarpaulins											
*Are wood fore and afters steel shod at all bearing surfaces? YES											
Are battens and wedges efficient and in good condition? YES											
Are tarpaulins in good condition and in accordance with rule requirements? YES											
Are lashings provided in accordance with rule requirements? YES											

Particulars of any special features:-

ON FLE DECK ONE HATCHWAY (A) 1050 x 800 x 610 mm HIGH WITH W.T. STEEL FL. COVER AND Toggles.  
 IN FLE SPACE " (B) 1350 x 850 x 460 mm HIGH WOODEN COVERS-TARPAULINS CLEATS ETC. AS PER RULE  
 IN MAST DECK HOUSE DOOR OPENING (C) GIVING ACCESS TO HOLDS 1530 x 650  
 SILL 460 mm WITH FL. STEEL DOOR OPERABLE BOTH SIDES.  
 IN DECK HOUSE (R) 2 OPENINGS (G) 1860 x 750 SILL 180 mm WITH PLATE STEEL DOOR O.B.S.  
 2 " (H) 1850 x 750 SILL 170 mm " HARD WOOD DOOR "  
 2 ESCAPE TRUNKS (S) 1570 x 600 SILL 460 mm " FL. STEEL DOORS "  
 1 ESCAPE TRUNK (K) 1460 x 600 SILL 460 mm " DO DO  
 ON FREE BOARD DECK 18 TRIMMING HATCHES (D) 610 x 610 x 230 mm WITH W.T. STEEL FL. COVERS AND Toggles  
 4 " (L) 500 x 760 x 230 mm " DO DO

Endorsement at first survey and at surveys for renewal of Certificate:-

The fittings and appliances are in accordance with the particulars shown on this form (or as now modified) and are in good condition.

2561 435 21



© 2020

Lloyd's Register  
Foundation