

To Lloyd's 100 A1. Class for Towing Services.

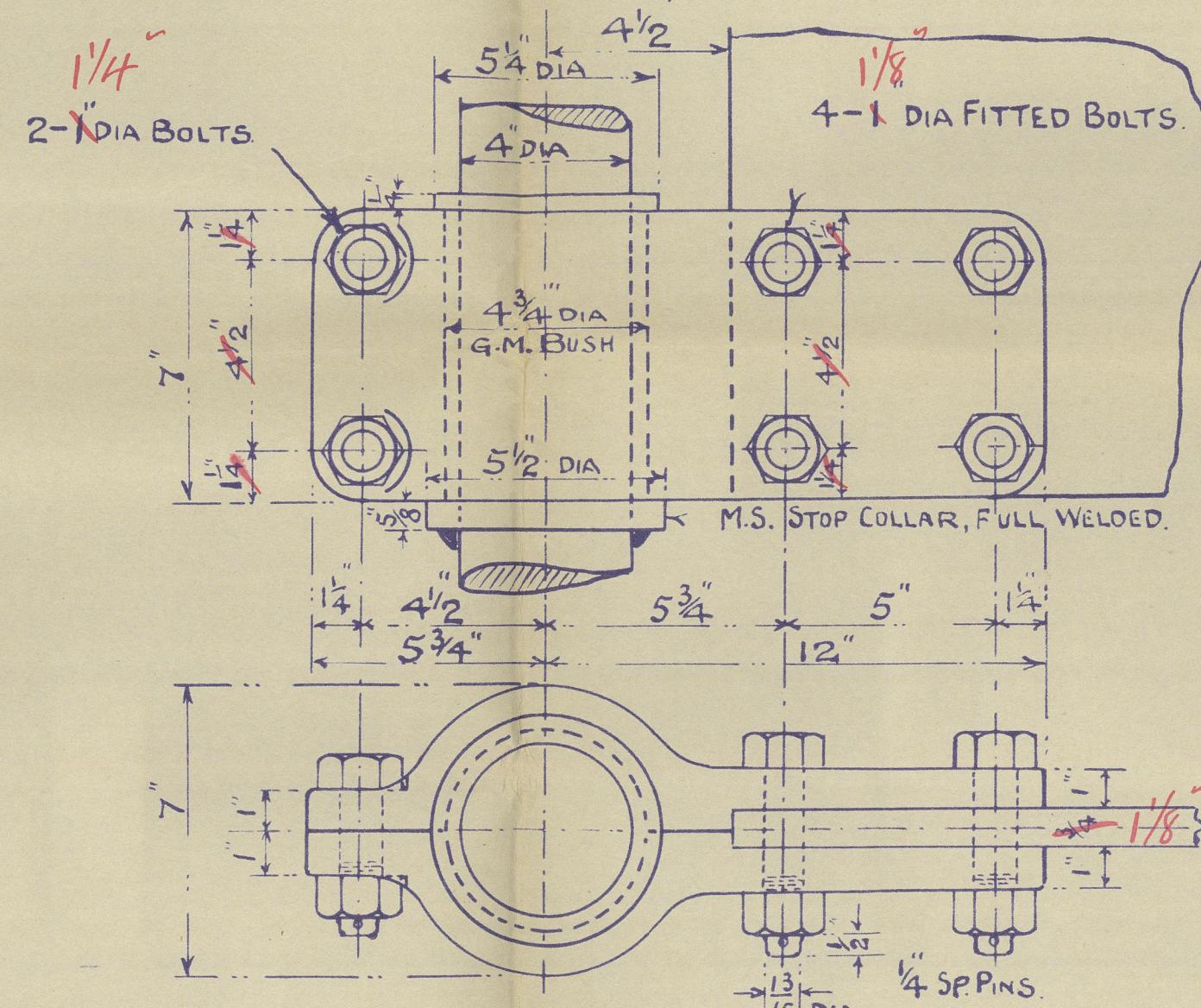
MATERIAL:- FORGED SCRAP IRON OR SCRAP STEEL.

SPEED 9.5 KNOTS.

11" 16 DIA STEERING CHAINS.

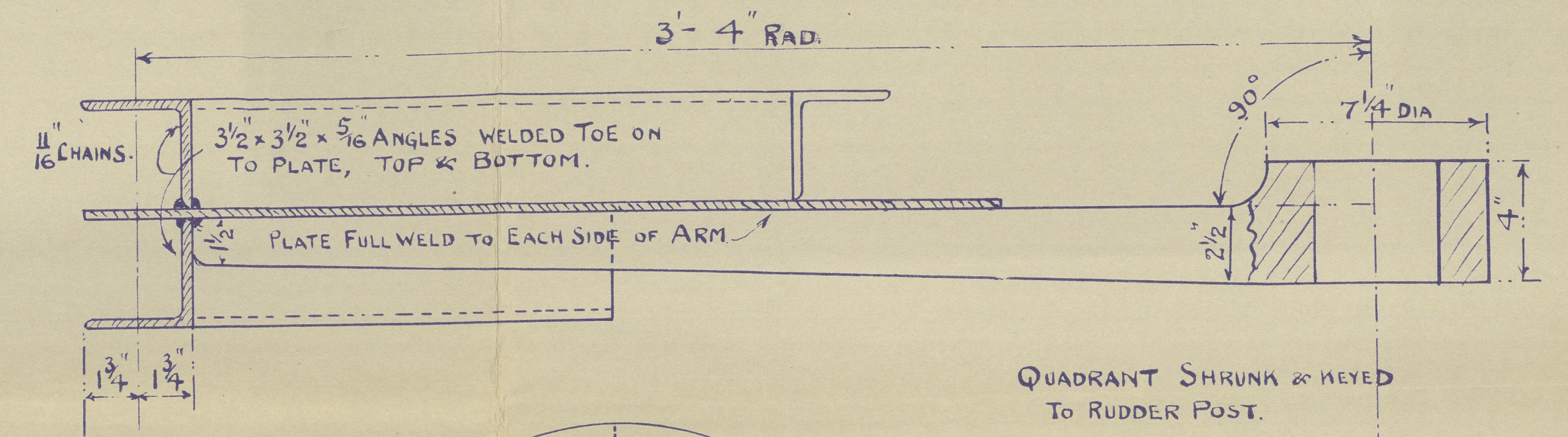
3/4" " " RODS.

frame cut at centre line and fin plate full welded to floor.

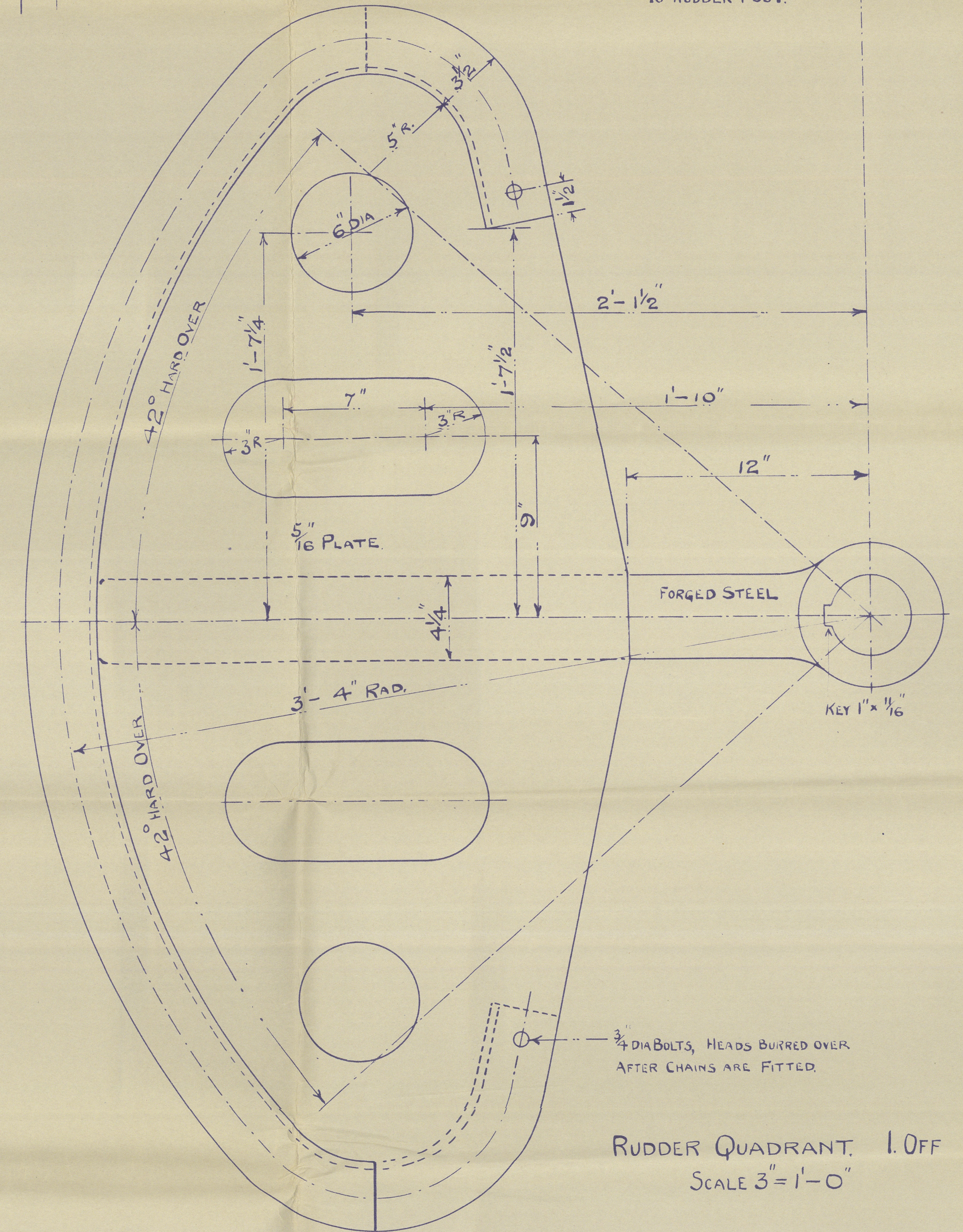


SPLIT GUDGEON. 1. OFF

FORGED STEEL
SCALE 3"=1'-0"

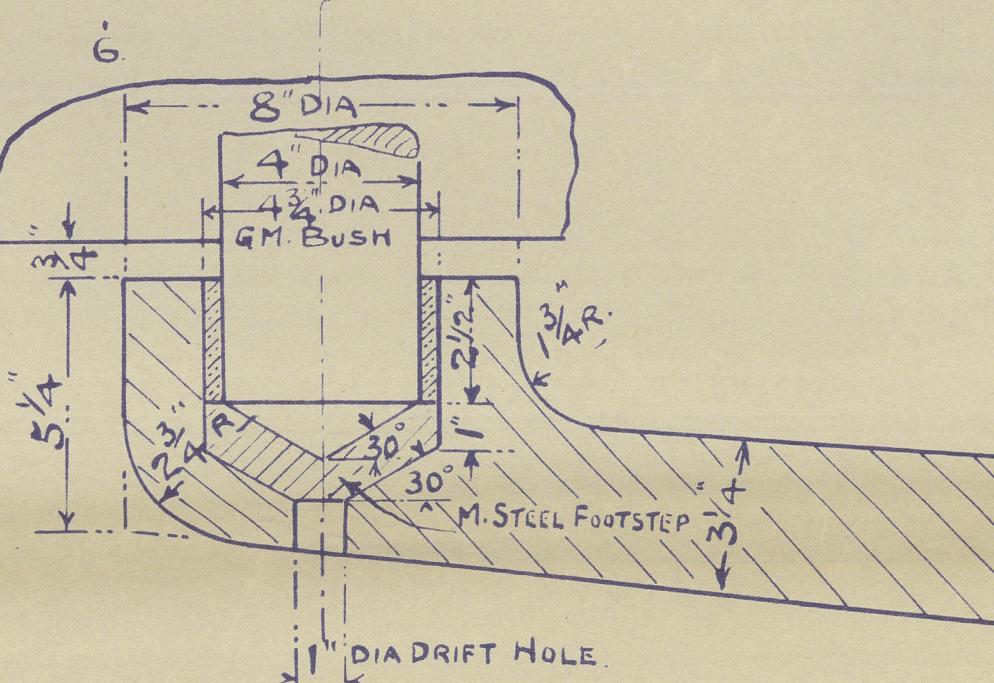
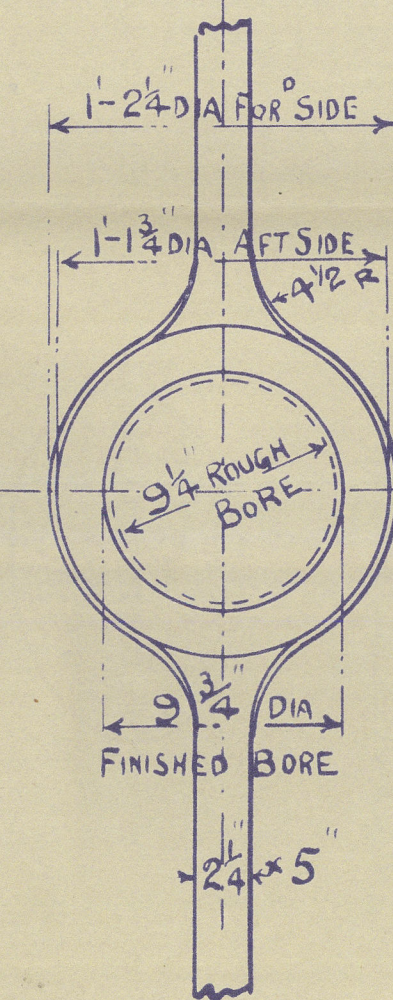
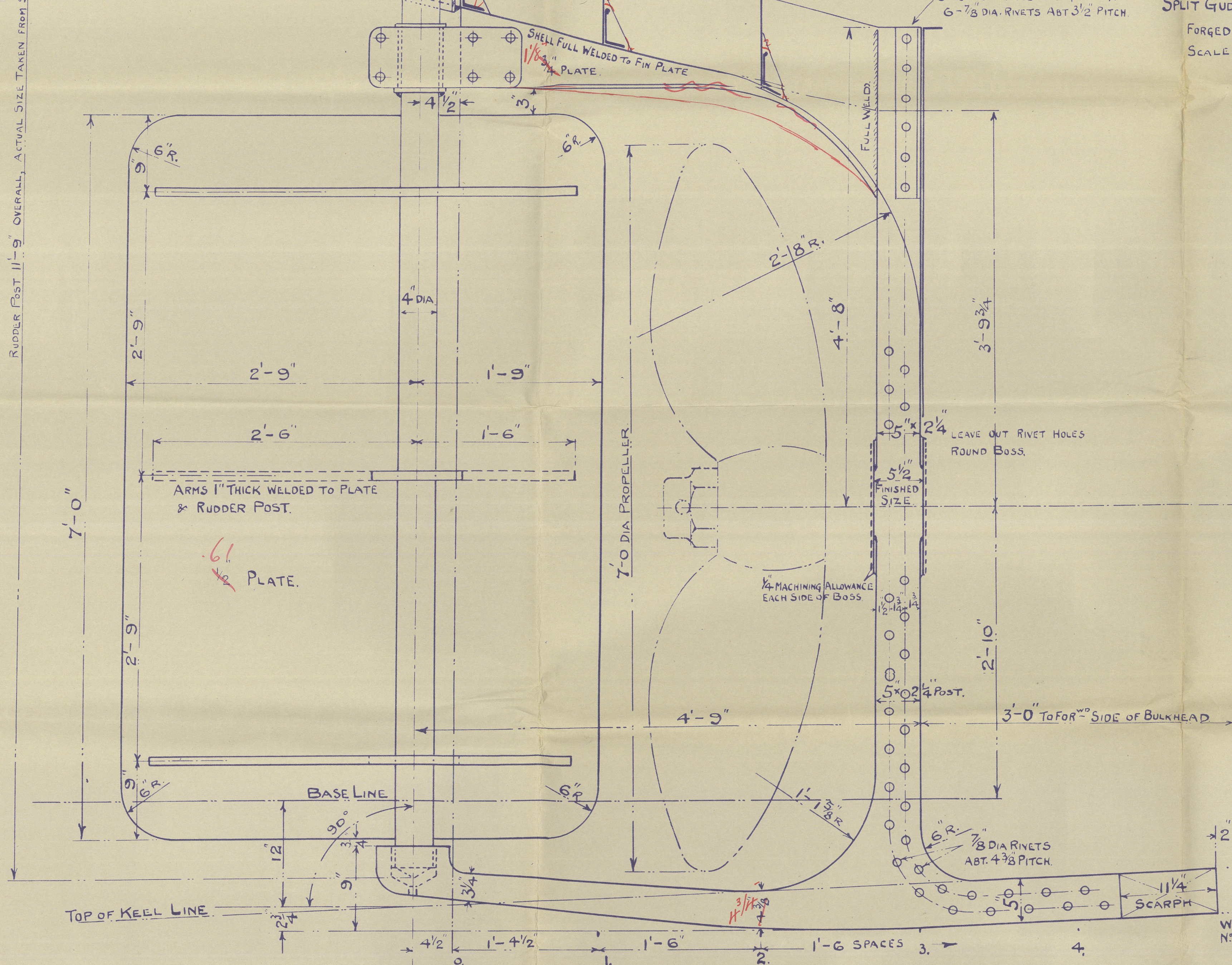


QUADRANT SHRUNK & KEYED TO RUDDER POST.



RUDDER QUADRANT. 1. OFF
SCALE 3"=1'-0"

RUDDER POST 11" 9" OVERALL, ACTUAL SIZE TAKEN FROM SHIP.



DETAIL OF BOTTOM BEARING
SCALE 3"=1'-0"

No 277

RUDDER & STERNFRAME

SCALES AS MARKED.

CHARLES HILL & SONS LTD.
BRISTOL.
DRAWING NO. 1/277.
DATE 15.7.39.

JHL
25/1/39

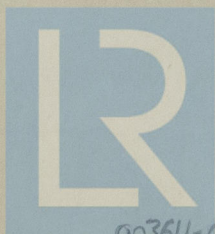
WS. 725

Chas Hill & Sons Ltd

No 277

"PETER JOLIFFE"

Rudder & Stemframe Plan



© 2020

Lloyd's Register
Foundation

003611-003619-0145