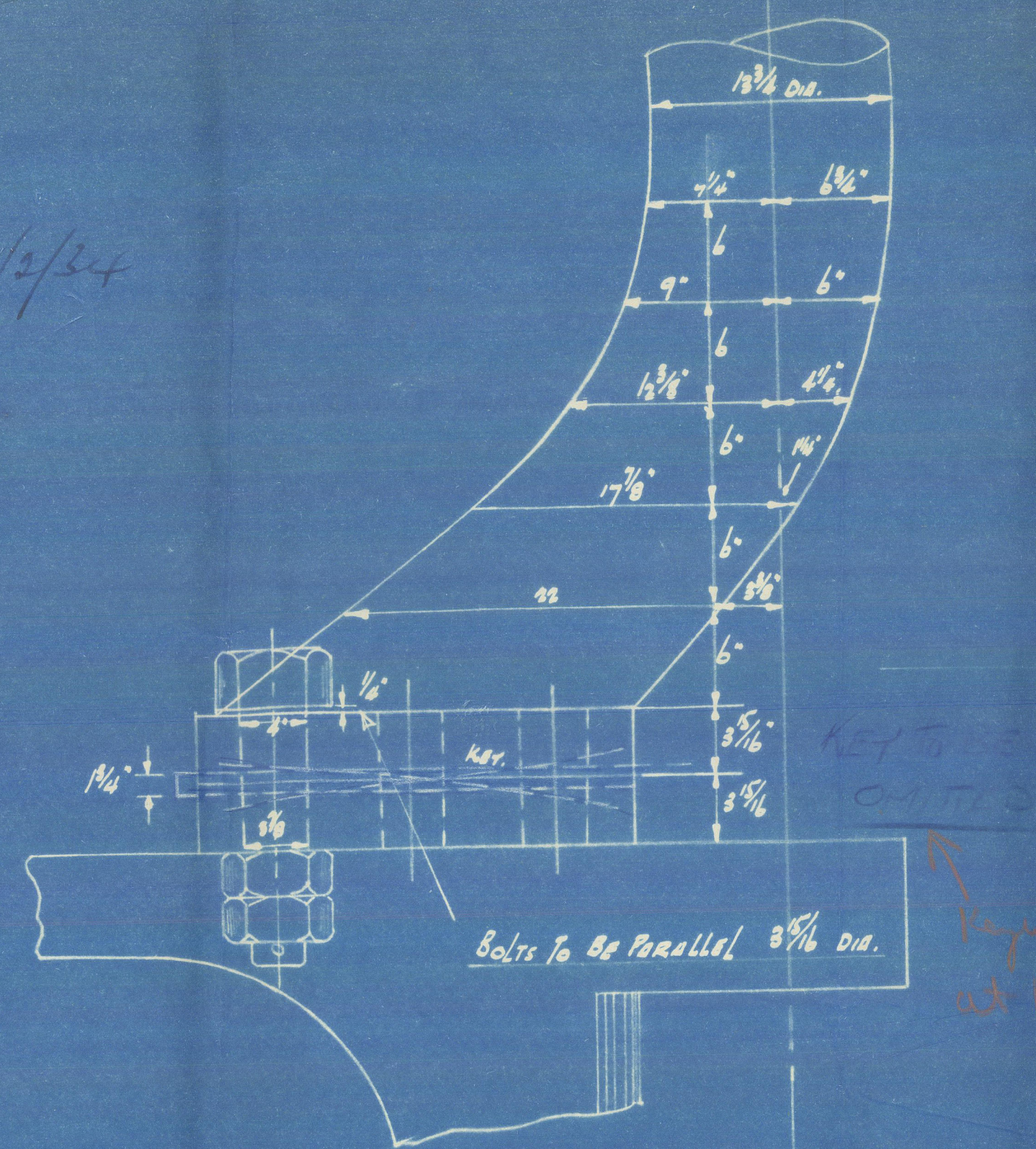
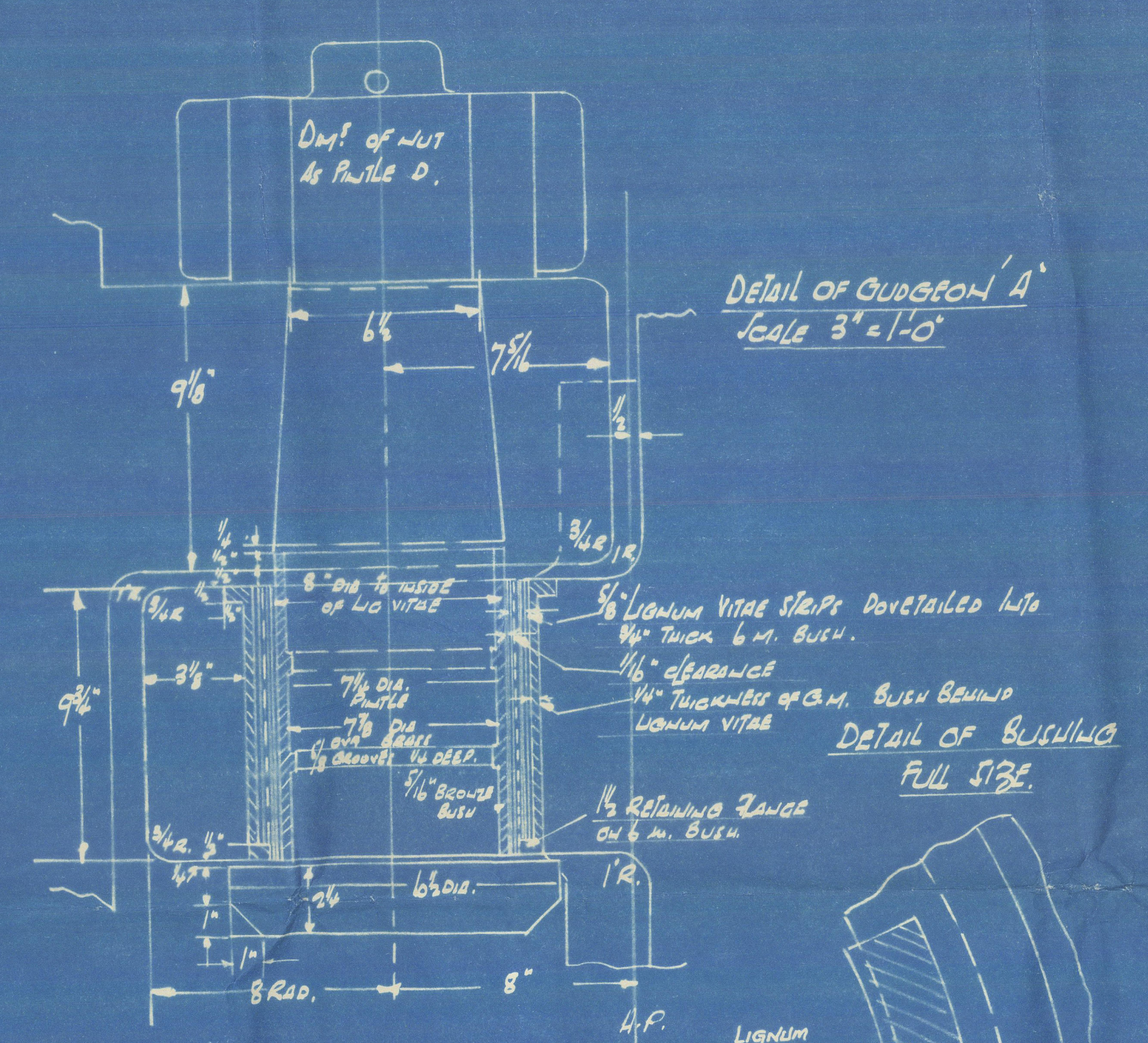
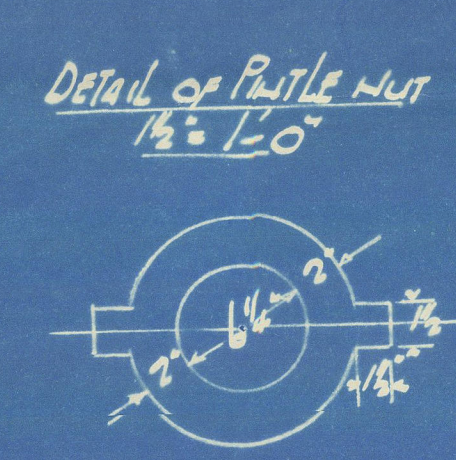
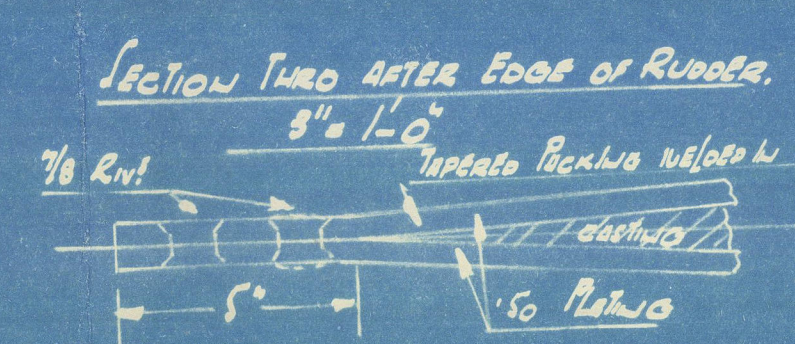
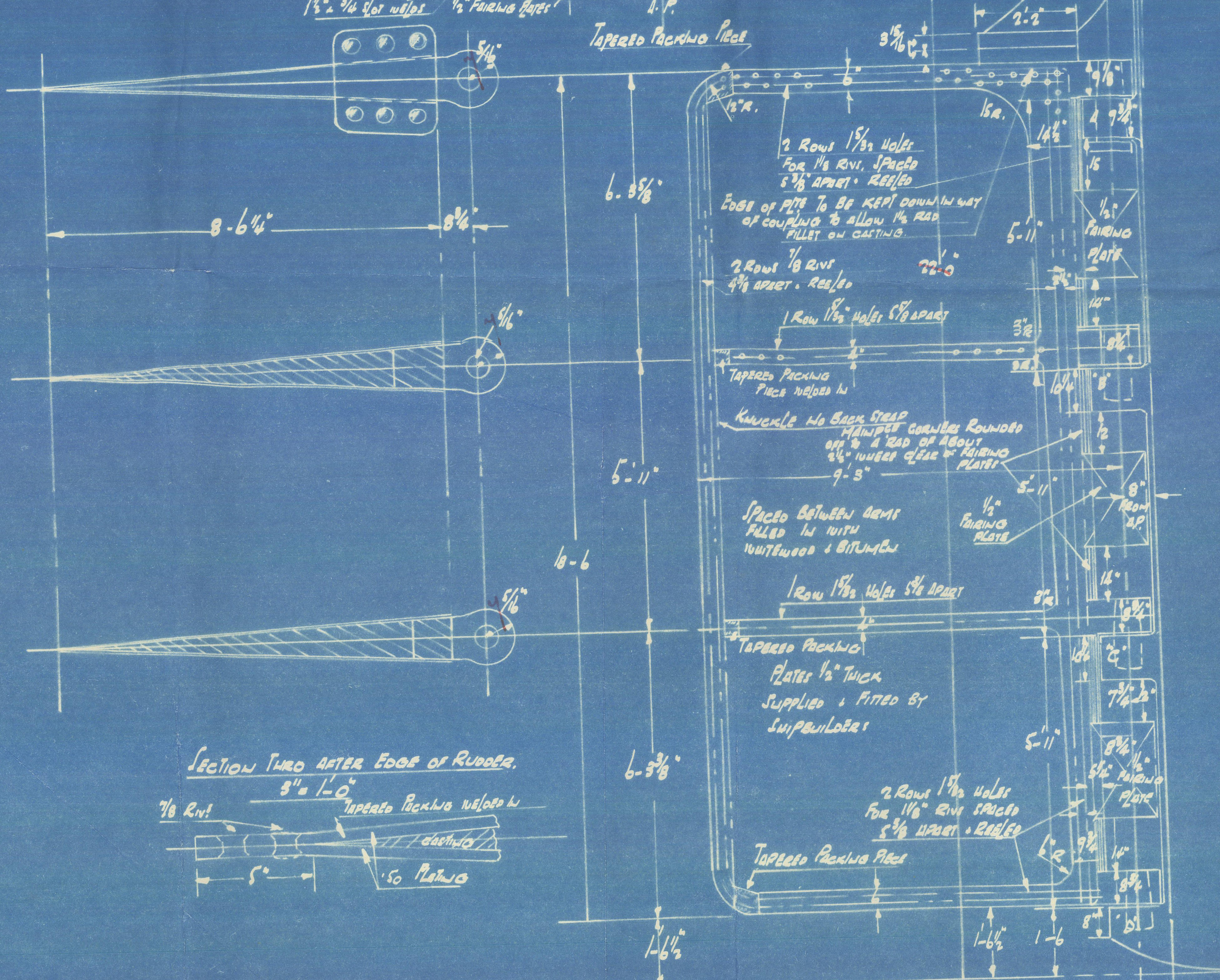
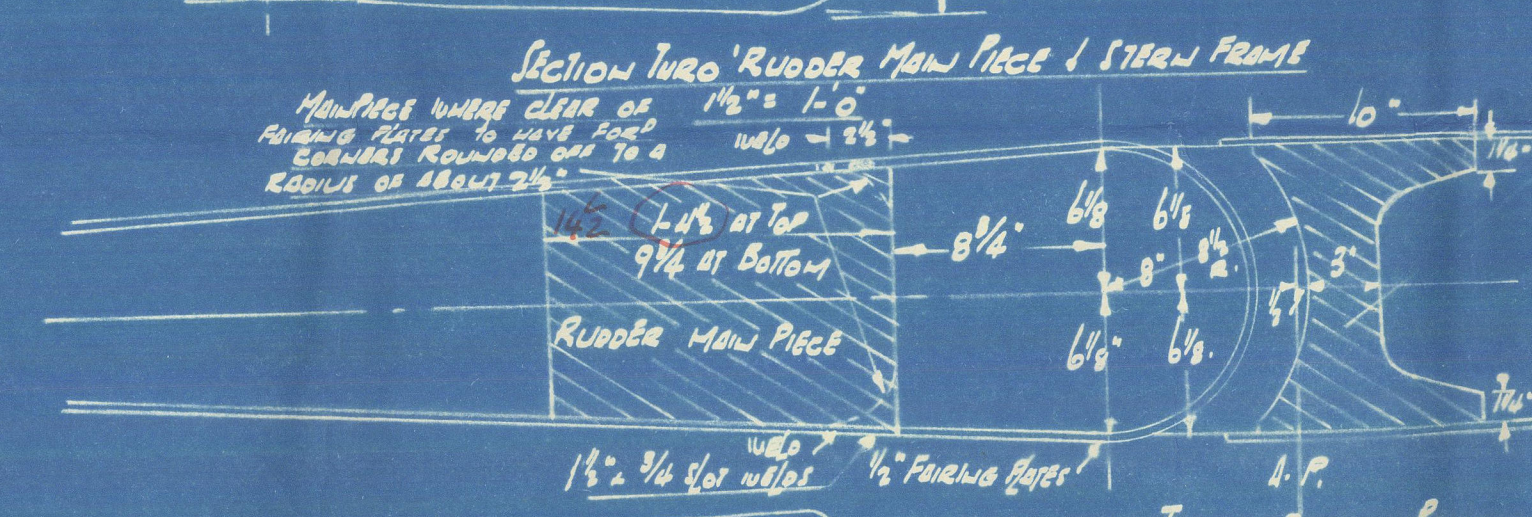
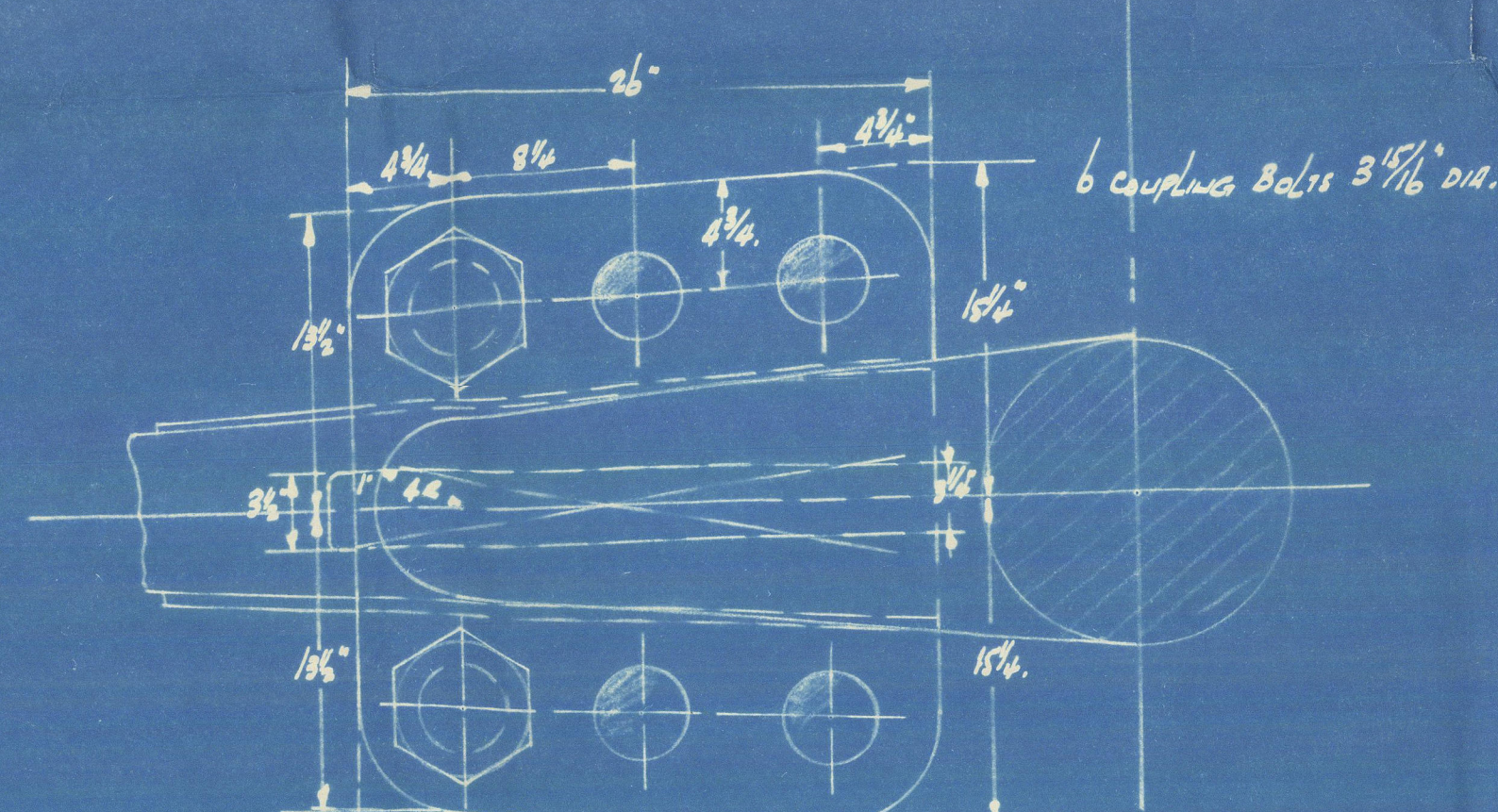


7/2/34

NO 536 PLAN OF RUDDER SCALE $\frac{1}{2}" = 1'-0"$

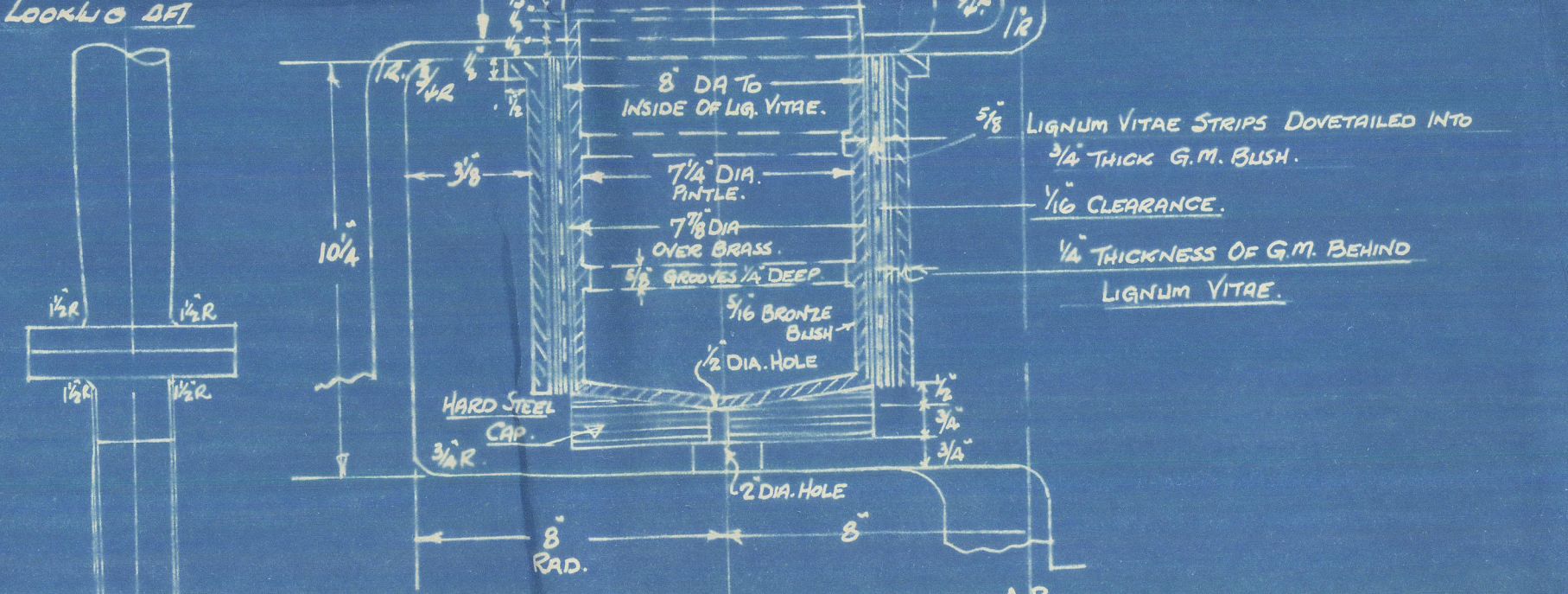


Speed assumed 12 knots
Implying fullness 9/47
at 1000 fms (5" x 14")

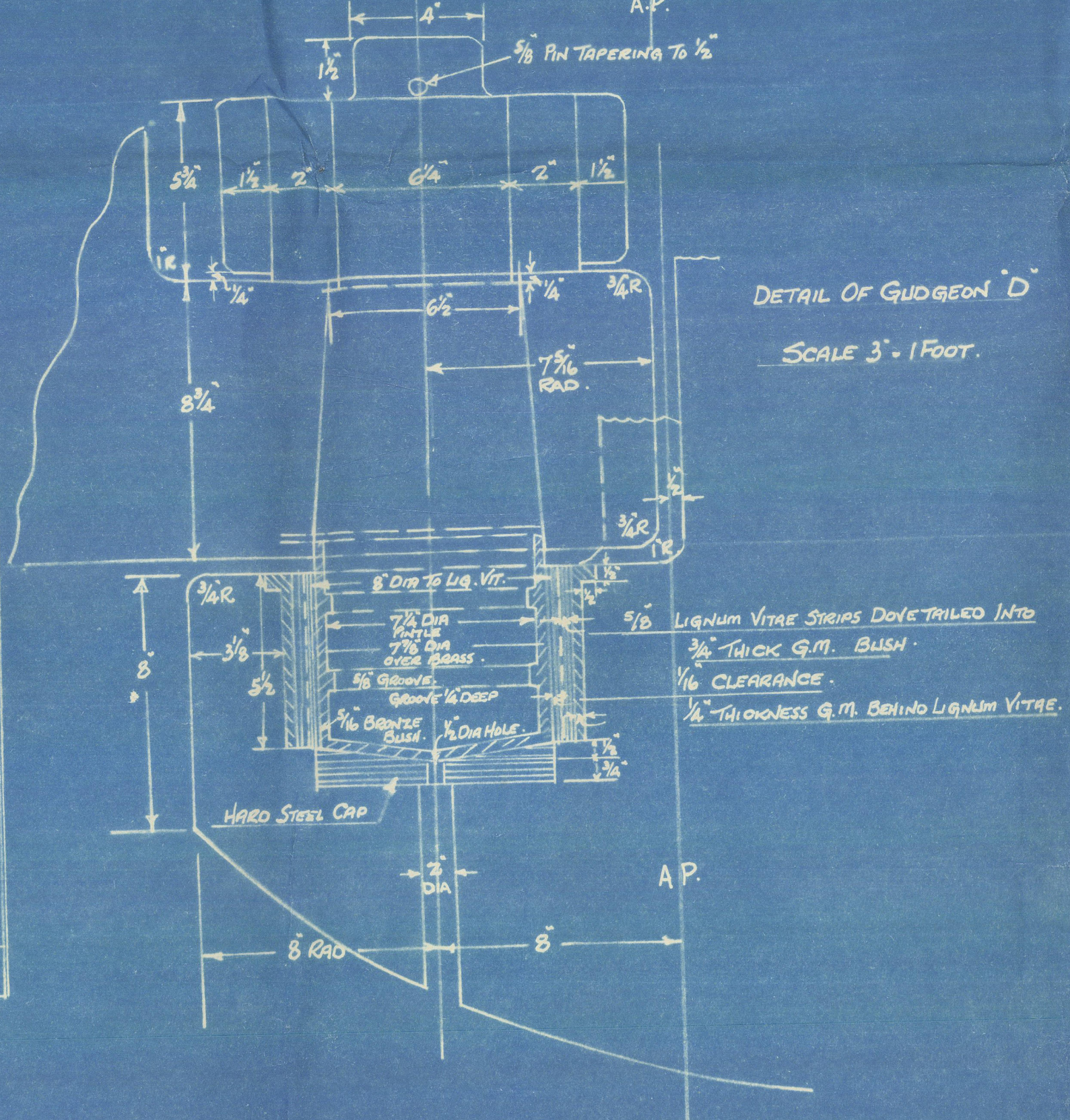


DETAIL OF GUDGEON B & C
SCALE 3\"/>

SECTION AT FORE END
OF RUDDER MAIN PIECE
LOOKING AFT



DETAIL OF GUDGEON D
SCALE 3\"/>



Workman, Clark.

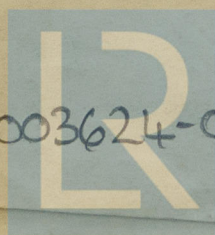
no 536.

Ruddis.

21.

M/V "ACAVUS"

003620-003624-0004



© 2021

Lloyd's Register
Foundation