

Lloyd's Register of Shipping.

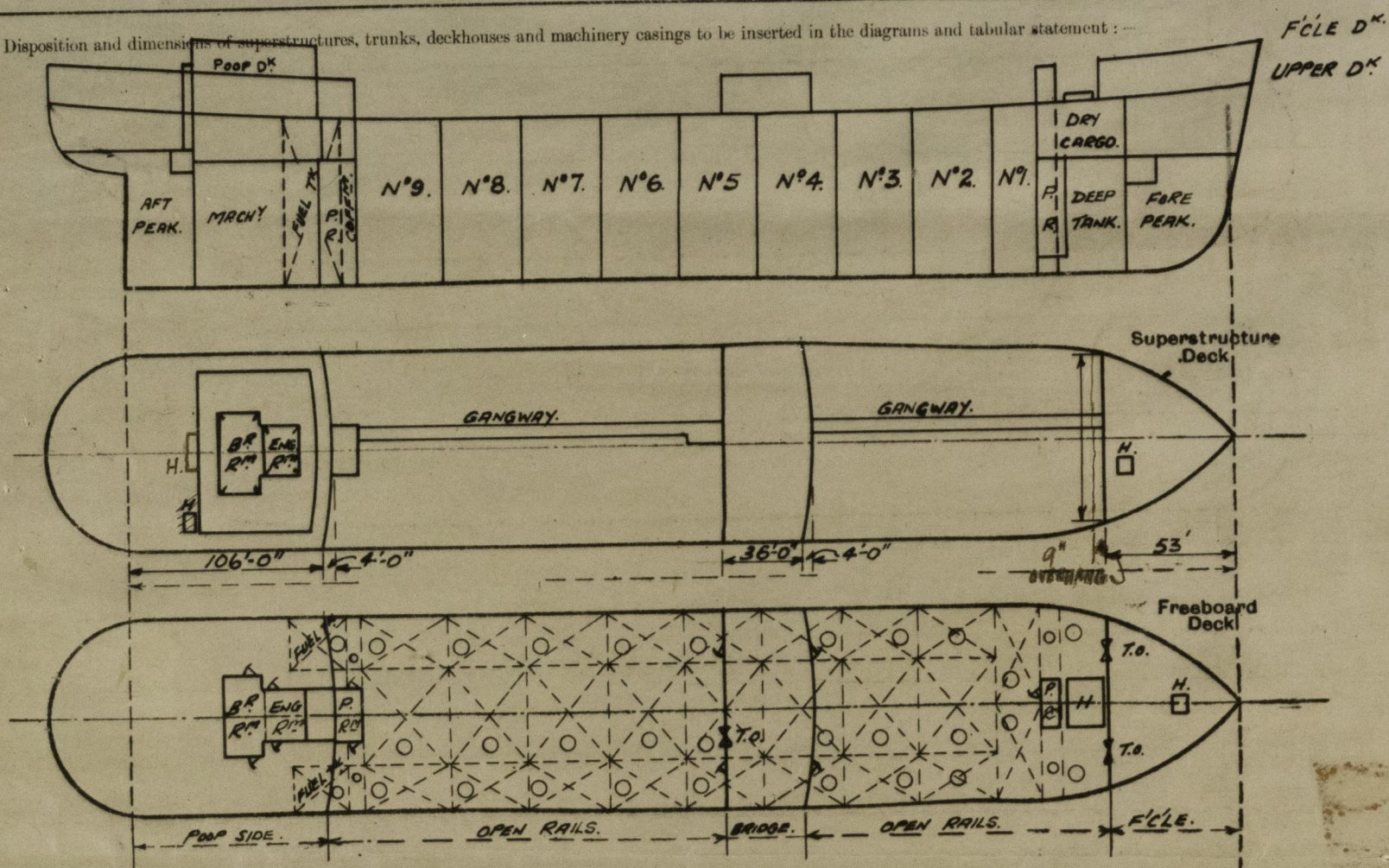
SURVEYS FOR FREEBOARD.

(CONDITIONS OF ASSIGNMENT.)

Ship's Name **"HYRCANIA" EX. "CHATTERTON HILL"**
 Official Number **181852**
 Nationality and Port of Registry **BRITISH LONDON.**

Port of Survey **Birkenhead.**
 Surveyor's Signature **Lockhart.**
 Date of Survey **Feb. 1948.**

Disposition and dimensions of superstructures, trunks, deckhouses and machinery casings to be inserted in the diagrams and tabular statement:



Particulars of Superstructures, Trunks, Casings, Deckhouses.

	Coaming	Plating	Stiffeners	Spacing	End Attachments of Stiffeners	Size of Openings	Height of Sills	Height of Casings
Poop Bulkhead		7/16" ✓	9" x 4" x 1/2" ✓	30" ✓		2-5'-0" x 2'-4" ✓	18" ✓	8'-0" ✓
Raised Quarter Deck Bulkhead		" ✓	4" x 3" x 3/8" ✓	" ✓	Welded	2-5'-2" x 3'-0" ✓	19" ✓	8'-0" ✓
Bridge, After Bulkhead		" ✓	9" x 4" x 1/2" ✓	" ✓	top	2-5'-4" x 2'-3" ✓	18" ✓	" ✓
Bridge, Forward Bulkhead		" ✓	4" x 3" x 3/8" ✓	" ✓	bottom	2-4'-0" x 3'-0" ✓	19" ✓	10'-0" ✓
Forecastle Bulkhead		" ✓	4" x 3" x 3/8" ✓	" ✓		2-5'-0" x 2'-5" ✓	18" ✓	8'-0" ✓
Trunk, Aft	None		9" x 4" x 1/2" ✓	" ✓		1-8'-0" x 2'-1" ✓	16" ✓	" ✓
Trunk, Forward Pump Rm. Aft		" ✓	5" x 3" x 3/8" ✓	" ✓		4-8'-0" x 2'-4" ✓	15" ✓	" ✓
Exposed Machinery Casings on Freeboard or Raised Quarter Deck For		" ✓	3 1/2" x 2 1/2" x 3/8" ✓	" ✓				
Exposed Machinery Casings on Superstructure Decks POOP DECKHOUSE		" ✓						
Machinery Casings within Superstructures not fitted with Class I Closing Appliances	None							
Deckhouses on Flush Deck Ships	None							

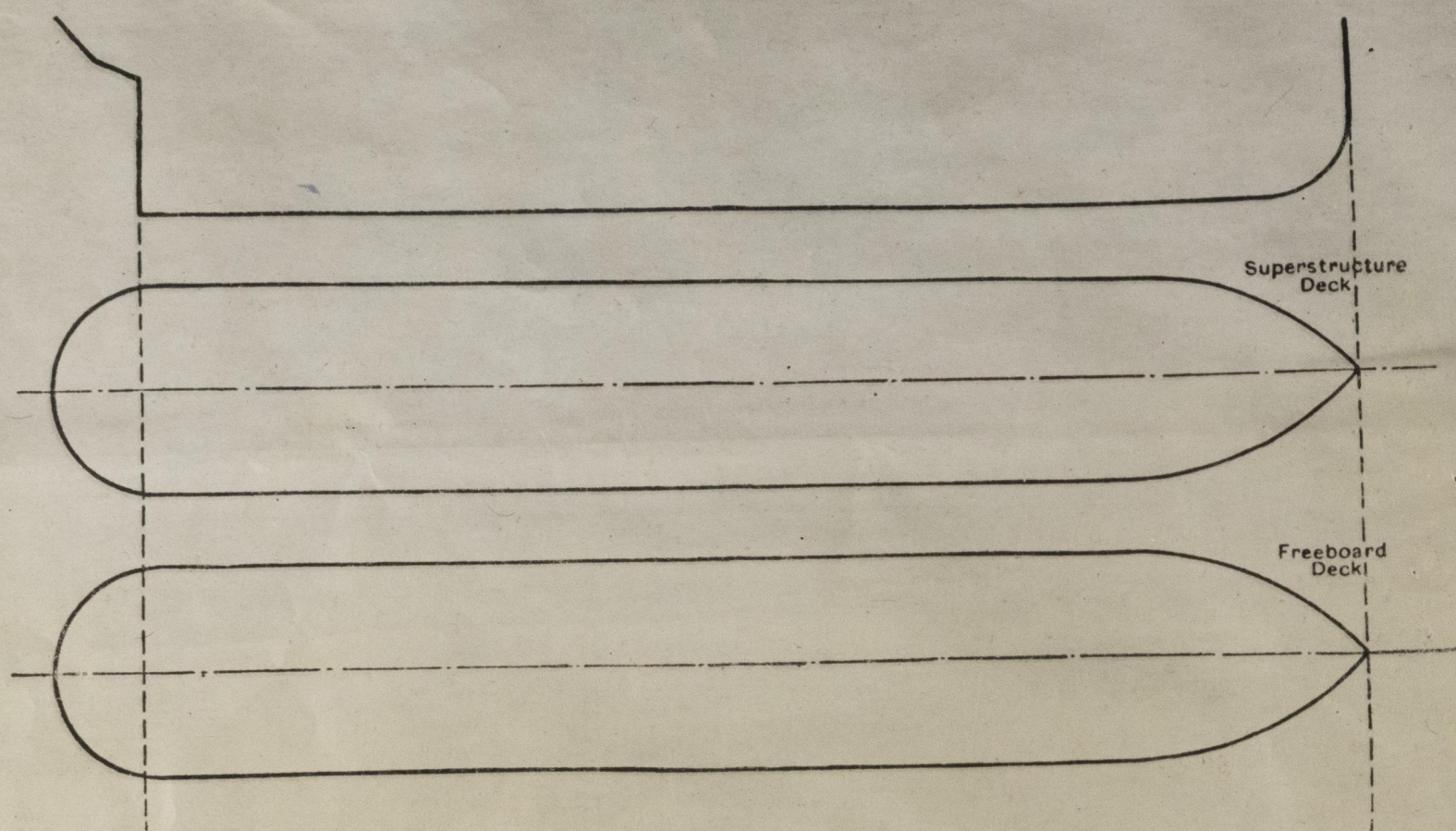
Stiffness flanges plates or angles welded for on to bulkheads.

Particulars of Closing Appliances (state if capable of being manipulated from both sides).

Poop Bulkhead	Hinged steel W.T. Door (P.&S.) capable of being manipulated from both sides
Raised Quarter Deck Bulkhead	Hinged steel W.T. doors capable of being manipulated from both sides.
Bridge, After Bulkhead	Portable steel plates secured by hook bolts.
Bridge, Forward Bulkhead	Hinged steel W.T. doors capable of being manipulated from both sides.
Forecastle Bulkhead	Hinged steel W.T. doors capable of being manipulated from both sides.
Exposed Machinery Casings on Freeboard or Raised Quarter Deck	Portable steel plates secured by hook bolts.
Exposed Machinery Casings on Superstructure Decks	Pump Rooms - Hinged steel W.T. doors capable of being manipulated from both sides.
Machinery Casings within Superstructures not fitted with Class I Closing Appliances	No openings.
Deckhouses on Flush Deck Ships	No openings

PARTICULARS OF PROTECTION TO OPENINGS, ETC.

The following diagrams should be used to indicate the positions of cargo and coaling hatchways, gangway, cargo and coaling ports, ventilators, companionways, etc., which would affect the seaworthiness of the ship:—



Particulars of fiddle, funnel and ventilator coamings, engine room skylight and other openings in machinery casing tops and their means of closing:—
Fiddle openings fitted with gratings and hinged steel flaps. ✓

E.R. & BR. ventilator and funnel coamings strongly constructed of steel. ✓

E.R. & Pump Room skylights strongly constructed of steel. ✓

Particulars of Flush Bunker Scuttles:— *one on poop deck to Lazarets. Bunker fastening with permanent chain attachment.* ✓

Particulars of Companionways:— Pump Rooms - Hinged steel W.T. doors, manipulated from both sides, openings $2-5'0'' \times 2'2''$ sill $18''$
Poop Deckhouse - plating steel, openings in sides and ends $4-5'0'' \times 2'4''$, sills $15''$ ✓
with hinged steel W.T. doors manipulated from both sides.

Particulars of Ventilators in exposed positions on freeboard and superstructure decks:—

Forecastle Deck:— $1-3'0'' \times 14''$ DIA. ✓
 $1-5'0'' \times 12''$ " ✓
 $1-3'0'' \times 12''$ " ✓

Upper Deck:— $2-13'0'' \times 18''$ DIA. ✓
 $2-11'0'' \times 18''$ " ✓

Bridge Deck:— $1-20'0'' \times 30''$ " ✓

Poop Deck:— $4-3'0'' \times 14''$ DIA. ✓

$1-2'8'' \times 12''$ DIA. ✓

$2-12'0'' \times 18''$ " ✓

$1-3'0'' \times 10''$ " ✓

Efficient closing appliances provided for all ventilator coamings. ✓

Coamings exceeding 36" in height suitably supported. ✓

Particulars of Air Pipes in exposed positions on freeboard, raised quarter, or superstructure decks:—

Forecastle Deck:— $1-4'0'' \times 4''$ DIA. } To Fore Peak. ✓
 $2-3'6'' \times 2''$ " }

Upper Deck:— $2-8'0'' \times 7''$ DIA. To Deep Tank. ✓
 $2-4'0'' \times 3''$ " " Fore Cofferdam. ✓
 $2-4'0'' \times 3''$ " " Aft. ✓
 $2-7'6'' \times 7''$ " " O.P. Bunkers. ✓

Poop Deck:— $1-2'6'' \times 5''$ " " Aft Peak. ✓

Efficient closing appliances provided for all air escape pipes. ✓

Particulars of Gangway Cargo and Coaling Ports:—

None.

Hyrcania

Particulars of Scuppers and Sanitary Discharge Pipes:—

Scuppers and sanitary discharges from Poop accommodation led overboard below the freeboard deck and fitted with substantially constructed storm valves at ship's side. ✓

Scuppers and sanitary discharges from Midship accommodation led overboard above the freeboard deck and fitted with substantially constructed storm valves at ship's sides. ✓

Particulars of Side Scuttles:—

Poop Tween Decks:— side scuttles of strong construction fitted with hinged deadlights permanently attached. ✓

Vertical distance of Sill of lowest Side Scuttle above top of keel

none below Freeboard Deck. ✓

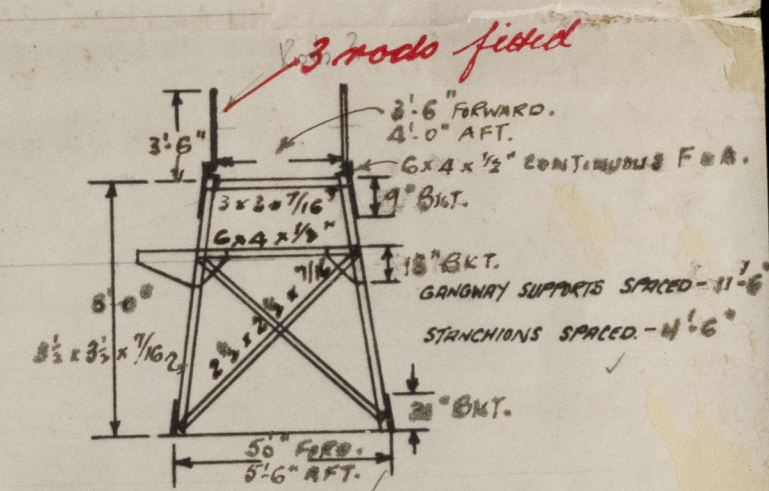
Particulars of Guard Rails:—

At sides of Upper, Forecastle & Poop Decks

Stanchions $3'-6''$ in height spaced *about* $4'-6''$ apart and fitted with 3 rails
 $3'-9''$ Bulwark at bridge sides. ✓

Particulars of Gangways, Lifelines, etc.:—

Fore and aft gangway fitted between the forecastle and bridge deck and bridge and poop deck. ✓



Particulars of Freeing Arrangements.

	Length of Bulwark	Height of Bulwark	Size of Freeing Ports	Number each side	Area each side	Rule area each side
After Well ...						
Fore Well ...						

State position of each freeing port ... (After Well:—
(F. and A. position and height above deck edge) (Forward Well:—

State whether the freeing ports are fitted with shutters, bars, or rails, and give particulars of such:—

Additional area where sheer is less than standard.

PARTICULARS OF PROTECTION TO OPENINGS, ETC.

		HATCHWAYS ON FREEBOARD AND SUPERSTRUCTURE DECK							STR. OTHER SMALL HATCHES		
		FREEBOARD DECK			SUPER DECK						
Description of Hatchway		TO STORE	TO CARGO HOLD	TO OIL TANKS	TO FORE & AFT	TO C/O'S	TO DEEP TANK	TO C.F. BUNKERS	TO STEWARD	TO ALLEYWAY	TO AMMUNITION
Dimensions of Hatchway		3'0" x 3'0"	11'3" x 15'	48" dia.	24" dia.	24" dia.	30" dia.	6'0" x 2'6"	2'3" x 2'3"	3'0" x 3'0"	
COAMINGS	Height above Deck	30"	30"	33"	24"	24"	30"	36"	36"	30"	
	Thickness	1/2"	1/2"	1/2"	1/2"	1/2"	1/2"	3/4"	3/8"	3/8"	
	Stiffeners	3" FLATS.	3" FLATS.	3" FLATS.	3" FLATS.	3" FLATS.	3" FLATS.				
	Brackets, Stays		EXTRA 4' AFT								
HATCH BEAMS	Number										
	Spacing										
FORE AND AFTERS	Scantling and Sketch										
	Bearing Surface										
HATCH COVERS	Material	STEEL	STEEL	STEEL	STEEL	STEEL	STEEL	STEEL	STEEL	STEEL	STEEL
	Thickness	50" STIFFENED.									
HATCH COVERS	How fitted	HINGED									
	Bearing Surface	SECURED BY EFFICIENT TOGGLES									
Spacing of Cleats											
Number of Tarpaulins											

*Are wood fore and afters steel shod at all bearing surfaces? - ✓
 Are battens and wedges efficient and in good condition? - ✓
 Are tarpaulins in good condition and in accordance with rule requirements? - ✓
 Are lashings provided in accordance with rule requirements? - ✓

Particulars of any special features:—

All cargo oil tank hatch covers fitted with ullage doors 10" diameter of strong construction secured by strongbacks.

*Subsides as present marked on the vessel's sides:—
 9' 2 3/4" from top of steel upper deck to centre of disc.
 Tropical 7 1/2" above centre of disc.
 Winter 7 1/2" below " " "
 Winter North Atlantic 12 1/2" " " "
 Fresh water Allowance 8 1/2"*

Endorsement at first survey and at surveys for renewal of Certificate:—

The fittings and appliances are in accordance with the particulars shown on this form (or as now modified) and are in good condition.



© 2020

Lloyd's Register Foundation