

Lloyd's Register of Shipping.

Index No. 43162
(For London Office only.)

SURVEYS FOR FREEBOARD.
(CONDITIONS OF ASSIGNMENT.)

2 SEP 1951

Ship's Name "STAR XII", ex "JACOBUS"

Port of Survey Bremen

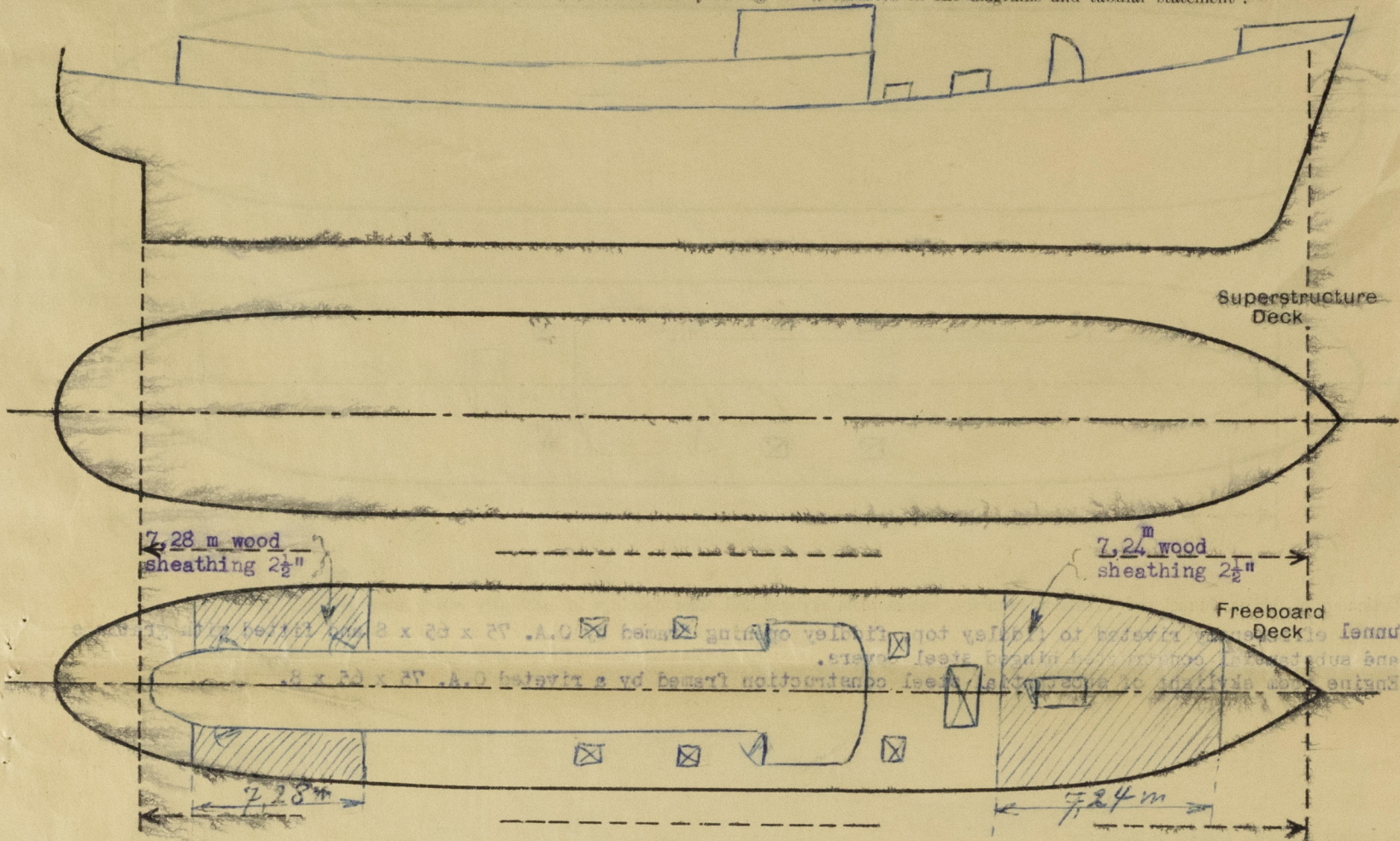
Official Number -

Surveyor's Signature A. H. C. C. C.

Nationality and Port of Registry Sandefjord/Norway

Date of Survey September, 1951

Disposition and dimensions of superstructures, trunks, deckhouses and machinery casings to be inserted in the diagrams and tabular statement :-



Particulars of Superstructures, Trunks, Casings, Deckhouses.

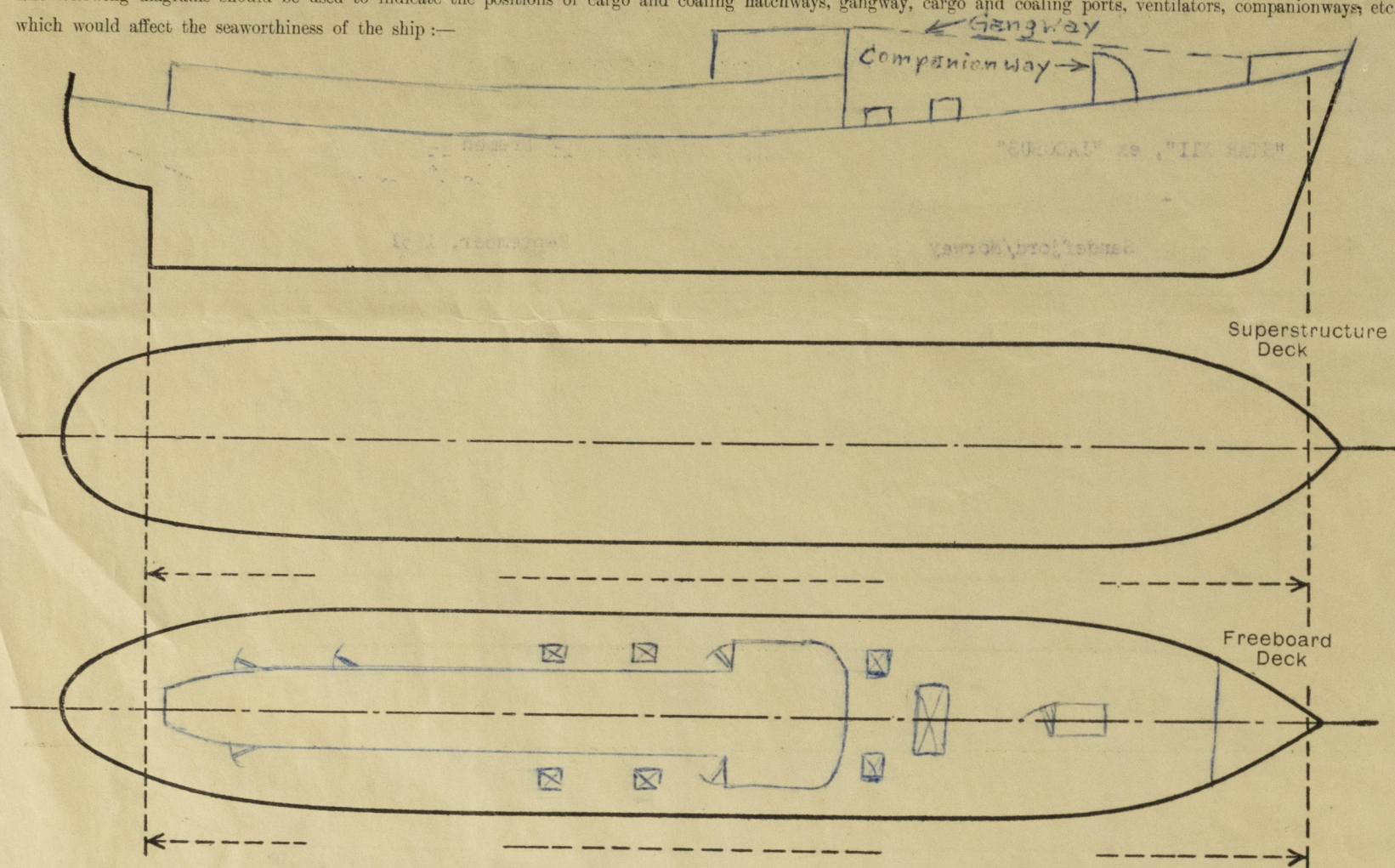
	Coaming	Plating	Stiffeners	Spacing	End Attachments of Stiffeners	Size of Openings	Height of Sills	Height of Casings
Poop Bulkhead	-	-	-	-	-	-	-	-
Raised Quarter Deck Bulkhead	-	-	-	-	-	-	-	-
Bridge, After Bulkhead	-	-	-	-	-	-	-	-
Bridge, Forward Bulkhead	-	-	-	-	-	-	-	-
Forecastle Bulkhead	-	-	-	-	-	-	-	-
Trunk, Aft	-	-	-	-	-	-	-	-
Trunk, Forward	-	-	-	-	-	-	-	-
Exposed Machinery Casings on Freeboard or Raised Quarter Decks	8 mm	8 mm	0.A.75x8	750	bracket top	3, 1100x610	630	1975
Exposed Machinery Casings on Superstructure Decks	-	-	-	-	-	-	-	-
Machinery Casings within Superstructures not fitted with Class I Closing Appliances	-	-	-	-	-	-	-	-
Deckhouses on Flush Deck Ships	9	9	0.A. 90x9	700	bracket top	2, 1300x620	610	2180

Particulars of Closing Appliances (state if capable of being manipulated from both sides).

Poop Bulkhead	-
Raised Quarter Deck Bulkhead	-
Bridge, After Bulkhead	-
Bridge, Forward Bulkhead	-
Forecastle Bulkhead	-
Exposed Machinery Casings on Freeboard or Raised Quarter Decks	hinged steel w.t. doors, manipulated from both sides
Exposed Machinery Casings on Superstructure Decks	-
Machinery Casings within Superstructures not fitted with Class I Closing Appliances	-
Deckhouses on Flush Deck Ships	hinged solid built hard wood doors, manipulated from both sides.

PARTICULARS OF PROTECTION TO OPENINGS, ETC.

The following diagrams should be used to indicate the positions of cargo and coaling hatchways, gangway, cargo and coaling ports, ventilators, companionways etc., which would affect the seaworthiness of the ship:—



Particulars of fiddle, funnel and ventilator coamings, engine room skylight and other openings in machinery casing tops and their means of closing:—

Funnel efficiently riveted to fiddle top, fiddle opening framed by O.A. 75 x 65 x 8 and fitted with gratings and substantial constructed hinged steel covers.

Engine room skylight of substantial steel construction framed by a riveted O.A. 75 x 65 x 8.

Particulars of Flush Bunker Scuttles:—

None

Particulars of Companionways:—

Steel companionway strongly built and riveted to steel forward deck plating and fitted with hinged solid made hard wood door capable of being operated from both sides. Sill of door 675 mm.

Particulars of Ventilators in exposed positions on freeboard and superstructure decks:—

All ventilator coamings are of substantial construction efficiently welded to deck plating and supported where required. Lowest coaming 915 mm above freeboard deck. Ventilator coamings closed by wooden plugs and canvas covers.

Particulars of Air Pipes in exposed positions on freeboard, raised quarter, or superstructure decks:—

Goose neck air pipes strongly built, openings 915 mm above freeboard deck. Openings closed by hinged steel covers. Air pipes for oil fuel tanks fitted with wire gauzes.

Particulars of Gangway Cargo and Coaling Ports:—

None

Particulars of Scuppers and Sanitary Discharge Pipes:—

No scuppers fitted from spaces below freeboard deck. Scuppers and sanitary discharges from spaces above freeboard deck are fitted with cast steel NR valves in connection with galvanized steel pipes of substantial construction in accessible position free of oil fuel tanks.

Particulars of Side Scuttles:—

No side scuttles in shell plating.

Vertical distance of Sill of lowest Side Scuttle above top of keel

Particulars of Guard Rails:—

Open guard rail of substantial construction fitted on 22.5 m length aft consisting of stanchions of 985 mm height and 3 rods.

Particulars of Gangways, Lifelines, etc.:—

No life lines fitted. Gangway from pilote bridge to stem with ladder to companionway.

Particulars of Freeing Arrangements.

	Length of Bulwark	Height of Bulwark	Size of Freeing Ports	Number each side	Area each side	Rule area each side
After Work Part ...	Open rail	./.	./.	./.	./.	./.
Forward Work Part ...	27 m	685 + 300 mm	11 openings for lines		8.35 feet ²	./.

State position of each freeing port ... { After Well:— ./.
(F. and A. position and height above deck edge) { Forward Well:— ./.

State whether the freeing ports are fitted with shutters, bars, or rails, and give particulars of such:— ./.

Additional area where sheer is less than standard. ./.



© 2020

Lloyd's Register Foundation

PARTICULARS OF PROTECTION TO OPENINGS, ETC.

HATCHWAYS ON FREEBOARD AND SUPERSTRUCTURE DECKS.									
Dimensions metric									
Description of Hatchway	1	2 oil bunkers	2 oil bunkers	2 oil bunkers			
Dimensions of Hatchway	20x2400	530 x 610	500x500	500x610			
COAMINGS	Height above Deck	...	400	610	160	160			
	Thickness	...	10	10	10	10			
	Stiffeners	...	10	10	10	10			
	Brackets, Stays	...	None	none	none	none			
HATCH BEAMS	Number	...							
	Spacing	...							
	Scantling and Sketch	...							
	Bearing Surface	...	None	none	none	none			
FORE AND AFTERS	Number	...							
	Spacing	...							
	Unsupported Lengths	...							
	Scantling* and Sketch	...	none	none	none	none			
HATCH COVERS	Material	...	steel	steel	steel	steel			
	Thickness	...	11	10	10	10			
	How fitted	...	bolted	5/8"	5/8"	5/8"			
	Spacing	...	380	220	220	220			
Spacing of Cleats	none	none	none	none			
Number of Tarpaulins	none	none	none	none			
*Are wood fore and afters steel shod at all bearing surfaces? Are battens and wedges efficient and in good condition? Are tarpaulins in good condition and in accordance with rule requirements? Are lashings provided in accordance with rule requirements?									
none									

Particulars of any special features :— none



© 2020
Lloyd's Register
Foundation