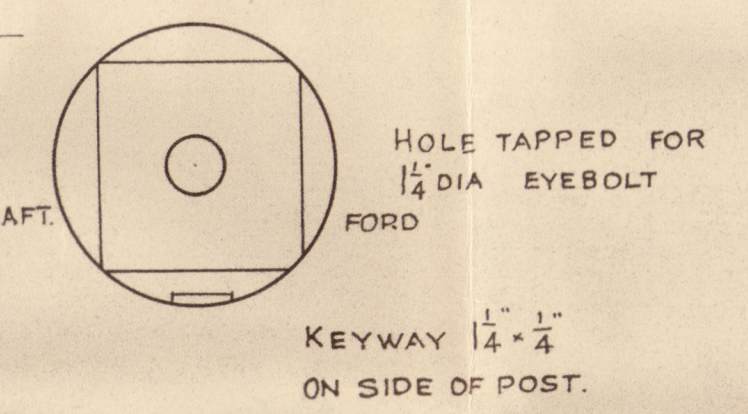
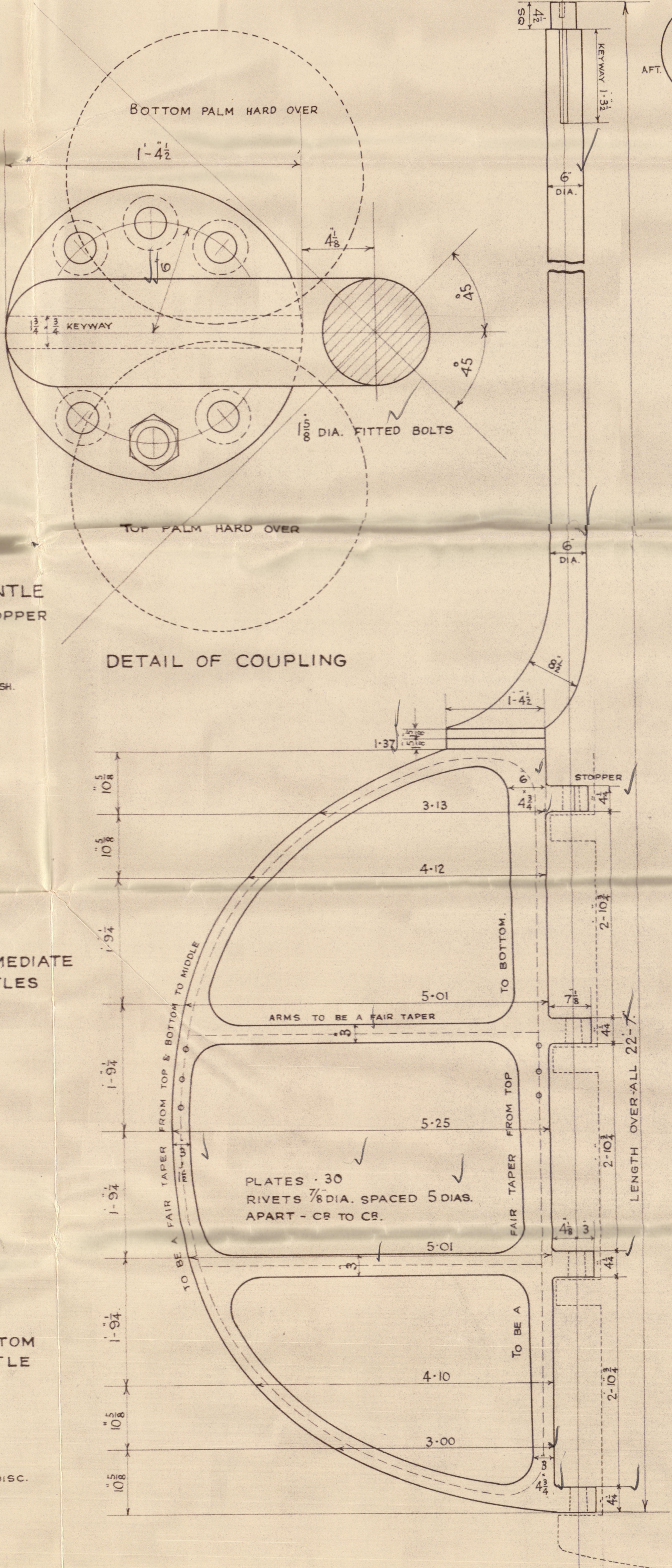
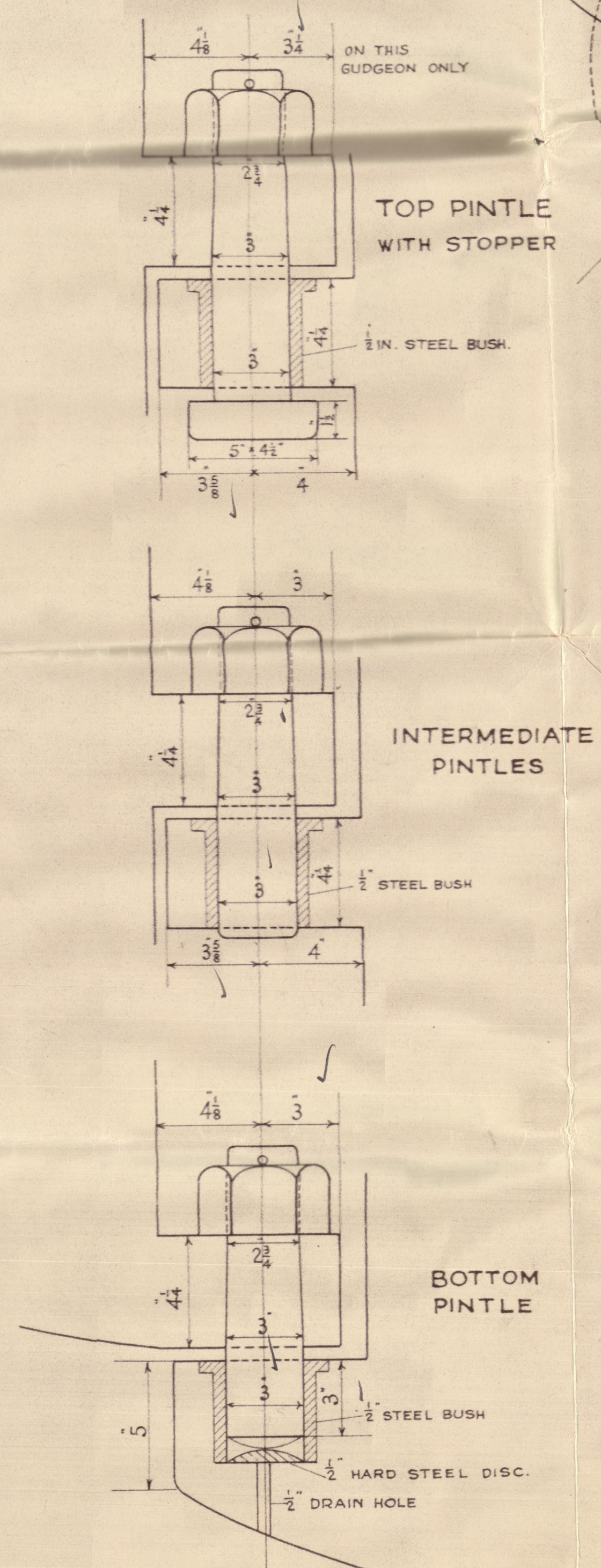


13.1.36

RUDDER FRAME
FORGED IRON
TO LLOYDS TESTS

COUPLING BOLTS TO BE SHIPPED FROM THE TOP AND NUTS SCREWED UP FROM UNDER SIDE - SPLIT PINS FITTED TO PREVENT NUTS TURNING

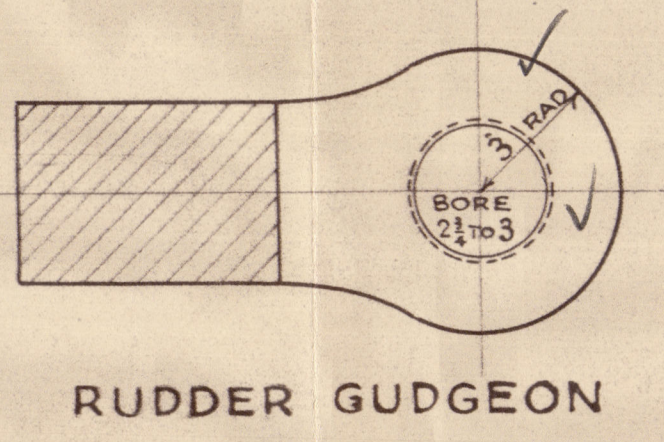


No. 1159.

SPEED NOT EXCEEDING 12 KNOTS

NOS	ORDINATES	S	FUNCTIONS	ORDINATES	S	FUNCTIONS
1	1.37	3	68	1.87	98	
2	3.13	2	6.26	9.79	2	19.58
3	4.12	1	6.18	16.97	1	25.45
4	5.01	4	20.04	25.10	4	100.40
5	5.25	2	10.50	27.56	2	55.12
6	5.01	4	20.04	25.10	4	100.40
7	4.10	1	6.15	16.81	1	25.21
8	3.00	2	6.00	9.00	2	18.00
9	2.00	1	6.00	9.00	1	18.00
10	1.00	1	6.00	9.00	1	18.00
11	0.00	1	6.00	9.00	1	18.00
12	0.00	1	6.00	9.00	1	18.00
13	0.00	1	6.00	9.00	1	18.00
14	0.00	1	6.00	9.00	1	18.00
15	0.00	1	6.00	9.00	1	18.00
16	0.00	1	6.00	9.00	1	18.00
17	0.00	1	6.00	9.00	1	18.00
18	0.00	1	6.00	9.00	1	18.00
19	0.00	1	6.00	9.00	1	18.00
20	0.00	1	6.00	9.00	1	18.00
21	0.00	1	6.00	9.00	1	18.00
22	0.00	1	6.00	9.00	1	18.00
23	0.00	1	6.00	9.00	1	18.00
24	0.00	1	6.00	9.00	1	18.00
25	0.00	1	6.00	9.00	1	18.00
26	0.00	1	6.00	9.00	1	18.00
27	0.00	1	6.00	9.00	1	18.00
28	0.00	1	6.00	9.00	1	18.00
29	0.00	1	6.00	9.00	1	18.00
30	0.00	1	6.00	9.00	1	18.00
31	0.00	1	6.00	9.00	1	18.00
32	0.00	1	6.00	9.00	1	18.00
33	0.00	1	6.00	9.00	1	18.00
34	0.00	1	6.00	9.00	1	18.00
35	0.00	1	6.00	9.00	1	18.00
36	0.00	1	6.00	9.00	1	18.00
37	0.00	1	6.00	9.00	1	18.00
38	0.00	1	6.00	9.00	1	18.00
39	0.00	1	6.00	9.00	1	18.00
40	0.00	1	6.00	9.00	1	18.00
41	0.00	1	6.00	9.00	1	18.00
42	0.00	1	6.00	9.00	1	18.00
43	0.00	1	6.00	9.00	1	18.00
44	0.00	1	6.00	9.00	1	18.00
45	0.00	1	6.00	9.00	1	18.00
46	0.00	1	6.00	9.00	1	18.00
47	0.00	1	6.00	9.00	1	18.00
48	0.00	1	6.00	9.00	1	18.00
49	0.00	1	6.00	9.00	1	18.00
50	0.00	1	6.00	9.00	1	18.00
51	0.00	1	6.00	9.00	1	18.00
52	0.00	1	6.00	9.00	1	18.00
53	0.00	1	6.00	9.00	1	18.00
54	0.00	1	6.00	9.00	1	18.00
55	0.00	1	6.00	9.00	1	18.00
56	0.00	1	6.00	9.00	1	18.00
57	0.00	1	6.00	9.00	1	18.00
58	0.00	1	6.00	9.00	1	18.00
59	0.00	1	6.00	9.00	1	18.00
60	0.00	1	6.00	9.00	1	18.00
61	0.00	1	6.00	9.00	1	18.00
62	0.00	1	6.00	9.00	1	18.00
63	0.00	1	6.00	9.00	1	18.00
64	0.00	1	6.00	9.00	1	18.00
65	0.00	1	6.00	9.00	1	18.00
66	0.00	1	6.00	9.00	1	18.00
67	0.00	1	6.00	9.00	1	18.00
68	0.00	1	6.00	9.00	1	18.00
69	0.00	1	6.00	9.00	1	18.00
70	0.00	1	6.00	9.00	1	18.00
71	0.00	1	6.00	9.00	1	18.00
72	0.00	1	6.00	9.00	1	18.00
73	0.00	1	6.00	9.00	1	18.00
74	0.00	1	6.00	9.00	1	18.00
75	0.00	1	6.00	9.00	1	18.00
76	0.00	1	6.00	9.00	1	18.00
77	0.00	1	6.00	9.00	1	18.00
78	0.00	1	6.00	9.00	1	18.00
79	0.00	1	6.00	9.00	1	18.00
80	0.00	1	6.00	9.00	1	18.00
81	0.00	1	6.00	9.00	1	18.00
82	0.00	1	6.00	9.00	1	18.00
83	0.00	1	6.00	9.00	1	18.00
84	0.00	1	6.00	9.00	1	18.00
85	0.00	1	6.00	9.00	1	18.00
86	0.00	1	6.00	9.00	1	18.00
87	0.00	1	6.00	9.00	1	18.00
88	0.00	1	6.00	9.00	1	18.00
89	0.00	1	6.00	9.00	1	18.00
90	0.00	1	6.00	9.00	1	18.00
91	0.00	1	6.00	9.00	1	18.00
92	0.00	1	6.00	9.00	1	18.00
93	0.00	1	6.00	9.00	1	18.00
94	0.00	1	6.00	9.00	1	18.00
95	0.00	1	6.00	9.00	1	18.00
96	0.00	1	6.00	9.00	1	18.00
97	0.00	1	6.00	9.00	1	18.00
98	0.00	1	6.00	9.00	1	18.00
99	0.00	1	6.00	9.00	1	18.00
100	0.00	1	6.00	9.00	1	18.00

AREA = $75.85 \times 1.77 = 44.75$ SQ. FT.
CG $\frac{345.14}{75.85 \times 2} = 2.27$
D = $2.27 \times 34 = 2.61$
A * D = $44.75 \times 2.61 = 116.79$

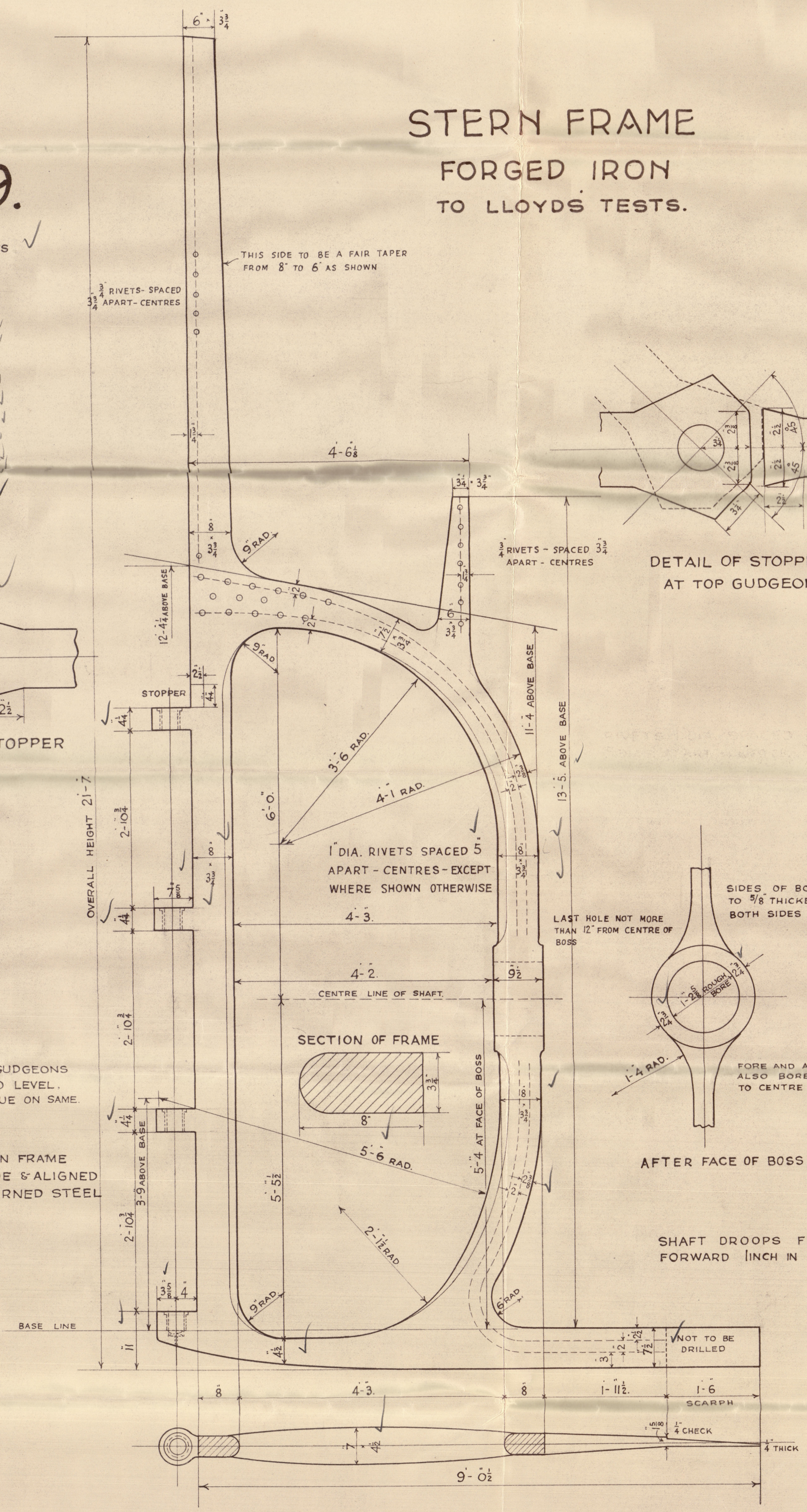


UPPER AND LOWER SURFACES OF GUDGEONS TO BE SQUARE TO POST AND DEAD LEVEL, SO THAT PINTLE NUTS WILL BEAR TRUE ON SAME

GUDGEONS ON STERN FRAME TO BE TURNED TRUE & ALIGNED BEFORE FITTING TURNED STEEL BUSHES

SCALE 1 IN. = 1 FT.
FOR DETAILS 3 INS. = 1 FT.

STERN FRAME
FORGED IRON
TO LLOYDS TESTS.



003659-003670-0100

COCHRANE & SONS LTD

YARD No 1159

STERN FRAME & RUDDER

Sp. Kirkella. ~10
'REMEVA
T

PLANTED	3634.....
FOR EN	TO
.....	mean Lloyd's Register
of shipping	FROM
COCHRANE & SONS, LTD.	
SHIPBUILDERS, SELBY.	
DATE	6/1/86

003659-003670-0100



© 2020

Lloyd's Register
Foundation