

# Certificate of Freeboard:

Name of Classification Society: *Lloyds Register of Shipping*

Name of ship: *Odense* Gross Tonnage: .....

Port of registry: *Copenhagen* Year when built: .....

Owner: *Det Forenede Dampskibsselskab* Class: *+ 100A1 with freeboard*

Type: *Full Steamships*

F. V. Summer freeboard in fresh water ..... ft. *11* in = *279* mm below the upper edge of the statutory deck line

T. Summer freeboard in tropical seas ..... / ft. *8 1/2* in = *318* mm below the upper edge of the statutory deck line

S. Summer freeboard (centre of disc) ..... / ft. *2* in = *356* mm below the upper edge of the statutory deck line

V. Winter freeboard ..... / ft. *4* in = *407* mm below the upper edge of the statutory deck line

N. A. Winter freeboard in north Atlantic ..... / ft. *6* in = *457* mm below the upper edge of the statutory deck line.

The statutory deck line is marked in accordance with *the Board of Trade*  
*freeboard tables 1 1/4" = 32 mm above the upper steel deck*  
*at Tides (top of Steel deck.)*

*This is to certify that the freeboard of the above vessel has been marked on the vessels Tides in accordance with the above.*

*Capt. B. Seaver.*

*Copenhagen. Oct. 21 - 24. sk*

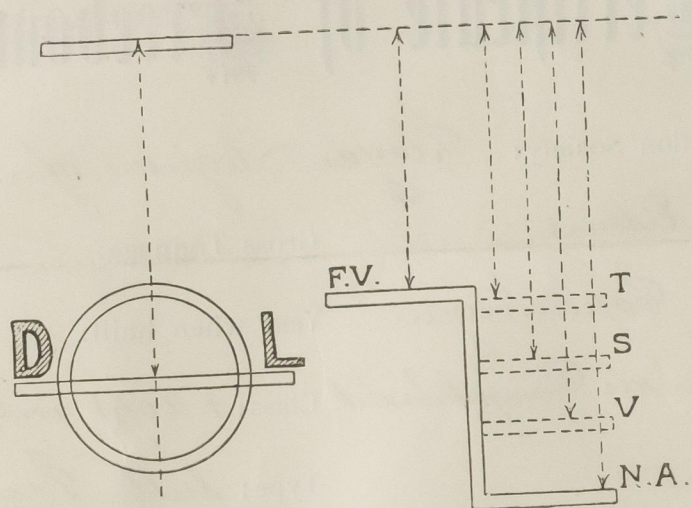


© 2020

*Lloyds Register*  
*Foundation*

003659-003670-0238





© 2020

Lloyd's Register  
Foundation