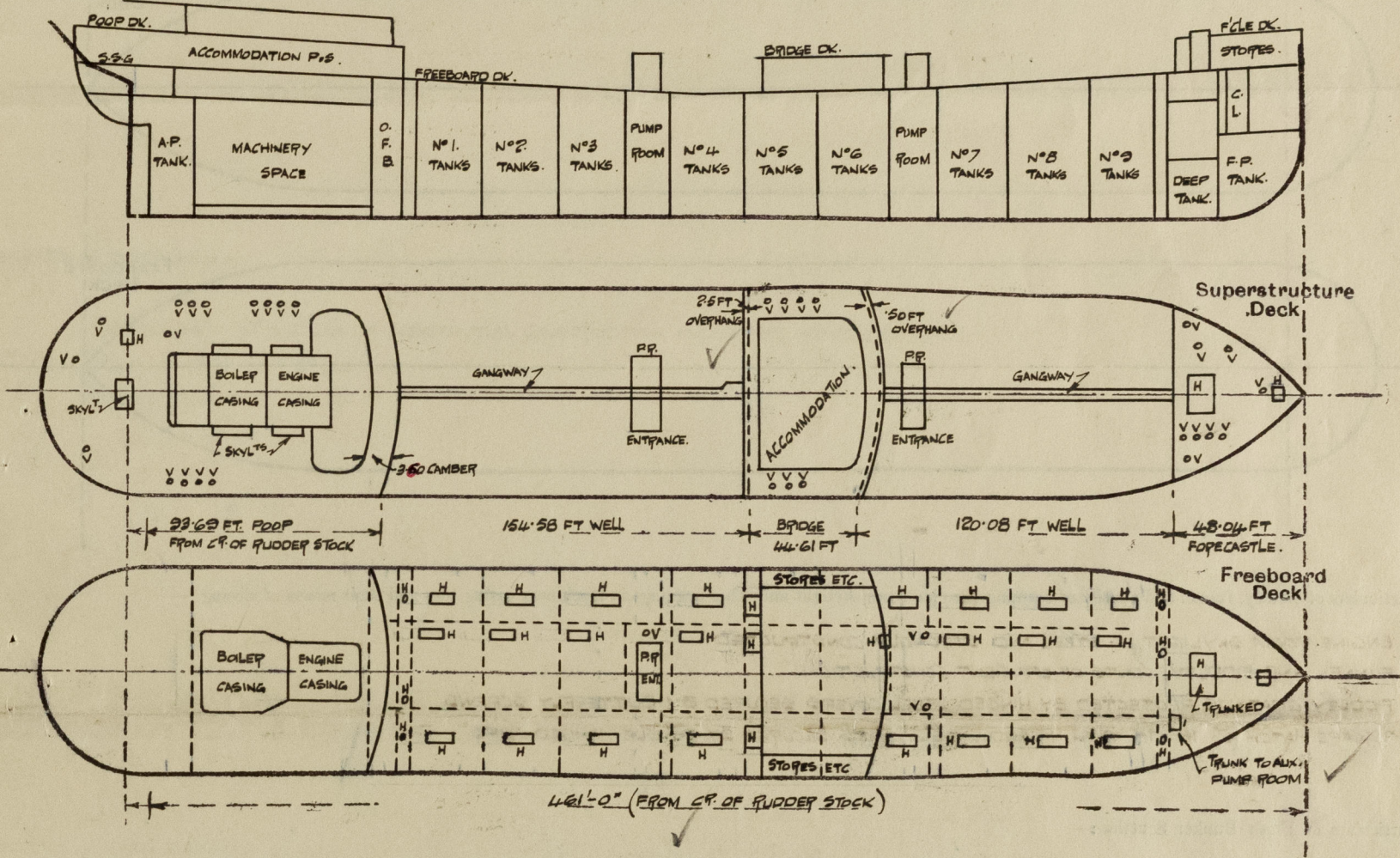


Lloyd's Register of Shipping.
SURVEYS FOR FREEBOARD.
(CONDITIONS OF ASSIGNMENT.)

Ship's Name NATICINA Port of Survey NEWCASTLE-ON-TYNE
Official Number 168373 Surveyor's Signature J. Muir
Nationality and Port of Registry BRITISH London Date of Survey DURING CONSTRUCTION. 1942.

Disposition and dimensions of superstructures, trunks, deckhouses and machinery casings to be inserted in the diagrams and tabular statement : —



Particulars of Superstructures, Trunks, Casings, Deckhouses.

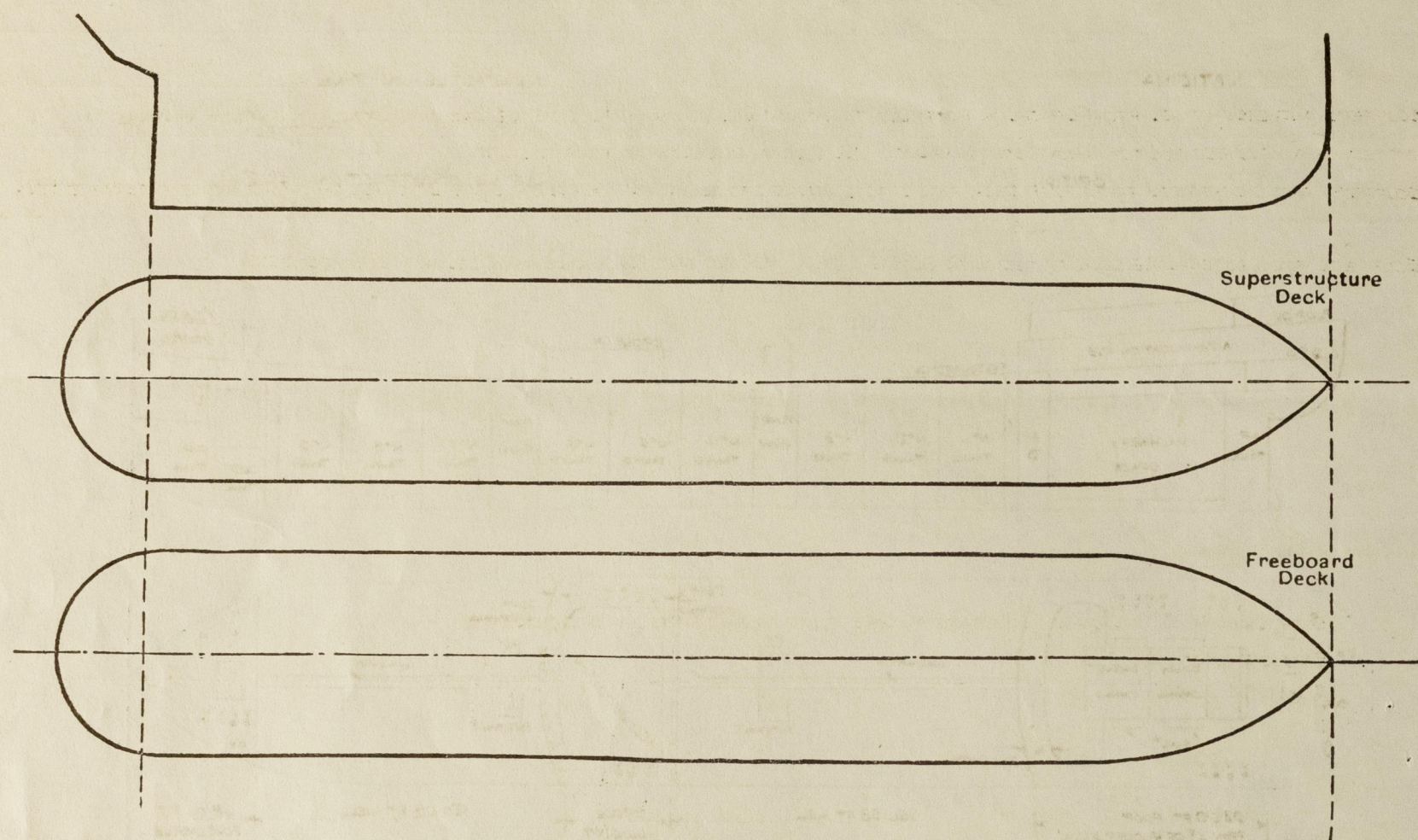
	Coaming	Plating	Stiffeners	Spacing	End Attachments of Stiffeners	Size of Openings	Height of Sills	Height of Casings
Poop Bulkhead ...	44 ✓		10" x 3 1/2" x .40 B.A. ✓	ABOUT 30" ✓	LUGS AT TOP BRACKETS AT BOTTOM ✓	5'-0" x 2'-10" (2) ✓	18" ✓	7'-6" ✓
Raised Quarter Deck Bulkhead ...	NONE							
Bridge, After Bulkhead ...		32 ✓	5" x 3" x .30 ANGLE ✓	ABOUT 30" ✓	PIVETS THROUGH BOUNDARY BARS. ✓	5'-0" x 3'-0 3/4" (2) A. ✓ 5'-0" x 2'-0" (1) B. ✓	18" ✓ 20" ✓	7'-6" ✓ 7'-6" ✓
Bridge, Forward Bulkhead ...		44 ✓	3" x 3 1/2" x .42 B.A. ✓	33" ✓	BRACKETS TOP AND BOTTOM ✓	5'-0" x 2'-6" (1) ✓	19" ✓	7'-6" ✓
Forecastle Bulkhead ...		32 ✓	4" x 3" x .34 ANGLE ✓	30" ✓	PIVETS THROUGH BOUNDARY BARS. ✓	5'-1" x 4'-1" (1) B. ✓ 4'-1" x 2'-0" (1) C. ✓ 5'-0" x 2'-6" (1) A. ✓	23 1/2" ✓ 24" ✓ 18" ✓	7'-6" ✓ 7'-6" ✓ 7'-6" ✓
Trunk, Aft ...	NONE							
Trunk, Forward ...	NONE							
Exposed Machinery Casings on Freeboard or Raised Quarter Decks ...	NONE							
Exposed Machinery Casings on Superstructure Decks ...	34	30 ✓	3" x 3" x .30 ANGLE ✓	30 3/4" ✓	BRACKETS AT TOP CONT. BELOW SUPER DECK. ✓	None		8'-4" ✓
Machinery Casings within Superstructures not fitted with Class I Closing Appliances ...	NONE							
PUMP ROOM ENTRANCES ...		40 FRONT & SIDES. 30 AFT END.	6" x 3" x .36 B.A. ✓ 4" x 3" x .32 ANGLE ✓	ABOUT 30" x 33" ✓ ABOUT 30" ✓	BRACKETS AT TOP LUGS AT BOTTOM. BRACKETS AT TOP. ✓	4'-6" x 2'-3" IN EACH ENTRANCE ✓	24" ✓	7'-6" ✓

Particulars of Closing Appliances (state if capable of being manipulated from both sides).

Poop Bulkhead ...	2 HINGED STEEL W.T. DOORS CAPABLE OF BEING MANIPULATED FROM BOTH SIDES. ✓
Raised Quarter Deck Bulkhead ...	NONE. ✓
Bridge, After Bulkhead ...	B. 1 HINGED STEEL W.T. DOOR OPERATED FROM BOTH SIDES. ✓ A. 2 PORTABLE STEEL PLATES SECURED BY HOOK BOLTS SPACED ABOUT 14" TO 18" APART. ✓
Bridge, Forward Bulkhead ...	1 HINGED STEEL W.T. DOOR OPERATED FROM BOTH SIDES. ✓ B. 1 PORTABLE STEEL PLATE SECURED BY HOOK BOLTS SPACED ABOUT 14" APART. ✓ A.C. 2 HINGED STEEL W.T. DOORS OPERATED FROM BOTH SIDES. ✓
Forecastle Bulkhead ...	
Exposed Machinery Casings on Freeboard or Raised Quarter Decks ...	NONE ✓
Exposed Machinery Casings on Superstructure Decks ...	NO OPENINGS. ✓
Machinery Casings within Superstructures not fitted with Class I Closing Appliances ...	NONE. ✓
PUMP ROOM ENTRANCES ...	1 HINGED W.T. DOOR IN EACH, OPERATED FROM BOTH SIDES. ✓

NATICINA

Particulars of Gangway Cargo and Coaling Ports:—



ENGINE ROOM SKYLIGHT OF STEEL AND STRONGLY CONSTRUCTED.
FUNNEL AND FIDLEY, VENTS OF EFFICIENT CONSTRUCTION.
FIDLEY GRATINGS PROTECTED BY HINGED STEEL COVERS SECURED BY BUTTERFLY SCREWS
ESCAPE HATCH (2) 18" x 18" WITH HINGED STEEL COVERS SECURED BY DOUBLE HANDED CLIPS.

NONE.

Particulars of Ventilators in exposed positions on freeboard and superstructure decks :—

11 @ 5" DIA WITH GOOSENECK HEAD
28" ABOVE DECK TO OPENING ✓
1 @ 6" DIA. COAMING 30" x 30" } ✓
1 @ 10" DIA - 30" x 32" } COWL HEADS
2 @ 12" DIA - 30" x 34" } ✓
1 @ 14" DIA WITH GOOSENECK HEAD
30" ABOVE DECK TO OPENING. ✓

7 @ 6" DIA. COAMINGS 30" x 30 COWL VENTS. ✓
ON UPPER DECK.
4 @ 24" DIA. STRONGLY CONSTRUCTED VENTS
TO PUMP ROOMS, COAMINGS 18" x 2" ABOVE DECK
EFFICIENTLY STAYED TO PUMP ROOM ENTFRANC
HOUSE. COWL VENTS. ✓

2 @ 8" DIA COAMINGS 36" x 30 } ✓
1 @ 12" DIA " 36" x 34 } COWL VENTS. ✓
6 @ 10" DIA " 36" x 32 } ✓

WOOD PLUGS AND CANVAS COVERS.

1 @ 2" DIA, 5 @ 2 1/2" DIA, 2 @ 3" DIA
WITH GOOSENECK HEADS ABOUT 24"
ABOVE DECK TO OPENINGS.
2 @ 4" DIA WITH MUSHROOM HEADS ABOUT
24" ABOVE DECK TO OPENINGS.

2 @ 4" DIA. ABOUT 3'-3" ABOVE DECK TO OPENINGS
EFFICIENTLY STAYED. ✓
2 @ 3" DIA. ABOUT 7'-0" ABOVE DECK TO OPENING
& 2 @ 3" DIA ABOUT 7'-6" " " " ✓ "
EFFICIENTLY STAYED.

1 @ 4" DIA WITH GOOSENECK HEAD
18" ABOVE DECK TO OPENING ✓
2 @ 4" DIA WITH MUSHROOM HEADS
23" ABOVE DECK TO OPENING. ✓

SCUPPERS AND DISCHARGES FROM SPACES IN ROOF LED TO STORM VALVES ON SHIP'S SIDE, SECOND AUTOMATIC NON-RETURN VALVES
FITTED IN ACCESSIBLE POSITION ABOVE STORM VALVE. ALL DISCHARGE BELOW FREEBOARD DECK.

SCUPPERS AND DISCHARGES FROM ROOF DECK AND SPACES ABOVE LED TO STORM VALVES ON SHIP'S SIDE, ALL DISCHARGE ABOVE FREEBOARD DECK.
" " " " BRIDGE DECK " " " " " " " " " " " " " " " "

SCUPPERS FROM FORECASTLE DECK FITTED WITH SCREW CAP ON INBOARD END, EACH DISCHARGE BELOW FREEBOARD DECK.

POOP SIDES:- 10" & 12 DIA. OF SUBSTANTIAL CONSTRUCTION AND FITTED WITH DEADLIGHTS
BRIDGE ENDS:- 8" DIA " " " " " " "
FORECASTLE SIDES:- 8" DIA " " " " " " "

Vertical distance of Sill of lowest Side Scuttle above top of keel..... NO SIDE SCUTTLES FITTED BELOW FREEBOARD DECK.

ON POOP, BRIDGE & FORECASTLE DECKS:- 3" G" HIGH, 3 RAILS, STANCHIONS SPACED ABOUT 4'-3" APART. ✓
ON FREEBOARD DECK :- OPEN RAILS
(SEE SKETCH BELOW) BULWARKS 3" G" HIGH, 20" THICK, 7" B.A. RAIL BAR, 6" B.P. STAYS SPACED ABOUT 6'-0" APART
SPECIALLY STAYED ADJACENT TO ERECTION BULKHEADS. ✓

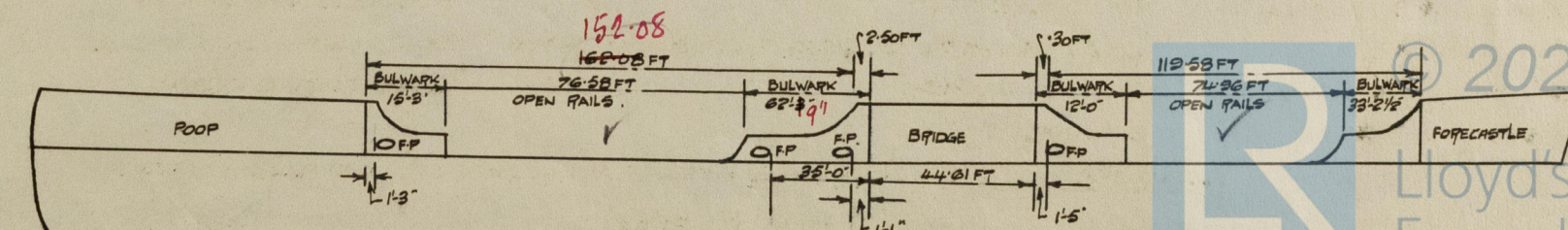
Particulars of Gangways, ~~Lifeboats~~, etc. — HEIGHT 7'-6", WIDTH AT TOP 3'-3" & AT BOTTOM 4'-5", SUPPORTS 4" x 4" x 40 ANGLES SPACED ABOUT 7'-6" APART & EACH WITH 4" x 4" x 40 ANGLE DIAGONAL TIES & BRACKETS TOP & BOTTOM; SIDE DIAGONALS 3 1/2" x 3 1/2" x 40 ANGLE FITTED IN ALTERNATE BAYS & BRACKETS TOP & BOTTOM; SIDES OF PLATFORM OF 5" x 3" x 40 BA PLATFORM OF WOOD 3" THICK, GUARD STANCHIONS 3'-6" HIGH & SPACED ABOUT 5'-0" APART, 2 RAILS IN HEIGHT.

Particulars of Freeing Arrangements.						
	Length of Bulwark	Height of Bulwark	Size of Freeing Ports	Number each side	Area each side	Rule area each side
After Well	28'-0" 152'-08"	3'-6"	○ 3'-0" x 1'-3"	3	10.24 SQ. FT. ✓ & OPEN FAILS.	TANKER.
Forward Well	46'-18" 119'-58"	3'-6"	○ 3'-0" x 1'-3"	1	3.41 SQ. FT. ✓ & OPEN FAILS.	TANKER.

State position of each freeing port	After Well :—	AS PEF SKETCH	} IS ABOVE DECK
(F. and A. position and height above deck edge)		Forward Well :—		

State whether the freeing ports are fitted with shutters, bars, or rails, and give particulars of such:— **BARs, 3 VERTICAL IN EACH.**

Additional area where sheer is less than standard.



PARTICULARS OF PROTECTION TO OPENINGS, ETC.

HATCHWAYS ON FREEBOARD AND SUPERSTRUCTURE DECKS.											
Description of Hatchway	CARGO TANKS	COFFERDAMS F.A.A.	OIL FUEL BUNKERS	ON POOP DK TO STORES	ON POOP DK TO ROPE STORE	FOR CARGO SPACE	ON FORECASTLE DECK	ON FREEBOARD DECK
Dimensions of Hatchway	4'-6" x 3'-6" (27 OFF)	1'-6" x 2'-0" (6 OFF)	1'-6" x 2'-0" (2 OFF)	3'-3" x 2'-6" (1 OFF)	1'-3" DIA (1 OFF)	6'-0" x 10'-0" (1 OFF)	2'-6" x 2'-6" (1 OFF)	2'-6" x 2'-6" (1 OFF)
COAMINGS	{	Height above Deck	...	30"	7"	7"	16 1/2"	6" x 3" x 38 BULB ANGLE	34"	3" x 3 1/2" x 42 BULB ANGLE	3" x 3 1/2" x 42 BULB ANGLE
		Thickness40	.40	.40	.40	.44			
		Sides	...								
		Ends	...								
		Stiffeners	...	✓	COAMING OF INVERTED TYPE	COAMING OF INVERTED TYPE	✓	✓	6" x 3" B.A.	✓	✓
		Brackets, Stays	...	✓	WELDED TO OK.	WELDED TO OK.	✓	✓		✓	✓
HATCH BEAMS	{	Number	...	WITH .50 THK HINGED STEEL COVER MADE W.T. BY GREASY HEMP PACKING AND 14 BUTTERFLY SCREWS.	WITH .50 THK BOLTED STEEL COVER. BOLTS 3/4" DIA SPACED 3 1/4" APART.	WITH .50 THK BOLTED STEEL COVER. BOLTS 3/4" DIA SPACED 3 1/4" APART.	WITH .40 THK HINGED STEEL COVER MADE W.T. BY GREASY HEMP PACKING AND 8 BUTTERFLY SCREWS.	WITH .40 THK HINGED STEEL COVER MADE W.T. BY GREASY HEMP PACKING AND 4 BUTTERFLY SCREWS.	WITH .40 THK STEEL COVER STIFFENED BY 4" x 3" x 40 ANGLE SPACED ABOUT 30" APART. COVER HINGED & MADE W.T.	EACH WITH .40 THK HINGED STEEL COVER MADE W.T. BY GREASY HEMP PACKING AND 8 BUTTERFLY SCREWS.	
		Spacing	...								
		Unsupported Lengths	...								
		Scantling* and Sketch	...								
		Bearing Surface	...								
FORE AND AFTERS	{	Number	...						BY GREASY HEMP PACKING & 22 BUTTERFLY SCREWS.		
		Spacing	...								
		Unsupported Lengths	...								
		Scantling* and Sketch	...								
		Bearing Surface	...					W.T. BOLTED COVER ON OVAL ACCESS MANHOLE ON MAIN COVER. HATCHWAY TRUNKED TO FREEBOARD DK.			
HATCH COVERS	{	Material	...								
		Thickness	...								
		How fitted	...								
		Bearing Surface	...								
Spacing of Cleats								
Number of Tarpaulins								

*Are wood fore and afters steel shod at all bearing surfaces?
 Are battens and wedges efficient and in good condition?
 Are tarpaulins in good condition and in accordance with rule requirements?
 Are lashings provided in accordance with rule requirements?

Particulars of any special features:—

Endorsement at first survey and at surveys for renewal of Certificate:—

The fittings and appliances are in accordance with the particulars shown on this form (or as now modified) and are in good condition.



© 2020

Lloyd's Register Foundation