

PROFILE FOR PROPOSAL NO. 8627.

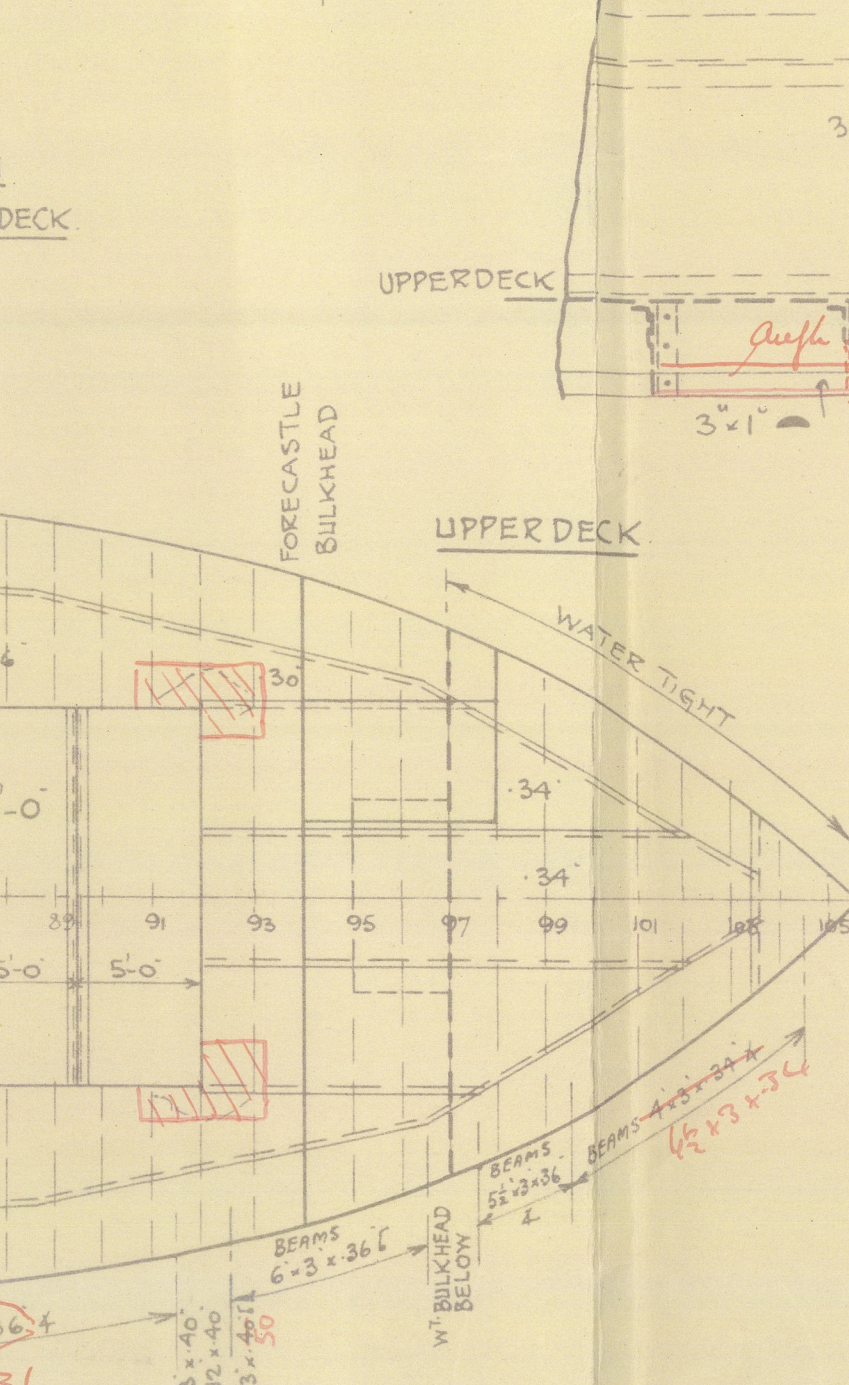
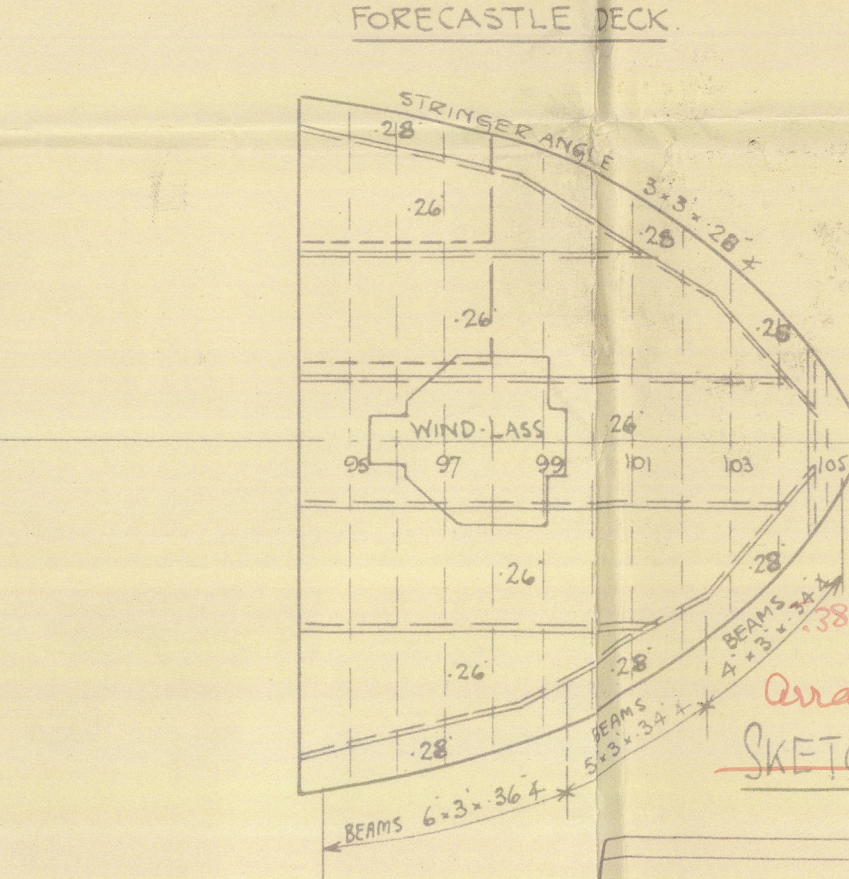
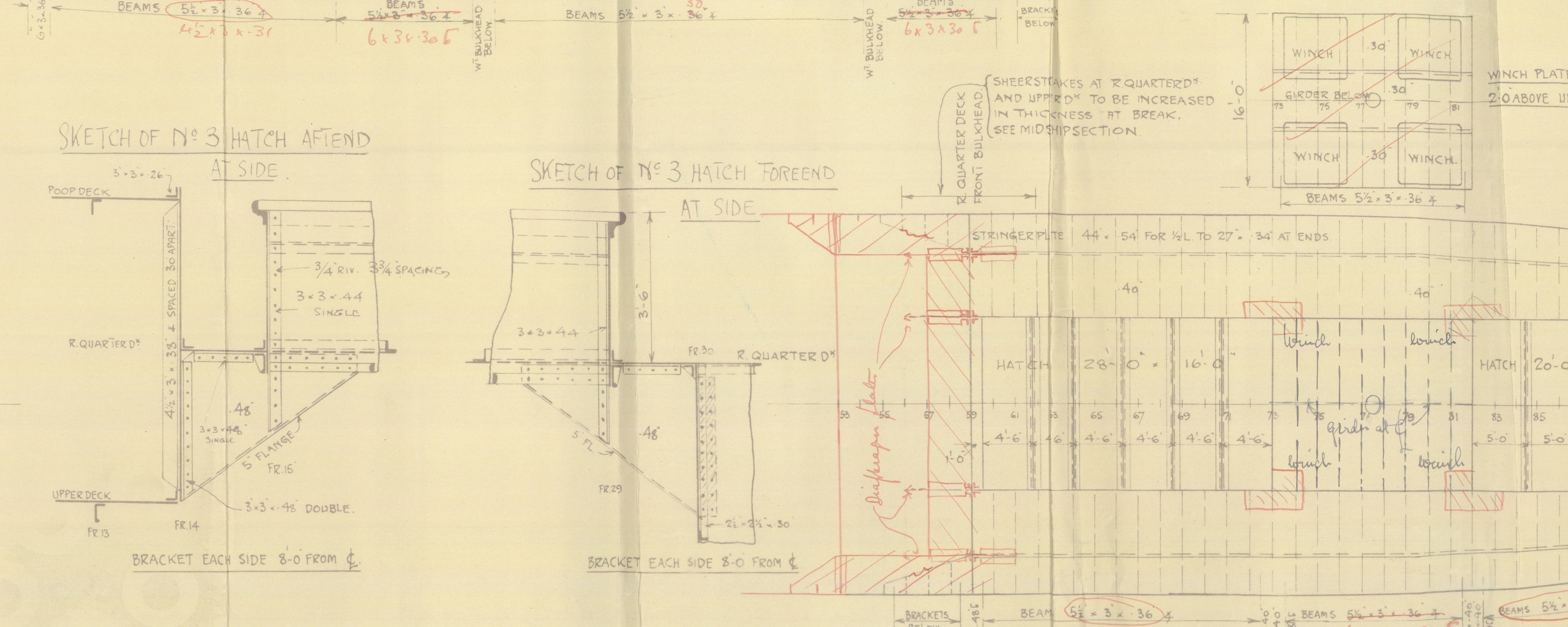
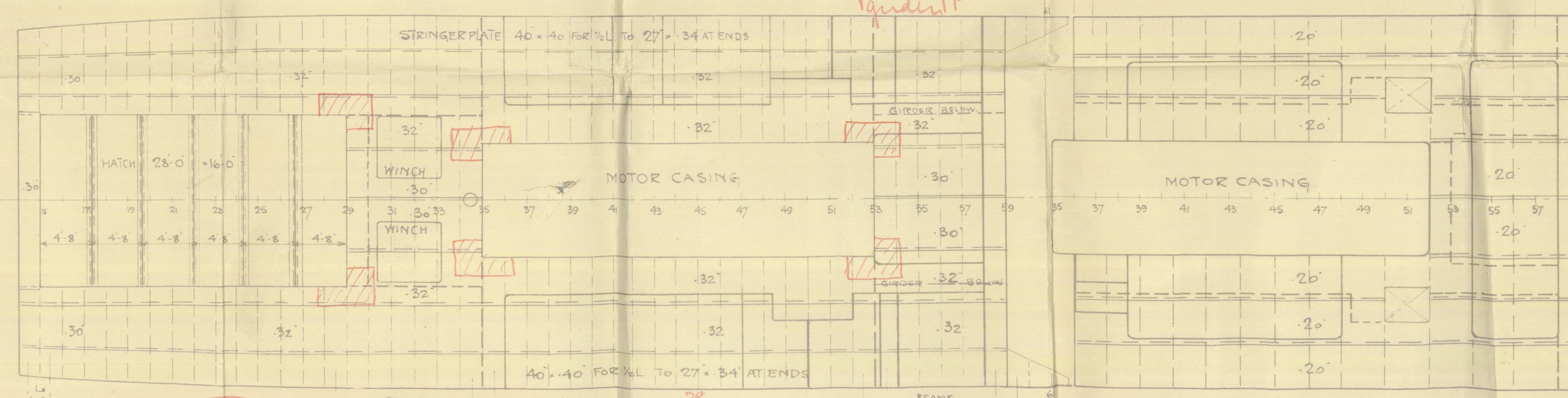
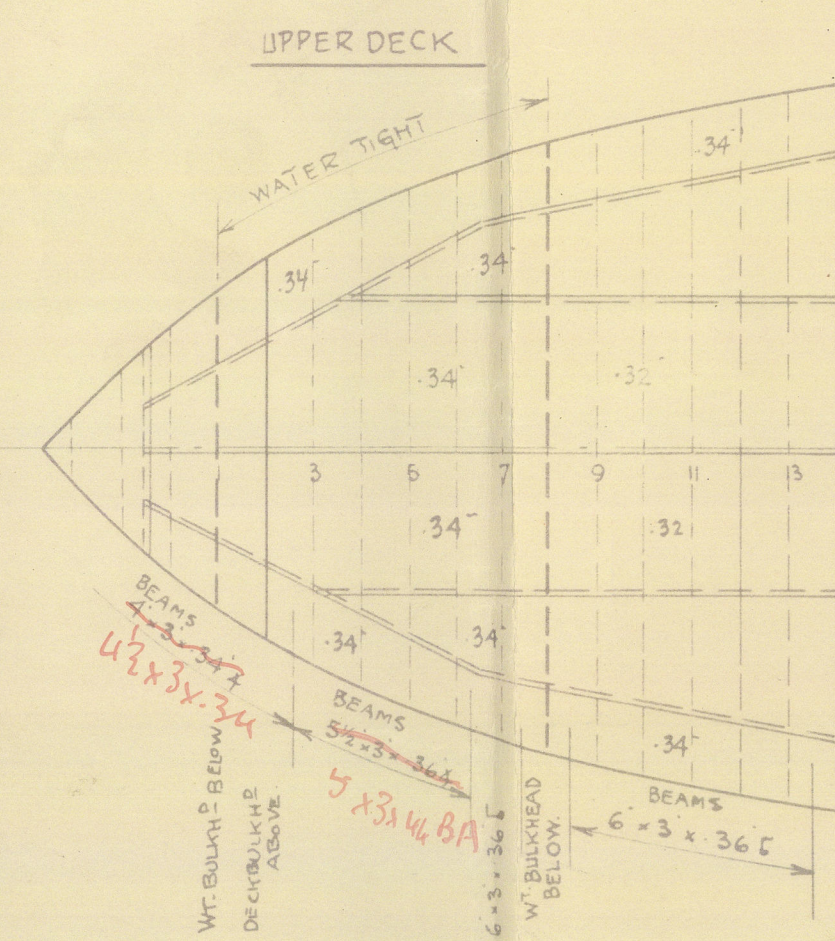
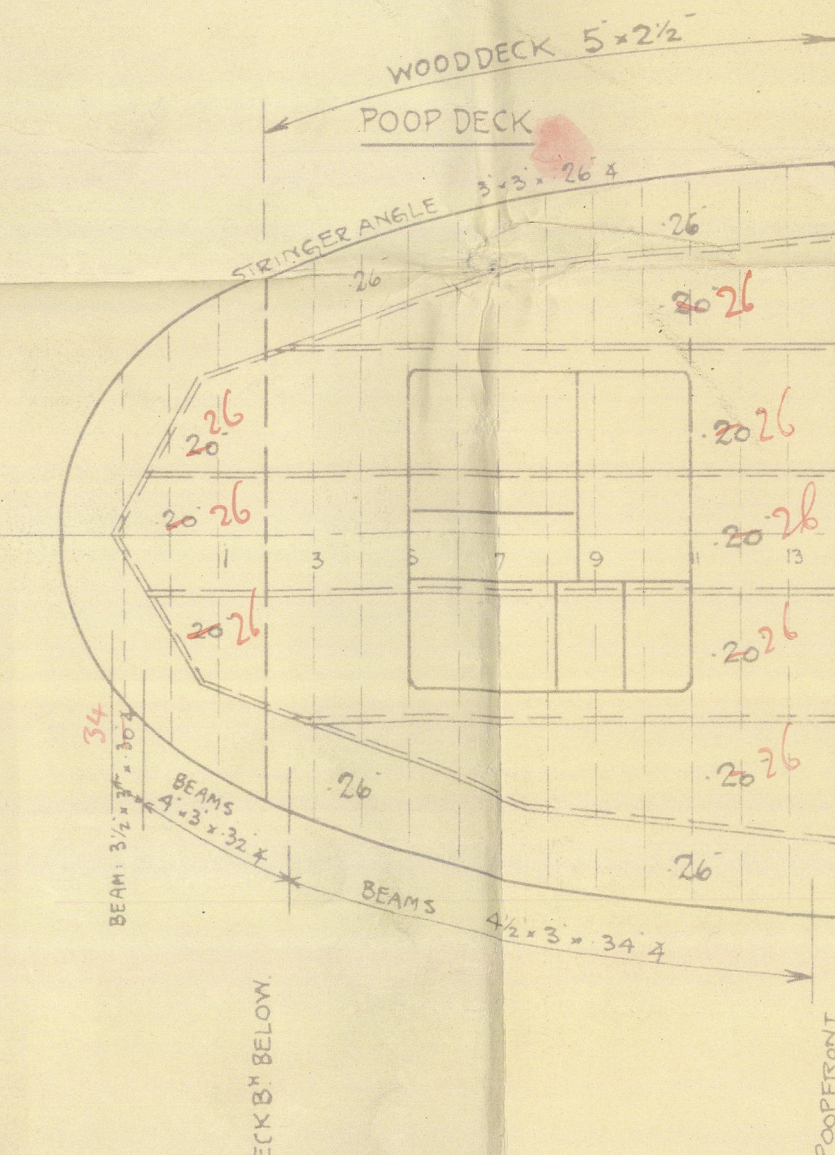
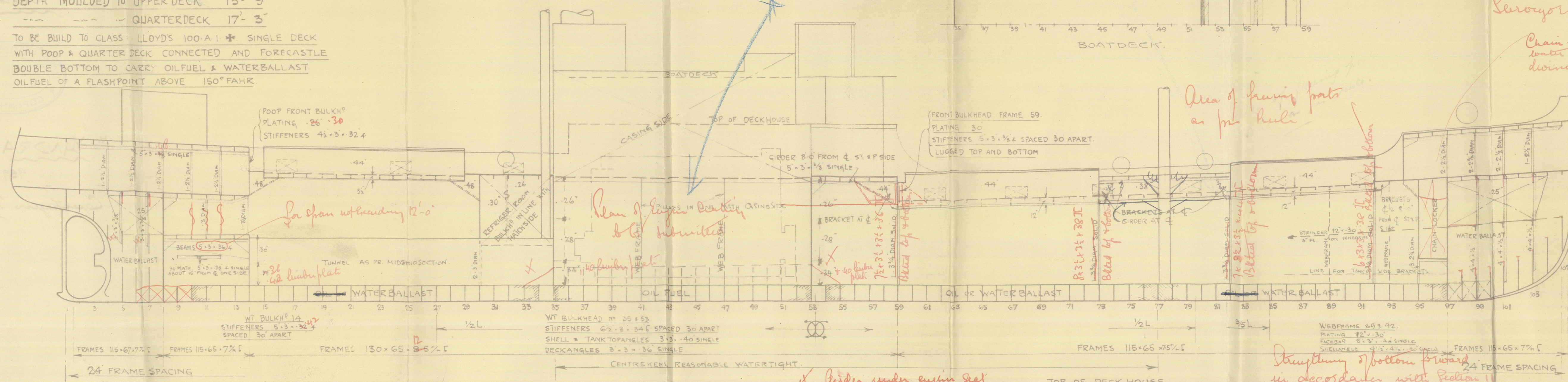
SCALE: 1/8" = 1'-0"

LENGTH BETW. PP 210'-0"
BREADTH 35'-0"
DEPTH MOULDED TO UPPER DECK 13'-9"
QUARTERDECK 17'-3"

TO BE BUILT TO CLASS LLOYD'S 100-A1 * SINGLE DECK
WITH POOP & QUARTER DECK CONNECTED AND FORECASTLE
DOUBLE BOTTOM TO CARRY OILFUEL & WATERBALLAST.
OILFUEL OF A FLASHPOINT ABOVE 150° FAHR.

POOP DECK

UPPER DECK



FORECASTLE DECK

UPPER DECK

STRINGER 27.34.40

PATINGS 4.3.24.2

WATER BALLAST

WATER BALLAST

WATER BALLAST

WATER BALLAST

WATER BALLAST

WATER BALLAST

WATER BALLAST

WATER BALLAST

WATER BALLAST

WATER BALLAST

WATER BALLAST

WATER BALLAST

WATER BALLAST

WATER BALLAST

WATER BALLAST

WATER BALLAST

WATER BALLAST

WATER BALLAST

WATER BALLAST

WATER BALLAST

WATER BALLAST

WATER BALLAST

WT BULKHEAD FRAME NO 97

SCALE 1/4" = 1'-0"

3.3 x 36 SINGLE

UPPER DECK

24

24

24

24

24

24

24

24

24

24

24

24

24

24

24

24

24

24

24

24

24

24

SKETCH OF HATCH N°2

FOREEND AT C

WINCH PLATFORM 2'0" ABOVE UPPER DECK

5.3 x 3/8 AT C

BRACKET

FRAME 73 AT C

3/4" DIAM. SOLID AT C

WT BULKHEAD FRAME NO 8

SCALE 1/4" = 1'-0"

3.3 x 36 SINGLE

UPPER DECK

24

24

24

24

24

24

24

24

24

24

Arrangement of Hatch N°2

SKETCH OF N°2 HATCH FOREEND

AT SIDE

WINCH PLATFORM 2'0" ABOVE UPPER DECK

3.3 x 3/8 AT C

BRACKET

FRAME 73 AT C

3/4" DIAM. SOLID AT C

WT BULKHEAD FRAME NO 8

SCALE 1/4" = 1'-0"

3.3 x 36 SINGLE

UPPER DECK

24

24

SKETCH OF N°2 HATCH AFTEND

AT SIDE

WINCH PLATFORM 2'0" ABOVE UPPER DECK

3.3 x 3/8 AT C

BRACKET

FRAME 73 AT C

3/4" DIAM. SOLID AT C

WT BULKHEAD FRAME NO 8

SCALE 1/4" = 1'-0"

3.3 x 36 SINGLE

9.3 x 48 IN WAY OF HATCH

AND RUNNING IS BEYOND

DISCLOSED FOR ANY THIRD PERSON.

COPENHAGEN. DATE: 4/9.27

THIS DRAWING IS STRICTLY CONFIDENTIAL

AND MUST ON NO ACCOUNT BE COPIED OR

DISCLOSED FOR ANY THIRD PERSON.

COPENHAGEN. DATE: 4/9.27

AKTIESELSKABET

BURMEISTER & WAINSKIN-OG SKIBSBYGGERI.

21. marts

005679-005686-0066

W.J.
14.9.27

PROPOSAL 8627
12931

2.9.27

2020

PROFILE.

Foundation

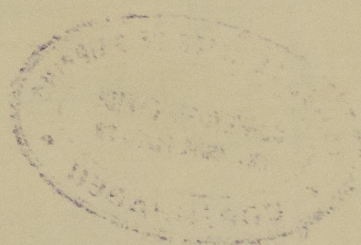
5551
Louisa. Sec.



© 2020

Lloyd's Register
Foundation

0000-08500-61000



© 2020

Lloyd's Register
Foundation

Burn. & Wain,

Copenhagen,

Neer. No. 555.

for Adelaide Steamship Co.

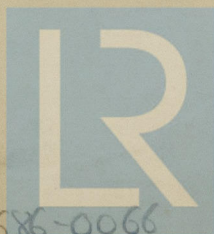
Longitudinal
Section.



"M/S. YANDRA" of Port Adelaide.

989 Tons gr.

Copenhagen Report No. 7808.



© 2020

Lloyd's Register
Foundation

003679-003686-0066